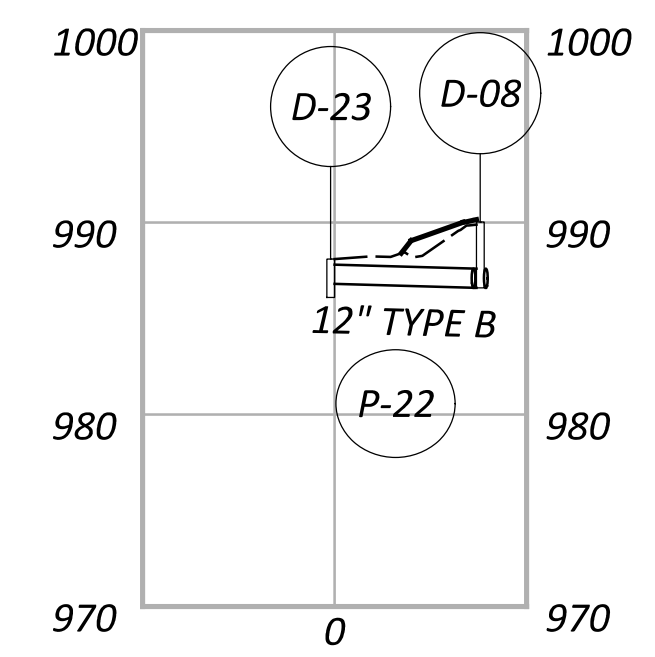
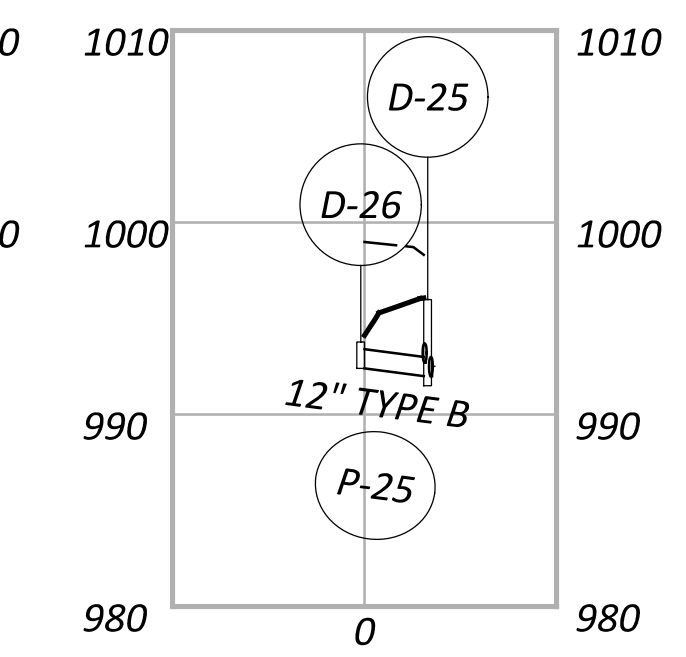
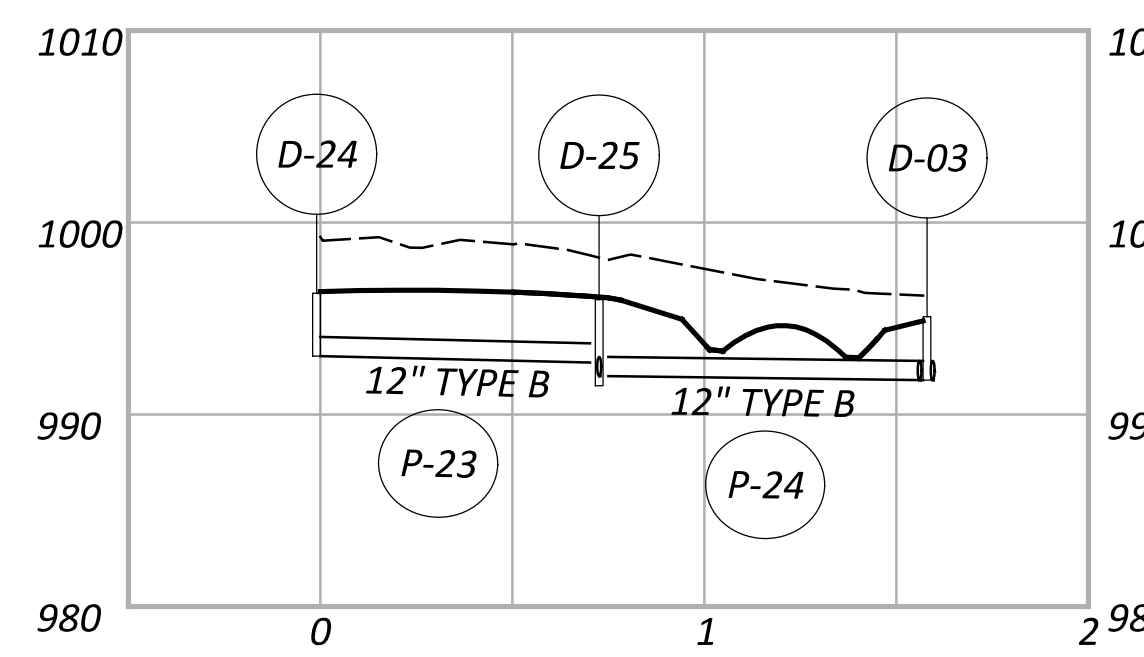
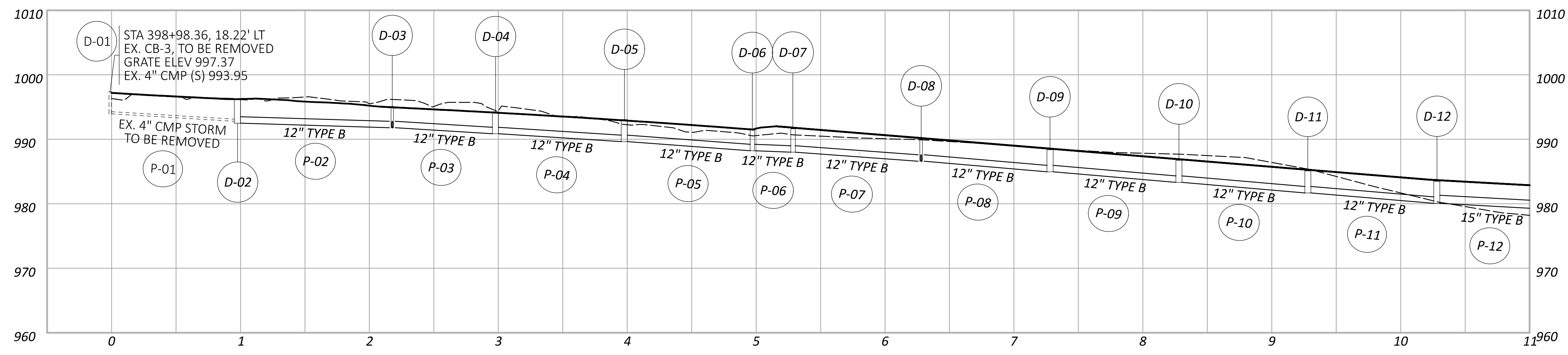


DRAINAGE CONDUIT DETAILS										
REF. NO.	CFN	LENGTH (FT)	SIZE	TYPE	SLOPE	START STRUCT. REF. NO.	START INVERT ELEV.	STOP STRUCT. REF. NO.	STOP INVERT ELEV.	EXISTING DISPOSITION
P-01		100.00	4"	EX. CMP	1.16 %	D-01	993.95	D-02	992.79	TO BE REMOVED
P-02	1111102	120.00	12"	TYPE B	0.59 %	D-02	992.50	D-03	991.79	
P-03	1111103	80.00	12"	TYPE B	1.16 %	D-03	991.79	D-04	990.86	
P-04	1111104	100.00	12"	TYPE B	1.22 %	D-04	990.86	D-05	989.64	
P-05	1111105	100.00	12"	TYPE B	1.42 %	D-05	989.64	D-06	988.22	
P-06	1111106	30.00	12"	TYPE B	0.73 %	D-06	988.22	D-07	988.00	
P-07	1111107	100.00	12"	TYPE B	1.40 %	D-07	988.00	D-08	986.60	
P-08	1111108	100.00	12"	TYPE B	1.64 %	D-08	986.60	D-09	984.96	
P-09	1111109	100.00	12"	TYPE B	1.64 %	D-09	984.96	D-10	983.32	
P-10	1111110	100.00	12"	TYPE B	1.64 %	D-10	983.32	D-11	981.68	
P-11	1111111	100.00	12"	TYPE B	1.61 %	D-11	981.68	D-12	980.07	
P-12	1111112	100.00	12"	TYPE B	1.04 %	D-12	980.07	D-13	979.03	
P-22	1111122	39.00	12"	TYPE B	0.51 %	D-23	986.80	D-08	986.60	
P-23	1111123	75.00	12"	TYPE B	0.44 %	D-24	993.04	D-25	992.71	
P-24	1111124	85.00	12"	TYPE B	0.25 %	D-25	992.00	D-03	991.79	
P-25	1111125	18.00	15"	TYPE B	2.29 %	D-26	992.40	D-25	992.00	

DRAINAGE STRUCTURE DETAILS									
REF. NO.	REFERENCE ALIGNMENT	STATION	OFFSET	SIDE	TYPE	GRATE/RIM ELEV.	INVERT ELEV.	CONNECTED PIPES	EXISTING DISPOSITION
D-01	S.R. 185	398+98.36	18.22	LT	EX. CB-3	997.37	993.95	(OUT) P-01 EX. 4" S 993.95	TO BE REMOVED
D-02	S.R. 185	399+98.36	18.23	LT	CB-3	996.30	992.50	(IN) P-01 EX. 4" N 992.79, (OUT) P-02 12" S 992.5	
D-03	S.R. 185	401+18.33	18.21	LT	CB-3	995.10	991.79	(IN) P-24 12" NE 991.79, (IN) P-02 12" N 991.79, (OUT) P-03 12" S 991.79	
D-04	S.R. 185	401+98.34	18.22	LT	CB-3	994.27	990.86	(IN) P-03 12" N 990.86, (OUT) P-04 12" S 990.86	
D-05	S.R. 185	402+98.33	18.21	LT	CB-3	993.06	989.64	(IN) P-04 12" N 989.64, (OUT) P-05 12" S 989.64	
D-06	S.R. 185	403+98.33	18.21	LT	CB-3	991.63	988.22	(IN) U-1 6" E 990.63, (IN) P-05 12" N 988.22, (OUT) P-06 12" W 988.22	
D-07	S.R. 185	403+98.33	12.63	RT	CB-3	991.63	988.00	(IN) U-2 6" W 990.63, (IN) P-06 12" E 988, (OUT) P-07 12" S 988	
D-08	S.R. 185	404+98.32	12.62	RT	CB-3	990.02	986.60	(IN) P-22 12" SW 986.6, (IN) P-07 12" N 986.6, (OUT) P-08 12" S 986.6	
D-09	S.R. 185	405+98.32	12.62	RT	CB-3	988.38	984.96	(IN) P-08 12" N 984.96, (OUT) P-09 12" S 984.96	
D-10	S.R. 185	406+98.33	12.63	RT	CB-3	986.74	983.32	(IN) P-09 12" N 983.32, (OUT) P-10 12" S 983.32	
D-11	S.R. 185	407+98.32	12.62	RT	CB-3	985.10	981.68	(IN) P-10 12" N 981.68, (OUT) P-11 12" S 981.68	
D-12	S.R. 185	408+98.32	12.62	RT	CB-3	983.48	980.07	(IN) P-11 12" N 980.07, (OUT) P-12 12" S 980.07	
D-23	S.R. 185	405+23.33	42.21	RT	CB-2-3	988.10	986.10	(OUT) P-22 12" NE 986.8	
D-24	ST. PETER RD.	18+47.32	12.36	LT	CB-3	996.32	993.04	(OUT) P-23 12" W 993.04	
D-25	ST. PETER RD.	19+22.32	12.35	LT	CB-3	995.99	991.50	(IN) P-23 12" E 992.71, (IN) P-25 12" SE 992, (OUT) P-24 12" SW 992	
D-26	ST. PETER RD.	19+17.02	28.68	LT	CB-2-2A	993.77	992.40	(OUT) P-25 15" NW 992.4	



CROSS REFERENCES	
SHEET NO.	DESCRIPTION
P.15	UNDERDRAIN DETAILS



DAR-185-0000

MODEL: CLP_S185_V3 - Plan 6 [Sheet] PAPER SIZE: 34x22 (in.) DATE: 11/26/2024 TIME: 11:06:39 AM USER: jrsek
 pw:\ohiodot-pw-bentley.com\ohiodot-pw-04\Documents\04 Admin Configuration\CADD Standards\Dev\Worksheets\0000000_JD_Misc\400-Engineering\Drawings_Roll\Plot\Sheets\SP1312-4(b).dgn

DRAINAGE DETAILS

DESIGN AGENCY

DESIGNER
 JED

REVIEWER
 ME 11-21-23

PROJECT ID
 123456

SHEET TOTAL
 P.20 154