

UTILITY NOTE

ADA-41-31.36

PID: 123193

Date: 04/30/2026

- Bidders are advised that the following utility facilities may not be cleared from the construction area at the time of award of the contract. Relocations are based on current information within anticipated construction limits of the project as set out below. All station locations listed below are approximate unless otherwise stated. Relocations are based on latest Right of Way and Construction Centerline.
- If there are any discrepancies between field markings and what the highway plan indicates, please contact ODOT's Utility Coordinator prior to any subsurface work being initiated. If requested, test hole data sheets will be provided to ODOT's Project Engineer and the State's Highway Contractor at the Pre-Construction Meeting.
- All changes to relocation work as described in the Utility Note must be approved by the ODOT Project Engineer and (District Utilities Coordinator or Design Consultant).
- ODOT shall not be held responsible for delay claims resulting from agreements made between the utility companies and the State's Highway Contractor without ODOT's prior consent to the agreement.
- The State's Highway Contractor shall notify ODOT's Project Engineer, in writing, within 24 hours of any project related contact with a utility company.
- Company work time frames DO NOT include Ohio Revised Code 4939 Ohio 811 Registered Utility Protection Service.
- Utility relocation work is based on the sequence of construction in the highway plan. Any changes made to the order of construction may impact the utility relocation work as described in this Utility Note.
- It should not be assumed a Company's work, in all locations, can be performed concurrently, unless otherwise noted. The number of working days in a Company's time frame may be determined by relocation work not being consecutive.
- Non-compliance to meeting established target dates could cause ODOT to incur project delays and/or additional costs. In this regard, 5512.02 ORC gives the Department the authority to ensure project clearance and recover costs.
- For further responsibilities of the State's Highway Contractor and Utility Companies, see the Department of Transportation Construction and Material Specifications, sections 105.07 & 107.16.
- The Companies shall comply with the following requirements, regarding restoration of areas within the project limits, where their facilities have been relocated due to proposed project work:
 - All excavations shall be backfilled with suitable material and compacted to ODOT specifications.
 - Mounding of dirt over trenches will not be permitted. Preliminary cleanup will be required while working and unsuitable material hauled away.
 - Trenches are not to remain open overnight, other than what is needed to start the next day's work. Those trenches shall be covered with a steel plate and designated with safety cones or barrels.
 - All disturbed right of way shall be restored to its original condition or better, and seeded and mulched as per Item 659, ODOT Specifications. Excavations must be restored within 7 days of original date of disturbance.
 - All trenched driveway approaches shall be backfilled with granular material and compacted to ODOT specifications. Driveway surfaces shall be replaced in kind. Consult with (District Utilities Coordinator or Design Consultant) on how to handle disturbed sidewalks.

Adams County Regional Water District (ACRWD)

Utility Type: Water

Contact Information: Jonny Hayslip, 937-544-2396, rickadamson@acrwd.com

Conflict Identified: No

Conflict Resolution Type: Protect in Place

Location Details:

Utility Note Comments:

The Company does not anticipate any conflicts with the proposed work. If a conflict does arise, the State's Highway Contractor will immediately contact the Company and ODOT Project Engineer, so the proper actions can be taken to prevent delay of construction.

AEP Ohio (Ohio Power; Columbus Southern Power)

Utility Type: Power

Contact Information: Clarke Saunders, 740-985-3054, cmsaunders@aep.com

Conflict Identified: No

Conflict Resolution Type: Protect in Place

Location Details:

Utility Note Comments:

The Company does not anticipate any conflicts with the proposed work. If a conflict does arise, the State's Highway Contractor will immediately contact the Company and ODOT Project Engineer, so the proper actions can be taken to prevent delay of construction.

If the Contractor has concerns with working in the proximity of the electric lines, they shall reach out to AEP Solution Center at 1-800-277-2177 at least 3 weeks prior to have the lines covered.

Frontier (GTE; Verizon North)

Utility Type: Communication

Contact Information: David Longworth, 937-283-5735, david.m.longworth@ftr.com

Conflict Identified: No

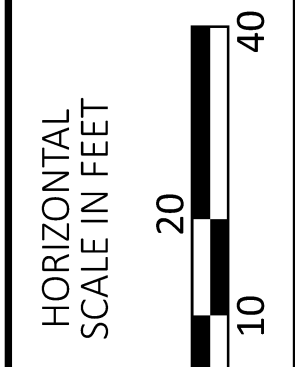
Conflict Resolution Type: Protect in Place

Location Details:

Utility Note Comments:

The Company does not anticipate any conflicts with the proposed work. If a conflict does arise, the State's Highway Contractor will immediately contact the Company and ODOT Project Engineer, so the proper actions can be taken to prevent delay of construction.

Electric Exhibit



PLAN AND PROFILE
STA. 1653+60.00 TO STA. 1658+50.00

DESIGN AGENCY



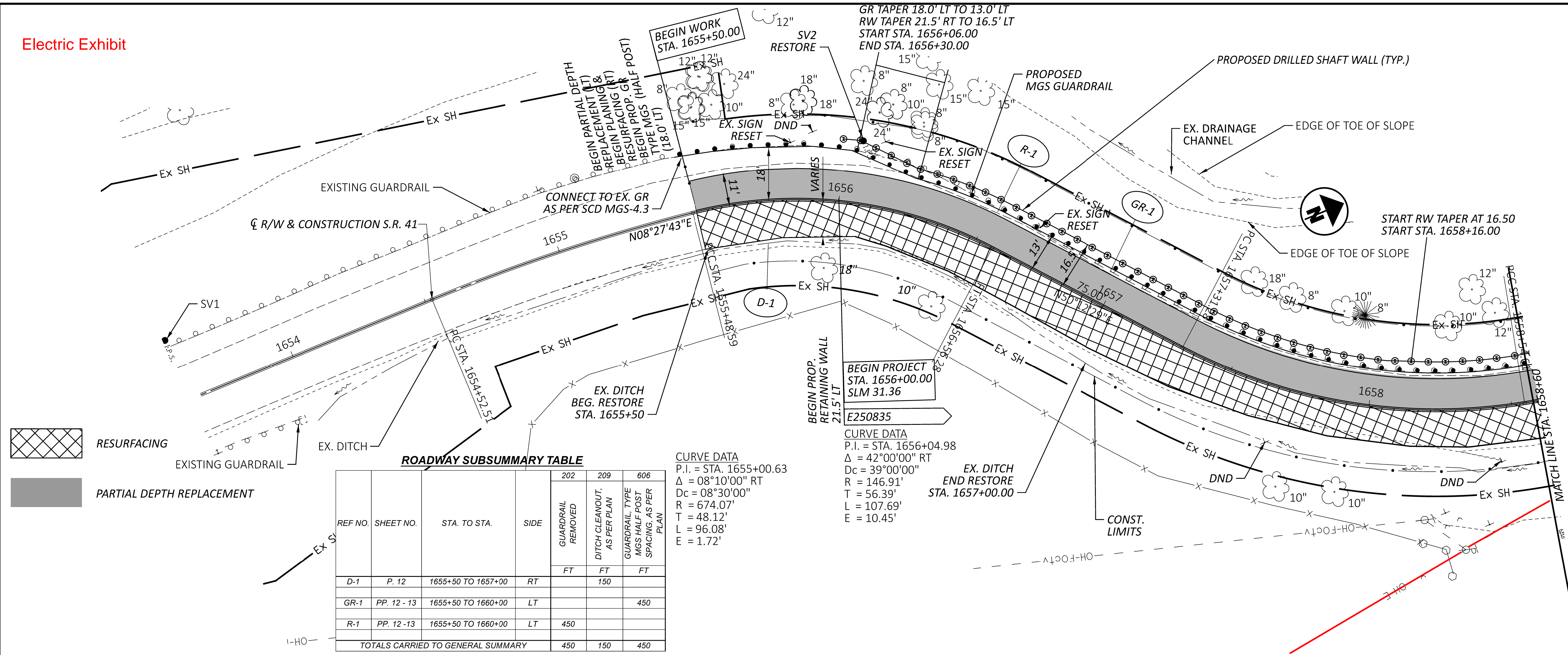
DESIGNER
MWH

REVIEWER
MCM 12-08-25

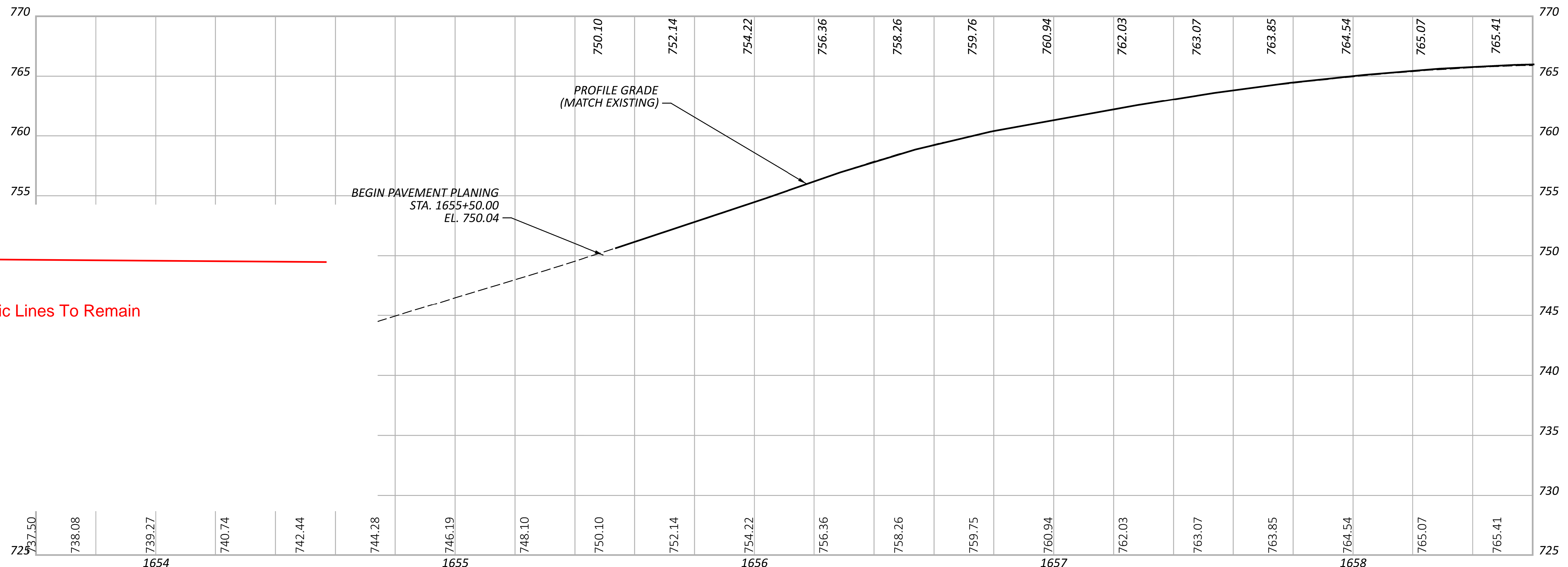
PROJECT ID
123193

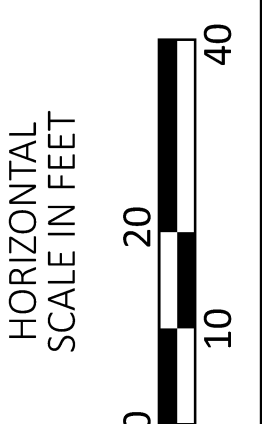
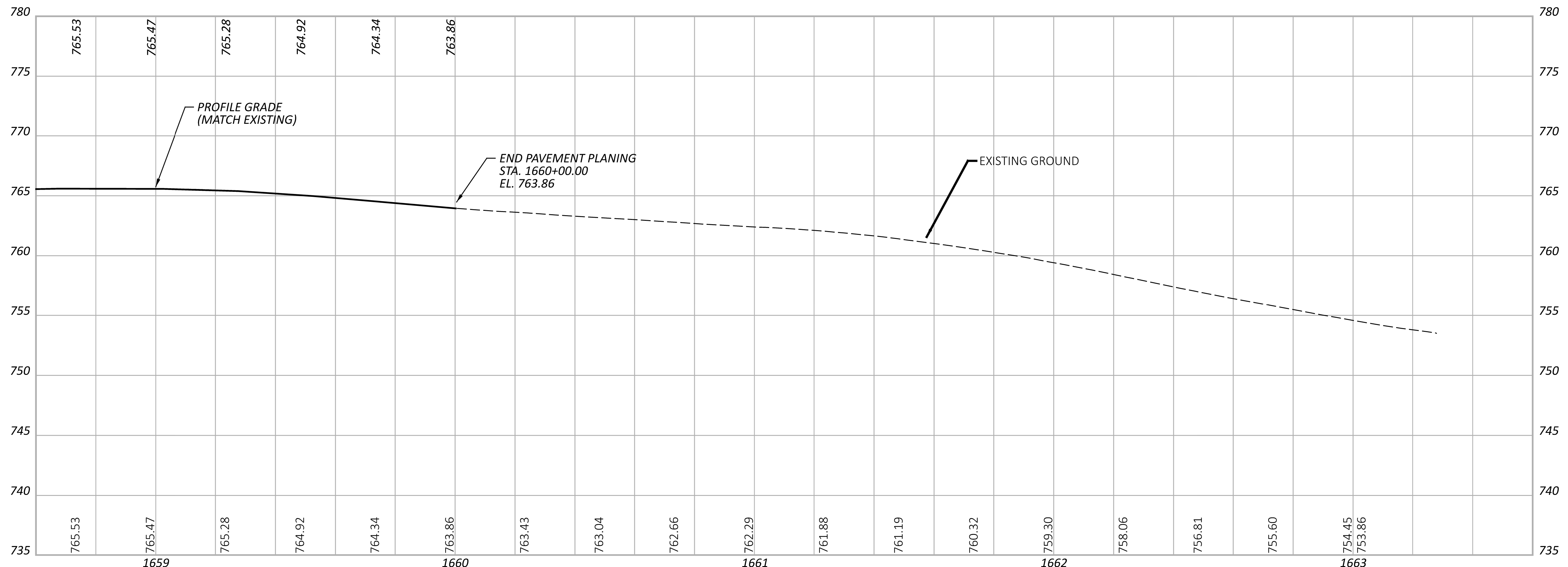
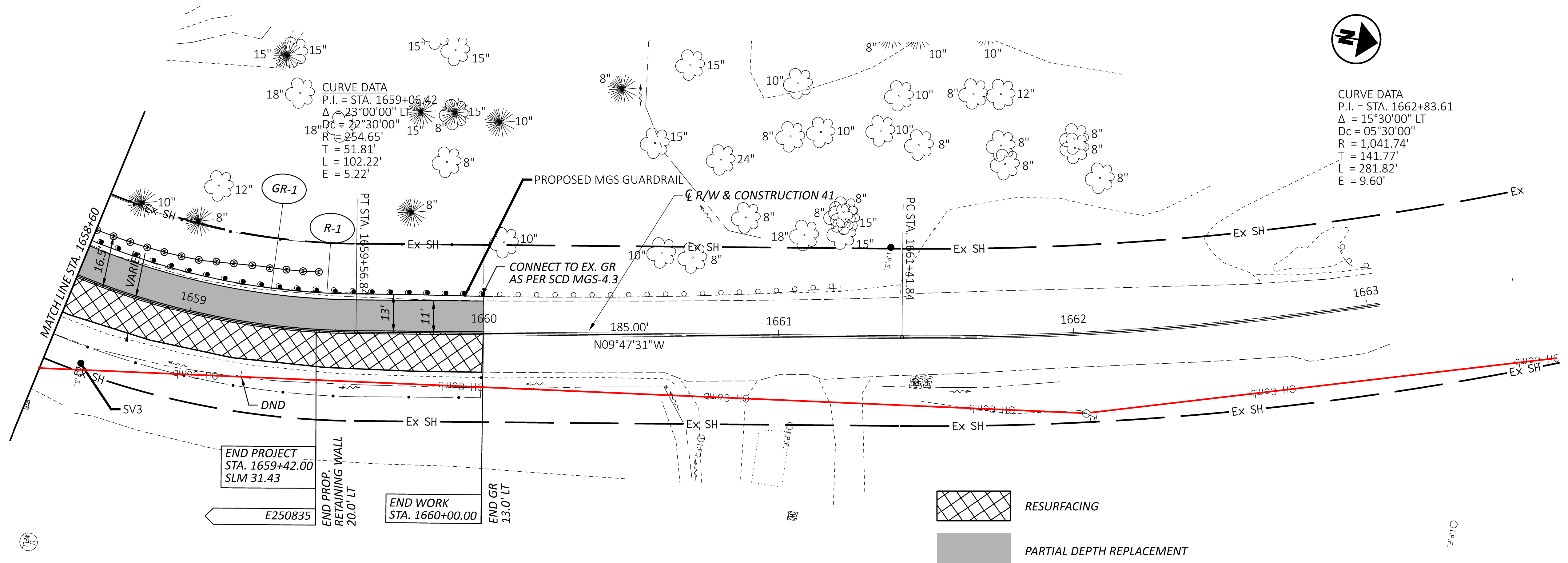
SHEET TOTAL
P. 12 43

ADA-41-31.36
 MODEL: cks41 - Plan SR 41 (Sheet) PAPER SIZE: 34x22 (in.) DATE: 12/16/2025 TIME: 1:32:41 PM PLTDRV: OHDOT_PDF.plt CFG: PEN.tbl USER: Matthew.Hurst@dot.ohio.gov WORKSPACE: OHDOTCEV02 WORKSET: 123193 PRODUCT: OpenRoadsDesigner 24.00.00.205
 pw:\ohdot\pw.bentley.com\ohdot\pw-02\Documents\01.Active Projects\District 09\Adams\123193\400-Engineering\Roadway\Sheets\123193_GPO01.dgn



Aerial Electric Lines To Remain





PLAN AND PROFILE
 STA. 1658+50.00 TO 1663+7.48

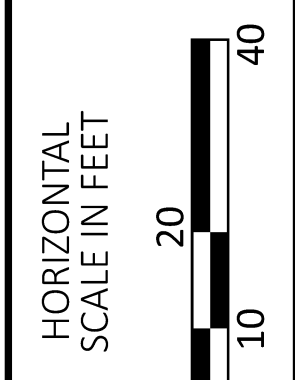
DESIGN AGENCY

DESIGNER
 MWH

REVIEWER
 MCM 12-8-25

PROJECT ID
 123193

SHEET TOTAL
 P. 13 43



PLAN AND PROFILE
STA. 1653+60.00 TO STA. 1658+50.00

DESIGN AGENCY



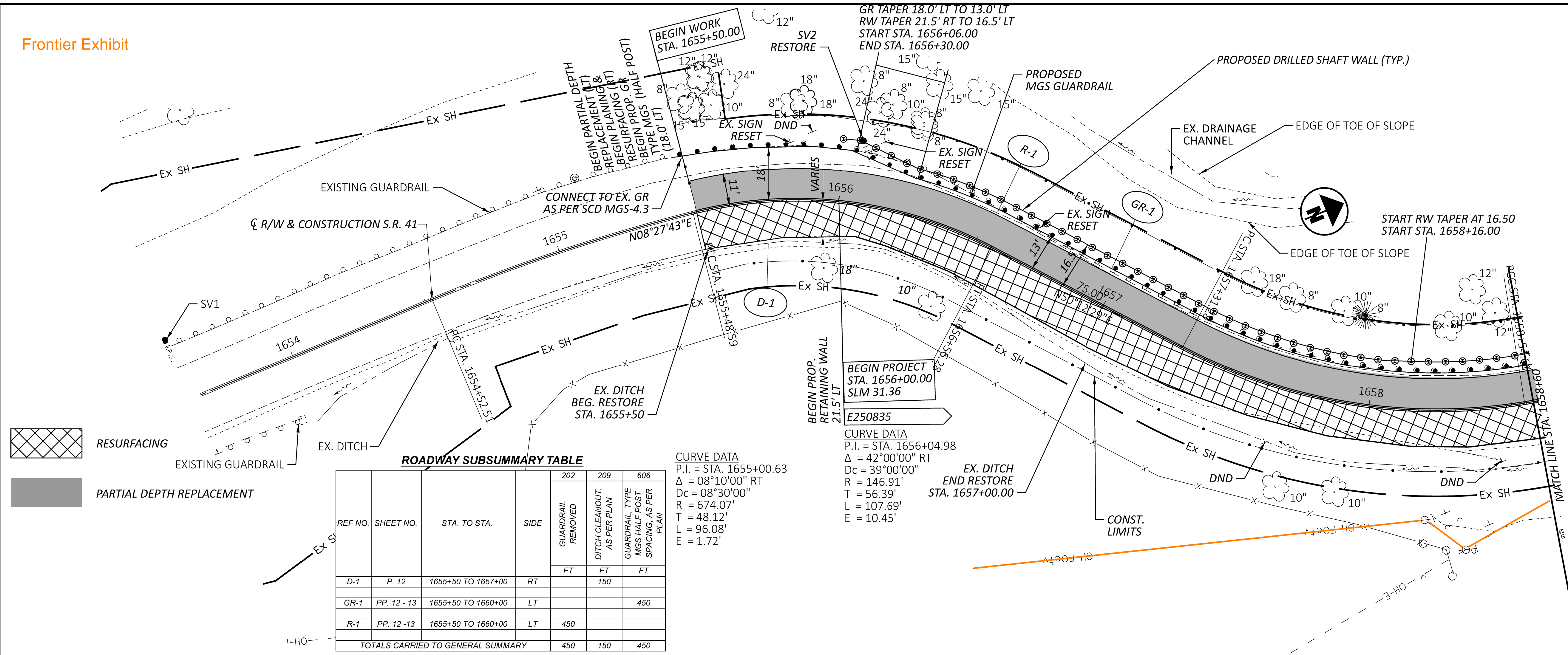
DESIGNER
MWH

REVIEWER
MCM 12-08-25

PROJECT ID
123193

SHEET TOTAL
P. 12 43

ADA-41-31.36
MODEL: cks41 - Plan SR 41 (Sheet) PAPER SIZE: 34x22 (in.) DATE: 12/16/2025 TIME: 1:32:41 PM PLTDRV: OHDOT.PDF.pltcfg PENTBL: OHDOT Pen.tbl USER: Matthew.Hurst@dot.ohio.gov WORKSPACE: OHDOTCEV02 WORKSET: 123193 PRODUCT: OpenRoadsDesigner 24.00.00.205
pw:\ohdot-pw.bentley.com\ohdot-pw-02\Documents\01.Active Projects\District 09\Adams\123193\400-Engineering\Roadway\Sheets\123193_GPO01.dgn

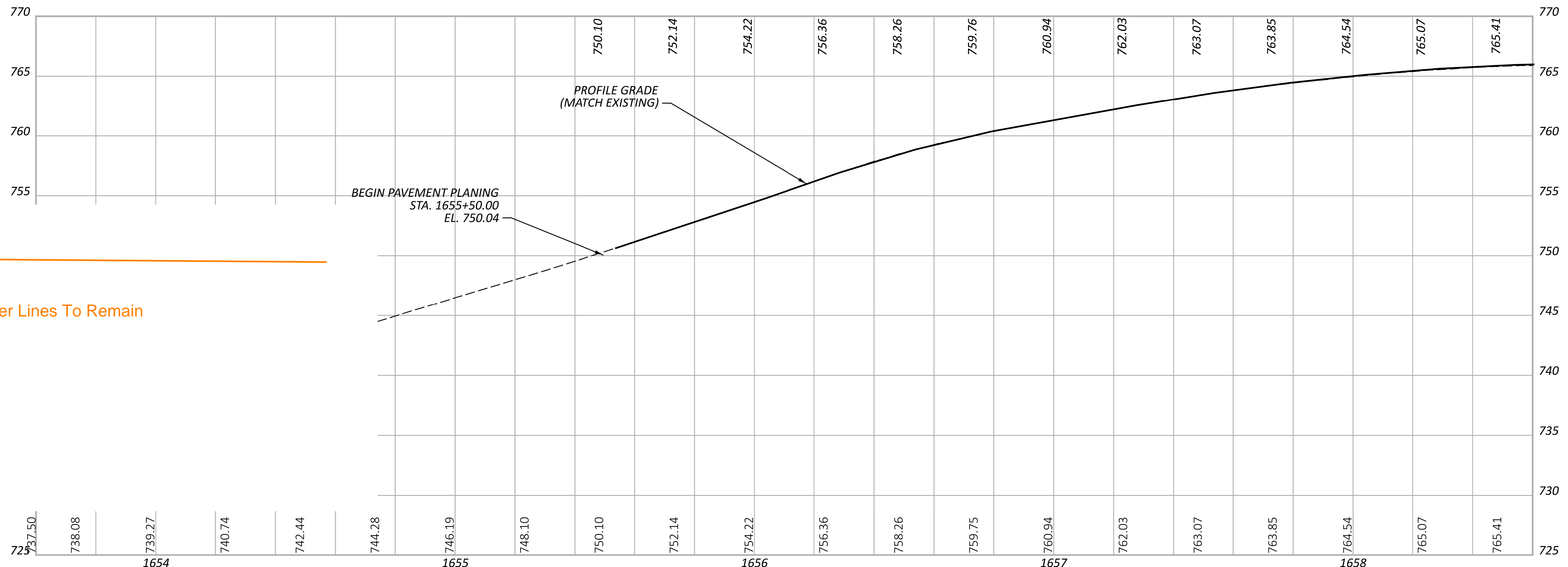


ROADWAY SUBSUMMARY TABLE

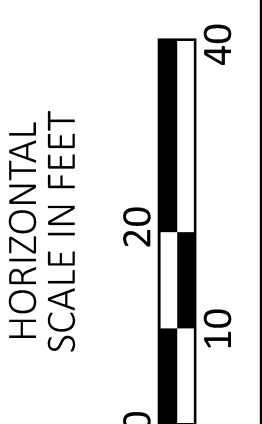
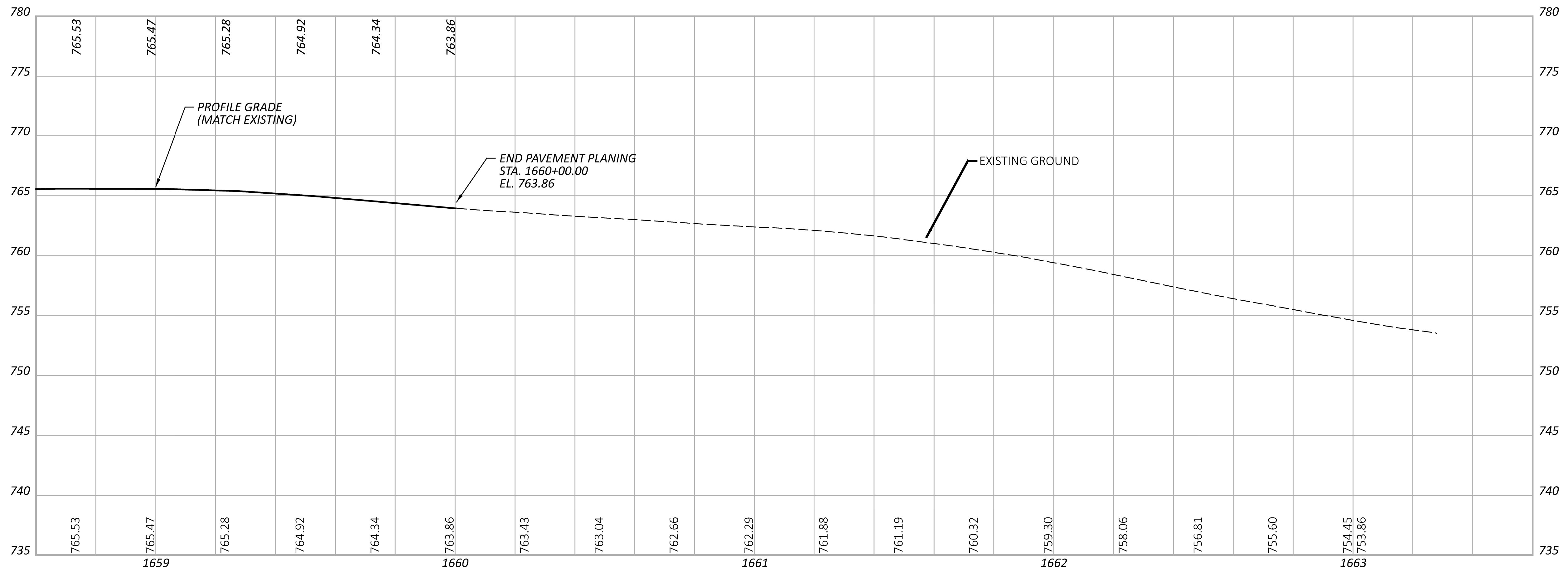
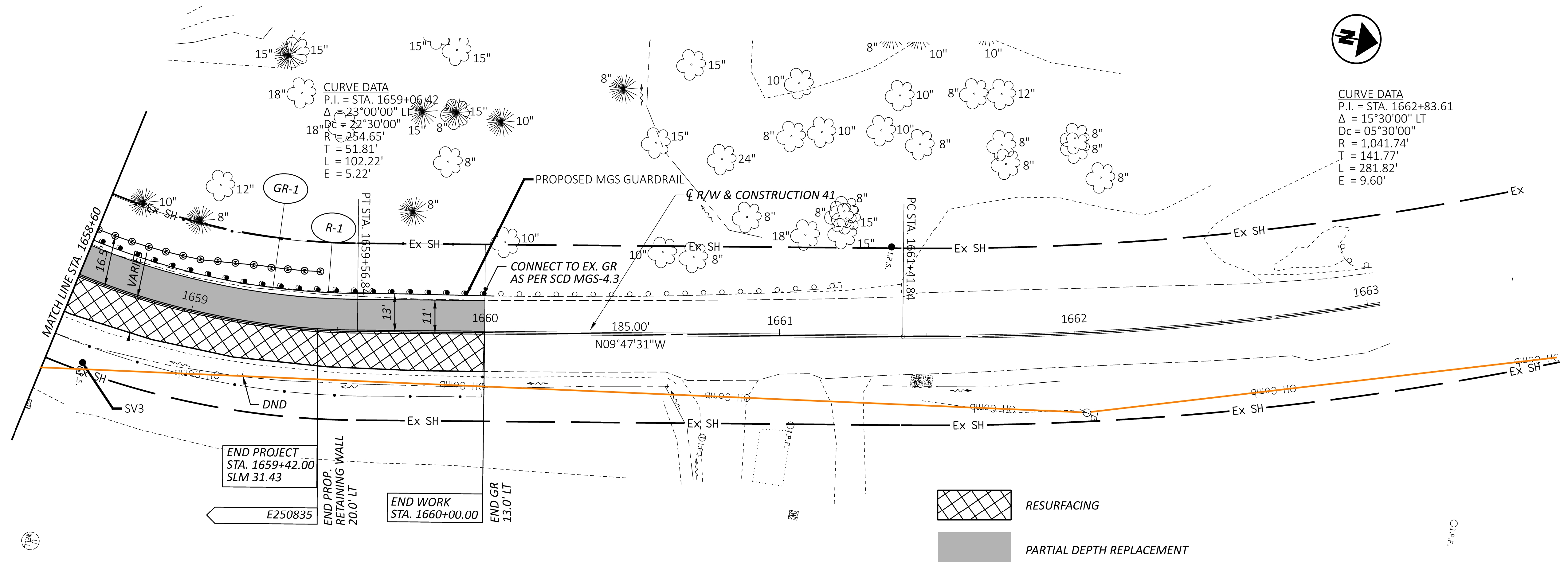
REF NO.	SHEET NO.	STA. TO STA.	SIDE	202		209		606	
				GUARDRAIL REMOVED	DITCH CLEANOUT, AS PER PLAN	GUARDRAIL TYPE	MGS HALF POST SPACING, AS PER PLAN	GUARDRAIL TYPE	MGS HALF POST SPACING, AS PER PLAN
				FT	FT	FT	FT	FT	FT
D-1	P. 12	1655+50 TO 1657+00	RT		150				
GR-1	PP. 12-13	1655+50 TO 1660+00	LT					450	
R-1	PP. 12-13	1655+50 TO 1660+00	LT			450			
TOTALS CARRIED TO GENERAL SUMMARY				450	150			450	

CURVE DATA
P.I. = STA. 1655+00.63
 $\Delta = 08^{\circ}10'00''$ RT
Dc = $08^{\circ}30'00''$
R = 674.07'
T = 48.12'
L = 96.08'
E = 1.72'

E250835
CURVE DATA
P.I. = STA. 1656+04.98
 $\Delta = 42^{\circ}00'00''$ RT
Dc = $39^{\circ}00'00''$
R = 146.91'
T = 56.39'
L = 107.69'
E = 10.45'



Aerial Frontier Lines To Remain



PLAN AND PROFILE
 STA. 1658+50.00 TO 1663+7.48

DESIGN AGENCY

DESIGNER
 MWH

REVIEWER
 MCM 12-8-25

PROJECT ID
 123193

SHEET TOTAL
 P. 13 43