

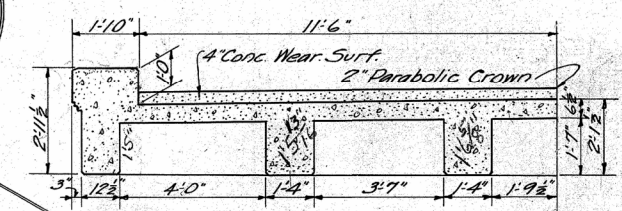
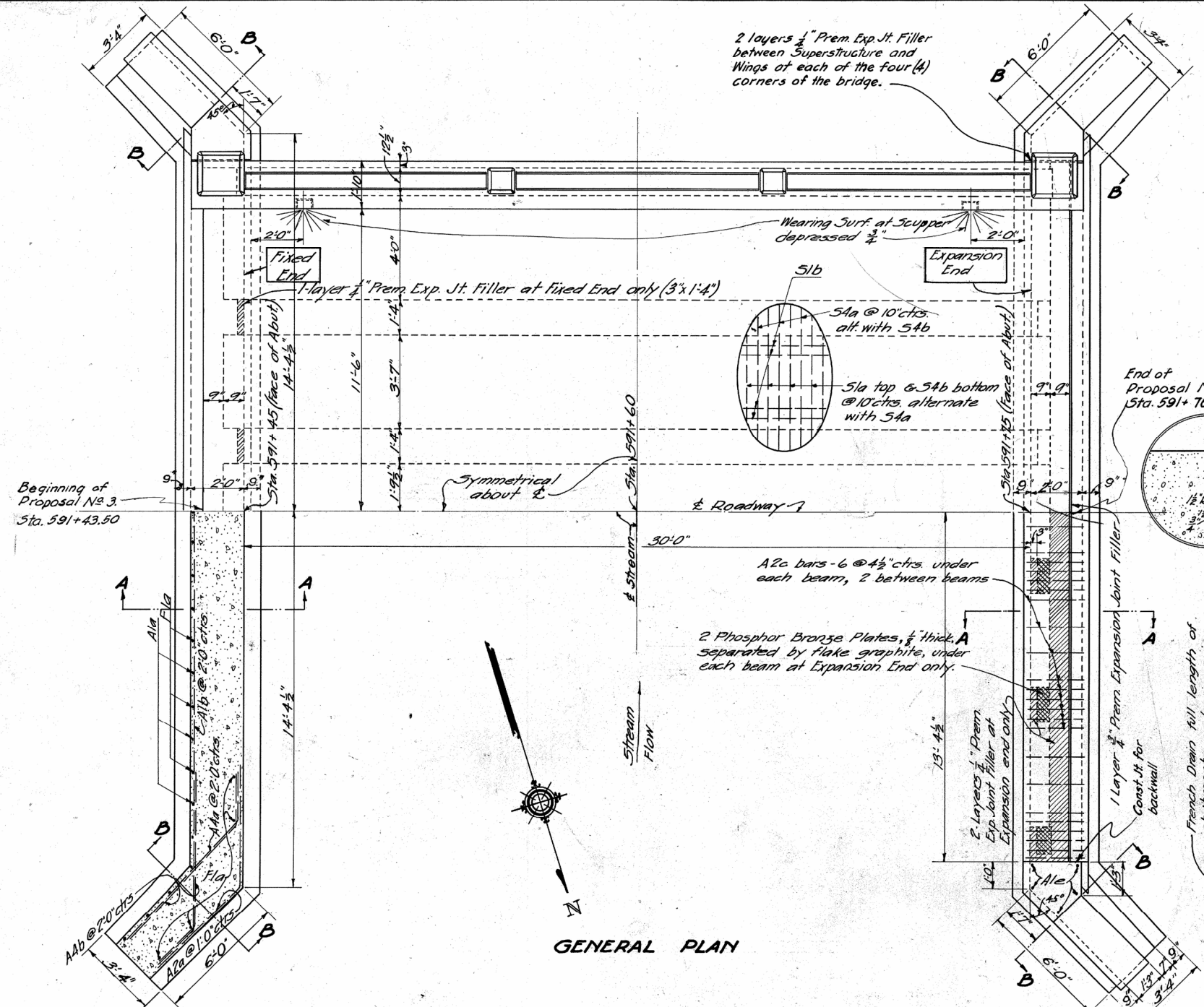
FED. ROAD DIST. NO.	STATE	FED. AID PROJECT	FISCAL YEAR
10	OHIO		1930

S.H.(C.H.)105 - SEC. E2 & 1
BELMONT COUNTY

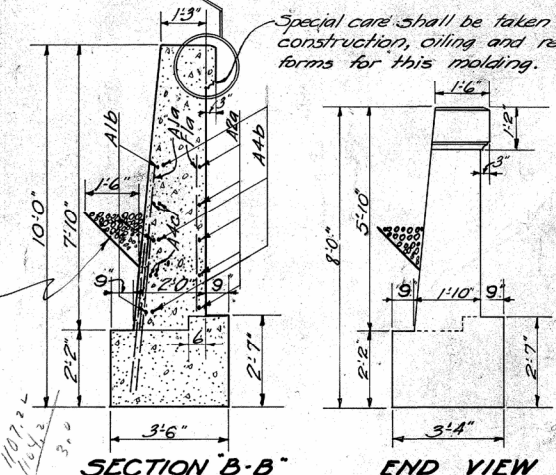
SUBSTRUCTURE STEEL LIST				
Mark	Size	Shape	Spacing No.	Length Weight
A4a	3/8"		2'-0"	12 93" 122
A4b	3/8"		2'-0"	16 8'-0" 135
A2a	1/2"		1'-0"	20 9'-0" 120
A2b	1/2"		1'-0"	54 8'-0" 290
A2c	1/2"		as shown	92 4'-3" 262
A1a	3/8"	Str. T.	2'-6"	32 4'-9" 57
A1b	3/8"		2'-0"	6 36'-0" 81
A1c	3/8"	Str. T.	as shown	8 26'-6" 80
A1d	3/8"	Str. T.	as shown	16 3'-0" 18
A1e	3/8"	Str. T.	as shown	20 4'-6" 34
F1a	3/4"	Str. T.		2'-6" 46 4'-3" 74
F1b	3/4"	Str. T.		2'-6" 32 4'-0" 47
			37	Total 1320

SUPERSTRUCTURE STEEL LIST	
Superstructure Steel same as shown on Std. Dwg. No. B-30-2430	

NOTES:
SUPERSTRUCTURE for this bridge shall be Std. Beam Bridge, 30'-0" Span, 24'-0" Roadway as shown on Standard Drawing No. B-30-2430 except that there shall be no over bridge under full dead load, but extra care shall be taken to prevent sag.
WET EXCAVATION includes all excavation below: Elev. 1101.00
Dry Excavation includes all excavation above Elev. 1101.00 except that which is included in channel excavation
ROCK EXCAVATION shall extend at least 1'-3" into solid rock and the rock excavation shall be completely finished with concrete.
NO HORIZONTAL CONSTRUCTION JOINTS other than those shown will be permitted. Vertical construction joints necessary for construction allowed only by special permission of the Engineer. All construction joints at abutments, above low water elevation, shall be sealed on both sides.
"B" Waterproofing for which payment is included with contract.



TYPICAL SECTION
(See Std. Dwg. No. B-30-2430 for details)



SECTION B-B END VIEW

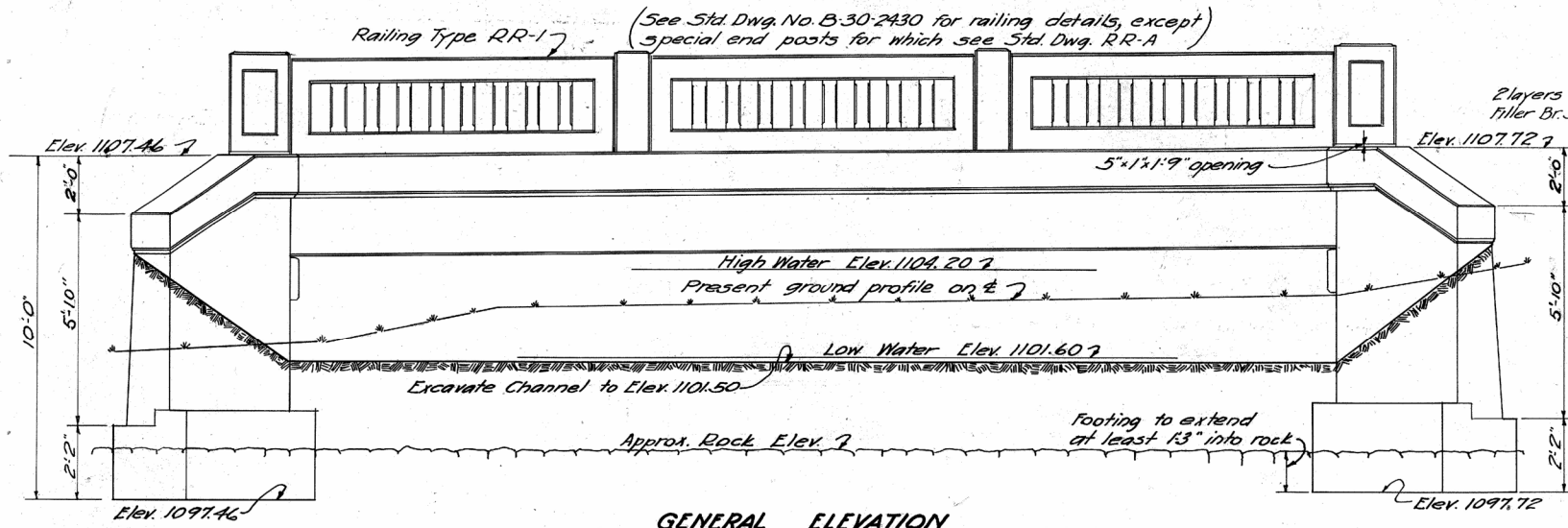
PROPOSAL No. 3
(Sta. 591+43.50 to Sta. 591+76.56)

ESTIMATED QUANTITIES
SUBSTRUCTURE

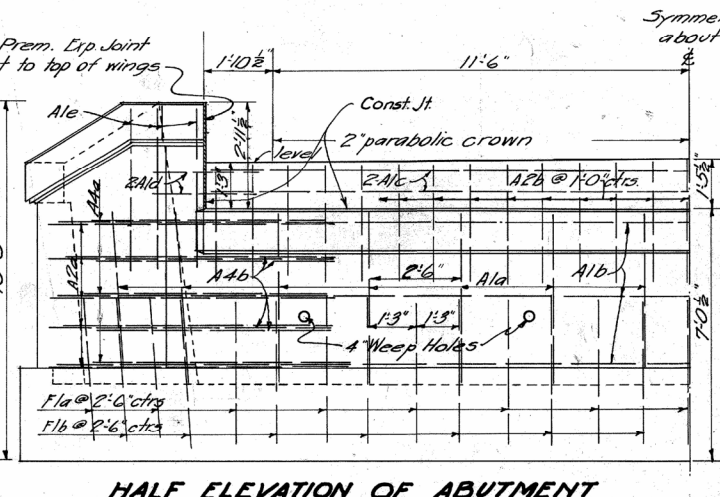
Channel Excavation	830 Cu. Yds.
Dry Excavation	20 Cu. Yds.
Wet Excavation	40 Cu. Yds.
Rock Excavation	13 Cu. Yds.
Concrete 1:6 1/2 mix (footings)	23.3 Cu. Yds.
Concrete 1:6 1/2 mix (walls)	32.9 Cu. Yds.
Reinforcing Steel	1320 Lbs.

SUPERSTRUCTURE

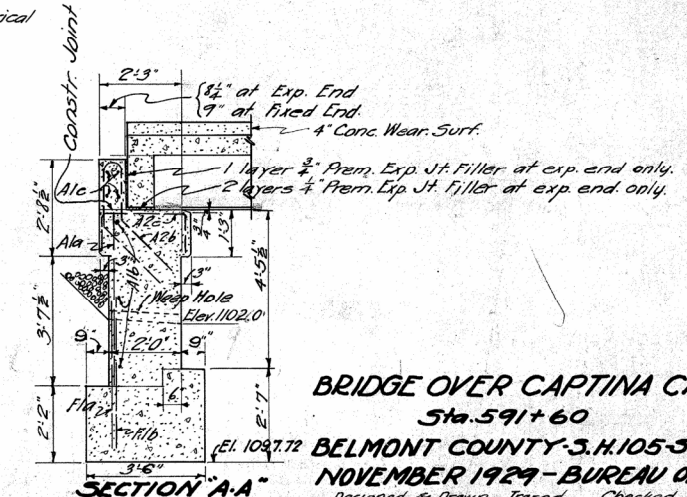
Concrete 1:5 1/2 mix	371 Cu. Yds.
Reinforcing Steel	10620 Lbs.
1/2" Prem. Exp. Joint Filler	88 Sq. Ft.
1/4" Prem. Exp. Joint Filler	62 Sq. Ft.
1/2" Phos. Bronze Plates	45 Lbs.
Cast Iron Scuppers	4 pcs.
Railing Type R.R-1	67 Lin. Ft.
Wearing Surf. (4" Conc.)	843 Sq. Yds.



GENERAL ELEVATION



HALF ELEVATION OF ABUTMENT



SECTION A-A

BRIDGE OVER CAPTINA CREEK
Sta. 591+60
BELMONT COUNTY-S.H.105-SEC. E2 & 1
NOVEMBER 1929-BUREAU OF PUBLIC WORKS
Designed & Drawn Traced Checked Reviewed
A.J.F. J.R.N. V.B.C. & R.E.D. J.H.K.