

No PID
C No. 780059

STATE OF OHIO

DEPARTMENT OF TRANSPORTATION

I-480-3 (4) 153

FED. RD. DIVISION	STATE	PROJECT	
5	OHIO	I-480-3(4)153	1 375

LORAIN COUNTY
LOR. - 480-0.00

"LIMITED ACCESS"

This improvement is especially designed for thru traffic and has been declared a Limited Access Highway or Freeway by action of the Director of Transportation, in accordance with the provisions of Sec. 5511.02 of The Revised Code of Ohio.

1977 SPECIFICATIONS

The Standard Specifications of the State of Ohio, Department of Transportation, including changes and supplemental specifications listed in the proposal, shall govern this improvement.

The Right of Way for this improvement will be provided by the State of Ohio.

I hereby approve these plans and declare that the making of this improvement will not require the closing of the highway to traffic and that provisions for maintenance and safety of traffic will be as set forth on the plans and estimates.

Approved A. D. Reader
Date 1-30-76 District Deputy Director of Transportation
Approved Robert B. Pfeiffer
Date 12-21-77 Engineer, Bureau of Bridges and Structures
Approved R. E. Guthrie
Date 12-22-77 Chief Engineer, Planning and Design
Approved David L. Wein
Date 12-22-77 Director, Department of Transportation

INDEX OF SHEETS

Title Sheet	1	Pavement Details	64-76
Schematic Plan	2-3	Storm Sewer Profiles	77-79
Typical Sections	4-8	Culvert & Ditch Details	80-91
General Notes	9-13	EB I-480 & EB U.S. 20 Cross Sections	92-120
General Summary	14-17	WB I-480 & WB U.S. 20 Cross Sections	121-145
Pavement Calculations	18-20A	EB & WB I-480 Cross Sections	146-154
Special Details	21-24B	SR 10 Interchange, Ramps Cross Sections	155-179
Horizontal Control Data	25-26	SR 10 (Lorain Road) Cross Sections	180-189
Superelevation Tables	27-28	Water Work Plans	190-192
EB I-480 & EB U.S. 20 Plan & Profile	29-39	Traffic Control Plans	193-209
WB I-480 & WB U.S. 20 Plan & Profile	40-49	Lighting Plan	210-241C
EB & WB I-480 Plan & Profile	50-53	Structures Over 20' Length	242-355
SR-10 Interchange, Ramps Plan & Profile	54-58	Right-of-Way Plans	356-375
SR-10 (Lorain Rd) Plan & Profile	59-63		

Sheets 274 & 275 revised 5.11.78 EBL

LINE DATA

Begin Project ~ Sta. 975+50.00 to Sta. 998+03.01 (Bk) @ I-480 E.B. = 2,253.01 L.F.
Sta. 0+301.74(h) to Sta. 32+31.00 (Toll Plaza) @ I-480 E.B. = 3,200.83 L.F.
Sta. 37+31.00 (Toll Plaza) to Sta. 74+11.39 @ I-480 E.B. = 3,680.39 L.F.
Sta. 74+11.39 to Sta. 100+00.00 @ I-480 End Project = 2,588.61 L.F.

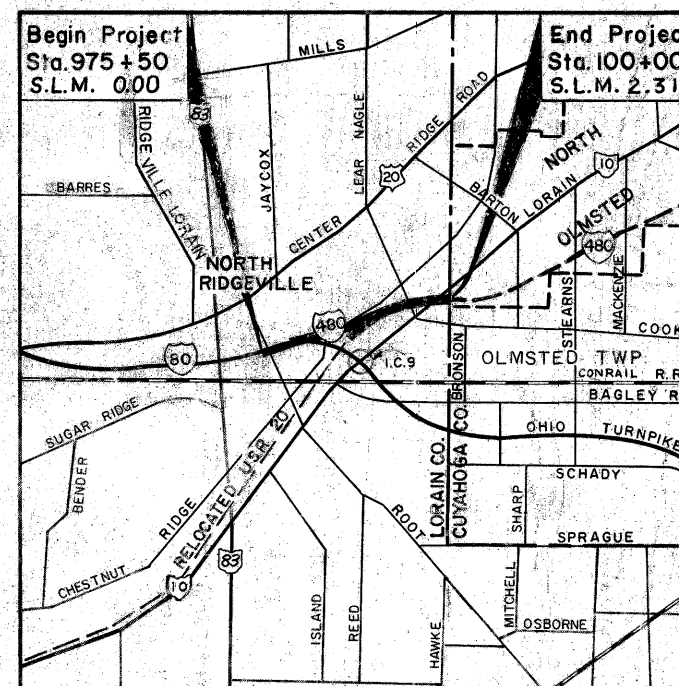
LENGTH OF PROJECT = 11,722.84 LF or 2.220 MILES

ADD FOR WORK
Lorain Rd. (S.R.10)
Sta. 1137+30.00 to Sta. 1153+80.00 = 1,650.00 L.F.

I-480
Sta. 973+35.00 to Sta. 975+50.00 = 215.00 L.F.
Sta. 100+25.34 to Sta. 105+37.00 = 511.66 L.F.
LENGTH OF ADDITIONAL WORK = 2,376.66 L.F.
ADD PROJECT LENGTH = 11,722.84 L.F.

LENGTH OF WORK = 14,099.50 L.F. or 2.670 MILES

SUPPLEMENTAL SPECIFICATIONS	
NUMBER	DATE
801	4-25-77
808	1-1-71
814	1-1-69
836	3-12-76
838	1-13-77
839	11-25-70
844	11-8-74
846	4-25-77
948	2-19-74
950	4-25-77
951	4-25-77
5625	1-11-74
5713	1-11-74
1002	1-3-77



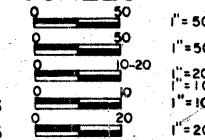
LOCATION MAP

SCALE OF MILES

Portion To Be Improved
State Routes
U.S. Routes
Interstate Routes
City Streets
To Be Improved Under Separate Contract

PLAN
PROFILE: HORIZ.
VERT.
CROSS SECTIONS
PAVEMENT DETAILS

SCALES



STANDARD DRAWINGS	
Number	Date
BP-1	6-1-69
BP-2	12-6-76
BP-3	12-6-76
BP-4	12-6-76
BP-5	8-11-73
BP-7	12-6-76
BP-9	12-6-76
BP-10	1-3-75
CB-3	1-1-76
CB-3A	1-1-76
CB-5	9-1-69
CB-6	6-1-69
F-1	5-1-76
BP-6	6-1-6
F-3	5-1-76
F-5	5-1-76
F-6	5-1-76
GR-1	12-6-76
GR-2B	12-6-76
GR-3	12-6-76
GR-4	12-6-76
GR-4A	7-26-76
GR-5	1-1-71
GR-6	1-1-71
HW-4	1-1-70
MC-1	6-13-69
MC-3	6-1-73
MC-4	7-26-76
MC-6	6-1-65
MC-7	10-15-76
MC-8	6-12-75
MC-10	5-1-76
MH-1	6-12-75
MH-3	6-12-75
MH-5	6-12-75
L-1	6-1-73
AS-1-72	6-30-71
BR-1-67	10-15-7
RB-1-55	2-2-5
SD-1-69	6-12-6
SP-53	6-30-6
HL-1	9-6-73
HL-2	7-27-73
HL-3	7-27-73
HL-4	1-21-76
HL-5	9-6-73
HL-6	3-22-7
HL-7	1-21-76
HL-8	1-21-76
HL-9	3-22-7
HL-10	1-21-76
HL-11	4-6-73
HL-12	4-6-73
HL-15	1-21-76
HL-16	4-6-73
HL-19	3-22-7

PLANS PREPARED BY
ALDEN E. STILSON & ASSOCIATES
CONSULTING ENGINEERS
75 PUBLIC SQUARE
CLEVELAND OHIO

DESIGN DESIGNATION	
1970 A.D.T. =	18.00
1987 A.D.T. =	40.00
D.H.V. =	2.00
D. (directional distribution)	6
T. (percent BAC trucks)	5
V. (design speed) 60 M.P.H.	

DEPARTMENT OF TRANSPORTATION
FEDERAL HIGHWAY ADMINISTRATION

APPROVED:

DIVISION ADMINISTRATOR

DATE:

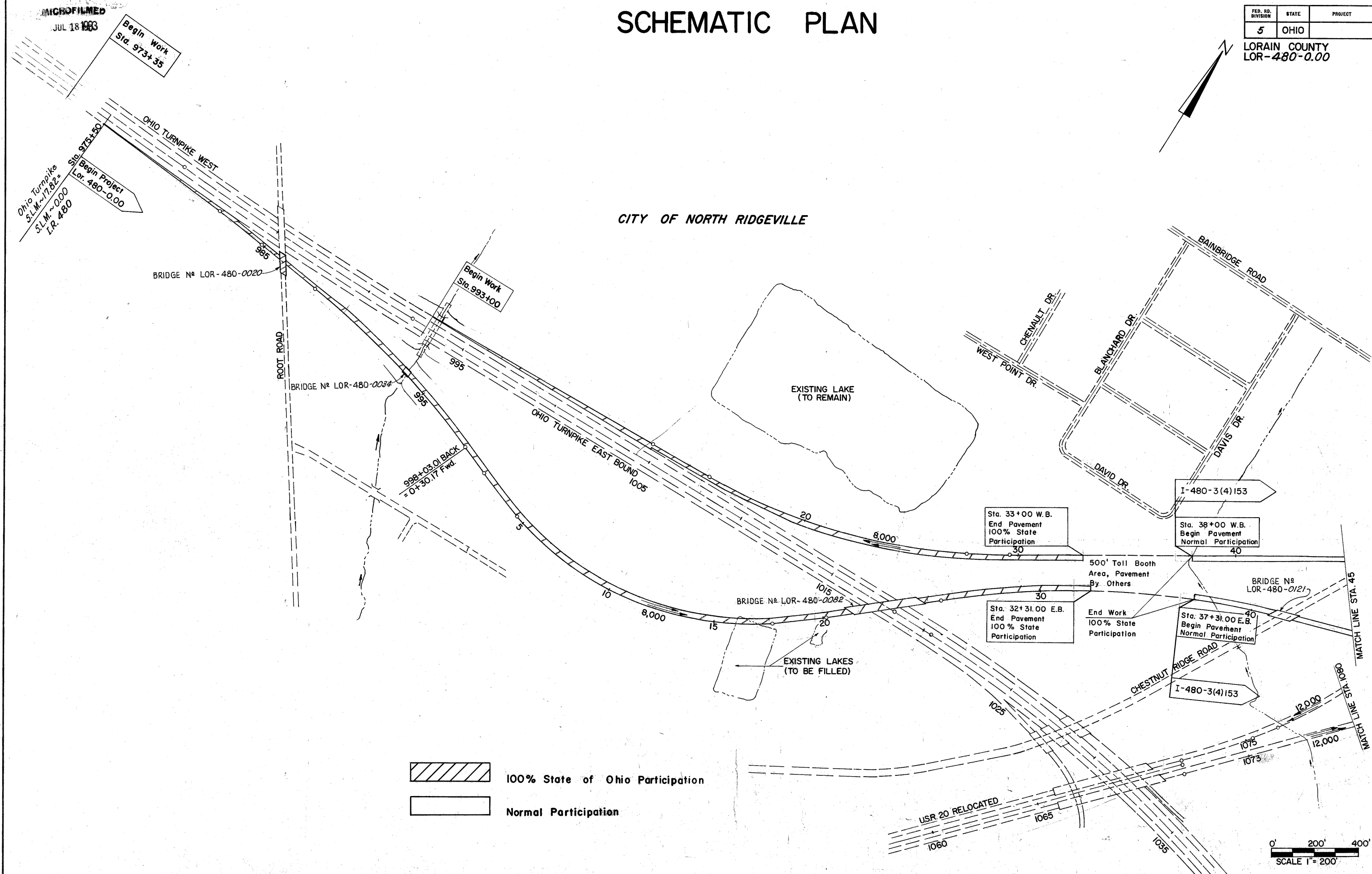
FILE NUMBER	LORAIN COUNTY	LOR- 480-000
	DATE OF LETTING	_____
	CONTRACT NUMBER	_____

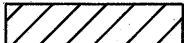
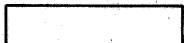
SCHEMATIC PLAN

FED. RD. DIVISION	STATE	PROJECT	
5	OHIO		2 375

LORAIN COUNTY
LOR-480-0.00

CITY OF NORTH RIDGEVILLE



 100% State of Ohio Participation
 Normal Participation

0' 200' 400'
SCALE 1" = 200'

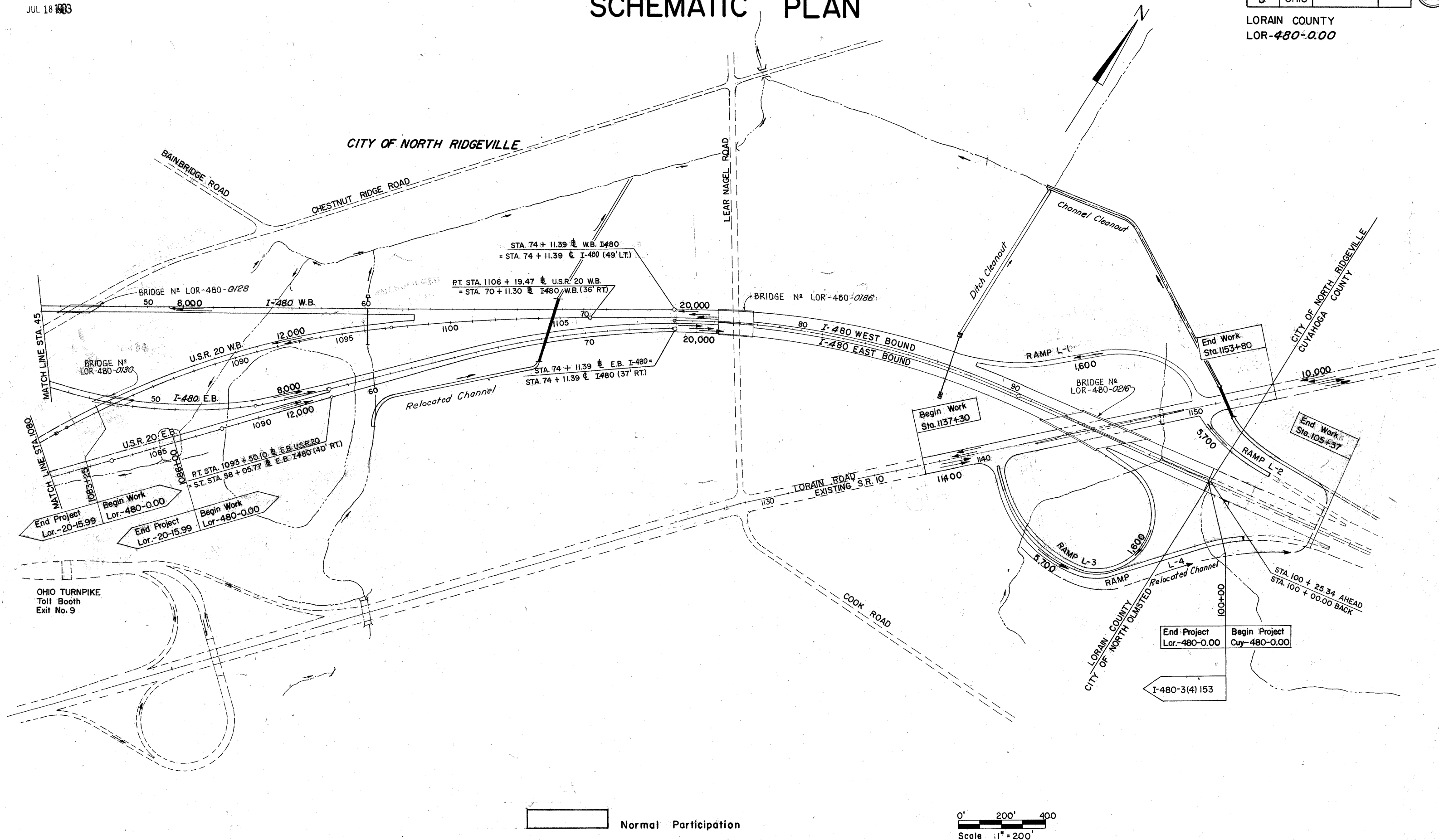
MICROFILMED
JUL 18 1983

SCHEMATIC PLAN

FED. RD. DIVISION	STATE	PROJECT
5	OHIO	

3
375

LORAIN COUNTY
LOR-480-0.00



Normal Participation

0' 200' 400'
Scale 1" = 200'

MICROFILMED
JUL 19 1983

FED. RD. DIVISION	STATE	PROJECT	TYPE FUNDS
2	OHIO		

LORAIN COUNTY
LOR-480-0.00

290
375

NOTE:

Horizontal clearance is from future edge of pavement.

Earthwork limits shown are schematic. Actual limits shall conform to Plan cross sections.

* Elevation of slope at face of abutment.

BRIDGE NO. LOR-80-1910 APPEARING THROUGHOUT THIS BRIDGE PLAN SHALL BE CONSIDERED TO READ BRIDGE NO. LOR-480-0128

PROPOSED STRUCTURE

TYPE: Continuous steel beam with reinforced concrete deck and substructure.

SPANS: 54'-3", 69'-6", 54'-3" % brgs.

ROADWAY: 42'-0" f.p. parapets of BR-1-67 railing.

LOADING: HS 20-44 & Interstate Alternate.

WEARING SURFACE: Monolithic Conc.

SKEW: 59°44'00" Lt. Forward.

ALIGNMENT: Tangent

APPROACH SLABS: 45'-1-72 (MOD), 30' Long

TRAFFIC ESTIMATE

Design Year - 1987
Total A.D.T. - 8000

ALDEN E. STILSON & ASSOCIATES, LIMITED
CONSULTING ENGINEERS
CLEVELAND, OHIO COLUMBUS, OHIO WHEELING, W. VA.

SITE PLAN

BRIDGE NO. LOR 80-1910

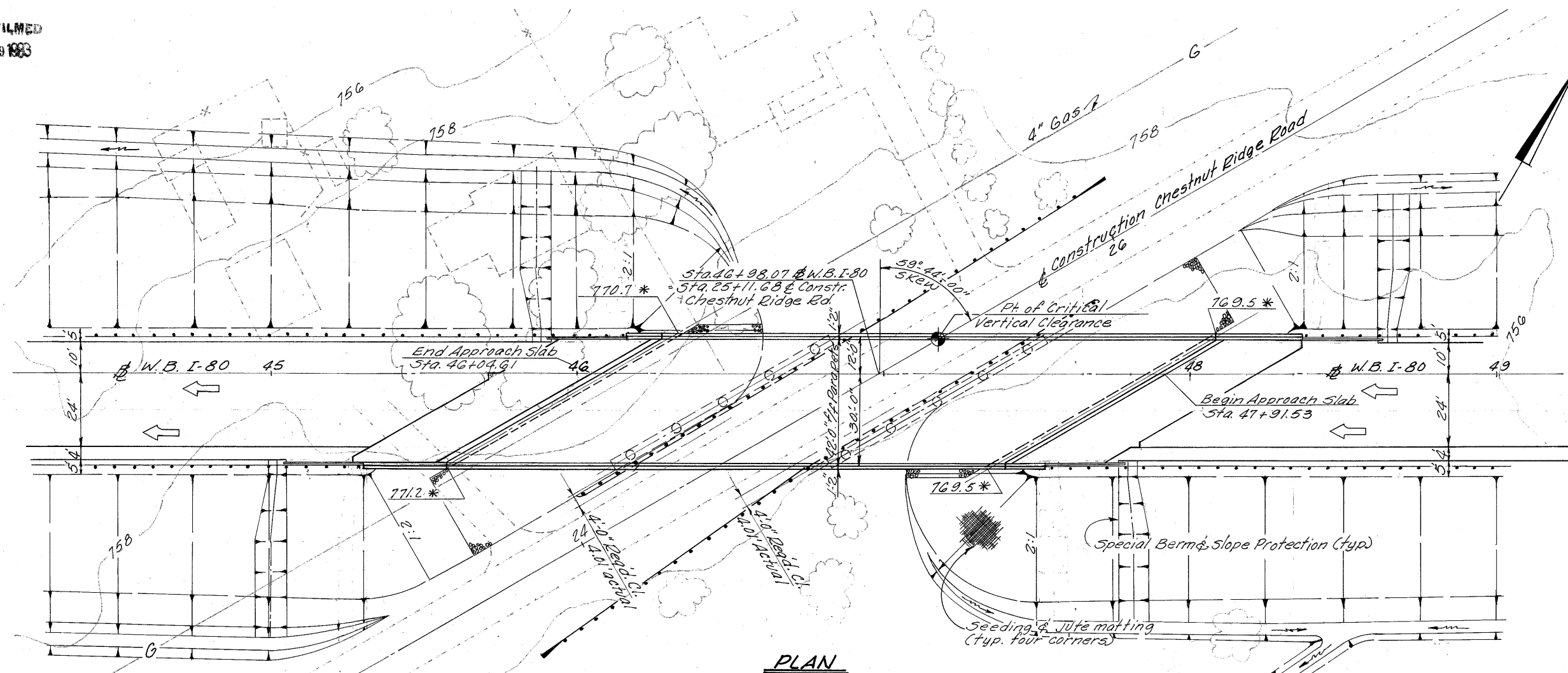
W.B. I-80 OVER CHESTNUT RIDGE ROAD

LORAIN COUNTY STA. 46+04.61

STA. 47+91.53

SCALE 1"=20'-0"

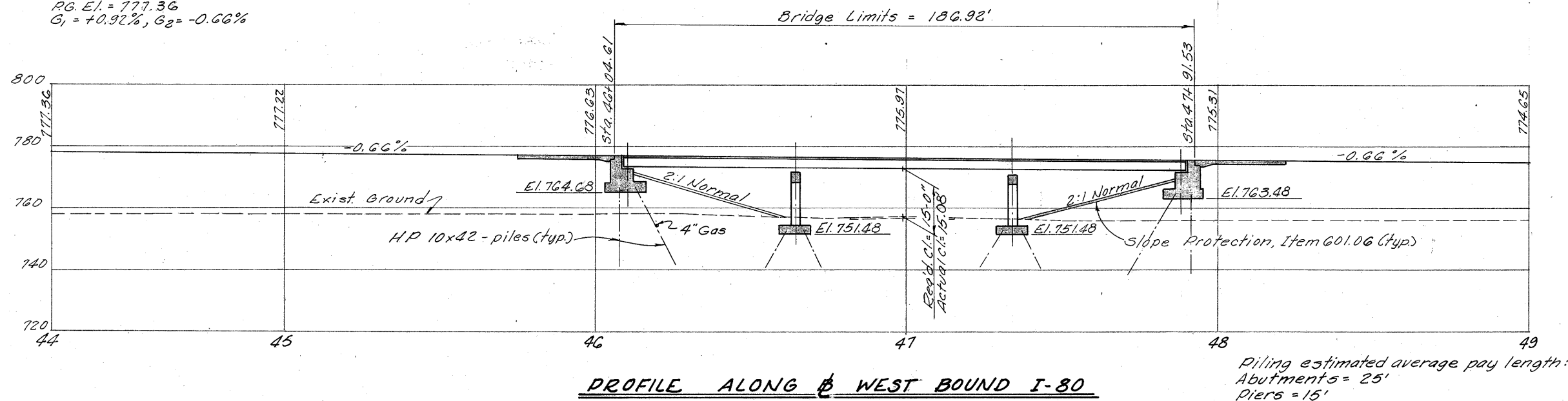
DESIGNED	DRAWN	TRACED	CHECKED	REVIEWED	DATE	REVISED
G.W.M.	G.W.M.	R.T.	B.I.P.	G.W.M.	5/1/70	



PLAN

**VERTICAL CURVE DATA
W.B. I-80**

P.V.I. Sta. 44+00
300' V.C.
E.I. 777.35
Corr = -0.59
P.G. E.I. = 777.36
G₁ = +0.92%, G₂ = -0.66%



PROFILE ALONG WEST BOUND I-80

Piling estimated average pay length:
Abutments = 25'
Piers = 15'

JUL 19 1963

291
375

LORAIN COUNTY
LOR-480-0.00

<u>DESCRIPTION</u>	<u>NO.</u>	<u>DATE</u>
PAINTING FOR NEW STRUCTURAL STEEL	846	4-25-77
INORGANIC ZINC SILICATE PAINT	950	4-25-77
BLUE-GREEN VINYL PAINT	951	4-25-77

DESCRIPTION	DWG. NO.	SHT.	DATE
END DAM AND END CROSSFRAME	SD-1-69	1-2	6-12-69
CURB PLATES	SD-1-69	2	6-12-69
SCUPPERS	SD-1-69	3	6-12-69
MOMENT PLATES	SD-1-69	3	6-12-69
BOLTED SPLICES	SD-1-69	4	6-12-69
BRIDGE ROADWAY RAILING	BR-1-67	1	10-15-71 R
ROCKERS AND BOLSTERS	RB-1-55		2- 2-59 R
APPROACH SLABS	AS-1-72 (MOD)*		6-30-72
STRUCTURE GROUNDING	HL-7		1-21-76

(R INDICATES REVISED DATE)

DESCRIPTION	NO.	DATE
CHEMICAL ADMIXTURE FOR CONCRETE, TYPE A, B OR D	808	1- 1-71
CONCRETE CURING AND PROTECTIVE MEMBRANE	836	3- 12-75
<i>SPECIAL PILE TESTS</i>	<i>838</i>	<i>1-13-77</i>

CONTRACTION JOINTS & END DAMS SHEET 354

THIS STRUCTURE CONFORMS TO THE 'STANDARD SPECIFICATIONS FOR HIGHWAY BRIDGES' ADOPTED BY THE AMERICAN ASSOCIATION OF STATE HIGHWAY OFFICIALS, 1969, INCLUDING THE OHIO 'SUPPLEMENT' TO THESE SPECIFICATIONS.

DESIGN LOADING - HS20-44 AND THE INTERSTATE
ALTERNATE LOADING
CONCRETE CLASS C - UNIT STRESS 1200 PSI FOR
SUPERSTRUCTURE
UNIT STRESS 1333 PSI FOR
SUBSTRUCTURE
STRUCTURAL STEEL - ASTM A36 - UNIT STRESS 20000 PSI
REINFORCING STEEL - ASTM A615, A616 OR A617 - UNIT
STRESS 20000 PSI.
SPIRAL REINFORCEMENT MAY BE
PLAIN BARS ASTM A82, OR A615.

THE EMBANKMENTS SHALL BE CONSTRUCTED TO THE LEVEL OF THE SUBGRADE FOR A MINIMUM DISTANCE OF 200 FEET BACK OF THE ABUTMENTS. EXCAVATION SHALL THEN BE MADE FOR THE ABUTMENTS AND PIERS.

PILES SHALL BE DRIVEN TO A MINIMUM BEARING
CAPACITY OF-
35 TONS PER PILE FOR THE ABUTMENTS AND WINGWALLS
35 TONS PER PILE FOR THE PIERS

ALL EXPENSE INVOLVED IN RELOCATING THE AFFECTED UTILITY LINES SHALL BE BORNE BY THE OWNERS. THE CONCERN TO EITHER WOULD BE HELD TO A MINIMUM.

TWO LANES OF TRAFFIC WITH A MINIMUM HORIZONTAL WIDTH OF 20'-0 AND A MINIMUM VERTICAL CLEARANCE OF 13'-6 SHALL BE MAINTAINED ON CHESTNUT RIDGE ROAD AT ALL TIMES.

MINIMUM BAR LAP SHALL BE 30 DIAMETERS

* Std. Dwg. A5-1-72 shall be modified to provide 3" clearance to the top re-bars instead of the 2" shown and jacking holes shall be omitted.

[illegible]

ATTACHMENT OF GUARDRAIL TO CONCRETE PARAPETS:
CONCRETE INSERT ANCHOR ASSEMBLIES PER STANDARD
CONSTRUCTION DRAWINGS GR-3 AND GR-1 SHALL BE
PLACED DURING PARAPET CONSTRUCTION.

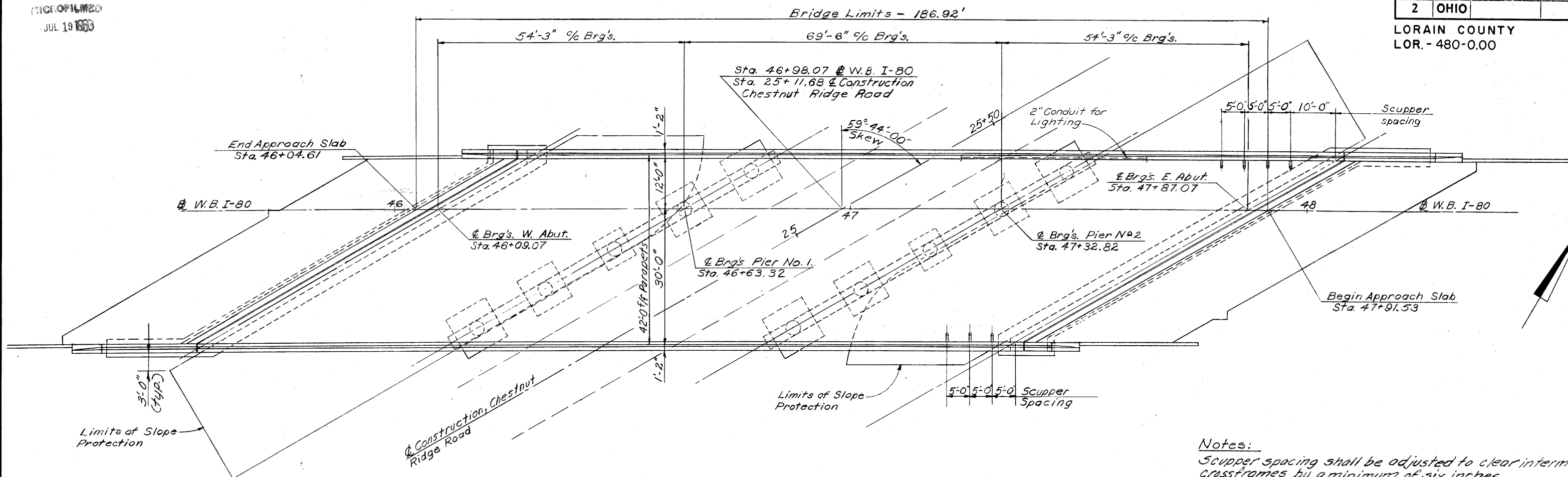
<p align="center">ALDEN E. STILSON & ASSOCIATES, LIMITED CONSULTING ENGINEERS CLEVELAND, OHIO COLUMBUS, OHIO WHEELING, W. VA.</p>						
<p align="center">GENERAL NOTES AND ESTIMATED QUANTITIES</p>						
<p align="center">BRIDGE No LOR-80-1910 W.B.I-80 OVER CHESTNUT RIDGE RD.</p>						
<p align="center">LORAIN COUNTY STA. 46 + 04.61 STA. 47 + 91.53</p>						
DESIGNED	DRAWN	TRACED	CHECKED	REVIEWED	DATE	REVISION
B.D.			U.M.A. 3-16-70	G.W.M.	3/1/70	

MICROFILMED
JUL 19 1983

FED. RD. DIVISION	STATE	PROJECT	TYPE FUNDS
2	OHIO		

LORAIN COUNTY
LOR. - 480-0.00

292
375

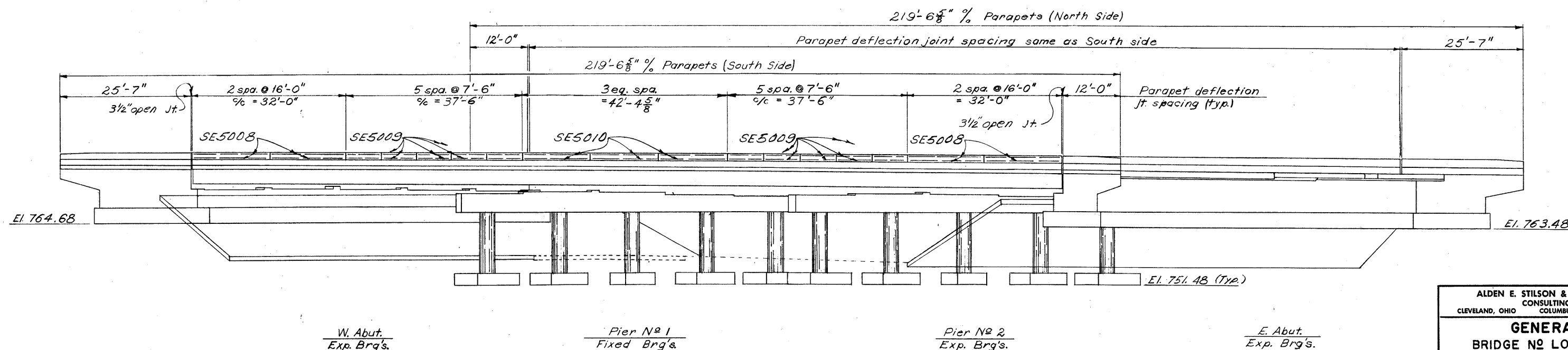


GENERAL PLAN

Notes:

Scupper spacing shall be adjusted to clear intermediate crossframes by a minimum of six inches.

Scupper spacing is along face of curb.

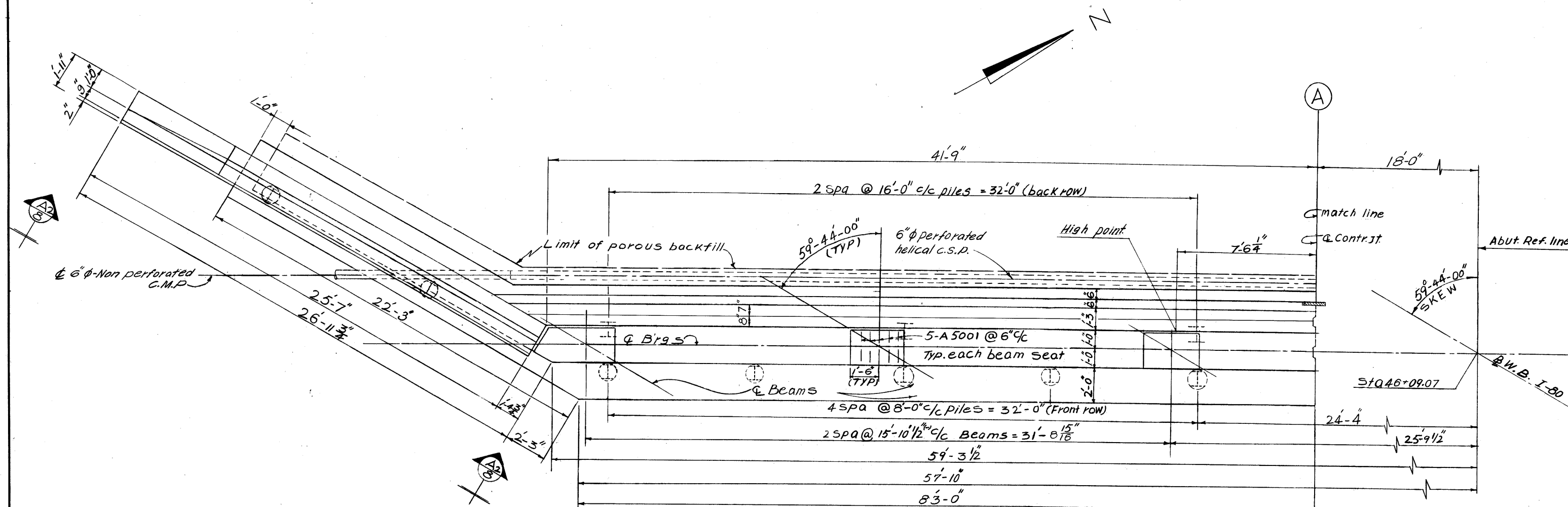


ELEVATION

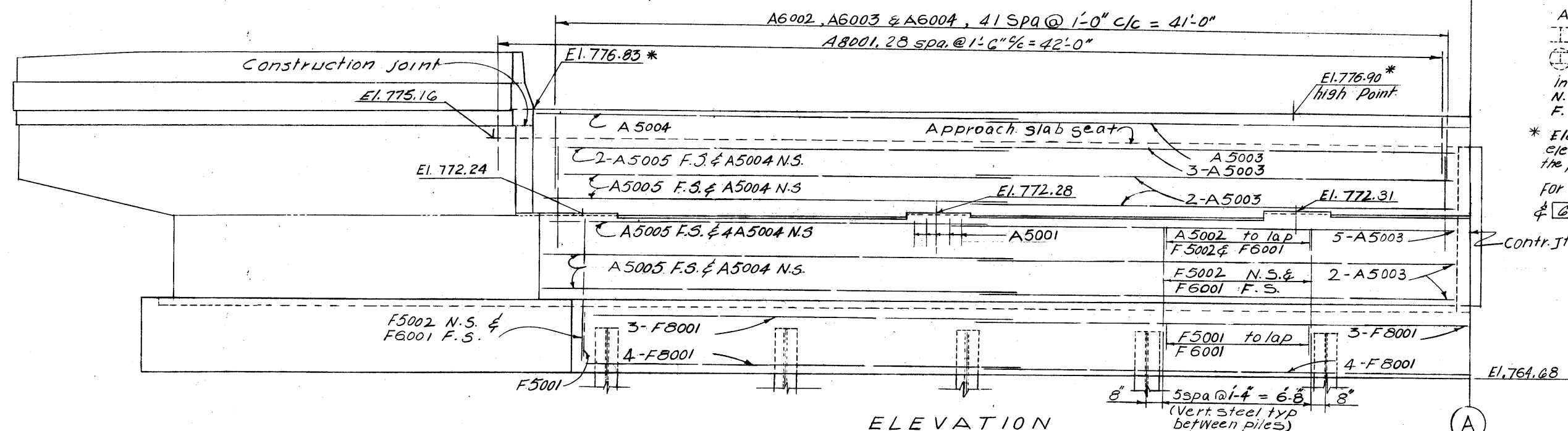
(Piles not shown)

ALDEN E. STILSON & ASSOCIATES, LIMITED CONSULTING ENGINEERS CLEVELAND, OHIO COLUMBUS, OHIO WHEELING, W. VA.						
GENERAL PLAN						
BRIDGE NO. LOR. - 80-1910 W.B. I-80 OVER CHESTNUT RIDGE ROAD						
LORAIN COUNTY					STA 46+04.61 STA 47+91.53	
DESIGNED	DRAWN	TRACED	CHECKED	REVIEWED	DATE	REVISED
R.S.S.	J.P.		B.I.P.	G.W.M.	5/7/70	

3/14



PART PLAN



ELEVATION

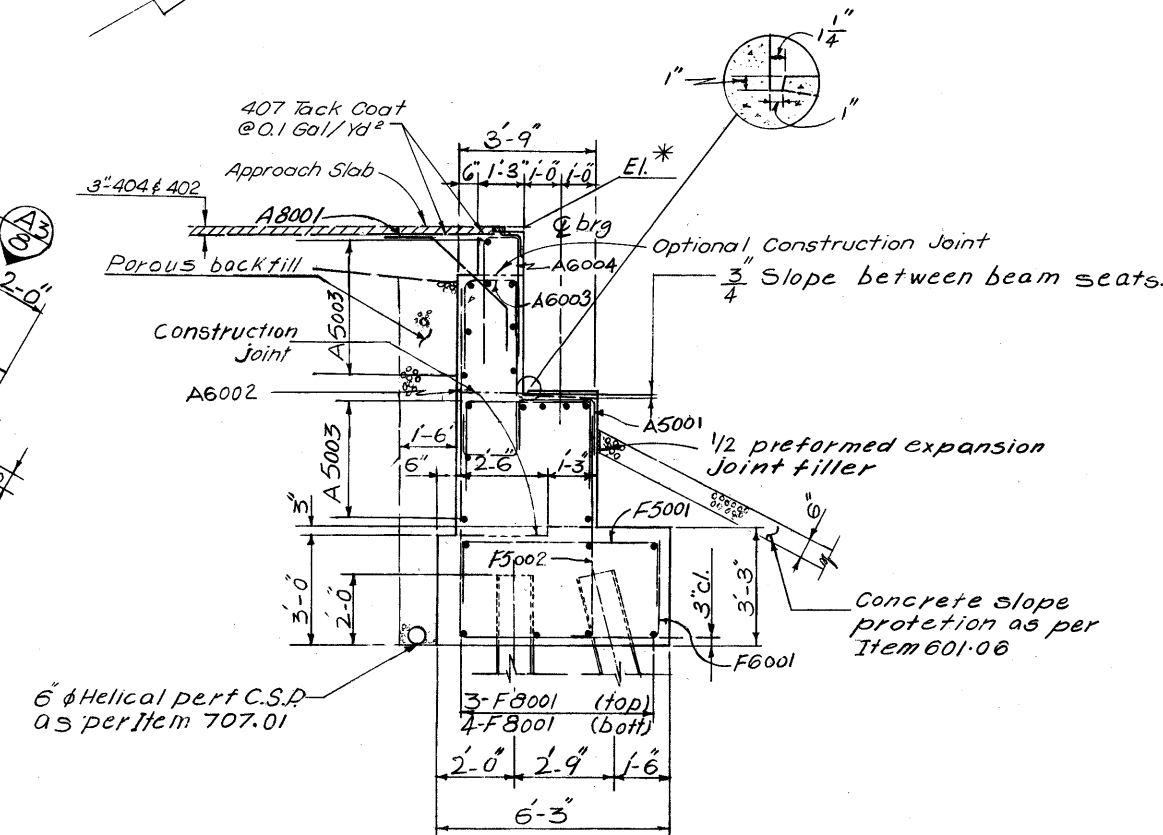
NOTES

- All piles are HP 10x42-Piles
- ⊥ Indicates vertical Piles
- ⊙ Indicates piles battered 1:4
- In reinforcing bar callouts
N.S. Indicates near side
F.S. Indicates far side

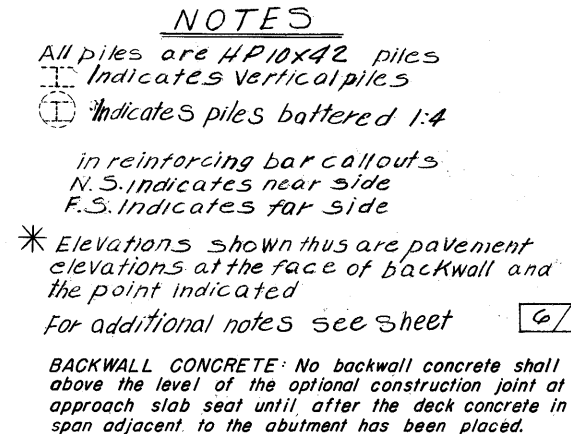
* Elevations shown thus are pavement elevations at the face of back wall and the point indicated.

For additional notes see sheet 5/14 & 6/14

ALDEN E. STILSON & ASSOCIATES, LIMITED			
CLEVELAND, OHIO	CONSULTING ENGINEERS	COLUMBUS, OHIO	WHEELING, W. VA.
WEST ABUTMENT DETAILS			
BRIDGE NO. LOR. - 80-1910			
W.B. I-80 OVER CHESTNUT RIDGE ROAD			
LORAIN COUNTY		STA. 46+04.61	
		STA. 47+91.53	
DESIGNED	DRAWN	TRACED	CHECKED
R.S.S.	M.M.A.		B.I.P.
			G.W.M.
			5/170



SECTION A₁-A₁



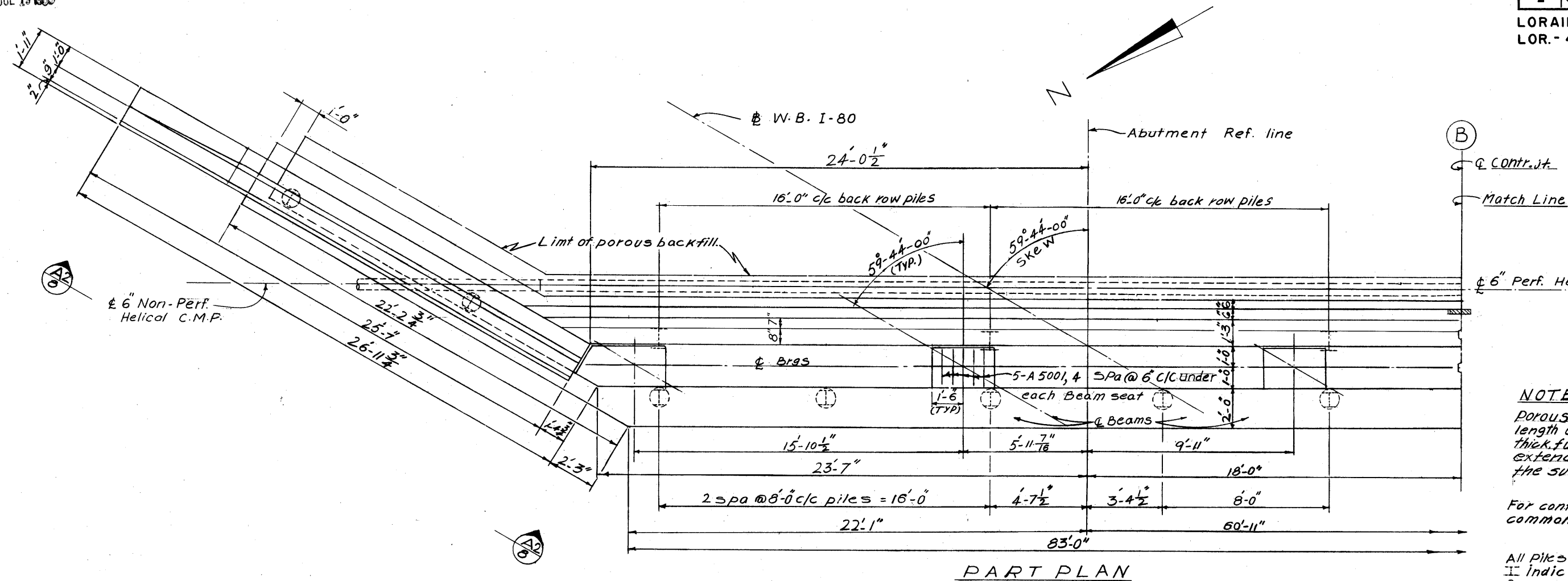
BACKWALL CONCRETE: No backwall concrete shall be placed above the level of the optional construction joint at the approach slab seat until, after the deck concrete in the span adjacent to the abutment has been placed.

ALDEN E. STILSON & ASSOCIATES, LIMITED CONSULTING ENGINEERS CLEVELAND, OHIO COLUMBUS, OHIO WHEELING, W. VA.						
WEST ABUTMENT DETAILS						
BRIDGE NO. LOR - 80-1910						
W.B. 1-80 OVER CHESTNUT RIDGE ROAD						
LORAIN COUNTY						
STA. 46+04.61						
STA. 47+91.53						
DESIGNED	DRAWN	TRACED	CHECKED	REVIEWED	DATE	REVISER
R.S.S.	M.M.A.		B.I.P.	G.W.M.	5/8/70	

REPRODUCED
JUL 19 1983

FED. RD. DIVISION	STATE	PROJECT	TYPE FUNDS
2	OHIO		295 375

LORAIN COUNTY
LOR. - 480-0.00



NOTES:
Porous backfill 1'-6" thick full length of abutment and 2'-0" thick full length of wings shall extend up to the plane of the subgrade.

For contraction joint details, see common details Sht. No. 355

All Piles are 14" P 10X42 piles
+ indicates vertical piles
⊙ indicates piles battered 1:4

in reinforcing bar callouts

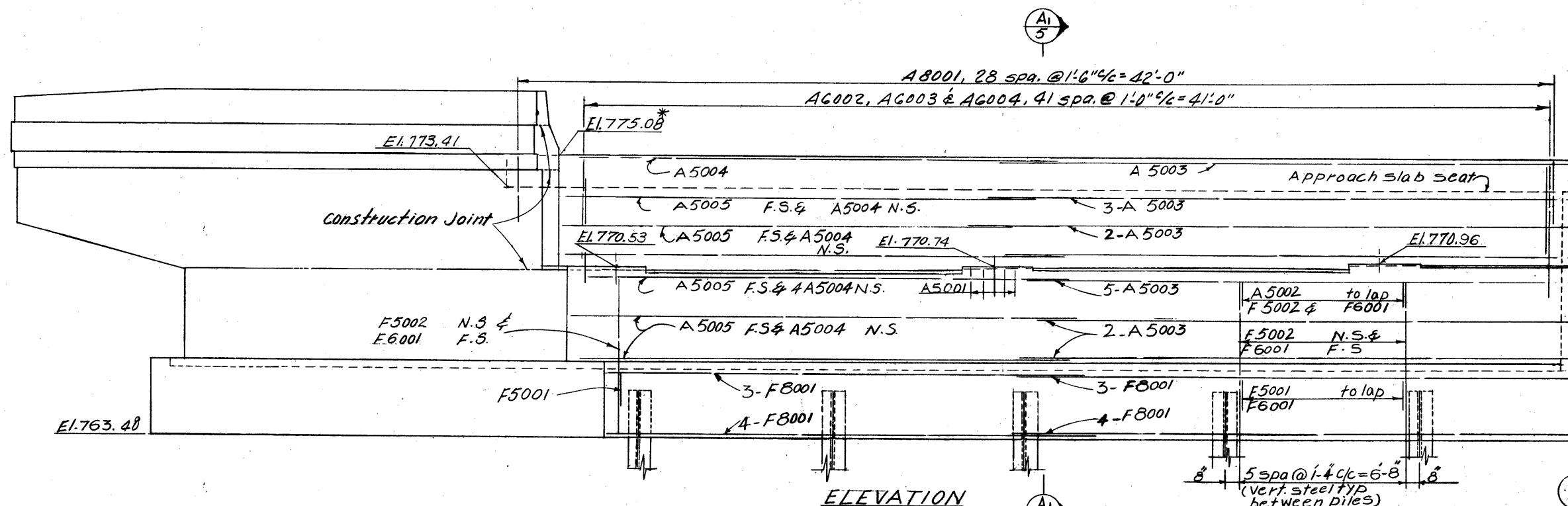
N.S. indicates near side
F.S. indicates far side

* Elevations shown thus are pavement elevations at the face of back wall and the point indicated.

Only that portion of the C.S.P. located in porous backfill shall be perforated. The 6" C.S.P. shall be extended out into the side slopes & terminated near the surface as shown on common details Sht. No.

Adjustable type elbows meeting specification requirements for gage and coating are acceptable for making bends in perforated corrugated steel pipe. Elbows need not be perforated.

See notes sheet 5/14

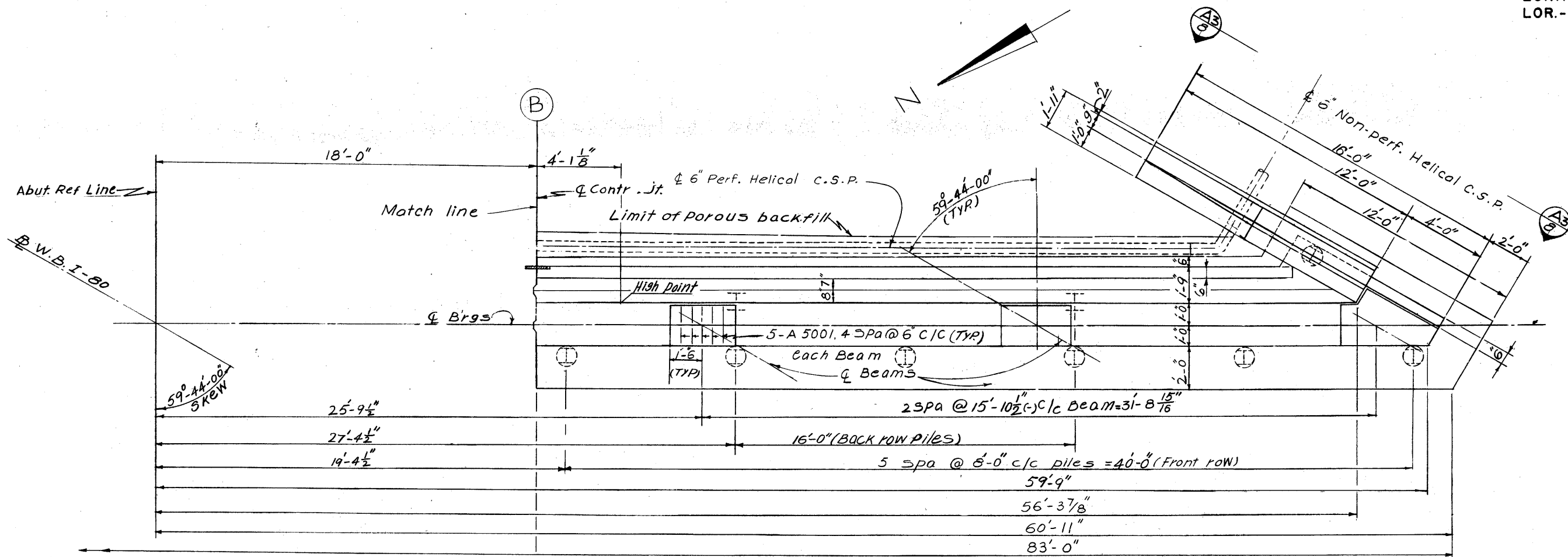


ALDEN E. STILSON & ASSOCIATES, LIMITED CONSULTING ENGINEERS CLEVELAND, OHIO COLUMBUS, OHIO WHEELING, W. VA.			
EAST ABUTMENT DETAILS BRIDGE NO. LOR. - 80-1910 W.B. I-80 OVER CHESTNUT RIDGE ROAD			
LORAIN COUNTY		STA 46+04.61 STA 47+91.53	
DESIGNED	DRAWN	TRACED	CHECKED
R.S.S.	M.M.A.		B.I.P.
		REVIEWED	DATE
		G.W.M.	5/6/70

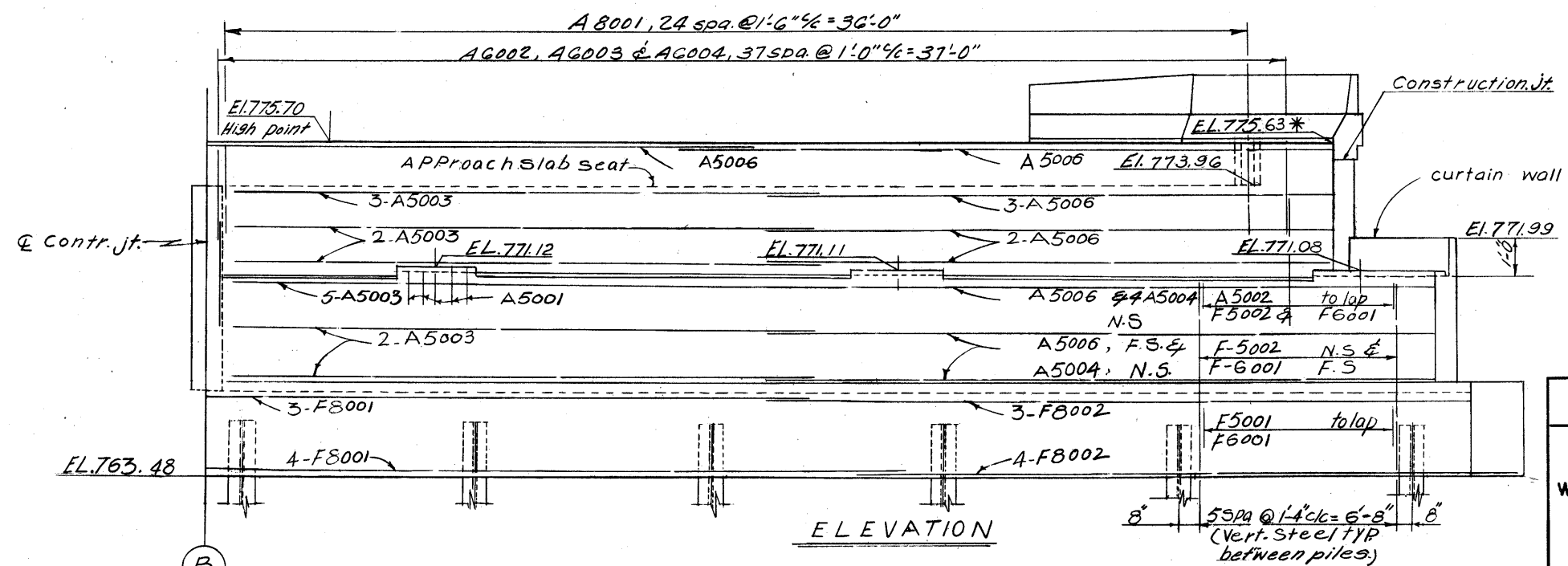
JUL 19 1980

FED. RD. DIVISION	STATE	PROJECT	TYPE FUNDS
2	OHIO		296 375

LORAIN COUNTY
LOR. - 480-0.00



PART PLAN



ELEVATION

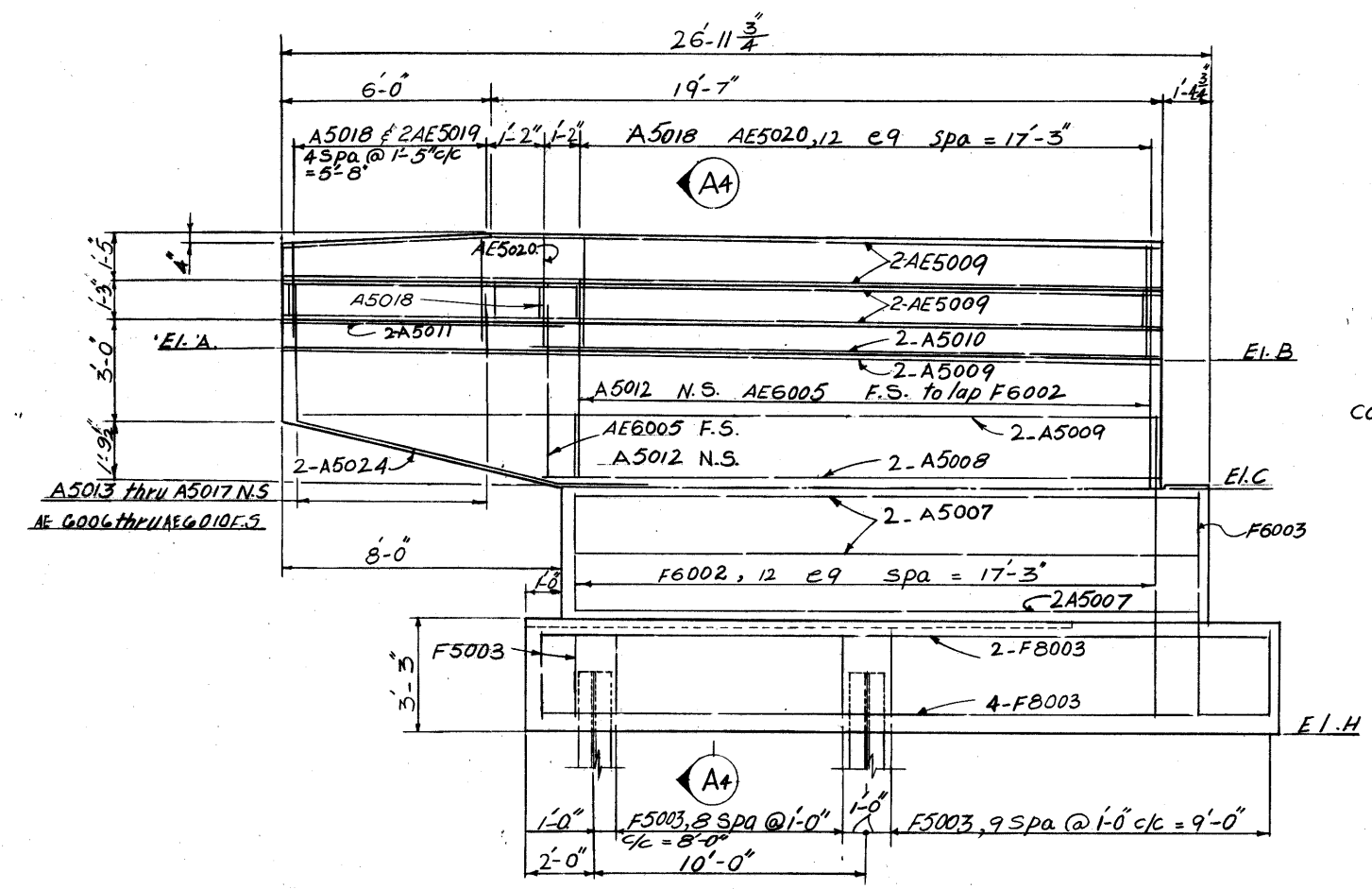
NOTES

- All piles are HP10x42-piles
- I indicates vertical piles
- ⊙ indicates piles battered 1:4
- In reinforcing bar callouts N.S. indicates near side F.S. indicates far side
- Elevations shown thus are pavement elevations at the face of back wall and the point indicated.
- For additional notes see sheet 6/14

ALDEN E. STILSON & ASSOCIATES, LIMITED CONSULTING ENGINEERS CLEVELAND, OHIO COLUMBUS, OHIO WHEELING, W. VA.							
EAST ABUTMENT DETAILS BRIDGE NO LOR. - 80-1910 W. B. I-80 OVER CHESTNUT RIDGE ROAD							
LORAIN COUNTY				STA. 46+04.61 STA. 47+91.53			
DESIGNED	DRAWN	TRACED	CHECKED	REVIEWED	DATE	REVISED	
R.S.S.	M.M.A.		B.I.P.	G.W.M.	5/1/70		

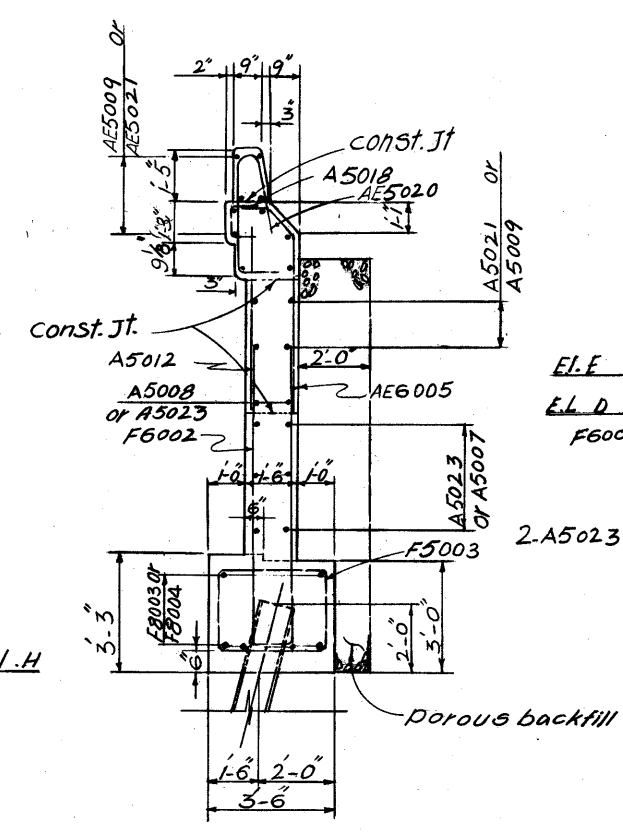
JUL 19 1980

LORAIN COUNTY
LOR.-480-0.00

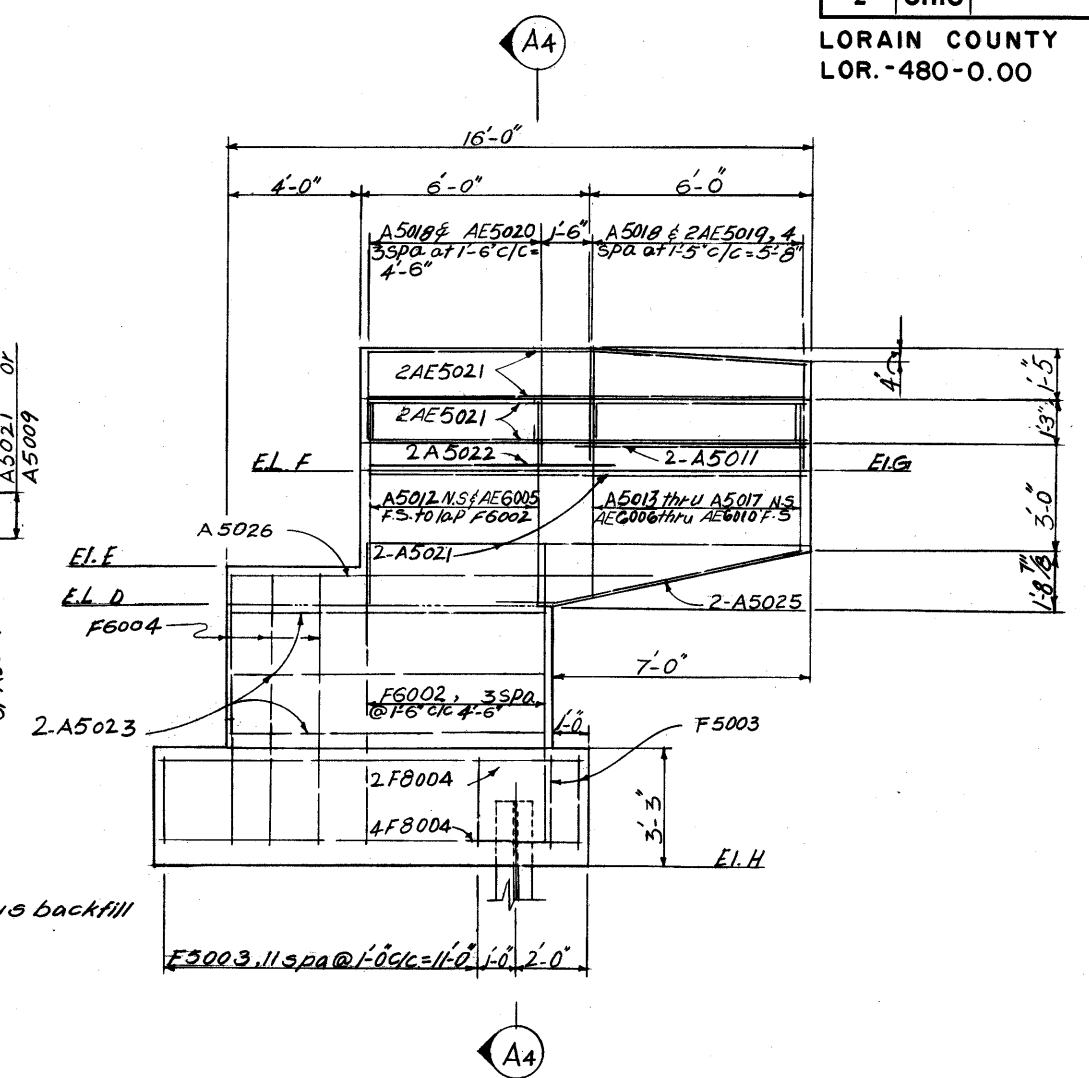


VIEW A2-A2 4/6/14

TABLE OF ELEVATIONS								
Elev.	"A"	"B"	"C"	"D"	"E"	"F"	"G"	"H"
W.Abut.	776.21	776.06	772.17	771.62	772.87	775.51	775.59	764.68
E.Abut.	774.14	774.31	770.45	770.99	771.99	774.86	774.78	763.48



SECTION A4-A4



VIEW A3-A3 5/7/14

NOTES

In reinforcing bar callouts:
N.S. indicates near side
F.S. indicates far side

For additional notes see
Sht No. 6/14

ALDEN E. STILSON & ASSOCIATES, LIMITED
CONSULTING ENGINEERS
CLEVELAND, OHIO COLUMBUS, OHIO WHEELING, W. VA.

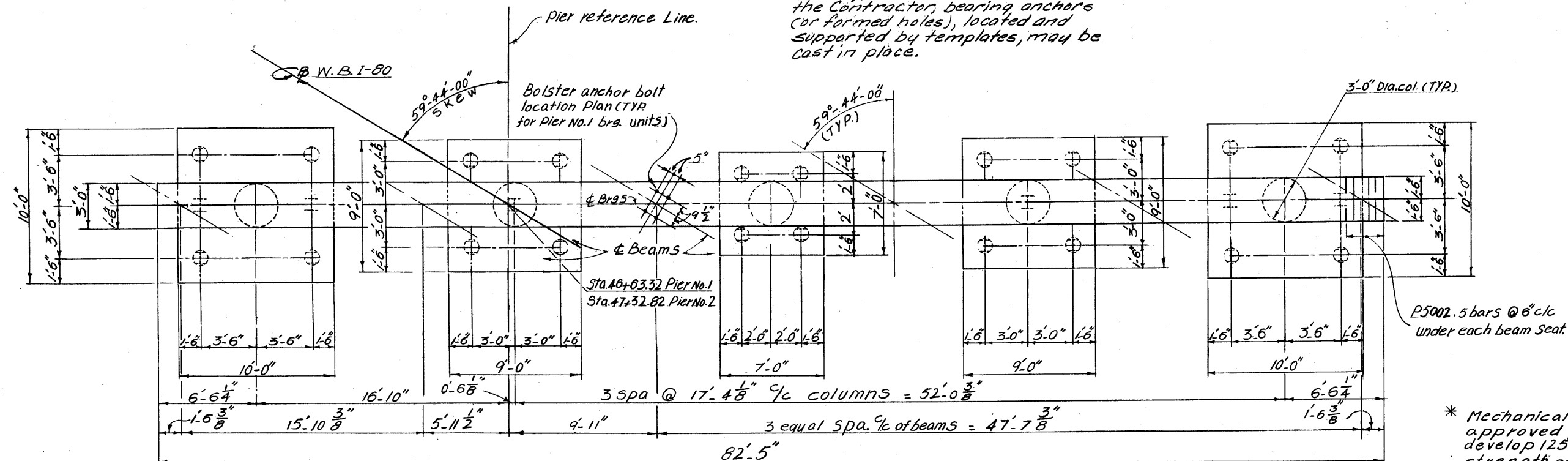
ABUTMENT DETAILS
BRIDGE NO LOR.-80-1910
W.B. 1-80 OVER CHESTNUT RIDGE ROAD

LORAIN COUNTY STA 46+04.61
STA 47+91.53

DESIGNED	DRAWN	TRACED	CHECKED	REVIEWED	DATE	REVISION
R.S.S.	M.M.A.		B.I.P.	G.W.M.	5/11/14	

Note:

Bearing Anchors: At the option of the Contractor, bearing anchors (or formed holes), located and supported by templates, may be cast in place.



PLAN

* Mechanical connectors shall be of an approved positive type, designed to develop 125% of the specified yield strength of the bar.
Cost of the mechanical connectors shall be included with Item 509 for payment.

TABLE OF ELEVATIONS.

Elev.	A	B	C	D	E	F	G
Pier No. 1	770.92	771.14	771.35	771.54	771.50	771.47	767.42
Pier No. 2	770.47	770.68	770.90	771.08	771.07	771.01	766.97

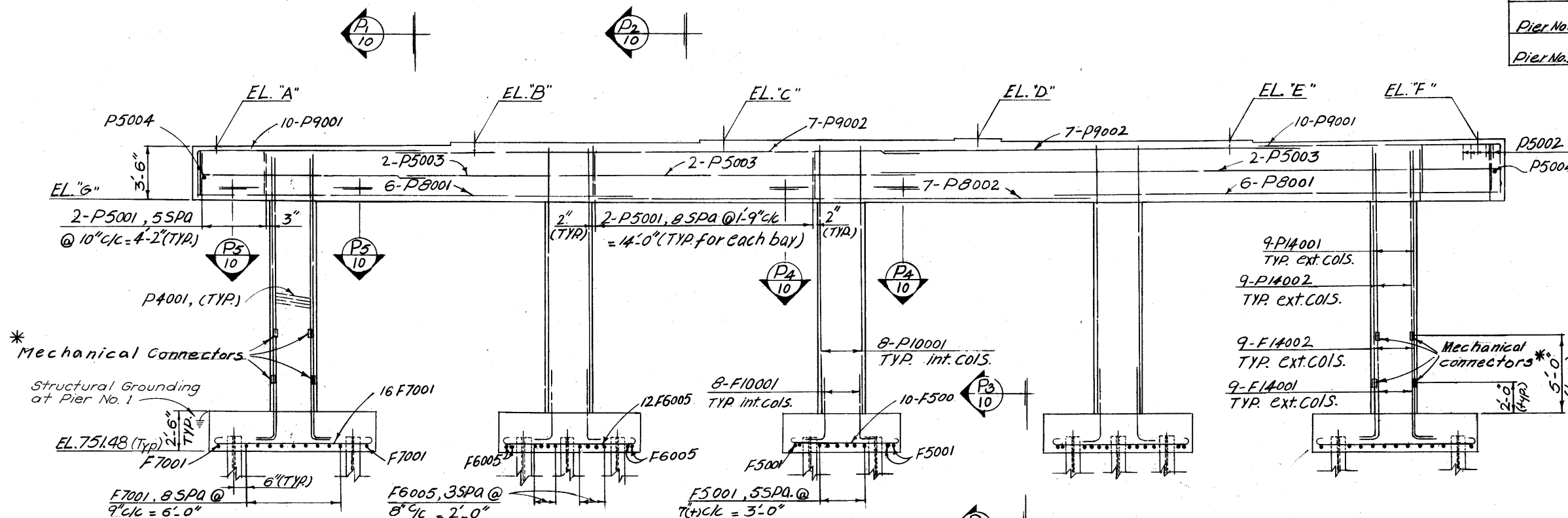
NOTES

All Piles are H P 10x42-Piles.

I indicates vertical piles

⊙ indicates pile battered 1:4

Special care shall be taken at Pier No. 1 in placing reinf. steel in the top of the cap so as to avoid interference with the drilling of anchor bar holes for bearing units or pre-setting of bearing anchors. Alternate F14001 With F14002.

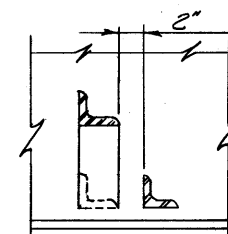


ELEVATION

For Grounding Details at Pier No. 1
See Standard Drawing HL-7.

ALDEN E. STILSON & ASSOCIATES, LIMITED CONSULTING ENGINEERS CLEVELAND, OHIO COLUMBUS, OHIO WHEELING, W. VA.						
PIER DETAILS BRIDGE NO LOR. - 80-1910 W.B. I-80 OVER CHESTNUT RIDGE ROAD						
LORAIN COUNTY			STA. 46+04.61 STA. 47+91.53			
DESIGNED	DRAWN	TRACED	CHECKED	REVIEWED	DATE	REVISED
R.S.S.	M.M.A.		B.I.P.	G.W.M.	3/11/70	

LORAIN COUNTY
LOR. - 480-0.00



SECTION S1-S1

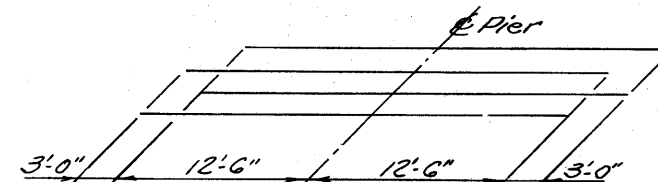


DIAGRAM SHOWING STAGGER
OF SE5003 BARS OVER PIERS

NOTES:

*This is the design dimension. The quantity of deck concrete to be paid for shall be based upon this dimension, even though deviation from it may be necessary because the top flange of the beam may not have the exact camber or conformation required to place it parallel to the finished grade. This dimension is from top of deck slab to top of steel beam.

A haunch width of 9" shall be used for all beams in computing quantity of concrete. However, the haunch width may vary between 6" and 12" provided that the slope shall be not more than 1:4 for a haunch less than 9" in width.

For details of end dam see Sht. 354
Concrete and reinforcing steel for parapets
shall be included for payment with their
respective items. Item 511 Superstructure
Concrete and Item 509 reinforcing steel.

Longitudinal reinforcing steel shall be field cut as necessary to avoid interference with scuppers.

Field bend transverse reinforcing to fit crown. Cost of field bending to be included with Item Item 509.

Steel Erection: During the erection of end dams and crossframes care shall be taken to insure that stringers, bearing ports and bridge seats remain in bearing contact.

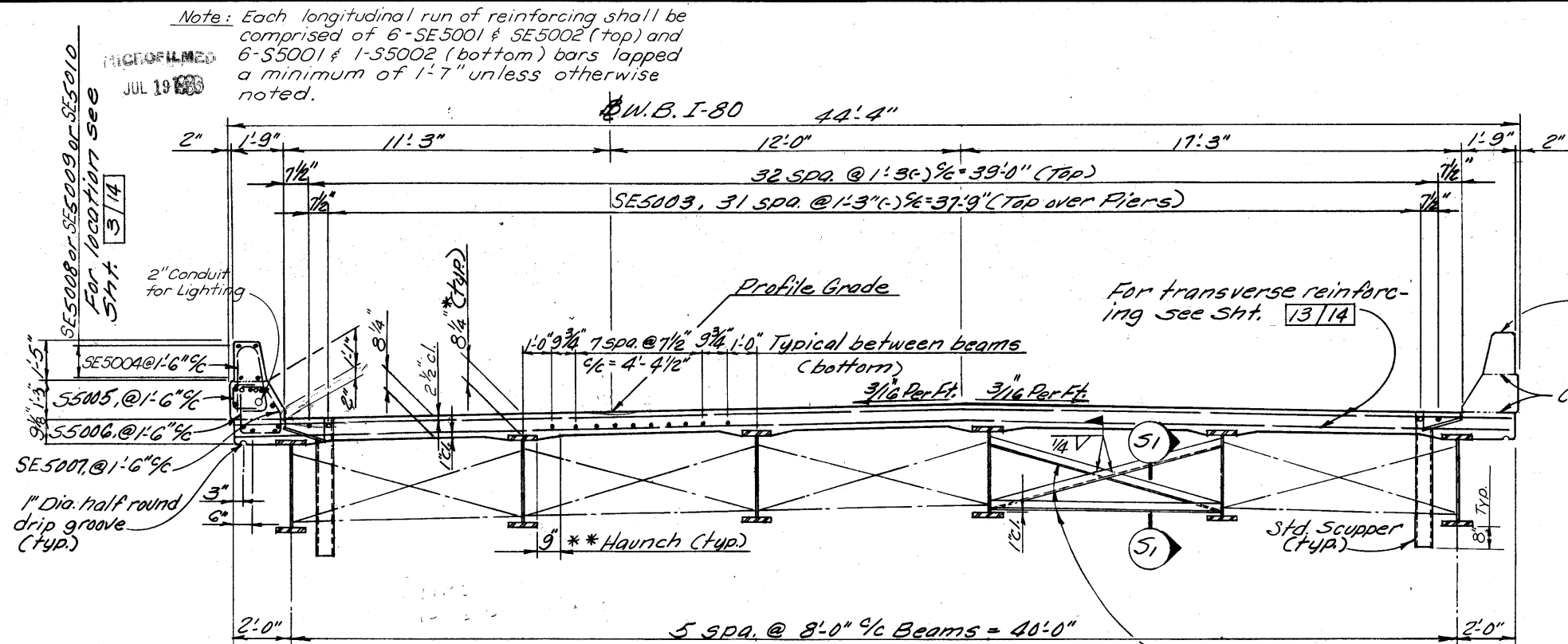
For additional notes see Sht. 12/14

END DAMS AND SCUPPERS: Steel bar stock utilized for end dams and scuppers may be any weldable grade of low or mild carbon steel available commercially. This material is to be excluded from the requirements of 501.07 for test reports.

SHOP DRAWINGS

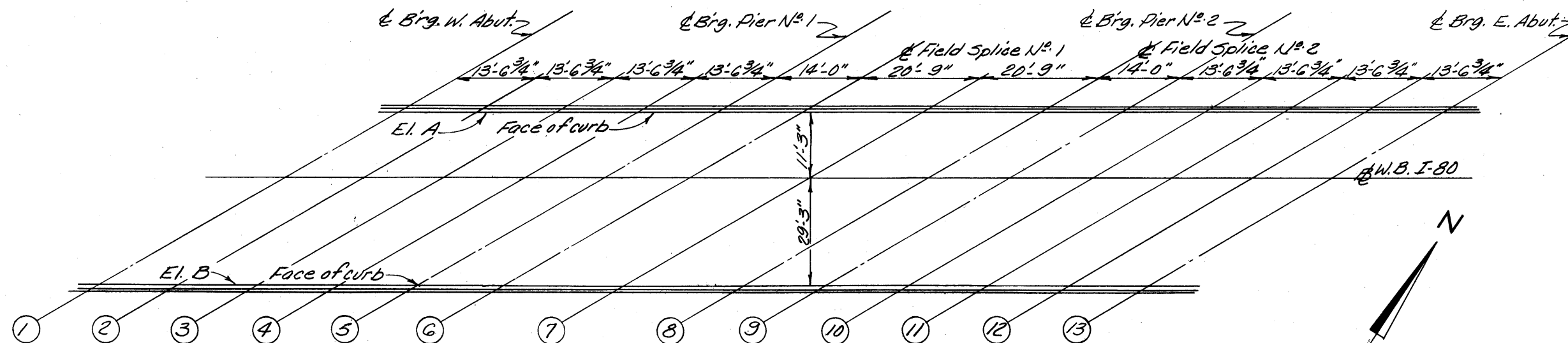
After all steel fabrication is completed, the Fabricator shall furnish a 35 millimeter microfilm copy of each shop drawing mounted on a 3 1/4" x 7 3/8" aperture card. The card shall be imprinted with the bridge and project number, Fabricator's name, drawing number and details shown on the drawing (girders, beams, crossframes, etc.)

ALDEN E. STILSON & ASSOCIATES, LIMITED CONSULTING ENGINEERS CLEVELAND, OHIO COLUMBUS, OHIO WHEELING, W. VA.					
SUPERSTRUCTURE DETAILS BRIDGE NO. LOR. - 80-1910 W. B. I-80 OVER CHESTNUT RIDGE ROAD					
LORAIN COUNTY					
STA. 46+04.61 STA. 47+91.53					
DESIGNED	DRAWN	TRACED	CHECKED	REVIEWED	DATE
R.S.S.	R.T.		B.I.P.	G.W.M.	5/1/70



TRANSVERSE SECTION

- Intermediate crossframes
Ls 3x3x5/16. Weld both
sides of vertical leg and
top side of horiz. leg to beam
with 1/4" continuous fillet weld.



DECK ELEVATION LOCATIONS

The deck elevations shown are those which are required prior to placing of the concrete deck. Proper allowance has been made for the dead load deflection caused by the weight of the concrete.

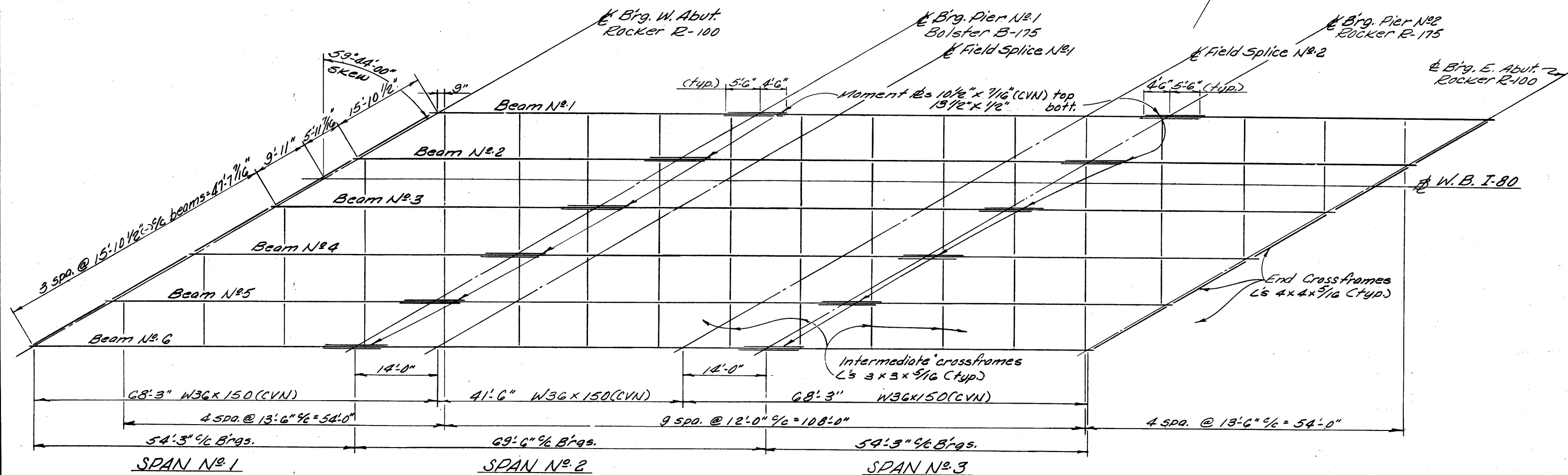
Line	1	2	3	4	5	6	7	8	9	10	11	12	13
Elev. A	776.26	776.19	775.10	776.00	775.90	775.82	775.71	775.55	775.45	775.37	775.29	775.20	775.03
Elev. B	776.82	776.58	776.66	776.56	776.46	776.38	776.26	776.10	776.00	775.92	775.84	775.75	775.64

RECORDED
JUL 19 1980

FED. RD. DIVISION	STATE	PROJECT	TYPE FUNDS
2	OHIO		

LORAIN COUNTY
LOR. - 480-0.00

301
375



FRAMING PLAN

Where "(CVN)" follows a shape or plate size designation, the material shall meet specified notch toughness requirements.

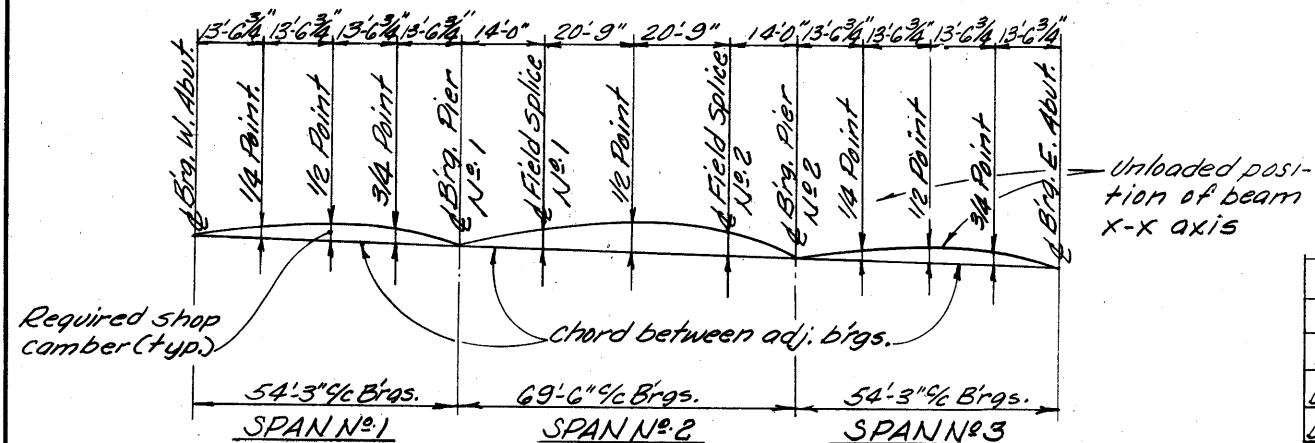
NOTES:

Crossframes may be shifted as necessary to avoid field splices.

Place intermediate crossframes normal to beam.

For details of field splice see Std. Drwg. S.D.-1-69 Sht. No. 4.

For moment plate details see Std. Drwg. S.D.-1-69 Sht. No. 3.



CAMBER & BLOCKING DIAGRAM

Note: All blocking dimensions are 0'-0"

DEFLECTION AND CAMBER

	SPAN NO. 1			SPAN NO. 2			SPAN NO. 3		
Location	1/4 Pt.	1/2 Pt.	3/4 Pt.	Sp. Pt.	1/2 Pt.	Sp. Pt.	1/4 Pt.	1/2 Pt.	3/4 Pt.
Deflection due to weight of steel	1/16	1/16	1/16	1/16	1/16	1/16	1/16	1/16	1/16
Deflection due to remaining dead load	3/16	1/4	1/8	1/8	5/16	1/8	1/8	1/4	3/16
Adjustment required for vert. curve	0	0	0	0	0	0	0	0	0
Required Shop Camber	1/4	5/16	3/16	3/16	3/8	3/16	3/16	5/16	1/4

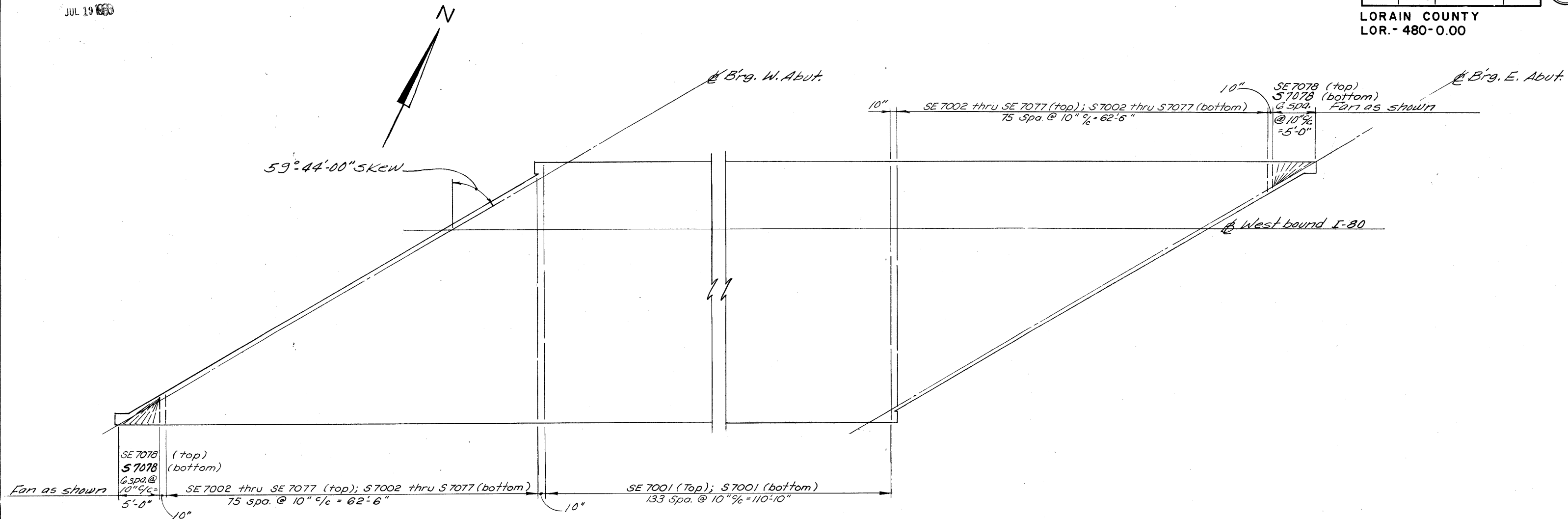
ALDEN E. STILSON & ASSOCIATES, LIMITED CONSULTING ENGINEERS CLEVELAND, OHIO COLUMBUS, OHIO WHEELING, W. VA.						
SUPERSTRUCTURE DETAILS BRIDGE NO. LOR. - 80-1910 W.B. I-80 OVER CHESTNUT RIDGE ROAD LORAIN COUNTY						
DESIGNED			DRAWN		TRACED	
R.S.S.			D.T.		B.I.P.	
CHECKED			REVIEWED		DATE	
G.W.M.			5/11/70		REVISED	

RECEIVED
JUL 19 1960

FED. RD. DIVISION	STATE	PROJECT	TYPE FUNDS
2	OHIO		

LORAIN COUNTY
LOR.- 480-0.00

302
375



TRANSVERSE SLAB REINFORCING

Note: Transverse reinforcing steel shall be placed normal to ϕ of West bound I-80 except at acute corners of slab.

ALDEN E. STILSON & ASSOCIATES, LIMITED CONSULTING ENGINEERS CLEVELAND, OHIO COLUMBUS, OHIO WHEELING, W. VA.						
SUPERSTRUCTURE DETAILS						
BRIDGE NO. LOR.- 80-1910						
W. B. I-80 OVER CHESTNUT RIDGE ROAD						
LORAIN COUNTY						
STA. 46+04.61 STA. 47+91.53						
DESIGNED	DRAWN	TRACED	CHECKED	REVIEWED	DATE	REVISED
R.S.S.	R.T.		B.I.P.	G.W.M.	5/11/70	