

LAW-SR 217-2.53 Utility Note

PID 123944

May 8, 2025

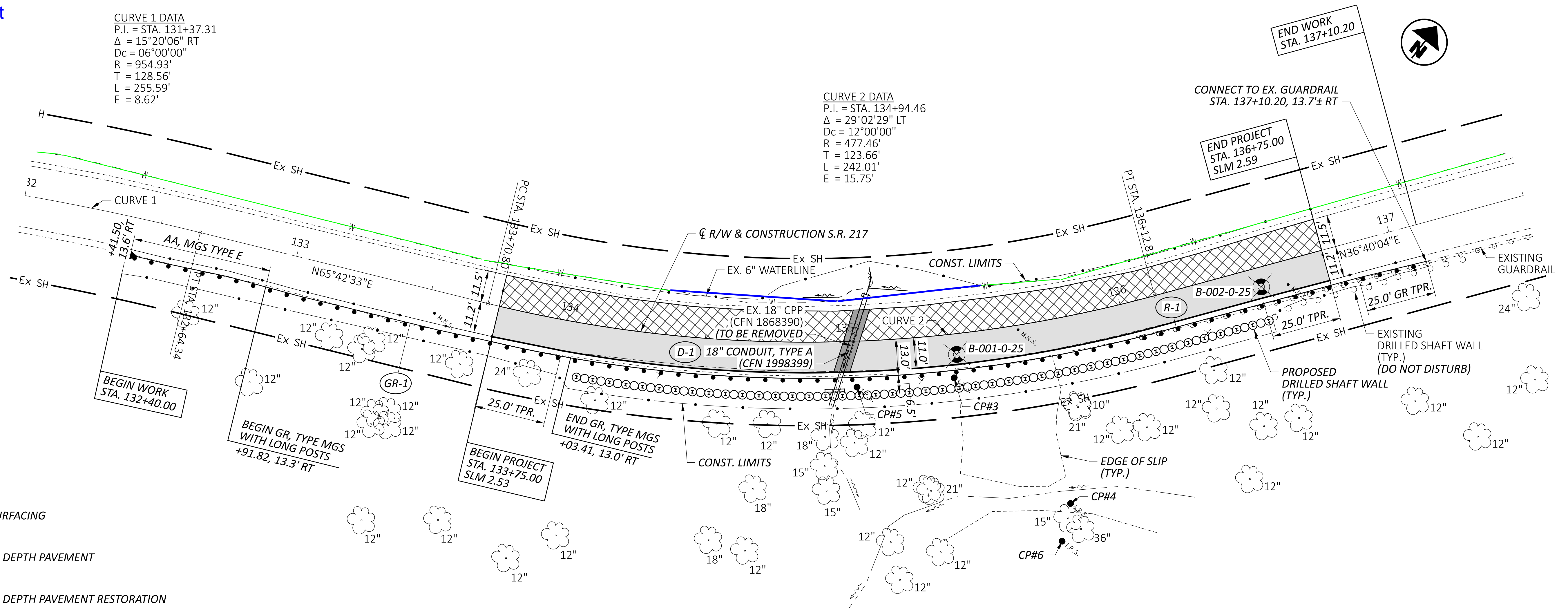
Hecla Water Association, INC




Hecla Water Association has existing facilities within the construction limits, as indicated in the plan. The current main line runs along the northwest side of SR 217. Hecla Water will relocate their 6-inch waterline to a depth of 5 feet below grade to be under the culvert to avoid any conflicts with the proposed work.

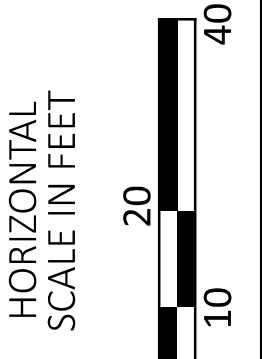
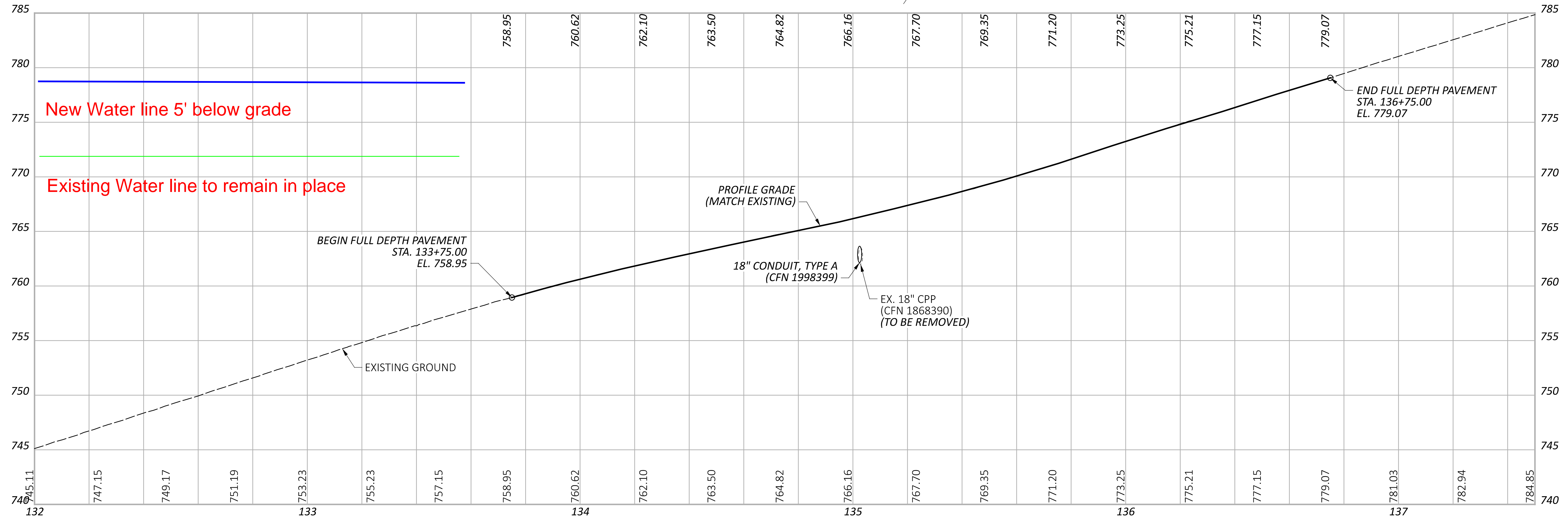
This work will be completed on or before August 1, 2025. The contact person is Joe Unger at 740-533-0526 Ext. 5.

CURVE 1 DATA
 P.I. = STA. 131+37.31
 $\Delta = 15^{\circ}20'06''$ RT
 $D_c = 06^{\circ}00'00''$
 $R = 954.93'$
 $T = 128.56'$
 $L = 255.59'$
 $E = 8.62'$

CURVE 2 DATA
 P.I. = STA. 134+94.46
 $\Delta = 29^{\circ}02'29''$ LT
 $D_c = 12^{\circ}00'00''$
 $R = 477.46'$
 $T = 123.66'$
 $L = 242.01'$
 $E = 15.75'$



-  RESURFACING
-  FULL DEPTH PAVEMENT
-  FULL DEPTH PAVEMENT RESTORATION



PLAN AND PROFILE
 STA. 132+00.00 TO STA. 137+50.00