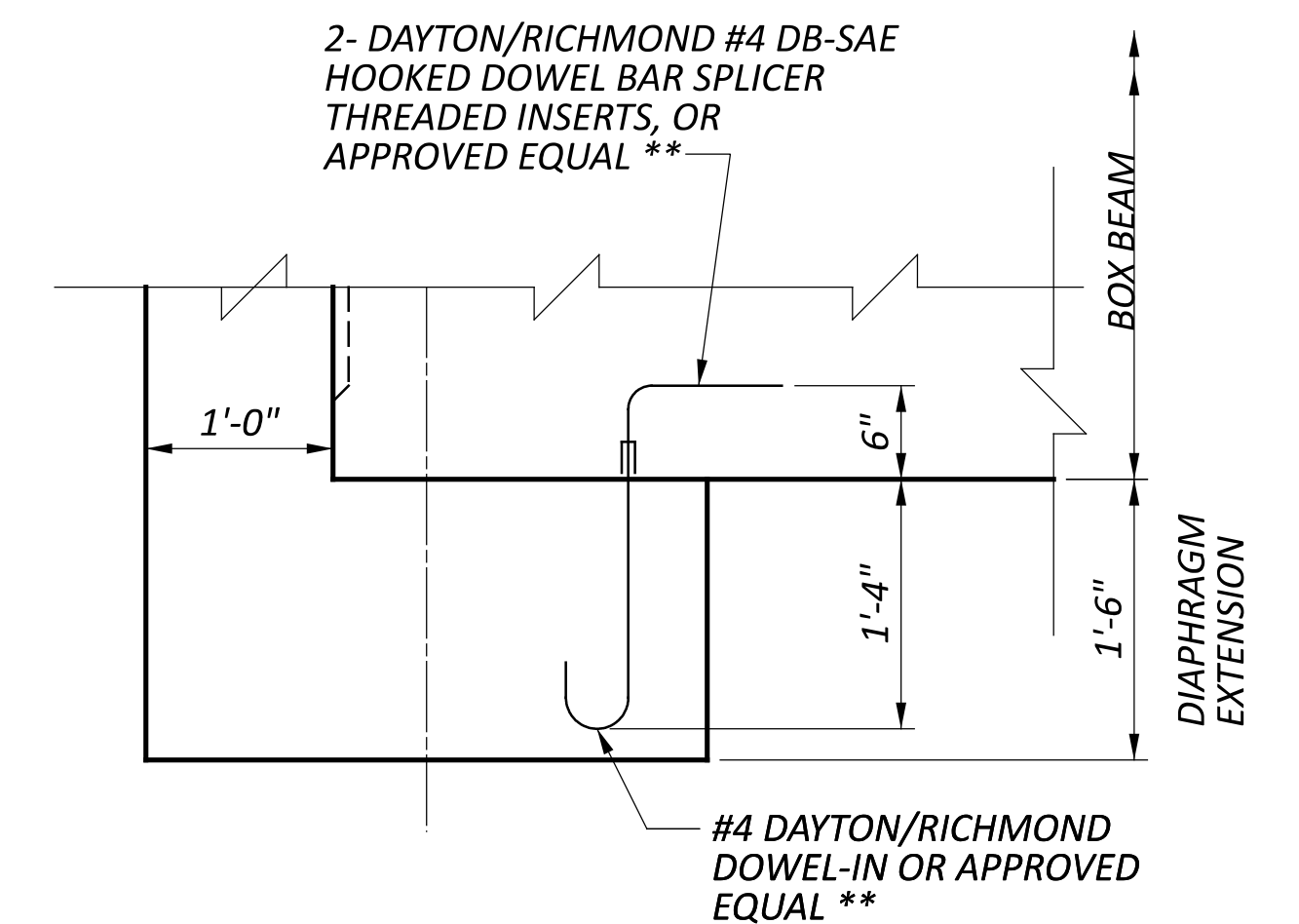
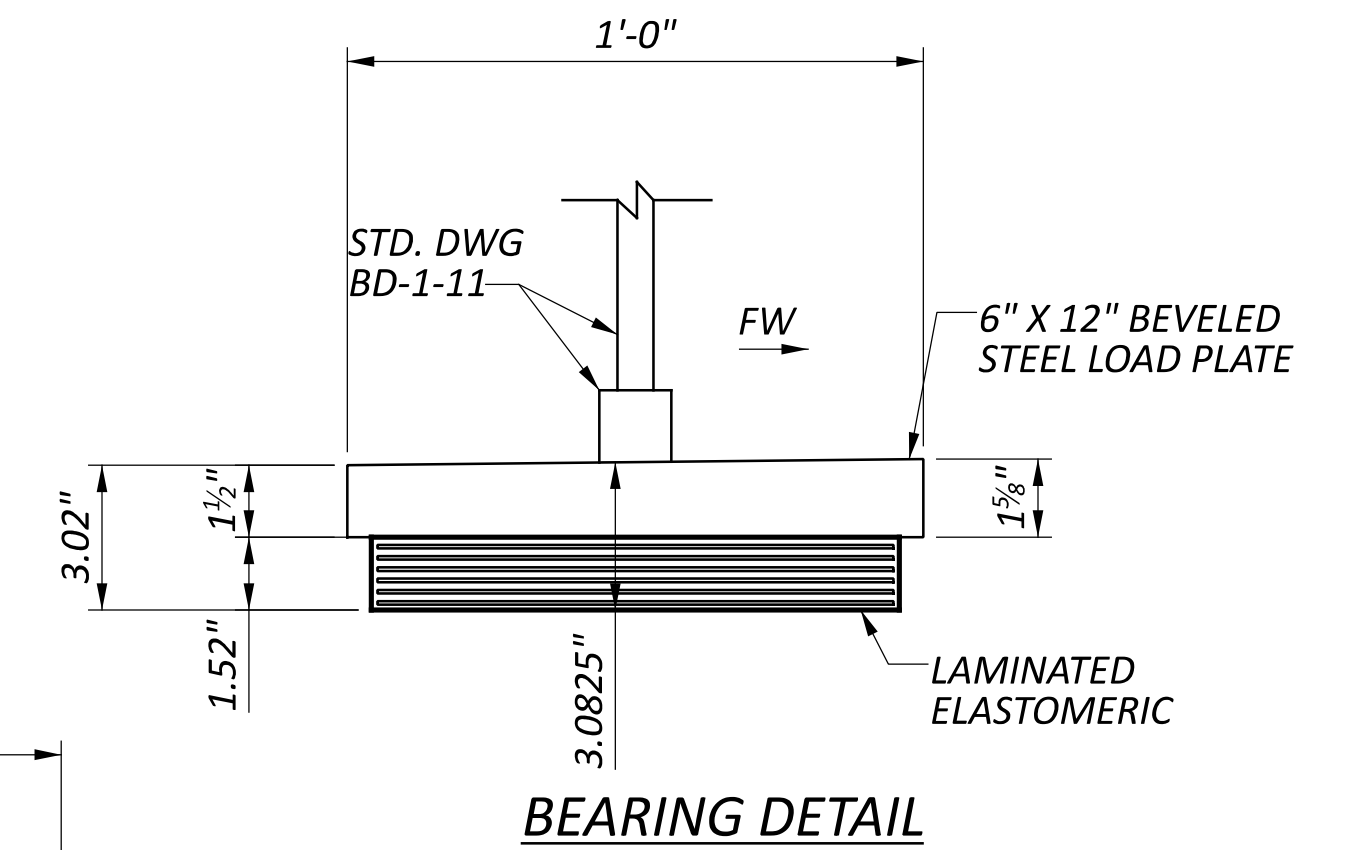


**LAMINATED ELASTOMERIC**  
**BEARING DETAIL (1.520"x11"x5")**

<b>DEAD LOAD</b>	<b>= 22.60 K</b>
<b>LIVE LOAD</b>	<b>= 15.30 K</b>
<b>MAXIMUM DESIGN LOAD</b>	<b>= 37.90 K</b>



DOWEL BAR SPLICER DETAIL

LEGEND

\* DOWEL BAR SPLICERS ARE LOCATED ON THE OUTSIDE OF FASCIA BEAMS ONLY

**\*\* INCLUDED WITH ITEM 515 - PRESTRESSED CONCRETE BOX BEAM  
BRIDGE MEMBERS, LEVEL I, CB21-48 (63'-0" LENGTH), AS PER PLAN  
FOR PAYMENT.**

NOTES

**ELASTOMERIC BEARINGS:** THE ELASTOMER SHALL HAVE A HARDNESS OF 50 DUROMETER. THE BEARINGS WERE DESIGNED IN ACCORDANCE WITH SECTION 14.7.6 (METHOD A) OF THE AASHTO LRFD BRIDGE DESIGN SPECIFICATIONS. THE LONG TERM COMPRESSION PROOF LOAD TEST (AASHTO STANDARD SPECIFICATIONS FOR HIGHWAY BRIDGES, DIVISION II, SECTION 18.7.2.6) IS NOT REQUIRED.

**ELASTOMERIC BEARINGS MARKING:** ALL BEARINGS SHALL BE MARKED PRIOR TO SHIPPING. THE MARKS SHALL INCLUDE THE BEARING LOCATION ON THE BRIDGE, AND A DIRECTION ARROW THAT POINTS UP-STATION. ALL MARKS SHALL BE PERMANENT AND BE VISIBLE AFTER THE BEARING IS INSTALLED.

**FRAMING PLAN:** SEE SHEET 7 OF 13.

**CAMBER DIAGRAM:** SEE SHEET 11 OF 13.

**BEARING PLACEMENT DETAIL:** SEE SHEET 7 OF 13.

**ADDITIONAL NOTES & DETAILS:** SEE STANDARD DRAWING PSBD-02-07.

# BOX BEAM DETAILS BRIDGE NO. NOB-MILL-0007 OVER BUFFALO CREEK

6163010  
DESIGN AGENCY



DESIGNER	CHECKER
BLN	dht

REVIEWER	
DLR 11-06-24	

PROJECT ID
119960

SUBSET	TOTAL
8	13

HEET	TOTAL
P.34	44