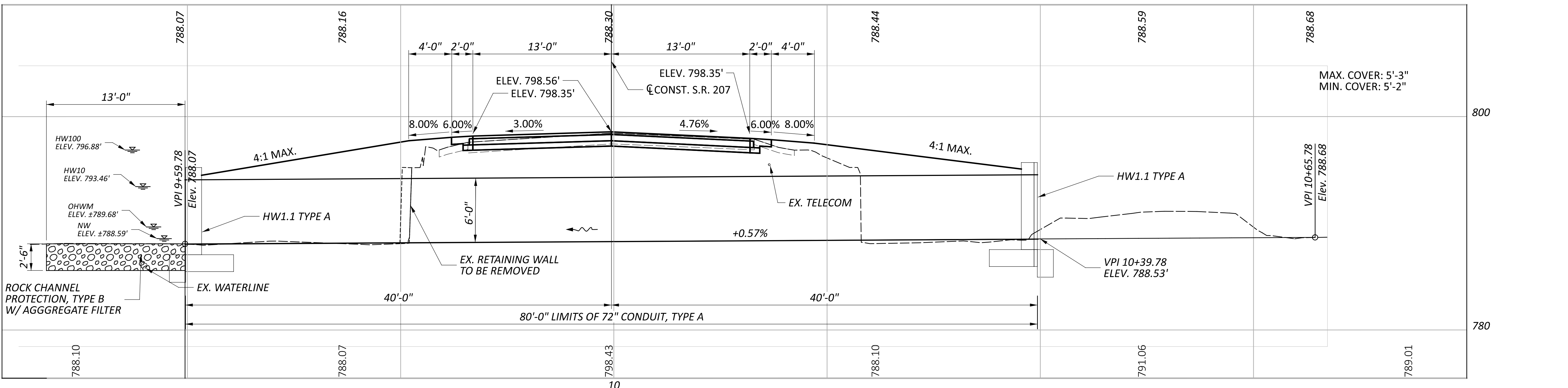


EXISTING STRUCTURE	
TYPE:	3 SIDED BOX WITH A STONE INTERIOR AND CONCRETE WALL AND TOP SLAB EXTENSIONS AT EACH END.
SIZE:	5' SPAN x 6' RISE x 42' LONG
SKEW:	NONE
ALIGNMENT:	TANGENT
DATE BUILT:	01/02/1932
CONDITION:	POOR
CFN:	1844550

PROPOSED STRUCTURE	
TYPE:	72" DIAMETER CONDUIT, TYPE A, 80'-0" LENGTH.
ALLOWABLE MATERIALS:	706.02, 707.01 METALIC COATED (ALUMINIZED) WITH CONCRETE FIELD PAVING, 707.35, OR 707.85
SKEW:	NONE
ALIGNMENT:	TANGENT
CFN:	1995869

HYDRAULIC DATA	
DRAINAGE AREA =	204.80 ACRES
Q (10) =	133 CFS
Q (100) =	284 CFS
ORDINARY HIGH WATER MARK:	789.68 FT
DESIGN SERVICE LIFE:	75 YEARS
ABRASION LEVEL:	4
pH:	7.5

ESTIMATED QUANTITIES			
ITEM	QUANTITY	UNIT	DESCRIPTION
202	LS		STRUCTURE REMOVED
503	LS		COFFERDAMS AND EXCAVATION BRACING
503	LS		UNCLASSIFIED EXCAVATION
518	10	CY	POROUS BACKFILL WITH GEOTEXTILE FABRIC
601	30	CY	RCP, TYPE B W/ AGGREGATE FILTER
602	35	CY	CONCRETE MASONRY
611	80	FT	72" CONDUIT, TYPE A, SEE P.18 FOR ALLOWABLE MATERIALS



CULVERT DETAIL SHEET  
 CULVERT ROS-207-8.31

DESIGN AGENCY	[Logo]
DESIGNER	BRVM
REVIEWER	JAZ
PROJECT ID	120336
SUBSET	1
TOTAL	1
SHEET	P.18
TOTAL	23