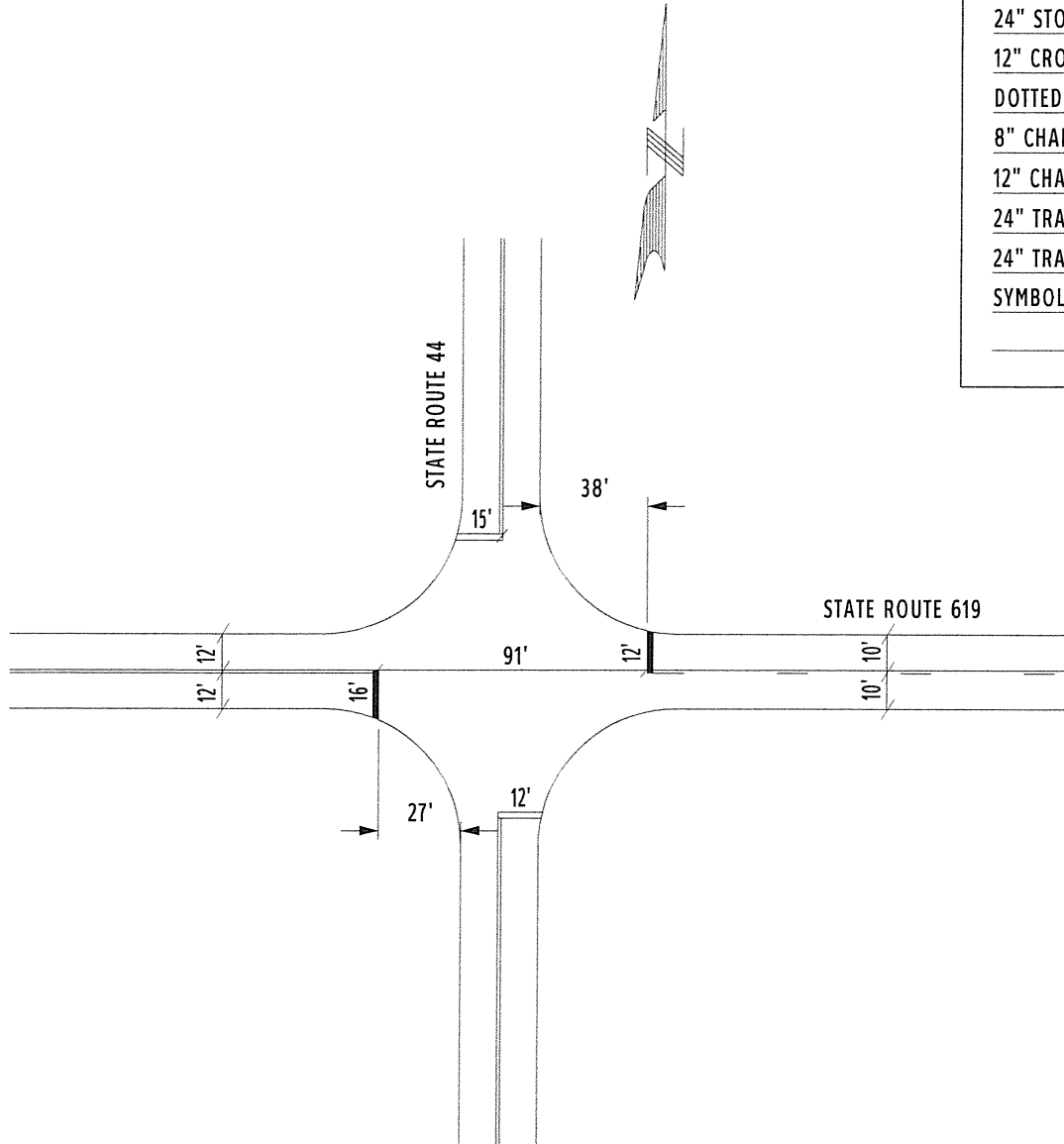


COUNTY:	STARK	
LOCATION:	STATE ROUTE 619 @ MOGADORE AVE.	
S.L.M.:	1.255	
24" STOP LINE:	24	L.F.
12" CROSSWALK LINE:		L.F.
DOTTED LINE:		L.F.
8" CHANNELIZING LINE:		L.F.
12" CHANNELIZING LINE:		L.F.
24" TRANSVERSE LINE (WT):		L.F.
24" TRANSVERSE LINE (YW):		L.F.
SYMBOL:		

COUNTY:	STARK	
LOCATION:	S.R. 619 @ S.R. 44	
S.L.M.:	8.978	
24" STOP LINE:	28	L.F.
12" CROSSWALK LINE:		L.F.
DOTTED LINE:		L.F.
8" CHANNELIZING LINE:		L.F.
12" CHANNELIZING LINE:		L.F.
24" TRANSVERSE LINE (WT):		L.F.
24" TRANSVERSE LINE (YW):		L.F.
SYMBOL:		

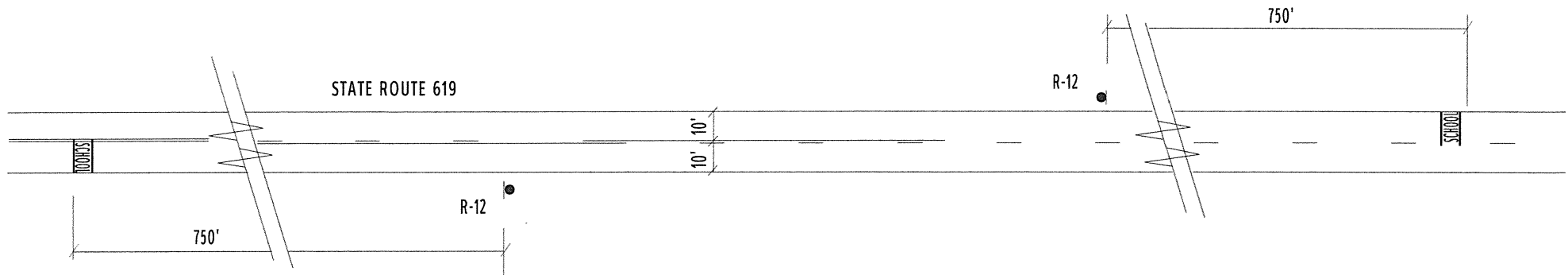


COUNTY:	STARK
LOCATION:	S.R. 619 @ MARLBORO ELEM
S.L.M.:	9.500
24" STOP LINE:	L.F.
12" CROSSWALK LINE:	L.F.
DOTTED LINE:	L.F.
8" CHANNELIZING LINE:	L.F.
12" CHANNELIZING LINE:	L.F.
24" TRANSVERSE LINE (WT):	L.F.
24" TRANSVERSE LINE (YW):	L.F.
SYMBOL: 2 - SCHOOL SYMBOLS	

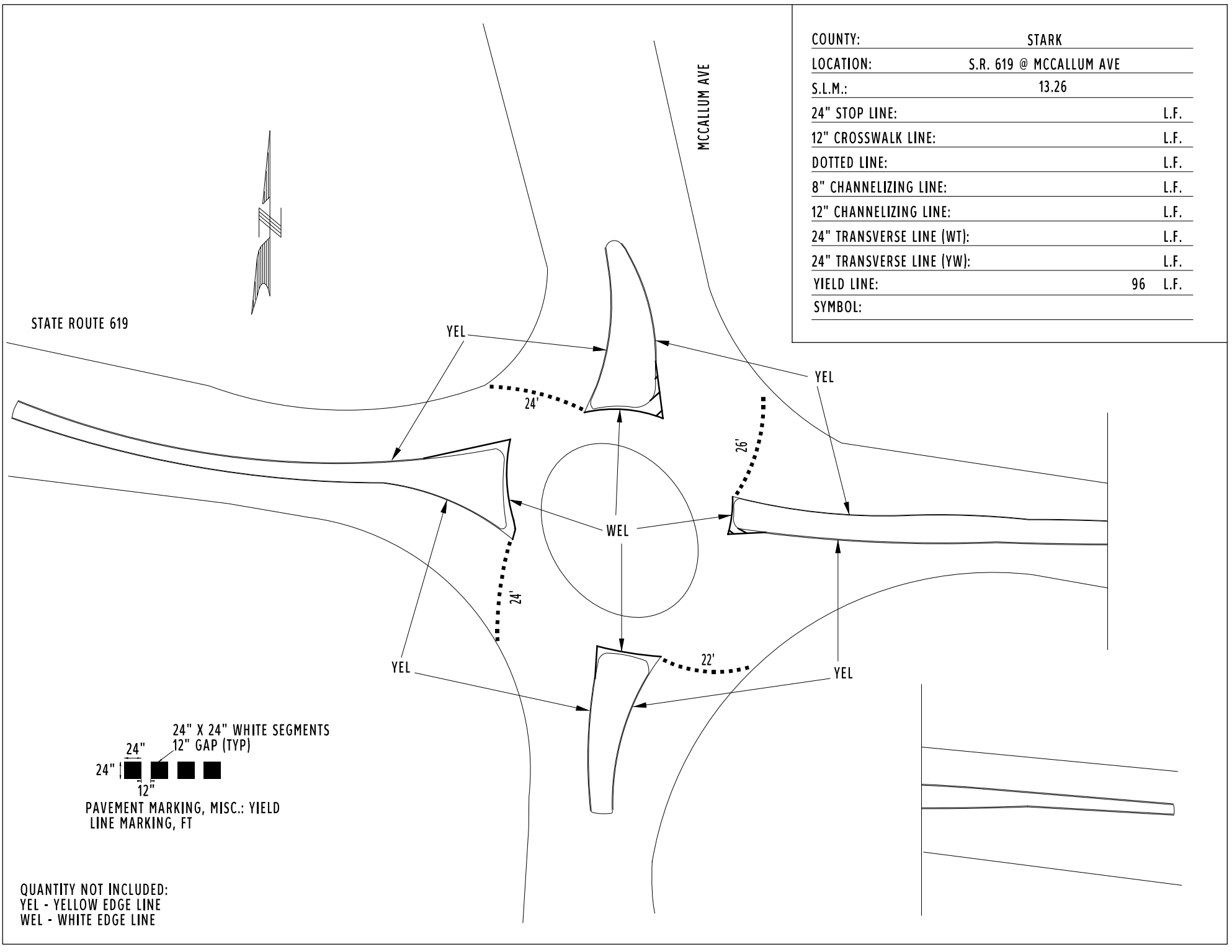


**CLOSED MARCH 2019**

MARLBORO  
ELEMENTARY SCHOOL



COUNTY:	STARK
LOCATION:	S.R. 619 @ MCCALLUM AVE
S.L.M.:	13.26
24" STOP LINE:	L.F.
12" CROSSWALK LINE:	L.F.
DOTTED LINE:	L.F.
8" CHANNELIZING LINE:	L.F.
12" CHANNELIZING LINE:	L.F.
24" TRANSVERSE LINE (WT):	L.F.
24" TRANSVERSE LINE (YW):	L.F.
YIELD LINE:	96 L.F.
SYMBOL:	



STATE ROUTE 619

MCCALLUM AVE

YEL

24'

YEL

26'

WEL

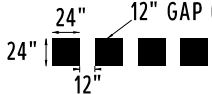
24'

YEL

22'

YEL

24" X 24" WHITE SEGMENTS  
12" GAP (TYP)



PAVEMENT MARKING, MISC.: YIELD  
LINE MARKING, FT

QUANTITY NOT INCLUDED:  
YEL - YELLOW EDGE LINE  
WEL - WHITE EDGE LINE

COUNTY:	STARK	
LOCATION:	S.R. 619 @ S.R. 183	
S.L.M.:	16.387	
24" STOP LINE:	13	L.F.
12" CROSSWALK LINE:		L.F.
DOTTED LINE:		L.F.
8" CHANNELIZING LINE:		L.F.
12" CHANNELIZING LINE:		L.F.
24" TRANSVERSE LINE (WT):		L.F.
24" TRANSVERSE LINE (YW):		L.F.
SYMBOL:		

