







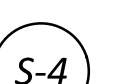
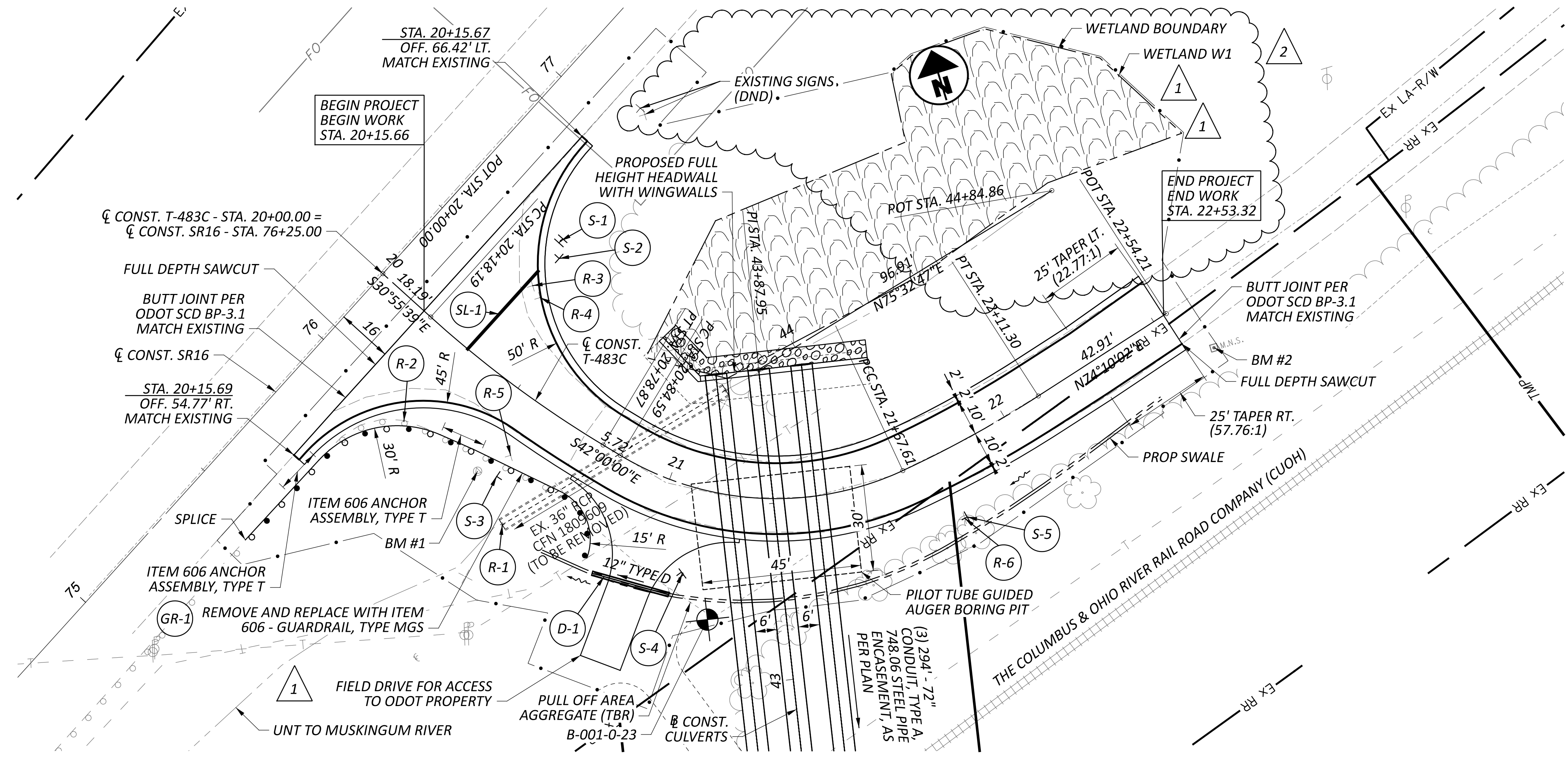
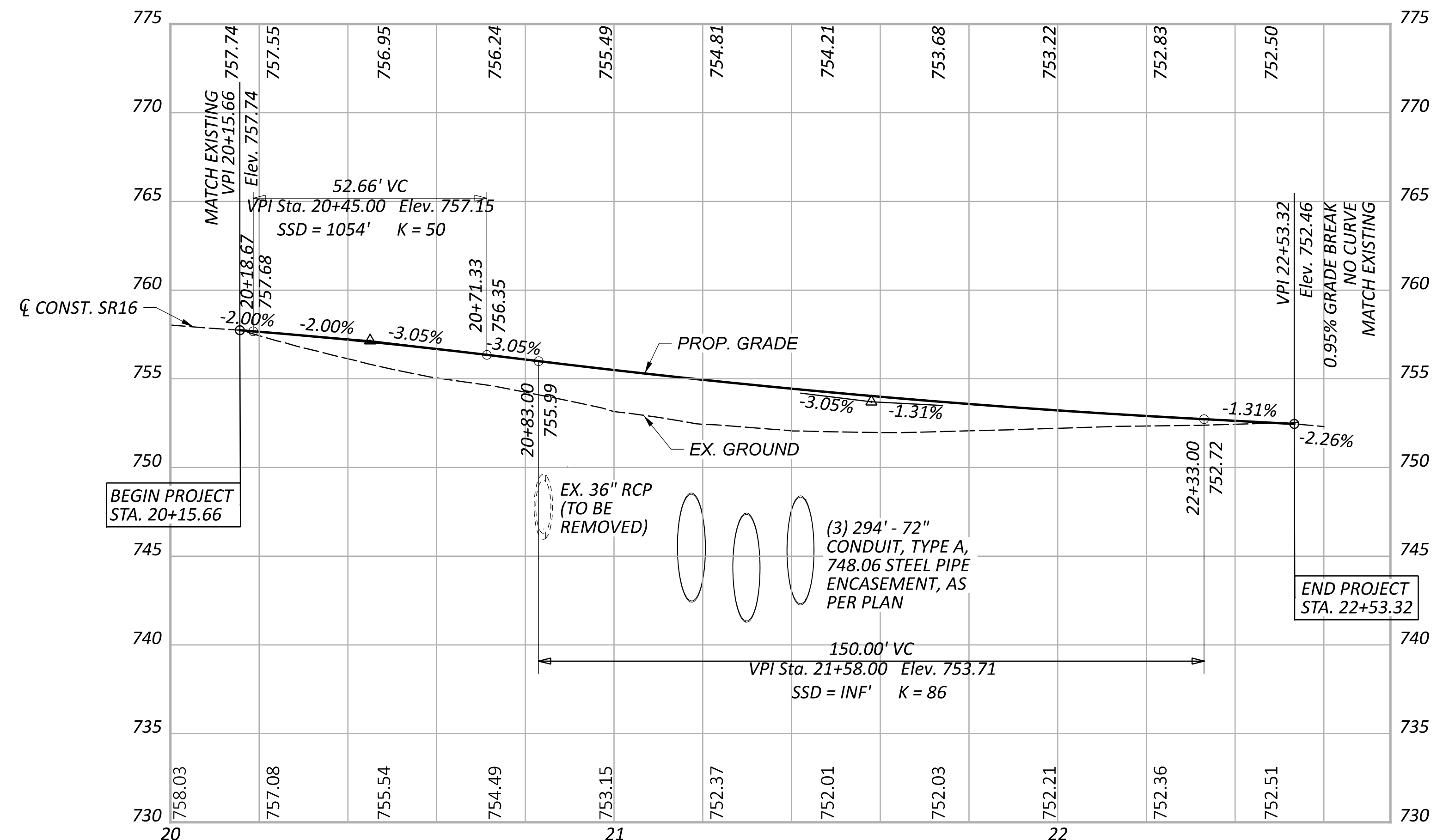
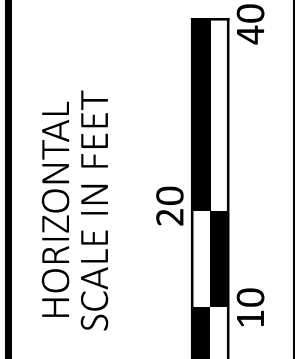




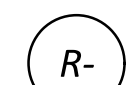

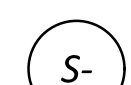


-  ~~VIRGINIA TOWNSHIP TWP RD 483~~
STA. 20+34.97, 25.43' LT.
-  ~~STOP~~
STA. 20+39.05, 24.12' LT.
-  ~~VIRGINIA TOWNSHIP 483C~~
STA. 20+59.05, 16.62' RT.
-  ~~STOP~~
STA. 21+77.21, 19.70' RT.
-  VIRGINIA TOWNSHIP TWP RD 483
D3-H6b-48
STA. 20+32.89, 40.26' LT.
-  STOP
R1-1-30
STA. 20+36.06, 36.10' LT.
-  VIRGINIA TOWNSHIP 483C
M1-H6b-18
STA. 20+59.20, 23.74' RT.
-  W1-8R-18
STA. 21+77.93, 19.65' RT.
-  W1-6R-48
STA. 21+09.96, 24.34' RT.



NOTES:

- FOR SUBSUMMARY, SEE SHEET P.10
- FOR ESTIMATED QUANTITIES, SEE SHEET P.11
- FOR T-483C CROSS SECTIONS, SEE SHEETS P.13-P.16.
- FOR CULVERT DETAILS, SEE SHEET P.19.
- FOR INLET/OUTLET GRADING DETAILS, SEE SHEET P.25.
- FOR INTERSECTION DETAILS, SEE SHEET P.17.



- LEGEND:**
-  DRAINAGE ITEM
 -  GUARDRAIL ITEM
 -  REMOVAL ITEM
 -  STOP LINE
 -  SIGN
 -  CONSTRUCTION LIMITS
 -  WETLAND AREA HATCH

| REV. | DESCRIPTION | DATE |
|------|-------------|------------|
| 2 | ADDENDUM | 04/20/2026 |
| 1 | ADDENDUM | 04/13/2026 |

PLAN AND PROFILE - T-483C
BEGINNING TO ENDING

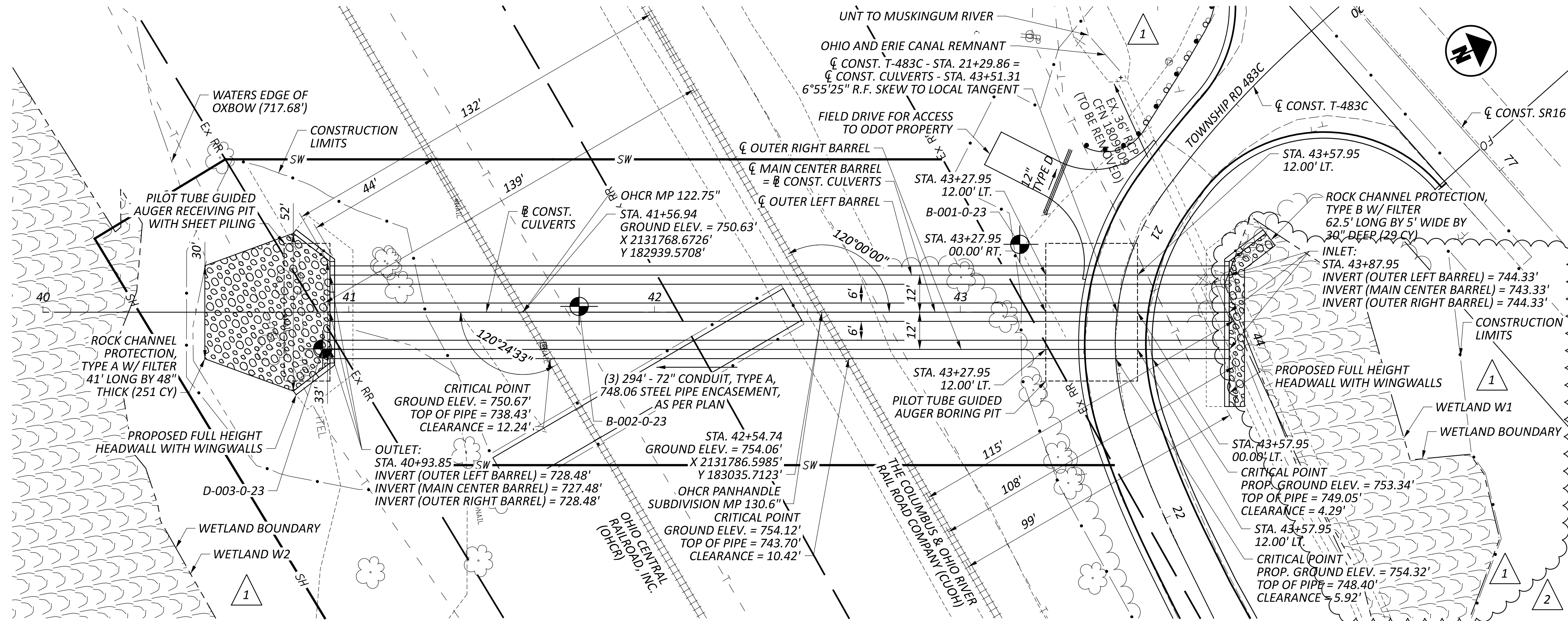
DESIGN AGENCY
AECOM

DESIGNER
HKP

REVIEWER
AM 11-26-25

PROJECT ID
119871

SHEET TOTAL
P.12 31



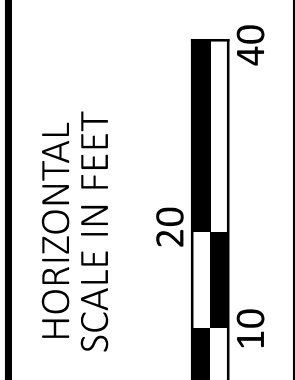
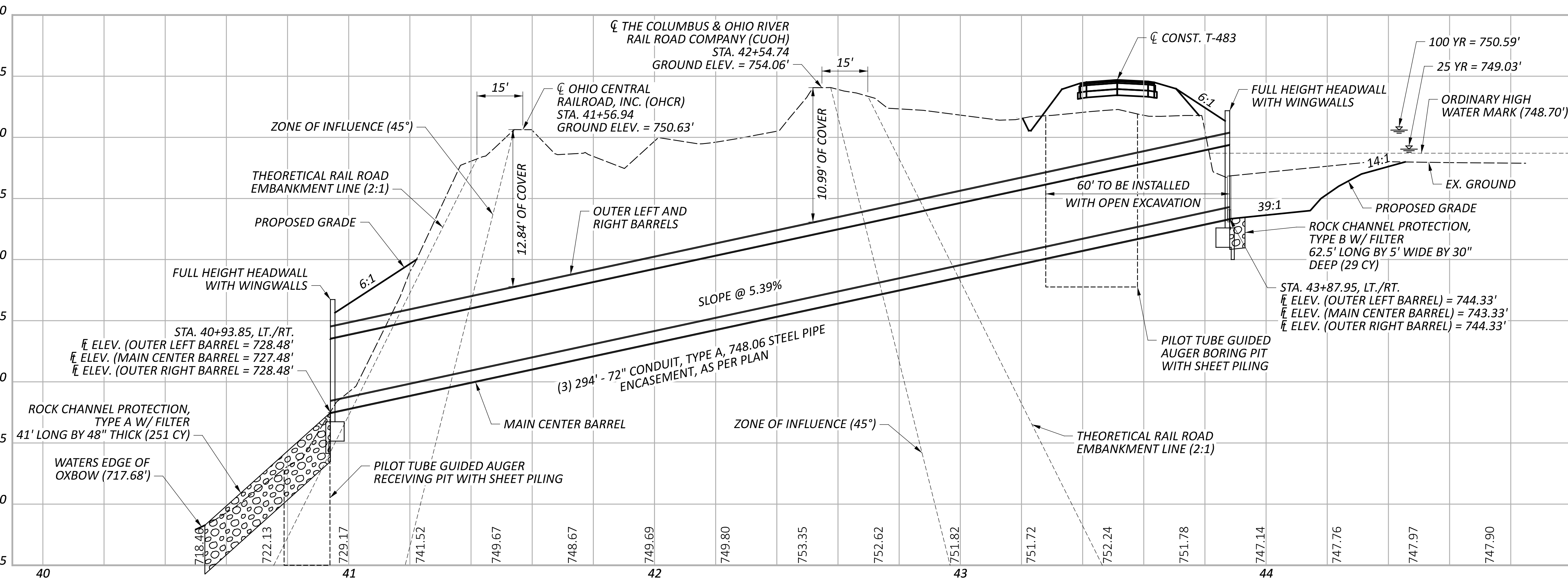
| ESTIMATED QUANTITIES | | | |
|----------------------|----------|------|---|
| ITEM | QUANTITY | UNIT | DESCRIPTION |
| 601 | 251 | CY | ROCK CHANNEL PROTECTION, TYPE A WITH FILTER |
| 601 | 29 | CY | ROCK CHANNEL PROTECTION, TYPE B WITH FILTER |
| 611 | 180 | FT | 72" CONDUIT, TYPE A, AS PER PLAN, 748.06 |
| 611 | 702 | FT | PILOT TUBE GUIDED AUGER BORING, 72", TYPE A, 748.06 |

HYDRAULIC DATA
 DRAINAGE AREA = 1,070.73 ACRES
 Q (25) = 673.35 CFS V(25) = 12.39 FPS
 Q (100) = 1,011.41 CFS V(100) = 15.62 FPS
 ORDINARY HIGH WATER MARK: 748.70
 DESIGN SERVICE LIFE: 75 YEARS
 pH: 7.3
 ABRASION LEVEL: LEVEL 2

EXISTING STRUCTURE
 TYPE: 36" REINFORCED CONCRETE PIPE
 SKEW: 28° L.F.
 ALIGNMENT: CURVE
 CFN: 1809609

PROPOSED STRUCTURE
 TYPE: 72" CONDUIT, TYPE A, 748.06
 STEEL PIPE ENCASMENT, AS PER PLAN
 SKEW: 6°55'25" R.F.
 ALIGNMENT: CURVE
 WORKING FROM LEFT TO RIGHT WITH RESPECT TO SR16:
 COS-16-1.452=CFN 1994943
 COS-16-1.453=CFN 1994944
 COS-16-1.454=CFN 1994945

NOTES:
 FOR DETAILED REQUIREMENTS FOR ITEM 611E97400 - CONDUIT, MISC.: PILOT TUBE GUIDED AUGER BORING, 72", TYPE A, 748.06, SEE THE SUPPLEMENTAL SPECIFICATION WITH THE SAME TITLE IN THE CONTRACT DOCUMENTS.
 FOR ADDITIONAL DETAILS ON THE PILOT GUIDED AUGER BORING PITS AND TEMPORARY SHEETING, SEE THE INSTRUMENTATION LAYOUT SHEET P.26.



CULVERT DETAIL
 STA. 21+29.86

DESIGN AGENCY

AECOM

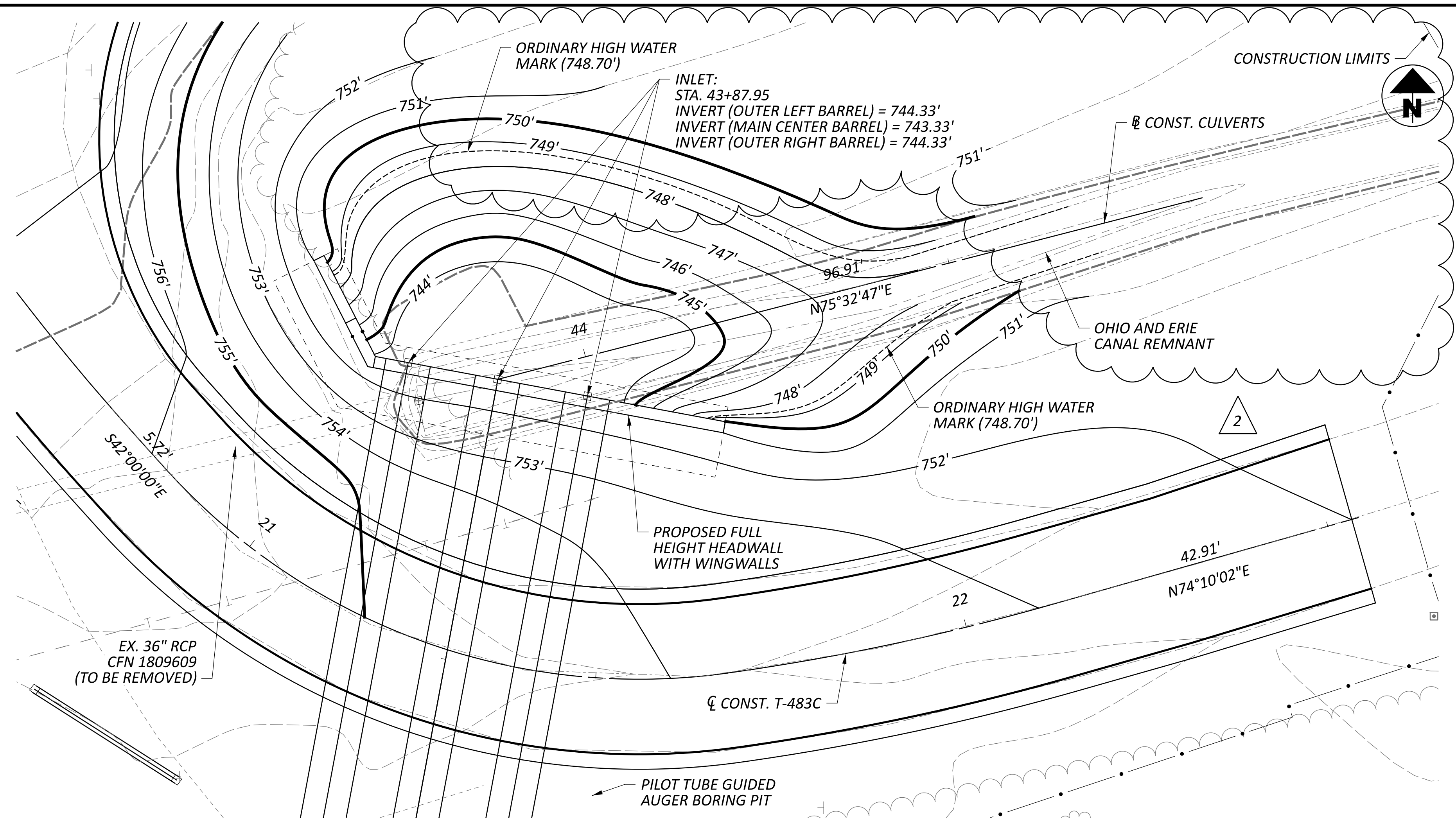
DESIGNER
 HKP

REVIEWER
 AM

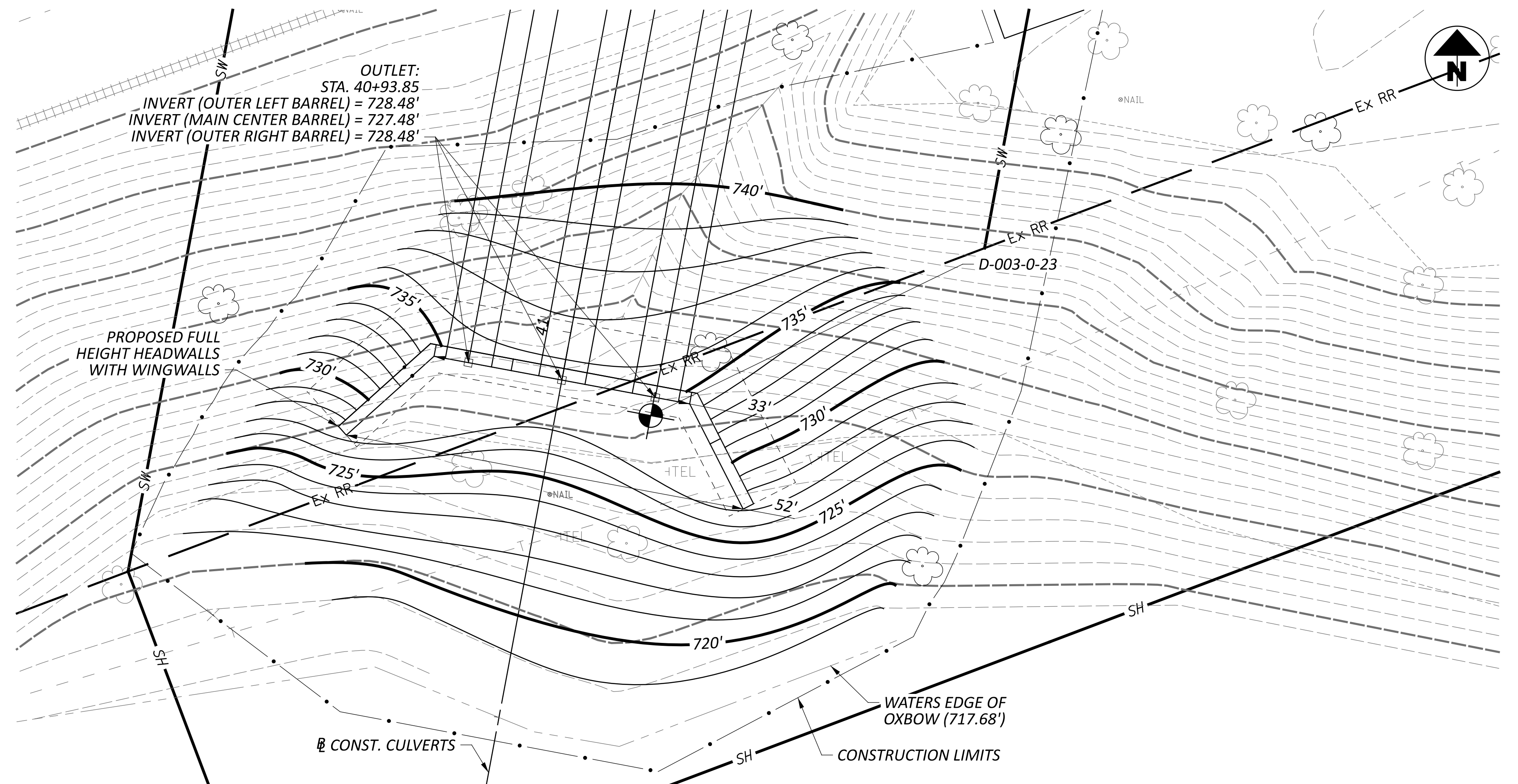
PROJECT ID
 119871

SHEET TOTAL
 P.19 31

| REV. | DESCRIPTION | DATE |
|------|-------------|------------|
| 2 | ADDENDUM | 04/20/2026 |
| 1 | ADDENDUM | 04/13/2026 |



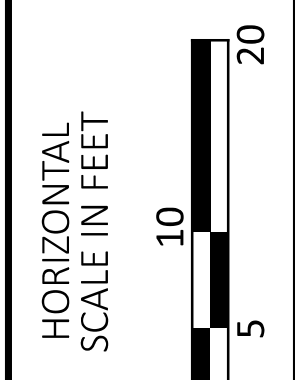
CULVERT INLET



CULVERT OUTLET

| ITEM | EXTENSION | TOTAL | UNIT | DESCRIPTION |
|------|-----------|-------|------|-------------|
| 203 | 10000 | 2 | CY | EXCAVATION |
| 203 | 20000 | 419 | CY | EMBANKMENT |

| REV. | DESCRIPTION | DATE |
|------|-------------|------------|
| 2 | ADDENDUM | 04/20/2026 |



GRADING PLAN
 CULVERT INLET AND OUTLET

DESIGN AGENCY

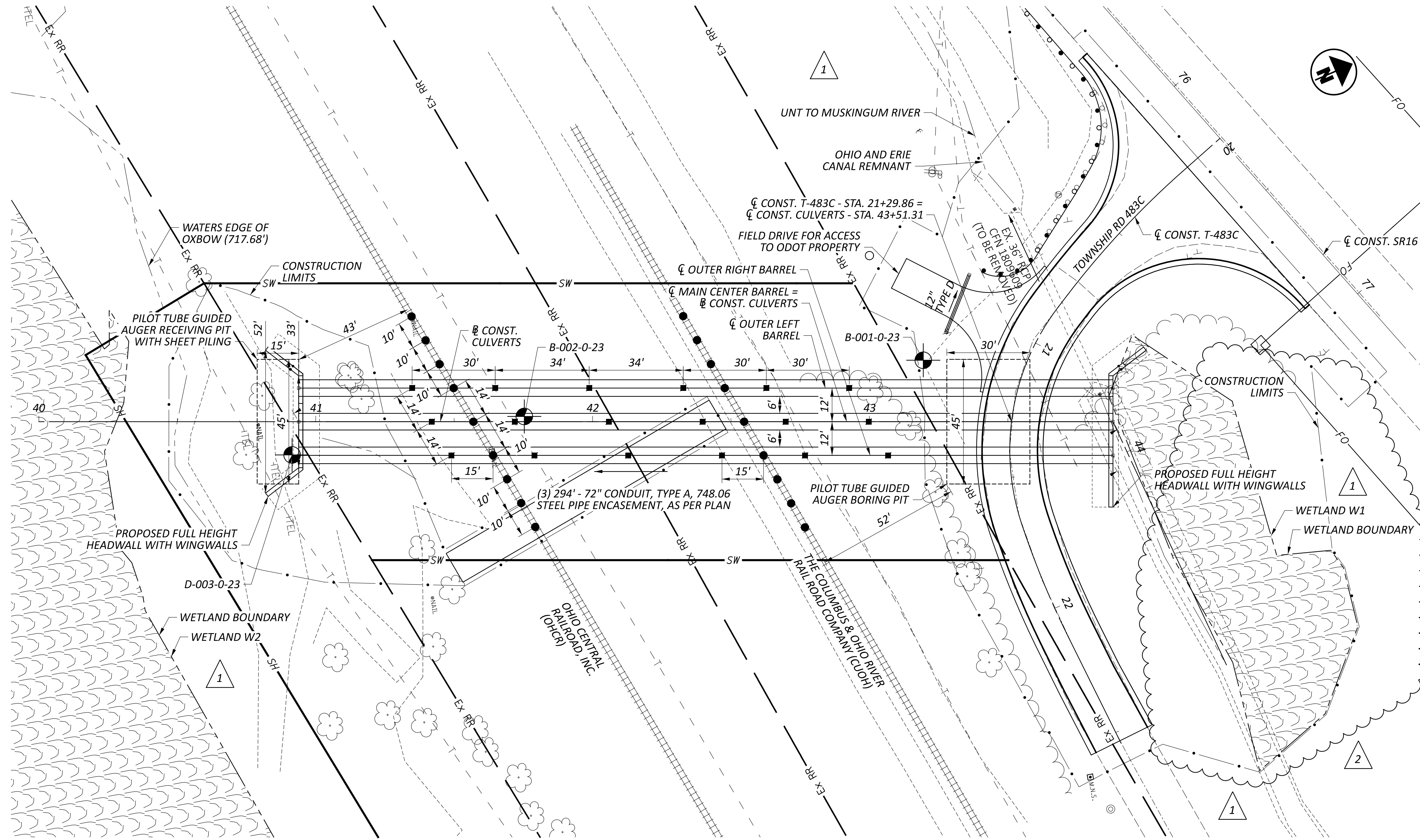
AECOM

DESIGNER
 HKP

REVIEWER
 AM 11-26-25

PROJECT ID
 119871

SHEET TOTAL
 P.25 31



NOTES:
 FOR DETAILED REQUIREMENTS FOR ITEM 611E97300 - CONDUIT, MISC.:
 GEOTECHNICAL INSTRUMENTATION AND MONITORING, SEE THE
 SUPPLEMENTAL SPECIFICATION WITH THE SAME TITLE IN THE CONTRACT
 DOCUMENTS.

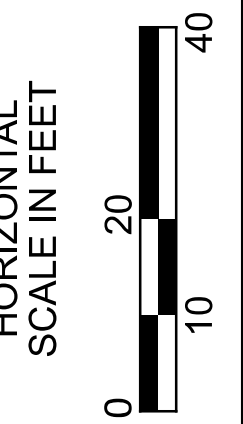
RAIL AND GROUND MONITORING POINT LOCATIONS MUST BE
 REVIEWED/APPROVED BY THE RAILROAD, PRIOR TO PERFORMING THE
 BORING ACTIVITIES.

FOR INFORMATION ONLY:
 RAIL MONITORING POINT (RMP) 18
 GROUND MONITORING POINT (GMP) 18
 AUTOMATED MOTORIZED TOTAL STATION (AMTS) 1

LEGEND

- RAIL MONITORING POINT (RMP)
- GROUND MONITORING POINT (GMP)
- AUTOMATED MOTORIZED TOTAL STATION (AMTS)

INSTRUMENTATION AND MONITORING LAYOUT DETAIL



| REV. | DESCRIPTION | DATE |
|------|-------------|------------|
| 2 | ADDENDUM | 04/20/2026 |
| 1 | ADDENDUM | 04/13/2026 |

DESIGN AGENCY

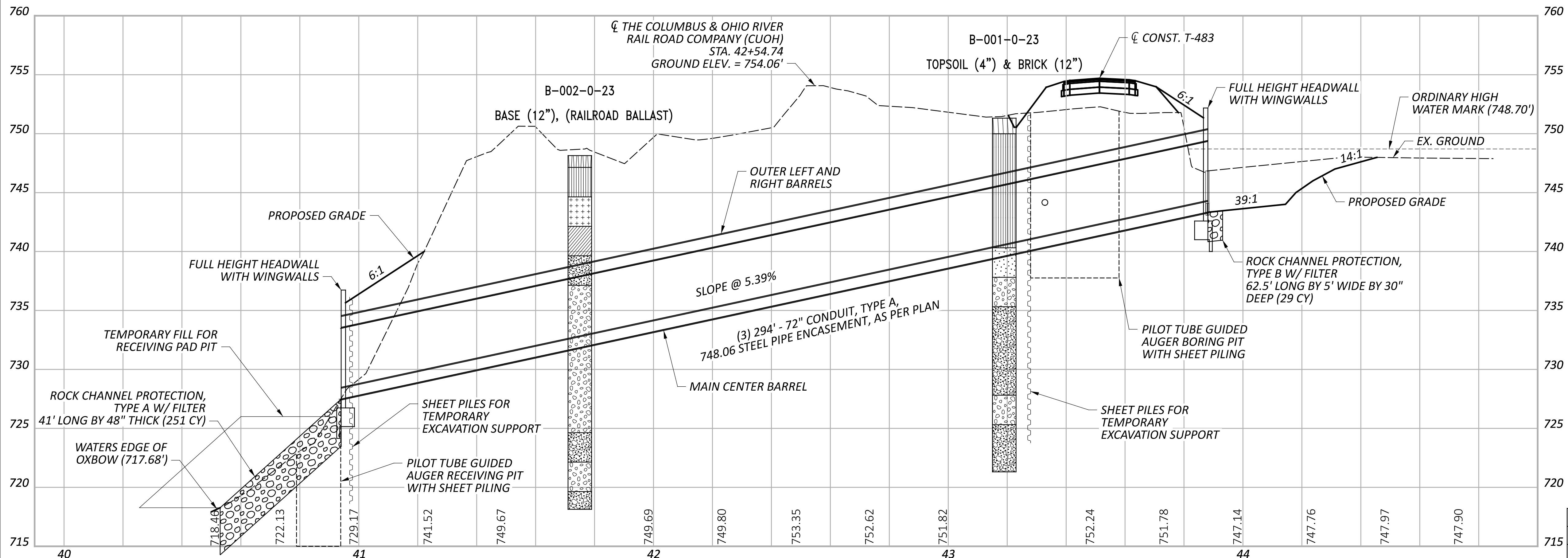
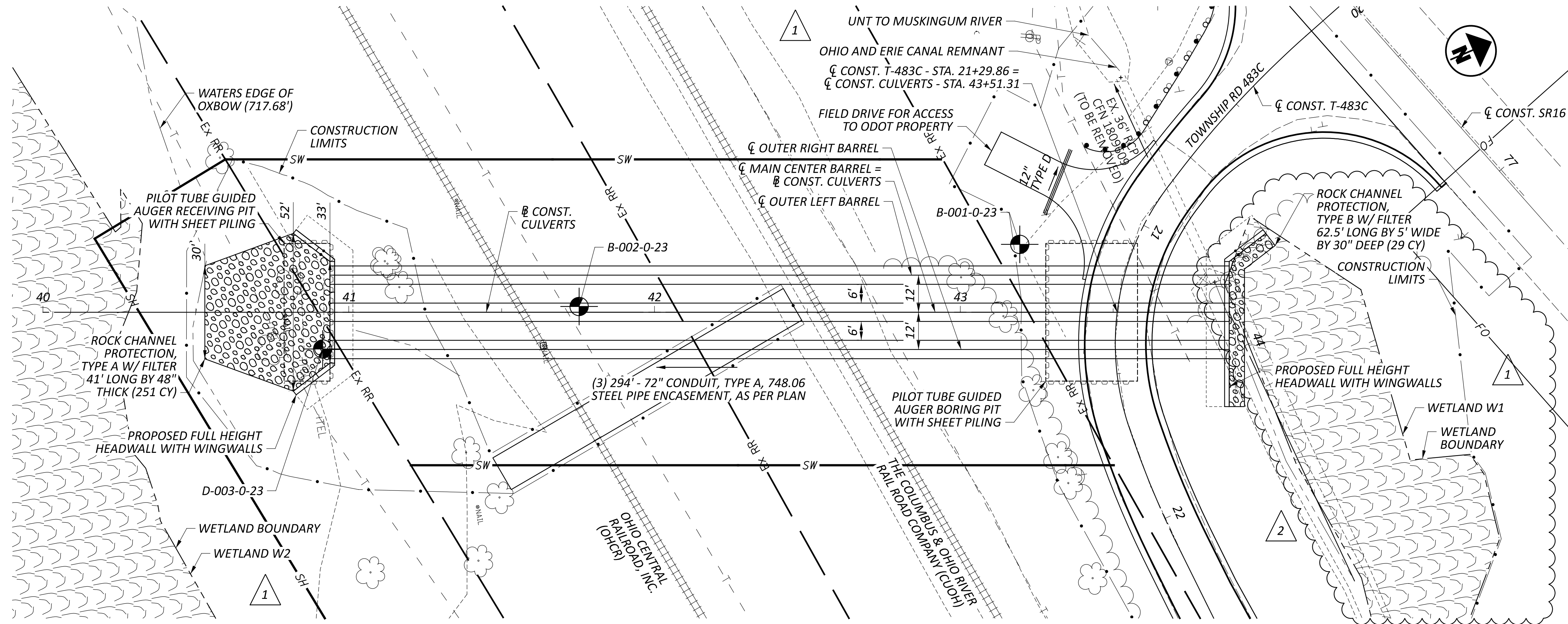
AECOM

DESIGNER
 HKP

REVIEWER
 AM 11-26-25

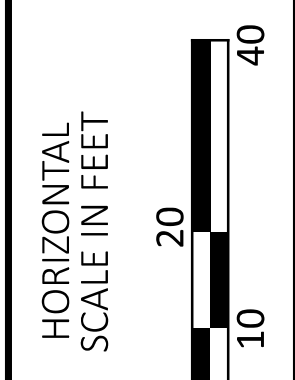
PROJECT ID
 119871

SHEET TOTAL
 P.26 31



- NOTES:
- SHEET PILE SUPPORT OF EXCAVATION IS ONLY PRESENTED FOR GENERAL GUIDANCE TO THE CONTRACTOR. ACTUAL SUPPORT OF EXCAVATION MATERIALS AND METHODS ARE TO BE DESIGNED BY THE CONTRACTOR. THE CONTRACTOR SHALL SUBMIT A DESIGN, SIGNED AND SEALED BY A PROFESSIONAL ENGINEER LICENSED IN THE STATE OF OHIO FOR THE SUPPORT OF EXCAVATION.
 - SOIL AND GROUNDWATER CONDITIONS TO BE USED FOR DESIGN OF EXCAVATION SUPPORT ARE PROVIDED IN THE GEOTECHNICAL DATA.
 - THE CONTRACTOR SHALL DETERMINE THE SIZE OF EXCAVATION SUPPORT SYSTEM AS REQUIRED FOR THEIR MEANS AND METHODS.

| REV. | DESCRIPTION | DATE |
|------|-------------|------------|
| 2 | ADDENDUM | 04/20/2026 |
| 1 | ADDENDUM | 04/13/2026 |



CULVERT DETAIL
 SOIL PROFILE

DESIGN AGENCY

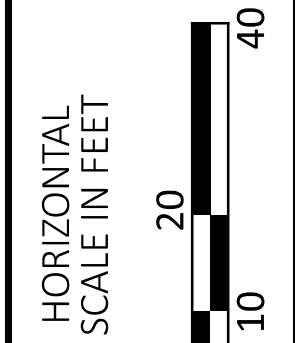
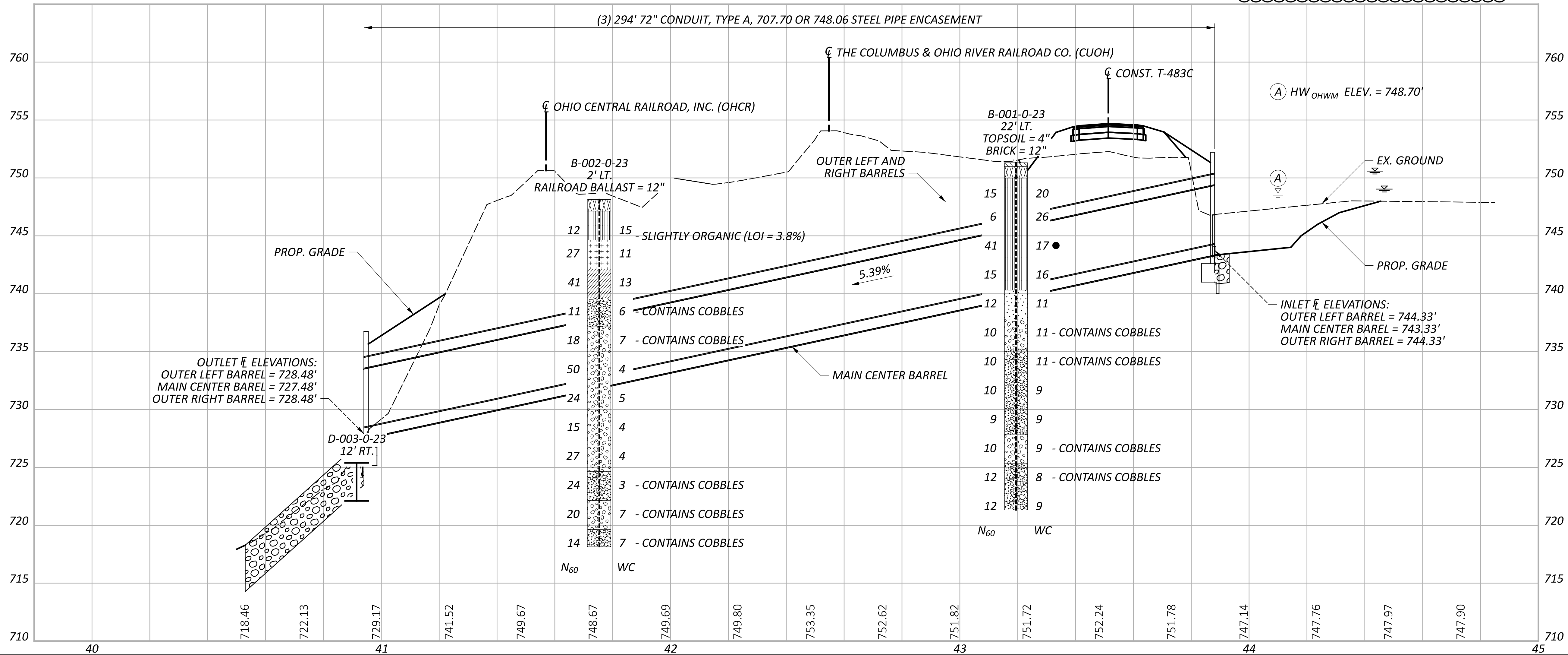
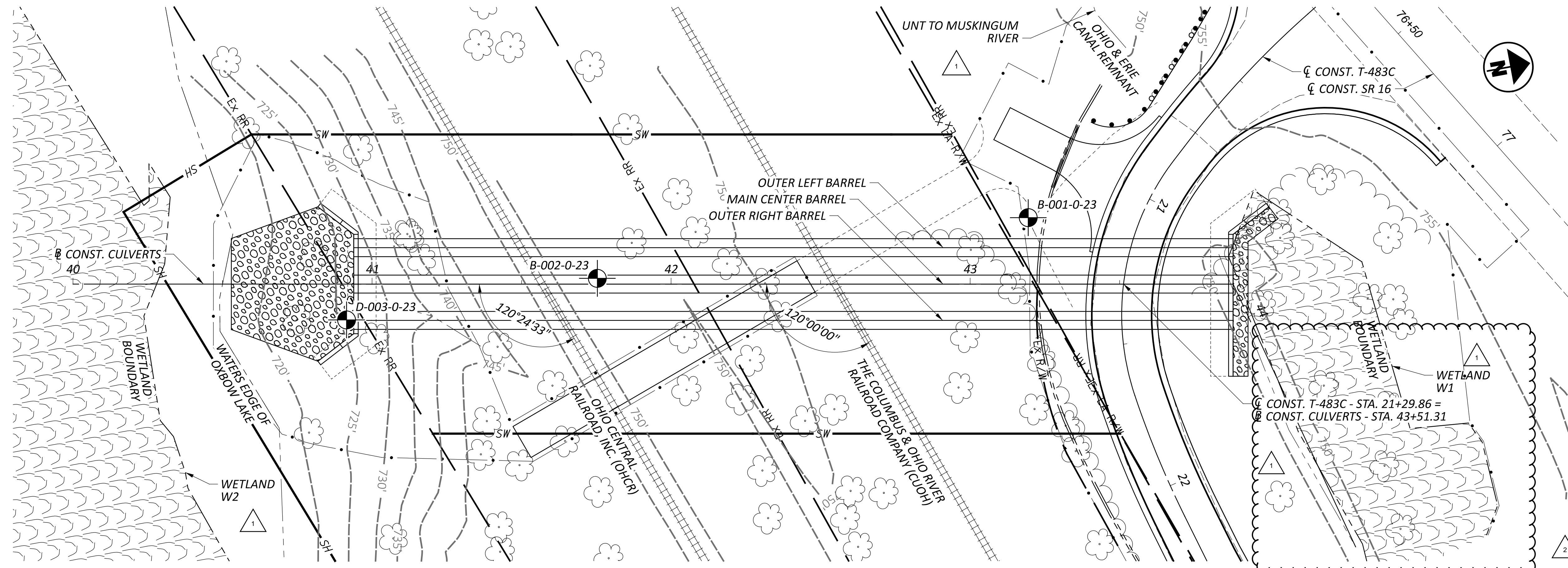
AECOM

DESIGNER
 HKP

REVIEWER
 AM 11-26-25

PROJECT ID
 119871

SHEET TOTAL
 P.27 31



GEOTECHNICAL PROFILE - CULVERT
 MULTIPLE BARREL CULVERTS AT COS-16-1.40 OVER OHIO & ERIE CANAL REMNANT

| | |
|---------------|-------|
| DESIGN AGENCY | |
| | |
| DESIGNER | |
| ARR | |
| REVIEWER | |
| SAT 07/29/25 | |
| PROJECT ID | |
| 119871 | |
| SUBSET | TOTAL |
| 2 | 4 |
| SHEET | TOTAL |
| P.29 | 31 |