

# STATE OF OHIO, DEPARTMENT OF HIGHWAYS

MICROFILMED  
JUL 6 1988

FED. RD. DIVISION	STATE	PROJECT
2	OHIO	STATE

1  
19

ASD-250-(15.85)-(17.78-23.61)  
WAY-250-(0.00-1.72)

PART 1	ASHLAND	COUNTY
PART 2	ASHLAND	COUNTY
PART 3	WAYNE	COUNTY
PART		COUNTY
PART		COUNTY
PART		COUNTY

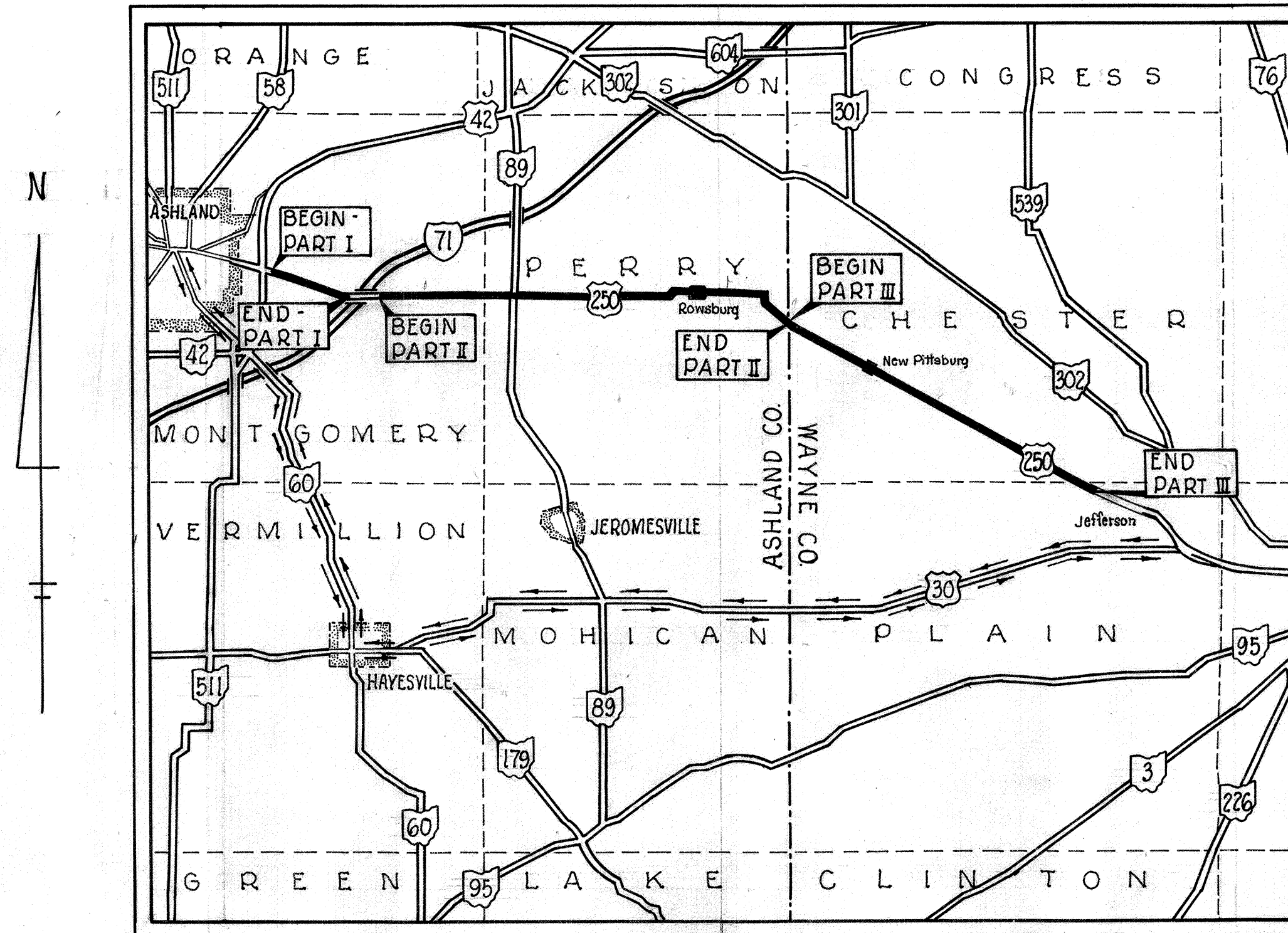
S.R. #	250	SEC.	15.85	TO	SEC.	17.05	NET LENGTH	1.20	MI.
S.R. #	250	SEC.	17.78	TO	SEC.	24.59	6.81	MI.	
S.R. #	250	SEC.	0.00	TO	SEC.	5.46	5.46	MI.	
S.R. #		SEC.		TO	SEC.			MI.	
S.R. #		SEC.		TO	SEC.			MI.	
S.R. #		SEC.		TO	SEC.			MI.	

NET LENGTH OF PROJECT & WORK = 71,101 LIN. FT. OR 13.47 MI.

MICROFILMED  
JUL 6 1987

PART	COUNTY	TOWNSHIP	CITY	VILLAGE
1	ASHLAND	MONTGOMERY		
2	ASHLAND	MONTGOMERY PERRY		
3	WAYNE	CHESTER PLAIN		

PART	DELIVERY POINT	RAILROAD	AVERAGE HAUL
1	ASHLAND	ERIE	2.7 MILES
2	ASHLAND	ERIE	7.4 MILES
3	WOOSTER	B&O	6.7 MILES



**LOCATION MAP**

SCALE: 1" = 2 Miles

1965 SPECIFICATIONS  
THE STANDARD SPECIFICATIONS OF THE STATE OF OHIO, DEPARTMENT OF HIGHWAYS, INCLUDING CHANGES AND SUPPLEMENTAL SPECIFICATIONS LISTED IN THE PROPOSAL SHALL GOVERN THIS IMPROVEMENT

THE RIGHT OF WAY NECESSARY FOR THIS IMPROVEMENT WILL BE PROVIDED BY THE STATE OF OHIO

I HEREBY APPROVE THESE PLANS AND DECLARE THAT THE MAKING OF THIS IMPROVEMENT WILL REQUIRE THE PART TIME CLOSING OF THE HIGHWAY TO TRAFFIC, AS NOTED ON SHEET NO. 5, DURING WHICH TIME DETOURS WILL BE PROVIDED AS SHOWN HEREON. PROVISIONS FOR THE MAINTENANCE AND SAFETY OF TRAFFIC WILL BE AS SET FORTH ON THE PLANS AND ESTIMATES.

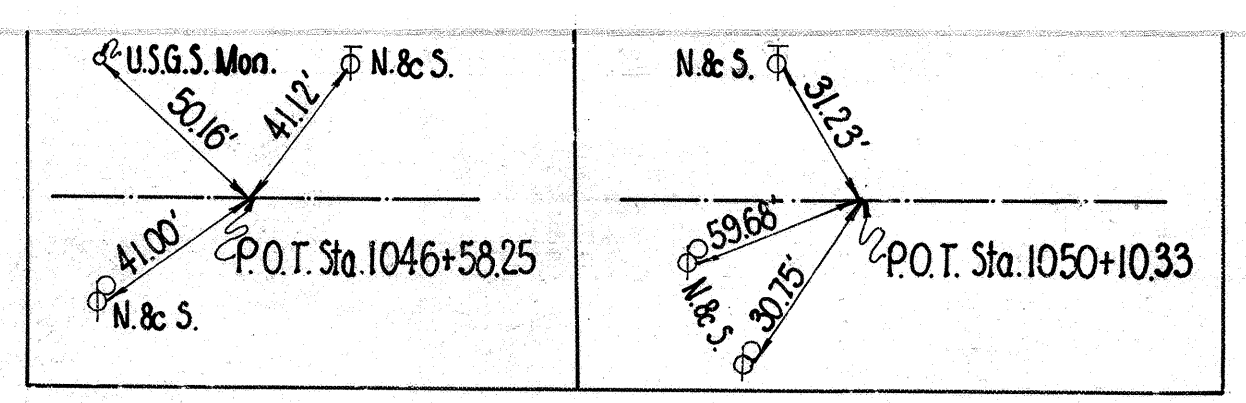
- APPROVED D.H. Cimmer  
DATE 4-22-66 DIVISION DEPUTY DIRECTOR
- APPROVED R.W. Wilson  
DATE 5-22-66 DEPUTY DIRECTOR OF PLANNING AND PROGRAMMING
- APPROVED C.H. Albrecht  
DATE 5-2-66 ENGINEER OF BRIDGES
- APPROVED R.V. Ricketts  
DATE 5-11-66 ENGINEER OF LOCATION AND DESIGN
- APPROVED P.E. Shultz  
DATE 5-11-66 DEPUTY DIRECTOR OF DESIGN AND CONSTRUCTION
- APPROVED T.M. Board  
DATE 5-24-66 DEPUTY DIRECTOR OF RIGHT OF WAY
- APPROVED \_\_\_\_\_  
DATE \_\_\_\_\_ ENGINEER OF MAINTENANCE
- APPROVED \_\_\_\_\_  
DATE \_\_\_\_\_ DEPUTY DIRECTOR OF OPERATIONS
- APPROVED \_\_\_\_\_  
DATE \_\_\_\_\_ FIRST ASSISTANT DIRECTOR
- APPROVED P.E. Mashuda  
DATE 5/24/66 DIRECTOR OF HIGHWAYS

### INDEX OF SHEETS

TITLE SHEET	1
TYPICAL SECTIONS	2
CONSTRUCTION DETAILS	3
GENERAL NOTES	4
GENERAL SUMMARY	5
PAVEMENT AND BASE WIDENING QUANTITIES	6
CULVERT EXTENSION ASD-250-1931	7
BRIDGE REPLACEMENT DETAILS ASD-250-1984	8-10
GUARD RAIL REPLACEMENT & CULVERT EXTENSION ASD-250-2052	11-13
CULVERT EXTENSION ASD-250-2080	14
GUARD RAIL REPLACEMENT	14&15
RIGHT OF WAY	16-19

PORTION TO BE IMPROVED   
STATE AND FEDERAL HIGHWAYS   
INTERSTATE HIGHWAYS   
DETOUR

SUPPLEMENTAL PRINTS OF STANDARD CONSTRUCTION DRAWINGS		SUPPLEMENTAL SPECIFICATIONS	
BP-5	6-1-65 HW-E	6-1-65	1001
GR-1	6-1-65 MC-1	6-1-65	
GR-2	6-1-65 MC-4	6-1-65	
MC-3	6-1-65 L-1	6-1-65	
MC-6	6-1-65 BP-6	6-1-65	
SP-53	6-30-61 SBC-45	9-8-47	
GR-2A	9-1-65		

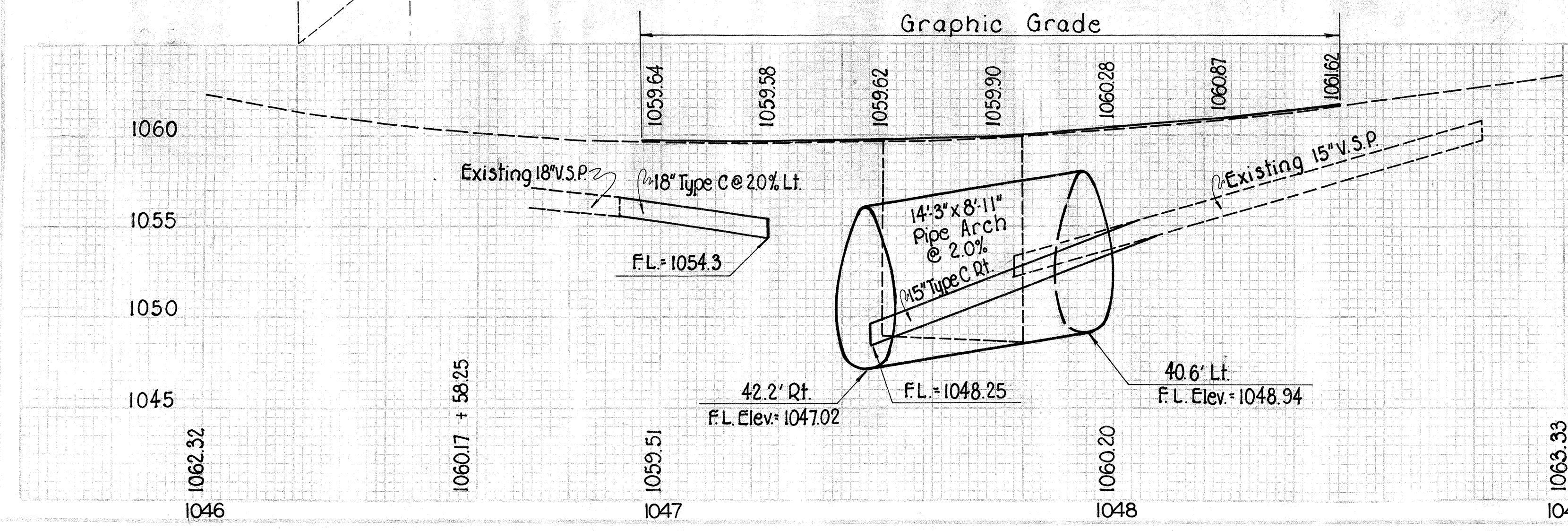
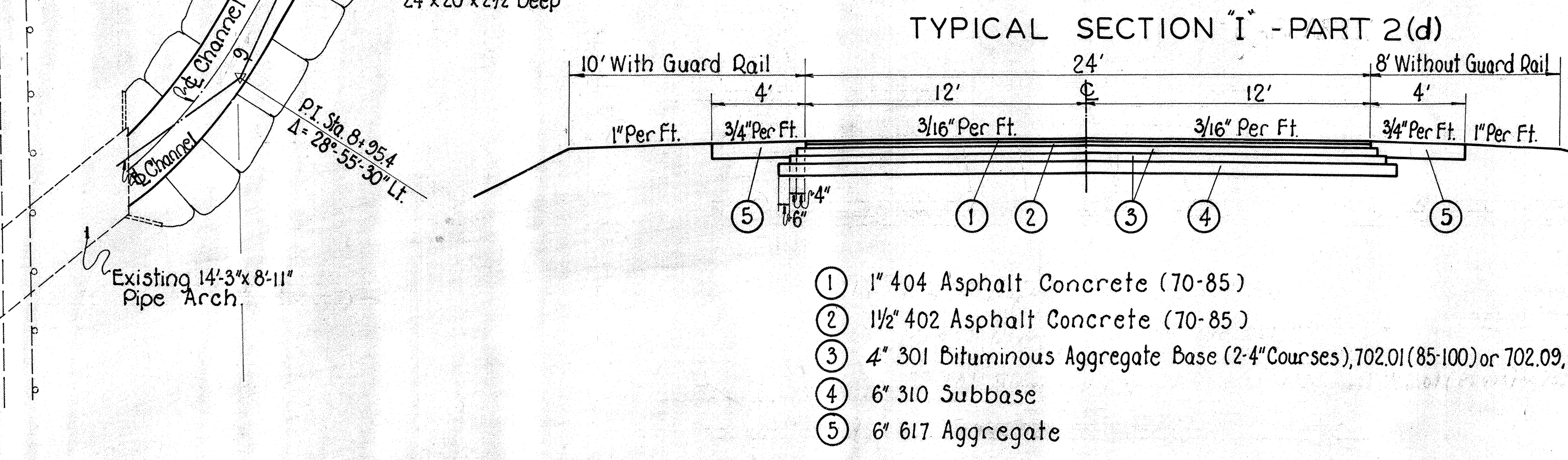


S-2 Structure No. ASD-250-1984  
Sta. 1047+70 D.A. = 2.1 Sq. Mi. Skew = 30° L.F.  
Proposed: 14'-3" x 8'-11" Pipe Arch Culvert.  
Fill on Culvert @  $\phi = 2.8'$  (Proposed).  
Fill on Culvert @  $\phi = 10'$  (Future Proposed).  
FOR CULVERT DETAILS - SEE SHEET No. 9.

For Additional Channel Details  
& Profile - See Sheet No. 10.

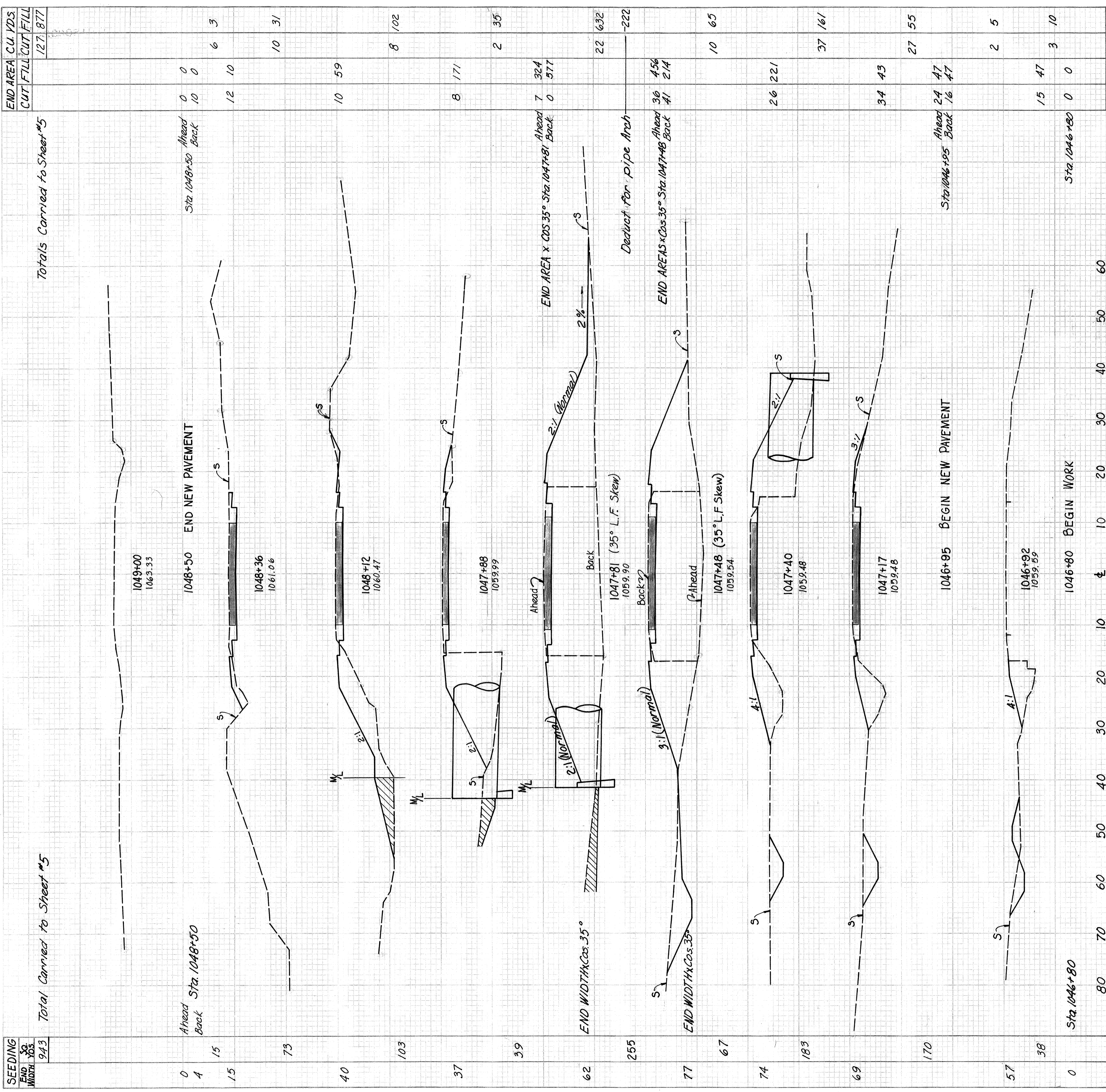
EXISTING BRIDGE DATA (TO BE REMOVED)  
ASD-250-1984  
Type: Concrete Girder  
Span: 32'-0"  
Clear Roadway: 25'  
Wearing Surface: Bituminous

B.M. U.S.C. & G.S. Mon. \*N-240-1959  
31' Lt. Sta. 1046+18.3  
Elev. 1062.63



Ref. No.	Station	Description	Units	Quantity	Notes
605		Aggregate Drains	Lin. Ft.	24	
		Bends & Branches			18" x 45° Bend: 1 15" x 30° Bend: 2
607		Jute Matting	Sq. Yds.	97	
617		Aggregate	Cu. Yds.	23	
606		Guard Rail Rebuilt Type-4	Lin. Ft.	175.0	87.5
603		Conduit Class B bedding Type C	Lin. Ft.	50	96
602		Concrete Masonry	Cu. Yds.	24.00	24.00
601		Dumped Rock Channel Protection	Cu. Yds.	44.4	44.4
202		Existing Obstructions Removed & Disposed Of			
		Pavement	Sq. Yds.		273
		Structure	Lump		273
		Guard Rail For Re-use Type-4	Lin. Ft.	50	44
		Pipe 24" & Under	Lin. Ft.	42*	50
310		Subbase	Cu. Yds.	76	
301		Bituminous Aggregate Base	Cu. Yds.	96	
404		Asphalt Concrete	Cu. Yds.	12	
402		Asphalt Concrete	Cu. Yds.	17	
A-1	1046+36 Rt.				
P-1	1046+95 to 1048+50				
D-1	1046+88 to 1047+24 Lt.				
D-2	1046+80 to 1047+93 Lt.				
D-3	1047+47 to 1048+08 Rt.				
S-2	1047+70				
GR-1	1047+55 to 1048+42.5 Lt.				
GR-2	1046+97 to 1047+84.5 Rt.				
R-1	1046+82 to 1046+91 Lt.				
R-2	1046+87 to 1047+55.5 Lt.				
R-3	1046+97 to 1047+40.5 Rt.				
R-4	1047+48 to 1047+81				
R-5	1046+95 to 1048+50				
R-6	1047+90.5 to 1048+40.5 Lt.				
R-7	1047+77.5 to 1048+27.5 Rt.				
Totals					

\*Includes Removal of Existing Headwall @ HW-E Endwall.

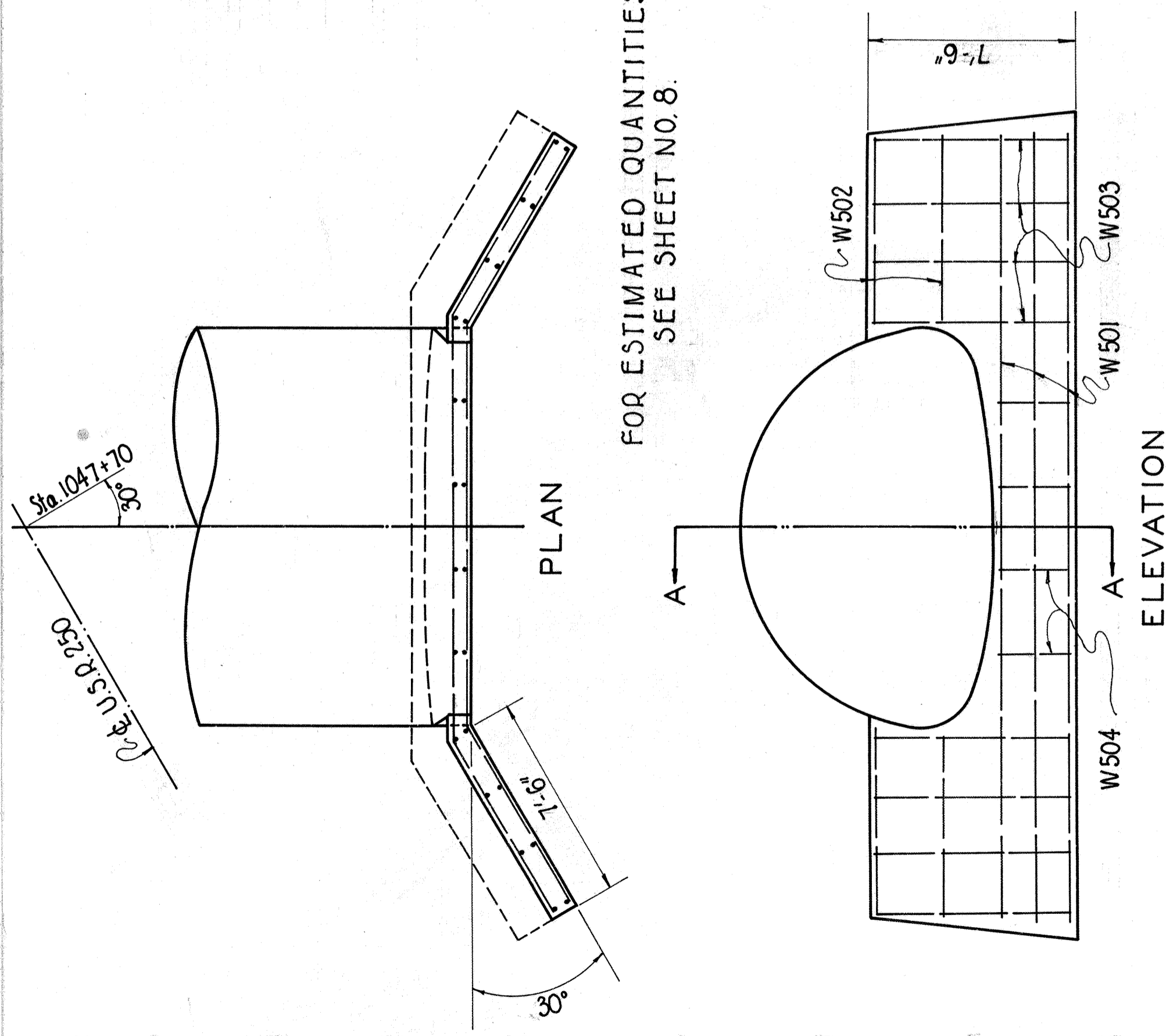


STEEL LIST  
(For Two Headwalls)

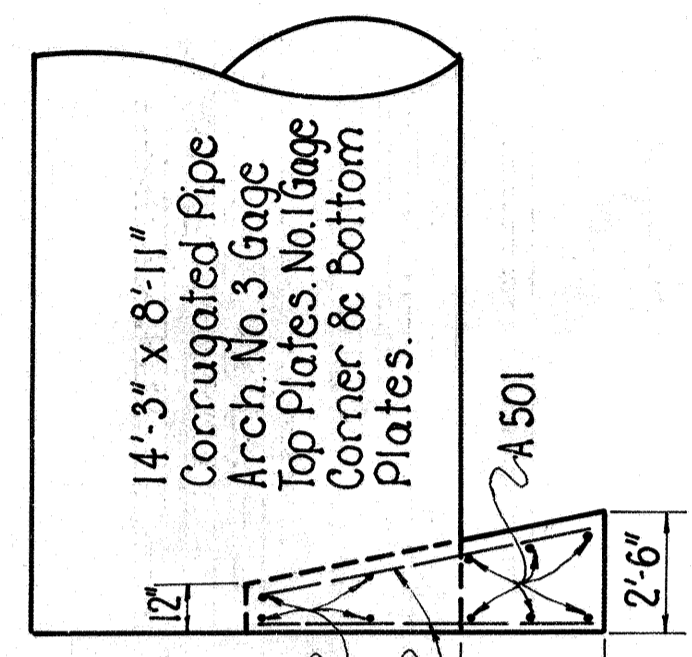
Mark No.	Length	Weight
W501*	12	28.9*
W502	16	7.2*
W503	32	7.2*
W504	16	2.6*
Total (Included in 602) 761		

\*Field Bend.

NOTE: See Standard Drawing SP-53 for additional Details and Notes, with the following exceptions:  
(a) Concrete shall be Class 'C'.  
(b) The portion of the Arch which extends above the Headwall shall not be cut off to conform to the slope.



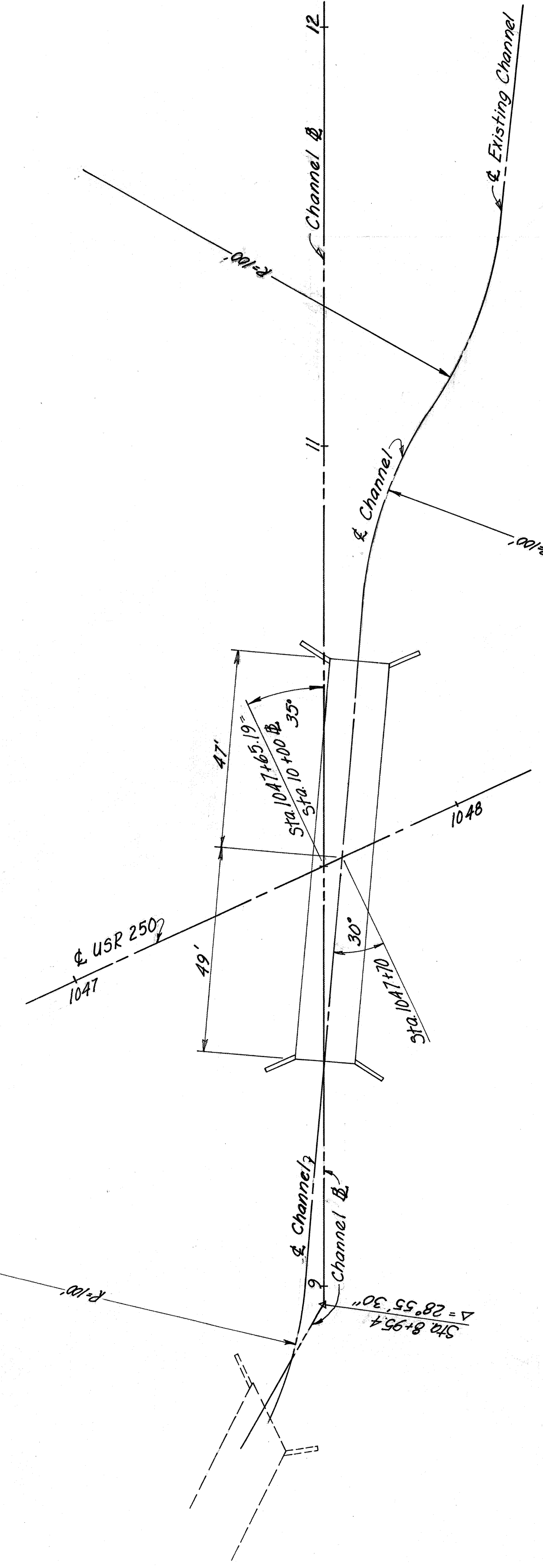
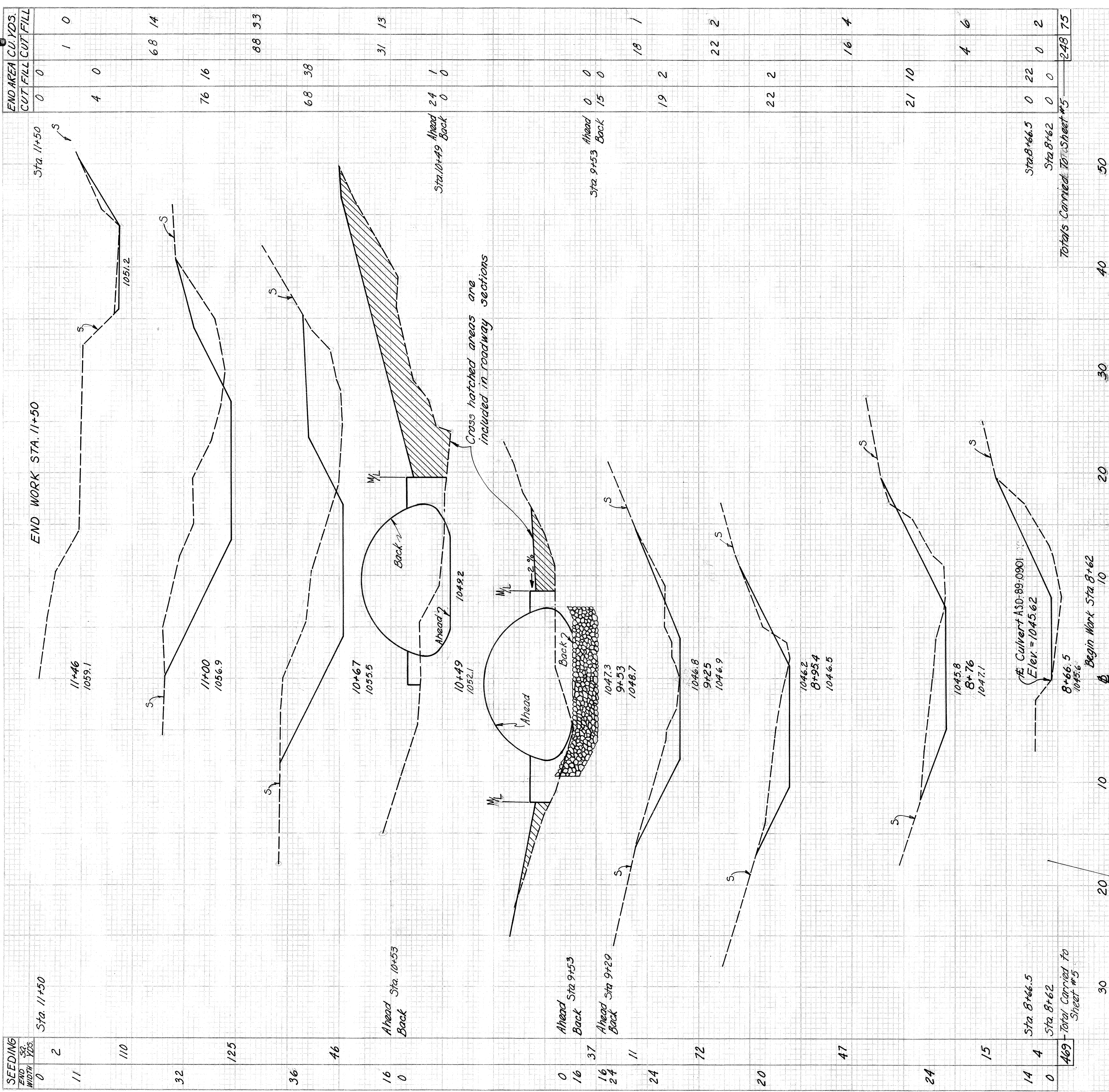
FOR ESTIMATED QUANTITIES  
SEE SHEET NO. 8.



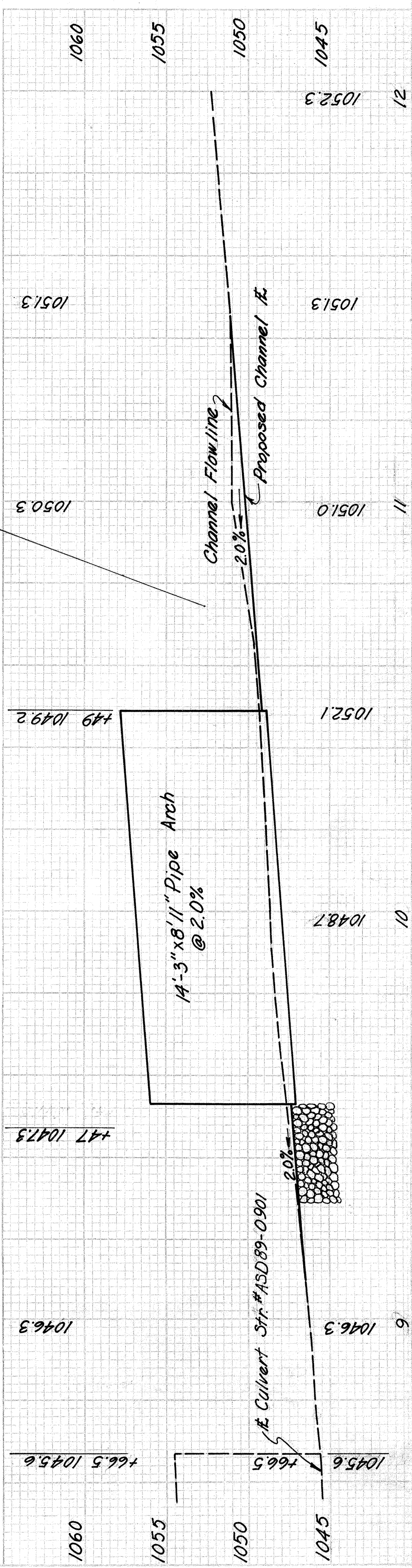
SECTION A-A

HEADWALL DETAILS - ASD-250-1984 - STA. 1047+70

MICROFILMED  
JUL 6 1988



FED. RD. DIVISION: 2, STATE: OHIO, PROJECT: ASD-250-(15.85)(17.78-23.61) WAY-250-(0.00-1.72) PART 2(d)



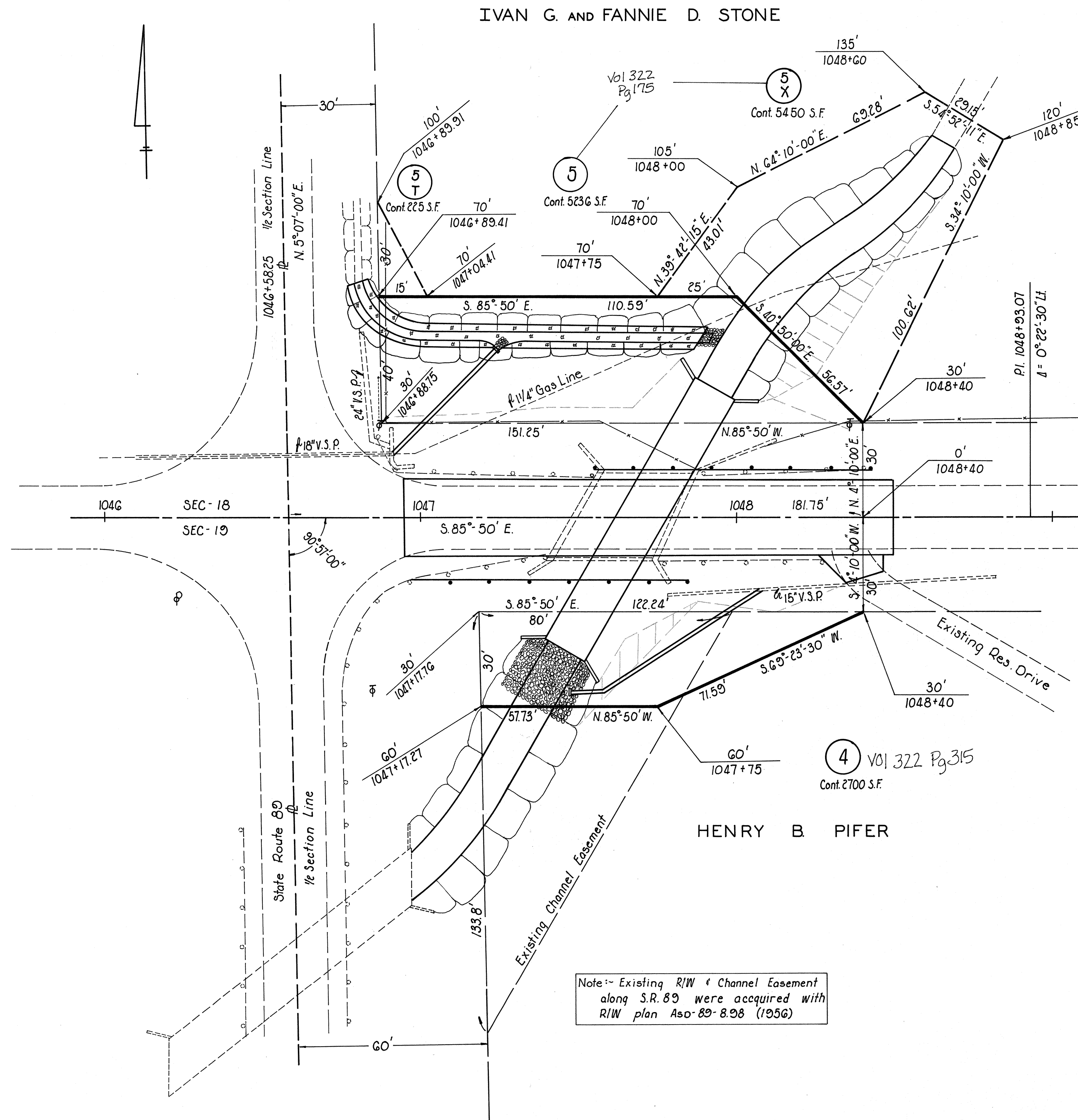
STR. ASD-250-1984 CHANNEL PLAN & CROSS SECTION

FED. RD. DIVISION	STATE	PROJECT	
2	OHIO		

17  
19  
2  
4

ASD-250 - (15.85) - (17.78-23.61)  
WAY-250 - (000-1.72)  
RIGHT OF WAY PLAN  
SCALE: 1" = 20'

STR. NO. ASD-250-1984



Note: Existing R/W & Channel Easement along S.R. 89 were acquired with R/W plan ASD-89-8.98 (1956)

TYPE FUNDS - STATE	
PLAN	COMPLETED
	4-22-66
REV/DATE	DESCRIPTION