

STATE OF OHIO
DEPARTMENT OF HIGHWAYS

FED. RD. DIVISION	STATE	PROJECT	
2	OHIO	STATE	

ASD-511-8.44

ASD-511-8.44

ASHLAND COUNTY

MONTGOMERY AND VERMILLION TOWNSHIPS

CONVENTIONAL SIGNS

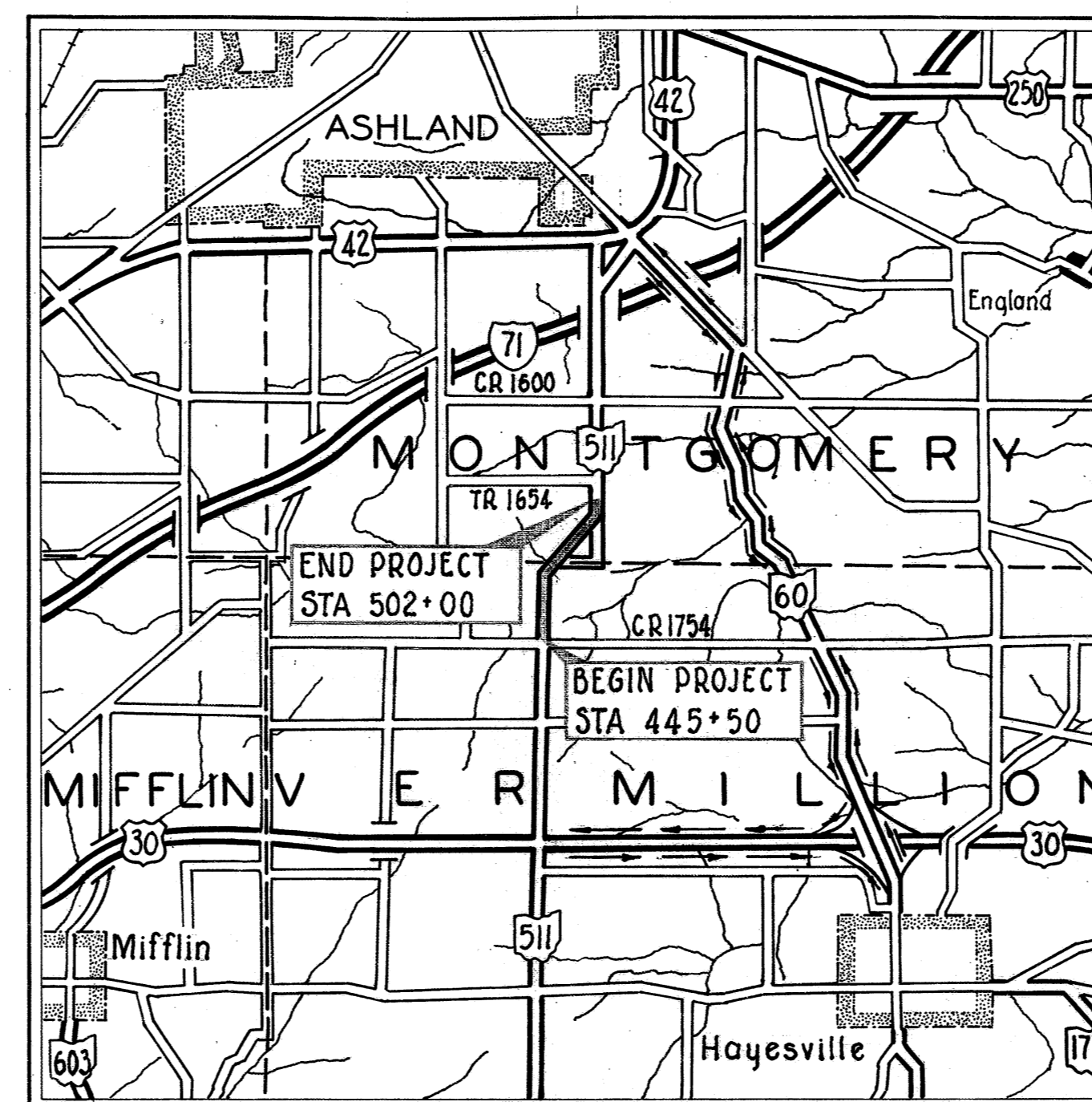
County Line	-----	Limited Access (only)	----- LA
Township Line	-----	Right of Way (only)	----- RW
Section Line	-----	Limited Access & Right of Way	----- LA&RW
Corporation Line	----- or -----	Existing Right of Way	-----
Fence Line (existing)	-x-x- (proposed)	Property Line	----- (in existing fence) -x-x-
Center Line	-----	Railroad	-----
Trees	☉, Stumps	Guardrail (existing)	-o-o- (proposed)
Utility Poles: Telephone	∅, Power		∅, Light

INDEX OF SHEETS

TITLE SHEET	1
SCHEMATIC PLAN	2
TYPICAL SECTIONS	3
SPECIAL CONSTRUCTION DETAILS	4
CALCULATIONS	5
GENERAL NOTES	5 & 6
SUPERELEVATION TABLES	6
GENERAL SUMMARY	7
PLAN AND PROFILE SHEETS	8-14
CROSS SECTIONS	15-29
EXISTING S.R. 511 PLAN AND CROSS SECTIONS	30-33
CULVERT DETAILS	34-38
CENTERLINE SURVEY PLAT	39
RIGHT-OF-WAY	40-47

LINE DATA

		PROJECT		WORK	
BEGIN	STA	445 +50	STA	444+85	
END	STA	502 +00	STA	503+00	
NET LENGTH		5,650.00 LIN.FT.		5,815.00 LIN.FT.	
		OR 1.070 MILES		OR 1.101 MILES	



LOCATION MAP

SCALE OF MILES

Portion to be Improved	=====
Interstate Roads	=====
State and Federal Roads	-----
Other Roads	-----
Detour	-----

SCALES

Plan	0	50'
Profile: Horizontal	0	50'
Profile: Vertical	0	5'

1971 SPECIFICATIONS

The standard specifications of the State of Ohio, Department of Highways, including changes and supplemental specifications listed in the proposal shall govern this improvement.

The right of way for this improvement will be provided by the State of Ohio.

I hereby approve these plans and declare that the making of this improvement will require the closing to traffic of the highway and that detours will be provided as indicated on these plans.

Approved: *H. H. Reader*
Date 2-2-71 Division Deputy Director

Approved: *C. V. Abante*
Date 3-20-71 Engineer of Bridges

Approved: *E. J. Schaefer*
Date 4-1-71 Engineer of Location & Design

Approved: *H. Krause*
Date 4-1-71 Deputy Director of Design & Construction

Approved: *R. A. Neelings*
Date 4/18/71 Deputy Director of Right of Way

W. RR #8V2 3-30-71
Approved: *William Bunkley*
Date 4-8-71 Deputy Director of Planning & Programming

Approved: *William P. McKenna*
Date 4-8-71 First Assistant Director

Approved: *R. R. Rely*
Date 4/9/71 Director of Highways

SUPPLEMENTAL PRINTS OF STANDARD CONSTRUCTION DRAWINGS			
BP-5	1-1-71	L-1	6-1-65
BP-6	6-1-65		
CB-2-2A&B	6-1-65	MC-1	6-13-69
		MC-3	6-20-69
		MC-4	6-13-69
GR-4	1-1-71	SP-53	6-30-61
GR-2A	1-1-71		
GR-5	1-1-71		
HW-4	1-1-70		

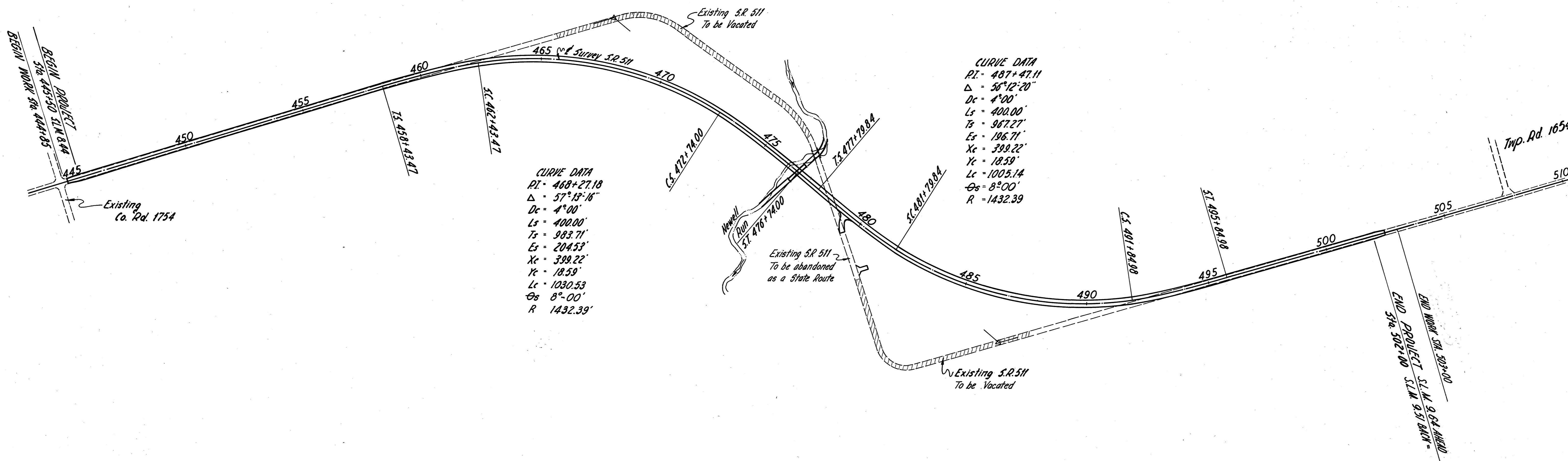
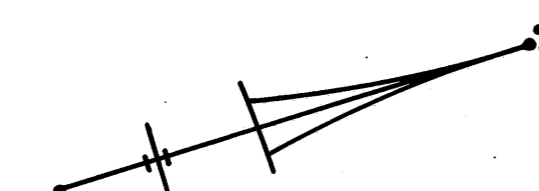
SUPPLEMENTAL SPECIFICATIONS	
1001	1-1-69

APPROVED: _____
STATE HIGHWAY ADMINISTRATION
DATE: _____

SCHEMATIC PLAN

SCALE : 1" = 200'

DESIGN DESIGNATION
 CURRENT (1971) ADT = 525
 DESIGN YEAR (1991) ADT = 1230
 DESIGN HOURLY VOLUME = 150
 DIRECTIONAL DISTRIBUTION = 60%
 PERCENT TRUCKS = 7%
 DESIGN SPEED = 60 M.P.H.



CURVE DATA
 P.I. = 468+27.18
 $\Delta = 57^{\circ}13'16''$
 Dc = 4°00'
 Ls = 400.00'
 Ts = 983.71'
 Es = 204.53'
 Xc = 399.22'
 Yc = 18.59'
 Lc = 1030.53'
 $\Theta_s = 8^{\circ}00'$
 R = 1432.39'

CURVE DATA
 P.I. = 487+47.11
 $\Delta = 56^{\circ}12'20''$
 Dc = 4°00'
 Ls = 400.00'
 Ts = 967.27'
 Es = 196.71'
 Xc = 399.22'
 Yc = 18.59'
 Lc = 1005.14'
 $\Theta_s = 8^{\circ}00'$
 R = 1432.39'

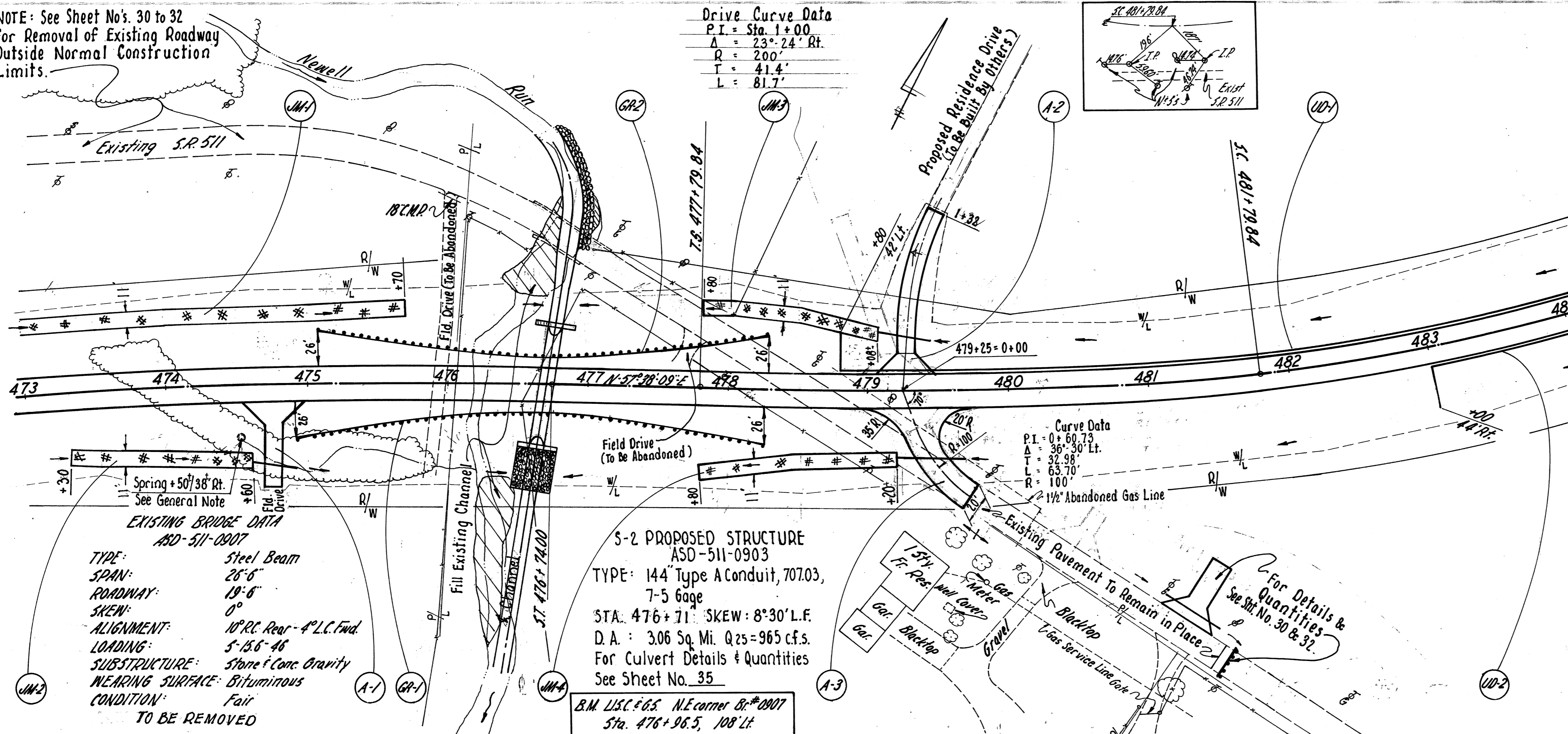
NOTE: See Sheet No's. 30 to 32
For Removal of Existing Roadway
Outside Normal Construction
Limits.

Drive Curve Data
P.I. = Sta. 1+00
Δ = 23° 24' Rt.
R = 200'
T = 41.4'
L = 81.7'

CALC. BY - W.T. 9-70
CHKD. BY - R.D.G. 9-70

FED. DIVISION	STATE	PROJECT
2	OHIO	

ASD-511-8.44



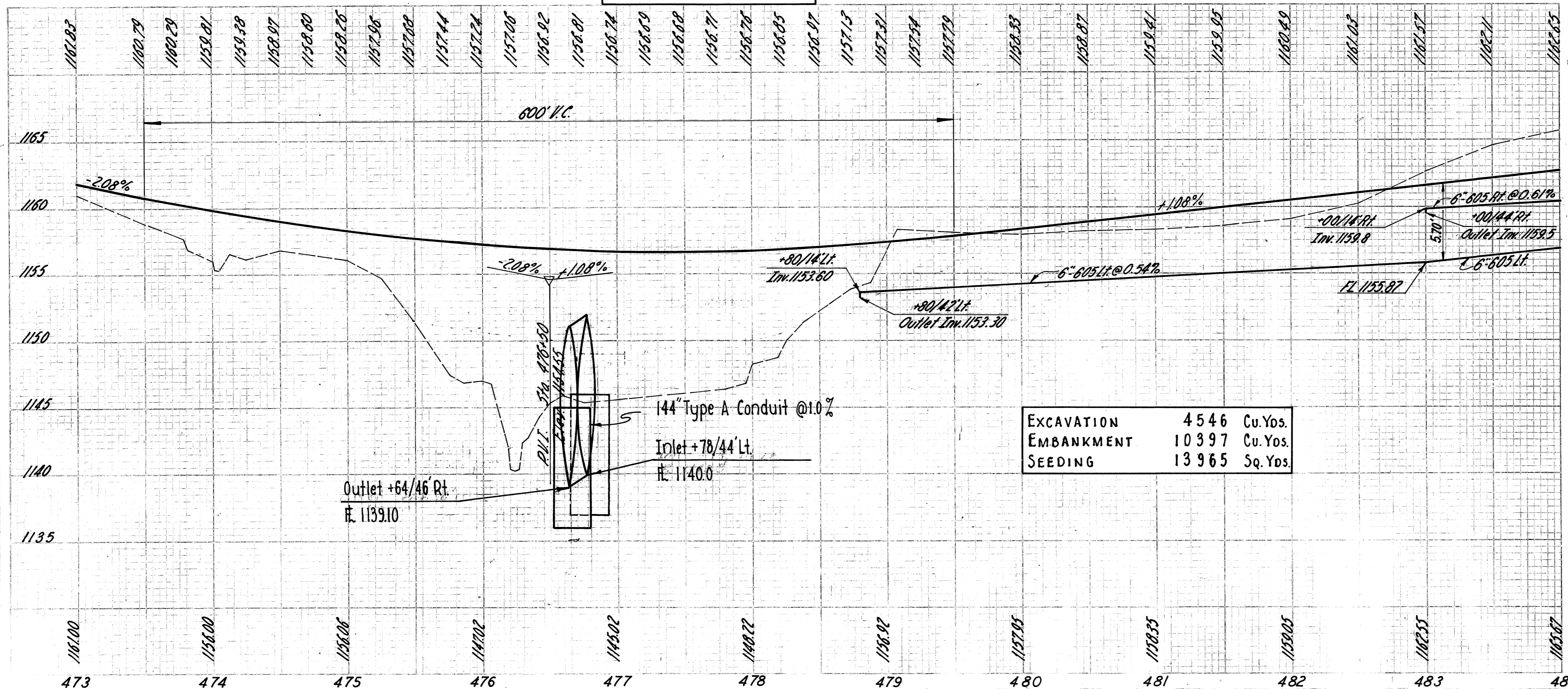
EXISTING BRIDGE DATA
ASD-511-0907

TYPE: Steel Beam
SPAN: 28'-6"
ROADWAY: 19'-6"
SKEW: 0°
ALIGNMENT: 10° RC Rear - 4° LC Fwd.
LOADING: 5-15.6-46
SUBSTRUCTURE: Stone & Conc Gravity
WEARING SURFACE: Bituminous
CONDITION: Fair
TO BE REMOVED

S-2 PROPOSED STRUCTURE
ASD-511-0903

TYPE: 144" Type A Conduit, 707.03,
7-5 Gage
STA. 476+71' SKEW: 8°30' L.F.
D.A. = 3.06 Sq. Mi. Q25=965 c.f.s.
For Culvert Details & Quantities
See Sheet No. 35

B.M. L.S.C. # 65, N.E. corner of #2007
Sta. 476+96.5, 108' Lt.
Elevation: 1147.040



EXCAVATION	4546	Cu. Yds.
EMBANKMENT	10397	Cu. Yds.
SEEDING	13965	Sq. Yds.

Ref. No.	Station	Item	Quantity	Unit
		6" 90° Bend		
667		Seeding And Jute Matting	330	Sq. Yds.
605		Pipe Underdrain	159	Lin. Ft.
		Anchor Assembly	2	Each
606		Guard Rail Type 7	2875	Lin. Ft.
301		Bituminous Aggregate Base	23.5	Cu. Yds.
603		CONDUIT Type F	10	Lin. Ft.
		Type D	32	Lin. Ft.
		Type D	36	Lin. Ft.
203		Subgrade Compaction	208	Sq. Yds.
404		Asphalt Concrete (65-100)	9.8	Cu. Yds.
304		AGGREGATE BASE	78.7	Cu. Yds.
		TOTALS		

* Pavement Same as Mainline.

ASD-511-844

Calc. By: B. H. 8/70
Chkd. By: R.E.M. 8/70

CHANNEL EMBANKMENTS:

PORTIONS OF THE EXISTING CHANNEL OUTSIDE THE ROADBED SHALL BE FILLED AND SLOPED TO DRAIN AS CALLED FOR ON THE PLANS AND INCLUDED FOR PAYMENT IN THE PRICE BID FOR ITEM 203 EMBANKMENT. THE CONTRACTOR SHALL USE EITHER SUITABLE OR UNSUITABLE MATERIAL TO THE EXTENT AVAILABLE FOR CHANNEL EMBANKMENTS.

AREAS WHERE CHANNEL EMBANKMENTS ARE TO BE PLACED SHALL BE CLEARED OF WEEDS AND BRUSH.

THE REQUIREMENTS FOR MOISTURE, DENSITY CONTROL, BENCHING, AND SUITABLE MATERIALS SHALL BE WAIVED.

THE DEPTH OF LAYERS IN WHICH THE EMBANKMENTS ARE PLACED AND THEIR COMPACTION SHALL, IN LIEU OF THE REQUIREMENTS OF ITEM 203, CONFORM WITH ACCEPTABLE CONSTRUCTION PRACTICES AS DETERMINED BY THE ENGINEER.

NO PROVISION OF THE SPECIFICATIONS SHALL BE WAIVED FOR EMBANKMENTS WHICH SUPPORT ANY PORTION OF THE NEW ROADBED OR STRUCTURAL MEMBERS.

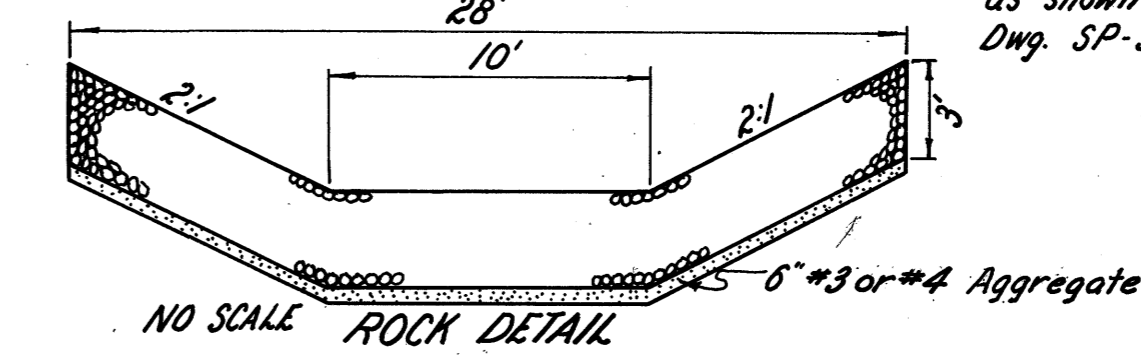
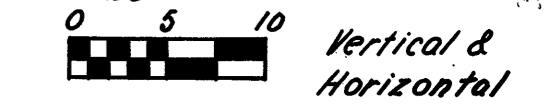
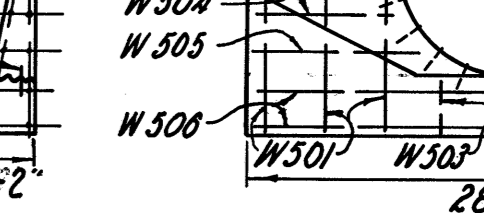
PAYMENT FOR ALL OF THE ABOVE SHALL BE INCLUDED IN THE UNIT PRICE BID FOR ITEM 203 EMBANKMENT.

NOTE: See Standard Drawing SP-53 for additional details and notes.
Concrete shall be Class C.
Cost of furnishing and placing Reinforcing Steel shall be included in the Unit price bid for Item 602 Concrete Masonry.

REINFORCING STEEL			
Mark	Number	Type	Length
W501	24	Str.	8'-8"
W502	8	Str.	3'-2"
W503	4	Str.	2'-8"
W504	16	Str.	7'-1"
W505	8	Str.	8'-10"
W506	8	Str.	27'-8"

Use Anchor Bolts @ approx 1'-6" c/c. (See Std. Dwg. SP-53)

Use Anchor Bolts as shown on Std. Dwg. SP-53



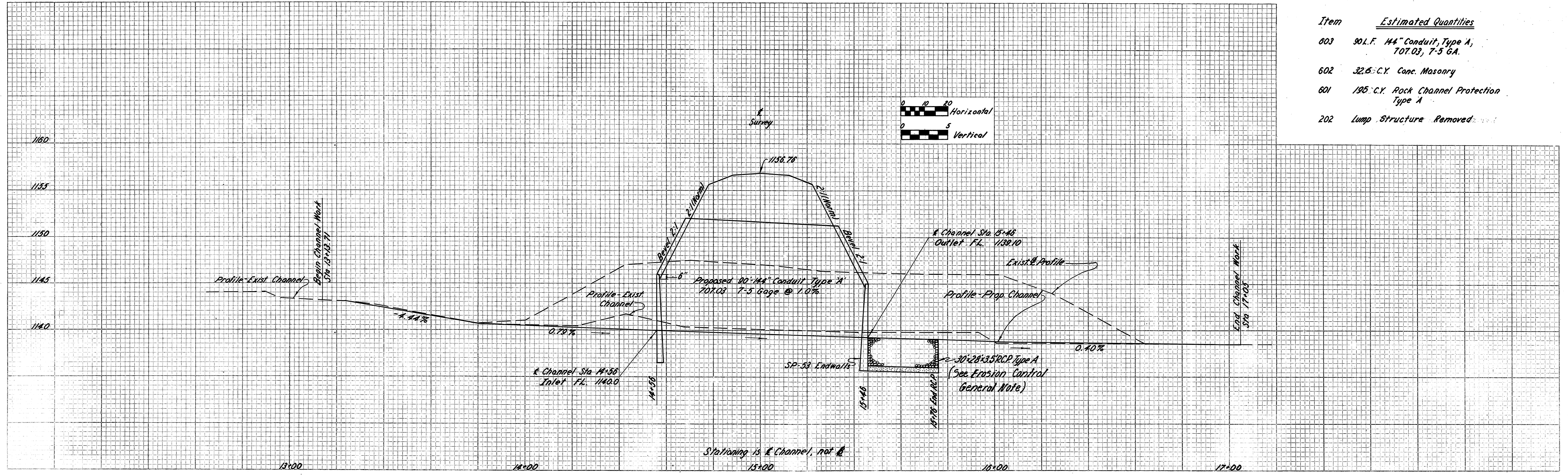
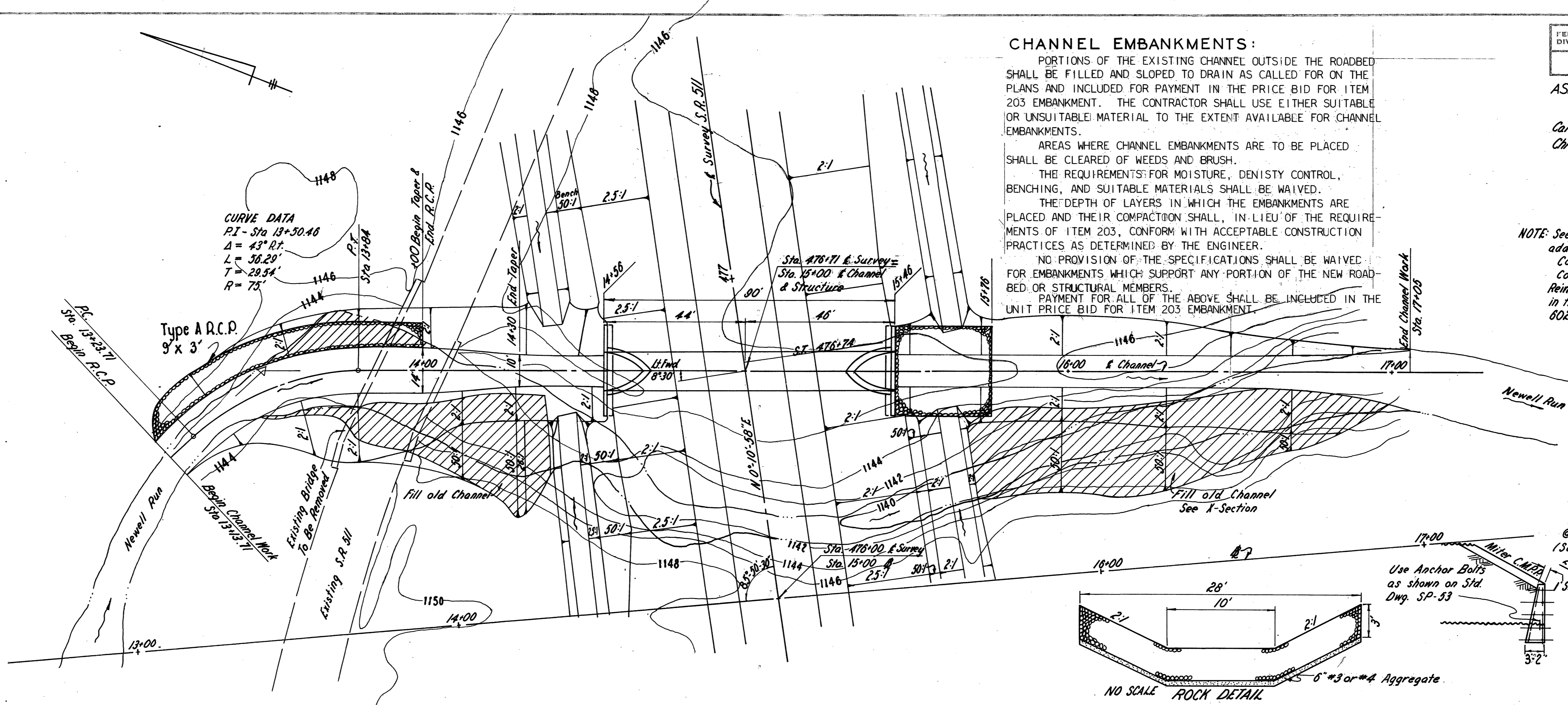
Existing Bridge Data
ASD-511-0907

Type: Steel Beam
Span: 25'-6"
Roadway: 19'-6"
Skew: 0°
Alignment: 10° R.C. Rear - 4° L.C. Fwd.
Loading: S-15.6-46
Substructure: Stone & Conc. Gravity
Wearing Surface: Bituminous
Condition: Fair
To be removed

Proposed Structure
ASD-511-0903

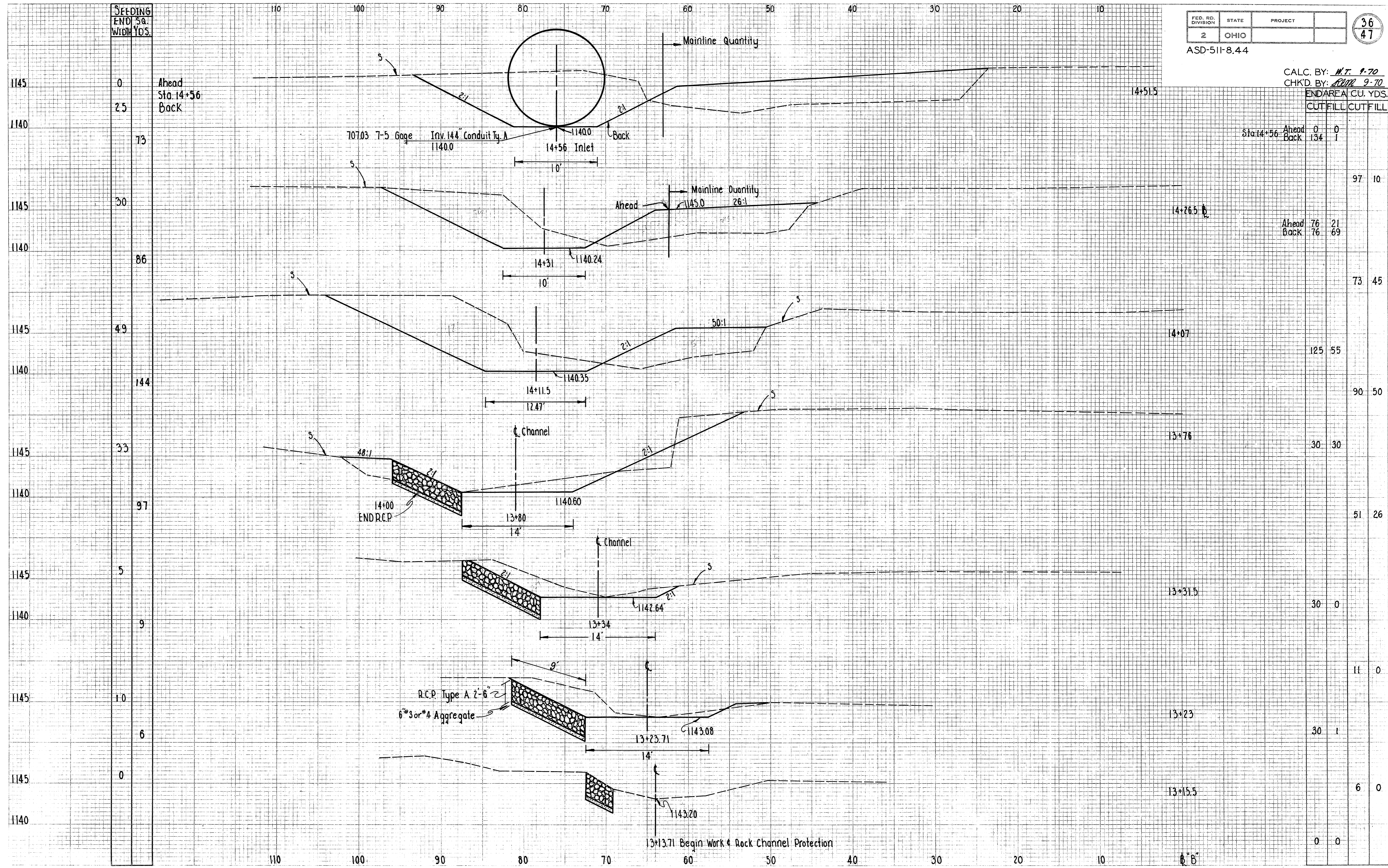
Sta 476+71
90"-144" Type A Conduit, 707.03
7-5 Gage
Skew: 8°30' Lt. Fwd.
D.A. 3.06 Sq. Mi. Q25-965 C.F.S.

CURVE DATA
P.I. - Sta 13+30.46
Δ = 43° Rt.
L = 56.29'
T = 29.54'
R = 75'



Item	Estimated Quantities
603	901.5' 144" Conduit, Type A, 707.03, 7-5 GA.
602	32.6 C.Y. Conc. Masonry
601	195 C.Y. Rock Channel Protection Type A
202	Lump Structure Removed

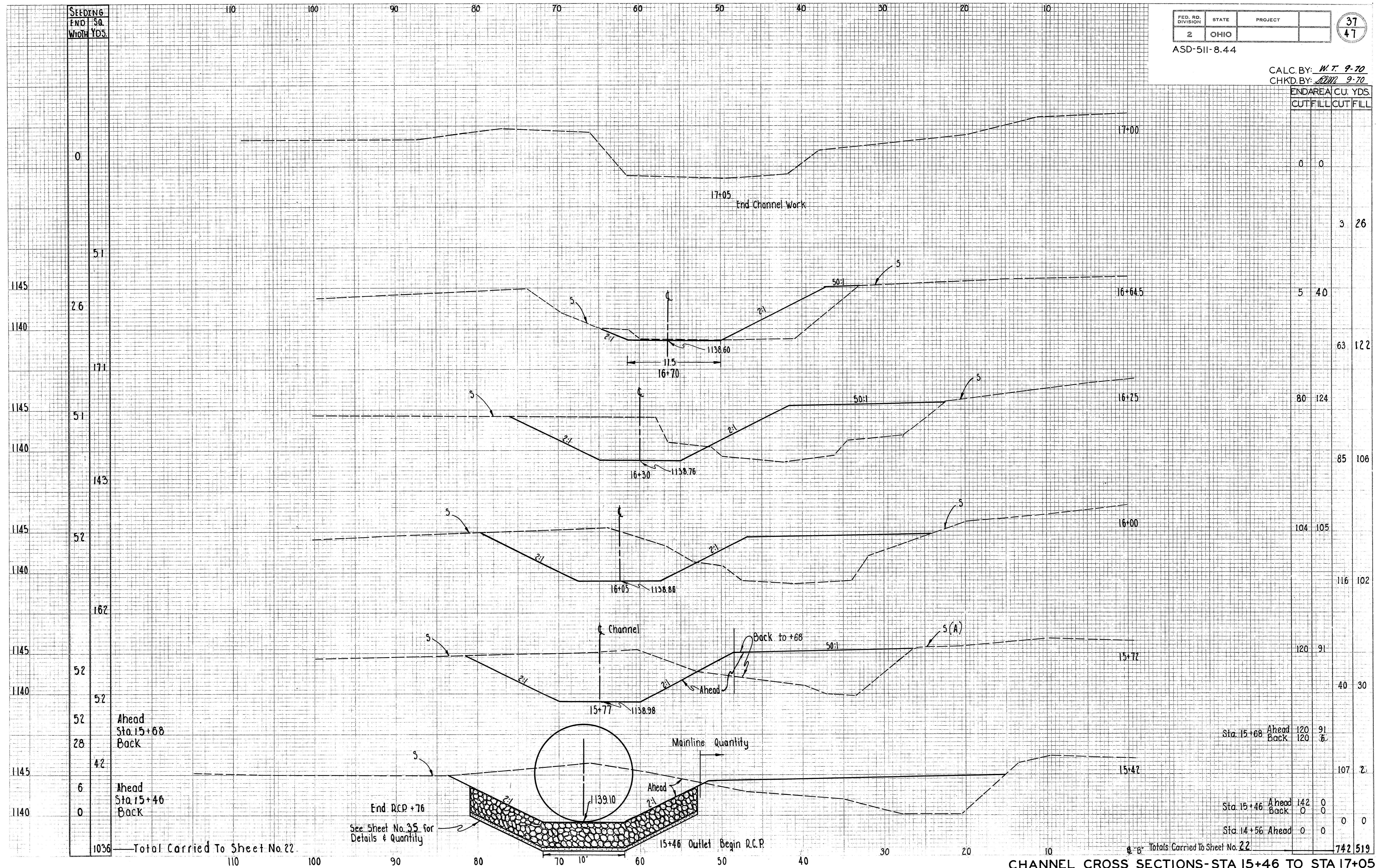
CALC. BY: *M.T. 9-70*
CHKD. BY: *RCM 9-70*



Station	Ahead	Back	END AREA	CUT	FILL	CUT	FILL
Sta. 14+56	0	0	134	0	1		
	76	76		21	69		
				97	10		
				73	45		
				125	55		
				90	50		
				30	30		
				51	26		
				30	0		
				11	0		
				30	1		
				6	0		
				0	0		

CHANNEL CROSS SECTIONS - STA 13+371 TO STA 14+56

CALC. BY: *M.T. 9-70*
CHKD. BY: *MM 9-70*



END AREA	CUT	FILL	CUT	FILL
0	0	0	0	0
5	40	63	122	26
80	124	85	106	
104	105	116	102	
120	91	40	30	
120	91	120	36	
142	0	0	0	
0	0	0	0	
Totals Carried To Sheet No. 22				742 519

SEEDING END SQ. WIDTH YDS.

0

51

26

171

51

143

52

162

52

28

42

6

0

1036

Ahead Sta. 15+68
Back

Ahead Sta. 15+46
Back

Total Carried To Sheet No. 22

End R.C.P. +76
See Sheet No. 35 for
Details & Quantity

Mainline Quantity

Totals Carried To Sheet No. 22

CHANNEL CROSS SECTIONS-STA 15+46 TO STA 17+05

ASHLAND COUNTY VERMILLION TOWNSHIP T-2IN R-16W SEC.5

STATE JOB NUMBER	FED. RD. DIVISION	STATE	PROJECT
03971	2	OHIO	

41
47

ASD- 511 - 8.56

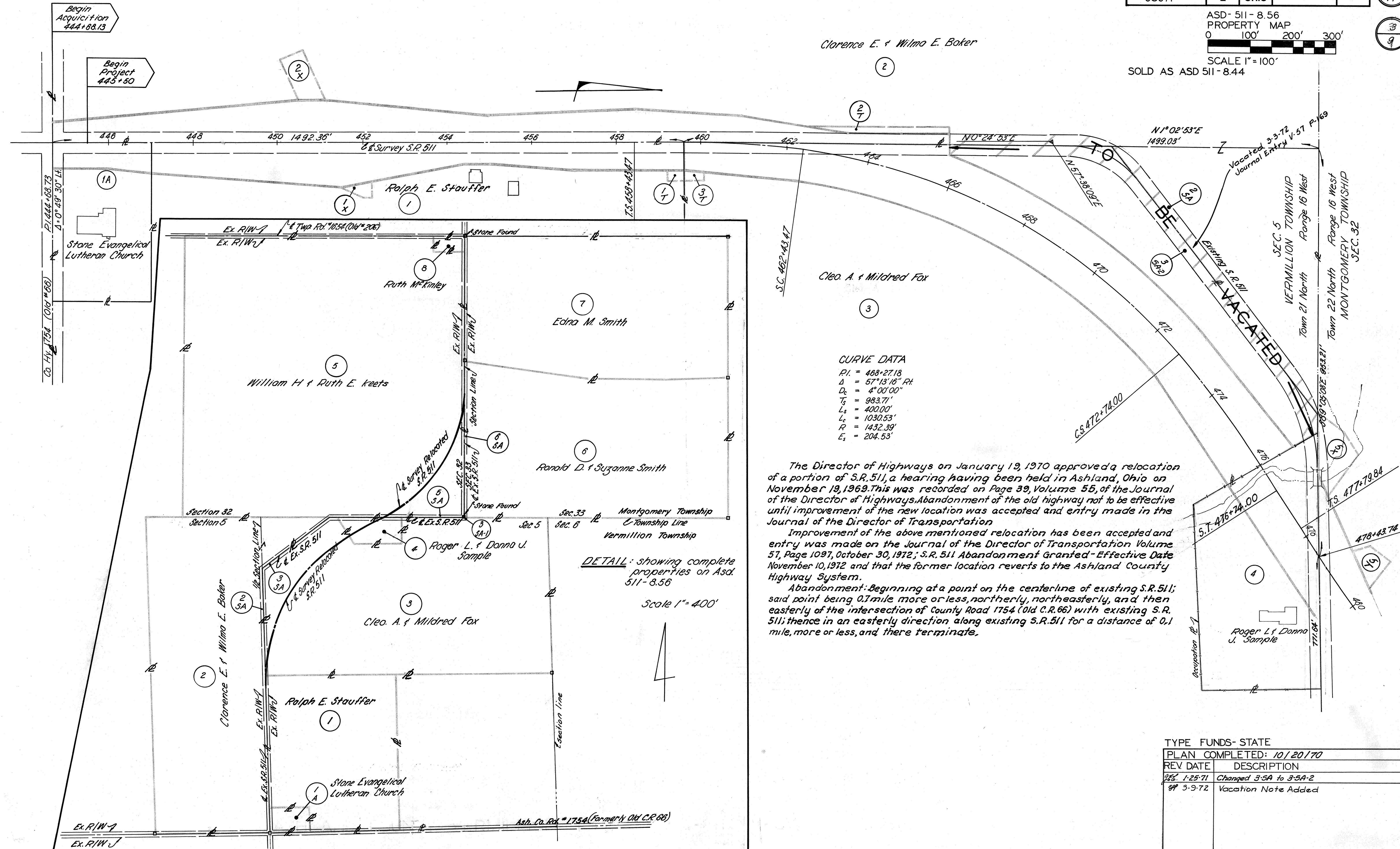
PROPERTY MAP

0 100' 200' 300'

SCALE 1" = 100'

SOLD AS ASD 511-8.44

3
9



CURVE DATA

PI	= 468+27.18
Δ	= 57°13'18" Pt
D _c	= 4°00'00"
T _s	= 983.71'
L _s	= 400.00'
L _c	= 1030.53'
R	= 1432.39'
E _s	= 204.53'

The Director of Highways on January 13, 1970 approved a relocation of a portion of S.R. 511, a hearing having been held in Ashland, Ohio on November 13, 1969. This was recorded on Page 39, Volume 55, of the Journal of the Director of Highways. Abandonment of the old highway not to be effective until improvement of the new location was accepted and entry made in the Journal of the Director of Transportation.

Improvement of the above mentioned relocation has been accepted and entry was made on the Journal of the Director of Transportation Volume 57, Page 1097, October 30, 1972; S.R. 511 Abandonment Granted - Effective Date November 10, 1972 and that the former location reverts to the Ashland County Highway System.

Abandonment: Beginning at a point on the centerline of existing S.R. 511; said point being 0.1 mile more or less, northerly, northeasterly, and then easterly of the intersection of County Road 1754 (Old C.R. 66) with existing S.R. 511; thence in an easterly direction along existing S.R. 511 for a distance of 0.1 mile, more or less, and there terminate.

DETAIL: showing complete properties on ASD 511-8.56

Scale 1" = 400'

TYPE FUNDS- STATE

PLAN COMPLETED: 10/20/70	
REV DATE	DESCRIPTION
1-25-71	Changed 3-5A to 3-5A-2
3-9-72	Vacation Note Added

STATE	FED. RD. DIVISION	STATE	PROJECT
OHIO	2	OHIO	

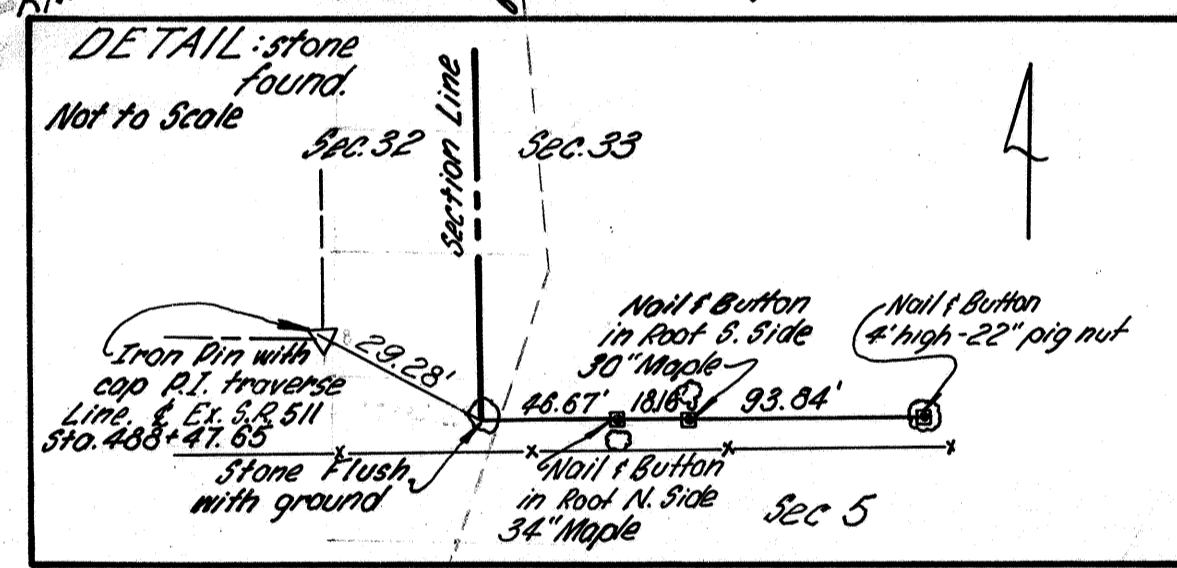
45
47

ASD-511-8.56
RIGHT OF WAY PLAN
0 50 100
SCALE 1" = 50'
SOLD AS ASD511-8.44

7
9

Area to be Vacated
2.5A 0.62 Ac.
3.5A.2 0.76 Ac.
Total 1.38 Ac

CURVE DATA & Survey S.R. 511 (Re. Doc.)
P.I. Sta. 437+47.11
Δ = 56°12'20"
D_c = 4°
L_s = 400.00'
T_s = 967.27'
E_s = 196.71'
X_c = 399.22'
Y_c = 18.59'
L_c = 1005.14'
G_s = 8°
R = 1432.39'



CURVE DATA & Survey S.R. 511
P.I. Sta. 408+27.18
Δ = 57°13'16" Pt.
D_c = 4°
L_s = 400.00'
T_s = 983.71'
E_s = 204.53'
X_c = 399.22'
Y_c = 18.59'
L_c = 1030.53'
G_s = 8°
R = 1432.39'

TYPE FUNDS - STATE	
PLAN COMPLETED: 10/20/70	
REV DATE	DESCRIPTION
REV. 1-25-71	Changed 3-5A to 3-5A.2
NOTE 3-2-71	Changed location of ST & location of drive at ST
NOTE 3-5-71	Added 3' F.T. Approx Sta 485+20.53, Added 6' F.T. Approx Sta 485+00.14
SP 3-9-72	Vacation Note Added

Area to be Vacated
3.5A.1 0.06 Ac.
5.5A 0.94 Ac.
6.5A 0.08 Ac.
Total 1.08 Ac.

ASHLAND COUNTY MONTGOMERY TOWNSHIP T-22N R-16W SEC.32
VERMILLION TOWNSHIP T-21N R-16W SEC.5