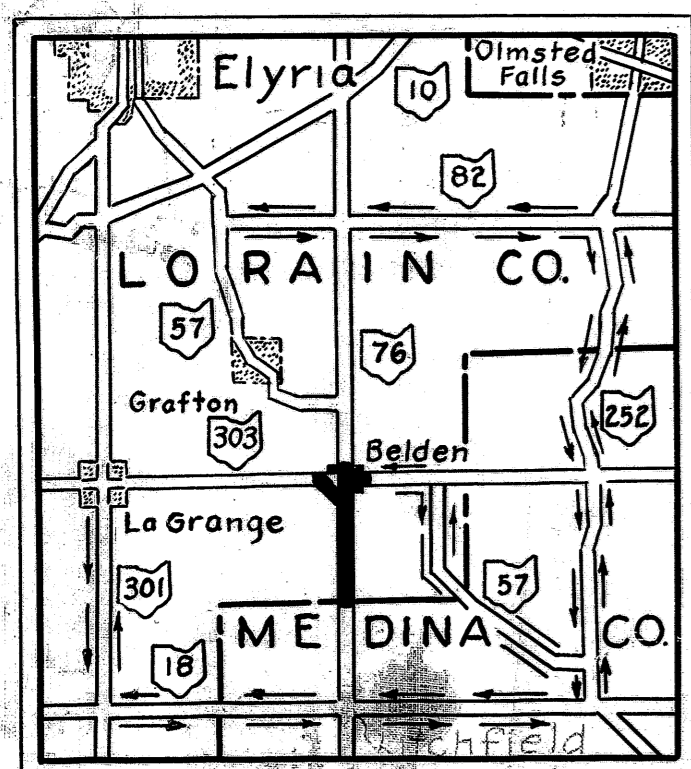


STATE OF OHIO
DEPARTMENT OF HIGHWAYS

FED. RD. DIVISION	STATE	PROJECT
2	OHIO	S-56-4(7) S-50(7)

LOR-76-0.00; MED-76-15.08
LOR-303-(16.40-16.63) (16.69)
LORAIN COUNTY; MEDINA COUNTY



No PID
C No. 610225

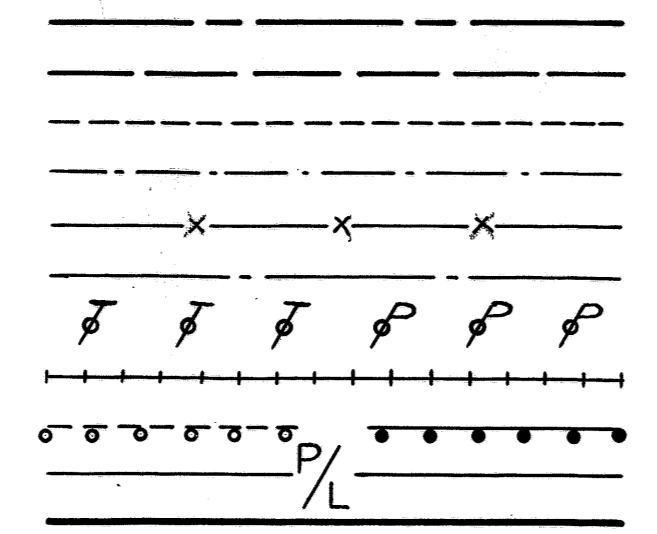
LOR-76-0.00; MED-76-15.08 S-SG-4(7)
LOR 303-(16.40-16.63) (16.69) S-50(7)

JAN 20 1961
GROUND PHOTOLAB

RECONSTRUCTION OF EXISTING SEPARATED CROSSING WITH THE BALTIMORE & OHIO RAILROAD CO.
GRAFTON TOWNSHIP, LORAIN COUNTY; LITCHFIELD TOWNSHIP, MEDINA COUNTY

CONVENTIONAL SIGNS

- COUNTY LINE
- TOWNSHIP LINE
- SECTION LINE
- CORPORATION LINE
- FENCE LINE
- CENTER LINE
- POLE LINE (TELEPHONE & POWER)
- RAILROAD
- GUARD RAIL (EXISTING & PROPOSED)
- PROPERTY LINE
- RIGHT OF WAY



INDEX OF SHEETS

TITLE SHEET	1	PLAN AND PROFILE SHEETS	8-21
TYPICAL SECTIONS	2-3	CROSS-SECTIONS	22-52
SPECIAL CONSTRUCTION DETAILS	3	INTERSECTIONS AND S.R.303	53-59
SUPERELEVATION TABLES	4	STRUCTURES OVER 20FT. SPAN	60-72
SCHEMATIC LAYOUT	4	RIGHT-OF-WAY PLANS	73-83
GENERAL NOTES	5	REFERENCE MONUMENTS	73-74
SUMMARY OF QUANTITIES	6-7		

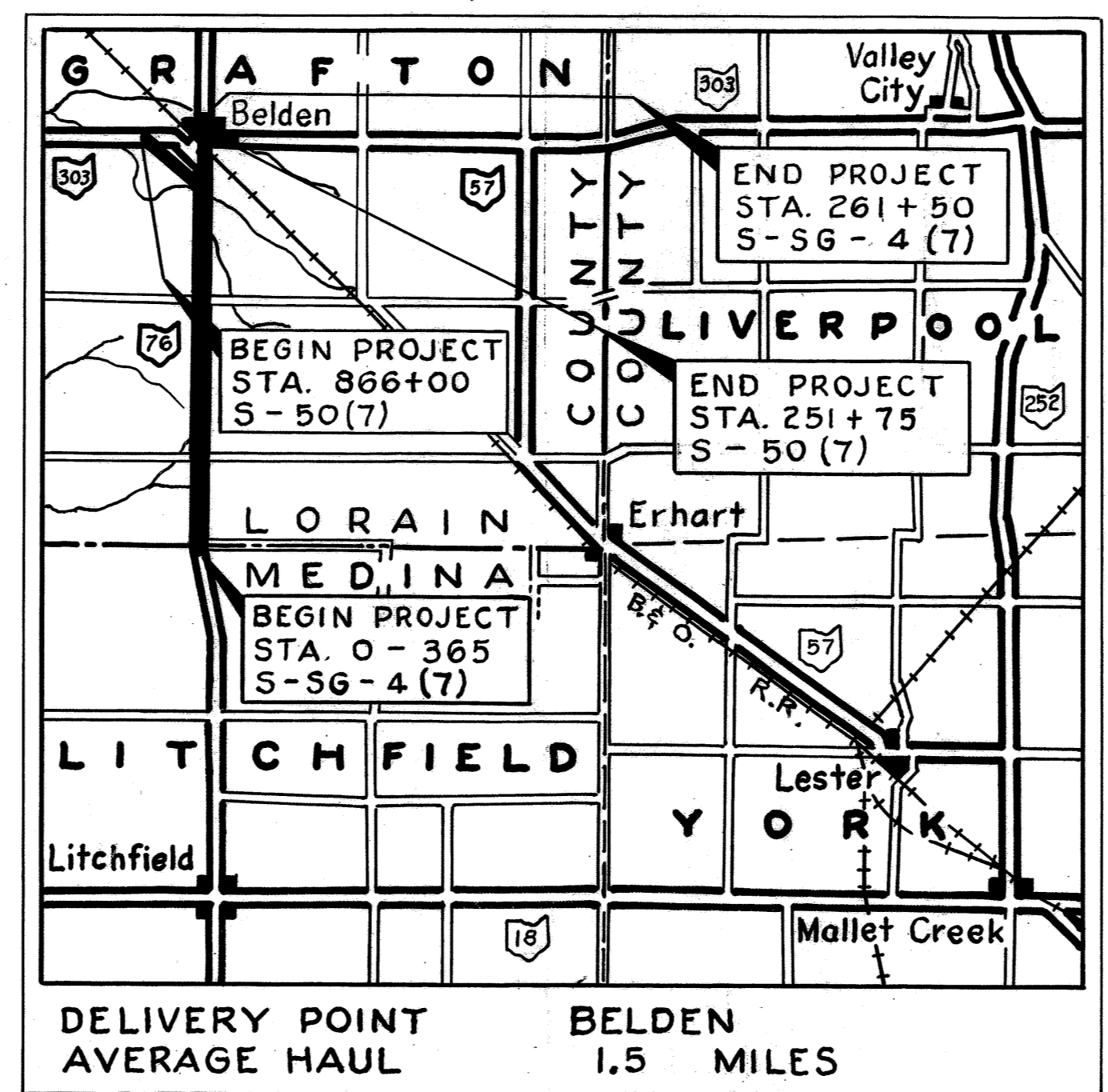
LINE DATA

LOR-76-0.00 ; MED-76-15.08 S-SG-4(7)
PROJECT WORK
BEGIN (S) STA. 0-365 STA. 0-415
END (S) STA. 127+00 STA. 127+00
NO ADDITIONS OR DEDUCTIONS
NET LENGTH 13,065 LIN. FT. 13,115 LIN. FT.
OR 2.474 MILES OR 2.483 MILES
BEGIN (S) STA. 127+00 STA. 127+00
END (S) STA. 261+50 STA. 262+00
EQUATION STA. 137+81.19 = STA. 257+75.78
NET LENGTH 1455.41 LIN. FT. 1505.41 LIN. FT.
OR 0.275 MILES OR 0.285 MILES
TOTAL NET 14520.41 LIN. FT. 14,620.41 LIN. FT.
LENGTH [S-SG] OR 2.750 MILES OR 2.769 MILES

LOR-303-(16.40-16.63) (16.69) S-50(7)
BEGIN STA. 866+00 STA. 865+50
SUSPEND STA. 878+09.98 STA. 878+09.98
RESUME STA. 257+63.78 STA. 257+63.78
END STA. 251+75 STA. 249+20
NO ADDITIONS OR DEDUCTIONS
NET LENGTH 1798.76 LIN. FT. 2103.76 LIN. FT.
0.340 MILES 0.398 MILES

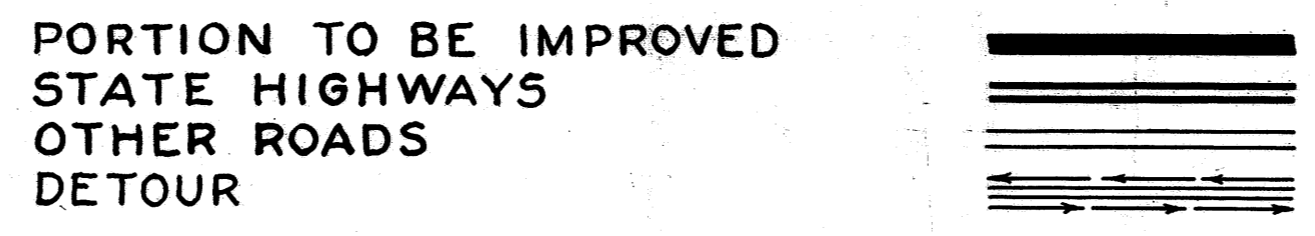
TOTAL NET LENGTH PROJECT WORK
FOR S-SG-4(7) & S-50(7) 3,090 MILES. 3,167 MILES.

Substituted Sheet G2A
for Sheet G2 G-1-G1.
Sheet G1 revised G-1-G1.
Sheets G3, G4, G5, G8, G9,
70, 71 and 72 revised G-1-G1.



LOCATION MAP

Scale 1 in. = 1 mi.



SCALES

- PLAN 1" = 50'
- PROFILE HORIZONTAL 1" = 50'
- PROFILE VERTICAL 1" = 5'
- CROSS SECTIONS 1" = 5'
- OTHER SHEETS AS SHOWN

The Standard Specifications of the State of Ohio, Department of Highways, including changes and supplemental specifications in the proposal shall govern this improvement

The right of way for this improvement will be provided by the State of Ohio

I hereby approve these plans and declare that the making of this improvement will require the closing to traffic of the highways, except as noted on Sheet No. 5, and that detours will be provided as indicated on the plans. Provisions for the maintenance and safety of traffic will be as indicated on these plans and estimates.

- Approved E. L. Johnson
Date 12-18-59 Division Deputy Director
- Approved Sam E. Yeager
Date 3-31-61 Deputy Director of Planning and Programming
- Approved J. J. ...
Date 3-24-61 Engineer of Bridges
- Approved W. J. ...
Date 3-28-61 Engineer of Location and Design
- Approved C. W. McCaughey
Date 7-28-61 Deputy Director of Design and Construction
- Approved W. J. ...
Date 3-27-61 Deputy Director of Right of Way
- Approved Ed Berry
Date 3-31-61 First Assistant Director
- Approved Ed ...
Date 4-3-61 Director of Highways

1959 SPECIFICATIONS

JAN 20 1961
GROUND PHOTOLAB

STANDARD CONSTRUCTION DRAWINGS			
G-707	6-1-56	I-15 No. 4	12-1-54
I-1,2,3,4 & 5	4-24-58	L-1	4-1-50
I-8CB 2-2A & B	3-2-59	L-3	4-1-50
I-8CB 2-3 & 2-4	1-26-59	L-3-A	4-1-50
I-8CB No. 5	7-1-58	RI-1	7-15-58
I-8 I No. 1	3-2-59	S-27 PC-3	2-20-45
I-12	7-1-54	S-27 PC-4	1-4-54
I-15 No. 1	5-21-59	T-35	1-2-56
I-15 No. 2	8-17-60	SP-53	11-25-58

SUPPLEMENTAL SPECIFICATIONS			
S-101	12-2-59		
S-103	Rev 2-16-55		
S-107	Rev 2-16-55		
S-207	4-28-55		

FILE No. 226-L	LOR-76-0.00 ; MED-76-15.08 LOR-303-(16.40-16.63) (16.69) LORAIN COUNTY; MEDINA COUNTY DATE OF LETTING CONTRACT No.
----------------	--

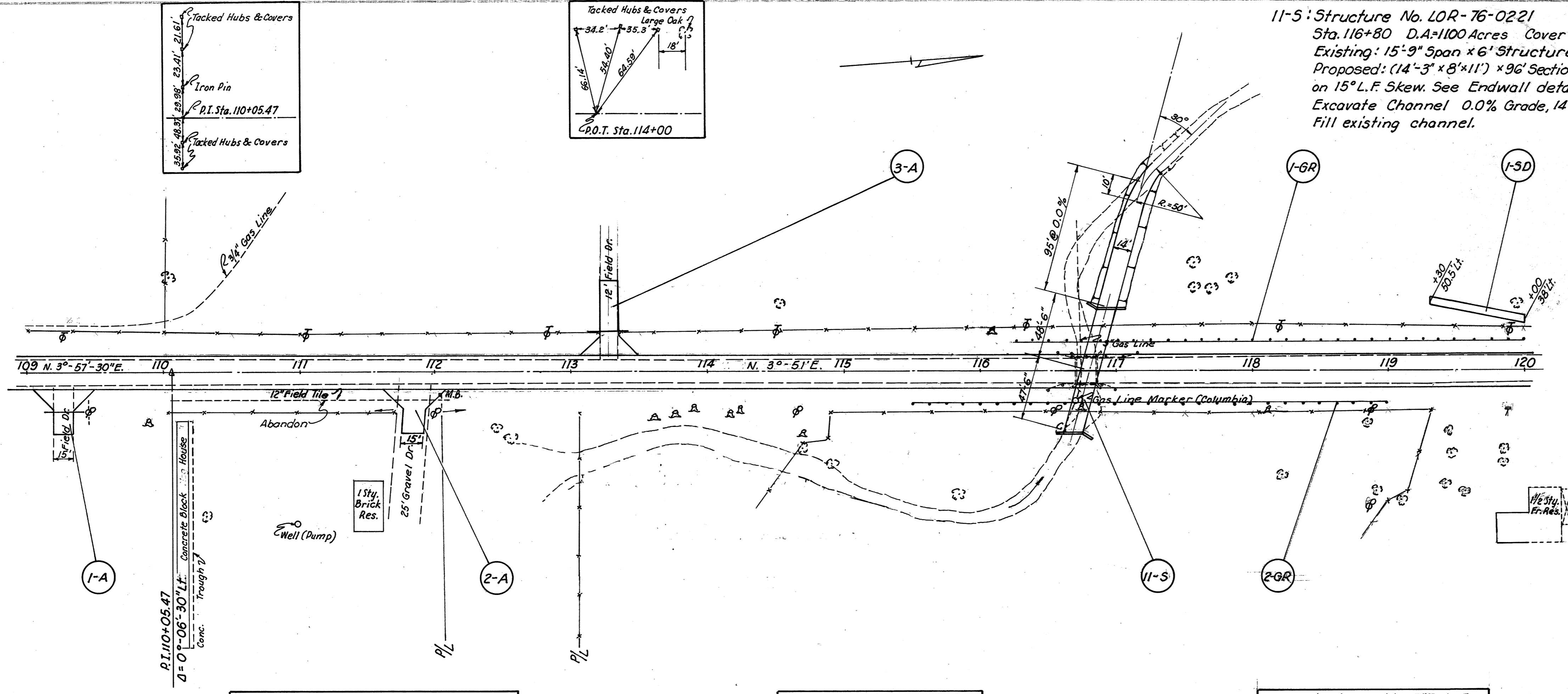
DEPARTMENT OF COMMERCE
BUREAU OF PUBLIC ROADS

APPROVED:

DIVISION ENGINEER DATE

LOR-76-0.00 ; MED-76-15.08
LOR-303-(16.40-16.63)-(16.69)

11-5: Structure No. LOR-76-0221
Sta. 116+80 D.A.=1100 Acres Cover @ 6.3'
Existing: 15'-9" Span x 6' Structure to be removed.
Proposed: (14'-3" x 8' x 11') x 9G' Sectional Corrugated Metal Pipe Arch (7-5ga)
on 15° L.F. Skew. See Endwall details below.
Excavate Channel 0.0% Grade, 14' bottom and 2:1 Slopes, on Lt. as indicated.
Fill existing channel.



Ref. No.	Station	T-35 Asphaltic Concrete Surface Course Cu.Yds.	B-19 Aggregate Base Course Cu.Yds.	I-1 Pipe for Driveways Lin.Ft.	I-15 Guard Rail Steel Beam Type Shallow Lin.Ft.	L-10 Socking 6' Wide Sq.Yds.
1-A	109+27 Rt. L=33'			14.0	28	
2-A	111+83 Rt. L=33'	4.5	11.7			
3-A	113+28 Lt. L=55'			16.4	30	
1-GR	116+25 to 120+00 Lt.					375
2-GR	115+50 to 119+00 Rt.					350
1-SD	119+30 to 120+00 Lt.					47
TOTAL		4.5	42.1	58	725	47

W = 15'

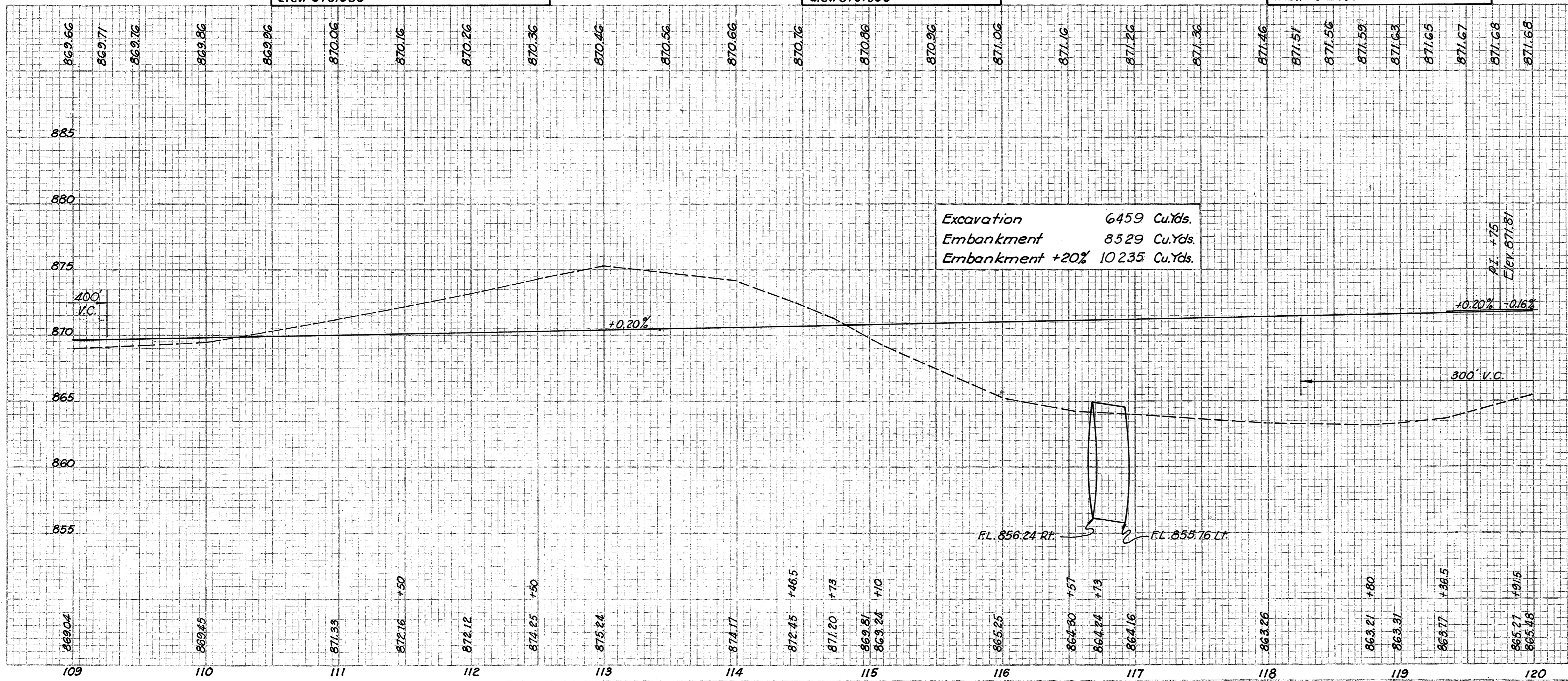
Ref. No.	Station	E-2 Excavation for Structures Cu.Yds.	E-3 Channel Excavation Cu.Yds.	S-1 Concrete for Structures Class "E" Cu.Yds.	S-4 Reinforcing Steel Lbs.	S-24 Removal of Existing Structures Lump Sum	S-28 Sectional Corrugated Metal Pipe 14'-3" x 8'-11" Lin.Ft.	I-15 Guard Rail Removed & Disposed of Lin.Ft.
11-5	116+80	95	435	22.6	481	1	96	118*
TOTAL		95	435	22.6	481	1	96	118*

* Steel Beam Type

B.M. Spike in Roof on N.E. Side 17" Hickory
69' Lt. Sta. 110+00
Elev. 875.360

B.M. Spike in E. Side 33" Oak
48' Lt. Sta. 114+51
Elev. 875.335

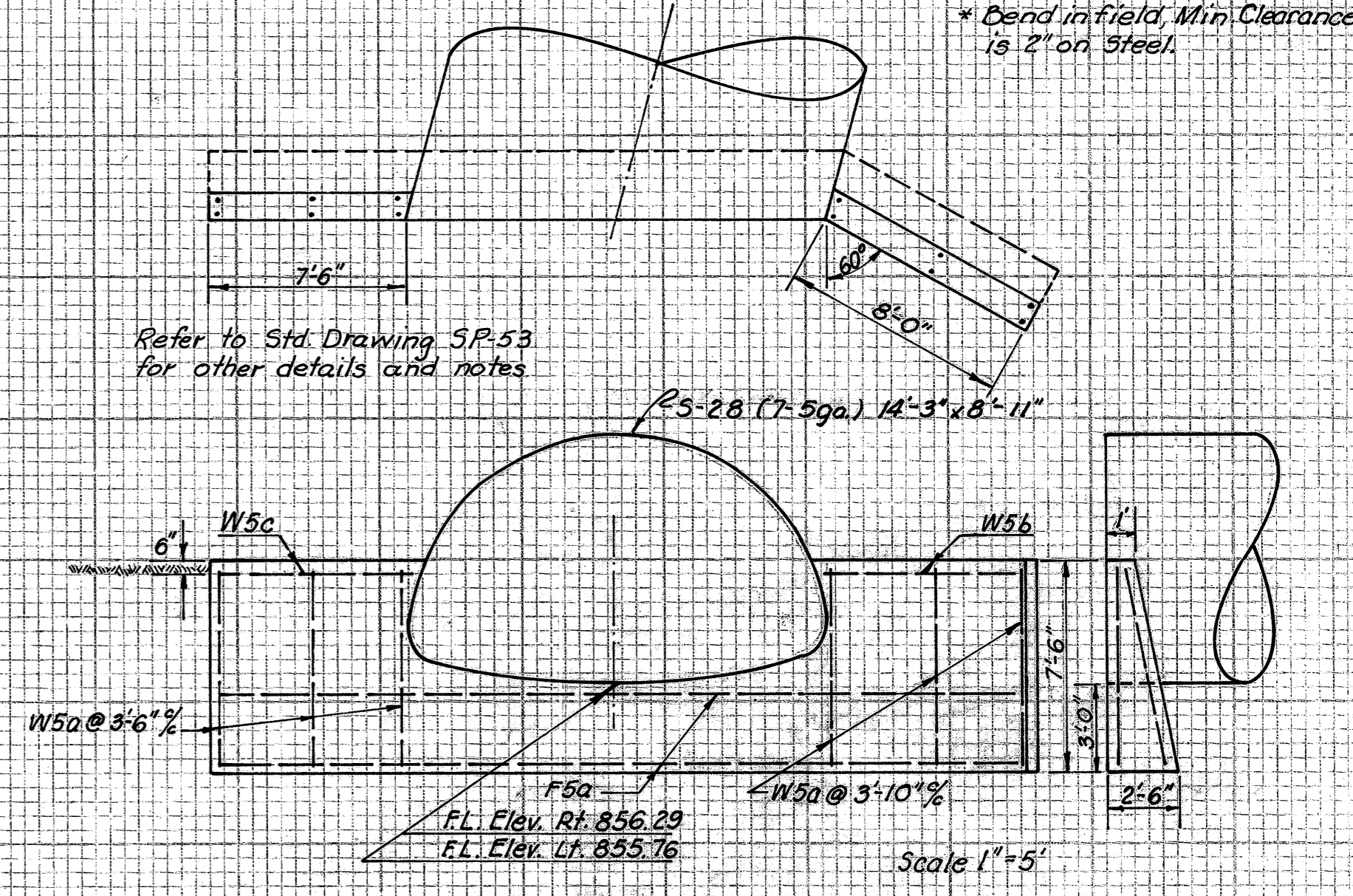
B.M. Spike in W. Side 17" Twin Elm
78' Rt. Sta. 118+20
Elev. 862.260



Excavation 6459 Cu.Yds.
Embankment 8529 Cu.Yds.
Embankment +20% 10235 Cu.Yds.

Mark	No.	Req'd	Size	Length	Weight
F5a	8	5	29'-6"	240	
W5a	24	5	7'-0"	175	
W5b	4	5	7'-6"	31	
W5c	4	5	7'-2"	29	

* Bend in field Min Clearance is 2" on Steel.



END WALL
STA. 116+80

Scale 1"=5'