

**ODOT Dist 4 - Ashtabula County - FINAL**  
**No Passing Zone Log (ATB)**

Route: 0045R (SATBSR00045\*\*C)

Length: 26.374

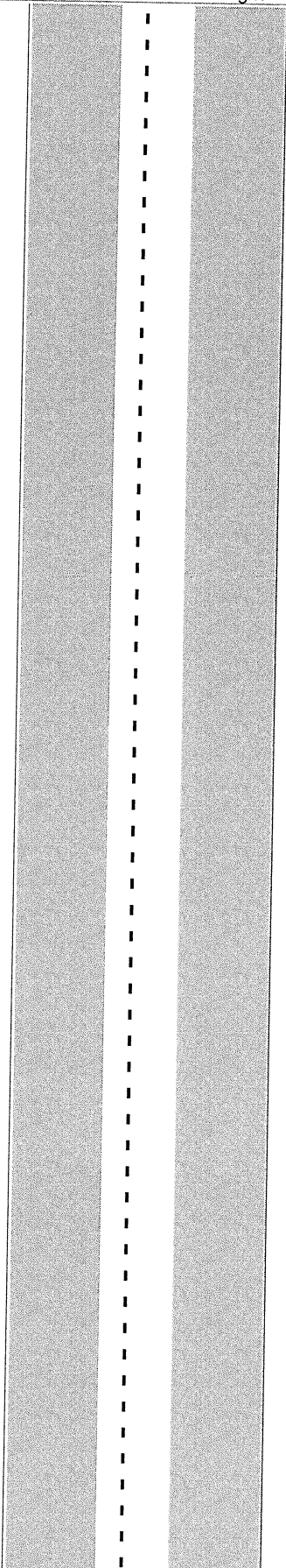
Direction: North

From: 0.000 LEAVE TRU CO

To: 26.374 S0531R

Length	Left	C/L	Right	Length	Control Points
--------	------	-----	-------	--------	----------------

Scale: 1.00 mile/page



0.923 T0565 WINTERS LT

0.000 T0299 RICE LT  
 0.000 LEAVE TRU CO

Sheet total equivalent length of solid line: 0.250

Accum. total: 0.250

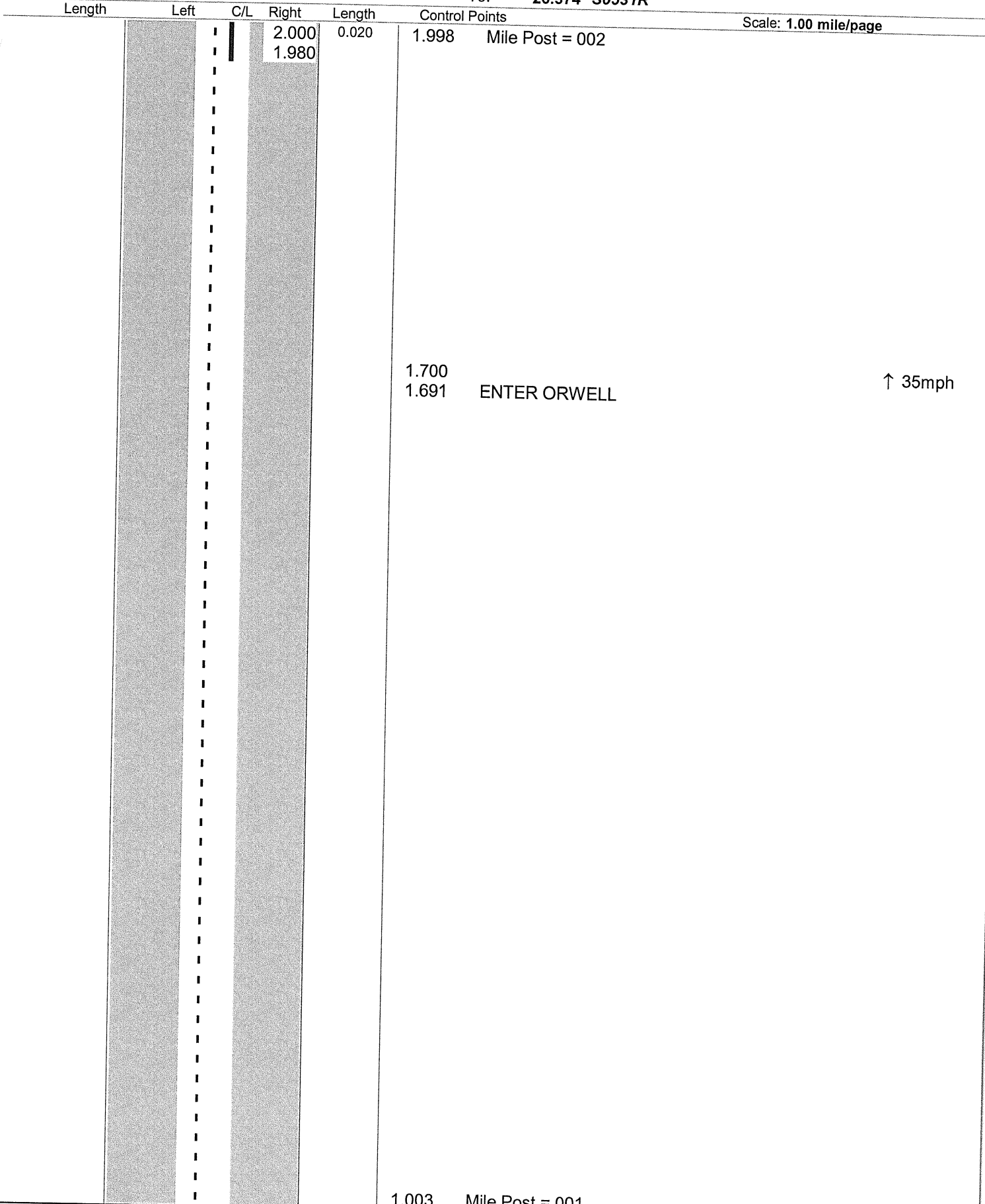
**ODOT Dist 4 - Ashtabula County - FINAL**  
**No Passing Zone Log (ATB)**

Route: **0045R (SATBSR00045\*\*C)**

Length: **26.374** Direction: **North**

From: **0.000 LEAVE TRU CO**

To: **26.374 S0531R**



Sheet total equivalent length of solid line: 0.270

Accum. total: 0.520

ODOT Dist 4 - Ashtabula County - FINAL  
 No Passing Zone Log (ATB)

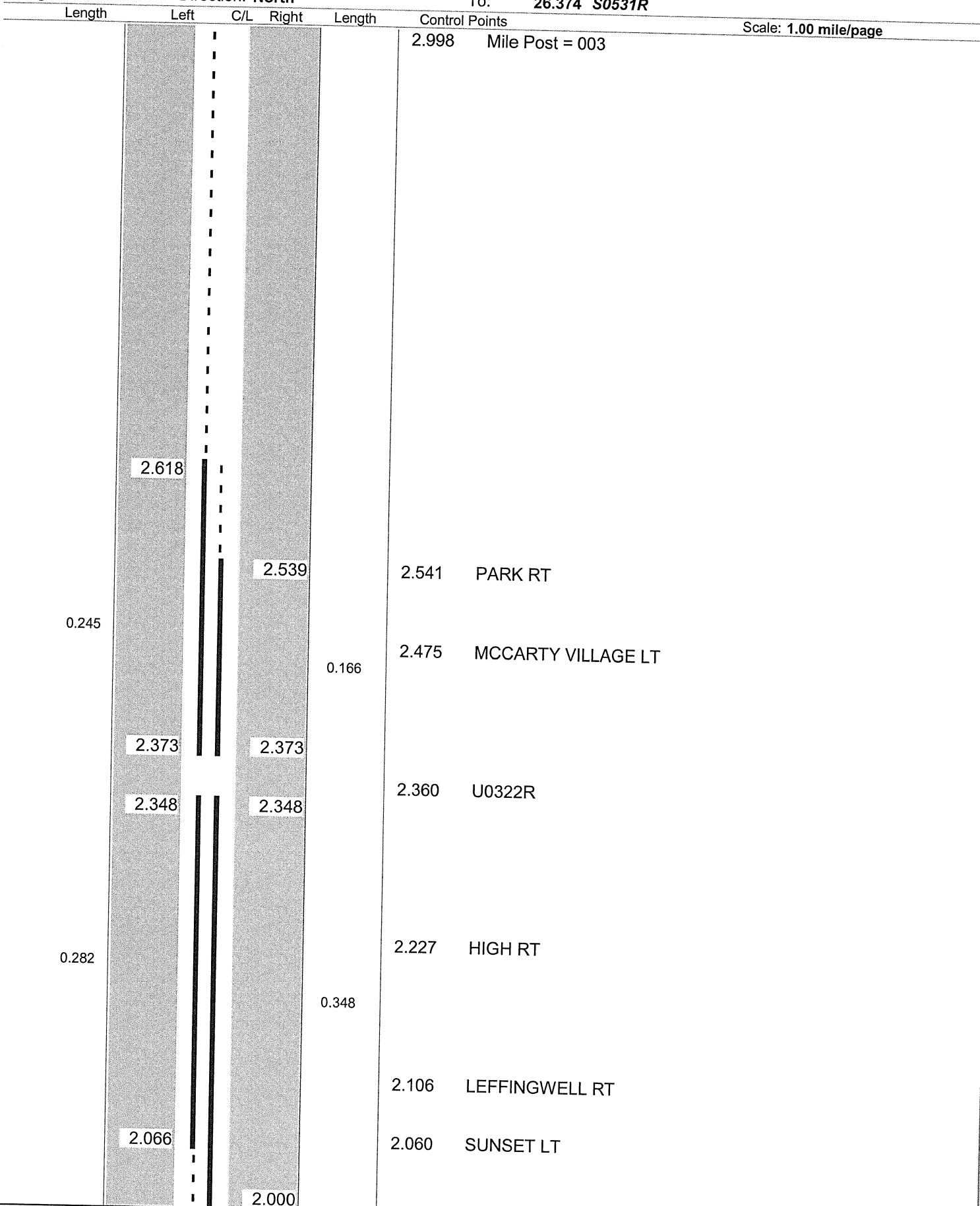
Route: 0045R (SATBSR00045\*\*C)

Length: 26.374

Direction: North

From: 0.000 LEAVE TRU CO

To: 26.374 S0531R



Scale: 1.00 mile/page

Sheet total equivalent length of solid line: 1.173

Accum. total: 1.693

ODOT Dist 4 - Ashtabula County - FINAL  
 No Passing Zone Log (ATB)

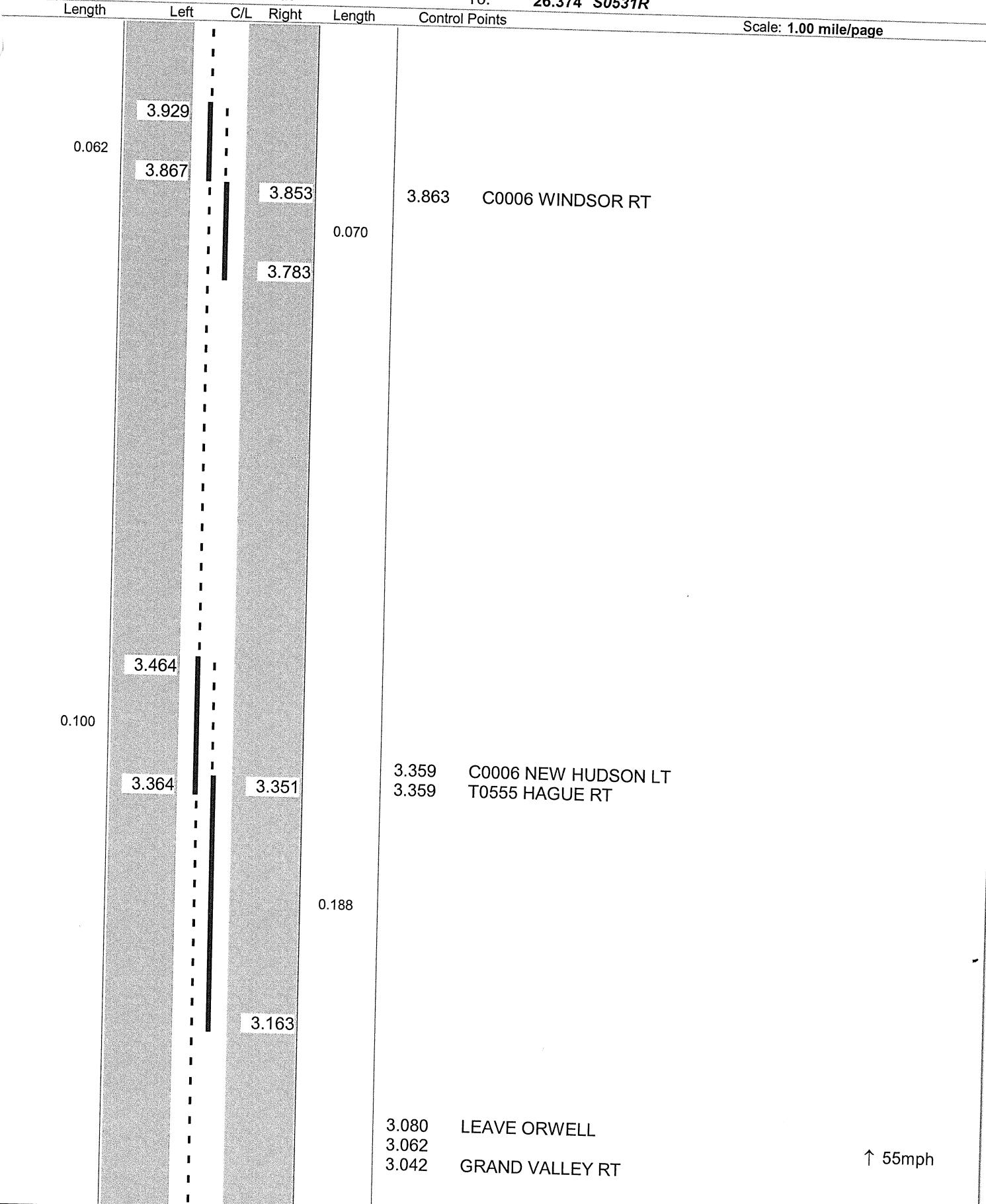
Route: 0045R (SATBSR00045\*\*C)

Length: 26.374

Direction: North

From: 0.000 LEAVE TRU CO

To: 26.374 S0531R



Scale: 1.00 mile/page

↑ 55mph

Sheet total equivalent length of solid line: 0.670

Accum. total: 2.363



ODOT Dist 4 - Ashtabula County - FINAL  
 No Passing Zone Log (ATB)

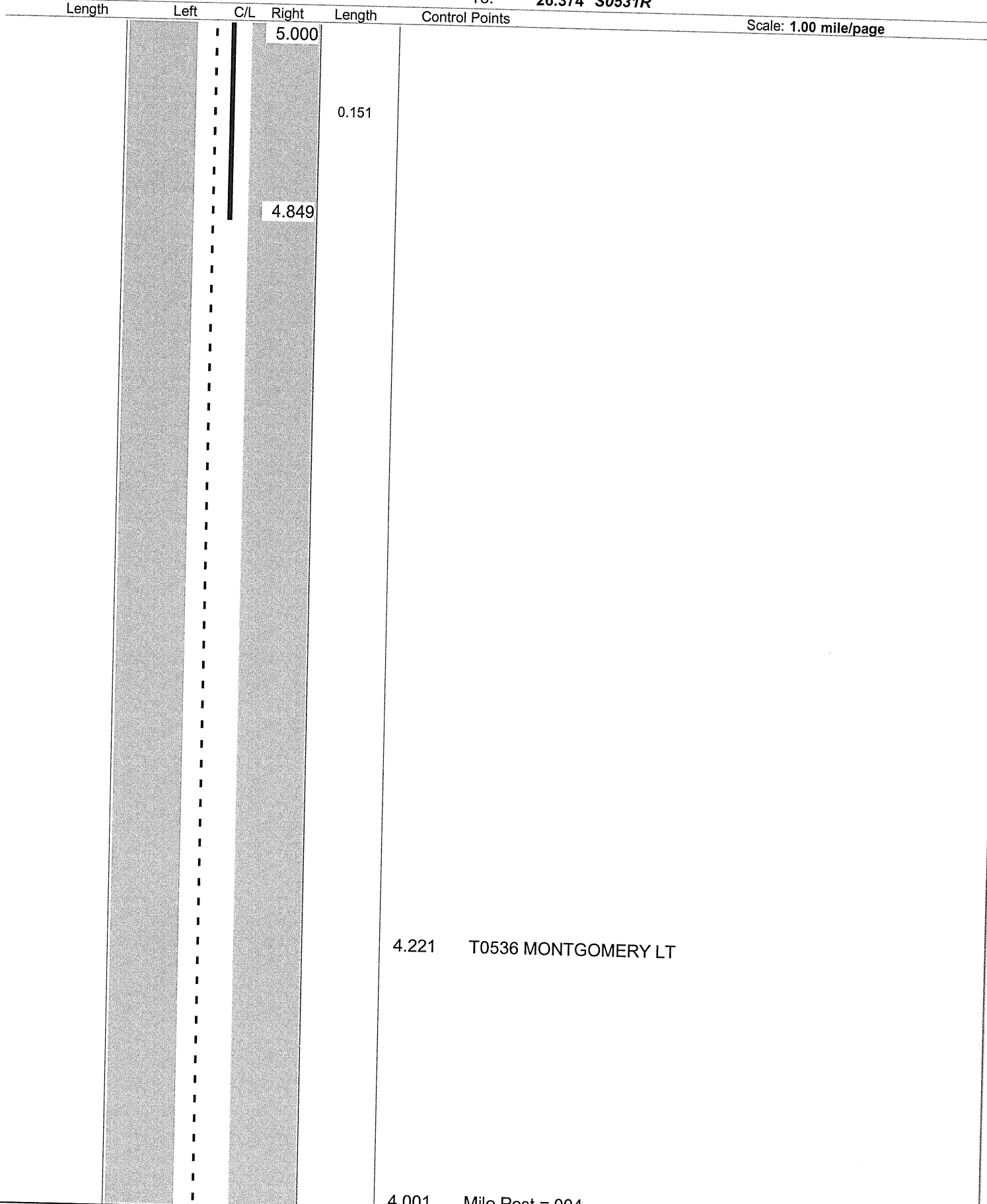
Route: 0045R (SATBSR00045\*\*C)

Length: 26.374

Direction: North

From: 0.000 LEAVE TRU CO

To: 26.374 S0531R



Sheet total equivalent length of solid line: 0.401

Accum. total: 2.764

ODOT Dist 4 - Ashtabula County - FINAL  
 No Passing Zone Log (ATB)

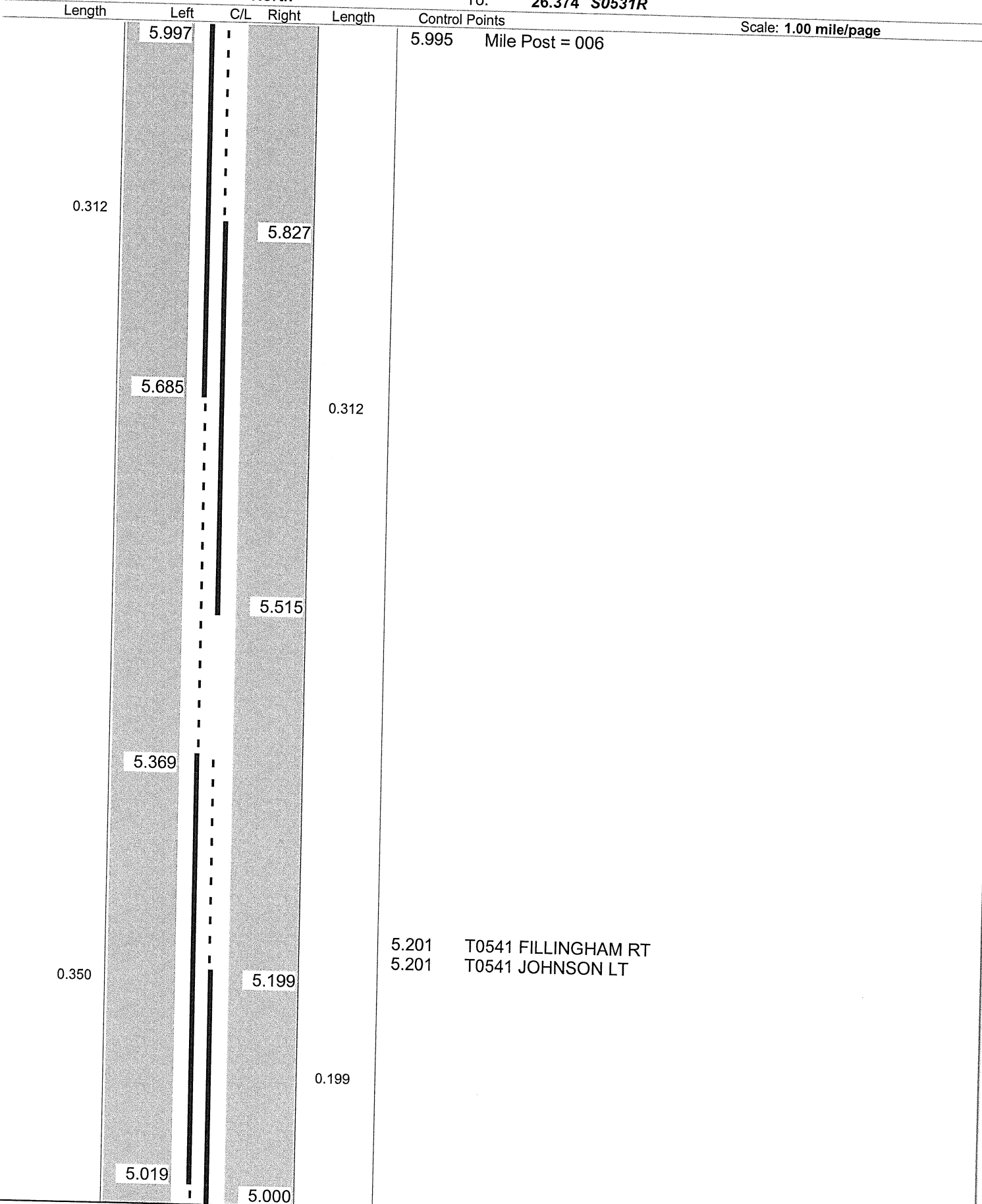
Route: 0045R (SATBSR00045\*\*C)

Length: 26.374

Direction: North

From: 0.000 LEAVE TRU CO

To: 26.374 S0531R



Sheet total equivalent length of solid line: 1.343

Accum. total: 4.107

ODOT Dist 4 - Ashtabula County - FINAL  
 No Passing Zone Log (ATB)

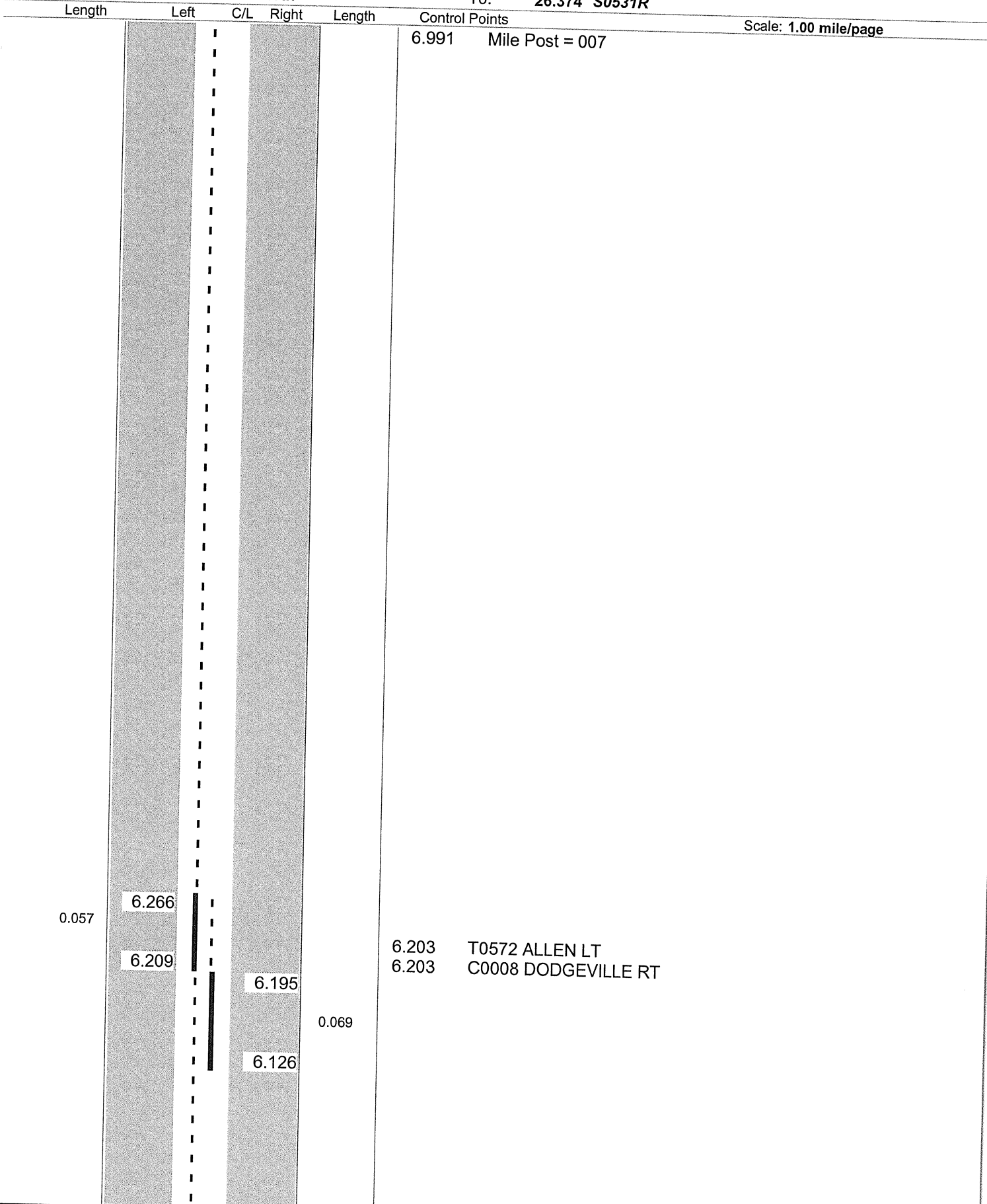
Route: 0045R (SATBSR00045\*\*C)

Length: 26.374

Direction: North

From: 0.000 LEAVE TRU CO

To: 26.374 S0531R



Sheet total equivalent length of solid line: 0.376

Accum. total: 4.483

**ODOT Dist 4 - Ashtabula County - FINAL**  
**No Passing Zone Log (ATB)**

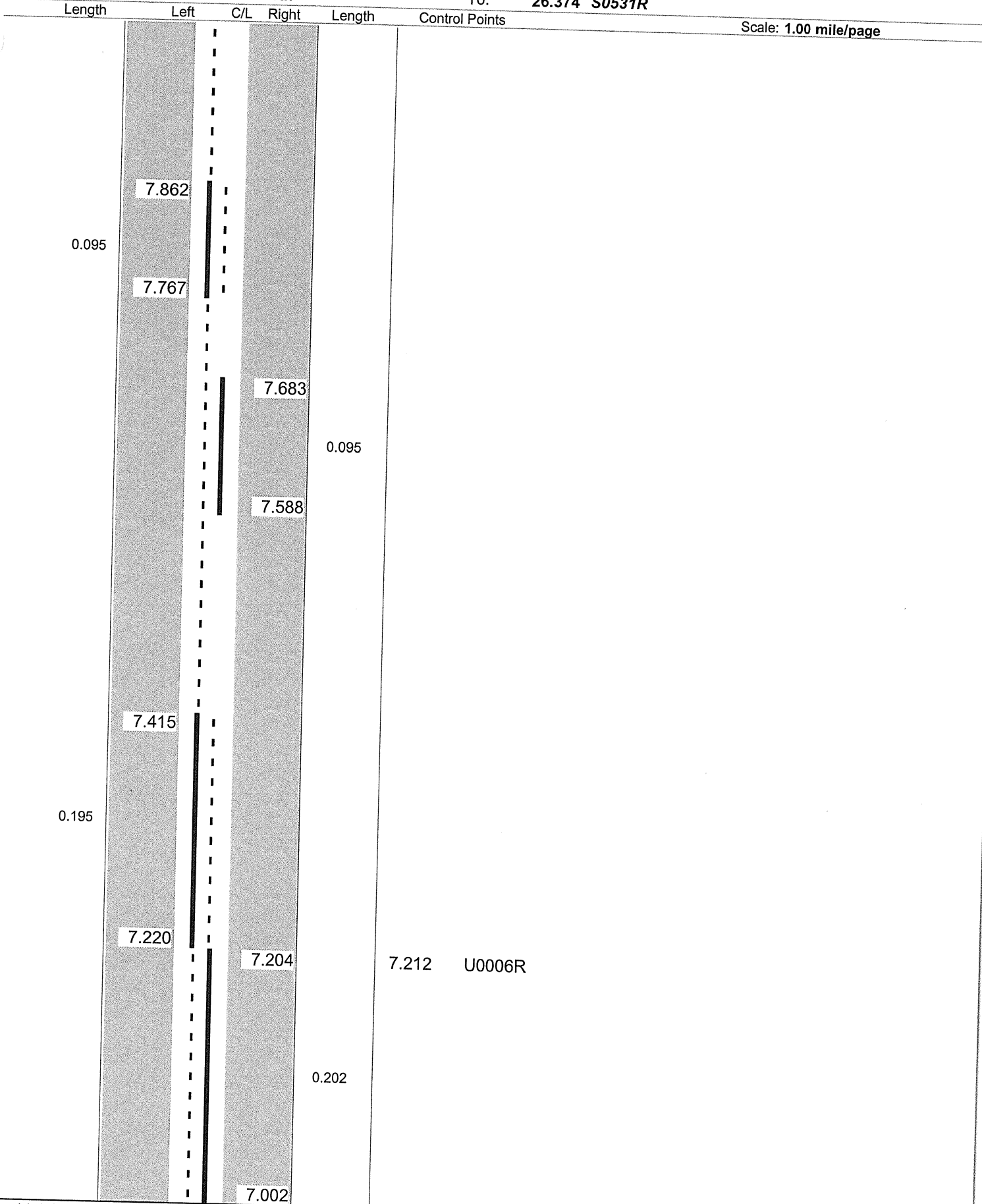
Route: 0045R (SATBSR00045\*\*C)

From: 0.000 LEAVE TRU CO

Length: 26.374

Direction: North

To: 26.374 S0531R



Sheet total equivalent length of solid line: 0.837

Accum. total: 5.320

ODOT Dist 4 - Ashtabula County - FINAL  
 No Passing Zone Log (ATB)

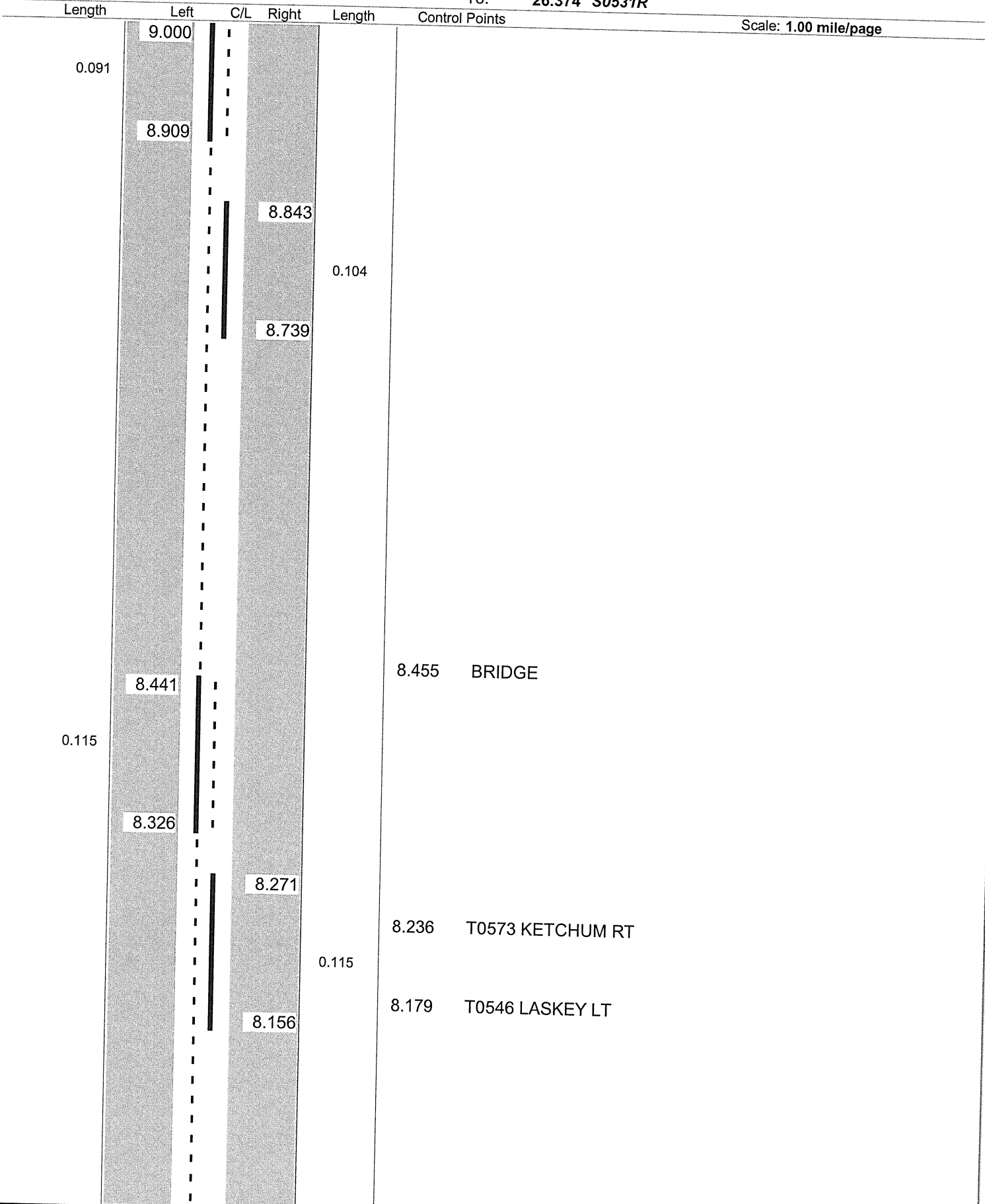
Route: 0045R (SATBSR00045\*\*C)

Length: 26.374

Direction: North

From: 0.000 LEAVE TRU CO

To: 26.374 S0531R



Scale: 1.00 mile/page

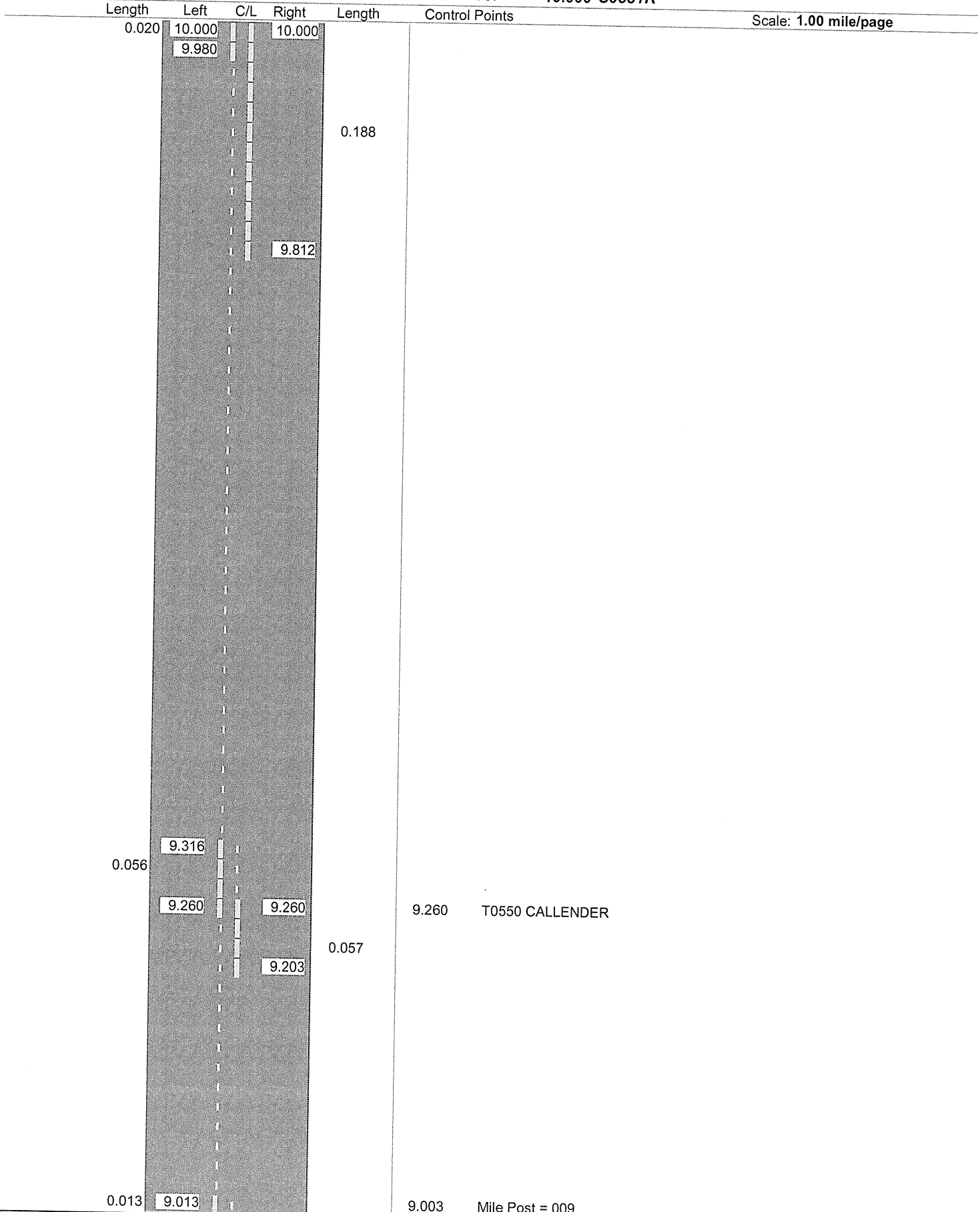
Sheet total equivalent length of solid line: 0.675

Accum. total: 5.995

**ODOT District 4  
No Passing Zone Log (ATB)**

Route: **0045R (SATBSR00045\*\*C)**  
 Length: **1.000** Direction: **North**

From: **9.000 LEAVE TRU CO**  
 To: **10.000 S0531R**



Scale: 1.00 mile/page

Sheet total equivalent length of solid line: 0.579

Accum. total: 0.579

**ODOT Dist 4 - Ashtabula County - FINAL**  
**No Passing Zone Log (ATB)**

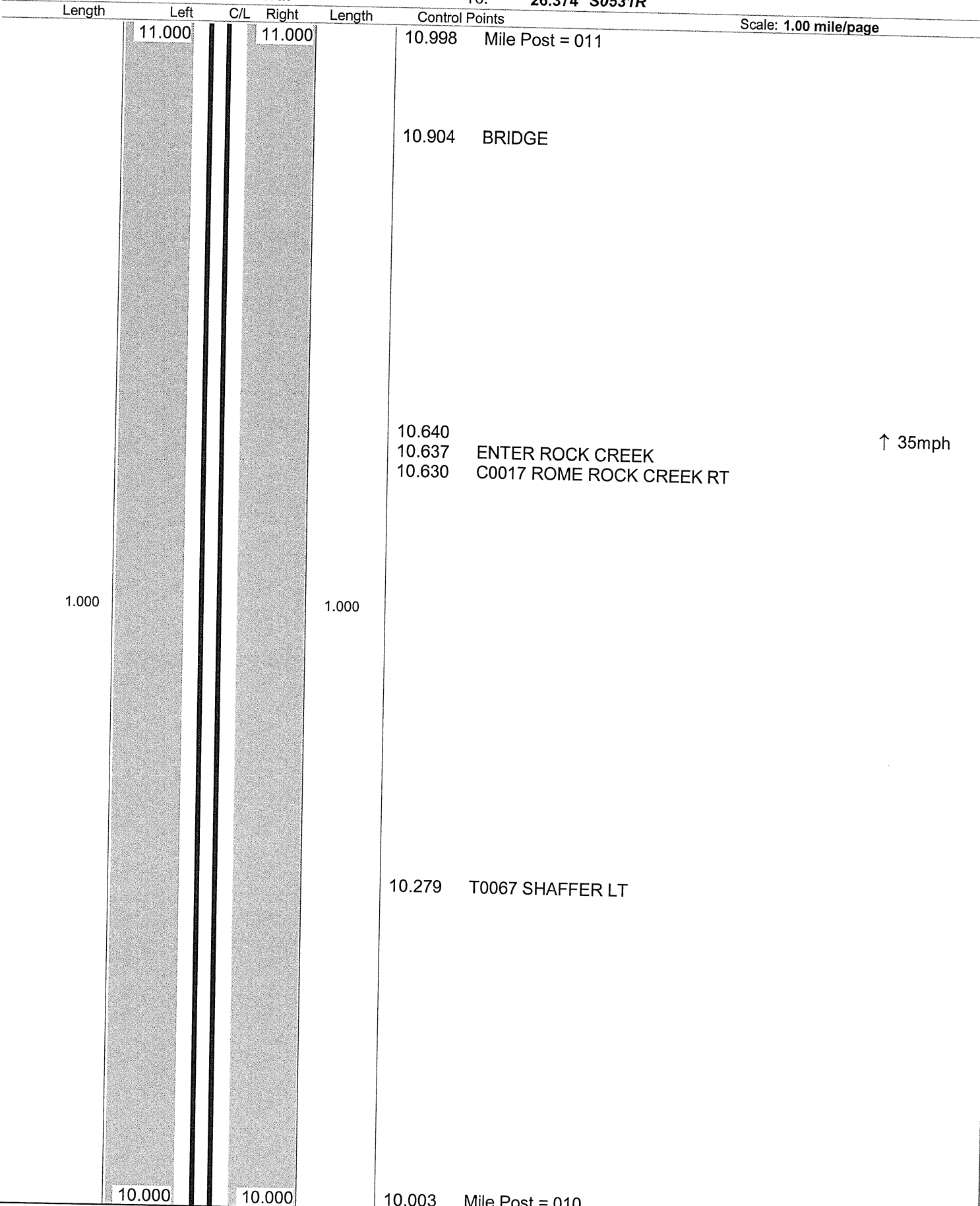
Route: 0045R (SATBSR00045\*\*C)

Length: 26.374

Direction: North

From: 0.000 LEAVE TRU CO

To: 26.374 S0531R



Sheet total equivalent length of solid line: 2.000

Accum. total: 8.461



**ODOT District 4**  
**No Passing Zone Log (ATB)**

Route: 0045R (SATBSR00045\*\*C)

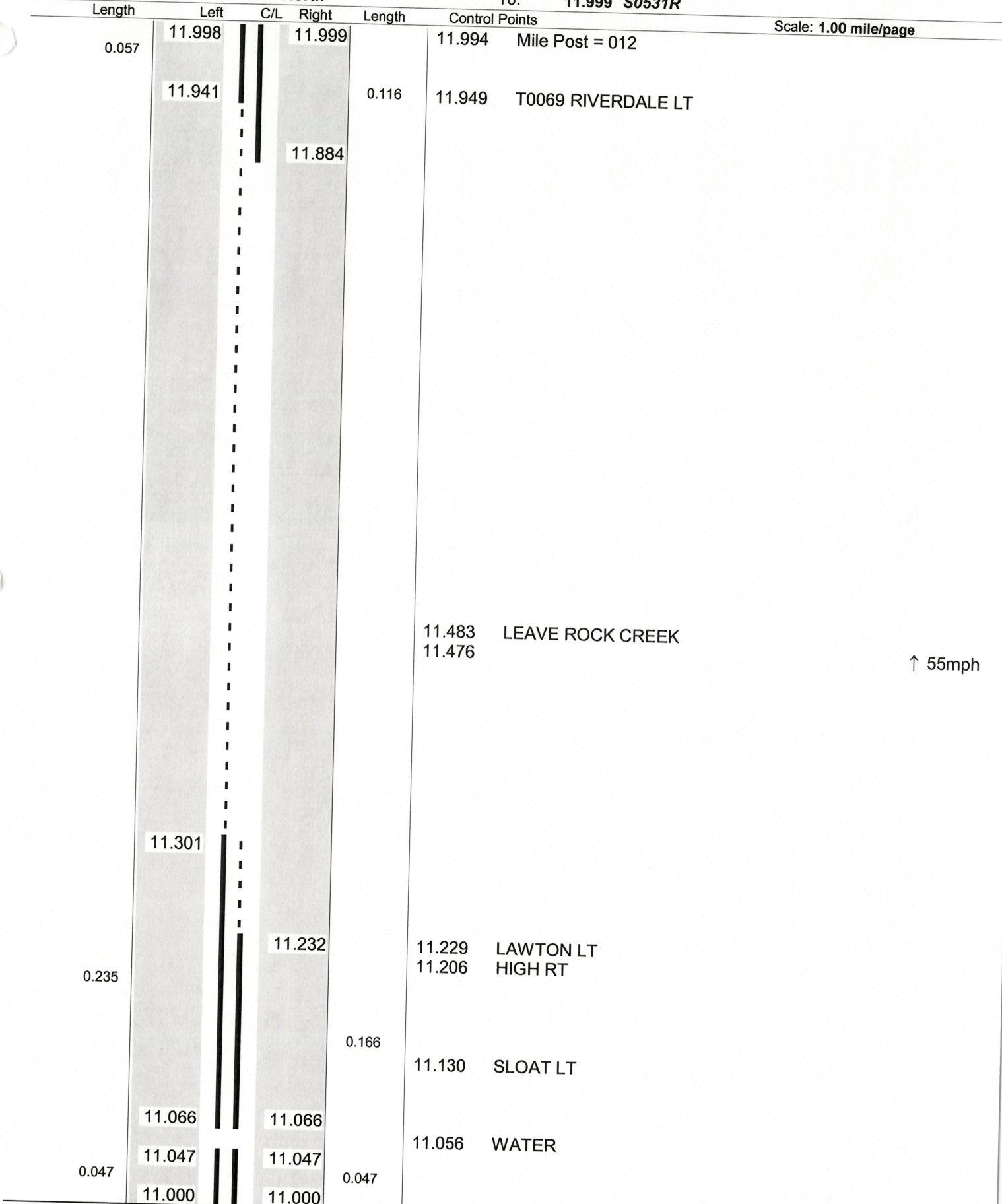
Length: 0.999

Direction: North

From: 11.000 LEAVE TRU CO

To: 11.999 S0531R

Scale: 1.00 mile/page



↑ 55mph

Sheet total equivalent length of solid line: 0.845

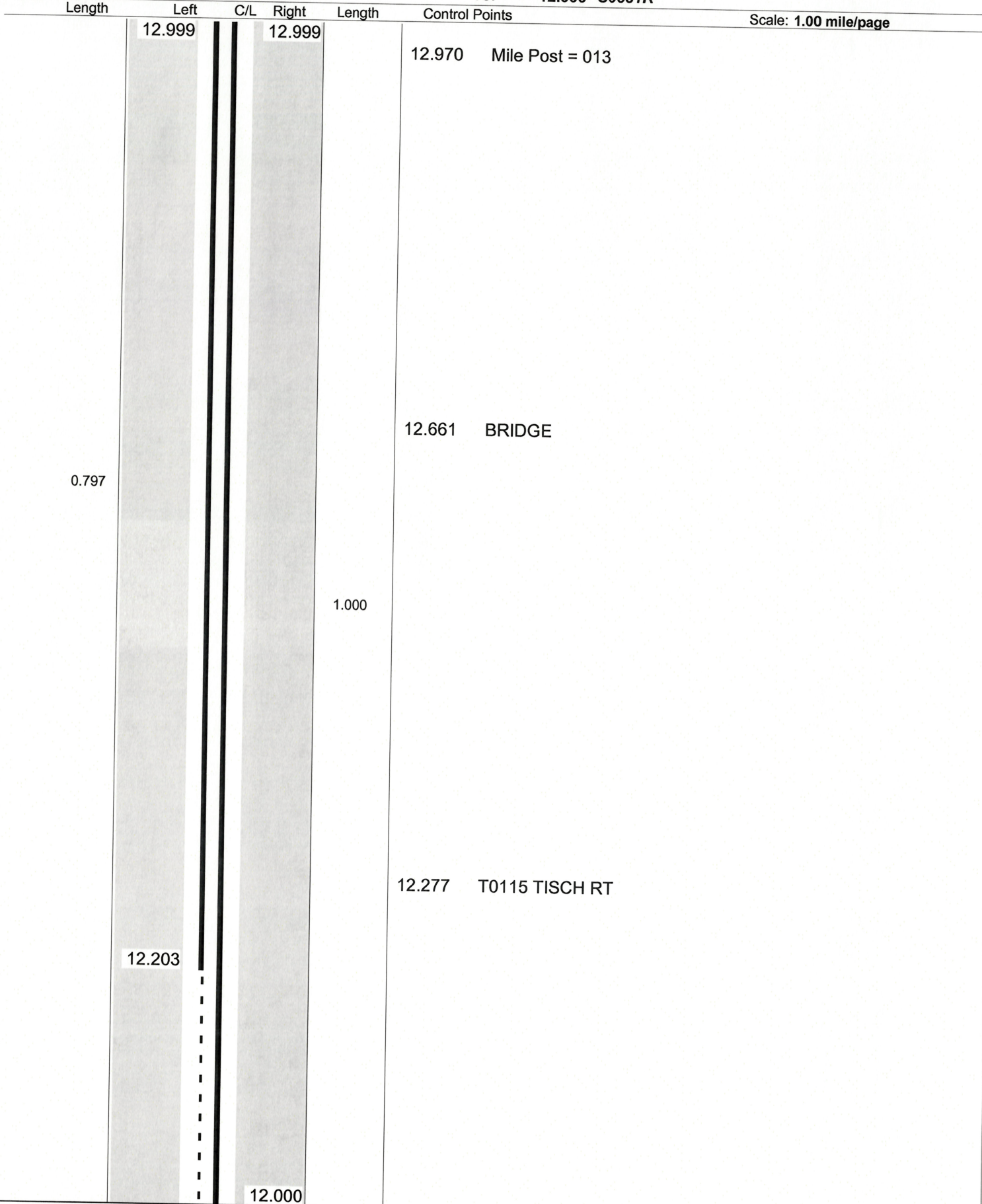
Accum. total: 0.845



**ODOT District 4  
No Passing Zone Log (ATB)**

Route: 0045R (SATBSR00045\*\*C)  
Length: 0.999 Direction: North

From: 12.000 LEAVE TRU CO  
To: 12.999 S0531R



Sheet total equivalent length of solid line: 1.846

Accum. total: 1.846

ODOT Dist 4 - Ashtabula County - FINAL  
 No Passing Zone Log (ATB)

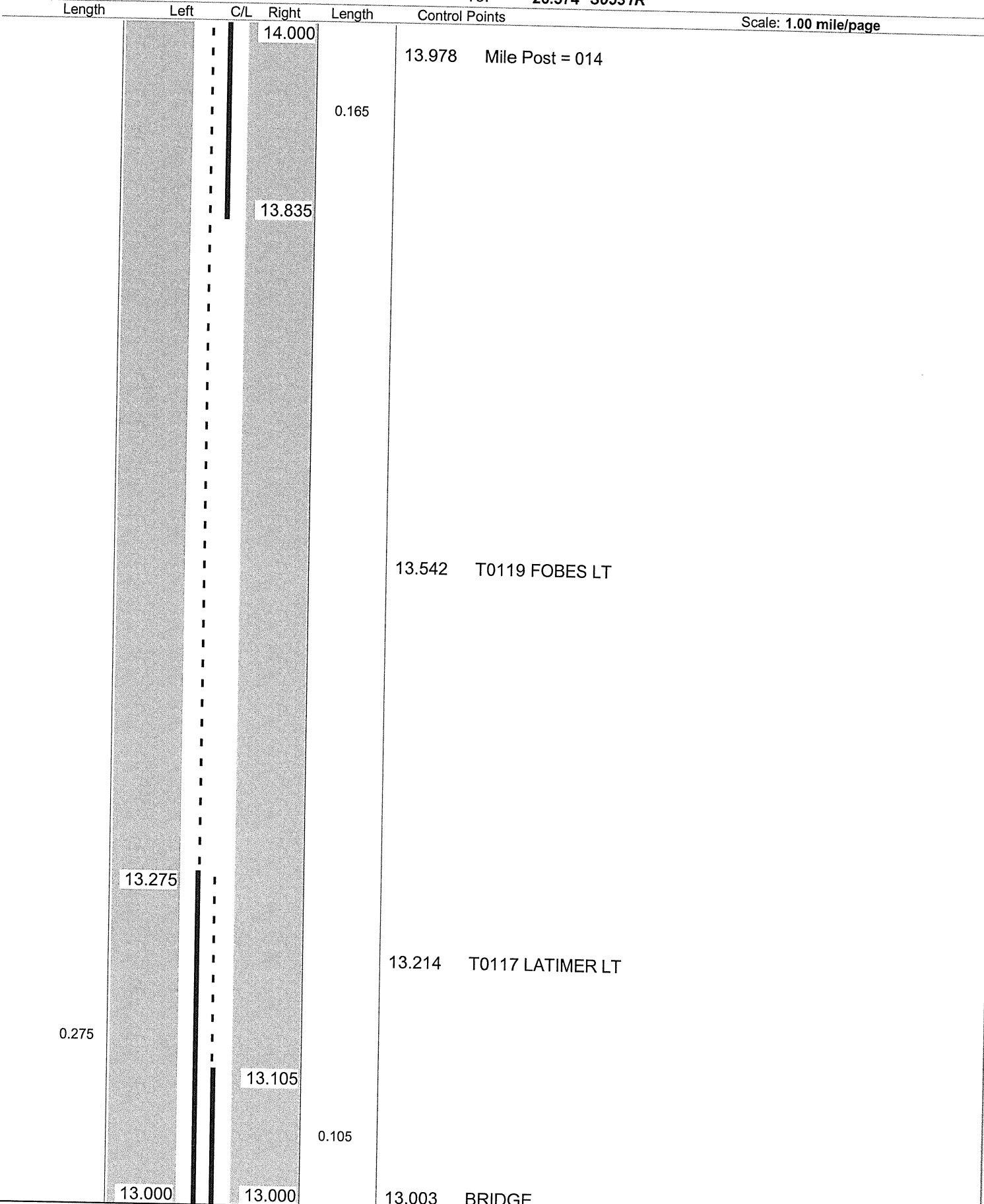
Route: 0045R (SATBSR00045\*\*C)

From: 0.000 LEAVE TRU CO

Length: 26.374

Direction: North

To: 26.374 S0531R



Sheet total equivalent length of solid line: 0.769

Accum. total: 11.732



**ODOT District 4  
No Passing Zone Log (ATB)**

Route: 0045R (SATBSR00045\*\*C)

From: 14.000 LEAVE TRU CO

Length: 0.990 Direction: North

To: 14.990 S0531R

Scale: 1.00 mile/page

Length	Left	C/L	Right	Length	Control Points
			14.990	0.052	
			14.948		14.930 Mile Post = 015
	14.875				14.824 BRIDGE
			14.731		14.747 C0014 EAGLEVILLE JEFFERSON RT
0.870					14.491 C0120 SCHEITZER LT
				0.731	
	14.005		14.000		

Sheet total equivalent length of solid line: 1.709

Accum. total: 1.709

ODOT Dist 4 - Ashtabula County - FINAL  
 No Passing Zone Log (ATB)

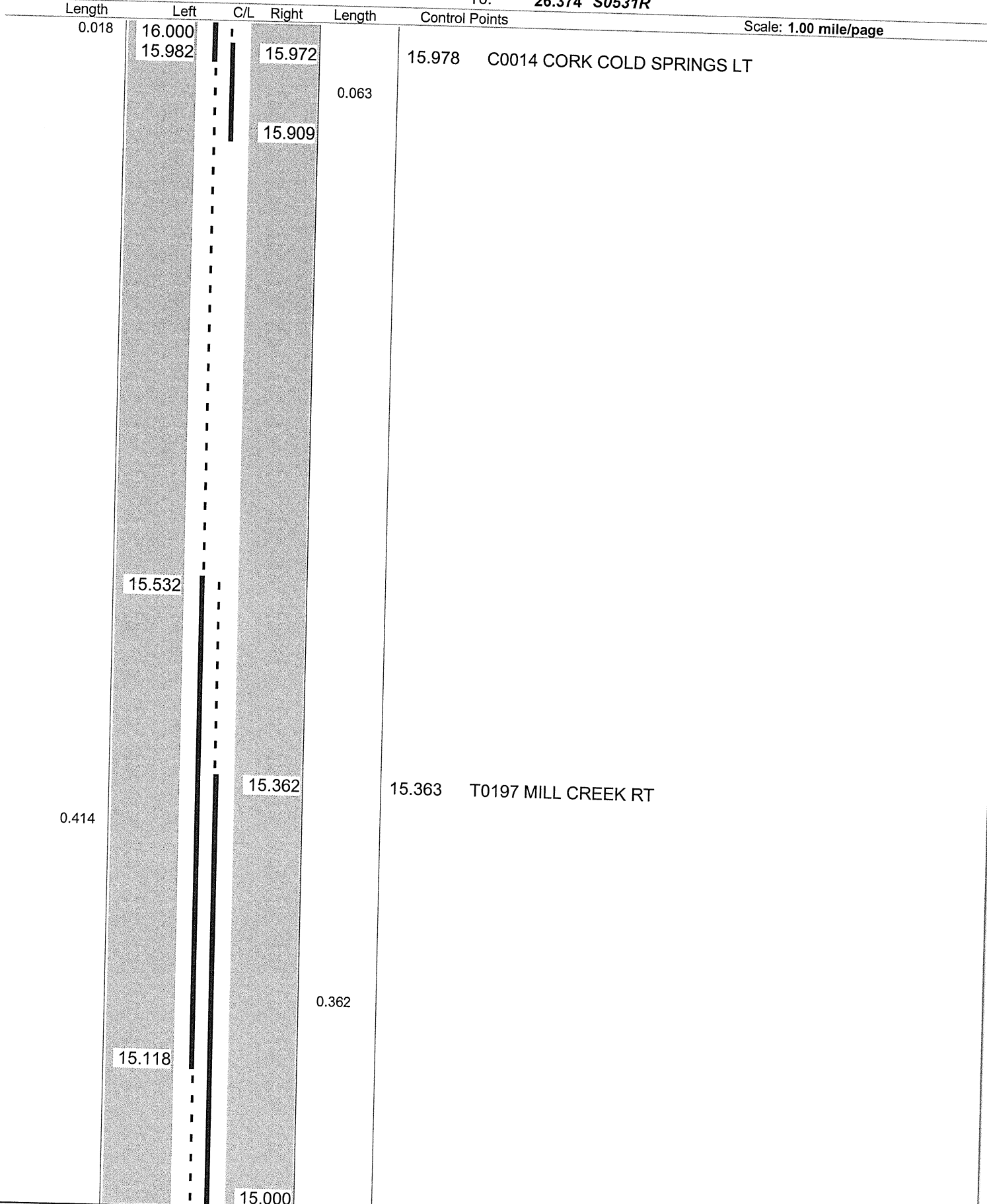
Route: 0045R (SATBSR00045\*\*C)

Length: 26.374

Direction: North

From: 0.000 LEAVE TRU CO

To: 26.374 S0531R



Sheet total equivalent length of solid line: 1.046

Accum. total: 14.480

**ODOT Dist 4 - Ashtabula County - FINAL**  
**No Passing Zone Log (ATB)**

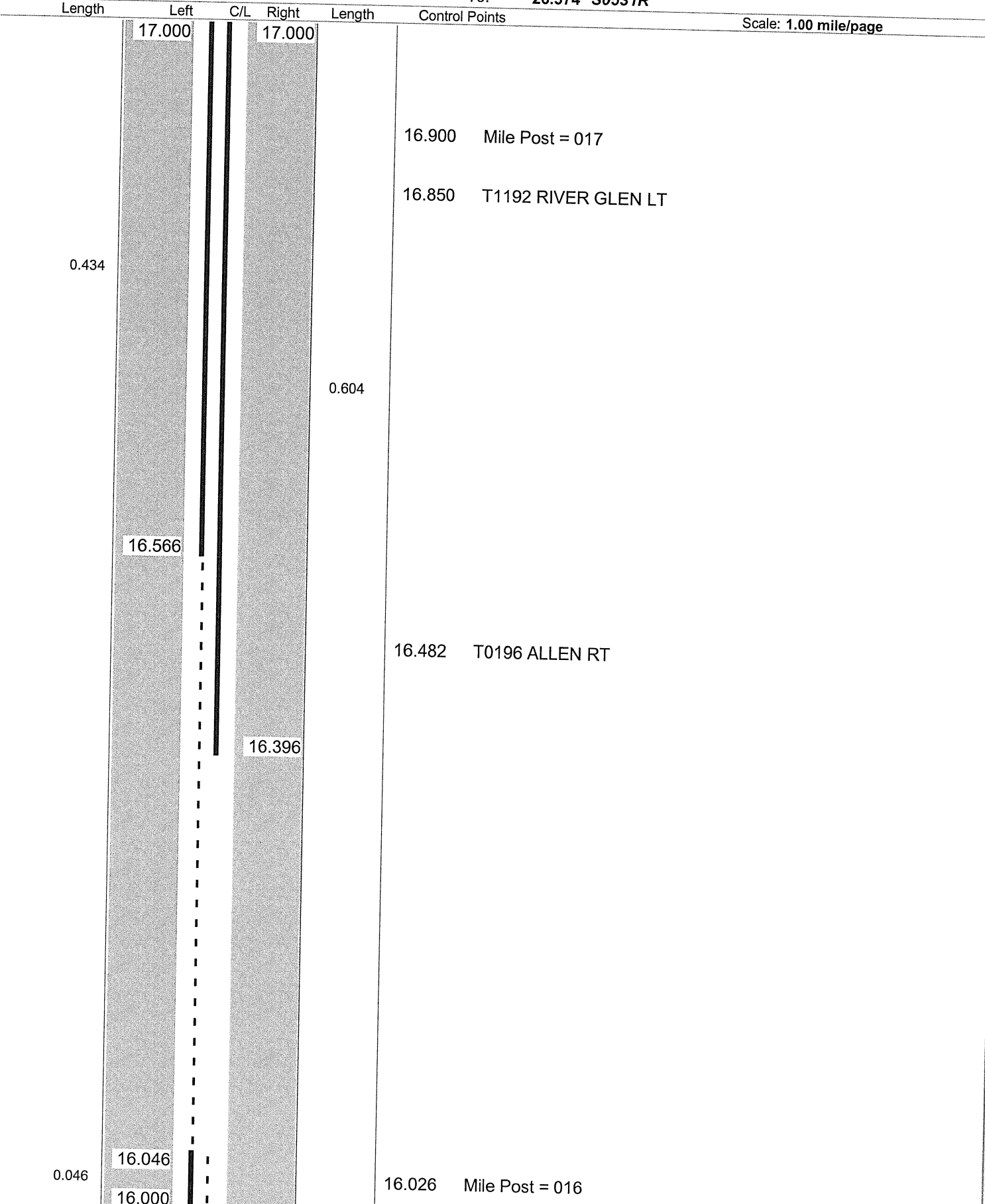
Route: **0045R (SATBSR00045\*\*C)**

Length: **26.374**

Direction: **North**

From: **0.000 LEAVE TRU CO**

To: **26.374 S0531R**



Scale: 1.00 mile/page

Sheet total equivalent length of solid line: 1.226

Accum. total: 15.706

ODOT Dist 4 - Ashtabula County - FINAL  
 No Passing Zone Log (ATB)

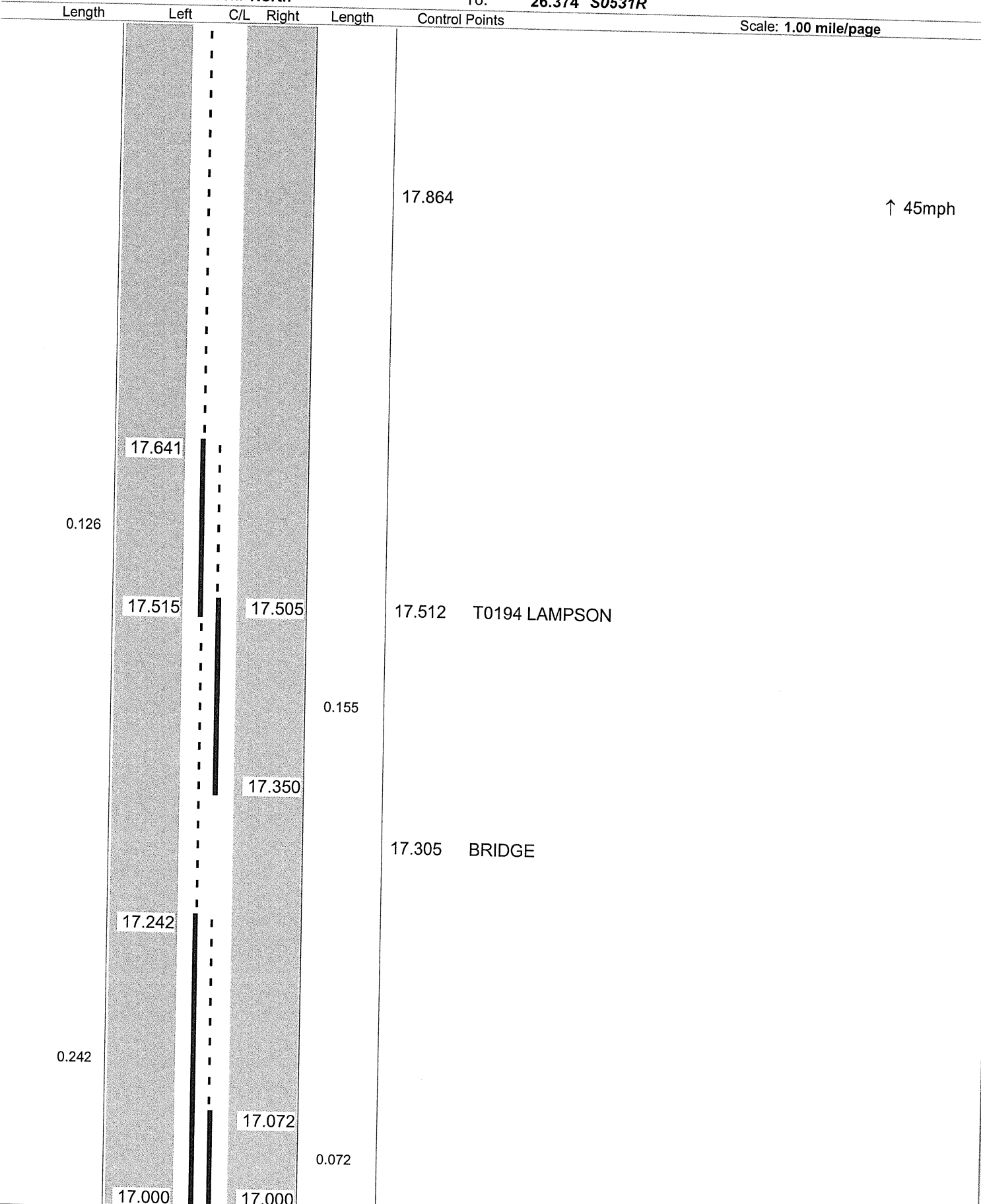
Route: 0045R (SATBSR00045\*\*C)

Length: 26.374

Direction: North

From: 0.000 LEAVE TRU CO

To: 26.374 S0531R



Sheet total equivalent length of solid line: 0.827

Accum. total: 16.533



**ODOT District 4  
No Passing Zone Log (ATB)**

Route: 0045R (SATBSR00045\*\*C)

From: 18.000 LEAVE TRU CO

Length: 0.499 Direction: North

To: 18.499 S0531R

Length	Left	C/L	Right	Length	Control Points	Scale: 0.50 mile/page
			18.499			
				0.186		
					18.368	
					18.360 INDUSTRIAL PARK LT	↑ 35mph
			18.314			

# ODOT Dist 4 - Ashtabula County - FINAL

## No Passing Zone Log (ATB)

Route: 0045R (SATBSR00045\*\*C)  
 Length: 26.374

Direction: North

From: 0.000 LEAVE TRU CO  
 To: 26.374 S0531R

Length	Left	C/L	Right	Length	Control Points
	19.000		18.988		18.994 MILL RT
0.088				0.076	
	18.912		18.912	0.039	
0.039				0.039	
	18.873		18.873	0.035	
			18.838		
	18.815				18.826 S0307R
0.029					
	18.786		18.786	0.045	
0.045				0.045	
	18.741		18.741		18.728 CHESTNUT RT
					18.684 MAPLE LT
					18.642 T1017 BETTS RT
0.231				0.241	
	18.510		18.500		

Scale: 0.50 mile/page

Sheet total equivalent length of solid line: 1.106

Accum. total: 17.858



ODOT Dist 4 - Ashtabula County - FINAL  
 No Passing Zone Log (ATB)

Route: 0045R (SATBSR00045\*\*C)

Length: 26.374

Direction: North

From: 0.000 LEAVE TRU CO

To: 26.374 S0531R

Length      Left      C/L      Right      Length      Control Points

Scale: 0.50 mile/page

0.134

19.500

19.500

19.366

0.289

19.211

19.091 BRIDGE

0.042

19.042

19.008

19.000

↑ 40mph

Sheet total equivalent length of solid line: 0.557

Accum. total: 18.415

ODOT Dist 4 - Ashtabula County - FINAL  
 No Passing Zone Log (ATB)

Route: 0045R (SATBSR00045\*\*C)

Length: 26.374

Direction: North

From: 0.000 LEAVE TRU CO

To: 26.374 S0531R

Length	Left	C/L	Right	Length	Control Points
0.019	20.000		20.000		
	19.981		19.981		
0.035	19.946		19.946	0.035	
	19.919		19.919		19.928 I0090R RAMPS
0.105				0.105	
	19.814		19.814		19.844 I0090R Bridge (Hwy Over Hwy)
	19.789		19.789		19.809 I0090R RAMPS
0.049	19.740		19.740	0.049	
	19.719		19.719		
0.033	19.686		19.686	0.033	19.675 T1304 G H DRIVE
0.186				0.186	
	19.500		19.500		19.515 C0016 CLAY

Scale: 0.50 mile/page

Sheet total equivalent length of solid line: 1.015

Accum. total: 19.430

ODOT Dist 4 - Ashtabula County - FINAL  
 No Passing Zone Log (ATB)

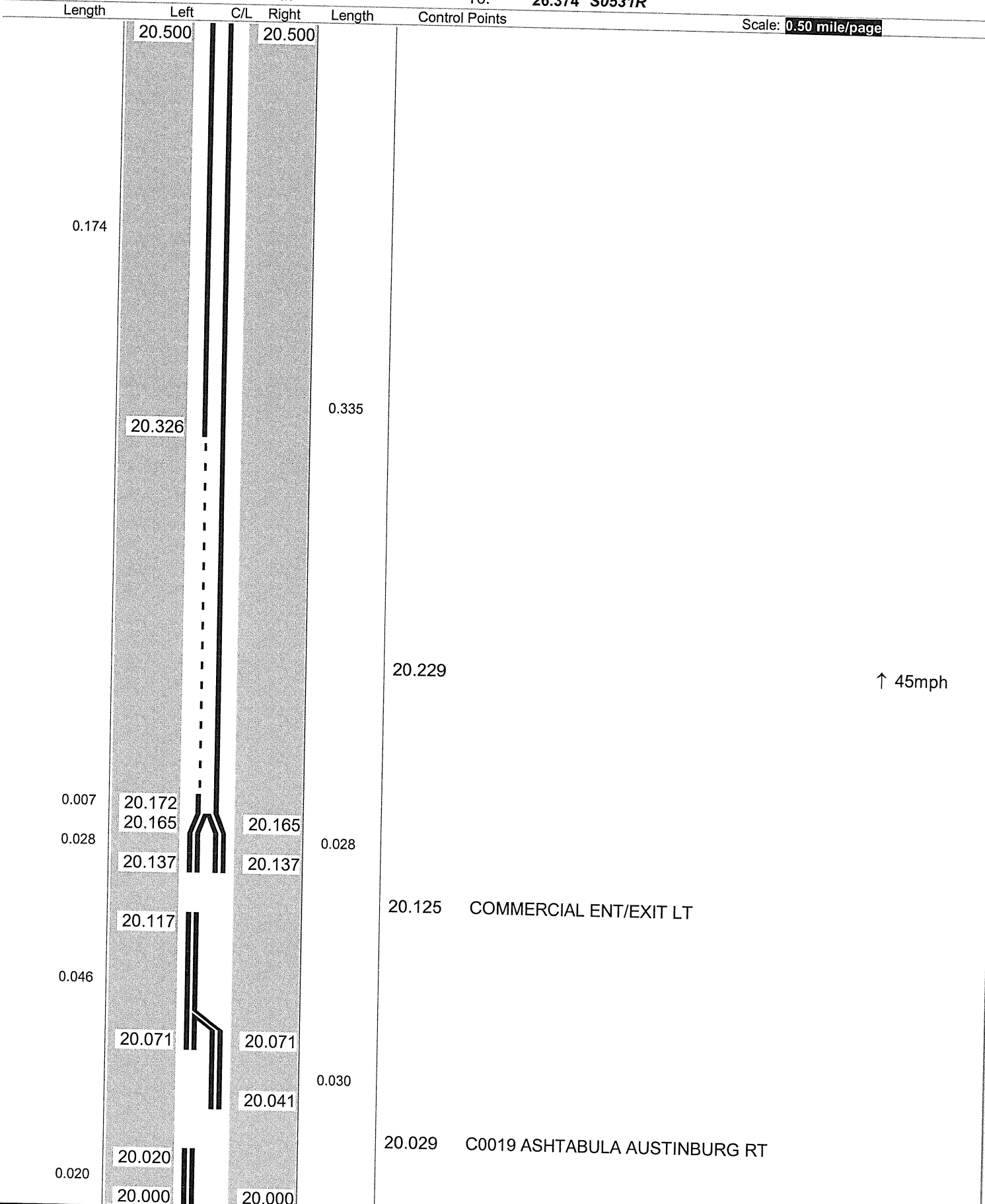
Route: 0045R (SATBSR00045\*\*C)

Length: 26.374

Direction: North

From: 0.000 LEAVE TRU CO

To: 26.374 S0531R



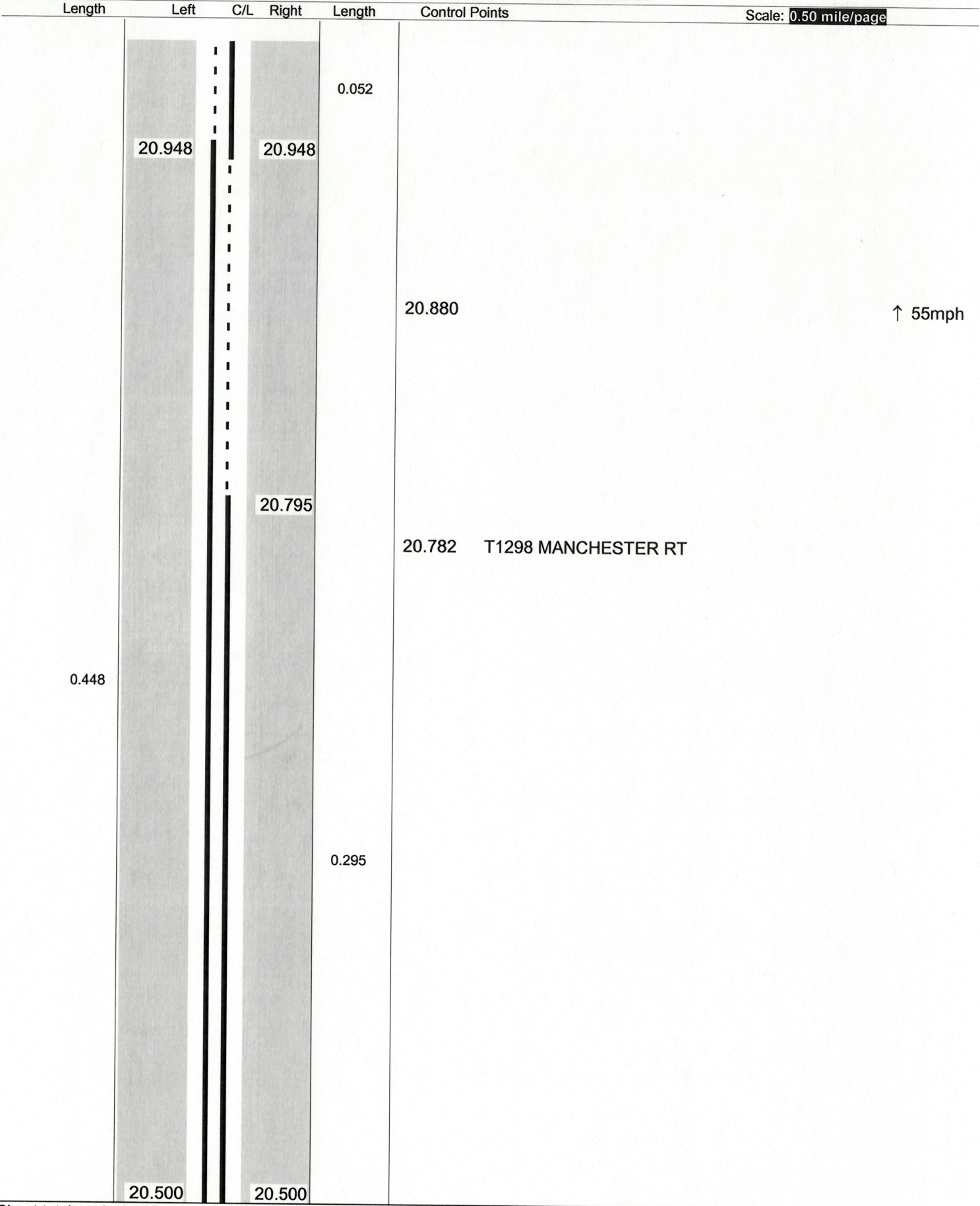
Sheet total equivalent length of solid line: 0.859

Accum. total: 20.289

**ODOT District 4  
No Passing Zone Log (ATB)**

Route: 0045R (SATBSR00045\*\*C)  
Length: 0.490 Direction: North

From: 20.500 LEAVE TRU CO  
To: 20.990 S0531R



Sheet total equivalent length of solid line: 0.834

Accum. total: 0.834



**ODOT District 4  
No Passing Zone Log (ATB)**

Route: 0045R (SATBSR00045\*\*C)

Length: 0.990

Direction: North

From: 21.000 LEAVE TRU CO

To: 21.990 S0531R

Length	Left	C/L	Right	Length	Control Points
0.201	21.990		21.990		
				0.371	21.880 Mile Post = 022
	21.799				
			21.629		
	21.615				
			21.445		
0.366					
	21.249			0.445	
			21.000		

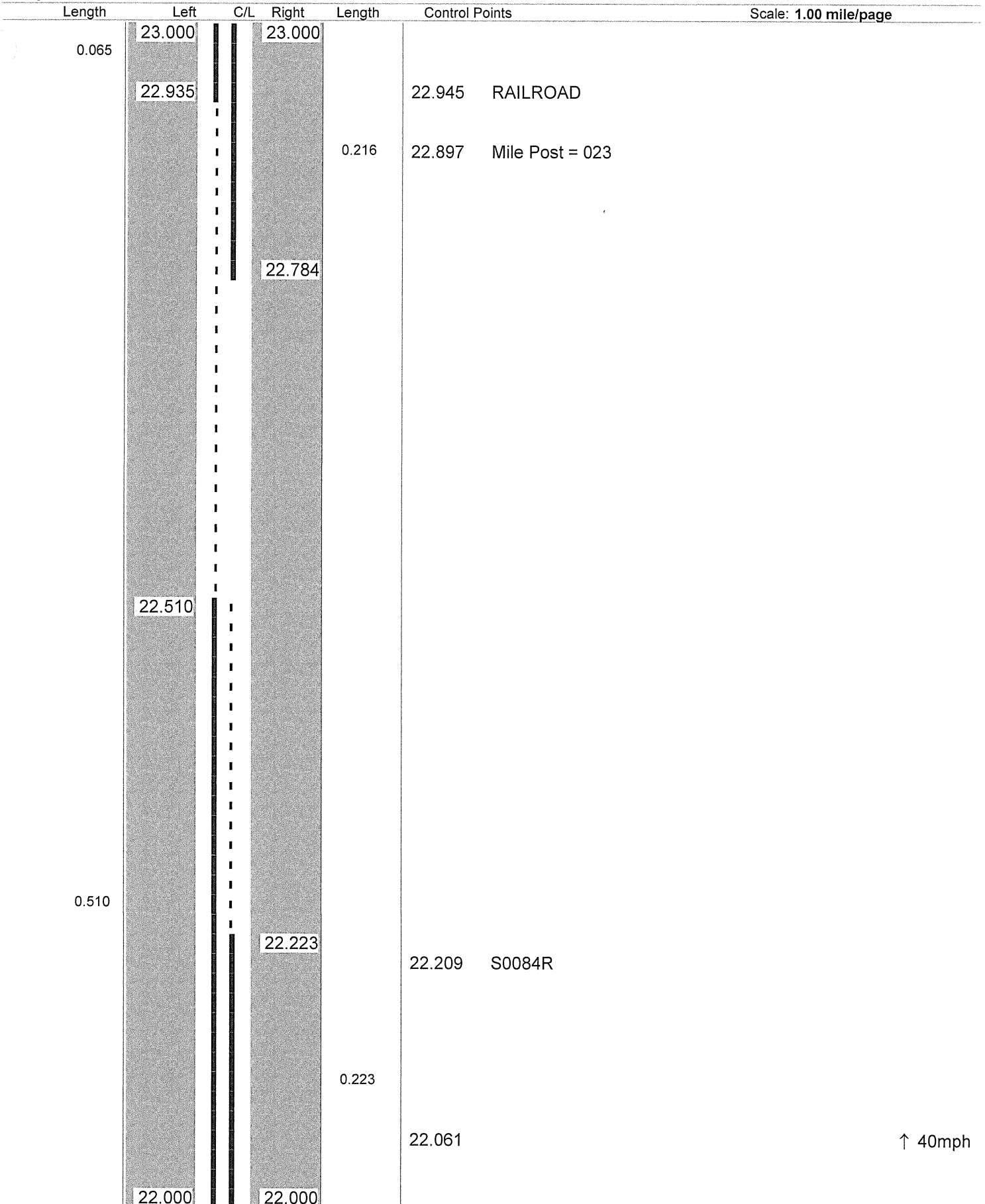
**ODOT District 4**  
**No Passing Zone Log (ATB)**

Route: 0045R (SATBSR00045\*\*C)

From: 22.000 LEAVE TRU CO

Length: 1.000 Direction: North

To: 23.000 S0531R



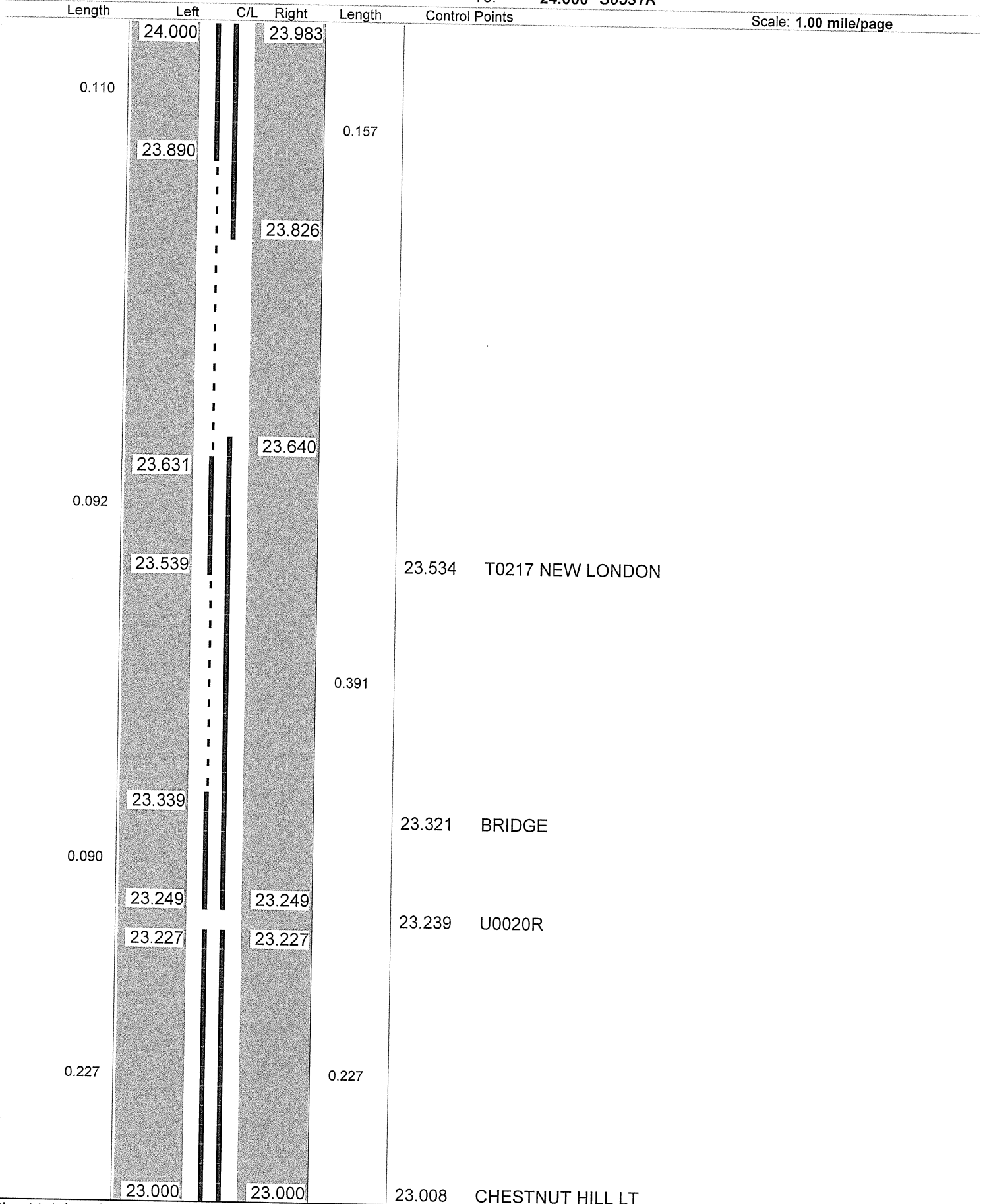
Sheet total equivalent length of solid line: 1.192

Accum. total: 1.192

ODOT District 4  
No Passing Zone Log (ATB)

Route: 0045R (SATBSR00045\*\*C)  
Length: 1.000 Direction: North

From: 23.000 LEAVE TRU CO  
To: 24.000 S0531R



Sheet total equivalent length of solid line: 1.413

Accum. total: 1.413



ODOT District 4  
No Passing Zone Log (ATB)

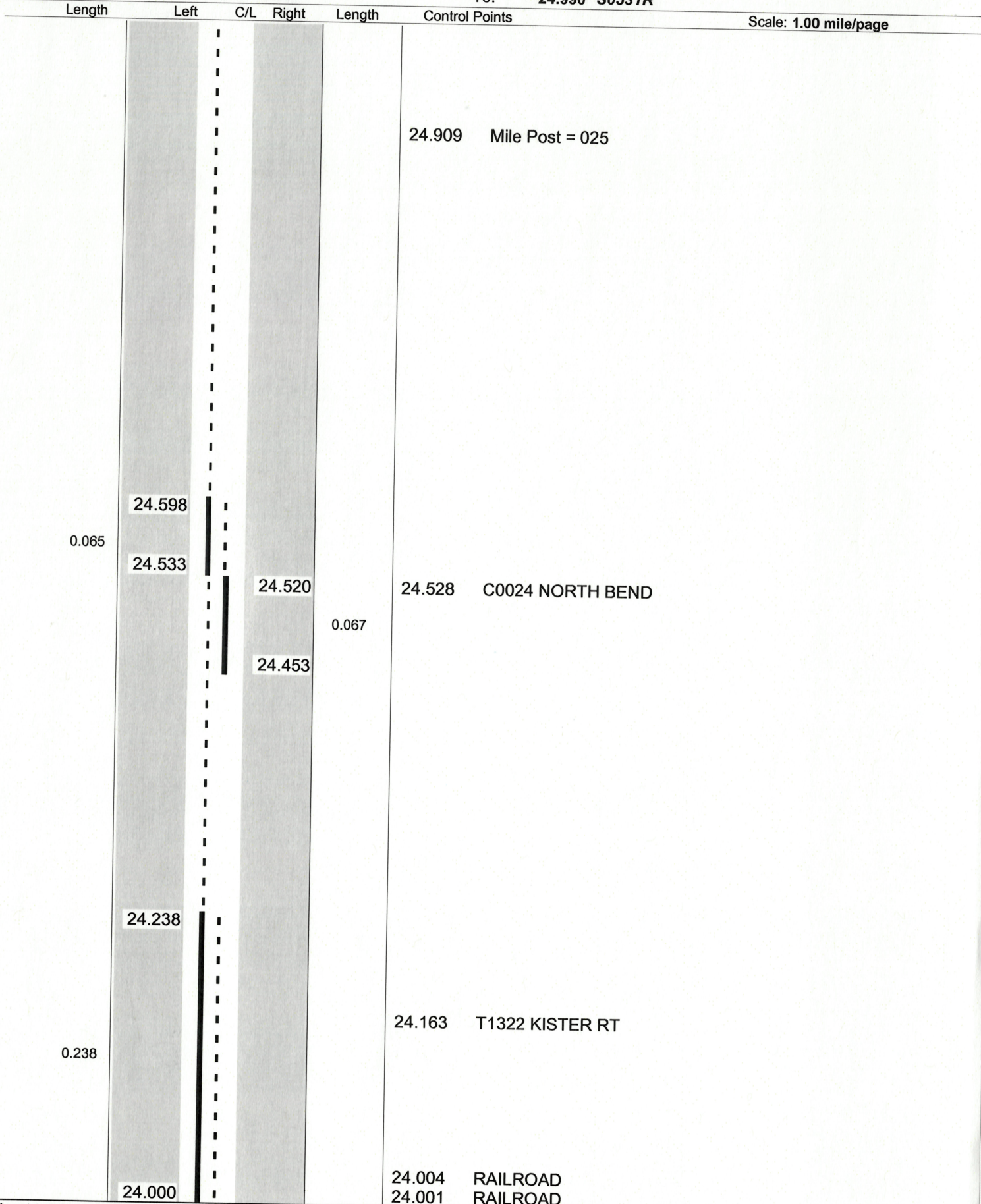
Route: 0045R (SATBSR00045\*\*C)

Length: 0.990

Direction: North

From: 24.000 LEAVE TRU CO

To: 24.990 S0531R



Scale: 1.00 mile/page

Sheet total equivalent length of solid line: 0.618

Accum. total: 0.618



ODOT Dist 4 - Ashtabula County - FINAL  
 No Passing Zone Log (ATB)

Route: 0045R (SATBSR00045\*\*C)

Length: 26.374

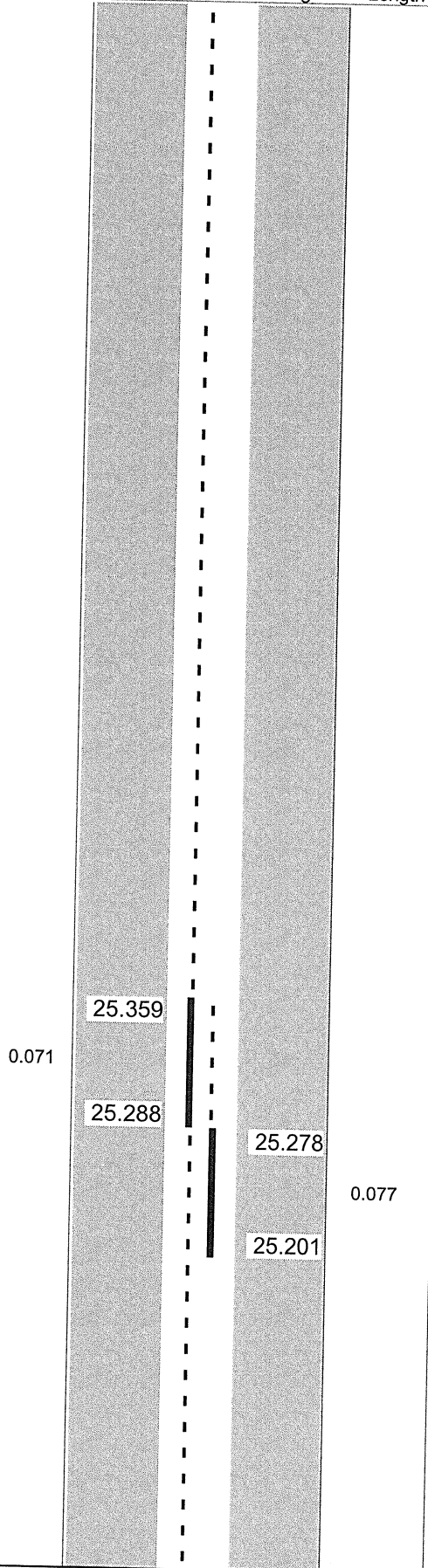
Direction: North

From: 0.000 LEAVE TRU CO

To: 26.374 S0531R

Length	Left	C/L	Right	Length	Control Points
--------	------	-----	-------	--------	----------------

Scale: 1.00 mile/page



25.905 Mile Post = 026

25.292  
 25.285 T0228 GORE LT

↑ 45mph

25.075 BRIDGE

Sheet total equivalent length of solid line: 0.398

Accum. total: 25.457

**ODOT Dist 4 - Ashtabula County - FINAL**  
**No Passing Zone Log (ATB)**

Route: **0045R (SATBSR00045\*\*C)**

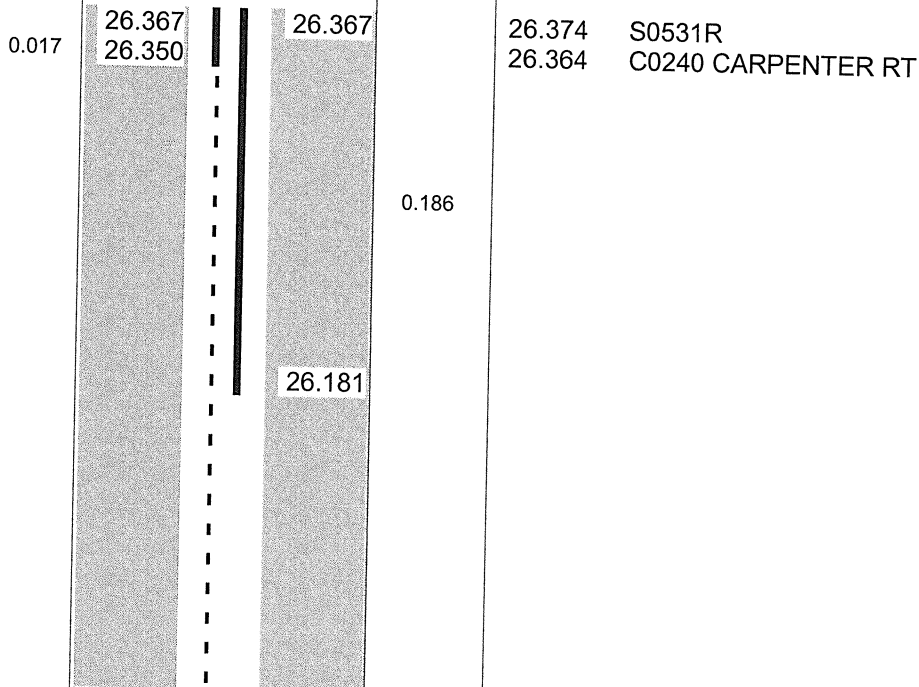
From: **0.000 LEAVE TRU CO**

Length: **26.374** Direction: **North**

To: **26.374 S0531R**

Length	Left	C/L	Right	Length	Control Points
--------	------	-----	-------	--------	----------------

Scale: 1.00 mile/page



Sheet total equivalent length of solid line: 0.292

Accum. total: 25.749