

MAINTENANCE OF TRAFFIC - PHASE 3A (2027/2028 CONSTRUCTION)
 US 6 - STA. 1803+00.00 TO END PROJECT

DESIGN AGENCY	
TRANSYSTEMS	400 W. NATIONWIDE BLVD., STE 225 COLUMBUS, OHIO 43215
DESIGNER	SSA
REVIEWER	SS 10/27/25
PROJECT ID	116570
SHEET	TOTAL
P.0277	1106

- NOTES:**
1. FOR MOT LEGEND, SEE SHEET P.0084.
 2. FOR SIGNING AND PAVEMENT MARKING DETAILS, SEE TRAFFIC CONTROL PLANS.

ERI-US 0006-CONNECTIVITY CORRIDOR

MODEL: Sheet 1 PAPER: 34x22 (in.) DATE: 4/30/2028 TIME: 2:22:43 PM PLTDRV: OHDOT_PDF.plt PENTBL: OHDOT_Pen.tbl USER: kkontautale@giffinc.com WORKSPACE: OHDOTCE02 WORKSET: 116570 PRODUCT: OpenRoadsDesigner 24.00.00.205
 p:\ohdot\pwr\benley.com\ohdot\pwr-02\Documents\01 Active Projects\District 03\ERI\116570\402-Engineering_Transystems\Roadway\Sheets\116570_G0001.dgn

SHEET NUM.														PART.	ITEM	ITEM	GRAND	UNIT	DESCRIPTION	SEE SHEET NO.
P.0064	P.0069	P.0077	P.0301	P.0305	P.0312	P.0316	P.0346	P.0353	P.0363	P.0367	P.0371	P.0766	P.0768			EXT	TOTAL			
ROADWAY																				
LS			2	5												201	11000	LS		CLEARING AND GRUBBING
			24,519	41,119												202	20010	7	EACH	HEADWALL REMOVED
				10,599												202	23000	65,638	SY	PAVEMENT REMOVED
			242	1,650												202	30000	10,599	SF	WALK REMOVED
																202	32000	1,892	FT	CURB REMOVED
			131	3,604												202	32500	3,735	FT	CURB AND GUTTER REMOVED
			120	4,831					711							202	35100	5,662	FT	PIPE REMOVED, 24" DIAMETER AND UNDER
			57	61												202	35200	118	FT	PIPE REMOVED, OVER 24" DIAMETER
			1,061	4,320												202	38000	5,381	FT	GUARDRAIL REMOVED
			11	41												202	53100	52	EACH	MAILBOX REMOVED
				6												202	58000	6	EACH	MANHOLE REMOVED
			1	25												202	58100	26	EACH	CATCH BASIN REMOVED
			768	933												202	75000	1,701	FT	FENCE REMOVED
			2													202	75250	2	EACH	GATE REMOVED
									5							202	75600	5	EACH	METER VAULT REMOVED
									16							202	75610	16	EACH	VALVE BOX REMOVED, INCLUDES VALVE
				1												202	98100	1	EACH	REMOVAL MISC.: BILLBOARD
				35												202	98100	35	EACH	REMOVAL MISC.: BOULDER
			4													202	98100	4	EACH	REMOVAL MISC.: CONCRETE POST
			2													202	98100	2	EACH	REMOVAL MISC.: ELECTRIC OUTLET
				1												202	98100	1	EACH	REMOVAL MISC.: FLAG POLE
			1	75												202	98100	76	EACH	REMOVAL MISC.: LANDSCAPE ROCK
			3	3												202	98100	6	EACH	REMOVAL MISC.: PRIVATE LIGHT POLE
			9	26												202	98100	35	EACH	REMOVAL MISC.: PRIVATE SIGN
			9													202	98100	9	EACH	REMOVAL MISC.: STEEL POST
																202	98100	3	EACH	REMOVAL MISC.: WATER FAUCET
			3													202	98100	9	EACH	REMOVAL MISC.: WOOD POST
			7	2												202	98100	2	EACH	REMOVAL MISC.: YARD ART
				2												202	98100	2	EACH	REMOVAL MISC.: LANDSCAPE WALL
			38													202	98200	38	FT	REMOVAL MISC.: LANDSCAPE WALL
			4													202	98100	4	EACH	REMOVAL MISC.: LANDSCAPE BED
		70,400														SPECIAL	20307504	70,400	FT	WICK DRAIN
	26,370															203	10000	26,370	CY	EXCAVATION
										849	2,786					203	10001	3,635	CY	EXCAVATION, AS PER PLAN
	90,648						3,158									203	20000	93,806	CY	EMBANKMENT
		3,260														203	35120	3,260	CY	GRANULAR MATERIAL, TYPE C
		2														SPECIAL	20365000	2	EACH	SETTLEMENT PLATFORM
							3,140	3,214				4,290	5,000			204	10000	15,644	SY	SUBGRADE COMPACTION
							1,221	1,333								204	13000	2,554	CY	EXCAVATION OF SUBGRADE (14" DEEP)
							1,221	1,333								204	30010	2,554	CY	GRANULAR MATERIAL, TYPE B
							16	28								204	45000	44	HOUR	PROOF ROLLING
							3,140	3,259								204	51000	6,399	SY	GEOGRID
							1,529	1,577								206	10500	3,106	TON	CEMENT
							50,661	52,255								206	11000	102,916	SY	CURING COAT
							50,661	52,255								206	15020	102,916	SY	CEMENT STABILIZED SUBGRADE, 14 INCHES DEEP
								LS								206	30000	LS		MIXTURE DESIGN FOR CHEMICALLY STABILIZED SOILS
					626	2,488										606	15050	3,114	FT	GUARDRAIL, TYPE MGS
					2	7										606	26150	9	EACH	ANCHOR ASSEMBLY, MGS TYPE E (MASH 2016)
					1	9										606	26550	10	EACH	ANCHOR ASSEMBLY, MGS TYPE T
						2										606	35002	2	EACH	MGS BRIDGE TERMINAL ASSEMBLY, TYPE 1
						2										606	35102	2	EACH	MGS BRIDGE TERMINAL ASSEMBLY, TYPE 2
						4										606	35140	4	EACH	BRIDGE TERMINAL ASSEMBLY, TYPE 4
					2											606	60028	2	EACH	IMPACT ATTENUATOR, TYPE 2 (BIDIRECTIONAL), (55MPH, 20-IN)
						573										607	15000	573	FT	FENCE, TYPE 47
						2,159										607	70000	2,159	FT	FENCELINE SEEDING AND MULCHING
					1,011	1,586										607	98000	2,597	FT	FENCE, MISC.: WOOD FENCE
						1,324										608	10000	1,324	SF	4" CONCRETE WALK
					4,495	5,038										608	52000	9,533	SF	CURB RAMP

GENERAL SUMMARY

DESIGN AGENCY
TRANSYSTEMS
 400 W. NATIONWIDE BLVD., STE. 225
 COLUMBUS, OHIO 43215

DESIGNER
JIW

REVIEWER
GHM 10/27/25

PROJECT ID
116570

SHEET TOTAL
P.0285 | 1106

P.0068

P.0069

P.0069

P.0068

P.0122

P.0840

P.0122

P.0076

ERI-US 0006-CONNECTIVITY CORRIDOR

MODEL: Sheet 1.1 PAPER: 34x22 (in.) DATE: 4/30/2026 TIME: 2:24:31 PM PLTDRY: OHDOT_PDF.plt PENTBL: OHDOT_PDF.plt USER: hontautate@ghfinc.com WORKSPACE: OHDOTCEV02 WORKSET: 116570 PRODUCT: OpenRoadsDesigner 24.00.00.205
 p:\ohdot\p-w-bentley.com\ohdot\p-w-02\Documents\01 Active Projects\District 03\ERI\116570\402-Engineering_TransSystems\Roadway\Sheets\116570_G0001.dgn

PART.								ITEM	ITEM EXT	GRAND TOTAL	UNIT	DESCRIPTION	SEE SHEET NO.
01/SAF	02/SAF	03/S50	04/ENH	05/ENH	06/BRO	07/BRO	08/NFA						
ROADWAY													
LS	LS	LS	LS	LS				201	11000	LS		CLEARING AND GRUBBING	
	2	1	2	2				202	20010	7	EACH	HEADWALL REMOVED	
42,522	8,906	9,020	5,190					202	23000	65,638	SY	PAVEMENT REMOVED	
353			10,246					202	30000	10,599	SF	WALK REMOVED	
942	76		793	81				202	32000	1,892	FT	CURB REMOVED	
3,416			319					202	32500	3,735	FT	CURB AND GUTTER REMOVED	
1,533	54	2,695	1,267	89			24	202	35100	5,662	FT	PIPE REMOVED, 24" DIAMETER AND UNDER	
		61	57					202	35200	118	FT	PIPE REMOVED, OVER 24" DIAMETER	
1,498	1,786	718	1,017	362				202	38000	5,381	FT	GUARDRAIL REMOVED	
13		13	26					202	53100	52	EACH	MAILBOX REMOVED	
1		1	4					202	58000	6	EACH	MANHOLE REMOVED	
14	2	4	4	2				202	58100	26	EACH	CATCH BASIN REMOVED	
437		54	1,210					202	75000	1,701	FT	FENCE REMOVED	
1			1					202	75250	2	EACH	GATE REMOVED	
1		2					2	202	75600	5	EACH	METER VAULT REMOVED	
3		5	4				4	202	75610	16	EACH	VALVE BOX REMOVED, INCLUDES VALVE	
			1					202	98100	1	EACH	REMOVAL MISC.: BILLBOARD	P.0068
4		13	18					202	98100	35	EACH	REMOVAL MISC.: BOULDER	P.0069
			4					202	98100	4	EACH	REMOVAL MISC.: CONCRETE POST	P.0069
2								202	98100	2	EACH	REMOVAL MISC.: ELECTRIC OUTLET	P.0068
			1					202	98100	1	EACH	REMOVAL MISC.: FLAG POLE	P.0069
1		41	34					202	98100	76	EACH	REMOVAL MISC.: LANDSCAPE ROCK	P.0068
			6					202	98100	6	EACH	REMOVAL MISC.: PRIVATE LIGHT POLE	P.0068
9		7	19					202	98100	35	EACH	REMOVAL MISC.: PRIVATE SIGN	P.0069
			9					202	98100	9	EACH	REMOVAL MISC.: STEEL POST	P.0069
			3					202	98100	3	EACH	REMOVAL MISC.: WATER FAUCET	P.0068
7			2					202	98100	9	EACH	REMOVAL MISC.: WOOD POST	P.0069
		1	1					202	98100	2	EACH	REMOVAL MISC.: YARD ART	P.0069
37			1					202	98200	38	FT	REMOVAL MISC.: LANDSCAPE WALL	P.0069
4								202	98100	4	EACH	REMOVAL MISC.: LANDSCAPE BED	P.0069
70,400								SPECIAL	20307504	70,400	FT	WICK DRAIN	P.0122
6,857	3,323	7,279	8,703	208				203	10000	26,370	CY	EXCAVATION	
574	2,786		275					203	10001	3,635	CY	EXCAVATION, AS PER PLAN	P.0840
40,056	26,829	8,443	16,417	2,061				203	20000	93,806	CY	EMBANKMENT	
3,260								203	35120	3,260	CY	GRANULAR MATERIAL, TYPE C	P.0122
2								SPECIAL	20365000	2	EACH	SETTLEMENT PLATFORM	P.0076
5,421		5,808	4,415					204	10000	15,644	SY	SUBGRADE COMPACTION	
		1,328	1,226					204	13000	2,554	CY	EXCAVATION OF SUBGRADE (14" DEEP)	
		1,328	1,226					204	30010	2,554	CY	GRANULAR MATERIAL, TYPE B	
27	3	7	7					204	45000	44	HOUR	PROOF ROLLING	
		3,259	3,140					204	51000	6,399	SY	GEOGRID	
1,605	173	320	983	25				206	10500	3,106	TON	CEMENT	
53,169	5,740	10,612	32,557	838				206	11000	102,916	SY	CURING COAT	
53,169	5,740	10,612	32,557	838				206	15020	102,916	SY	CEMENT STABILIZED SUBGRADE, 14 INCHES DEEP	
LS	LS	LS	LS	LS				206	30000	LS		MIXTURE DESIGN FOR CHEMICALLY STABILIZED SOILS	
1,082	1,295	737						606	15050	3,114	FT	GUARDRAIL, TYPE MGS	
2.7	3.3	3						606	26150	9	EACH	ANCHOR ASSEMBLY, MGS TYPE E [MASH 2016]	
1.7	5.3	3						606	26550	10	EACH	ANCHOR ASSEMBLY, MGS TYPE T	
	2							606	35002	2	EACH	MGS BRIDGE TERMINAL ASSEMBLY, TYPE 1	
	2							606	35102	2	EACH	MGS BRIDGE TERMINAL ASSEMBLY, TYPE 2	
		4						606	35140	4	EACH	BRIDGE TERMINAL ASSEMBLY, TYPE 4	
2								606	60028	2	EACH	IMPACT ATTENUATOR, TYPE 2 (BIDIRECTIONAL), (55MPH, 20-IN)	
510				63				607	15000	573	FT	FENCE, TYPE 47	
510	768		553	328				607	70000	2,159	FT	FENCELINE SEEDING AND MULCHING	
	768		1,564	265				607	98000	2,597	FT	FENCE, MISC.: WOOD FENCE	P.0068
231			1,093					608	10000	1,324	SF	4" CONCRETE WALK	
819	581		7,893	240				608	52000	9,533	SF	CURB RAMP	

GENERAL SUMMARY

DESIGN AGENCY

TRANSYSTEMS
 400 W. NATIONWIDE BLVD., STE. 225
 COLUMBUS, OHIO 43215

DESIGNER

JIW

REVIEWER

GHM 10/27/25

PROJECT ID

116570

SHEET TOTAL

P.0286 1106

ERI-US 0006-CONNECTIVITY CORRIDOR

MODEL: Sheet 4.1 PAPER: 34x22 (in.) DATE: 4/30/2026 TIME: 4:38:14 PM PLTDRY: OHDOT_PDF.plt PENTBL: OHDOT_Pen.tbl USER: kromaulate@ghm.com WORKSPACE: OHDOTCEV02 WORKSET: 116570 PRODUCT: OpenRoadsDesigner 24.00.00.205
 p:\ohdot\pwr-bentley.com\ohdot\pwr-02\Documents\01 Active Projects\District 03\Erie\116570\402-Engineering_TransSystems\Roadway\Sheets\116570_G0001.dgn

PART.								ITEM	ITEM EXT	GRAND TOTAL	UNIT	DESCRIPTION	SEE SHEET NO.	
01/SAF	02/SAF	03/S50	04/ENH	05/ENH	06/BRO	07/BRO	08/NFA							
PAVEMENT														
8	1	14,584	4					254	01000	14,597	SY	PAVEMENT PLANING, ASPHALT CONCRETE (DEPTH VARIES 0.02' - 0.75')		
7,176	589	3,695	523					301	56000	11,983	CY	ASPHALT CONCRETE BASE, PG64-22, (449)		
10,439	1,080	2,827	5,465	119				304	20000	19,930	CY	AGGREGATE BASE		
6,971	425	4,887	1,187	39				407	20000	13,509	GAL	NON-TRACKING TACK COAT		
173		85	39					441	70500	297	CY	ASPHALT CONCRETE SURFACE COURSE, TYPE 1, (449), (DRIVEWAYS)		
194		112	56					441	70700	362	CY	ASPHALT CONCRETE INTERMEDIATE COURSE, TYPE 2, (449), (DRIVEWAYS)		
1,781	148	1,105	131					442	10000	3,165	CY	ASPHALT CONCRETE SURFACE COURSE, 12.5 MM, TYPE A (446)		
2,074	172	1,285	153					442	20171	3,684	CY	ASPHALT CONCRETE INTERMEDIATE COURSE, 12.5 MM, TYPE A (448), AS PER PLAN	P.0067	
1			1,071	27				442	22001	1,099	CY	ASPHALT CONCRETE SURFACE COURSE, 9.5 MM, TYPE A (449), AS PER PLAN	P.0066	
2			1,784	45				442	22401	1,831	CY	ASPHALT CONCRETE INTERMEDIATE COURSE, 19 MM, TYPE A (449), AS PER PLAN	P.0067	
1,382	536							451	13011	1,918	SY	8" REINFORCED CONCRETE PAVEMENT, CLASS QC 1P, AS PER PLAN	P.0068	
160								452	10010	160	SY	6" NON-REINFORCED CONCRETE PAVEMENT, CLASS QC 1P		
2,827	460							452	10011	3,287	SY	6" NON-REINFORCED CONCRETE PAVEMENT, CLASS QC 1P, AS PER PLAN	P.0067	
499		58						452	12010	557	SY	8" NON-REINFORCED CONCRETE PAVEMENT, CLASS QC 1P		
6,636	1,873	2,021	376					609	12000	10,906	FT	COMBINATION CURB AND GUTTER, TYPE 2		
1,020	716							609	22001	1,736	FT	CURB, TYPE 3-B, AS PER PLAN	P.0067	
742	503							609	24000	1,245	FT	CURB, TYPE 4-A		
6,099	1,428	185	648					609	26000	8,360	FT	CURB, TYPE 6		
93								609	26001	93	FT	CURB, TYPE 6, AS PER PLAN	P.0792	
			303					609	28000	303	FT	CURB, TYPE 7		
1.55			3.24					618	41000	4.79	MILE	RUMBLE STRIPES, EDGE LINE (ASPHALT CONCRETE)		
					0.04			618	42000	0.04	MILE	RUMBLE STRIPES, EDGE LINE (CONCRETE)		
1.03			2.39					618	43000	3.42	MILE	RUMBLE STRIPES, CENTER LINE (ASPHALT CONCRETE)		
0.02								618	44000	0.02	MILE	RUMBLE STRIPES, CENTER LINE (CONCRETE)		
1.03			2.39					874	21000	3.42	MILE	LONGITUDINAL JOINT PREPARATION		
WATER WORK														
50		83	58					46	638	01130	237	FT	6" WATER MAIN POLYVINYL CHLORIDE PIPE AND FITTINGS, AWWA C900, DR18	
206		133						67	638	01720	406	FT	8" WATER MAIN POLYVINYL CHLORIDE PIPE AND FITTINGS, AWWA C900, DR18	
12		10						47	638	01721	22	FT	8" WATER MAIN POLYVINYL CHLORIDE PIPE AND FITTINGS, AWWA C900, DR18, AS PER PLAN A	P.0848
								47	638	03380	47	FT	16" WATER MAIN POLYVINYL CHLORIDE PIPE AND FITTINGS, AWWA CLASS C905	
15		18						5	638	08706	38	EACH	8" CUTTING-IN SLEEVE	
		60						2	638	01721	60	FT	8" WATER MAIN POLYVINYL CHLORIDE PIPE AND FITTINGS, AWWA C900, DR18, AS PER PLAN B	P.0848
		4						2	638	09390	6	EACH	8" X 6" TAPPING SLEEVE, VALVE AND VALVE BOX	
								4	638	09910	4	EACH	16" X 16" TAPPING SLEEVE, VALVE AND VALVE BOX	
1		1	4					4	638	10300	6	EACH	FIRE HYDRANT EXTENDED AND ADJUSTED TO GRADE	
6		4	1					4	638	10400	11	EACH	FIRE HYDRANT ADJUSTED TO GRADE, INCLUDES VALVE	
2		5	4					4	638	10480	15	EACH	FIRE HYDRANT REMOVED	
5		6	2					4	638	10800	17	EACH	VALVE BOX ADJUSTED TO GRADE	
6		11						4	638	11100	21	EACH	METER AND CHAMBER REMOVED AND RESET	
1		2						2	638	11200	5	EACH	METER, SETTING, STOP AND CHAMBER	
3		5	4					4	SPECIAL	63820538	16	EACH	6" GATE VALVE WITH VALVE BOX RESILIENT WEDGE GATE VALVE	P.0848
8		12						3	SPECIAL	63820554	23	EACH	8" GATE VALVE WITH VALVE BOX RESILIENT WEDGE GATE VALVE	P.0848
2		5						4	SPECIAL	63820750	11	EACH	6" FIRE HYDRANT AMERICAN AVK 2780 OR MUELLER SUPER CENTURION A-423-250	P.0848
36		125							SPECIAL	63820826	161	FT	RETAP, RECONNECT AND EXTEND 1" POLYETHYLENE WATER SERVICE CONNECTION, CTS PIPE AND CONSTRUCTED OF HDPE	P.0848
34		44						12	638	06500	90	FT	12" STEEL PIPE ENCASEMENT, OPEN CUT	
LS		LS	LS					LS	638	98100	LS		WATER WORK, MISC.: AWWA STANDARD TESTING	P.0848
								10	638	98600	10	FT	WATER WORK, MISC.: 16" WATER MAIN PIPE CONCRETE ENCASEMENT IN PLACE, SEE ERIE COUNTY STANDARDS	P.0848
SANITARY SEWER														
11		17	8					611	99654	36	EACH	MANHOLE ADJUSTED TO GRADE		

GENERAL SUMMARY

DESIGN AGENCY
TRANSYSTEMS
 400 W. NATIONWIDE BLVD., STE. 225
 COLUMBUS, OHIO 43215

DESIGNER
JIW

REVIEWER

GHM 10/27/25

PROJECT ID

116570

SHEET TOTAL

P.0292 1106

ERI-US 0006-CONNECTIVITY CORRIDOR

MODEL: Sheet 7.1 PAPER: 34x22 (in.) DATE: 4/30/2026 TIME: 3:29:36 PM PLTDRY: OHDOT_PDF.plt USER: hontautate@ghmc.com WORKSPACE: OHDOTCEV02 WORKSET: 116570 PRODUCT: OpenRoadsDesigner 24.00.00.205
 p:\ohdot\pwr\benley.com\ohdot\pwr-02\Documents\01 Active Projects\District 03\ERF\116570\402-Engineering_TransSystems\Roadway\Sheets\116570_G0001.dgn

PART.								ITEM	ITEM EXT	GRAND TOTAL	UNIT	DESCRIPTION	SEE SHEET NO.
01/SAF	02/SAF	03/S50	04/ENH	05/ENH	06/BRO	07/BRO	08/NFA						
												STRUCTURE OVER 20 FOOT SPAN (SFN 2201674)	
			478					202	23501	478	SY	WEARING COURSE REMOVED, AS PER PLAN	P.1017
			540					407	10000	540	GAL	TACK COAT	
			14					442	10000	14	CY	ASPHALT CONCRETE SURFACE COURSE, 12.5 MM, TYPE A (446)	
			18					442	10081	18	CY	ASPHALT CONCRETE INTERMEDIATE COURSE, 12.5 MM, TYPE A (446), AS PER PLAN	P.1017
			5					442	22001	5	CY	ASPHALT CONCRETE SURFACE COURSE, 9.5 MM, TYPE A (449), AS PER PLAN	P.1017
			9					442	22401	9	CY	ASPHALT CONCRETE INTERMEDIATE COURSE, 19 MM, TYPE A (449), AS PER PLAN	P.1017
			400					509	10000	400	LB	EPOXY COATED STEEL REINFORCEMENT	
			1,218					509	30020	1,218	FT	NO. 4 DEFORMED GFRP REINFORCEMENT	
			32					510	10000	32	EACH	DOWEL HOLES WITH NONSHRINK, NONMETALLIC GROUT	
			84					512	10100	84	SY	SEALING OF CONCRETE SURFACES (EPOXY-URETHANE)	
			135					512	33011	135	SY	TYPE 3 WATERPROOFING, AS PER PLAN	P.1017
			62					516	31000	62	FT	JOINT SEALER	
			19					516	13600	19	SF	1" PREFORMED EXPANSION JOINT FILLER	
						68		517	75600	68	FT	DEEP BEAM BRIDGE RETROFIT RAILING	
						68		517	75601	68	FT	DEEP BEAM BRIDGE RETROFIT RAILING, AS PER PLAN	P.1017
			62					SPECIAL	51822300	62	FT	STEEL DRIP STRIP	P.1017
			57					607	39901	57	FT	VANDAL PROTECTION FENCE, 6' STRAIGHT, COATED FABRIC, AS PER PLAN	P.1017
			94					622	90000	94	FT	BARRIER, MISC.: MODIFIED CONCRETE BARRIER, SINGLE SLOPE, TYPE D	P.1023
			43					846	00111	43	CF	POLYMER MODIFIED ASPHALT EXPANSION JOINT SYSTEM, AS PER PLAN	P.1017
												STRUCTURE OVER 20 FOOT SPAN (SFN 2201739)	
			LS					202	11203	LS		PORTIONS OF STRUCTURE REMOVED, OVER 20 FOOT SPAN, AS PER PLAN	P.1026
			LS					503	11101	LS		COFFERDAMS AND EXCAVATION BRACING, AS PER PLAN	P.1031
			251					503	22200	251	CY	UNCLASSIFIED EXCAVATION, INCLUDING ROCK AND/OR SHALE	
			7,679					509	10000	7,679	LB	EPOXY COATED STEEL REINFORCEMENT	
			124					510	10000	124	EACH	DOWEL HOLES WITH NONSHRINK, NONMETALLIC GROUT	
			69					511	43510	69	CY	CLASS QC1 CONCRETE, ABUTMENT INCLUDING FOOTING	
			34					512	10100	34	SY	SEALING OF CONCRETE SURFACES (EPOXY-URETHANE)	
			16					512	33000	16	SY	TYPE 2 WATERPROOFING	
			LS					513	95020	LS		STRUCTURAL STEEL, MISC.: PREFABRICATED TRUSS BRIDGE	P.1027
			22					516	10501	22	FT	STRUCTURAL EXPANSION JOINT INCLUDING ELASTOMERIC COMPRESSION SEAL, AS PER PLAN	P.1037
			22					517	74001	22	FT	RAILING, TIMBER, AS PER PLAN	P.1038
			43					518	20000	43	SY	PREFABRICATED GEOCOMPOSITE DRAIN	
			2					518	21200	2	CY	POROUS BACKFILL WITH GEOTEXTILE FABRIC	
			37					518	40000	37	FT	6" PERFORATED CORRUGATED PLASTIC PIPE	
			39					518	40010	39	FT	6" NON-PERFORATED CORRUGATED PLASTIC PIPE, INCLUDING SPECIALS	
			35					601	34200	35	CY	ROCK CHANNEL PROTECTION, TYPE C WITHOUT FILTER	
												STRUCTURE OVER 20 FOOT SPAN (SFN 2201836)	
				1,624				509	10000	1,624	LB	EPOXY COATED STEEL REINFORCEMENT	
				4,594				509	30020	4,594	FT	NO. 4 DEFORMED GFRP REINFORCEMENT	
				117				510	10000	117	EACH	DOWEL HOLES WITH NONSHRINK, NONMETALLIC GROUT	
				313				512	10100	313	SY	SEALING OF CONCRETE SURFACES (EPOXY-URETHANE)	
				10				516	13200	10	SF	½" PREFORMED EXPANSION JOINT FILLER	
				10				516	13600	10	SF	1" PREFORMED EXPANSION JOINT FILLER	
								607	39901	591	FT	VANDAL PROTECTION FENCE, 6' STRAIGHT, COATED FABRIC, AS PER PLAN	P.1041
								SPECIAL	60740000	591	FT	VANDAL PROTECTION FENCE REMOVED, AS PER PLAN	P.1041
				347				622	90000	347	FT	BARRIER, MISC.: MODIFIED CONCRETE BARRIER, SINGLE SLOPE, TYPE D	P.1041
								625	32000	2	EACH	GROUND ROD	

GENERAL SUMMARY

DESIGN AGENCY
TRANSYSTEMS
 400 W. NATIONWIDE BLVD., STE. 225
 COLUMBUS, OHIO 43215

DESIGNER
JIW

REVIEWER
GHM 10/27/25

PROJECT ID
116570

SHEET TOTAL
P.0298 1106

ERI-US 0006-CONNECTIVITY CORRIDOR

MODEL: Sheet 7 PAPER: 34x22 (in.) DATE: 4/29/2026 TIME: 3:58:01 PM PLTDRY: OHDOT_PDF_Levels.plt PENTBL: OHDOT_Pen.tbl USER: hthornon@gfinc.com WORKSPACE: OHDOTCv02 WORKSET: 116570 PRODUCT: OpenRoadsDesigner 24.00.02.25
 p:\ohdot-pw-bentley.com\ohdot-pw-02\Documents\01 Active Projects\District 03\ERI\116570\402-Engineering_Transystems\Roadway\Sheets\116570_GS001.dgn

ESTIMATED QUANTITIES SHEET NO.	202	202	202	202	202	202	202	202	202	202	202	202	202	202	202	202	202	202	202	202	202	202	
	HEADWALL REMOVED EACH	PAVEMENT REMOVED (ASPHALT) SY	PAVEMENT REMOVED (CONCRETE) SY	WALK REMOVED SF	CURB REMOVED FT	CURB AND GUTTER REMOVED FT	PIPE REMOVED, 24" AND UNDER FT	PIPE REMOVED, OVER 24" FT	GUARDRAIL REMOVED FT	MAILBOX REMOVED EACH	MANHOLE REMOVED EACH	CATCH BASIN REMOVED EACH	FENCE REMOVED FT	REMOVAL MISC.: LANDSCAPE ROCK EACH	REMOVAL MISC.: PRIVATE SIGN EACH	REMOVAL MISC.: PRIVATE LIGHT POLE EACH	REMOVAL MISC.: BOULDER EACH	REMOVAL MISC.: YARD ART EACH	REMOVAL MISC.: FLAG POLE EACH	REMOVAL MISC.: BILLBOARD EACH	REMOVAL MISC.: WOOD POST EACH		
P.0306	1	8182.9	61.2			91.3	472.3	60.5	439.0	21	2	2		20	10	3		1					
P.0307			399.6		139.4		1743.2			8		1	54.3	46	5		19	1					
P.0308		10850.2	131.6	309.9	272.1	1448.0	1422.3		470.9	4	3	5		5	1		4						
P.0309			1662.6	724.6	646.2	766.9	634.7	13.0		1	1	4			9		1		1	1	2		
P.0310	4	19627.9	153.8	9564.3	434.8	824.8	171.9		1607.3	3		5	878.7				3						
P.0311			48.5		157.0	473.3	386.5		1802.6	4		8		4	1		8						
TOTALS CARRIED TO GENERAL SUMMARY																							
SUBTOTAL FOR PARTICIPATION 01/SAF	0	20984	353	942	3417	1197	13	1262	5	1	25	155	0	8	0	4	0	0	0	2			
SUBTOTAL FOR PARTICIPATION 02/SAF	2	8906	0	76	0	54	0	1786	0	0	13	0	0	0	0	0	0	0	0	0			
SUBTOTAL FOR PARTICIPATION 03/S50	1	9020	0	0	0	2367	61	718	13	1	2	54	41	7	0	13	1	0	0	0			
SUBTOTAL FOR PARTICIPATION 04/ENH	0	2209	10246	551	188	1125	0	192	23	4	4	724	34	11	3	18	1	1	1	0			
SUBTOTAL FOR PARTICIPATION 05/ENH	2	0	0	81	0	89	0	362	0	0	4	0	0	0	0	0	0	0	0	0			
GRAND TOTAL	5	41,118	10,599	1,650	3,604	4,831	74	4,320	41	6	25	933	75	26	3	35	2	1	1	2			

REMOVAL SUBSUMMARY

DESIGN AGENCY
TRANSYSTEMS
 400 W. NATIONWIDE BLVD., STE 225
 COLUMBUS, OHIO 43216

DESIGNER
 JIW

REVIEWER
 GHM 10/27/25

PROJECT ID
 116570

SHEET TOTAL
 P.0305 1106

DRAINAGE ESTIMATED QUANTITIES SHEET NO.	601	601	602	611	611	611	611	611	611	611	611	611	611	611	611	611	611	611
	TIED CONCRETE BLOCK MAT WITH TYPE 2 UNDERLAYMENT	ROCK CHANNEL PROTECTION, TYPE C WITH GEOTEXTILE FABRIC	CONCRETE MASONRY	4" CONDUIT, TYPE B, 707.31	6" CONDUIT, TYPE B	6" CONDUIT, TYPE B, 707.42	8" CONDUIT, TYPE B, 707.31	12" CONDUIT, TYPE B	12" CONDUIT, TYPE B, 707.33	12" CONDUIT, TYPE C	15" CONDUIT, TYPE B	15" CONDUIT, TYPE B, 707.42	15" CONDUIT, TYPE B, AS PER PLAN, INCLUDES ROCK EXCAVATION	15" CONDUIT, TYPE C	15" CONDUIT, TYPE F, 707.05 TYPE C, 707.21, OR 707.33	18" CONDUIT, TYPE B	18" CONDUIT, TYPE B, 706.02	
	SY	CY	CY	FT	FT	FT	FT	FT	FT	FT	FT	FT	FT	FT	FT	FT	FT	FT
P.0326				5			10	1674	5		1120	5	304			260	5	
P.0327		2	0.46					196	12	12								
P.0328	94	2	1.14	17	98	16		579			159	5	58		254			
P.0329	99	1	1.55					641			285		12	51				
TOTALS CARRIED TO GENERAL SUMMARY																		
SUBTOTAL FOR PARTICIPATION 01/SAF	12	3	1.07	17	98			964	12	12	64	5		24	254			
SUBTOTAL FOR PARTICIPATION 02/SAF	181		1.62					45			380		70	27				
SUBTOTAL FOR PARTICIPATION 03/S50		1.6	0.46	5			10	1724	5		1120	5	303.8		260	5		
SUBTOTAL FOR PARTICIPATION 04/ENH						16		357										
GRAND TOTALS	193	5	3	22	98	16	10	3090	17	12	1564	10	304	70	51	514	5	

DRAINAGE ESTIMATED QUANTITIES SHEET NO.	611	611	611	611	611	611	611	611	611	611	611	611	611	611	611	611	611	611	
	18" CONDUIT, TYPE C	24" CONDUIT, TYPE B	24" CONDUIT, TYPE F, 707.05 TYPE C, 707.21, OR 707.33	30" CONDUIT, TYPE B	30" CONDUIT, TYPE C	CATCH BASIN, NO. 3	CATCH BASIN, NO. 3A	CATCH BASIN, NO. 5	CATCH BASIN, NO. 6	CATCH BASIN, NO. 2-2B	CATCH BASIN, NO. 2-3	INLET, SIDE DITCH	CATCH BASIN ADJUSTED TO GRADE	CATCH BASIN ADJUSTED TO GRADE, AS PER PLAN	CATCH BASIN RECONSTRUCTED TO GRADE, AS PER PLAN	MANHOLE, NO. 3	MANHOLE ADJUSTED TO GRADE		
	FT	FT	FT	FT	FT	EACH	EACH	EACH	EACH	EACH	EACH	EACH	EACH	EACH	EACH	EACH	EACH		
P.0326	480	95	33			3	6	6	1	14	1								
P.0327		1010		588			6	3	1		2		1	2		3	4		
P.0328	57	276			24	3	12		2	3		1	5	3	1	6			
P.0329						4	7		1										
TOTALS CARRIED TO GENERAL SUMMARY																			
SUBTOTAL FOR PARTICIPATION 01/SAF	57	276		212	24	3	16		2	2			4	3	1	8	2		
SUBTOTAL FOR PARTICIPATION 02/SAF						4	7		1										
SUBTOTAL FOR PARTICIPATION 03/S50	480	1105	33	376		3	6	9	1	14	3		1	2		1	2		
SUBTOTAL FOR PARTICIPATION 04/ENH							2		1	1		1	1						
GRAND TOTALS	537	1381	33	588	24	10	31	9	5	17	3	1	6	5	1	9	4		

UNDERDRAIN QUANTITIES SHEET NO.

605

611

4" BASE PIPE UNDERDRAINS

4" CONDUIT, TYPE F FOR UNDERDRAIN OUTLET

FT

FT

P.0340

8158

360

P.0341

8045

313

P.0342

3230

196

P.0343

4773

286

P.0344

4191

273

P.0345

7223

208

TOTALS CARRIED TO GENERAL SUMMARY

SUBTOTAL FOR PARTICIPATION 01/SAF

8266

487

SUBTOTAL FOR PARTICIPATION 02/SAF

6810

273

SUBTOTAL FOR PARTICIPATION 03/S50

12827

587

SUBTOTAL FOR PARTICIPATION 04/ENH

7354

260

SUBTOTAL FOR PARTICIPATION 05/ENH

363

29

GRAND TOTALS

35620

1636

UNDERDRAIN SUBSUMMARY

DESIGN AGENCY
TRANSYSTEMS
 400 W. NATIONWIDE BLVD., STE 225
 COLUMBUS, OHIO 43215

DESIGNER
MHT

REVIEWER
GHM 10/27/25

PROJECT ID
116570

SHEET TOTAL
P.0339 1106

ERI-US 0006-CONNECTIVITY CORRIDOR

MODEL: Sheet 4 PAPER SIZE: 34x22 (in.) DATE: 4/29/2026 TIME: 3:00:26 PM PLTDRY: OHDOT_PDF_Levels.plt PENTBL: OHDOT_Pen.tbl USER: nrtomson@gflinc.com WORKSPACE: OHDOTCEV02 WORKSET: 116570 PRODUCT: OpenRoadsDesigner 24.00.02.25
 pvc:\ohdot-pw-bentley.com\ohdot-pw-02\Documents\01 Active Projects\District 03\Erle\116570\402-Engineering_TransSystems\Drainage\Sheets\116570_DS002.dgn

SHEET NO.	REF NO.	STATION		CHAIN	SIDE	OUTLET ELEVATION	PART.	605	611	FOR INFORMATION ONLY							
		FROM	TO							BENDS AND BRANCHES							
										* DENOTES TO CONNECT TO EXISTING UD							
FT	FT	4" WYE	4" X 11.25" BEND	4" X 22.50" BEND	4" X 45" BEND	4" X 90" BEND	4" X 4" TEE	4" X 4" CROSS									
P.0420	UD-174	1808+04.00	1807+82.00	CLP_US006	LT	589.51	04	31	4						1		
P.0420	UD-68	1808+15.00	1807+76.00	CLP_US006	LT	589.83	01	17									
P.0420	UD-69	1809+48.00	1810+99.00	CLP_US006	RT	588.01	01						1				
P.0420	UD-175	1809+61.00	1809+93.00	CLP_US006	LT	589.39	04	33	4						1		
P.0420	UD-176	1809+51.00	1809+87.00	CLP_US006	RT	588.67	04	80	4						1		
P.0420	UD-70	1809+56.00	1809+93.00	CLP_US006	LT	589.12	01	33	10	1							
P.0420	UD-71	1809+60.00	1811+98.00	CLP_US006	LT	587.57	01	227	18						1	1	
P.0420	UD-72	1809+62.00	1810+95.00	CLP_US006	RT	588.11	01	64	10						1	1	
P.0421	UD-73	1810+00.00	1811+42.00	CLP_US006	LT	588.20	01	138	10						1		
P.0421	UD-74	1811+05.00	1812+02.00	CLP_US006	RT	587.36	01	89	10						1		
P.0421	UD-75	1811+50.00	1812+57.00	CLP_US006	LT	EX UD	01	110								1	
P.0421	UD-76	1812+10.00	1812+64.00	CLP_US006	RT	EX UD	01	58				1					
P.0424	UD-180	121+85.00	125+40.00	CLP_RyeBeachS	RT	597.63	04	346	13						1		
P.0424	UD-181	125+95.00	125+41.00	CLP_RyeBeachS	RT	597.63	04	45	12						1		
P.0424	UD-182	126+05.00	127+21.00	CLP_RyeBeachS	RT	597.51	04	108	10						1		
P.0424	UD-183	132+50.00	127+21.00	CLP_RyeBeachS	RT	597.51	04	523	10						1		
P.0424	UD-183A	132+43.33	132+68.33	CLP_RyeBeachS	RT	EX UD	04	25									
P.0425	UD-184	133+11.00	135+71.00	CLP_RyeBeachS	RT	597.41	04	261	16						1		
P.0425	UD-185	137+13.00	139+18.00	CLP_RyeBeachS	RT	597.42	04	206	5						1		
P.0431	UD-85	143+96.00	139+90.00	CLP_RyeBeachS	RT	EX UD	01	409								1	
P.0431	UD-86	140+13.00	139+90.00	CLP_RyeBeachS	RT	EX UD	01	23								1	
P.0431	UD-186	140+13.00	139+97.00	CLP_RyeBeachS	RT	596.65	04	16	6						1		
P.0431	UD-87	140+14.00	139+98.00	CLP_RyeBeachS	LT	596.76	01	8	10						1		
P.0431	UD-88	141+70.00	140+20.00	CLP_RyeBeachS	RT	596.55	01	144	10								
P.0431	UD-187	141+70.00	140+23.00	CLP_RyeBeachS	RT	596.59	04	146	10	1					1		
P.0431	UD-89	141+73.00	140+22.00	CLP_RyeBeachS	LT	596.75	01	141	10						1		
P.0432	UD-90	143+92.00	141+77.00	CLP_RyeBeachS	RT	599.01	01	208	10								
P.0432	UD-188	143+79.00	141+79.00	CLP_RyeBeachS	RT	599.04	04	193	9	1					1		
P.0432	UD-91	144+11.00	141+80.00	CLP_RyeBeachS	LT	599.27	01	254	10						1		
P.0432	UD-85A	143+10.00	142+99.00	CLP_RyeBeachS	LT/RT	603.89	01	74	19						2		
P.0432	UD-92	+54.00	3+09.00	CLP_REFCC_D	LT	606.19	02	173	36	1						1	
P.0432	UD-93	0+68.00	2+92.00	CLP_REFCC_D	LT	606.48	02	175									
P.0432	UD-205	0+07.75	2+37.80	CLP_REFCC_D	LT	606.48	02	127	10						1		
P.0432	UD-206	4+69.84	2+37.80	CLP_REFCC_D	LT	607.16	02	121								1	
TOTALS CARRIED TO UNDERDRAIN SUBSUMMARY								4773	286								

UNDERDRAIN QUANTITIES	DESIGN AGENCY
	TRANSYSTEMS 400 W. NATIONWIDE BLVD., STE 225 COLUMBUS, OHIO 43215
	DESIGNER
	MHT
REVIEWER	
GHM 10/27/25	
PROJECT ID	
116570	
SHEET TOTAL	
P.0343 1106	

ERI-US 0006-CONNECTIVITY CORRIDOR

MODEL: Sheet 4 PAPER SIZE: 34x22 (in.) DATE: 4/30/2026 TIME: 8:20:36 AM PLTDRY: OHDOT_PDF.plt PENTBL: OHDOT_Pen.tbl USER: rgreve@gtllinc.com WORKSPACE: OHDOTCEv02 WORKSET: 116570 PRODUCT: OpenRoadsDesigner 24.00.02.25
 pvc:\ohdot\pvc\benley.com\ohdot\pvc\02\Documents\01 Active Projects\District 03\ERF\116570\402\Engineering_TransSystems\Utilities\Sheets\116570_US001.dgn

ESTIMATED QUANTITIES SHEET NO.

	202	202	202	611	638	638	638	638	638	638	638	638	638	638	638	638	SPECIAL	SPECIAL	SPECIAL	SPECIAL	638	638	638	638
	PIPE REMOVED, 24" AND UNDER	METER VAULT REMOVED	VALVE BOX REMOVED, INCLUDES VALVE	MANHOLE ADJUSTED TO GRADE	6" WATER MAIN POLYVINYL CHLORIDE PIPE AND FITTINGS, AWWA C900, DR18	8" WATER MAIN POLYVINYL CHLORIDE PIPE AND FITTINGS, AWWA C900, DR18	8" WATER MAIN POLYVINYL CHLORIDE PIPE AND FITTINGS, AWWA C900, DR18, AS PER PLAN B	8" CUTTING-IN SLEEVE	8" X 6" TAPPING SLEEVE, VALVE AND VALVE BOX	FIRE HYDRANT EXTENDED AND ADJUSTED TO GRADE	FIRE HYDRANT ADJUSTED TO GRADE, INCLUDES VALVE	FIRE HYDRANT REMOVED	VALVE BOX ADJUSTED TO GRADE	METER AND CHAMBER REMOVED AND RESET	METER, SETTING, STOP AND CHAMBER	6" GATE VALVE WITH VALVE BOX, RESILIENT WEDGE GATE VALVE	8" GATE VALVE WITH VALVE BOX, RESILIENT WEDGE GATE VALVE	6" FIRE HYDRANT, AMERICAN AVK 2780 OR MUELLER SUPER CENTURION A-423-250	RETap, RECONNECT AND EXTEND 1" POLYETHYLENE WATER SERVICE CONNECTION, CTS PIPE AND CONSTRUCTED OF HDPE	12" STEEL PIPE ENCASMENT, OPEN CUT	WATER WORK, MISC.:AWWA STANDARD TESTING	8" WATER MAIN POLYVINYL CHLORIDE PIPE AND FITTINGS, AWWA C900, DR18, AS PER PLAN A	WATER WORK, MISC.:16" WATER MAIN CONCRETE ENCASMENT IN PLACE, SEE ERIE COUNTY STANDARDS	
	FT	EACH	EACH	EACH	FT	FT	FT	EACH	EACH	EACH	EACH	EACH	EACH	EACH	EACH	EACH	EACH	EACH	EACH	FT	FT	LS	FT	FT
P.0364	393	3	5	6	71	225		21		1	6	4	4	7	3	5	12	4	150	42	LS	22		
P.0365	272	1	3	7	62	181	60	15		1	4	3	5	12	1	3	11	3	11	48	LS			
P.0366	46	1	8	7	104			2	6	4	1	8	8	2	1	8		4			LS			10
SUBTOTAL FOR PARTICIPATION 01/SAF	337.00	3.00	3.00	11.00	50.00	273.00		18.00		1.00	6.00	2.00	8.00	10.00	3.00	3.00	11.00	2.00	36.00	46.00	LS	12.00		10.00
SUBTOTAL FOR PARTICIPATION 03/S50	328.00	2.00	5.00	5.00	82.50	133.00	60.00	18.00		1.00	4.00	5.00	6.00	11.00	2.00	5.00	12.00	5.00	125.00	44.00	LS	10.00		
SUBTOTAL FOR PARTICIPATION 04/ENH	22.00		4.00	1.00	58.00				4.00	4.00	1.00	4.00	2.00			4.00					LS			
SUBTOTAL FOR PARTICIPATION 08/NFA	24.00		4.00	3.00	46.00			2.00	2.00			4.00	1.00			4.00		4.00			LS			
TOTALS CARRIED TO GENERAL SUMMARY	711	5	16	20	237	406	60	38	6	6	11	15	17	21	5	16	23	11	161	90	LS	22		10

WATER SUBSUMMARY

DESIGN AGENCY
TRANSYSTEMS
 400 W. NATIONWIDE BLVD., STE 225
 COLUMBUS, OHIO 43215

DESIGNER
RJG

REVIEWER
GHM 10/27/25

PROJECT ID
116570

SHEET TOTAL
P.0363 1106

ERI-US 0006-CONNECTIVITY CORRIDOR

MODEL: Sheet 2 PAPER SIZE: 34x22 (in.) DATE: 4/30/2028 TIME: 8:26:28 AM PLTDRY: OHDOT_PDF_Levels.plt PENTBL: OHDOT_Pen.tbl USER: rgrave@gfinc.com WORKSPACE: OHDOTCE.v02 WORKSET: 116570 PRODUCT: OpenRoadsDesigner 24.00.02.25 pwc:\ohdot-pw-bentley.com\ohdot-pw-02\Documents\01 Active Projects\District 03\Erri\116570\402-Engineering_Transystems\Utilities\Sheets\116570_US001.dgn

REF NO.	SHEET NO.	ALIGNMENT	STATION TO STATION		SIDE	PART.	202	202	202	611	638	638	638	638	638	638	638	638	SPECIAL	SPECIAL	SPECIAL	SPECIAL	638	638	638	638	
			FROM	TO			FT	EACH	EACH	EACH	FT	FT	FT	EACH	EACH	EACH	EACH	EACH	EACH	EACH	EACH	EACH	EACH	EACH	FT	FT	LS
			US-6																								
WL-57	P.0858	CLP_US006	1758+35.00		RT	03																					
WL-58	P.0858	CLP_US006	1758+82.32		RT	03																					
WL-59	P.0858	CLP_US006	1760+42.36		RT	03																					
WL-60	P.0858	CLP_US006	1762+10.00		RT	03																					
WL-65	P.0859	CLP_US006	1764+03.63		RT	03																					
WL-66	P.0859	CLP_US006	1764+77.23		RT	03																					
WL-67	P.0859	CLP_US006	1764+81.38		RT	03																					
WL-68	P.0859	CLP_US006	1767+16.48		RT	03																					
WL-69	P.0859	CLP_US006	1767+44.84		RT	03																					
WR-65	P.0859	CLP_US006	1764+03.63		RT	03	4																				
WR-66	P.0859	CLP_US006	1764+81.38		RT	03	19																				
WR-67	P.0859	CLP_US006	1767+44.84		RT	03	19																				
WL-74	P.0860	CLP_US006	1768+92.00		RT	03																					
WL-75	P.0860	CLP_US006	1771+09.82		RT	03																					
WL-76	P.0860	CLP_US006	1772+34.68		RT	03																					
WL-77	P.0860	CLP_US006	1773+66.29		RT	03																					
WL-78	P.0860	CLP_US006	1774+06.32		RT	03																					
WR-74	P.0860	CLP_US006	1773+66.29		RT	03	10																				
WL-83	P.0861	CLP_US006	1779+11.48		RT	03																					
WL-84	P.0861	CLP_US006	1779+86.32		RT	03																					
WR-83	P.0861	CLP_US006	1779+11.48		RT	03	10																				
WL-89	P.0862	CLP_US006	1783+47.23		RT	03																					
WL-90	P.0862	CLP_US006	1785+21.46		LT	03																					
WL-91	P.0862	CLP_US006	1786+99.24		RT	03																					
WR-89	P.0862	CLP_US006	1785+21.46		LT	03	11																				
WL-96	P.0863	CLP_US006	1789+82.65		RT	03																					
WL-97	P.0863	CLP_US006	1791+56.24		RT	03																					
WL-98	P.0863	CLP_US006	1792+66.92		RT	03																					
WL-99	P.0863	CLP_US006	1792+88.26		RT	03																					
WL-100	P.0863	CLP_US006	1783+35.22		LT	03																					
WL-101	P.0863	CLP_US006	1793+46.28		LT	03																					
WL-102	P.0863	CLP_US006	1790+78.85		RT	03																					
WR-96	P.0863	CLP_US006	1792+66.92		RT	03	6																				
WL-107	P.0864	CLP_US006	1794+92.35		LT	01																					
WL-108	P.0864	CLP_US006	1795+44.69		LT	01																					
WL-109	P.0864	CLP_US006	1795+50.61		LT	03																					
WR-107	P.0864	CLP_US006	1795+50.61		LT	03	113																				
WL-114	P.0865	CLP_US006	1804+24.56		RT	03																					
WL-115	P.0865	CLP_US006	1804+24.60		RT	03																					
WL-116	P.0865	CLP_US006	1804+52.20		LT	03																					
WL-117	P.0865	CLP_US006	1805+15.36		LT	01																					
WL-118	P.0865	CLP_US006	1806+11.15		RT	01																					
WL-119	P.0865	CLP_US006	1806+27.35		LT	01																					
WL-120	P.0865	CLP_US006	1807+47.45		LT	01																					
WL-121	P.0865	CLP_US006	1807+60.75		LT	01																					
WR-114	P.0865	CLP_US006	1804+52.20		LT	01	18																				
WR-115	P.0865	CLP_US006	1807+47.45		LT	01	17																				
WR-116	P.0865	CLP_US006	1807+47.45		LT	01	45	1																			
TOTALS CARRIED TO SUBSUMMARY							272	1	3	7	62	181	60	15		1	4	3	5	12	1	3	11	3	11	48	LS

WATER QUANTITIES

DESIGN AGENCY
TRANSYSTEMS
 400 W. NATIONWIDE BLVD., STE 225
 COLUMBUS, OHIO 43216

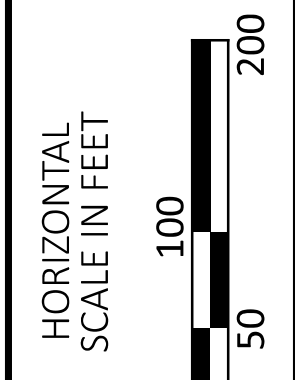
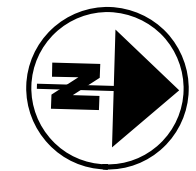
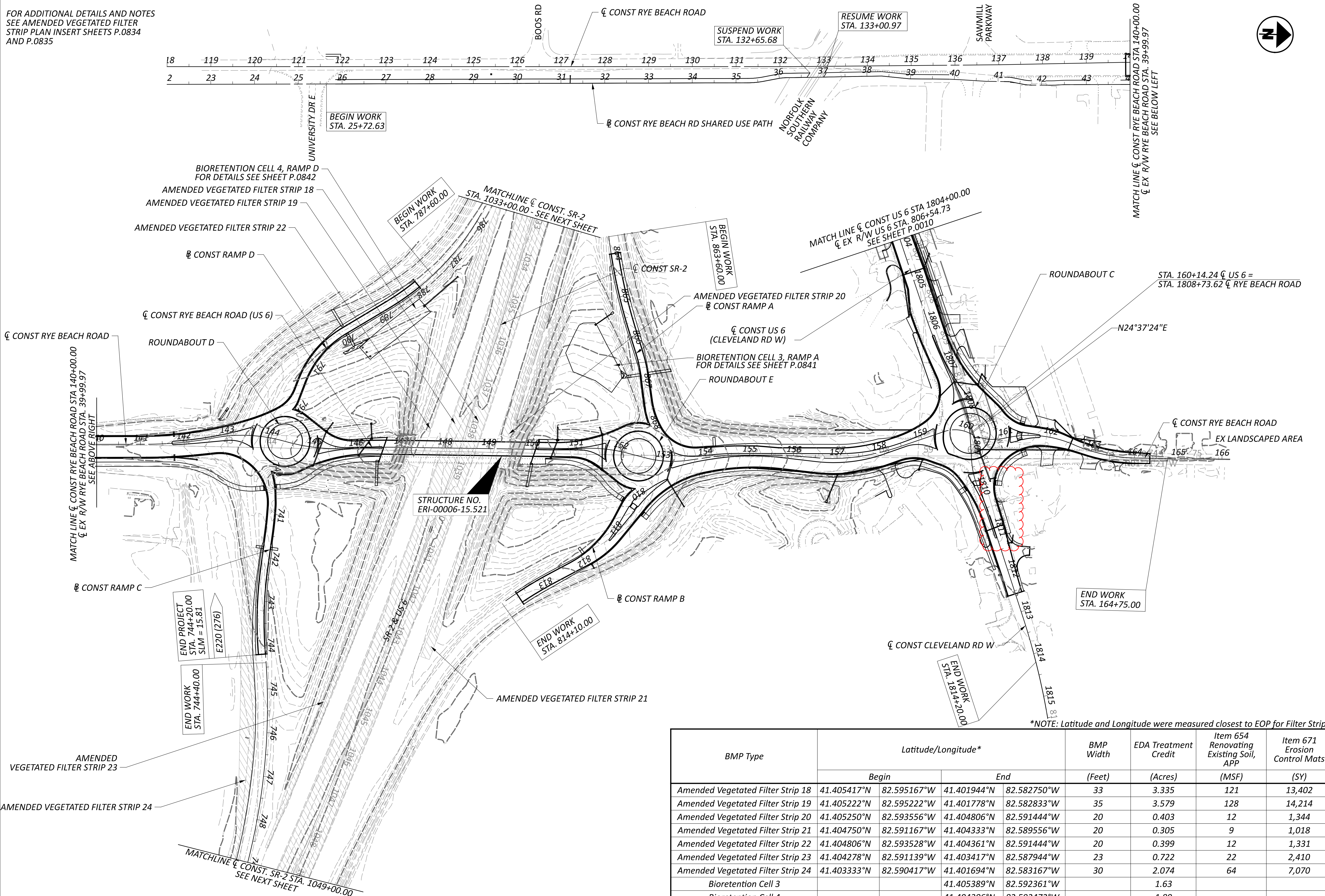
DESIGNER
 RJG

REVIEWER
 GHM 10/27/25

PROJECT ID
 116570

SHEET TOTAL
 P.0365 | 1106

FOR ADDITIONAL DETAILS AND NOTES
 SEE AMENDED VEGETATED FILTER
 STRIP PLAN INSERT SHEETS P.0834
 AND P.0835



PROJECT SITE PLAN
 RYE BEACH ROAD STA 118+00.00 TO STA 166+00.00

*NOTE: Latitude and Longitude were measured closest to EOP for Filter Strips

BMP Type	Latitude/Longitude*				BMP Width (Feet)	EDA Treatment Credit (Acres)	Item 654 Renovating Existing Soil, APP (MSF)	Item 671 Erosion Control Mats (SY)
	Begin	End	Begin	End				
Amended Vegetated Filter Strip 18	41.405417°N	82.595167°W	41.401944°N	82.582750°W	33	3.335	121	13,402
Amended Vegetated Filter Strip 19	41.405222°N	82.595222°W	41.401778°N	82.582833°W	35	3.579	128	14,214
Amended Vegetated Filter Strip 20	41.405250°N	82.593556°W	41.404806°N	82.591444°W	20	0.403	12	1,344
Amended Vegetated Filter Strip 21	41.404750°N	82.591167°W	41.404333°N	82.589556°W	20	0.305	9	1,018
Amended Vegetated Filter Strip 22	41.404806°N	82.593528°W	41.404361°N	82.591444°W	20	0.399	12	1,331
Amended Vegetated Filter Strip 23	41.404278°N	82.591139°W	41.403417°N	82.587944°W	23	0.722	22	2,410
Amended Vegetated Filter Strip 24	41.403333°N	82.590417°W	41.401694°N	82.583167°W	30	2.074	64	7,070
Bioretention Cell 3			41.405389°N	82.592361°W		1.63		
Bioretention Cell 4			41.404306°N	82.592472°W		1.89		
TOTALS CARRIED TO BMP SUBSUMMARY P.0371						14.337	367	40,789

DESIGN AGENCY
TRANSYSTEMS
 400 W. NATIONWIDE BLVD., STE. 225
 COLUMBUS, OHIO 43215

DESIGNER
 MHT

REVIEWER
 GHM 10/27/25

PROJECT ID
 116570

SHEET TOTAL
 P.0373 1106

CURVE DATA CR-12
P.I. = STA. 159+84.95
 $\Delta = 45^{\circ}04'08''$ RT
Dc = 76'01'52"
R = 75.36'
T = 31.27'
L = 59.28'
E = 6.23'
e_{MAX} = NC
PRC = STA. 159+53.68
PT = STA. 160+12.96

CURVE DATA CR-13
P.I. = STA. 160+58.92
 $\Delta = 39^{\circ}11'38''$ LT
Dc = 51'31'31"
R = 111.20'
T = 39.59'
L = 76.07'
E = 6.84'
e_{MAX} = NC
PRC = STA. 160+19.33
PT = STA. 160+95.40

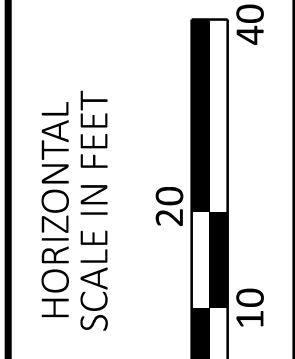
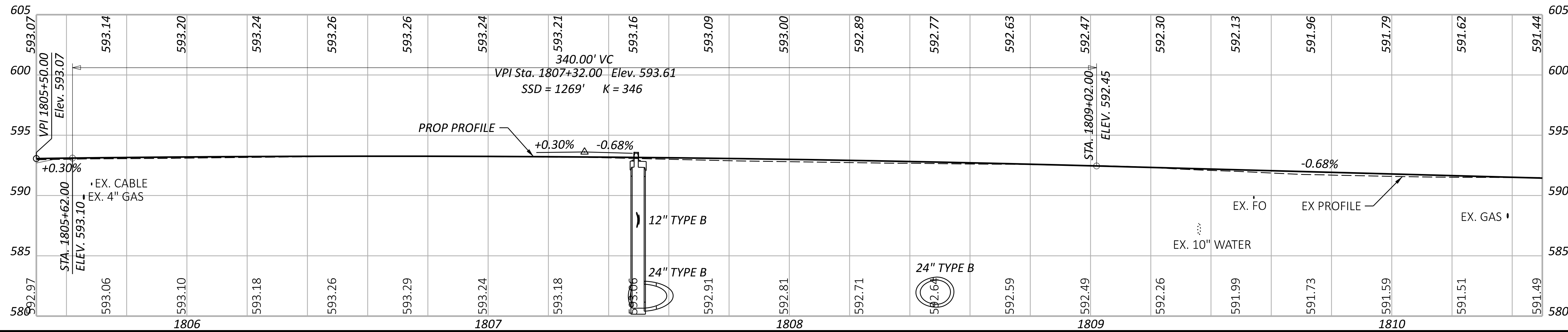
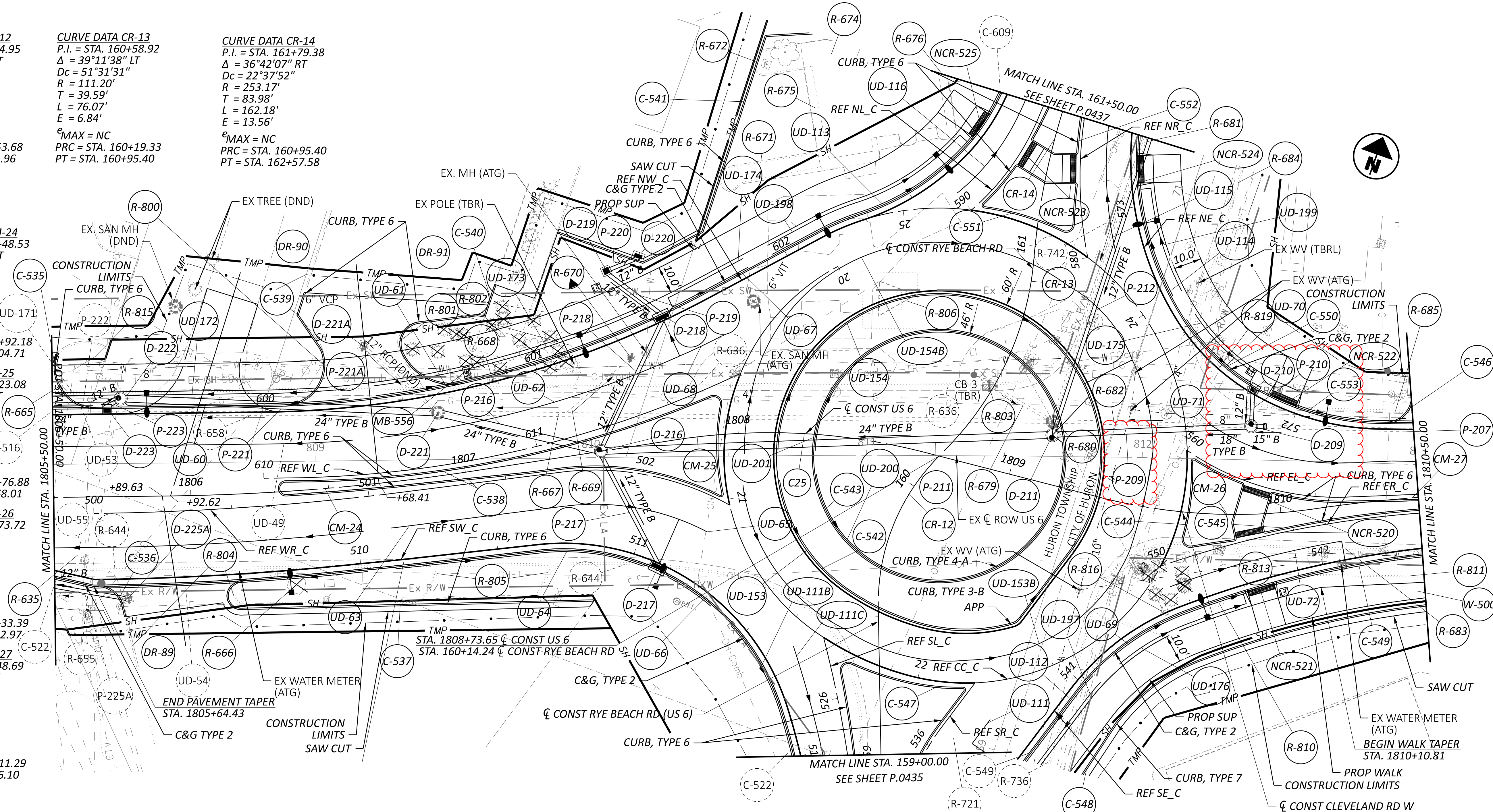
CURVE DATA CR-14
P.I. = STA. 161+79.38
 $\Delta = 36^{\circ}42'07''$ RT
Dc = 22'37'52"
R = 253.17'
T = 83.98'
L = 162.18'
E = 13.56'
e_{MAX} = NC
PRC = STA. 160+95.40
PT = STA. 162+57.58

CURVE DATA CM-24
P.I. = STA. 1806+48.53
 $\Delta = 08^{\circ}03'33''$ LT
Dc = 07'09'43"
R = 800.00'
T = 56.36'
L = 112.53'
E = 1.98'
e_{MAX} = NC
PRC = STA. 1805+92.18
PT = STA. 1807+04.71

CURVE DATA CM-25
P.I. = STA. 1808+23.08
 $\Delta = 23^{\circ}12'25''$ RT
Dc = 25'27'53"
R = 225.00'
T = 46.2'
L = 91.13'
E = 4.69'
e_{MAX} = NC
PRC = STA. 1807+76.88
PT = STA. 1808+68.01

CURVE DATA CM-26
P.I. = STA. 1809+73.72
 $\Delta = 22^{\circ}47'49''$ LT
Dc = 28'38'52"
R = 200.00'
T = 40.32'
L = 79.58'
E = 4.02'
e_{MAX} = NC
PRC = STA. 1809+33.39
PT = STA. 1810+12.97

CURVE DATA CM-27
P.I. = STA. 1810+48.69
 $\Delta = 08^{\circ}10'23''$ RT
Dc = 11'27'33"
R = 500.00'
T = 35.72'
L = 71.32'
E = 1.27'
e_{MAX} = NC
PRC = STA. 1813+11.29
PT = STA. 1817+76.10



PLAN AND PROFILE - US 6
STA. 1805+50.00 TO STA. 1810+50.00

DESIGN AGENCY
TRANSYSTEMS
400 W. NATIONWIDE BLVD., STE 225
COLUMBUS, OHIO 43215

DESIGNER
TK

REVIEWER
GHM 10/27/25

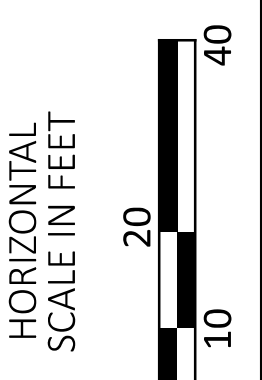
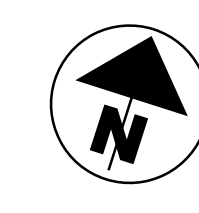
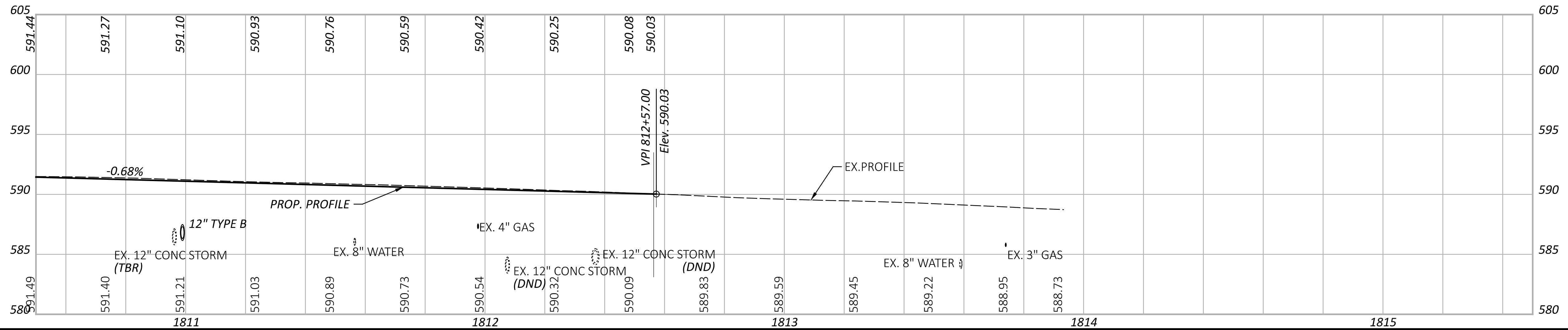
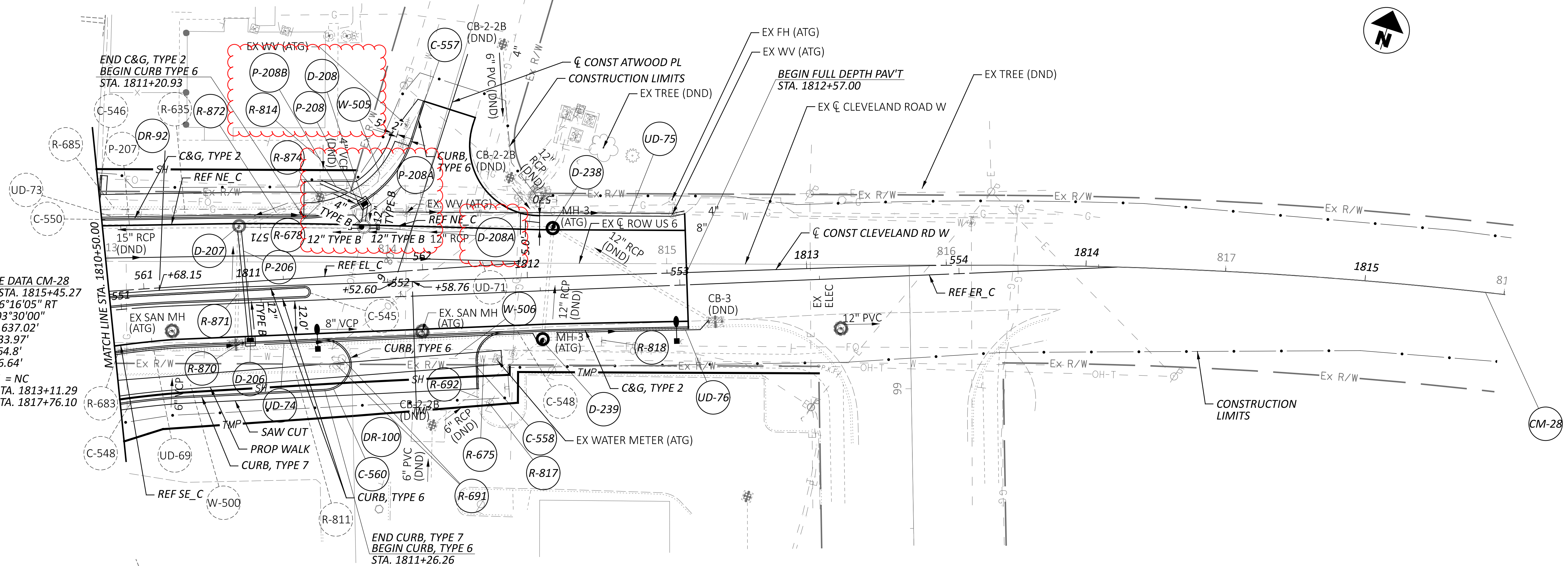
PROJECT ID
116570

SHEET TOTAL
P.0420 1106

ERI-US 0006-CONNECTIVITY CORRIDOR

MODEL: CLP_U006R - US06 PLAN-1 (Sheet) PAPER SIZE: 34x22 (in.) DATE: 4/29/2026 TIME: 1:39:58 PM PLTDRV: OHDOT_PDF.plt USER: hrrhornton@gtfinc.com WORKSPACE: OHDOT\0402-Engineering_TransSystems\Roadway\Sheets\116570_GP002.dgn
 pw:\ohdot\pw.bentley.com\ohdot-pw-02\Documents\01 Active Projects\District 03\Erie\116570\402-Engineering_TransSystems\Roadway\Sheets\116570_GP002.dgn

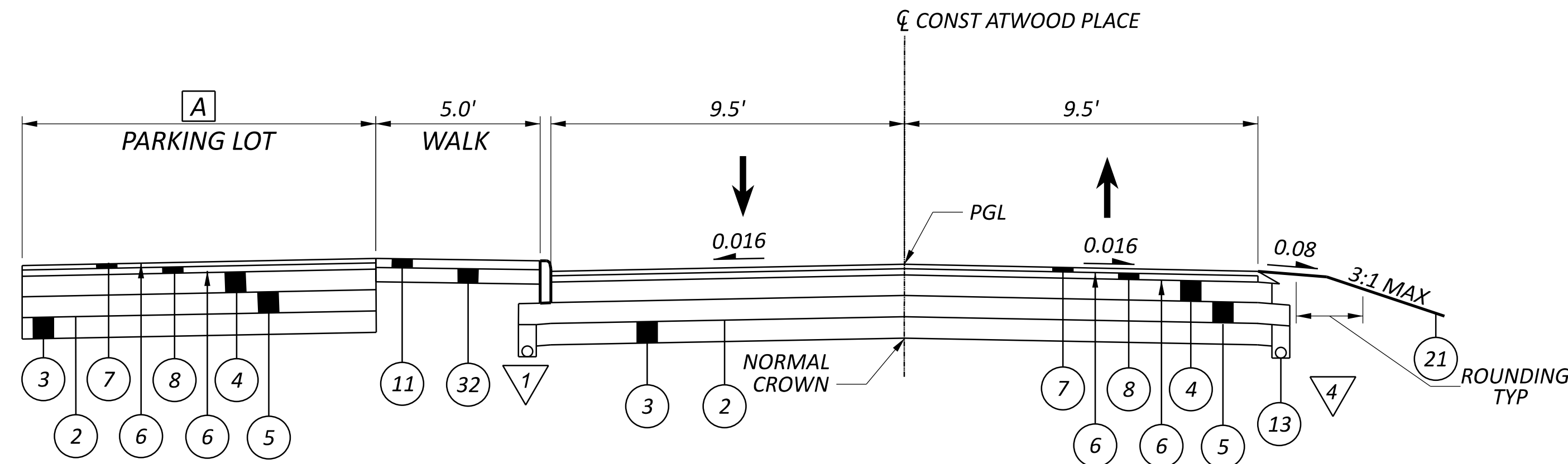
CURVE DATA CM-28
 P.I. = STA. 1815+45.27
 $\Delta = 16^\circ 16' 05''$ RT
 $D_c = 03^\circ 30' 00''$
 $R = 1,637.02'$
 $T = 233.97'$
 $L = 464.8'$
 $E = 16.64'$
 $e_{MAX} = NC$
 PC = STA. 1813+11.29
 PT = STA. 1817+76.10



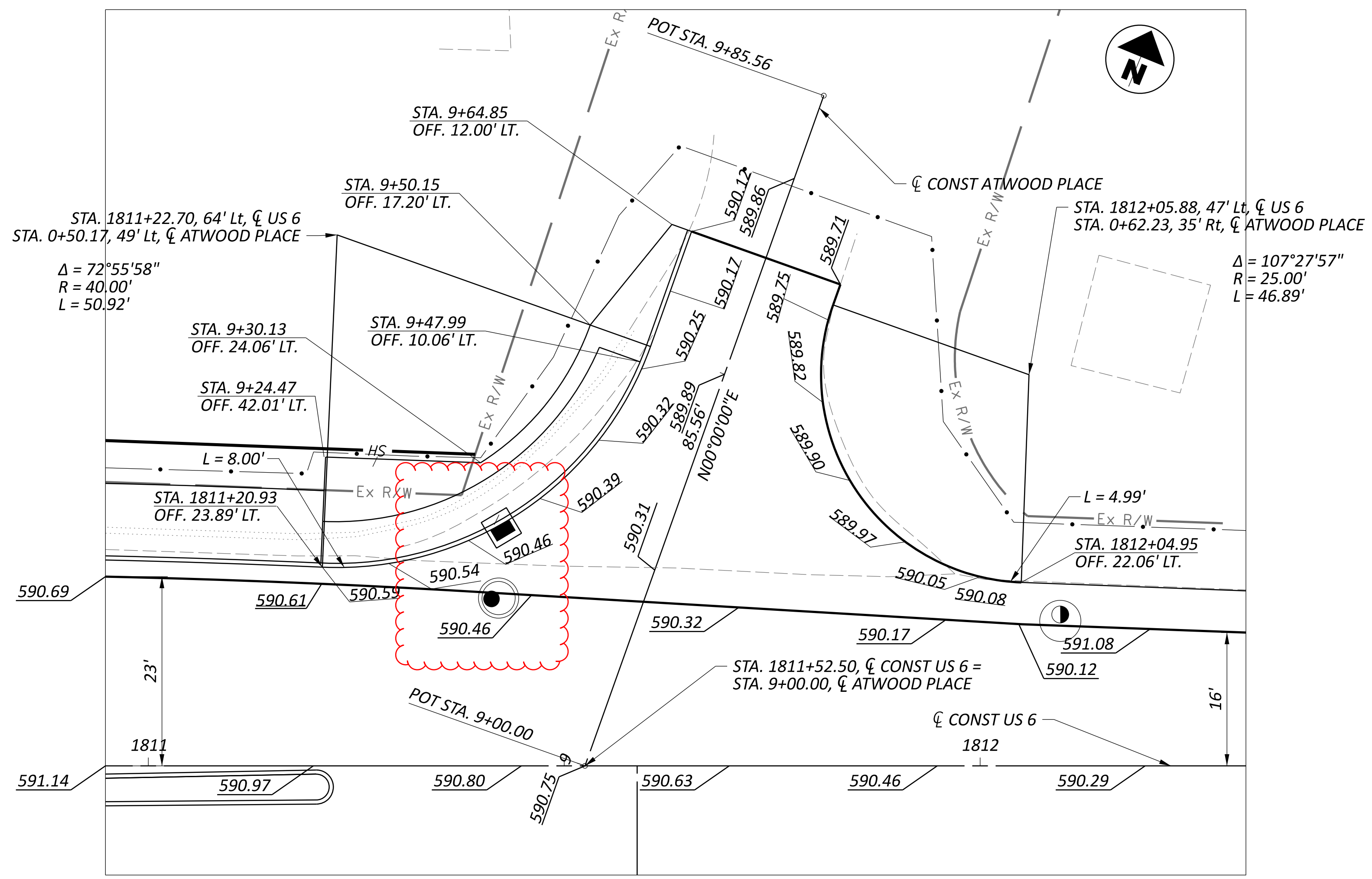
PLAN AND PROFILE - US 6
STA. 1810+50.00 TO END

DESIGN AGENCY	
TRANSYSTEMS	400 W. NATIONWIDE BLVD., STE. 225 COLUMBUS, OHIO 43215
DESIGNER	TK
REVIEWER	GHM
PROJECT ID	116570
SHEET	P.0421
TOTAL	1106

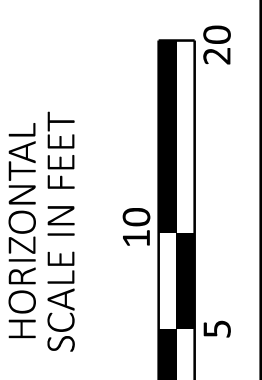
A VARIES 0.0' TO 15.3'
 STA. 9+20.95 TO STA. 9+24.47
 VARIES 15.3' TO 2.0'
 STA. 9+24.47 TO STA. 9+30.13
 2.0'
 STA. 9+30.13 TO STA. 9+47.99
 VARIES 7.2' TO 2.0'
 STA. 9+47.99 TO STA. 9+64.85



NORMAL SECTION
 STA 9+20.95 TO STA 9+64.85



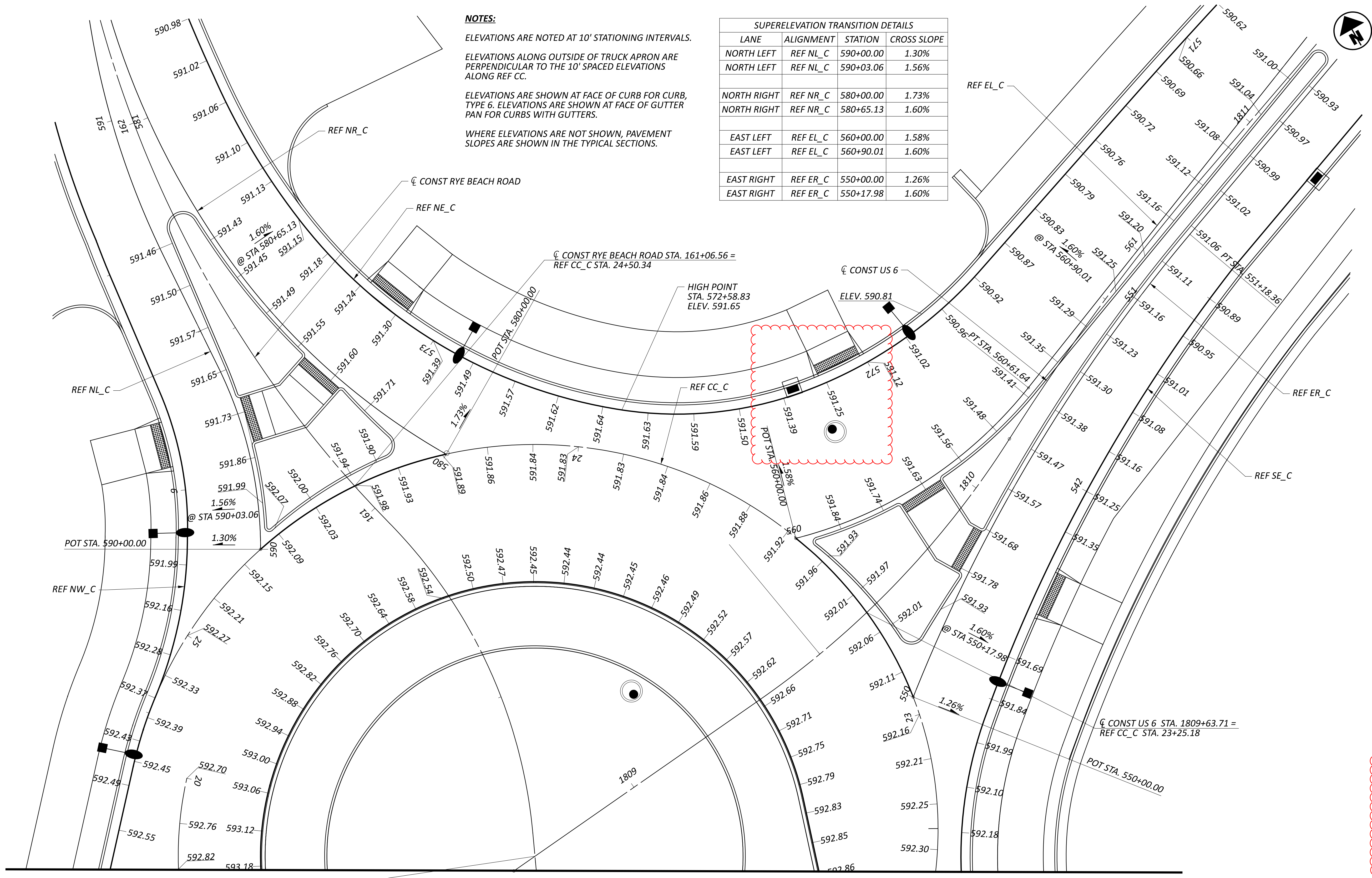
INTERSECTION DETAIL AT ATWOOD PLACE
 SCALE 1" = 10'



INTERSECTION DETAILS
CLATWOOD DRIVE

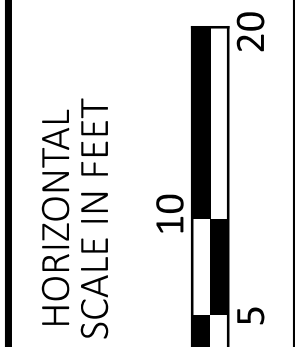
FOR LEGEND ITEMS, SEE SHEET P.0028
 FOR EDGE COURSE DETAILS, SEE SHEET P.0059

DESIGN AGENCY	
TRANSYSTEMS 400 W. NATIONWIDE BLVD., STE 225 COLUMBUS, OHIO 43216	
DESIGNER	TK
REVIEWER	
PROJECT ID	GHM 10/27/25
	116570
SHEET	TOTAL
P.0739	1106



NOTES:
 ELEVATIONS ARE NOTED AT 10' STATIONING INTERVALS.
 ELEVATIONS ALONG OUTSIDE OF TRUCK APRON ARE PERPENDICULAR TO THE 10' SPACED ELEVATIONS ALONG REF CC.
 ELEVATIONS ARE SHOWN AT FACE OF CURB FOR CURB, TYPE 6. ELEVATIONS ARE SHOWN AT FACE OF GUTTER PAN FOR CURBS WITH GUTTERS.
 WHERE ELEVATIONS ARE NOT SHOWN, PAVEMENT SLOPES ARE SHOWN IN THE TYPICAL SECTIONS.

SUPERELEVATION TRANSITION DETAILS			
LANE	ALIGNMENT	STATION	CROSS SLOPE
NORTH LEFT	REF NL_C	590+00.00	1.30%
NORTH LEFT	REF NL_C	590+03.06	1.56%
NORTH RIGHT	REF NR_C	580+00.00	1.73%
NORTH RIGHT	REF NR_C	580+65.13	1.60%
EAST LEFT	REF EL_C	560+00.00	1.58%
EAST LEFT	REF EL_C	560+90.01	1.60%
EAST RIGHT	REF ER_C	550+00.00	1.26%
EAST RIGHT	REF ER_C	550+17.98	1.60%



INTERSECTION DETAILS
 ROUNDABOUT C

DESIGN AGENCY
TRANSYSTEMS
 400 W. NATIONWIDE BLVD., STE 225
 COLUMBUS, OHIO 43215

DESIGNER
 TK

REVIEWER
 GHM 10/27/25

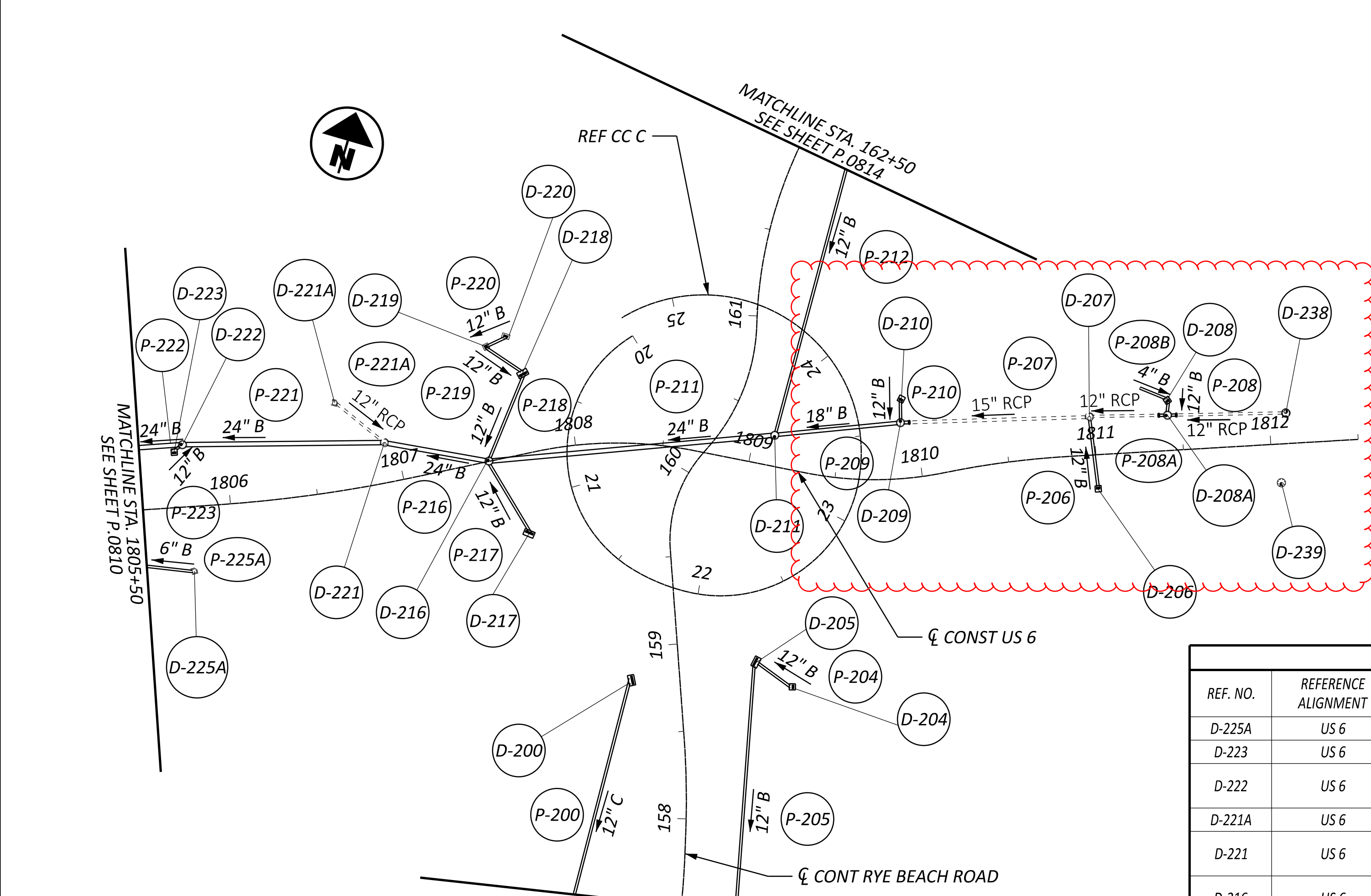
PROJECT ID
 116570

SHEET TOTAL
 P.0741 1106

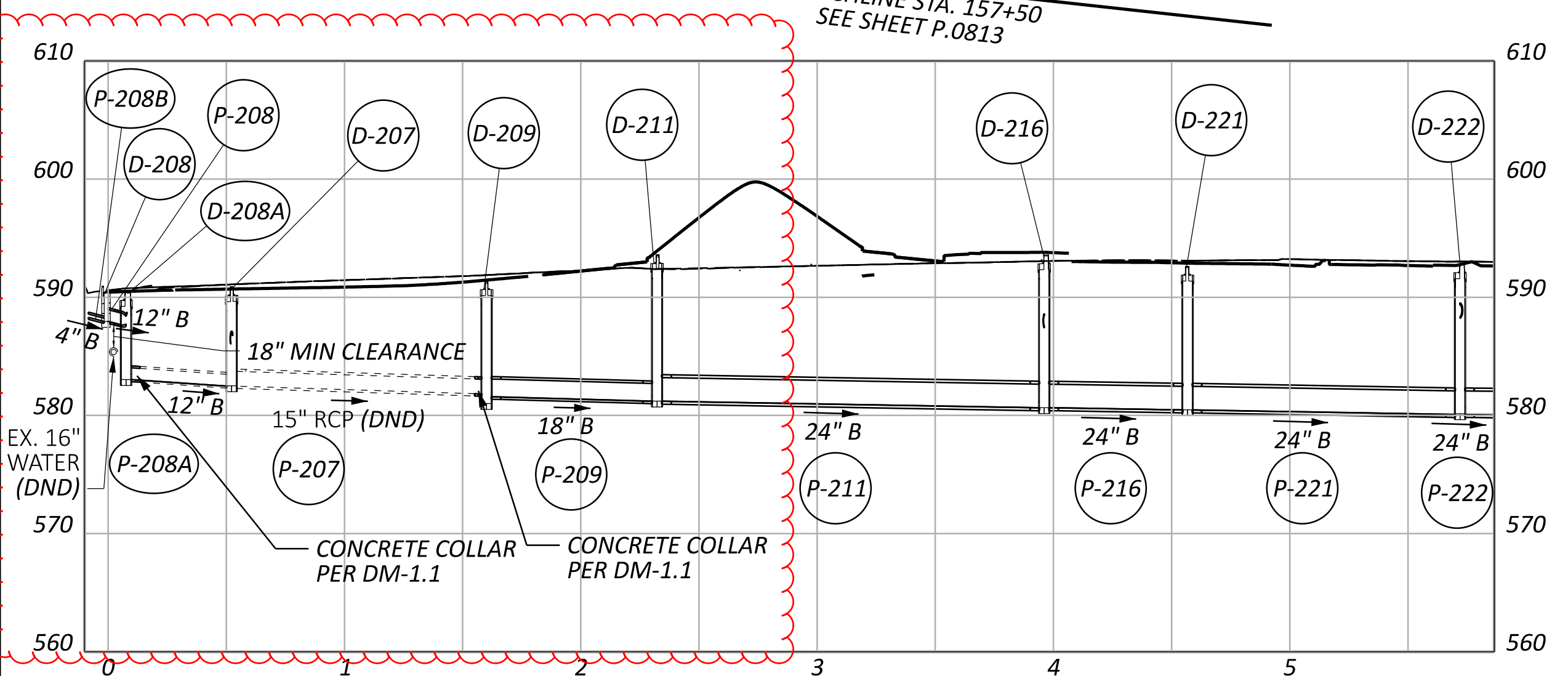
CONST RYE BEACH ROAD STA. 160+14.24 =
 US 6 STA. 808+68.01

MATCH LINE SEE SHEET P.0722

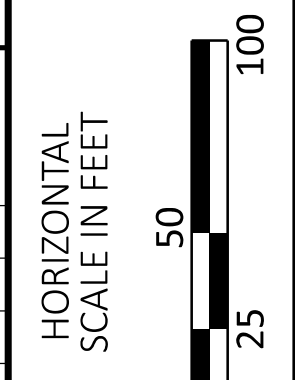
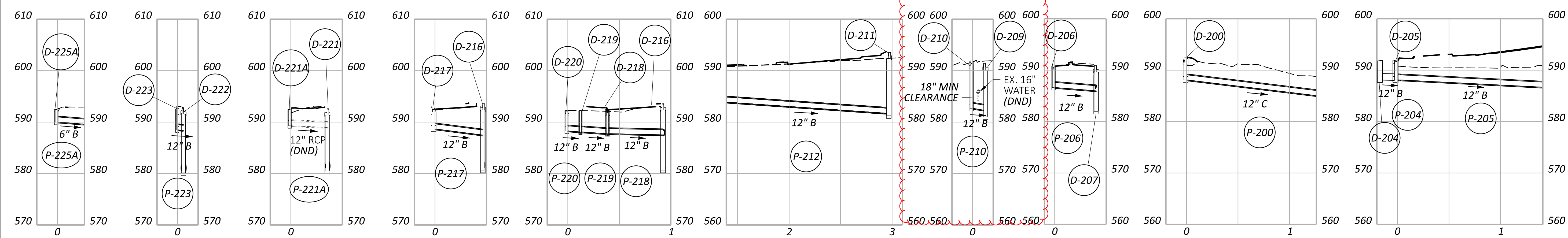
ERI-US 0006-CONNECTIVITY CORRIDOR
 MODEL: CLIP_US006 - Plan 2 [Sheet] PAPER SIZE: 34x22 (in.) DATE: 4/29/2026 TIME: 2:17:21 PM PLTDRW: OHDOT.PDF Levels.plt PENTBL: OHDOT_Pen.tbl USER: hrhorton@gfinc.com WORKSPACE: OHDOTCEV02 WORKSET: 116570 PRODUCT: OpenRoadsDesigner 24.00.02.25
 pw:\ohdot-pw\entley.com\ohdot-pw-02\Documents\01.Active Projects\District 03\Erre\116570\02.Engineering_TransSystems\Drainage\Sheets\116570_DD001.dgn



DRAINAGE CONDUIT DETAILS										
REF. NO.	CFN	LENGTH (FT)	SIZE	TYPE	SLOPE	START STRUCT. REF. NO.	START INVERT ELEV.	STOP STRUCT. REF. NO.	STOP INVERT ELEV.	EXISTING DISPOSITION
P-225A		98	6"	B	2.40%	D-225A	590.80	D-225	588.44	
P-222		100	24"	B	0.31%	D-222	580.08	D-224	579.77	
P-223		6	12"	B	1.25%	D-223	588.48	D-222	588.41	
P-221	1995433	115	24"	B	0.33%	D-221	580.46	D-222	580.08	
P-221A		36	12"	EX. RCP	0.85%	D-221A	589.28	D-221	588.97	DND
P-216	1995438	61	24"	B	0.31%	D-216	580.65	D-221	580.46	
P-218	1995432	54	24"	B	0.50%	D-218	587.74	D-216	587.51	
P-219		26	12"	B	1.33%	D-219	588.08	D-218	587.74	
P-220		13	12"	B	1.50%	D-220	588.27	D-219	588.08	
P-217	1995431	48	12"	B	2.40%	D-217	588.66	D-216	587.51	
P-211	1995435	164	24"	B	0.33%	D-211	581.20	D-216	580.65	
P-209	1995434	72	18"	B	0.53%	D-209	581.58	D-211	581.20	
P-210		15	12"	B	2.40%	D-210	582.67	D-209	582.31	
P-207		5	15"	EX. RCP/B	0.62%	D-207	582.48	D-209	581.81	DND
P-208		8	12"	B	3.63%	D-208	587.95	D-208A	587.66	
P-206		42	12"	B	1.45%	D-206	586.61	D-207	586.00	
P-208B		17	4"	B	1.71%	D-208B	588.57	D-208	588.28	
P-200		172	12"	C	2.41%	D-200	588.09	D-201	583.94	
P-204		25	12"	B	1.00%	D-204	588.36	D-205	588.11	
P-205		198	12"	B	1.00%	D-205	588.11	D-203	586.13	
P-208A		10	12"	B	1.05%	D-208A	583.03	D-208A	583.03	



DRAINAGE STRUCTURE DETAILS									
REF. NO.	REFERENCE ALIGNMENT	STATION	OFFSET	SIDE	TYPE	GRATE/RIM ELEV.	INVERT ELEV.	CONNECTED PIPES	EXISTING DISPOSITION
D-225A	US 6	1805+77	36.80	RT	EX. CB-2-2B	592.45	590.80	(OUT) P-225A NW 6" 590.80	ATG
D-223	US 6	1805+70	32.00	LT	CB-3A	592.47	588.48	(OUT) P-223 NE 12" 588.48	
D-222	US 6	1805+75	35.60	LT	MH-3	592.75	580.08	(IN) P-221 E 24" 580.08, (IN) P-223 SW 12" 588.41, (OUT) P-222 W 24" 580.08, (IN) UD-172 NE 6" 590.38, (IN) UD-60 SE 6" 589.40	
D-221A	US 6	1806+68	50.20	LT	EX. CB-2-2B	592.53	589.28	(OUT) P-221A SE EX. 12" 589.28	ATG
D-221	US 6	1806+92	22.80	LT	EX. MH-3	592.60	580.46	(IN) P-216 SE 24" 580.46, (IN) P-221A NW EX. 12" 588.97, (OUT) P-221 W 24" 580.46	ATG
D-216	US 6	1807+50	0.20	LT	MH-3	593.58	580.65	(IN) P-211 E 24" 580.65, (IN) P-218 NE 12" 587.51, (IN) P-217 S 12" 587.51, (OUT) P-216 NW 24" 580.65	
D-217	US 6	1807+44	35.90	RT	CB-3	592.38	588.66	(OUT) P-217 N 12" 588.66, (IN) UD-63 NE 6" 589.75, (IN) UD-64 W 6" 589.51, (IN) UD-66 E 6" 589.51	
D-218	US 6	1807+67	42.20	LT	CB-3	592.25	587.74	(IN) P-219 NW 12" 587.74, (OUT) P-218 SW 12" 587.74, (IN) UD-61 W 6" 589.53, (IN) UD-62 S 6" 589.49, (IN) UD-67 NE 6" 589.51	
D-219	US 6	1807+61	64.40	LT	CB-2-2B	592.24	588.08	(IN) P-220 NE 12" 588.08, (OUT) P-219 SE 12" 588.08	
D-220	US 6	1807+74	67.90	LT	CB-6	592.28	588.27	(OUT) P-220 SW 12" 588.27	
D-211	US 6	1809+12	17.60	LT	MH-3	593.60	581.20	(IN) P-209 E 18" 581.20, (IN) P-212 NE 12" 581.70, (OUT) P-211 W 24" 581.20, (IN) UD-153 NE 6" 589.10	
D-209	US 6	1809+90	31.93	LT	MH-3	591.46	581.58	(IN) P-207 E 15" 581.81, (IN) P-210 N 12" 582.31, (OUT) P-209 W 18" 581.58	
D-210	US 6	1809+93	45.66	LT	CB-3A	591.39	582.67	(OUT) P-210 S 12" 582.76, (IN) UD-70 W 6" 589.12	
D-207	US 6	1810+98	21.90	LT	EX. MH-3	590.45	582.48	(IN) P-208 E 12" 586.00, (IN) P-206 S 12" 586.00, (IN) EX. 12" E 582.73, (OUT) P-207 W 15" 582.48	ATG
D-206	US 6	1811+00	19.80	RT	CB-3A	590.57	586.61	(OUT) P-206 N 12" 586.61, (IN) UD-69 W 6" 588.01	
D-208	US 6	1811+42	20+18	LT	CB-3A	590.45	587.95	(IN) P-208B N 4" 588.28, (OUT) P-208 S 12" 587.95	
D-200	RYE BEACH	158+81	27.80	LT	CB-3	591.99	588.09	(OUT) P-200 SW 12" 588.09, (IN) UD-111B N 6" 589.32, (IN) UD-107 S 6" 589.43, (IN) UD-108 E 6" 589.43	
D-205	RYE BEACH	158+86	44.30	RT	CB-3	591.77	588.11	(OUT) P-205 SW 12" 588.11, (IN) UD-110B S 6" 588.91, (IN) UD-112 E 6" 589.49	
D-204	RYE BEACH	158+71	63.44	RT	CB-3A	590.75	588.36	(OUT) P-204 W 12" 588.36	
D-208A	US 6	1811+42	18.90	LT	MH-3	590.48	583.03	(IN) P-208 12" 587.66, (IN) P-208A E 583.03, (OUT) P-208A W 583.03, (IN) UD-73 W 6" 588.20	



STORM SEWER PROFILES
 ROUNDABOUT C

FOR UNDERDRAIN DETAILS
SEE SHEET P.0340 - P.0345

DESIGN AGENCY
TRANSYSTEMS
 400 W. NATIONWIDE BLVD., STE 225
 COLUMBUS, OHIO 43215
 DESIGNER
MHT
 REVIEWER
GHM 10/27/25
 PROJECT ID
116570
 SHEET TOTAL
P.0811 1106

ITEM 638 - SPECIAL - 6" GATE VALVE WITH VALVE BOX

WATER LINE VALVES MUST FOLLOW STANDARDS SPECIFIED ON THE ERIE COUNTY SPECIFICATIONS FOR WATER MAINS AND APPURTANCES. SEE WATER DETAIL SHEETS

ITEM 638 - SPECIAL - 8" GATE VALVE WITH VALVE BOX

WATER LINE VALVES MUST FOLLOW STANDARDS SHOWN ON THE ERIE COUNTY SPECIFICATIONS FOR WATER MAINS AND APPURTANCES. SEE WATER DETAIL SHEETS

ITEM 638 - SPECIAL - 6" FIRE HYDRANT

FIRE HYDRANTS MUST FOLLOW STANDARDS SHOWN ON THE ERIE COUNTY SPECIFICATIONS FOR WATER MAINS AND APPURTANCES. SEE WATER DETAIL SHEETS

ITEM 638 - SPECIAL - RETAP, RECONNECT AND EXTEND 1" POLYETHYLENE WATER SERVICE CONNECTION

WATER SERVICE LINES MUST FOLLOW STANDARDS SPECIFIED ON THE ERIE COUNTY SPECIFICATIONS FOR WATER MAINS AND APPURTANCES. SEE WATER DETAIL SHEETS

ITEM 638 - 8" WATER MAIN POLYVINYL CHLORIDE PIPE AND FITTINGS, AWWA C900, DR18, AS PER PLAN A

WATER LINE MUST BE CONCRETE ENCASED. FOLLOW STANDARDS SHOWN ON THE ERIE COUNTY SPECIFICATIONS. SEE WATER DETAIL SHEETS. ROCK EXCAVATION MAY BE NECESSARY TO INSTALL THIS ITEM. UNIT PRICE ADJUSTED TO INCLUDE PIPE, ENCASEMENT, AND ROCK EXCAVATION PER FOOT.

ITEM 638 - 8" WATER MAIN POLYVINYL CHLORIDE PIPE AND FITTINGS, AWWA C900, DR18, AS PER PLAN B

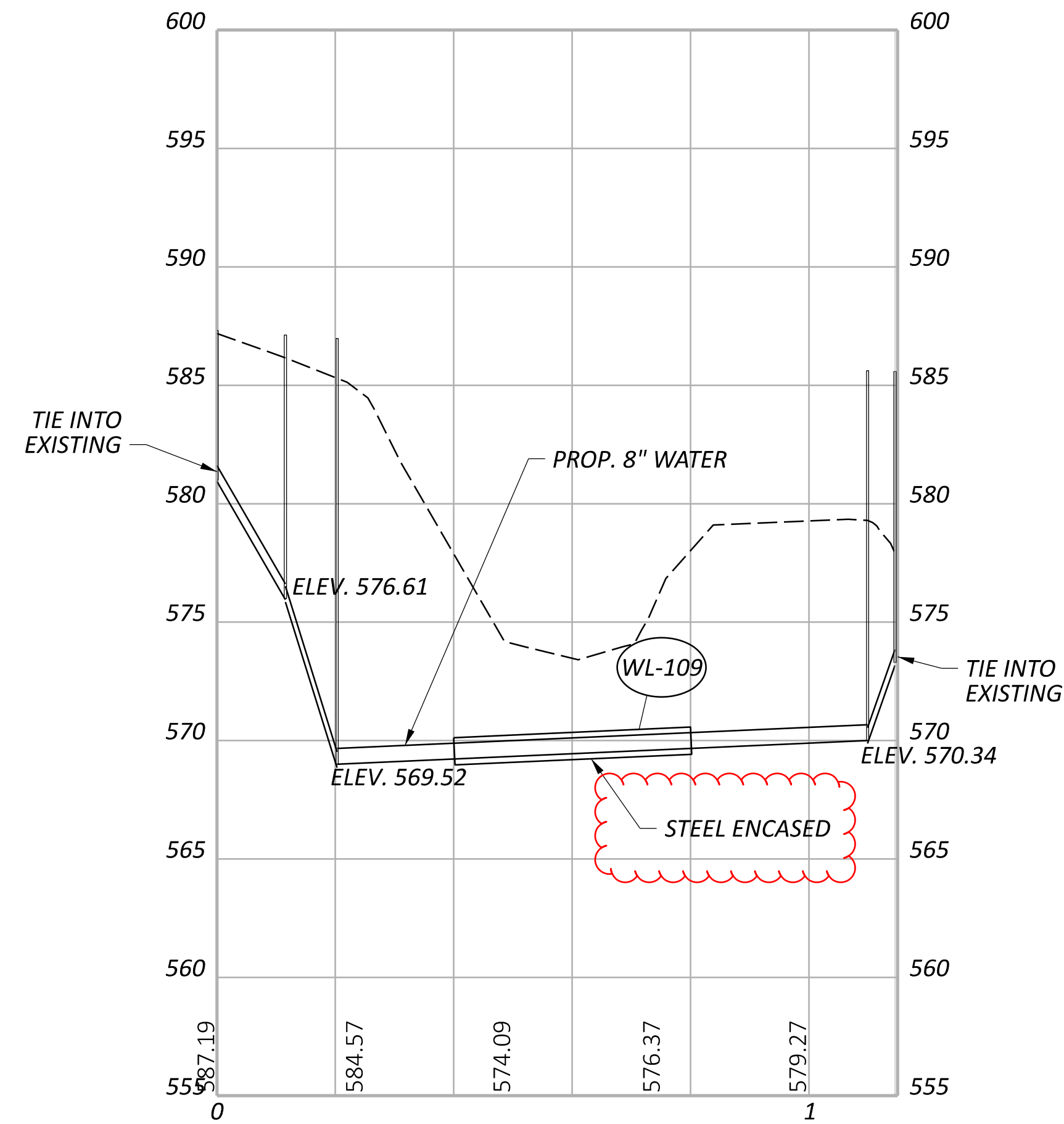
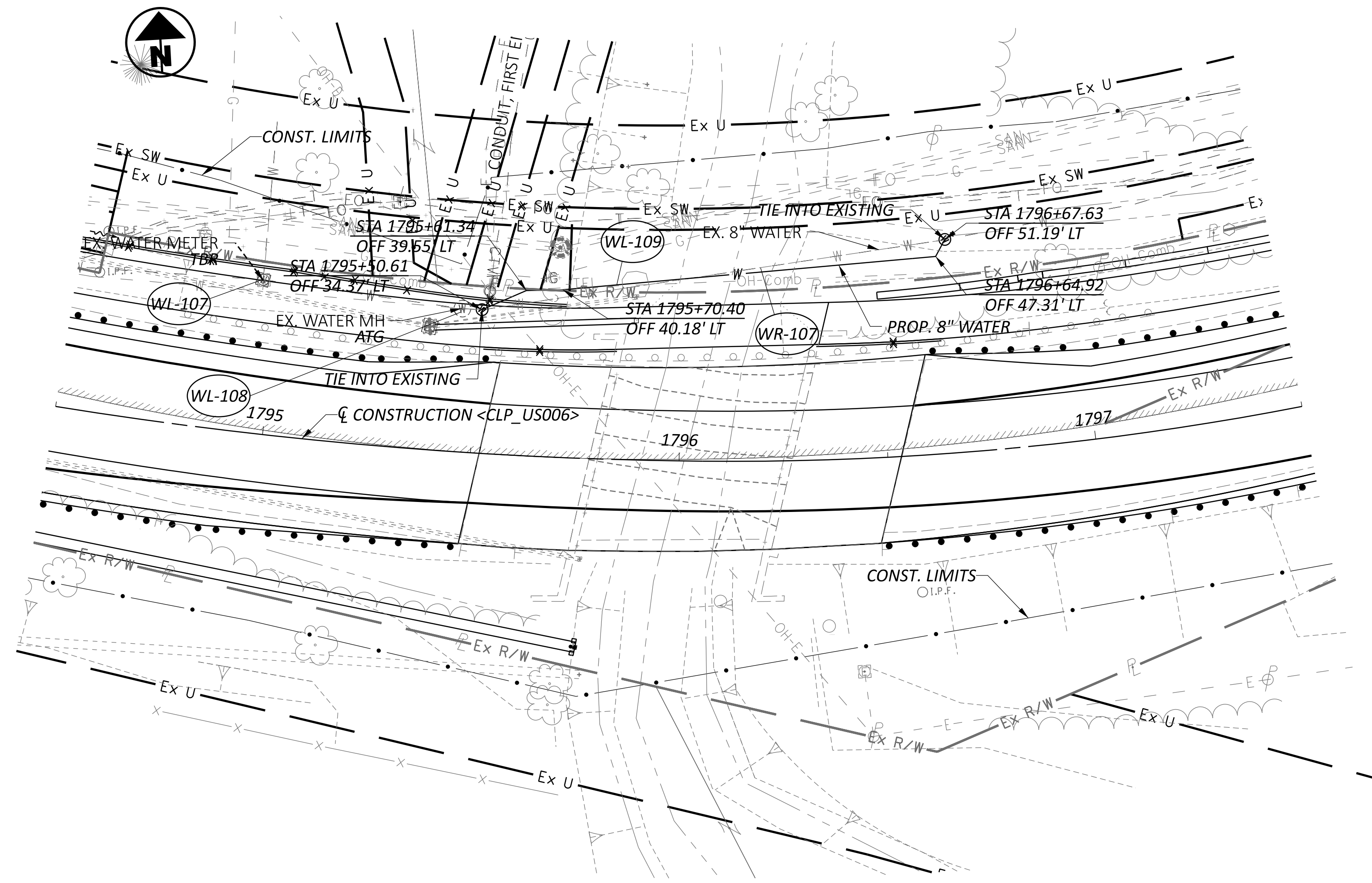
WATER LINE SHALL BE STEEL ENCASED IN ACCORDANCE WITH ERIE COUNTY STANDARDS. REFER TO ERIE COUNTY SPECIFICATIONS AND WATER DETAIL SHEETS FOR REQUIREMENTS. THE CROSSING OF SAWMILL CREEK SHALL NOT BE OPEN CUT AND MUST BE INSTALLED BY JACK AND BORE METHODS. ROCK EXCAVATION MAY BE REQUIRED FOR INSTALLATION. UNIT PRICE SHALL INCLUDE PIPE, STEEL ENCASEMENT, JACK AND BORE OPERATIONS, AND ROCK EXCAVATION, MEASURED PER LINEAR FOOT.

ITEM 638 - WATER WORK, MISC.: 16" WATER MAIN CONCRETE ENCASEMENT IN PLACE, SEE ERIE COUNTY STANDARDS.

EXISTING WATER LINE MUST BE CONCRETE ENCASED. FOLLOW STANDARDS SHOWN ON THE ERIE COUNTY SPECIFICATIONS. SEE WATER DETAIL SHEETS. ROCK EXCAVATION MAY BE NECESSARY TO INSTALL THIS ITEM. UNIT PRICE ADJUSTED TO INCLUDE ENCASEMENT AND ROCK EXCAVATION PER FOOT. WATER TO REMAIN ON.

ITEM 638 - WATER WORK, MISC.: AWWA STANDARD TESTING

TESTING FOR ALL NEW WATER LINES AND APPURTANCES MUST BE TO THE STANDARD SPECIFIED BY THE AMERICAN WATER WORKS ASSOCIATION. SEE WATER WORK DETAILS FOR ERIE COUNTY STANDARDS. UNIT PRICE FOR TESTING IS LUMP SUM.



NOTE:

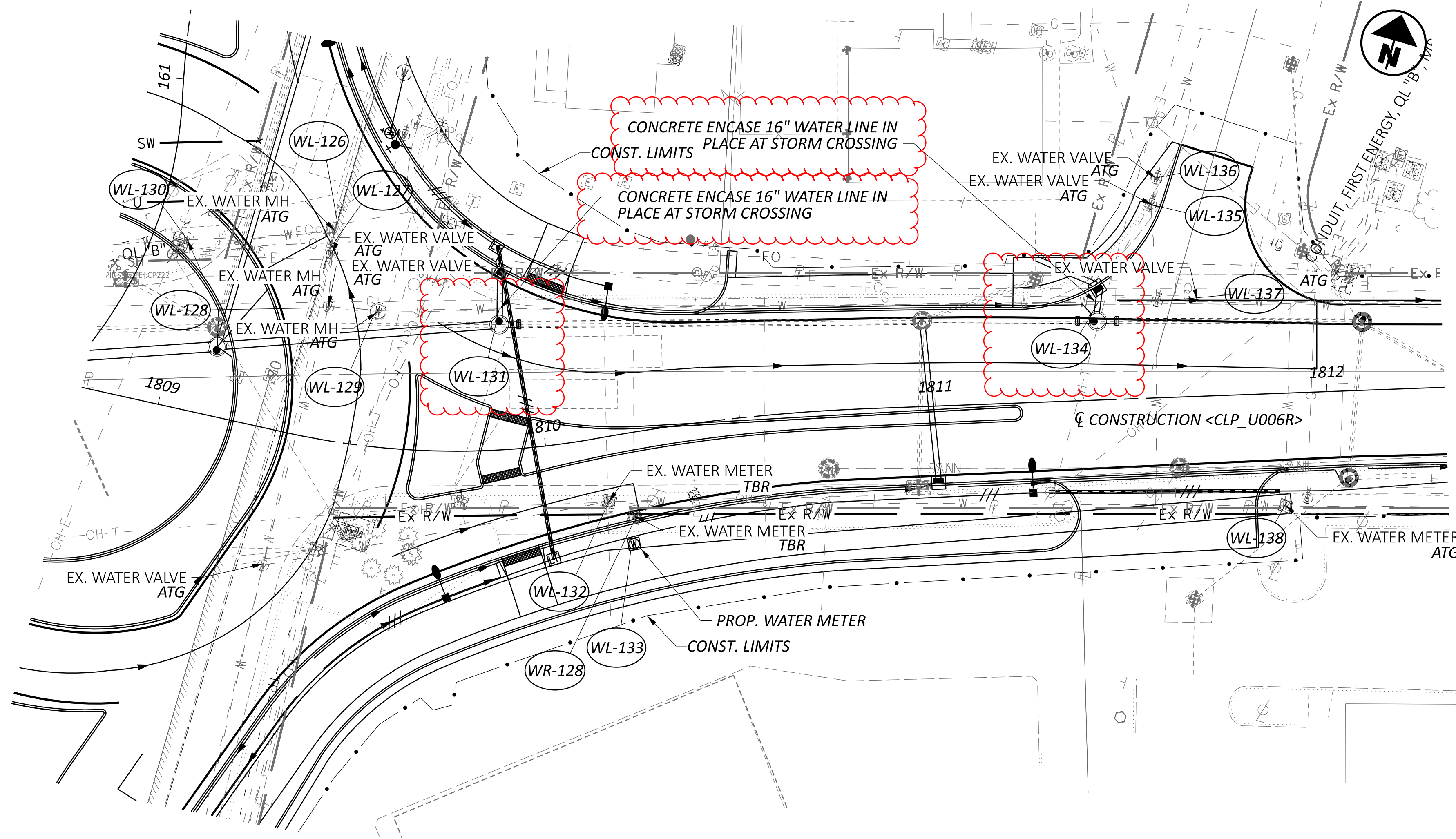
1. ALL PROPOSED WATER FACILITIES AND LINES MUST FOLLOW STANDARD AWWA TESTING.
2. IN AREAS WHERE WATER IS TO BE SHUT OFF FOR WORK PERFORMED, WATER WILL NOT BE SHUT OFF FOR MORE THAN 12 CONSECUTIVE HOURS.
3. IN AREAS WHERE LIVE TAPPING IS SPECIFIED, WATER WILL NOT BE SHUT OFF.
4. RETURN ALL REMOVED HYDRANTS AND VALVES TO THE OWNER.



WATER WORK - PLAN & PROFILE
 US 6 (CLEVELAND RD W)

DESIGN AGENCY
TRANSYSTEMS
 400 W. NATIONWIDE BLVD., STE 225
 COLUMBUS, OHIO 43215

DESIGNER
 TK
 REVIEWER
 GHM 10/27/25
 PROJECT ID
 116570
 SHEET TOTAL
 P.0864 1106



NOTE:

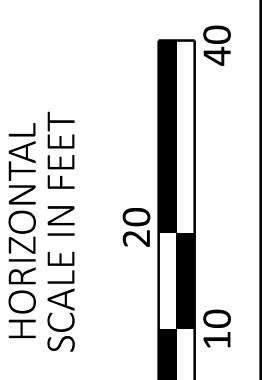
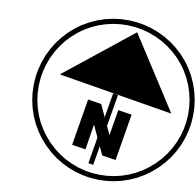
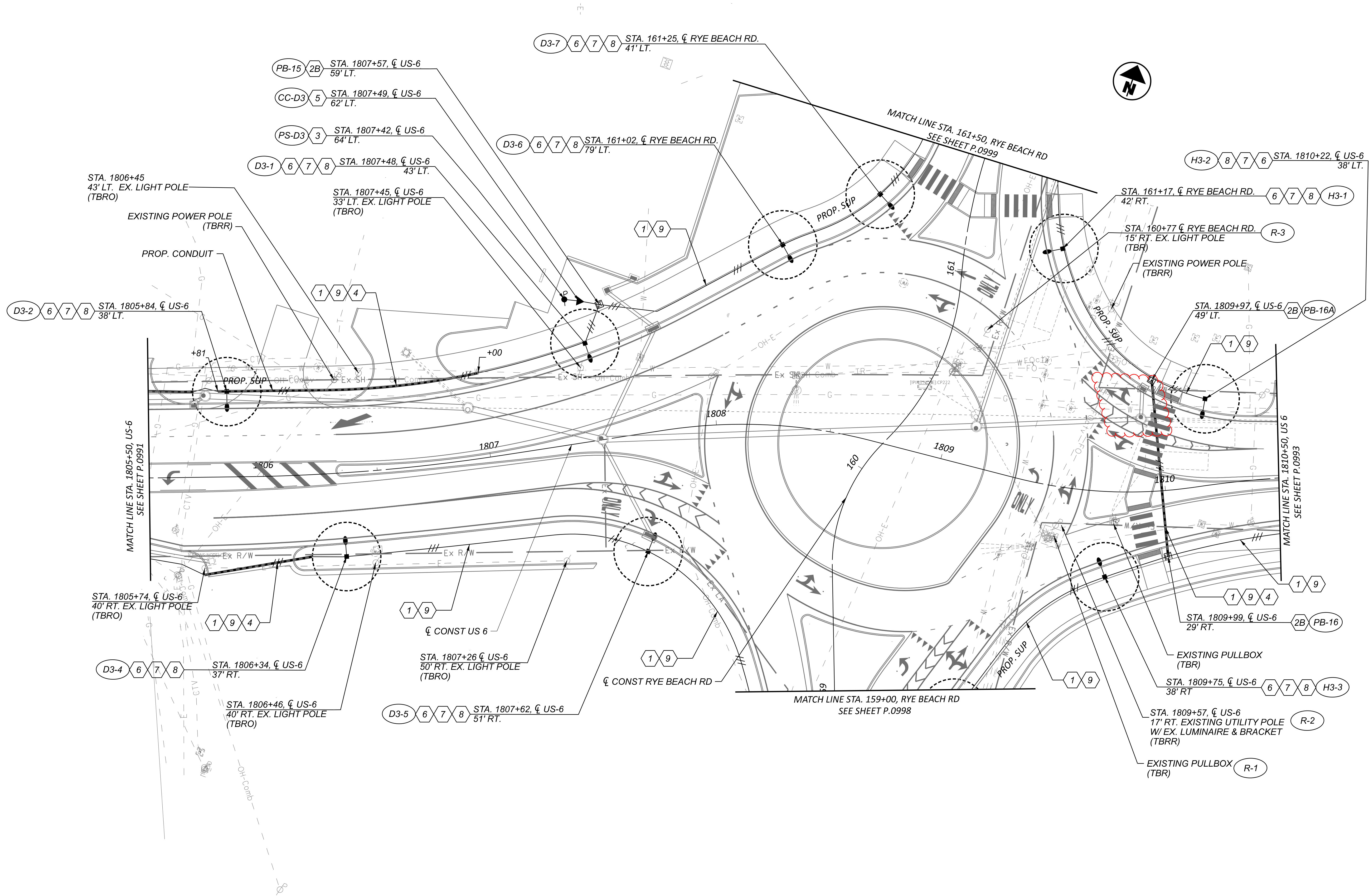
1. ALL PROPOSED WATER WATER FACILITIES AND LINES MUST FOLLOW STANDARD AWWA TESTING.
2. IN AREAS WHERE WATER IS TO BE SHUT OFF FOR WORK PERFORMED, WATER WILL NOT BE SHUT OFF FOR MORE THAN 12 CONSECUTIVE HOURS.
3. IN AREAS WHERE LIVE TAPPING IS SPECIFIED, WATER WILL NOT BE SHUT OFF.
4. RETURN ALL REMOVED HYDRANTS AND VALVES TO THE OWNER.



WATER WORK - PLAN & PROFILE
 US 6 (CLEVELAND RD W)

DESIGN AGENCY
TRANSYSTEMS
 400 W. NATIONWIDE BLVD., STE 225
 COLUMBUS, OHIO 43216

DESIGNER
 TK
 REVIEWER
 GHM 10/27/25
 PROJECT ID
 116570
 SHEET TOTAL
 P.0866 1106



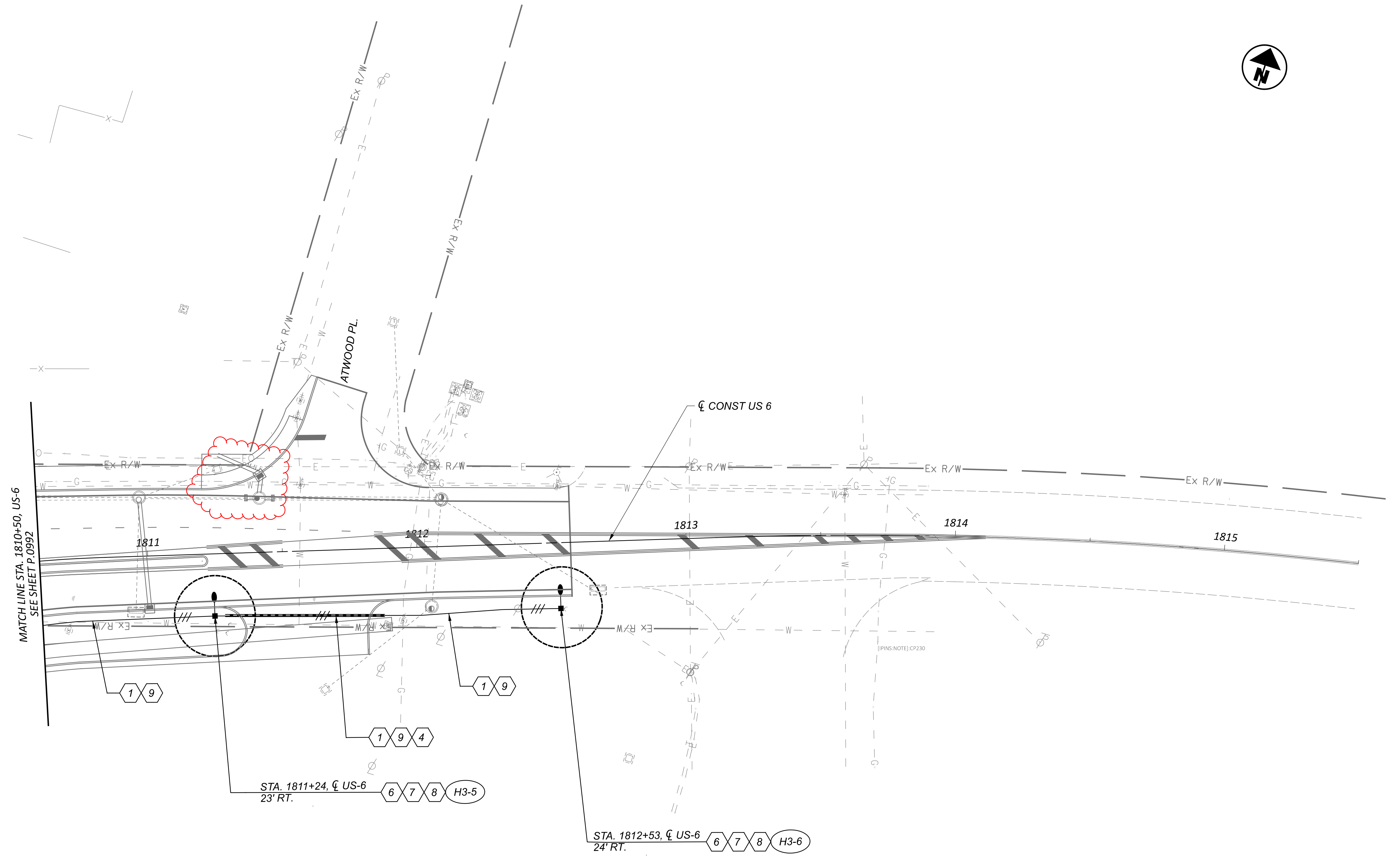
LIGHTING PLAN - US 6 (CLEVELAND RD W)
 STA. 1805+50.00 TO STA. 1810+50.00

NOTE:
 FOR LEGEND, SEE SHEET P.0981

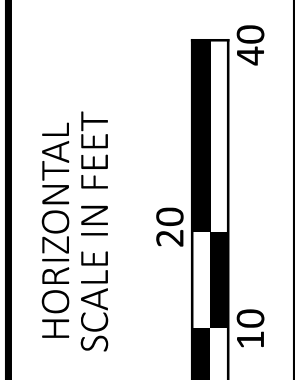
DESIGN AGENCY	
TRANSYSTEMS 400 W. NATIONWIDE BLVD., STE 225 COLUMBUS, OHIO 43216	
DESIGNER	
SSA	
REVIEWER	
SS 10/27/25	
PROJECT ID	
116570	
SHEET	TOTAL
P.0992	1106

ERI-US 0006-CONNECTIVITY CORRIDOR

MODEL: CLP_US006 - Plan 14 [Sheet] PAPER SIZE: 34x42 (in.) DATE: 4/29/2026 TIME: 11:07:56 AM PUTDRV: OHDOT_PDF.plt PENTBL: OHDOT_Pen.tbl USER: ssaduse@gfinc.com WORKSPACE: OHDOTCEV02 WORKSET: 116570 PRODUCT: OpenRoadsDesigner 24.00.02.25
 pw:\ohdot-pw.bentley.com\ohdot-pw-02\Documents\01.Active Projects\District 03\Erie\116570\402-Engineering_Lighting\Sheets\116570_LP001.dgn



NOTE:
 FOR LEGEND, SEE SHEET P.0981



LIGHTING PLAN - US 6 (CLEVELAND RD W)
STA. 1810+50.00 TO STA. 1815+50.00

DESIGN AGENCY	
TRANSYSTEMS 400 W. NATIONWIDE BLVD., STE. 225 COLUMBUS, OHIO 43216	
DESIGNER	
SSA	
REVIEWER	
SS	10/27/25
PROJECT ID	
116570	
SHEET	TOTAL
P.0993	1106

STANDARD DRAWINGS AND SUPPLEMENTAL SPECIFICATIONS

REFER TO THE FOLLOWING STANDARD DRAWING(S):

DBR-2-73	DATED	07/19/2002
DBR-3-11	DATED	07/15/2011
PCB-91	DATED	07/17/2020
RM-4.2	DATED	04/17/2020
RM-4.5	DATED	07/21/2017
VPF-1-90	DATED	07/21/2023

AND FOLLOWING SUPPLEMENTAL SPECIFICATION(S):

800	DATED	01/19/2024
846	DATED	04/17/2015

DESIGN SPECIFICATIONS

THIS STRUCTURE CONFORMS TO THE 9TH EDITION OF THE "LRFD BRIDGE DESIGN SPECIFICATIONS" ADOPTED BY THE AMERICAN ASSOCIATION OF STATE HIGHWAY AND TRANSPORTATION OFFICIALS, 2020, AND THE ODOT BRIDGE DESIGN MANUAL, 2020.

DESIGN DATA

CONCRETE CLASS QC1 - COMPRESSIVE STRENGTH 4.0 KSI (BARRIER)

CONCRETE REINFORCEMENT:
EPOXY COATED STEEL REINFORCEMENT - MINIMUM YIELD STRENGTH 60 KSI (DECK, SUBSTRUCTURE)

GFRP - CMS 705.28 (MODULUS) 8700 KSI

EXISTING STRUCTURE VERIFICATION

DETAILS AND DIMENSIONS SHOWN ON THESE PLANS PERTAINING TO THE EXISTING STRUCTURE HAVE BEEN OBTAINED FROM PLANS OF THE EXISTING STRUCTURE AND FROM FIELD OBSERVATIONS AND MEASUREMENTS. CONSEQUENTLY, THEY ARE INDICATIVE OF THE EXISTING STRUCTURE AND THE PROPOSED WORK, BUT THEY SHALL BE CONSIDERED TENTATIVE AND APPROXIMATE. THE CONTRACTOR IS REFERRED TO CMS SECTIONS 102.05, 105.02, AND 513.04.

BASE CONTRACT BID PRICES UPON A RECOGNITION OF THE UNCERTAINTIES DESCRIBED ABOVE AND UPON A PREBID EXAMINATION OF THE EXISTING STRUCTURE. HOWEVER, THE DEPARTMENT WILL PAY FOR ALL PROJECT WORK BASED UPON ACTUAL DETAILS AND DIMENSIONS THAT HAVE BEEN VERIFIED IN THE FIELD.

MAINTENANCE OF TRAFFIC

FOR MAINTENANCE OF TRAFFIC DETAILS, SEE MOT PLANS.

ITEM 202 - WEARING COURSE REMOVED, AS

PER PLAN

REMOVAL DURING PHASE 2 MOT - REMOVE (PER ITEM 254) THE FULL DEPTH OF ASPHALT CONCRETE AND EXISTING WATERPROOFING (IF ANY) AT THE LOCATION SHOWN ON THE PLANS. REMOVE THE ASPHALT CONCRETE TO THE TOP OF THE CONCRETE BOX BEAM. THE RESULTING SURFACE CONDITION SHOULD BE ROUGH GROUND CONCRETE. TOTAL REMOVAL AREA: 75 SY.

REMOVE THE EXISTING DRIP STRIP, INCLUDE WITH ITEM 202 - WEARING COURSE REMOVED, AS PER PLAN, FOR PAYMENT.

REMOVAL DURING PHASE 3 MOT - REMOVE 2" OF EXISTING PAVEMENT AS SHOWN ON THE PLANS (SHEET 6 OF 9).

ITEM 407 - TACK COAT

SEE SHEET 3 OF 9 FOR TACK COAT APPLICATION RATES.

ITEM 517 - DEEP BEAM RETROFIT RAILING,

AS PER PLAN

IN ADDITION TO PLACING DEEP BEAM RETROFIT RAILING PER STANDARD DRAWING DBR-3-11, ADD TWO BOLTS THROUGH THE TOP AND BOTTOM TUBING AS SHOWN ON SHEET 7/9.

ITEM 607 - VANDAL PROTECTION FENCE, 6"

STRAIGHT, COATED FABRIC, AS PER PLAN

FABRICATE AND INSTALL VANDAL PROTECTION FENCE PER STANDARD DRAWING VPF-1-90 AND AS MODIFIED ON SHEET 7/9.

INSTALL FENCING FOR EACH CONSTRUCTION PHASE PRIOR TO OPENING THAT PHASE TO VEHICULAR AND / OR PEDESTRIAN TRAFFIC.

ITEM 622 - BARRIER, MISC.: MODIFIED CONCRETE BARRIER, SINGLE SLOPE, TYPE D

SLIP FORMING OF THE BARRIER IS NOT PERMITTED.

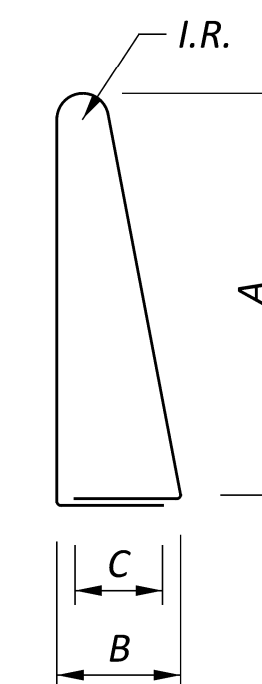
ITEM 846 - POLYMER MODIFIED ASPHALT EXPANSION JOINT SYSTEM, AS PER PLAN

THE POLYMER MODIFIED ASPHALT JOINT SYSTEM WILL VARY IN DEPTH (2" TO 4½") ACROSS THE PHASE 3 MOT INSTRUCTIONS (SHEET 6 OF 9)

ESTIMATED QUANTITIES							
ITEM	ITEM EXT.	PART	TOTAL	UNIT	DESCRIPTION	SEE SHEET NO.	
202	23501	04	478	SY	WEARING COURSE REMOVED, AS PER PLAN	2, 5, 6	
407	10000	04	540	GAL	TACK COAT	3, 5, 6	
442	10000	04	14	CY	ASPHALT CONCRETE SURFACE COURSE, 12.5 MM, TYPE A (446)	3, 6	
442	10081	04	18	CY	ASPHALT CONCRETE INTERMEDIATE COURSE, 12.5 MM, TYPE A (446), AS PER PLAN	3, 6	
442	22001	04	5	CY	ASPHALT CONCRETE SURFACE COURSE, 9.5 MM, TYPE A (449), AS PER PLAN	3, 5	
442	22401	04	9	CY	ASPHALT CONCRETE INTERMEDIATE COURSE, 19 MM, TYPE A (449), AS PER PLAN	3, 5	
509	10000	04	400	LBS	EPOXY COATED STEEL REINFORCEMENT	8, 9	
509	30020	04	1218	FT	NO. 4 DEFORMED GFRP REINFORCEMENT	8, 9	
510	10001	04	32	EACH	DOWEL HOLES WITH NONSHRINK, NONMETALLIC GROUT	8	
512	10100	04	84	SY	SEALING OF CONCRETE SURFACES (EPOXY-URETHANE)	3, 5	
512	33011	04	135	SY	TYPE 3 WATERPROOFING, AS PER PLAN	3, 5	
516	13600	04	19	FT	1" PREFORMED EXPANSION JOINT FILLER	8, 9	
516	31000	04	62	FT	JOINT SEALER	3, 6	
517	75600	06	68	LF	DEEP BEAM BRIDGE RETROFIT RAILING	1, 3, 4	
517	75601	06	68	LF	DEEP BEAM BRIDGE RETROFIT RAILING, AS PER PLAN	1, 2, 5, 6, 7	
518	22300	04	62	FT	SPECIAL: STEEL DRIP STRIP	3, 5	
607	39901	04	57	FT	VANDAL PROTECTION FENCE, 6' STRAIGHT, COATED FABRIC, AS PER PLAN	1, 2, 3, 5, 7	
622	90000	04	94	FT	BARRIER, MISC.: MODIFIED CONCRETE BARRIER, SINGLE SLOPE, TYPE D	1, 2, 3, 5, 8, 9	
846	00111	04	43	CF	POLYMER MODIFIED ASPHALT EXPANSION JOINT SYSTEM, AS PER PLAN	2, 7	

GFRP LIST															
MARK	MAT'RL TYPE	NUMBER			LENGTH	TOTAL LENGTH	WEIGHT	TYPE	DIMENSIONS						
		REAR	FWD	TOTAL					A	B	C	D	E	F	INC.
X401	GRFP			18	15'-9"	284		STR							
X402	GRFP			8	16'-1"	129		STR							
X403	GRFP			9	30'-0"	270		STR							
X404	GRFP			9	31'-11"	287		STR							
X405	GRFP			8	10'-8"	85		STR							
X406	GRFP			16	10'-2"	160		STR							
TOTAL:						1215									

ECSR LIST															
MARK	MAT'RL TYPE	NUMBER			LENGTH	TOTAL LENGTH	WEIGHT	TYPE	DIMENSIONS						
		REAR	FWD	TOTAL					A	B	C	D	E	F	I.R.
Y401	ECSR			78	7'-8"	598'-3"	400	Y401	3'-3"	1'-0"	0'-4"				3"
TOTAL:						400									



TYPE 1

GENERAL NOTES, ESTIMATED QUANTITIES, AND REINFORCEMENT LIST
 BRIDGE NO. ERI-00006-12.481
 US 6 OVER PLUM BROOK

SFN	2201674
DESIGN AGENCY	NEAS Neasc Engineering & Architectural Services, Inc.
DESIGNER	CHECKER
AS	JC
REVIEWER	JS 10/27/25
PROJECT ID	116570
SUBSET	TOTAL
2	9
SHEET	TOTAL
P.1017	1106