

NOTES

GENERAL: For details of 81" Single Slope Barriers, see SCD RM-4.8.

WALLS: The walls between the bottom slab and the upper permissible construction joint may be built of brick, concrete, concrete block, or cast-in-place concrete, 8" nominal thickness for depths of 12' or less. Precast walls have a minimum thickness of 6" and are reinforced sufficiently to permit shipping and handling without damage. The unit above the permissible construction joint may be precast or cast-in-place.

CONCRETE: Provide Class QC1 concrete for cast-in-place structures. When precast, provide concrete meeting the requirements of CMS 706.13. Mark the inlet number on the structure. Seal the exposed concrete surfaces of the barrier per Item 512 when specified in the plans.

REINFORCEMENT: Provide epoxy coated steel reinforcement in accordance with CMS 509.10.

FOOTING JOINTS: Provide a sealed joint with the vertical walls between the barrier footing and a concrete pavement or concrete base as detailed on SCD RM-4.3.

CASTINGS: The minimum weight of frame and cover is 540 lbs. See Sheet 2 for casting details.

Lighter weight frames and grates that meet the requirements of CMS 711.14 may also be provided. Grate openings and dimensions may not differ from those shown unless otherwise shown in the plans.

STEPS: Provide steps according to SCD MH-1.

INLETS OVER 12 FEET IN DEPTH: Provide precast or cast-in-place concrete for inlets over 12 feet in depth. Reinforce with #4 bars on 12" centers both vertically and horizontally with 2" clearance from the inside wall face.

OPENINGS: Ensure pipe openings are the outside diameter of the pipe being supplied plus 2" when fabricated or field cut. Fill any voids per CMS 611.

PCJ: Permissible construction joint

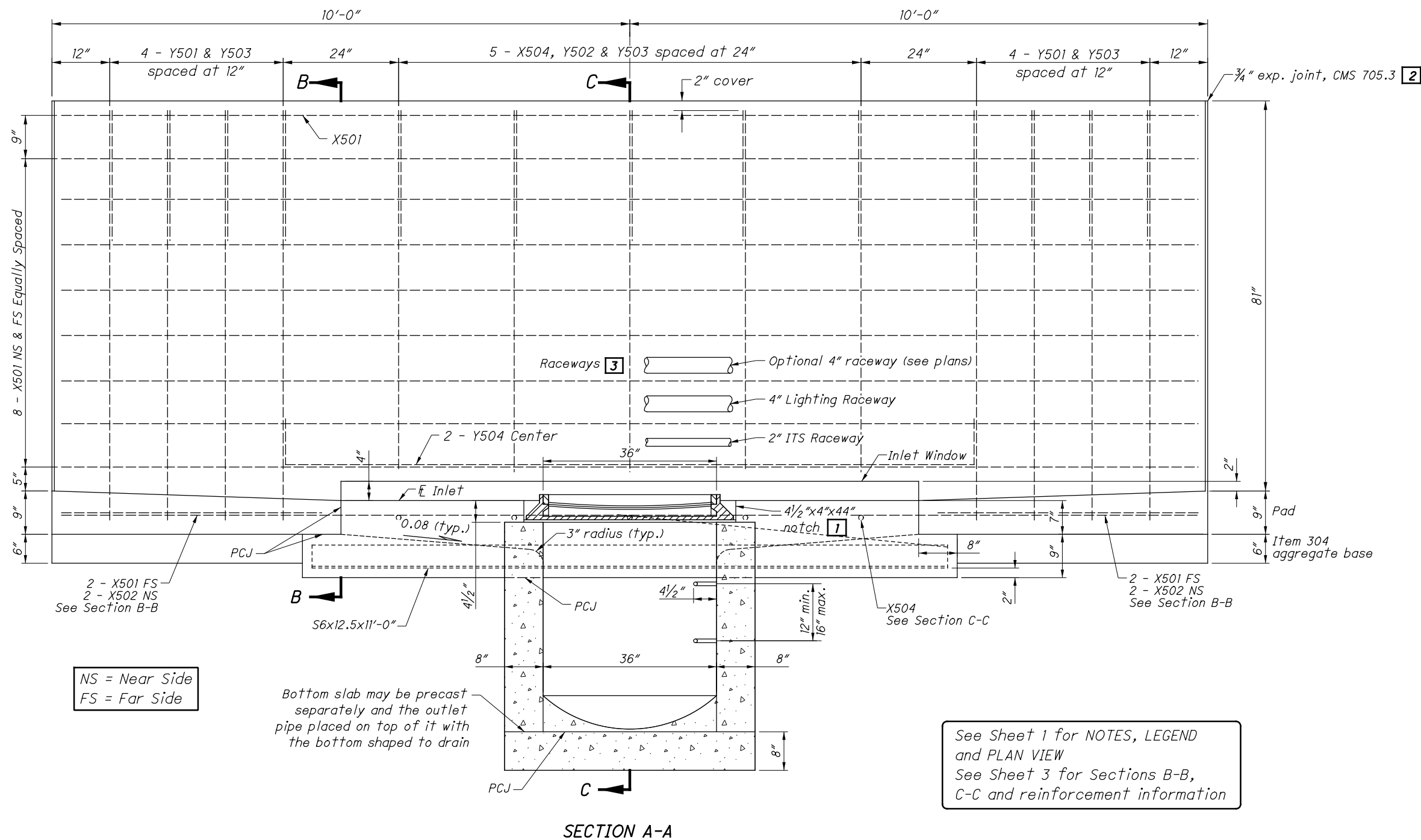
PAYMENT: Payment will be made at the unit price bid per Each for Item 611 - Inlet No. 3 For Single Slope Barrier Type N Barrier and includes all materials, reinforcement, castings, raceways, wiring, labor and incidentals required to construct the inlet as shown. Sealing of exposed concrete and sealing of the barrier will be paid for under Item 512 when specified in the plans.

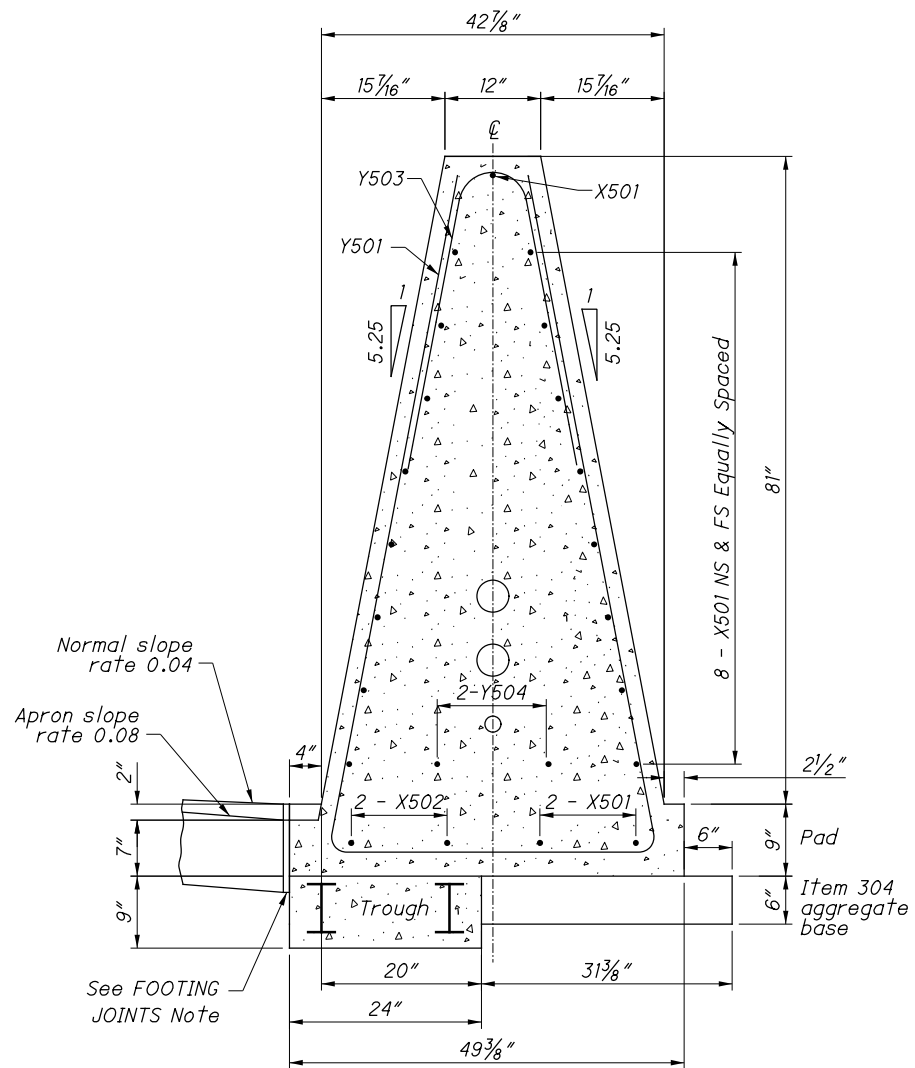
LEGEND

- 1** After casting is placed, fill notch with 4000 psi compressive strength concrete.
- 2** Provide a 1/2" minimum exp. joint in concrete pavement or concrete shoulders.
- 3** See Sheet 3 for RACEWAY PLACEMENT over inlet window details.

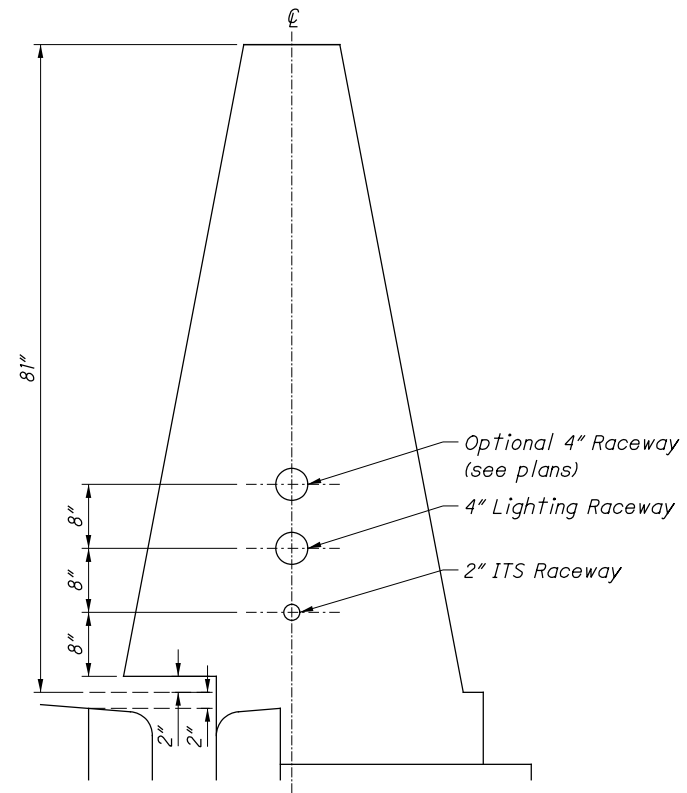
See Sheet 2 for Section A-A.
See Sheet 3 for Sections B-B,
C-C and reinforcement information.



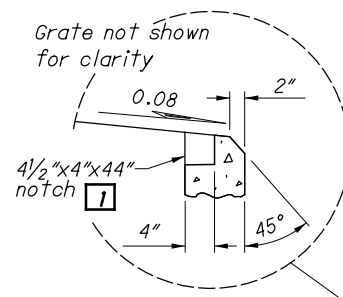




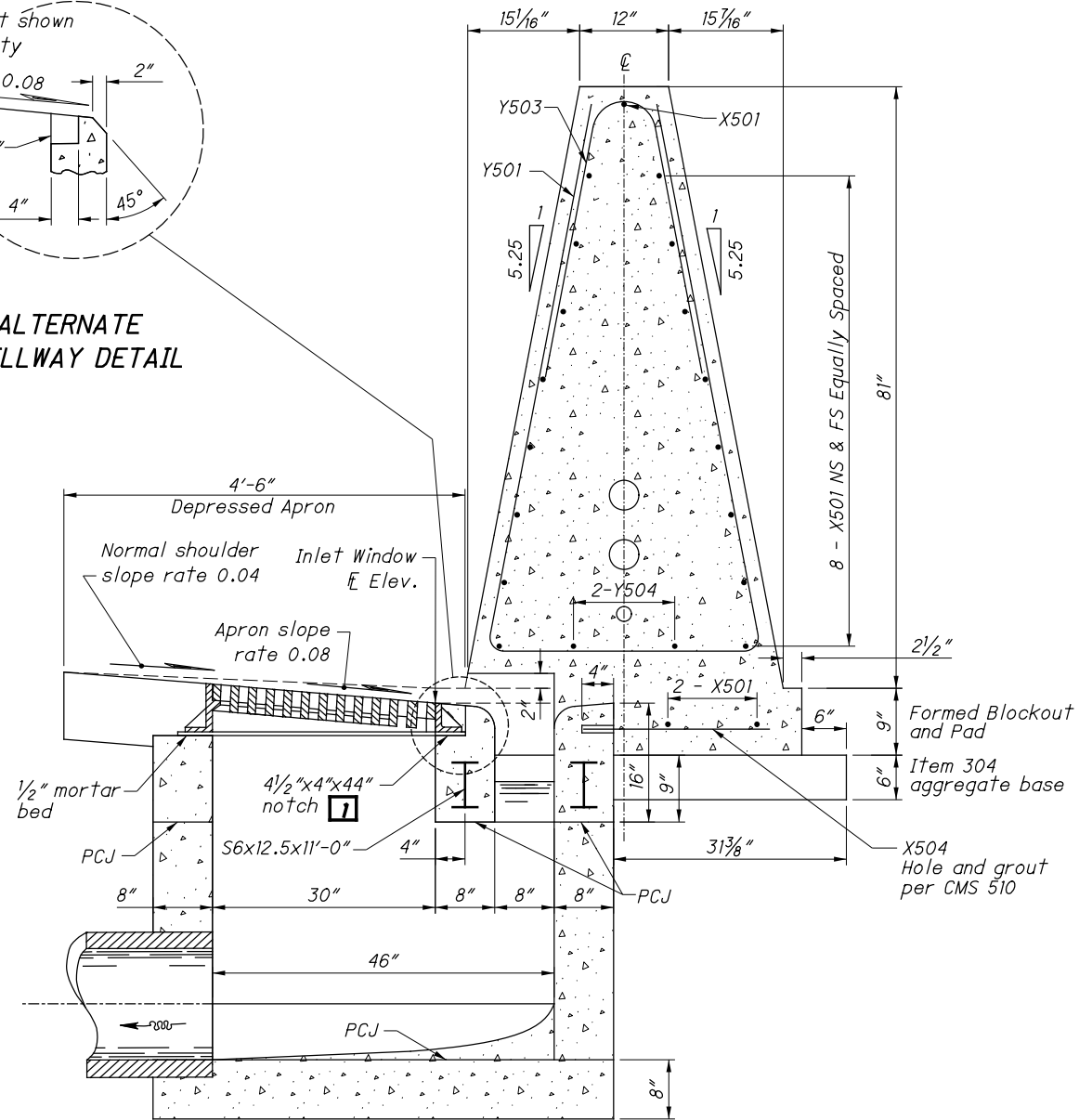
SECTION B-B



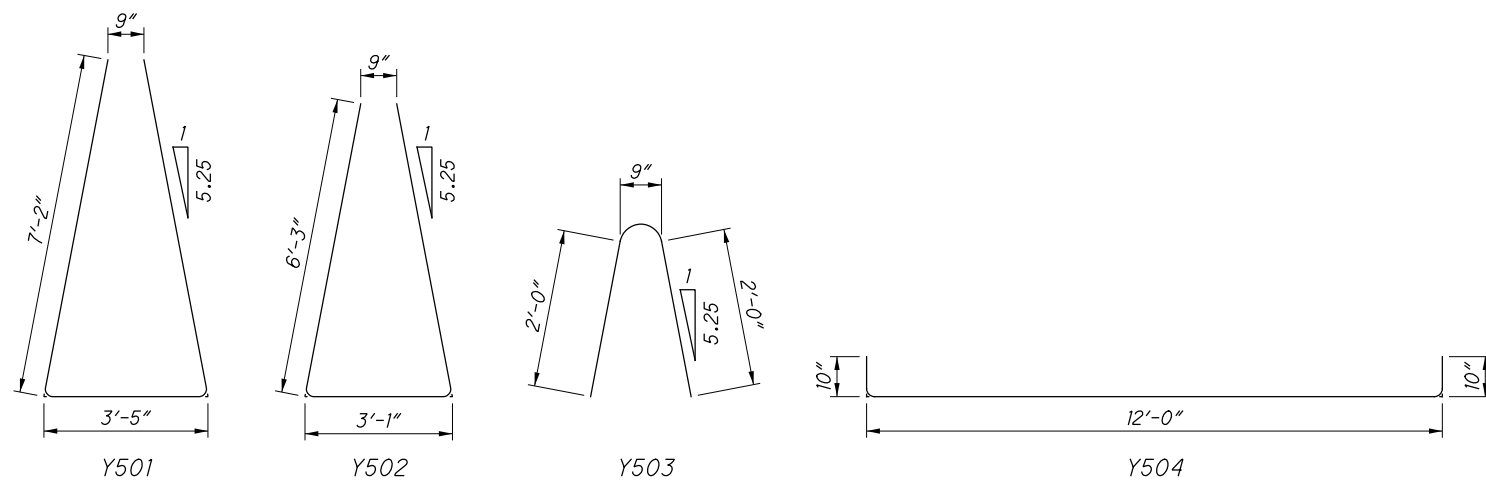
RACEWAY PLACEMENT
Over Inlet Window



ALTERNATE
SPILLWAY DETAIL

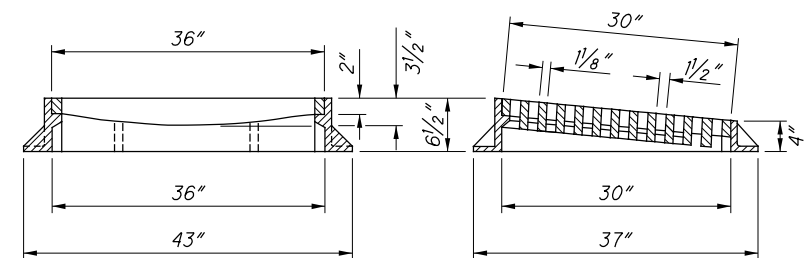


SECTION C-C



BENDING DIAGRAMS

REINFORCEMENT LIST (For Estimating Purposes Only)											
X501 #5 Bar		X502 #5 Bar		X503 #5 Bar		X504 #5 Bar		Y501 #5 Bar		Y502 #5 Bar	
Straight		Straight		Straight		Straight		Bent		Bent	
No.	Length	No.	Length	No.	Length	No.	Length	No.	Length	No.	Length
19	19'-8"	4	4'-8"	8	3'-5"	5	2'-2"	8	17'-6"	5	19'-8"



CASTING DETAILS

See Sheet 1 For NOTES,
LEGEND and PLAN VIEW

