

# STATE OF OHIO DEPARTMENT OF HIGHWAYS ATB-1- (19.20-22.12) ASHTABULA COUNTY KINGSVILLE TOWNSHIP AND VILLAGE OF LAKEVILLE

ACI-1103 (I7)

FED. RD. DIVISION	STATE	PROJECT	
2	OHIO	ACI-1103 (I7)	

1  
379

LIMITED ACCESS

ATB-1- (19.20-22.12)

THIS IMPROVEMENT HAS BEEN DECLARED A LIMITED ACCESS HIGHWAY OR FREEWAY BY ACTION OF THE DIRECTOR OF HIGHWAYS IN ACCORDANCE WITH THE PROVISIONS OF SECTION 5511.02, REVISED CODE OF OHIO, AND IS ESPECIALLY DESIGNED FOR THROUGH TRAFFIC.

NOTE: FEDERAL PROJECT NUMBER I-1103(I7) APPEARING THROUGHOUT THESE PLANS SHALL BE CONSIDERED TO READ ACI-1103 (I7)

528

THE STANDARD SPECIFICATIONS OF THE STATE OF OHIO DEPARTMENT OF HIGHWAYS, INCLUDING CHANGES AND SUPPLEMENTAL SPECIFICATIONS LISTED IN THE PROPOSAL SHALL GOVERN THIS IMPROVEMENT.

THE RIGHT-OF-WAY NECESSARY FOR THIS IMPROVEMENT WILL BE PROVIDED BY THE STATE OF OHIO.

I HEREBY APPROVE THESE PLANS AND DECLARE THAT THE MAKING OF THIS IMPROVEMENT WILL NOT REQUIRE THE CLOSING OF THE HIGHWAY TO TRAFFIC AND THAT PROVISIONS FOR THE MAINTENANCE AND SAFETY OF TRAFFIC WILL BE AS SET FORTH ON THE PLANS AND ESTIMATES.

APPROVED: R. J. Schuman  
DATE 2-3-58 CHIEF ENGINEER, INTERSTATE PROJECTS

APPROVED: C. H. Mahewes  
DATE 2-11-58 DEPUTY DIRECTOR, PLANNING & PROGRAMMING

APPROVED: H. Maschke  
DATE 2-3-58 DEPUTY DIRECTOR, DESIGN & CONSTRUCTION

APPROVED: \_\_\_\_\_  
DATE \_\_\_\_\_ FIRST ASSISTANT DIRECTOR

APPROVED: George J. Haney  
DATE 2-11-58 ACTING DIRECTOR OF HIGHWAYS

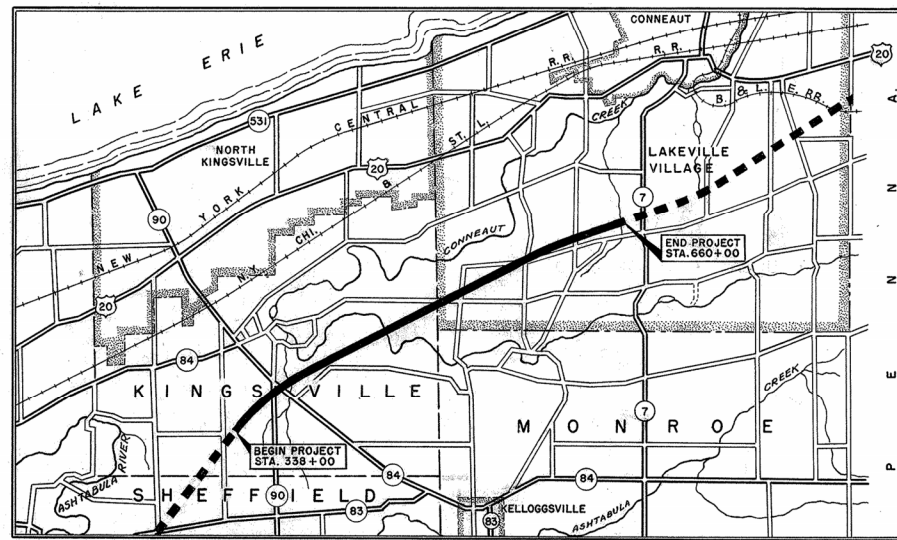
Revised Sheets 323, 342, 343, 344, 350 and 351 April 29, 1958.  
Sheet No. 320, 321, 323, 324 & 325 Revised 6-9-58  
Sheet 325 Revised 6-20-58  
Sheet 351 Revised July 23, 1958.  
Sheets 341, 342, 343, 344 & 347 superseded by Sheets 341A, 342A, 343A, 344A & 347A revised 8-12-58

CONVENTIONAL SIGNS

COUNTY LINE	----
TOWNSHIP LINE	----
SECTION LINE	----
CORPORATION LINE	----
CENTER LINE	----
FENCE LINE	----
RAILROAD	—x—x—
POWER & TELEPHONE POLE LINES	⊕ ⊕ ⊕ ⊕
GUARD RAIL	o o o o
PIPE LINES	----

INDEX OF SHEETS

TITLE PAGE	1
SCHEMATIC LAYOUT PLAN	2-3
TYPICAL SECTIONS	4-7
GENERAL NOTES	8-9
SUMMARY OF QUANTITIES	10-11
CALCULATIONS	12-13
GENERAL SUMMARY	14-15
SPECIAL CONSTRUCTION DETAILS	16-23
PLAN AND PROFILE	24-53
CROSS SECTIONS	54-181
INTERCHANGE DETAILS	182-227
INTERSECTING ROADS	228-290
STRUCTURES, 20' SPAN AND UNDER	291-318
STRUCTURES OVER 20' SPAN	319-353
RIGHT-OF-WAY	354-379
SOIL PROFILE (ATB-1-19.20)	1-6
" " (ATB-1-22.12)	1-5
UTILITY FORCE ACCOUNT WORK - M <sup>c</sup> CONNELL PIPELINE CO.	379



LINE DATA		
	WORK	PROJECT
BEGIN	337+85.73	338+00
END	660+45	660+00
GROSS LENGTH	32,259.27 LIN. FT.	32,200.00 LIN. FT.
DEDUCT FOR EQUA'NS.	663.53 LIN. FT.	664.26 LIN. FT.
STA. 338+00.73 BACK = STA. 338+00.00 AHEAD		
STA. 430+83.03 BACK = STA. 430+53.58 AHEAD		
STA. 604+48.55 BACK = STA. 610+88.21 AHEAD		
ADDITIONS (LOCAL RDS)	15,147.28 LIN. FT.	
(SEE SHEET NO. 13)		
NET LENGTH	46,743.02 LIN. FT.	31,535.74 LIN. FT.
	OR 8.853 MILES	OR 5.973 MILES

PORTION TO BE IMPROVED  
STATE HIGHWAYS  
OTHER ROADS  
DETOURS

SCALES

PLAN  
PROFILE - HORIZONTAL  
PROFILE - VERTICAL  
CROSS SECTIONS

1" = 50'  
1" = 50'  
1" = 10'  
1" = 10'

AUG 24 1961  
GROUND PHOTOLAB

PLANS PREPARED BY  
SHAFFER, PARRETT AND ASSOCIATES  
& BROOKHART AND TYO  
CONSULTING ENGINEERS  
MANSFIELD OHIO WOOSTER

**DEPARTMENT OF COMMERCE  
BUREAU OF PUBLIC ROADS**

APPROVED: \_\_\_\_\_  
DIVISION ENGINEER DATE

APPROVED: H. Schmitt  
DATE 2-3-58 TRAFFIC ENGINEER

SUPPLEMENTAL SPECIFICATIONS	
S-114	REV. 8-1-57
E-101	1-1-57
B-119	REV. 8-11-57
NO. I-125	11-6-57
NO. I-127	11-16-57
NO. 5	6-8-55
NO. 18	REV. 2-6-57
M-206.14	7-15-49
M-106.6(d)	12-4-57

STANDARD CONSTRUCTION DRAWINGS							
DRAWING NO.	DATE	DRAWING NO.	DATE	DRAWING NO.	DATE	DRAWING NO.	DATE
L-3	4-1-50	HW-A & B	7-15-57	I-8 CB NO.6	5-1-52	I-15 NO.2-B	6-1-57
L-3-A	4-1-50	HW-C	7-15-57	I-8 CB NO.7	5-1-52	I-21-23	8-1-56
RI-1	1-3-55	S-27 PC-3	2-20-45	I-8 MH NO.1	5-1-52	6-7.07	6-1-56
DR-1	1-3-55	S-27 PC-4	1-4-54	I-8 MH NO.1A	1-3-55	BT 50,70,71 E NO.1	10-1-47
T-35	1-2-56	I-1,2,3,4 & 5	2-20-45	I-12	7-1-54	CS-2-54 SH. 1 & 2	12-1-54
B-T-71R	3-2-23	I-8 CB 2-3 & 2-4	5-1-52	I-14 G	1-22-52	AS 1-54	12-1-54
T.J.	7-1-55	I-8 CB NO.4	6-1-57	I-15 NO.2	6-1-57	CSB-2-56 SH.2 & 3	12-3-56
L.J. NO.1	7-1-55	I-8 CB NO.5	6-1-57	I-15 NO.2A	6-1-57	AR-1-57	4-9-57

DRAWING NO.	DATE
RB-1-55	3-1-55
SP-53	7-21-53
I-15 No.1	8-1-55
F-1	4-1-57

FILE NO.	ATB-1-(19.20-22.12)
DATE OF LETTING	
CONTRACT NO.	

ATB-1-(19.20-22.12)

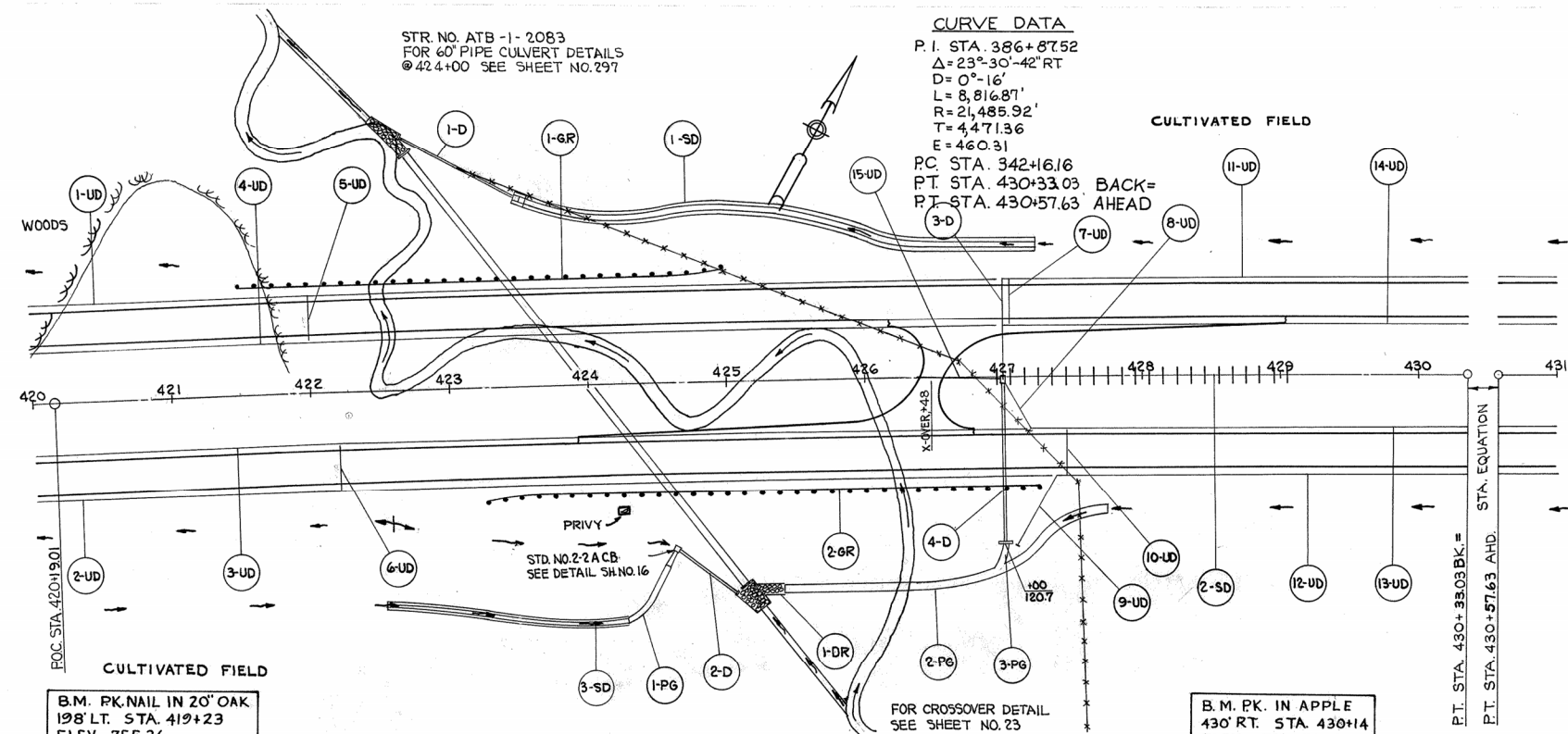
STR. NO. ATB-1-2083  
FOR 60" PIPE CULVERT DETAILS  
@ 424+00 SEE SHEET NO. 297

**CURVE DATA**

P.I. STA. 386+87.52  
Δ = 23°-30'-42" RT  
D = 0°-16'  
L = 8,816.87'  
R = 21,485.92'  
T = 4,471.36  
E = 460.31

PC STA. 342+16.16  
PT STA. 430+33.03 BACK=  
RT STA. 430+57.63 AHEAD

CULTIVATED FIELD

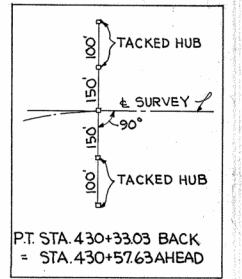
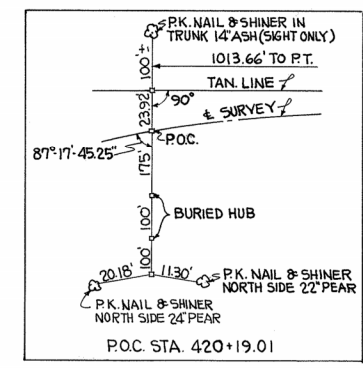
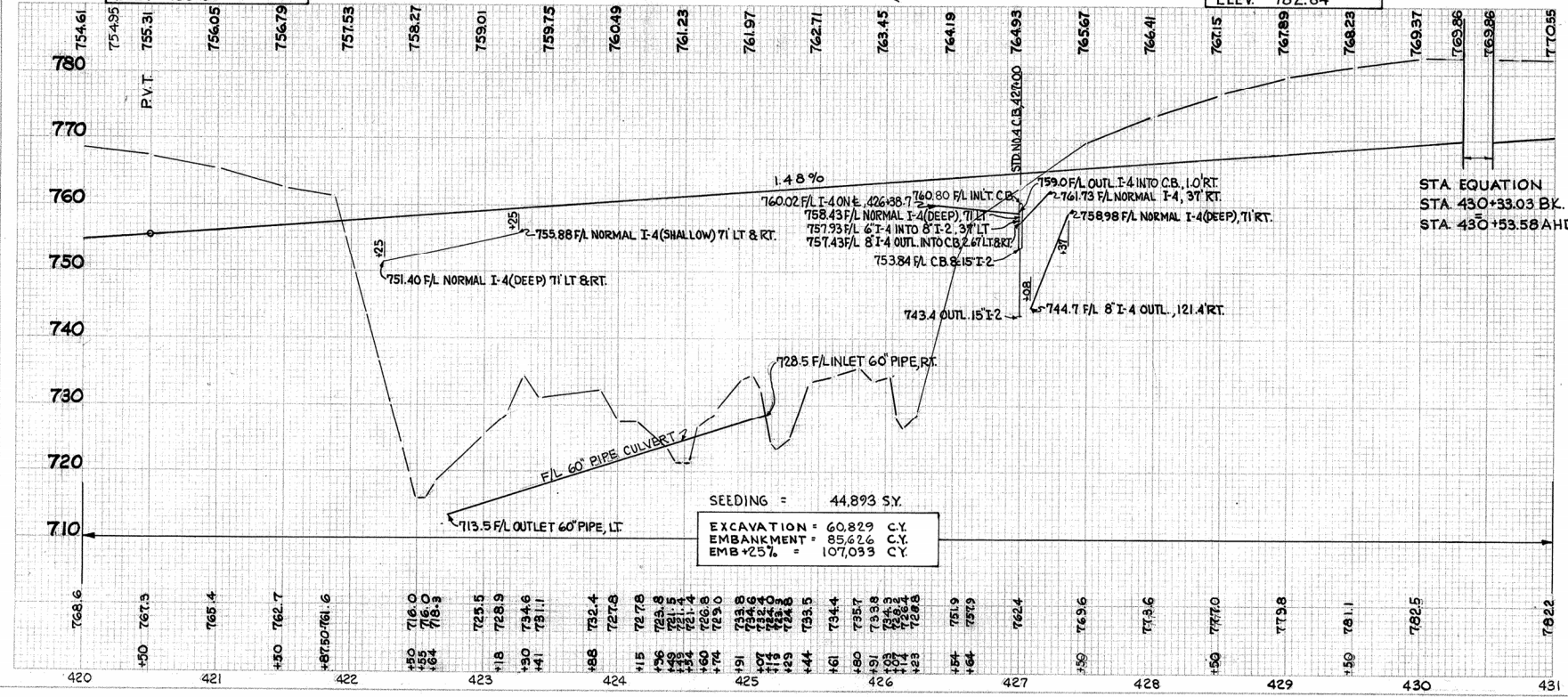


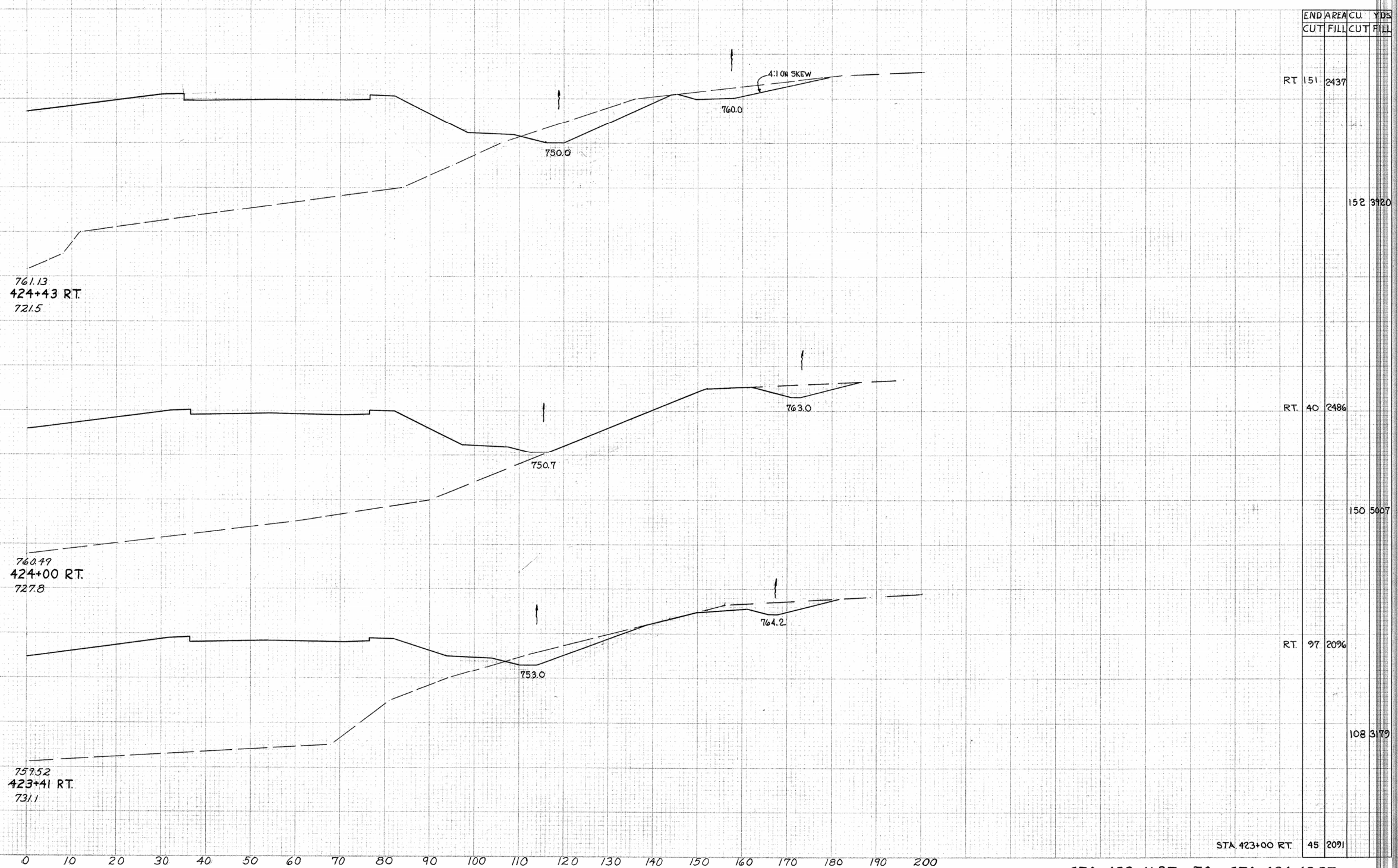
ITEM	STATION	I-15		I-10		I-8		I-2		I-5		S-1		I-14		I-10	
		GUARD RAIL	STEEL BEAM	SODDING	CATCH BASINS	STORM SEWER	PIPE SPECIALS	SEC. M. & C.	SEC. M. & C.	SEC. M. & C.	SEC. M. & C.	CLASS. CONC.	CLASS. CONC.	PAVED CUTTER	PAVED CUTTER	PAVED CUTTER	PAVED CUTTER
		STD. TYPE (DEEP)	TYPE	TYPE	TYPE	TYPE	TYPE	TYPE	TYPE	TYPE	TYPE	TYPE	TYPE	TYPE	TYPE	TYPE	TYPE
1-GR	421+50 TO 424+98.7, LT.																
2-GR	423+25 TO 427+26.5, RT.																
1-D	423+52, 136' LT.																
2-D	424+62, 120' RT.																
4-D	427+00 RT.																
1-SD	423+57 TO 427+25, LT.																
2-SD	426+25 TO 427+07, MED.																
3-SD	422+50 TO 424+25, RT.																
1-PG	424+25 TO 424+57, RT.																
2-PG	425+40 TO 427+75, RT.																
3-PG	427+00 RT.																
1-DR	425+23 TO 425+40, RT.																
TOTALS		750	887.5	115	1	1	1	118	54	88	2	2	33	0.56	67	250	13

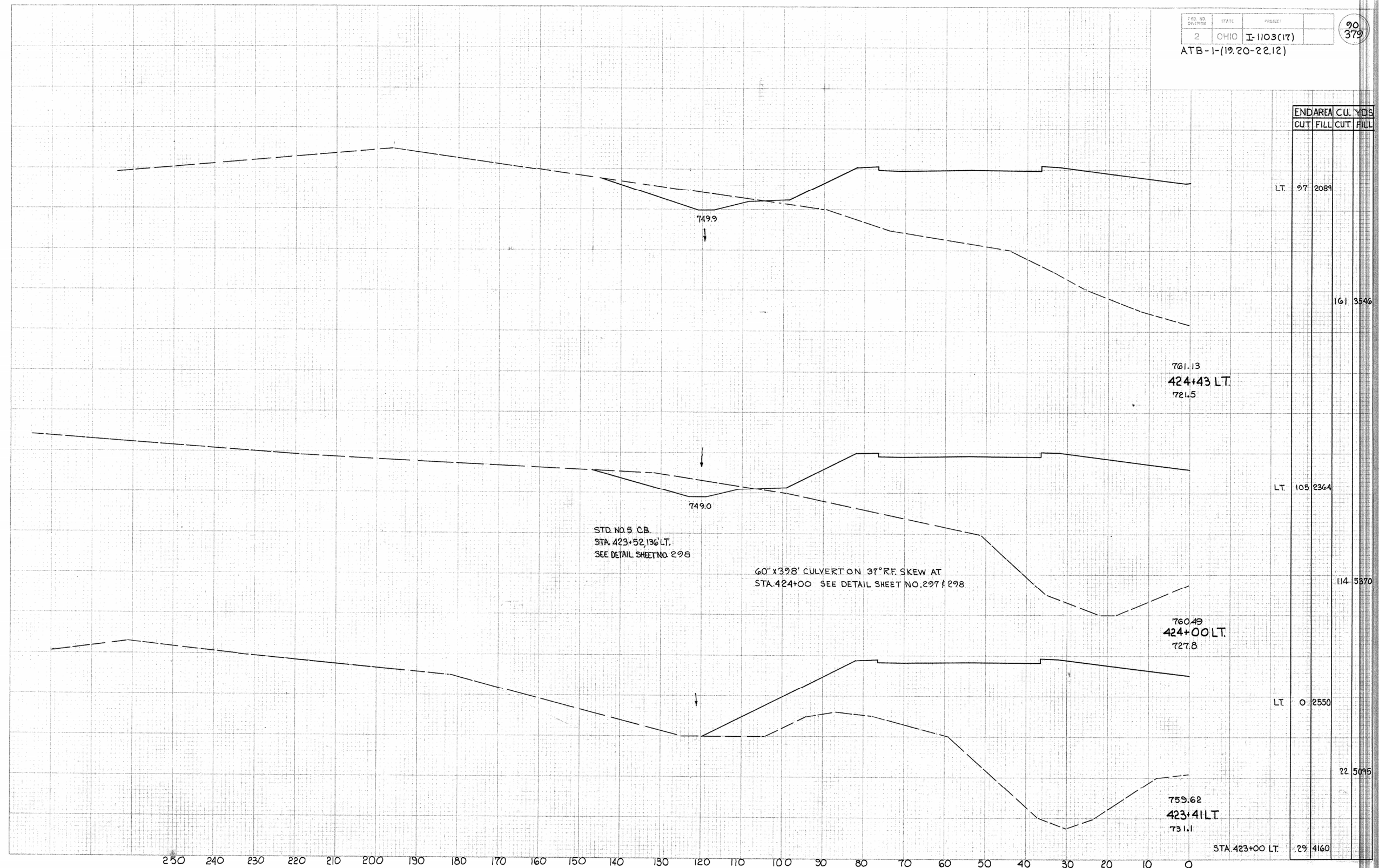
ITEM	STATION	I-2		I-4		I-4		I-4		I-5			
		STORM SEWER	UNDERDRAINS	UNDERDRAINS	UNDERDRAINS	OUTLETS FOR UNDERDRAINS	PIPE SPECIALS	PIPE SPECIALS	PIPE SPECIALS	PIPE SPECIALS	PIPE SPECIALS	PIPE SPECIALS	
		SEC. M. & C. (SHALLOW)	SEC. M. & C. (DEEP)	SEC. M. & C. (SHALLOW)	SEC. M. & C. (DEEP)	SEC. M. & C. (SHALLOW)	SEC. M. & C. (DEEP)	SEC. M. & C. (SHALLOW)	SEC. M. & C. (DEEP)	EA	EA	EA	EA
1-UD	420+00 TO 426+96, TI LT.												
2-UD	420+00 TO 427+39, TI RT.												
3-UD	420+00 TO 427+16, 37 RT.												
4-UD	420+00 TO 426+96, 37 LT.												
5-UD	422+00 LT.												
6-UD	422+20 RT.												
7-UD	427+05 LT.												
8-UD	427+25 LT.												
9-UD	427+08 TO 427+36, RT.												
10-UD	427+45 RT.												
11-UD	427+01 TO 431+00, TI LT.												
12-UD	427+37 TO 431+00, TI RT.												
13-UD	427+20 TO 431+00, 37 RT.												
14-UD	427+01 TO 431+00, 37 LT.												
15-UD	426+38 TO 426+98, MED.												
3-D	427+00 LT.												
TOTALS		54	31.49	1359	72					1	1	4	2

B.M. PK. NAIL IN 20" OAK  
19' LT. STA. 419+23  
ELEV. 755.36

B.M. PK. IN APPLE  
430' RT. STA. 430+14  
ELEV. 782.84



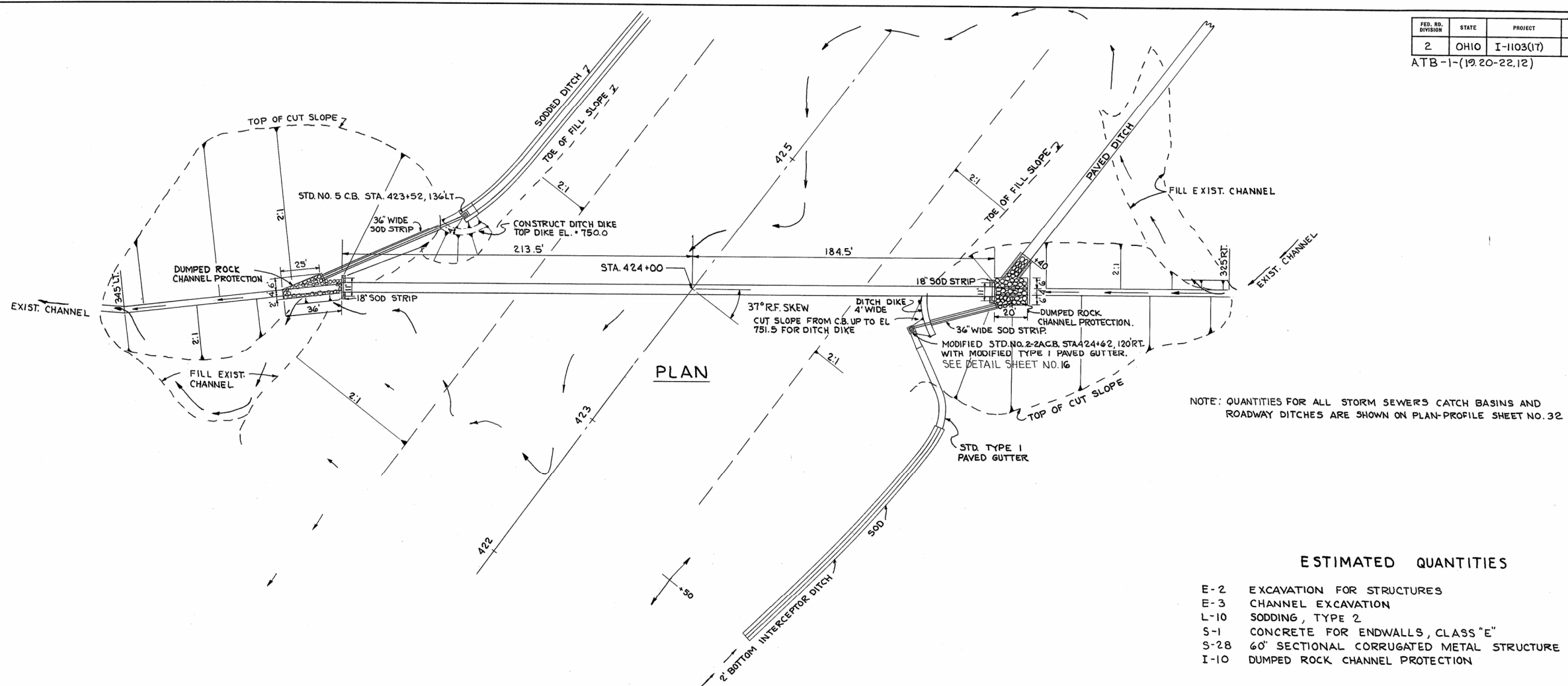




STD. NO. 5 C.B.  
STA. 423+52, 136 LT.  
SEE DETAIL SHEET NO. 298

60' x 398' CULVERT ON 37° R.F. SKEW AT  
STA. 424+00 SEE DETAIL SHEET NO. 297 & 298

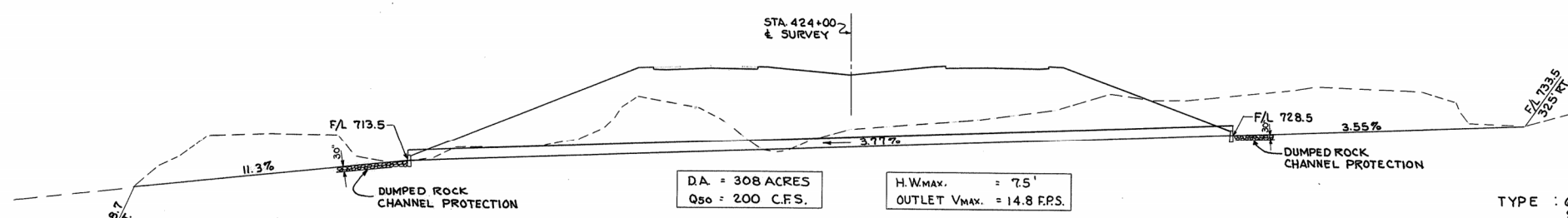
	END AREA		CU. YDS	
	CUT	FILL	CUT	FILL
LT. 97	2089			
		161	3546	
LT. 105	2364			
		114	5370	
LT. 0	2550			
		22	5095	
STA. 423+00 LT.	29	4160		



NOTE: QUANTITIES FOR ALL STORM SEWERS CATCH BASINS AND ROADWAY DITCHES ARE SHOWN ON PLAN-PROFILE SHEET NO. 32

**ESTIMATED QUANTITIES**

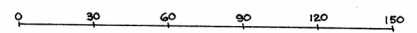
E-2	EXCAVATION FOR STRUCTURES	136 CU.YDS
E-3	CHANNEL EXCAVATION	13,199 CU.YDS
L-10	SODDING, TYPE 2	92 SQ.YDS
S-1	CONCRETE FOR ENDWALLS, CLASS "E"	5.5 CU.YDS
S-28	60" SECTIONAL CORRUGATED METAL STRUCTURE	398.0 LIN.FT.
I-10	DUMPED ROCK CHANNEL PROTECTION	740 CU.YDS.



DA = 308 ACRES  
Q<sub>50</sub> = 200 C.F.S.

H.W.<sub>max.</sub> = 7.5'  
OUTLET V<sub>max.</sub> = 14.8 F.P.S.

**LONGITUDINAL SECTION**

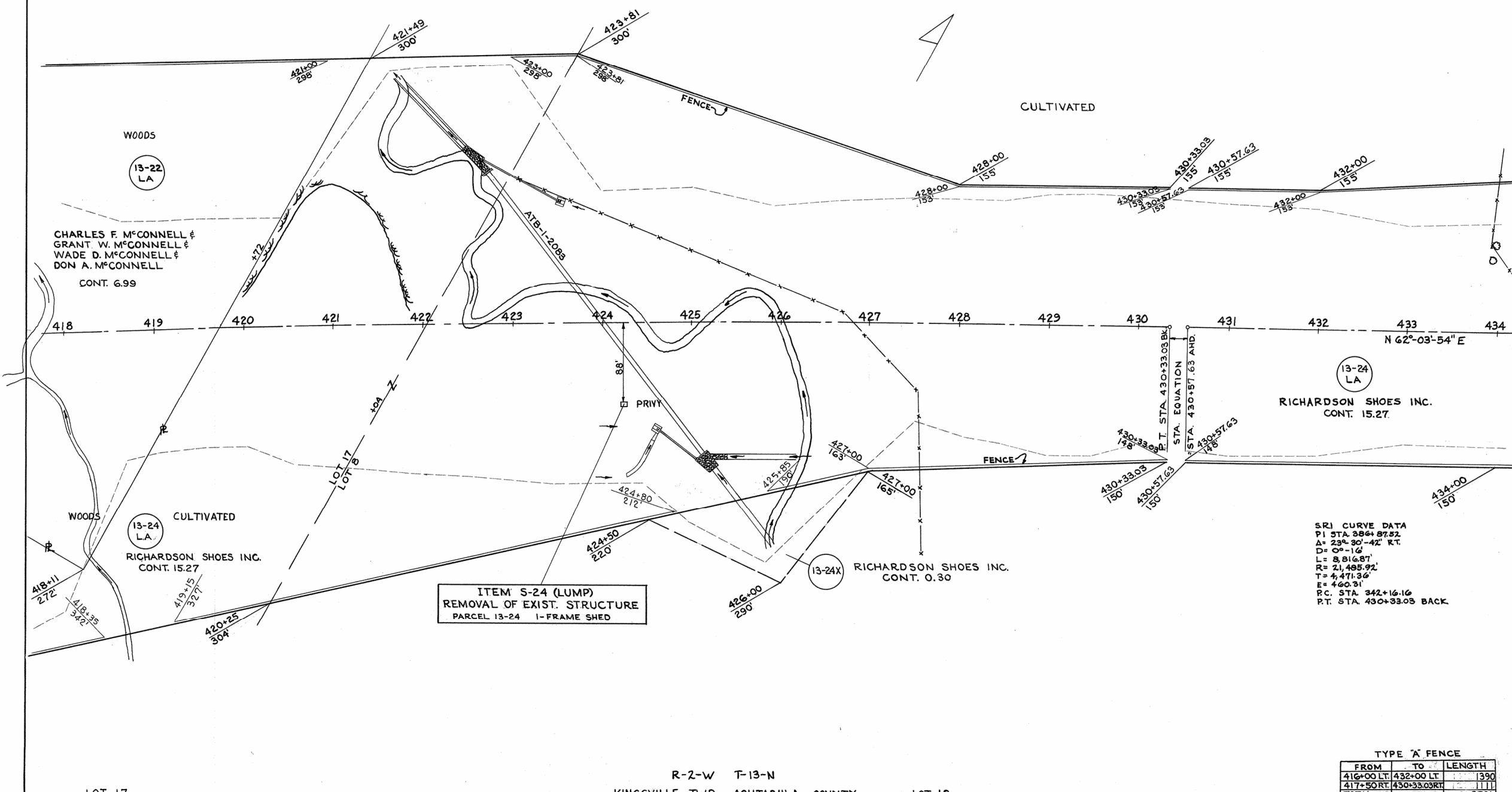


SCALE 1"=30'

**CULVERT DATA**

TYPE : 60" S-28 SEC.M-64 (9) 10-8 Ga.  
SECTIONAL CORRUGATED METAL STRUCTURE  
SIZE : 60' x 398'  
WORK REQUIRED : CONSTRUCT CHANNEL, CHANNEL PROTECTION, AND  
CULVERT WITH STD. S.P. 53 ENDWALLS AS SHOWN.

PIPE CULVERT STA.424+00  
STR. No. ATB-1-2083



SRI CURVE DATA  
 PI STA. 386+87.52  
 A= 23° 30' 42" RT.  
 D= 0° 16'  
 L= 8,816.87'  
 R= 21,485.92'  
 T= 4,471.36'  
 E= 460.31'  
 RC STA. 342+16.16  
 RT STA. 430+33.03 BACK

TYPE 'A' FENCE		
FROM	TO	LENGTH
416+00 LT	432+00 LT	390
417+50 RT	430+33.03 RT	111
TOTAL		2501