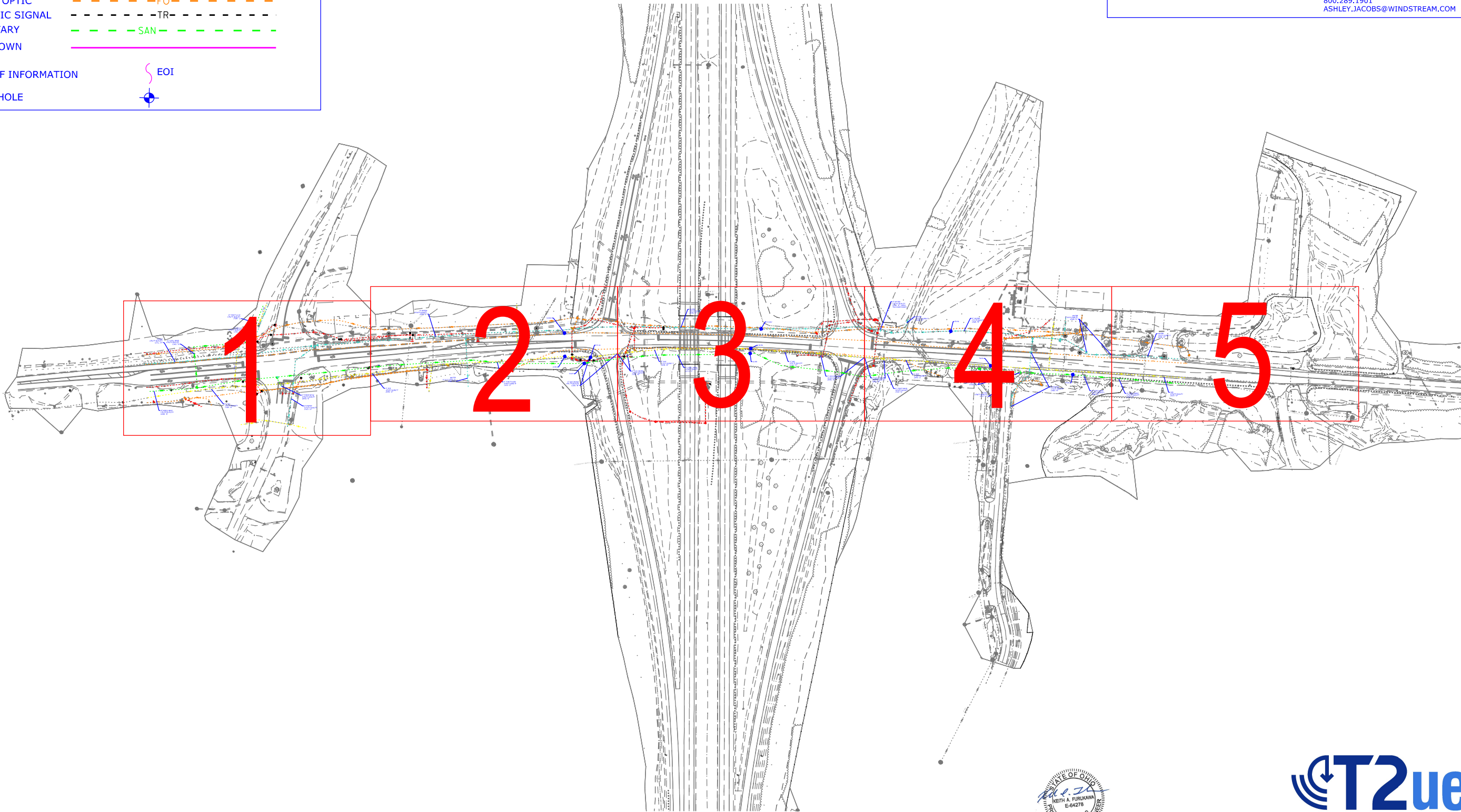


**SUBSURFACE UTILITY LOCATION SERVICES
OHIO DEPARTMENT OF TRANSPORTATION DISTRICT 11
BEL-70-9.35
PID No.: 120547
UNION TOWNSHIP, BELMONT COUNTY OHIO**

UTILITY CONTACTS	
AMERICAN ELECTRIC POWER JAMES VANSICKLE 614.883.7871 JDVANSICKLE@AEP.COM	COLUMBIA GAS OF OHIO NICOLE GEARY 300 LURAY DRIVE WINTERSVILLE, OH 43953 740.266.5942 NGEARY@NISOURCE.COM
AT&T BARRETT TAMASOVICH 740.454.3552 BT2178@ATT.COM	MARKWEST JOHN COURTS 330.401.6063
BELMONT COUNTY WATER AND SEWER DISTRICT BRIAN STREET BRIAN.STREET@BELMONTCOUNTYWATER.COM	WINDSTREAM ASHLEY JACOBS 800.289.1901 ASHLEY.JACOBS@WINDSTREAM.COM

LEGEND	
UNLESS OTHERWISE NOTED, UTILITY LINE LIMITS DEPICTED REPRESENT FIELD DESIGNATING LIMITS AND NOT ENDPOINT OF UTILITIES.	
ELECTRIC	---E---
CABLE TV	---CTV---
TELEPHONE	---T---
WATER	---W---
GAS	---G---
FIBER OPTIC	---FO---
TRAFFIC SIGNAL	---TR---
SANITARY	---SAN---
UNKNOWN	---
END OF INFORMATION	EOI
TEST HOLE	⊕



REVIEWED BY: JBT - 9/6/24	SUBMITTED: 9/10/24
DRAWN BY: KLC	CHECKED BY: MCS - 9/9/24

T2UE SUL LOCATION PLAN

**BEL-70-9.35
PID No.: 120547**

UTILITIES SHOWN IN COLOR ON THESE PLANS AS DEPICTED IN THE LEGEND HAVE BEEN INVESTIGATED BY T2UE IN ACCORDANCE WITH SUE/SULS INDUSTRY STANDARDS. ALL OTHER INFORMATION SHOWN HAS BEEN PROVIDED TO T2UE BY OTHERS. T2UE'S QL-B FIELD INVESTIGATION WAS PERFORMED 6/17/24 TO 8/06/24. T2UE'S QL-A FIELD INVESTIGATION WAS PERFORMED 11/13/24 TO 12/19/24. CHANGES TO UTILITIES AFTER 8/06/24 MAY HAVE BEEN MADE AND THEREFORE MAY RESULT IN VARIANCES FROM THIS PLAN. CONSIDERATION SHOULD BE GIVEN TO UPDATING THIS PLAN IF DEEMED ADVISABLE PRIOR TO FINAL DESIGN AND CONSTRUCTION.

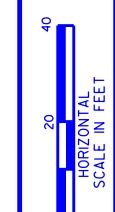
REV 1: 1/22/25 ADDED TEST HOLES #1-10

ALL UTILITIES QUALITY LEVEL "B" UNLESS NOTED OTHERWISE.
SEE TEST HOLE DATA SUMMARY FOR DETAILED UTILITY INFORMATION AT TEST HOLE LOCATIONS.



Utility Quality Level "A" : Test Hole
Utility Quality Level "B" : Designating
Utility Quality Level "C" : Research With Survey
Utility Quality Level "D" : Records Research

COVER



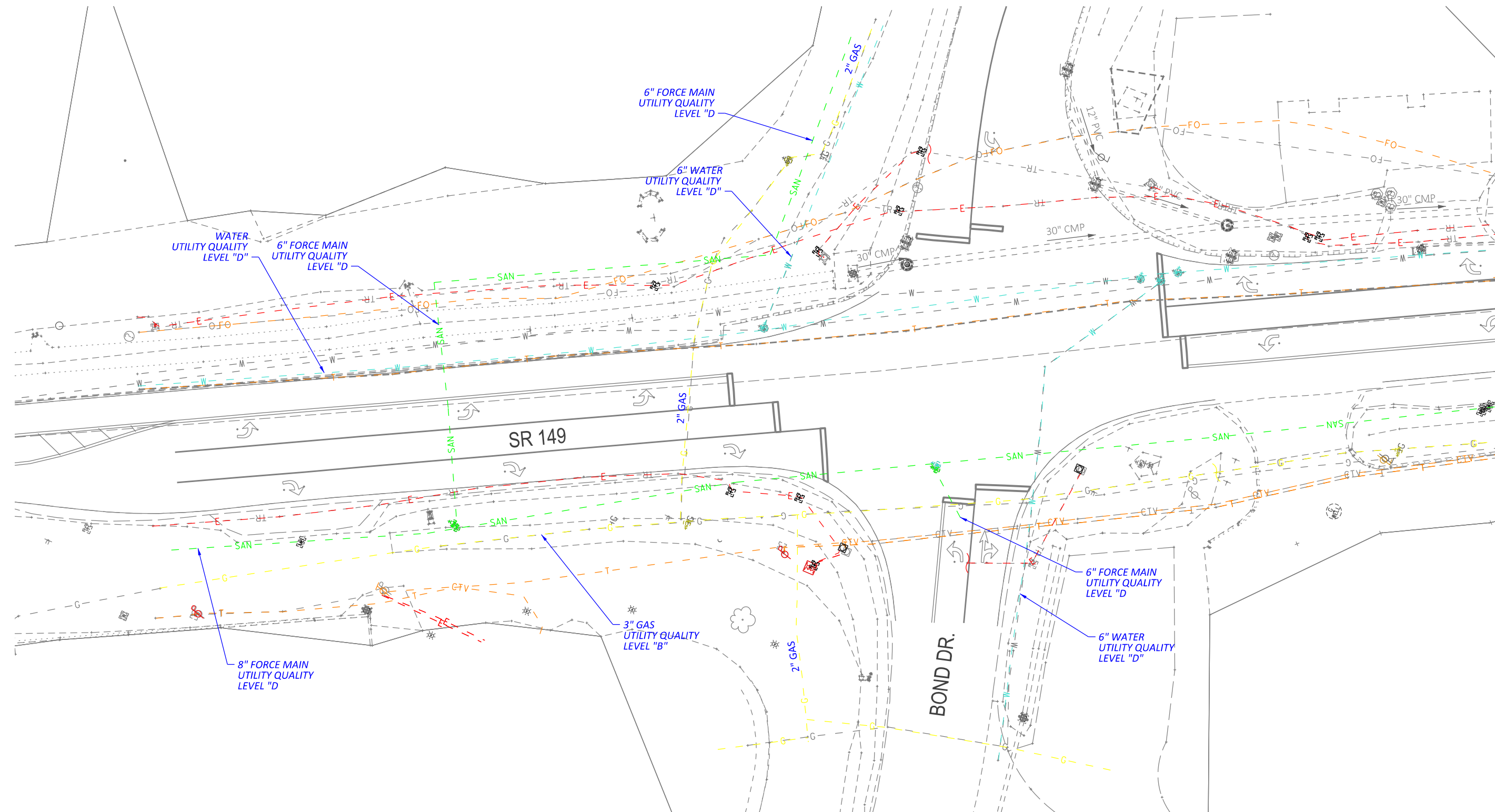
DRAWN BY: KLC
 CHECKED BY: KFS
 REVISION: 9/6/24
 SUBMITTED: 9/10/24

MATCH TO SHEET 2

T2UE SUL LOCATION PLAN

BEL-70-9.35
 PID No.: 120547

1/5



UTILITIES SHOWN IN COLOR ON THESE PLANS AS DEPICTED IN THE LEGEND HAVE BEEN INVESTIGATED BY T2UE IN ACCORDANCE WITH SUE/SULS INDUSTRY STANDARDS. ALL OTHER INFORMATION SHOWN HAS BEEN PROVIDED TO T2UE BY OTHERS. T2UE'S QL-B FIELD INVESTIGATION WAS PERFORMED 6/17/24 TO 8/06/24. T2UE'S QL-A FIELD INVESTIGATION WAS PERFORMED 11/13/24 TO 12/19/24. CHANGES TO UTILITIES AFTER 8/06/24 MAY HAVE BEEN MADE AND THEREFORE MAY RESULT IN VARIANCES FROM THIS PLAN. CONSIDERATION SHOULD BE GIVEN TO UPDATING THIS PLAN IF DEEMED ADVISABLE PRIOR TO FINAL DESIGN AND CONSTRUCTION.

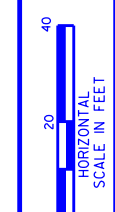
REV 1: 1/22/25 ADDED TEST HOLES #1-10

ALL UTILITIES QUALITY LEVEL "B" UNLESS NOTED OTHERWISE.
 SEE TEST HOLE DATA SUMMARY FOR DETAILED UTILITY INFORMATION AT TEST HOLE LOCATIONS.



Utility Quality Level "A" : Test Hole
 Utility Quality Level "B" : Designating
 Utility Quality Level "C" : Research With Survey
 Utility Quality Level "D" : Records Research

OH09501801



DRAWN BY: JAW - 9/6/24
 CHECKED BY: KLC
 REVISIONS: 9/10/24

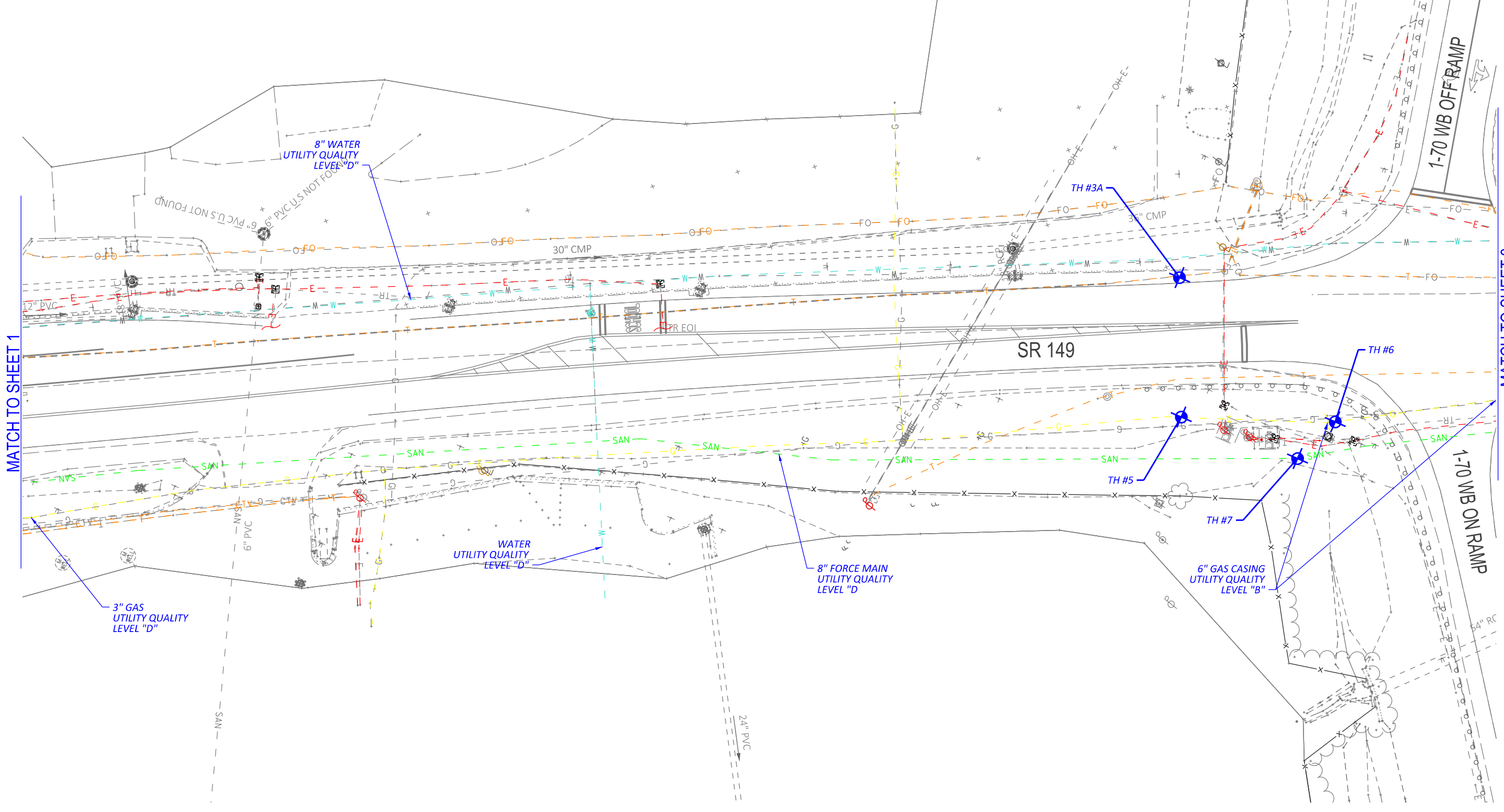
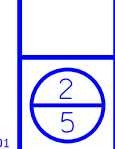
REVIEWED BY: JAW - 9/6/24
 SUBMITTED: 9/10/24

T2UE SUL LOCATION PLAN

MATCH TO SHEET 1

MATCH TO SHEET 3

BEL-70-9.35
 PID No.: 120547



UTILITIES SHOWN IN COLOR ON THESE PLANS AS DEPICTED IN THE LEGEND HAVE BEEN INVESTIGATED BY T2UE IN ACCORDANCE WITH SUE/SULS INDUSTRY STANDARDS. ALL OTHER INFORMATION SHOWN HAS BEEN PROVIDED TO T2UE BY OTHERS. T2UE'S QL-B FIELD INVESTIGATION WAS PERFORMED 6/17/24 TO 8/06/24. T2UE'S QL-A FIELD INVESTIGATION WAS PERFORMED 11/13/24 TO 12/19/24. CHANGES TO UTILITIES AFTER 8/06/24 MAY HAVE BEEN MADE AND THEREFORE MAY RESULT IN VARIANCES FROM THIS PLAN. CONSIDERATION SHOULD BE GIVEN TO UPDATING THIS PLAN IF DEEMED ADVISABLE PRIOR TO FINAL DESIGN AND CONSTRUCTION.

REV 1: 1/22/25 ADDED TEST HOLES #1-10

ALL UTILITIES QUALITY LEVEL "B" UNLESS NOTED OTHERWISE.
 SEE TEST HOLE DATA SUMMARY FOR DETAILED UTILITY INFORMATION AT TEST HOLE LOCATIONS.



Utility Quality Level "A" : Test Hole
 Utility Quality Level "B" : Designating
 Utility Quality Level "C" : Research With Survey
 Utility Quality Level "D" : Records Research

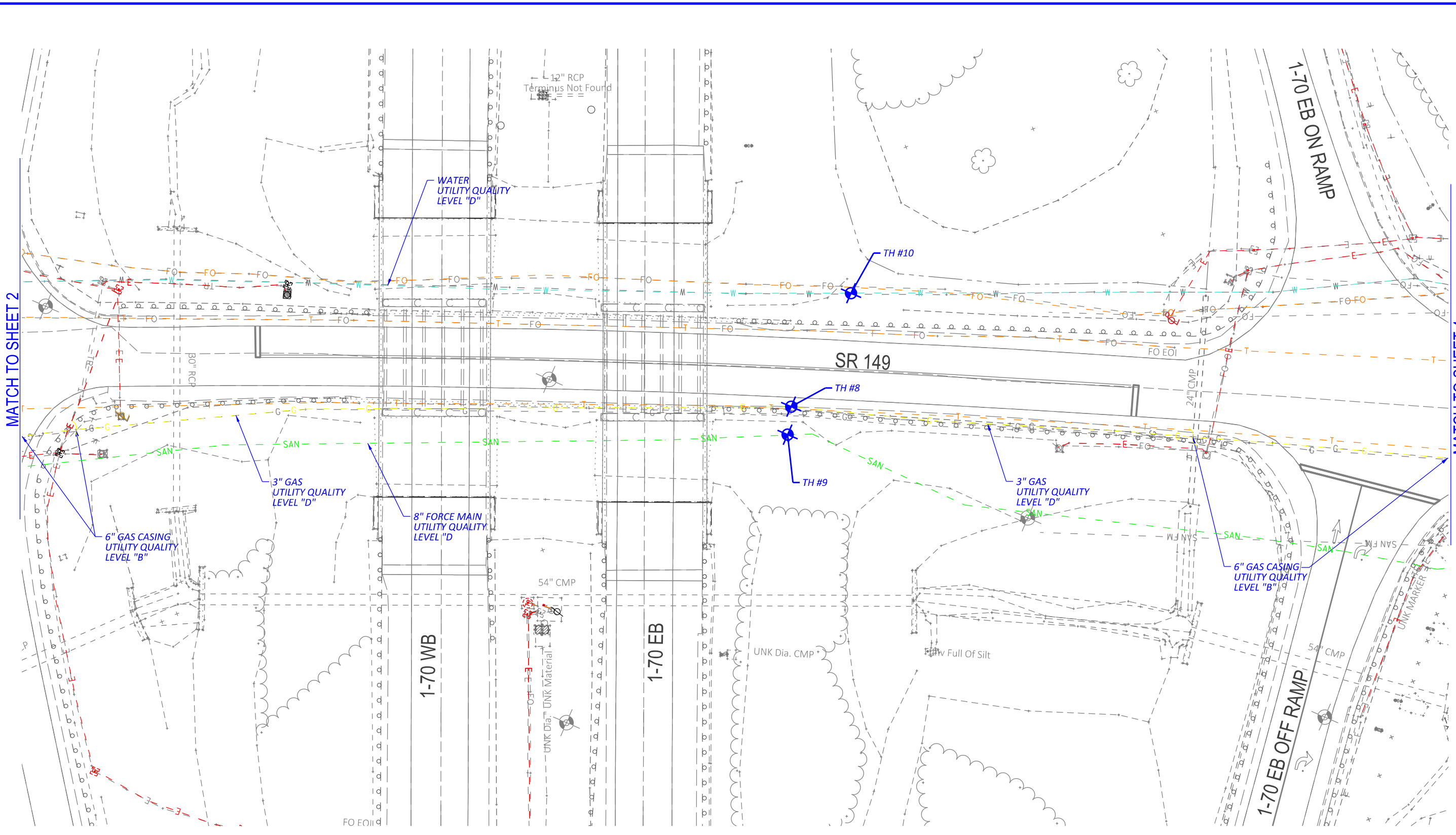


DRAWN BY: KLC
 CHECKED BY: KFS
 REVISION: 9/6/24
 SUBMITTED: 9/10/24

T2UE SUL LOCATION PLAN

BEL-70-9.35
 PID No.: 120547

3/5



UTILITIES SHOWN IN COLOR ON THESE PLANS AS DEPICTED IN THE LEGEND HAVE BEEN INVESTIGATED BY T2UE IN ACCORDANCE WITH SUE/SULS INDUSTRY STANDARDS. ALL OTHER INFORMATION SHOWN HAS BEEN PROVIDED TO T2UE BY OTHERS. T2UE'S QL-B FIELD INVESTIGATION WAS PERFORMED 6/17/24 TO 8/06/24. T2UE'S QL-A FIELD INVESTIGATION WAS PERFORMED 11/13/24 TO 12/19/24. CHANGES TO UTILITIES AFTER 8/06/24 MAY HAVE BEEN MADE AND THEREFORE MAY RESULT IN VARIANCES FROM THIS PLAN. CONSIDERATION SHOULD BE GIVEN TO UPDATING THIS PLAN IF DEEMED ADVISABLE PRIOR TO FINAL DESIGN AND CONSTRUCTION.

REV 1: 1/22/25 ADDED TEST HOLES #1-10

ALL UTILITIES QUALITY LEVEL "B" UNLESS NOTED OTHERWISE.
 SEE TEST HOLE DATA SUMMARY FOR DETAILED UTILITY INFORMATION AT TEST HOLE LOCATIONS.



Utility Quality Level "A" : Test Hole
 Utility Quality Level "B" : Designating
 Utility Quality Level "C" : Research With Survey
 Utility Quality Level "D" : Records Research

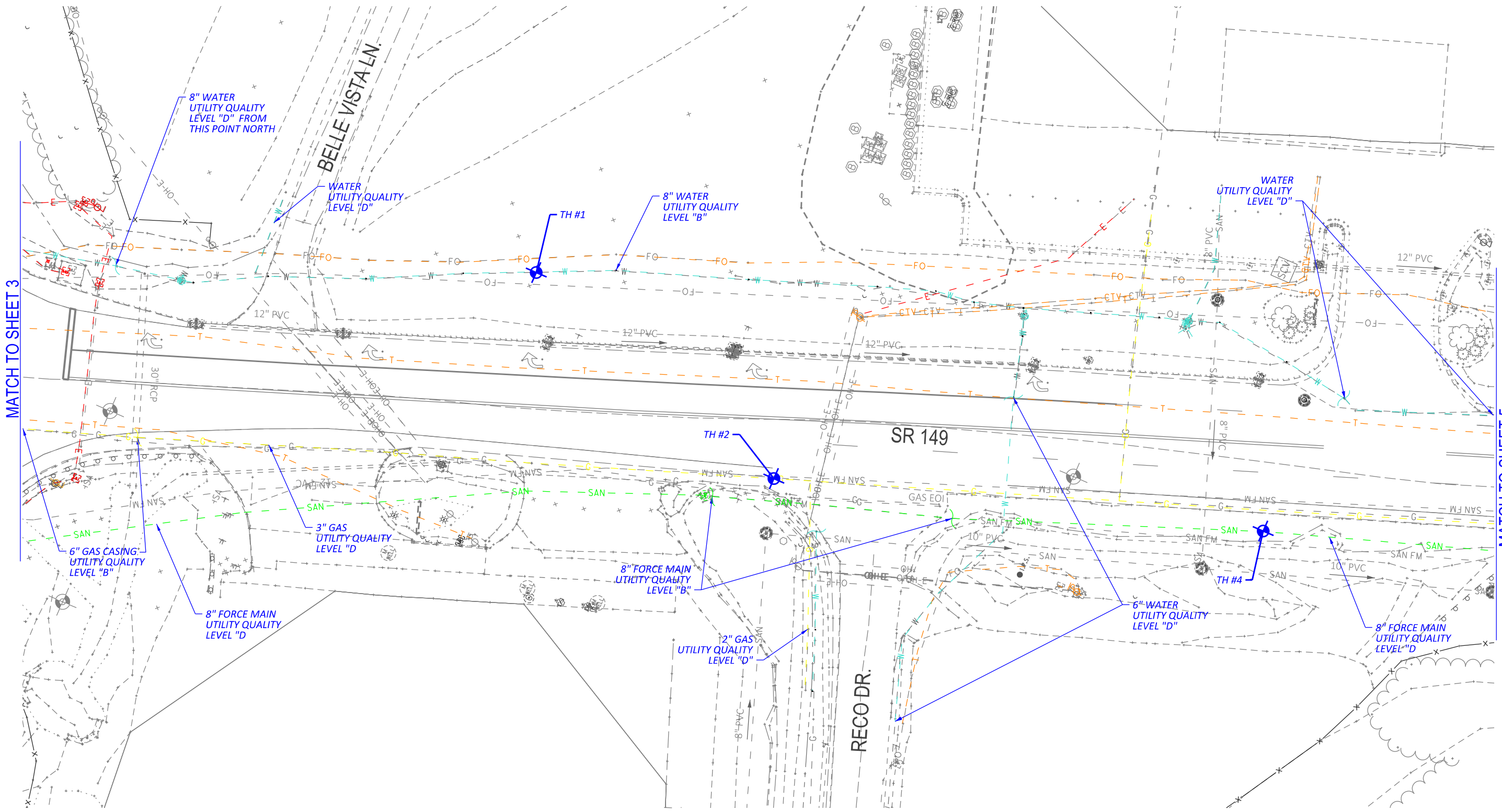


DRAWN BY: KLC
 CHECKED BY: KFS
 REVIEWED BY: JAW
 SUBMITTED: 9/10/24
 DATE: 9/6/24

T2UE SUL LOCATION PLAN

BEL-70-9.35
 PID No.: 120547

4
5



UTILITIES SHOWN IN COLOR ON THESE PLANS AS DEPICTED IN THE LEGEND HAVE BEEN INVESTIGATED BY T2UE IN ACCORDANCE WITH SUE/SULS INDUSTRY STANDARDS. ALL OTHER INFORMATION SHOWN HAS BEEN PROVIDED TO T2UE BY OTHERS. T2UE'S QL-B FIELD INVESTIGATION WAS PERFORMED 6/17/24 TO 8/06/24. T2UE'S QL-A FIELD INVESTIGATION WAS PERFORMED 11/13/24 TO 12/19/24. CHANGES TO UTILITIES AFTER 8/06/24 MAY HAVE BEEN MADE AND THEREFORE MAY RESULT IN VARIANCES FROM THIS PLAN. CONSIDERATION SHOULD BE GIVEN TO UPDATING THIS PLAN IF DEEMED ADVISABLE PRIOR TO FINAL DESIGN AND CONSTRUCTION.

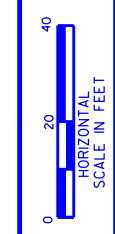
REV 1: 1/22/25 ADDED TEST HOLES #1-10

ALL UTILITIES QUALITY LEVEL "B" UNLESS NOTED OTHERWISE.
 SEE TEST HOLE DATA SUMMARY FOR DETAILED UTILITY INFORMATION AT TEST HOLE LOCATIONS.



Utility Quality Level "A" : Test Hole
 Utility Quality Level "B" : Designating
 Utility Quality Level "C" : Research With Survey
 Utility Quality Level "D" : Records Research

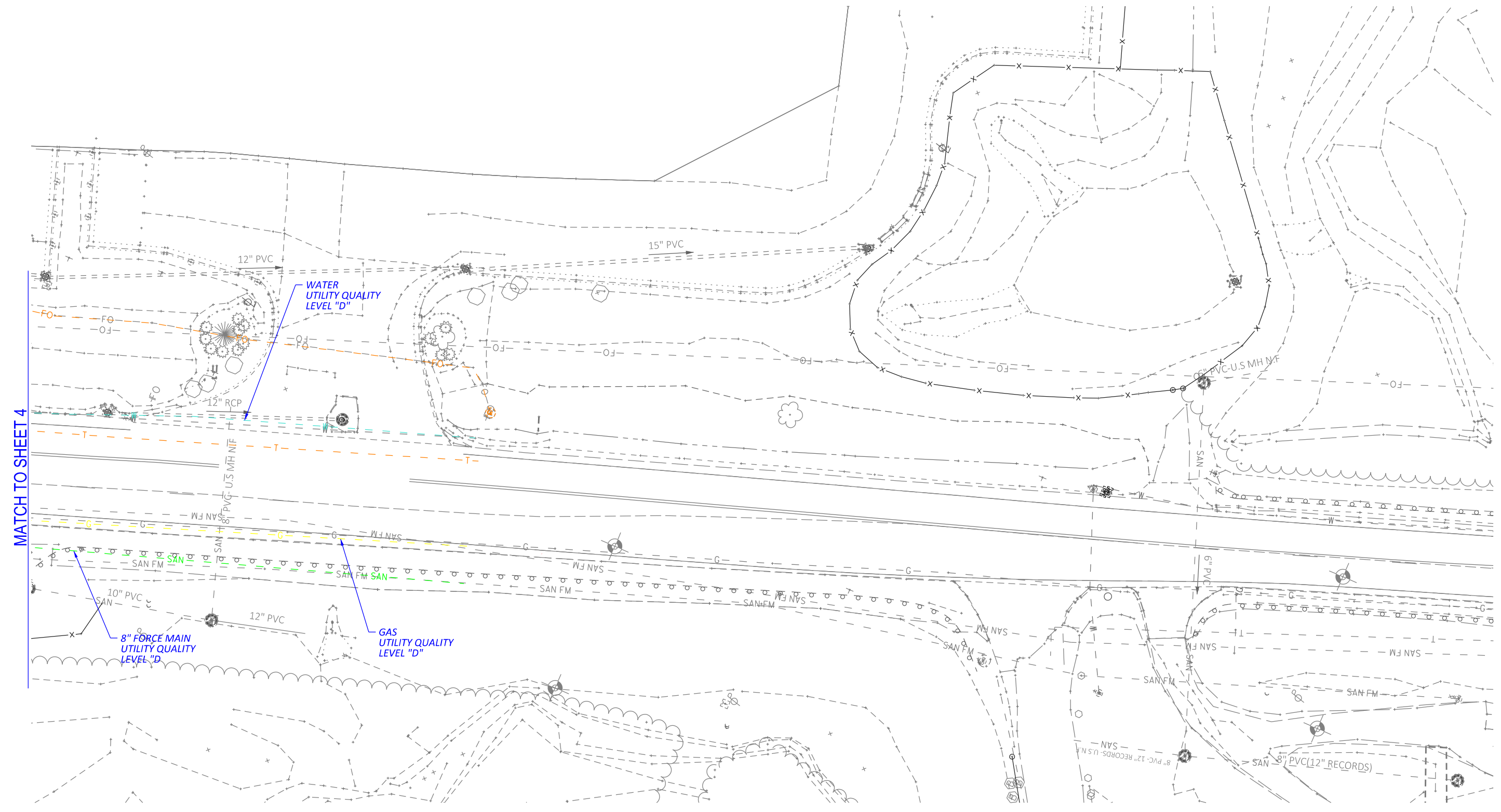
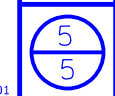
OH09501801



DRAWN BY: KLC
 CHECKED BY: KFS
 REVISION: 9/6/24
 SUBMITTED: 9/10/24

T2UE SUL LOCATION PLAN

BEL-70-9.35
PID No.: 120547



UTILITIES SHOWN IN COLOR ON THESE PLANS AS DEPICTED IN THE LEGEND HAVE BEEN INVESTIGATED BY T2UE IN ACCORDANCE WITH SUE/SULS INDUSTRY STANDARDS. ALL OTHER INFORMATION SHOWN HAS BEEN PROVIDED TO T2UE BY OTHERS. T2UE'S QL-B FIELD INVESTIGATION WAS PERFORMED 6/17/24 TO 8/06/24. T2UE'S QL-A FIELD INVESTIGATION WAS PERFORMED 11/13/24 TO 12/19/24. CHANGES TO UTILITIES AFTER 8/06/24 MAY HAVE BEEN MADE AND THEREFORE MAY RESULT IN VARIANCES FROM THIS PLAN. CONSIDERATION SHOULD BE GIVEN TO UPDATING THIS PLAN IF DEEMED ADVISABLE PRIOR TO FINAL DESIGN AND CONSTRUCTION.

REV 1: 1/22/25 ADDED TEST HOLES #1-10

ALL UTILITIES QUALITY LEVEL "B" UNLESS NOTED OTHERWISE.
 SEE TEST HOLE DATA SUMMARY FOR DETAILED UTILITY INFORMATION AT TEST HOLE LOCATIONS.



Utility Quality Level "A" : Test Hole
 Utility Quality Level "B" : Designating
 Utility Quality Level "C" : Research With Survey
 Utility Quality Level "D" : Records Research