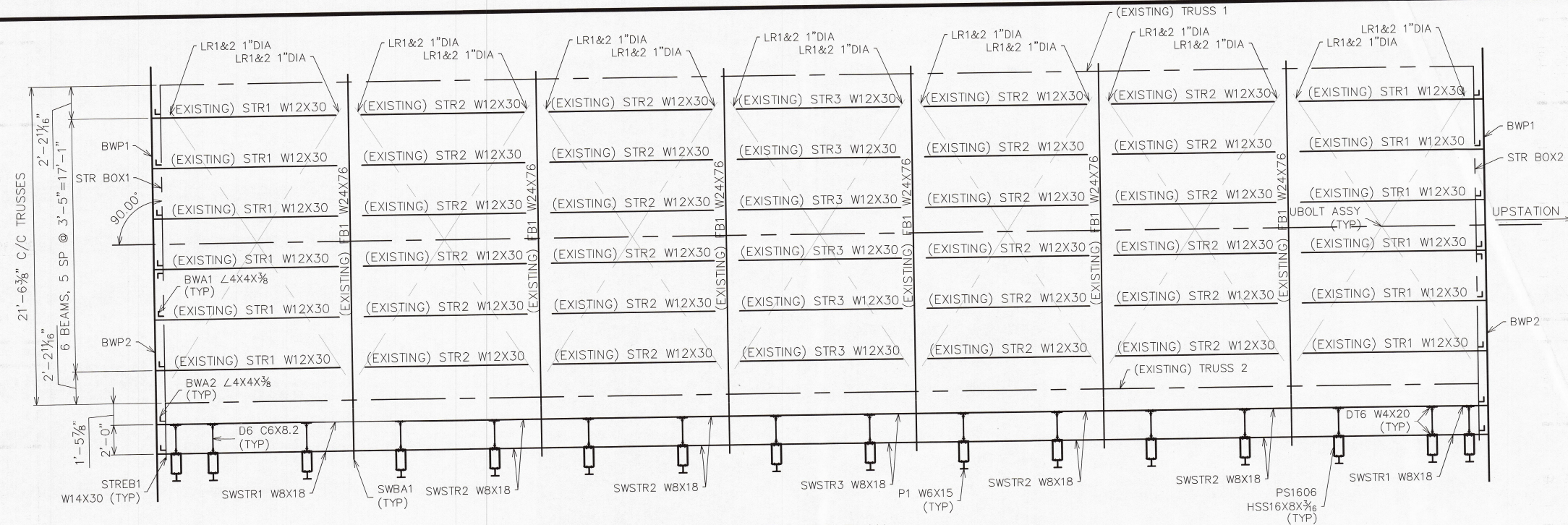


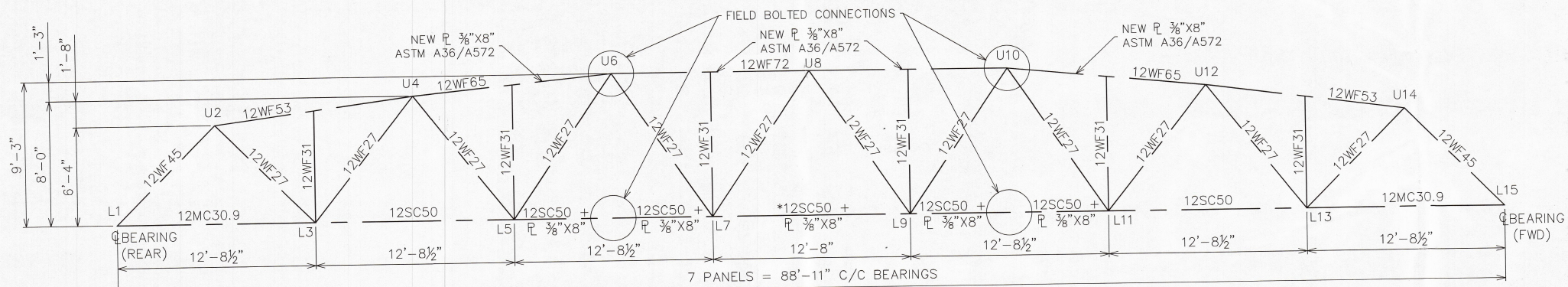


DATE PLOTTED 9/2/2009

S:\JOBS\OHIO\CARROLL\41971-Village of Minerva-Grant St.Rehab\Drawings\41971.dwg

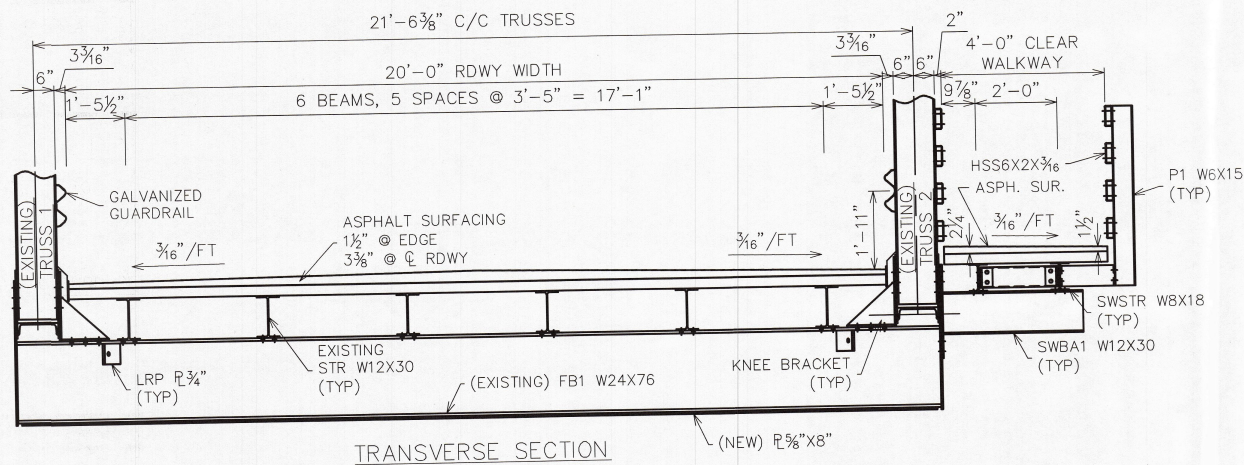


FRAMING PLAN



EXISTING TRUSS BRIDGE DETAIL WITH NEW BOLTED CONNECTION  
TRUSS LIFTING WEIGHT - X K

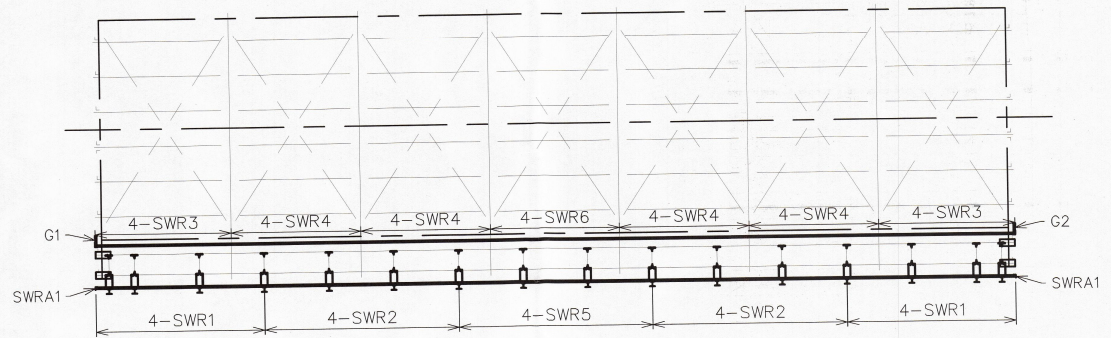
\* MIDDLE BOTTOM CHORD IS ASTM A242-50 KSI  
NOTE- ALL OTHER TRUSS MEMBERS ASTM A36, 36 KSI



TRANSVERSE SECTION

NOTE: DRAWINGS RELATIVE DO NOT SCALE

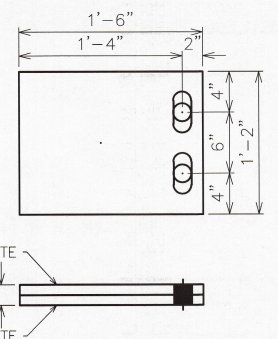
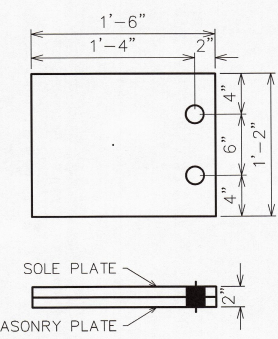
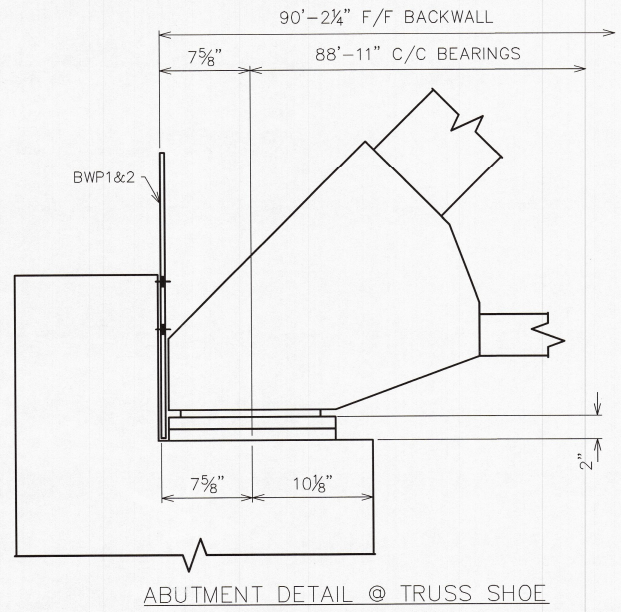
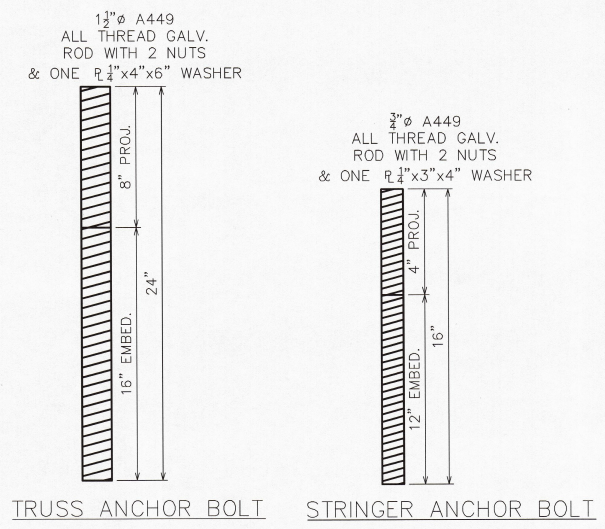
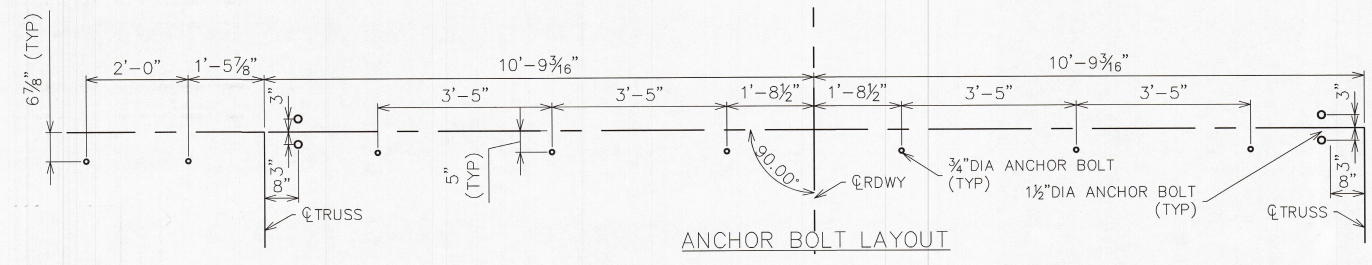
**FINAL**  
APPROVED FOR FABRICATION  
10/28/09



SIDEWALK RAIL LAYOUT

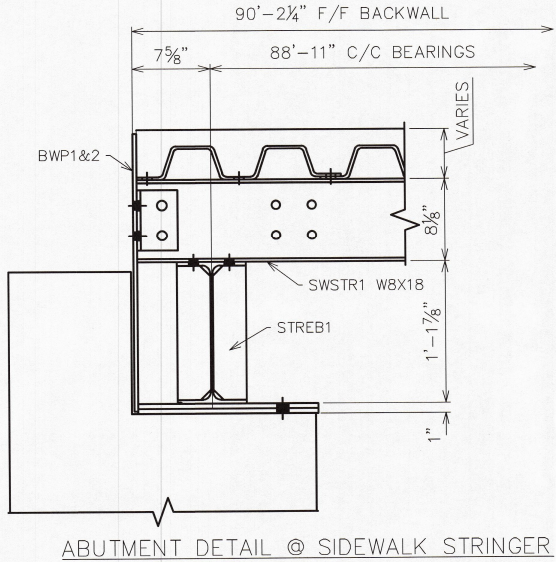
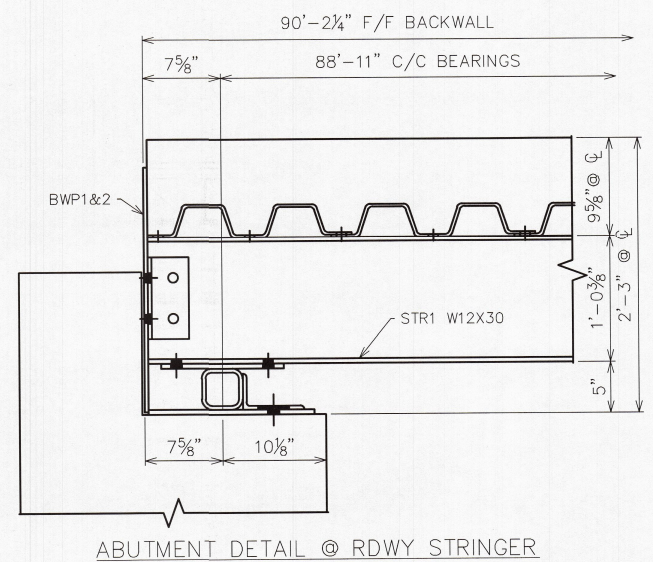
CURRENT REVISION -		CURRENT SUBMITTAL -	
FABRICATOR		GRANT STREET RAHAB	
CITY OF MINERVA CARROLL COUNTY, OHIO		SHEET NO. <b>2</b>	
DESIGN: SAF	DRAW: JEC	REVIEW: SAF	CHECK: SAF
JOB# 41971		TOTAL 11	
<b>FRAMING PLAN</b>			

DATE PLOTTED 9/2/2009



**FIXED TRUSS BEARINGS PLATES - 2 ASSY**  
**FIXED BEARINGS**  
 1 PC. - SOLE PLATE R 1"X1'-2"X1'-6" W/ 1/4" Ø HOLES  
 1 PC. - MASONRY PLATE R 1"X1'-2"X1'-6" W/ 1/4" Ø HOLES

**EXP TRUSS BEARINGS PLATES - 2 ASSY**  
**EXPANSION BEARINGS**  
 1 PC. - SOLE PLATE R 1"X1'-2"X1'-6" W/ 1/4" Ø X 4 1/2" SLOTTED HOLES  
 1 PC. - MASONRY PLATE R 1"X1'-2"X1'-6" W/ 1/4" Ø HOLES



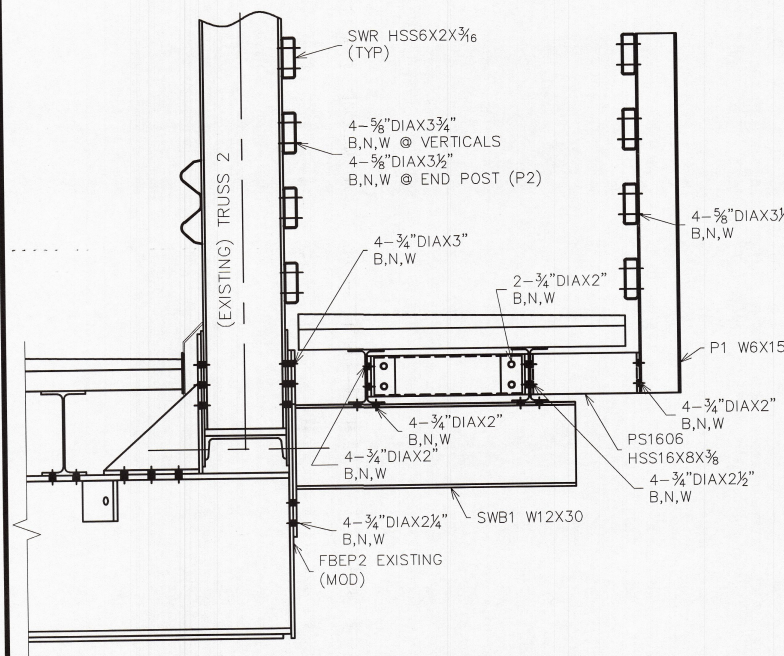
NOTE: DRAWINGS RELATIVE DO NOT SCALE

**FINAL**  
 APPROVED FOR FABRICATION  
 10/28/09

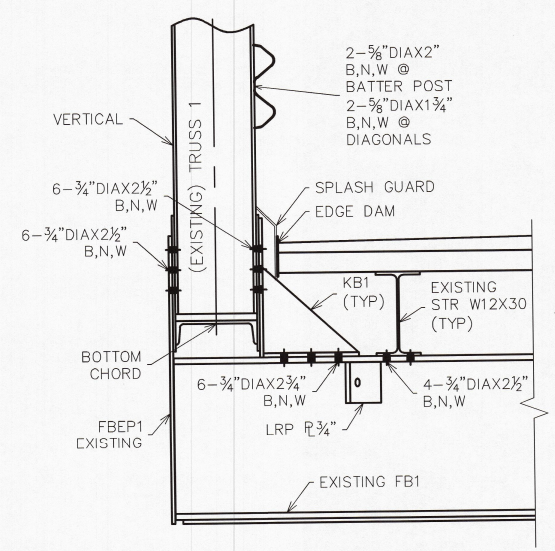
CURRENT REVISION -		CURRENT SUBMITTAL -	
FABRICATOR U.S. BRIDGE & IRON WORKS, INC.		GRANT STREET RAHAB	
CITY OF MINERVA CARROLL COUNTY, OHIO			SHEET NO. <b>3</b>
DESIGN: SAF	DRAW: JEC	REVIEW: SAF	CHECK: SAF
JOB# 41971			TOTAL 11
<b>ABUTMENT PLAN</b>			

S:\JOBS\OHIO\CARROLL\41971-Village of Minerva-Grant St.Rehab\Drawings\41971.dwg

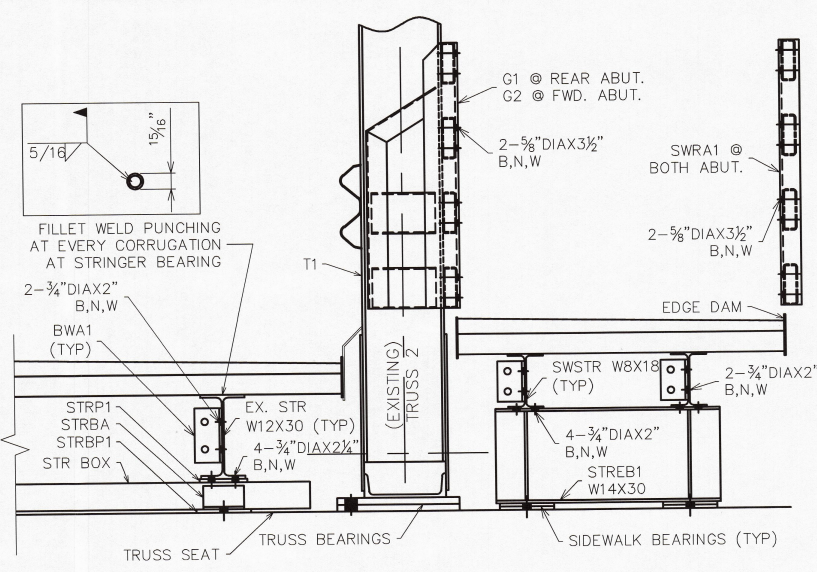
DATE PLOTTED 9/2/2009



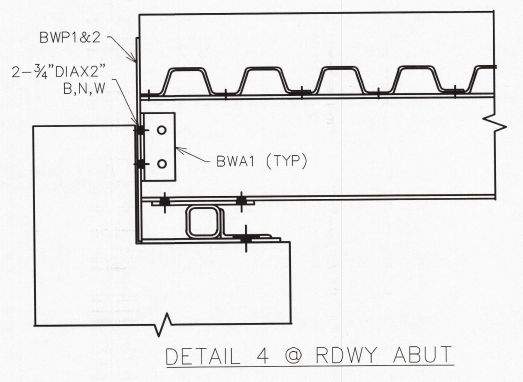
DETAIL 1  
@ SIDEWALK BRACKET CONNECTION



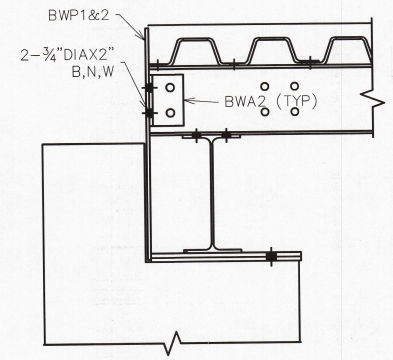
DETAIL 2  
@ FLOOR BEAM



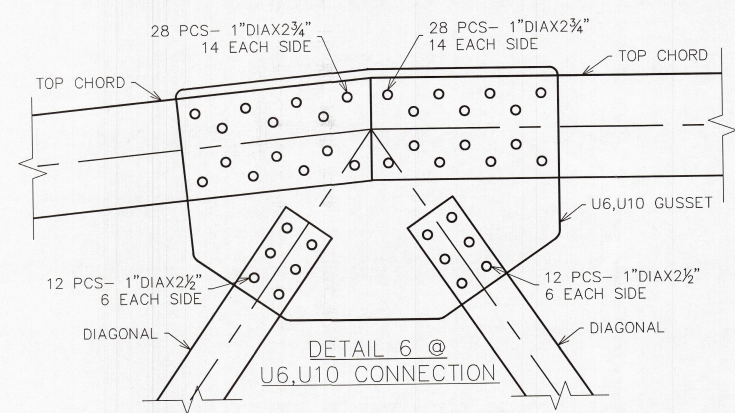
DETAIL 3  
@ ABUTMENT



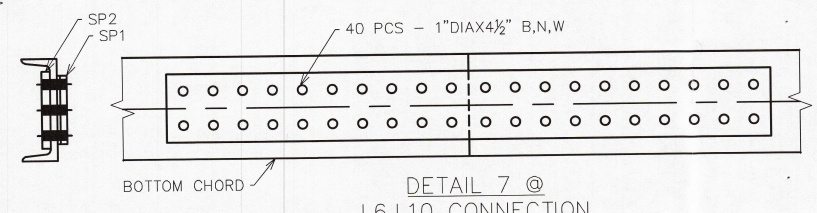
DETAIL 4 @ RDWY ABUT



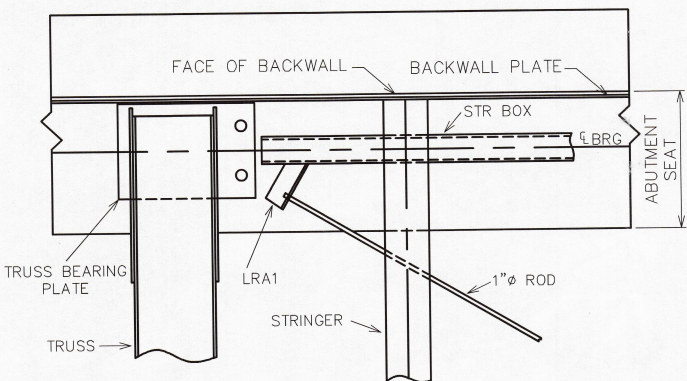
DETAIL 4 @ SIDEWALK ABUT



DETAIL 6 @  
U6,U10 CONNECTION



DETAIL 7 @  
L6,L10 CONNECTION

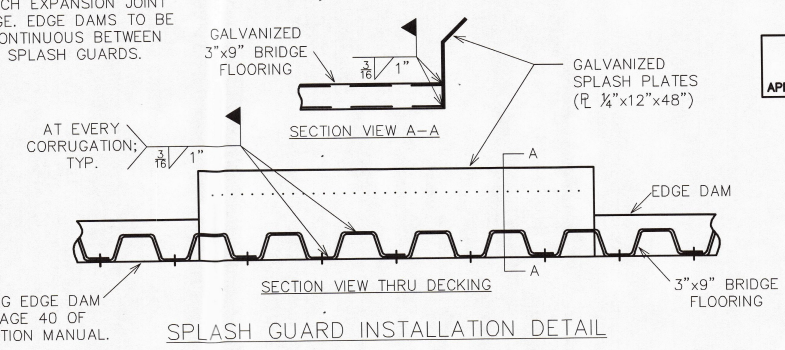


LATERAL ROD ATTACHMENT AT ABUTMENT

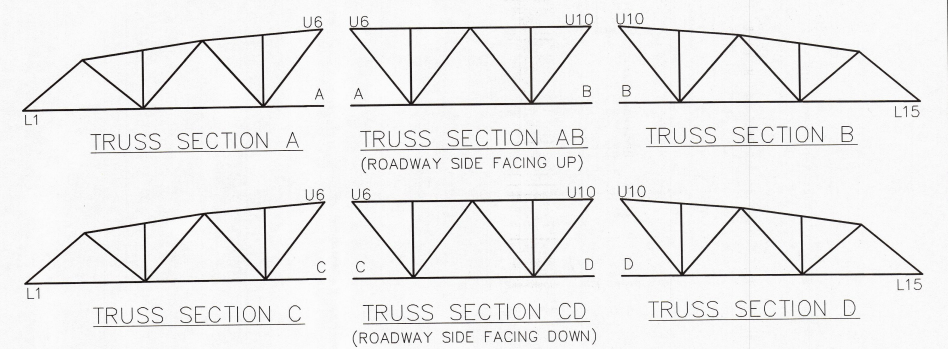
BOLT CHART FIELD ASSEMBLY		3/4" A325 TYPE 1 GALVANIZED				
LOCATION	DETAIL	2"	2 1/4"	2 1/2"	2 3/4"	3"
FB1 TO TRUSS	2			108		72
KB1 TO FB1	2					
STR TO FB1	2			144		
STR TO STRP1	3		48			
STR TO BWA1	3	24				
BWA1 TO BWP	4	24				
SWEP1 TO TRUSS	1		24			24
SWB1 TO SWSTR	1	48				
SWSTR TO DT6	1	64				
SWSTR TO STREB1	3	16				
SWSTR TO PS1606	1			64		
PS1606 TO P1	1	64				
WT6 TO D6	1	64				
SWSTR TO BWA2	3	8				
BWA2 TO BWP2	5	8				
TOTAL		320	72	316	72	24

BOLT CHART SHOP ASSEMBLY		5/8" A307 GALVANIZED RD HD (NO SHOULDERS)			
LOCATION	DETAIL	3 1/2"	3 3/4"		
P1 TO RAIL	1	256			
P2 TO RAIL	1	32			
VERTICALS TO RAIL	1		96		
RAIL TO G1/G2	3	16			
RAIL TO SWRA1	3	16			
TOTAL		320	96	0	0

SPLASH GUARD TO BE CENTERED OVER EACH FLOOR BEAM AND AT EACH EXPANSION JOINT EDGE. EDGE DAMS TO BE CONTINUOUS BETWEEN SPLASH GUARDS.



SPLASH GUARD INSTALLATION DETAIL



TRUSS MATCH MARKINGS  
NOTE - MATCH MARK LETTERS STAMPED ON BOTTOM CHORD CHANNELS & GUSSET PLATES AT CONNECTIONS WITH 1/2" LETTER STAMPS.

**FINAL**  
APPROVED FOR FABRICATION  
10/28/09

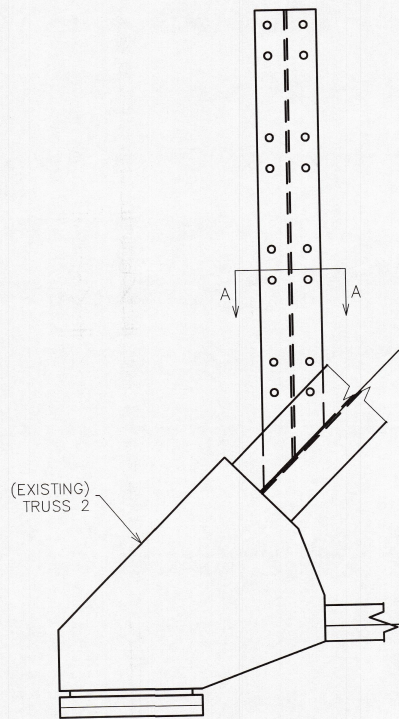
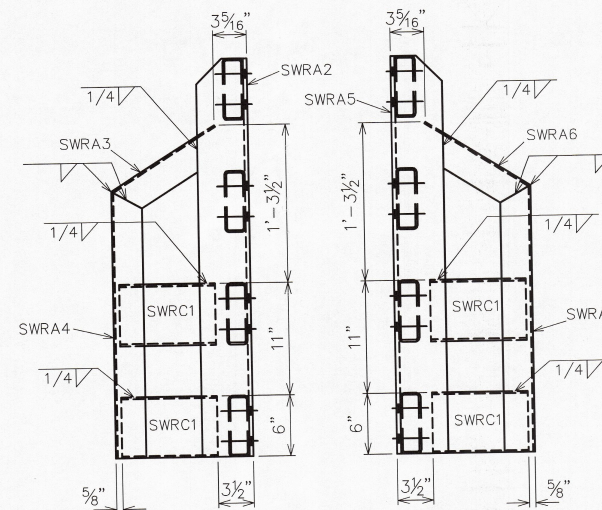
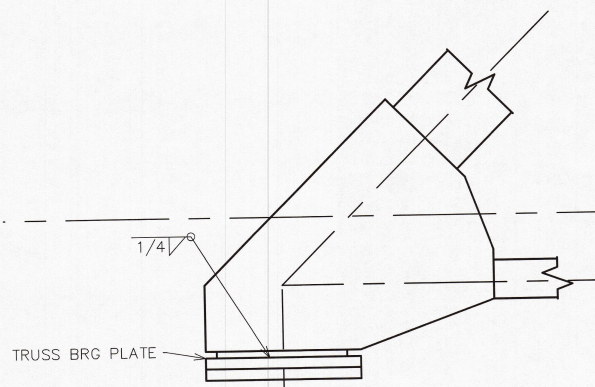
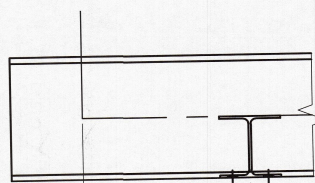
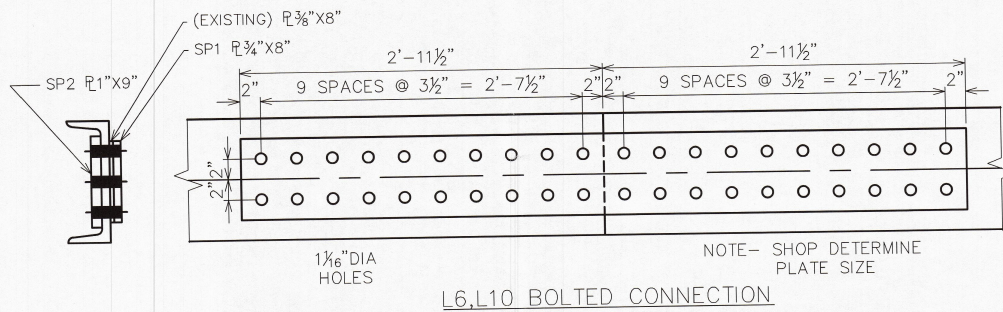
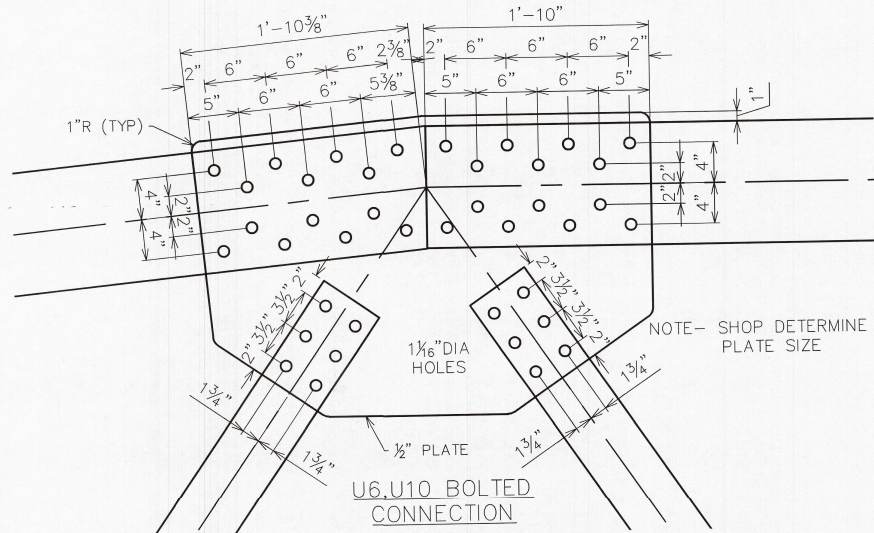
BOLT CHART FIELD ASSEMBLY		1" A325 TYPE 1 GALVANIZED		
LOCATION	DETAIL	2 1/2"	2 3/4"	4 1/2"
U6,U10 CONNECTION	6	96	224	
L6,L10 CONNECTION	7			160
TOTAL		96	224	160

NOTE: DRAWINGS RELATIVE DO NOT SCALE

CURRENT REVISION -		CURRENT SUBMITTAL -	
FABRICATOR			
U.S. BRIDGE			
GRANT STREET RAHAB			
CITY OF MINERVA CARROLL COUNTY, OHIO			
DESIGN: SAF	DRAW: JEC	REVIEW: SAF	CHECK: SAF
JOB# 41971			4
FIELD ASSEMBLY			TOTAL 11

S:\JOBS\OHIO\CARROLL\41971-Village of Minerva-Grant St.Rehab\Drawings\41971.dwg

DATE PLOTTED 9/2/2009



NOTE: ALL LEGS SHOWN FACING DOWN

**FINAL**  
 APPROVED FOR FABRICATION  
 10/28/09

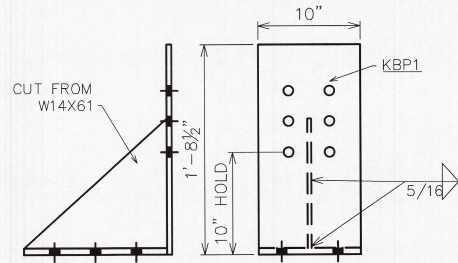
CURRENT REVISION -	CURRENT SUBMITTAL -
FABRICATOR U.S. BRIDGE	GRANT STREET RAHAB
CITY OF MINERVA CARROLL COUNTY, OHIO	SHEET NO. <b>5</b>
DESIGN: SAF DRAW: JEC REVIEW: SAF CHECK: SAF JOB# 41971	TOTAL 11
SHOP ASSEMBLY	

NOTE: DRAWINGS RELATIVE DO NOT SCALE

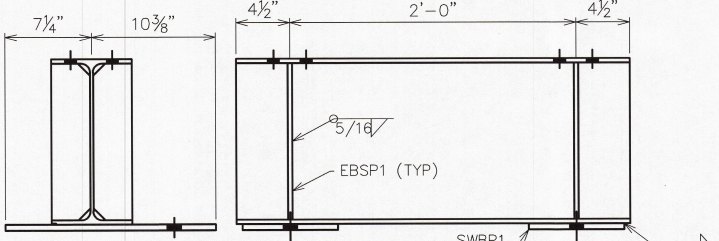
S:\JOBS\OHIO\CARROLL\41971-Village of Minerva-Grant St.Rehab.Drawings\41971.dwg

DATE PLOTTED 9/2/2009

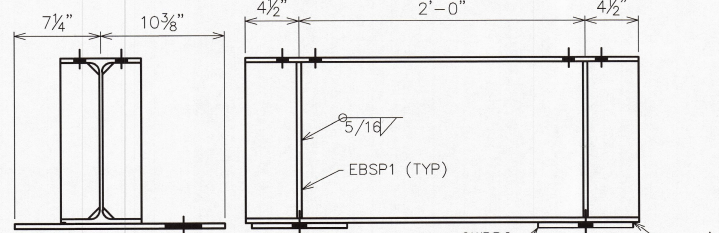
S:\JOBS\OHIO\CARROLL\41971-Village of Minerva-Grant St.Rehab\Drawings\41971.dwg



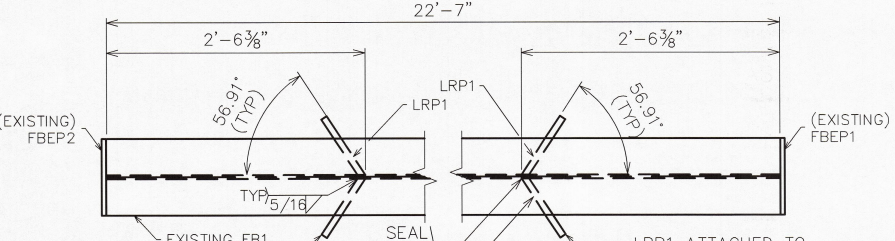
KNEE BRACE ASSEMBLY DETAIL



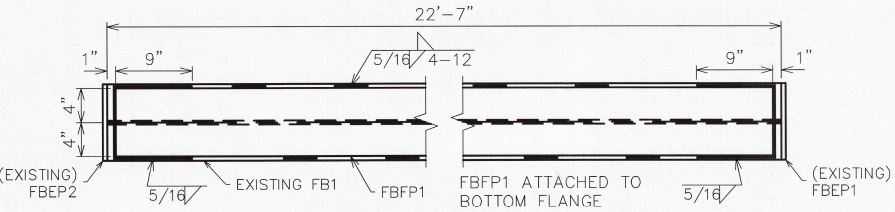
STREB1 ASSEMBLY (REAR ABUT)



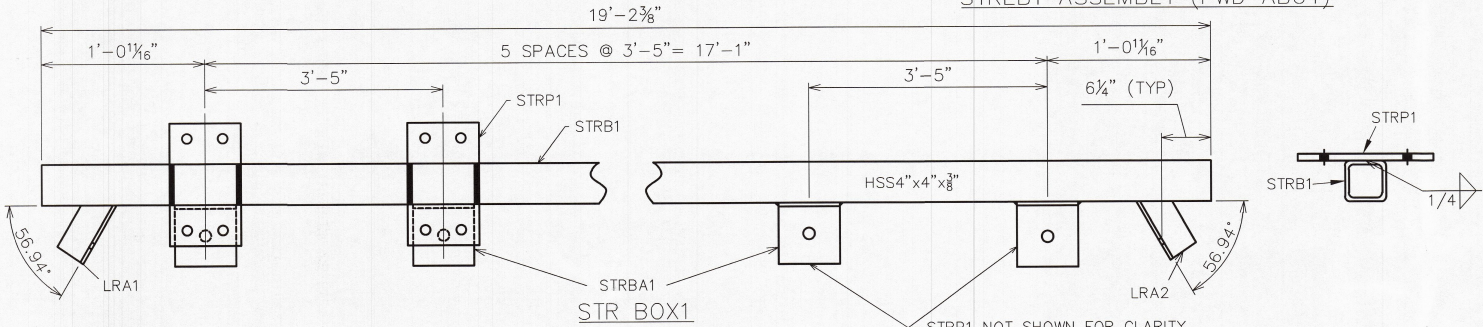
STREB1 ASSEMBLY (FWD ABUT)



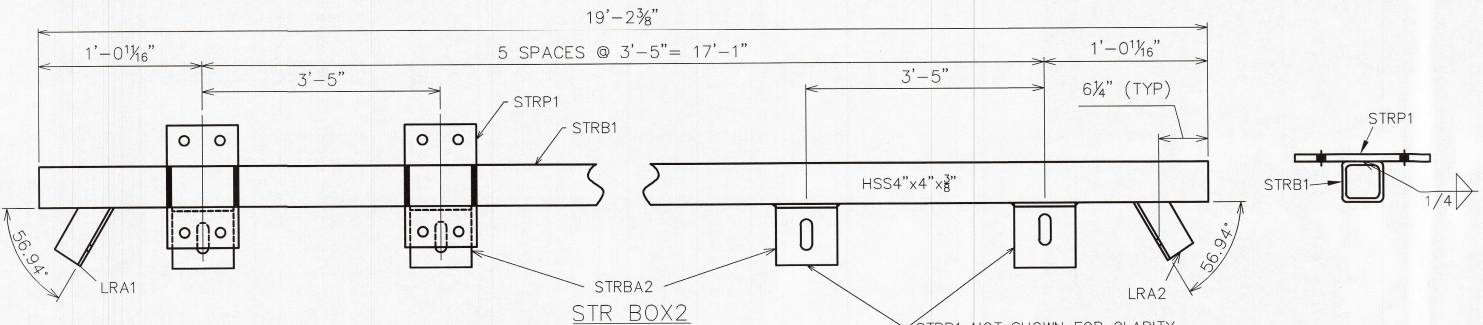
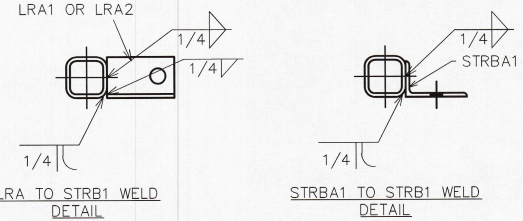
FB1 ASSEMBLY DETAIL1



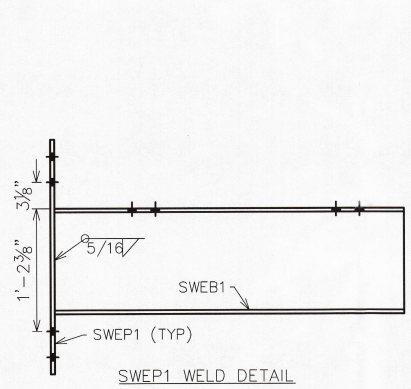
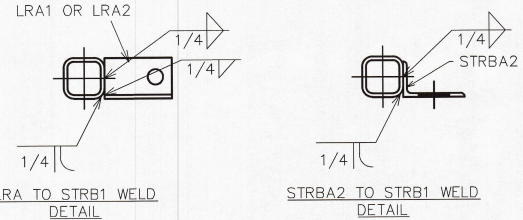
FB1 ASSEMBLY DETAIL2



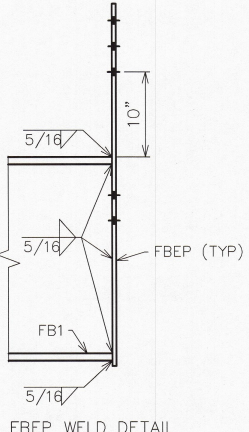
STR BOX1



STR BOX2



SWEP1 WELD DETAIL



FBEP WELD DETAIL

FINAL APPROVED FOR FABRICATION 10/28/09

CURRENT REVISION -		CURRENT SUBMITTAL -	
FABRICATOR		GRANT STREET RAHAB	
CITY OF MINERVA		SHEET NO.	
CARROLL COUNTY, OHIO		6	
DESIGN:SAF	DRAW:JEC	REVIEW:SAF	CHECK:SAF
JOB# 41971		TOTAL	
SHOP ASSEMBLY		11	

NOTE: DRAWINGS RELATIVE DO NOT SCALE

DATE PLOTTED 9/2/2009

S:\JOBS\OHIO\CARROLL\41971-Village of Minerva-Grant St.Rehab\Drawings\41971.dwg

MATERIAL SCHEDULE					
PC QTY.	PN	DESCRIPTION	MATERIAL	FINISH	WEIGHT
1	ASSY	TRUSS SECTION A (EXISTING)		GALV	
1	ASSY	TRUSS SECTION AB (EXISTING)		GALV	
1	ASSY	TRUSS SECTION B (EXISTING)		GALV	
1	ASSY	TRUSS SECTION C (EXISTING)		GALV	
1	ASSY	TRUSS SECTION CD (EXISTING)		GALV	
1	ASSY	TRUSS SECTION D (EXISTING)		GALV	
8	ASSY	U6,U10 GUSSET PL 1/2" x 2'-5 3/8" x 3'9 7/8"	A572	GALV	191#
4	ASSY	SP1 L6,L10 SPICE PLATE 1 (PLAIN) PL 3/4" x 8" x 6'-0"	A572	GALV	123#
4	ASSY	SP2 L6,L10 SPICE PLATE 2 (PLAIN) PL 1" x 9" x 6'-0"	A572	GALV	183#
6	ASSY	FB1 FLOOR BEAM 1 (EXISTING) W24x76 x 22'-7"	A36	GALV	1716#
6	PCS	FBFP1 FLOOR BEAM FLANGE PLATE 1 (PLAIN) PL 5/8" x 8" x 22'-5"	A572	GALV	374#
3	PCS	FBEP FLOOR BEAM END PLATE (EXISTING) PL 1/2" x 9" x 3'-6 1/2"	A36	GALV	54#
AS REQ'D	PCS	FBEP1 FLOOR BEAM END PLATE 1 PL 1/2" x 9" x 3'-6 1/2"	A572	GALV	54#
AS REQ'D	PCS	FBEP2 FLOOR BEAM END PLATE 2 PL 1/2" x 9" x 3'-6 1/2"	A572	GALV	54#
24	PCS	LRP1 LATERAL ROD PLATE 1 PL 3/4" x 6" x 8 5/16"	A572	GALV	11#
12	ASSY	STR1 STRINGER 1 (EXISTING) W12x30 x 13'-3 1/2"	A36	GALV	399#
24	ASSY	STR2 STRINGER 2 (EXISTING) W12x30 x 12'-8"	A36	GALV	380#
6	ASSY	STR3 STRINGER 3 (EXISTING) W12x30 x 12'-7 1/2"	A36	GALV	379#
16	ASSY	DB DIAPHRAGM 8 C6x8.2 x 1'-9 3/4"	A572	GALV	15#
32	ASSY	DT8 DIAPHRAGM TEE WT4x20 x 6"	A572	GALV	10#
12	ASSY	BWA1 BACKWALL ANGLE 1 L4x4x3/8 x 8"	A572	GALV	7#
4	ASSY	BWA2 BACKWALL ANGLE 2 L4x4x3/8 x 6"	A572	GALV	5#
2	ASSY	BWP1 BACKWALL PLATE 1 PL 3/8" x 1'-8 3/4" x 13'-8 1/2"	A572	GALV	362#
2	ASSY	BWP2 BACKWALL PLATE 2 PL 3/8" x 2'-3 1/4" x 15'-8 11/16"	A572	GALV	545#
16	ASSY	PS1608 POST SUPPORT HSS 16 x 8 x 3/8" x 6"	A500	GALV	29#
1	ASSY	G1 GATE 1 ASSEMBLY		GALV	53#
1	ASSY	G2 GATE 2 ASSEMBLY		GALV	53#
2	ASSY	SWRA1 SIDEWALK RAIL ANGLE 1 L3x3x3/16 x 3'-3"	A572	GALV	12#
1	PCS	SWRA2 SIDEWALK RAIL ANGLE 2 L5x3-1/2x5/16 x 3'-3"	A572	GALV	28#
1	PCS	SWRA3 SIDEWALK RAIL ANGLE 3 L3x3x3/16 x 1'-0"	A572	GALV	4#
1	PCS	SWRA4 SIDEWALK RAIL ANGLE 4 L3x3x3/16 x 2'-2 1/8"	A572	GALV	8#
1	PCS	SWRA5 SIDEWALK RAIL ANGLE 5 L5x3-1/2x5/16 x 3'-3"	A572	GALV	28#
1	PCS	SWRA6 SIDEWALK RAIL ANGLE 6 L3x3x3/16 x 1'-0"	A572	GALV	4#
1	PCS	SWRA7 SIDEWALK RAIL ANGLE 7 L3x3x3/16 x 2'-2 1/8"	A572	GALV	8#
4	PCS	SWRC1 SIDEWALK RAIL CHANNEL 1 C6x8.2 x 9 3/8"	A572	GALV	6#
1	ASSY	STRBOX1 STRINGER BOX ASSEMBLY 1		GALV	449#
1	ASSY	STRBOX2 STRINGER BOX ASSEMBLY 2		GALV	449#
2	PCS	LRA1 LATERAL ROD ANGLE 1 L4x4x3/8 x 6 3/4"	A572	GALV	6#
2	PCS	LRA2 LATERAL ROD ANGLE 2 L4x4x3/8 x 6 3/4"	A572	GALV	6#
6	PCS	STRBA1 STRINGER BRG ANGLE 1 L6x3-1/2x3/8 x 6"	A572	GALV	6#
6	PCS	STRBA2 STRINGER BRG ANGLE 2 L6x3-1/2x3/8 x 6"	A572	GALV	6#
2	PCS	STRB1 STRINGER BOX1 HSS 4 x 4 x 3/8" x 19'-2 3/8"	A500	GALV	332#
12	PCS	STRP1 STRINGER PLATE 1 PL 1/2" x 7" x 1'-0"	A572	GALV	12#
12	ASSY	STRBP1 STRINGER BRG PLATE 1 PL 1/2" x 8" x 1'-4 1/4"	A572	GALV	18#
12	ASSY	KB1 KNEE BRACKET		GALV	100#
12	PCS	KBB1 KNEE BRACKET BEAM W14x61 x 1'-2"	A572	GALV	71#
12	PCS	KBP1 KNEE BRACKET PLATE PL 1/2" x 10" x 1'-8 1/2"	A572	GALV	29#
6	ASSY	SWB1 SIDEWALK BRACKET 1 W12x30 x 3'-5 1/8"	A572	GALV	138#
6	PCS	SWEP1 SIDEWALK END PLATE PL 1/2" x 9" x 2'-3 1/2"	A572	GALV	35#
4	ASSY	SWSTR1 SIDEWALK STRINGER 1 W8x18 x 13'-3 1/2"	A572	GALV	239#
8	ASSY	SWSTR2 SIDEWALK STRINGER 2 W8x18 x 12'-8"	A572	GALV	228#
2	ASSY	SWSTR3 SIDEWALK STRINGER 3 W8x18 x 12'-7 1/2"	A572	GALV	227#
16	ASSY	P1 POST 1 W6x15 x 4'-4 13/16"	A572	GALV	66#
2	PCS	P2 POST 2 (SHOP DETERMINED) W6x15	A572	GALV	
8	ASSY	SWR1 SIDEWALK RAIL 1 HSS 6 x 2 x 3/16" x 16'-6 1/8"	A500	GALV	156#
8	ASSY	SWR2 SIDEWALK RAIL 2 HSS 6 x 2 x 3/16" x 19'-0 1/2"	A500	GALV	179#
8	ASSY	SWR3 SIDEWALK RAIL 3 HSS 6 x 2 x 3/16" x 13'-4"	A500	GALV	126#
16	ASSY	SWR4 SIDEWALK RAIL 4 HSS 6 x 2 x 3/16" x 12'-8 1/4"	A500	GALV	120#
4	ASSY	SWR5 SIDEWALK RAIL 5 HSS 6 x 2 x 3/16" x 19'-0"	A500	GALV	179#
4	ASSY	SWR6 SIDEWALK RAIL 6 HSS 6 x 2 x 3/16" x 12'-7 3/4"	A500	GALV	119#

NOTE: DRAWINGS RELATIVE DO NOT SCALE

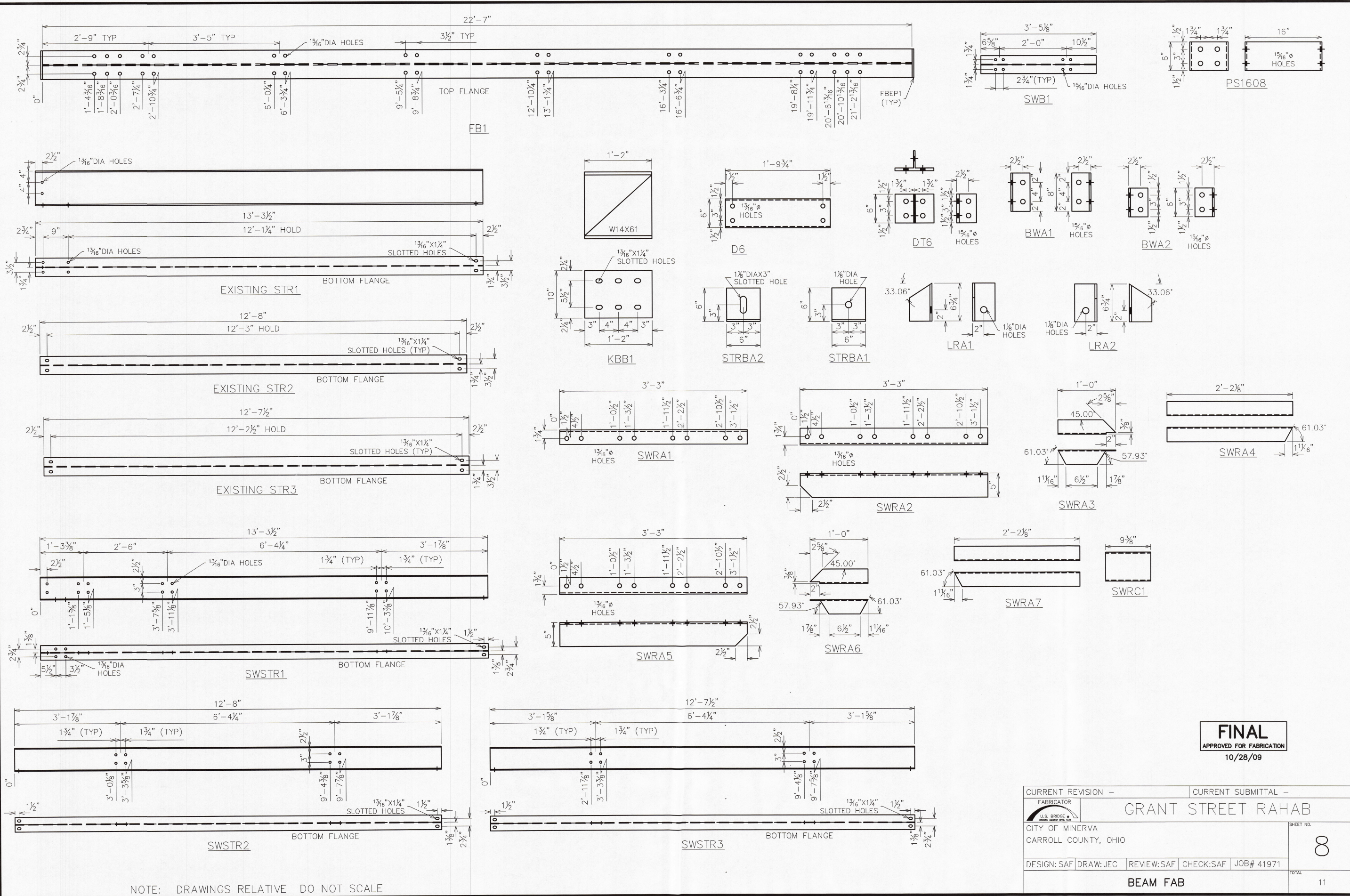
2	ASSY	STREB1	STRINGER END BEAM 1 W14x30 x 2'-9"	A572	GALV	87#
8	PCS	EBSP1	END BEAM STIFF PLATE 1 PL 3/8" x 3 1/4" x 1'-1 1/8"	A572	GALV	5#
14	ASSY	LR1	LATERAL ROD 1 1" Dia. Round Rod x 20'-0"	A1554 GR 55	GALV	54#
14	ASSY	LR2	LATERAL ROD 2 1" Dia. Round Rod x 2'-1 1/4"	A1554 GR 55	GALV	6#
14	ASSY		COUPLER 1"DIA			
2	PCS		SOLE PLATE (EXP) PL 1" x 1'-2" x 1'-6"	A572	GALV	71#
2	ASSY		MASONRY PLATE (EXP) PL 1" x 1'-2" x 1'-6"	A572	GALV	71#
2	PCS		SOLE PLATE (FIXED) PL 1" x 1'-2" x 1'-6"	A572	GALV	71#
2	ASSY		MASONRY PLATE (FIXED) PL 1" x 1'-2" x 1'-6"	A572	GALV	71#
2	PC	SWBP1	SIDEWALK BEARING PLATE 1 PL 1/2" x 8" x 1'-5 5/8"	A572	GALV	20#
4	ASSY	SWBP1	SIDEWALK BEARING PLATE 1 PL 1/2" x 8" x 1'-5 5/8"	A572	GALV	20#
2	PCS	SWBP2	SIDEWALK BEARING PLATE 2 PL 1/2" x 8" x 1'-5 5/8"	A572	GALV	20#
7	ASSY		UBOLT		GALV	
4	ASSY		GUARDRAIL A @ 12'-6"		GALV	
4	ASSY		GUARDRAIL B @ 12'-6"		GALV	
4	ASSY		GUARDRAIL C @ 12'-6"		GALV	
4	ASSY		GUARDRAIL D @ 12'-6"		GALV	
4	ASSY		WOOD POST		GALV	
4	ASSY		FLARED ENDS		GALV	
24	PCS		FLOORBEAM REPAIR PLATE A PL 3/8" x 3 1/2" x 3'-0"	A572	GALV	13#
34	PCS		FLOORBEAM REPAIR PLATE B PL 3/8" x 3 1/2" x 3'-6"	A572	GALV	16#
10	PCS		FLOORBEAM REPAIR PLATE C PL 3/8" x 3 1/2" x 5'-0"	A572	GALV	22#
6	PCS		FLOORBEAM REPAIR PLATE D PL 5/8" x 8" x 20'-0"	A572	GALV	334#
6	PCS		FLOORBEAM REPAIR PLATE E PL 5/8" x 8" x 2'-5"	A572	GALV	40#
4	ASSY		5/8"x10" B,N,W (WOOD) POST			5#
24	ASSY		5/8"x2" B,N,W (BATTER POST)	A307 Rd Hd	GALV	10#
4	ASSY		5/8"x1 3/4" B,N,W (DIAGONALS)	A307 Rd Hd	GALV	2#
144	ASSY		5/8"x1 3/4" B,N,W (SPLICE)	A307 Rd Hd	GALV	56#
320	ASSY		5/8"x3 1/2" B,N,W NO SHOULDER	A307 Rd Hd	GALV	173#
96	ASSY		5/8"x3 3/4" B,N,W NO SHOULDER	A307 Rd Hd	GALV	54#
320	ASSY		3/4"x2" B,N,W	A325	GALV	202#
72	ASSY		3/4"x2 1/4" B,N,W	A325	GALV	48#
316	ASSY		3/4"x2 1/2" B,N,W	A325	GALV	220#
72	ASSY		3/4"x2 3/4" B,N,W	A325	GALV	52#
24	ASSY		3/4"x3" B,N,W	A325	GALV	18#
96	ASSY		1"x2 1/2" B,N,W	A325	GALV	134#
224	ASSY		1"x2 3/4" B,N,W	A325	GALV	323#
160	ASSY		1"x4 1/2" B,N,W	A325	GALV	292#
8	ASSY		1 1/2"DIAx24" TRUSS ANCHOR BOLT W/2 N, 1 PLATE WASHER	A449	GALV	
16	ASSY		3/4"DIAx16" STRINGER ANCHOR BOLT W/2 N, 1 PLATE WASHER	A449	GALV	
16	ASSY		SPLASH GUARD PL 1/4" x 1'-0" x 4'-0"	A36	GALV	41#
30	ASSY		EDGE DAM PL 3/16" x 6" x 12'-0"	A36	GALV	46#
60	ASSY		5 GA 3X9 CORR. DECKING @ 20'-0"	A1011-SS-GR 50	GALV	
60	ASSY		7 GA 3X9 CORR. DECKING @ 4'-0"	A1011-SS-GR 50	GALV	

**FINAL**  
APPROVED FOR FABRICATION  
10/28/09

CURRENT REVISION -		CURRENT SUBMITTAL -	
FABRICATOR U.S. BRIDGE		GRANT STREET RAHAB	
CITY OF MINERVA CARROLL COUNTY, OHIO		SHEET NO. <b>7</b>	
DESIGN:SAF	DRAW:JEC	REVIEW:SAF	CHECK:SAF
JOB# 41971		TOTAL 11	
<b>BOM</b>			

DATE PLOTTED 9/2/2009

S:\JOBS\OHIO\CARROLL\41971-Village of Minerva-Grant St.Rehab\Drawings\41971.dwg



NOTE: DRAWINGS RELATIVE DO NOT SCALE

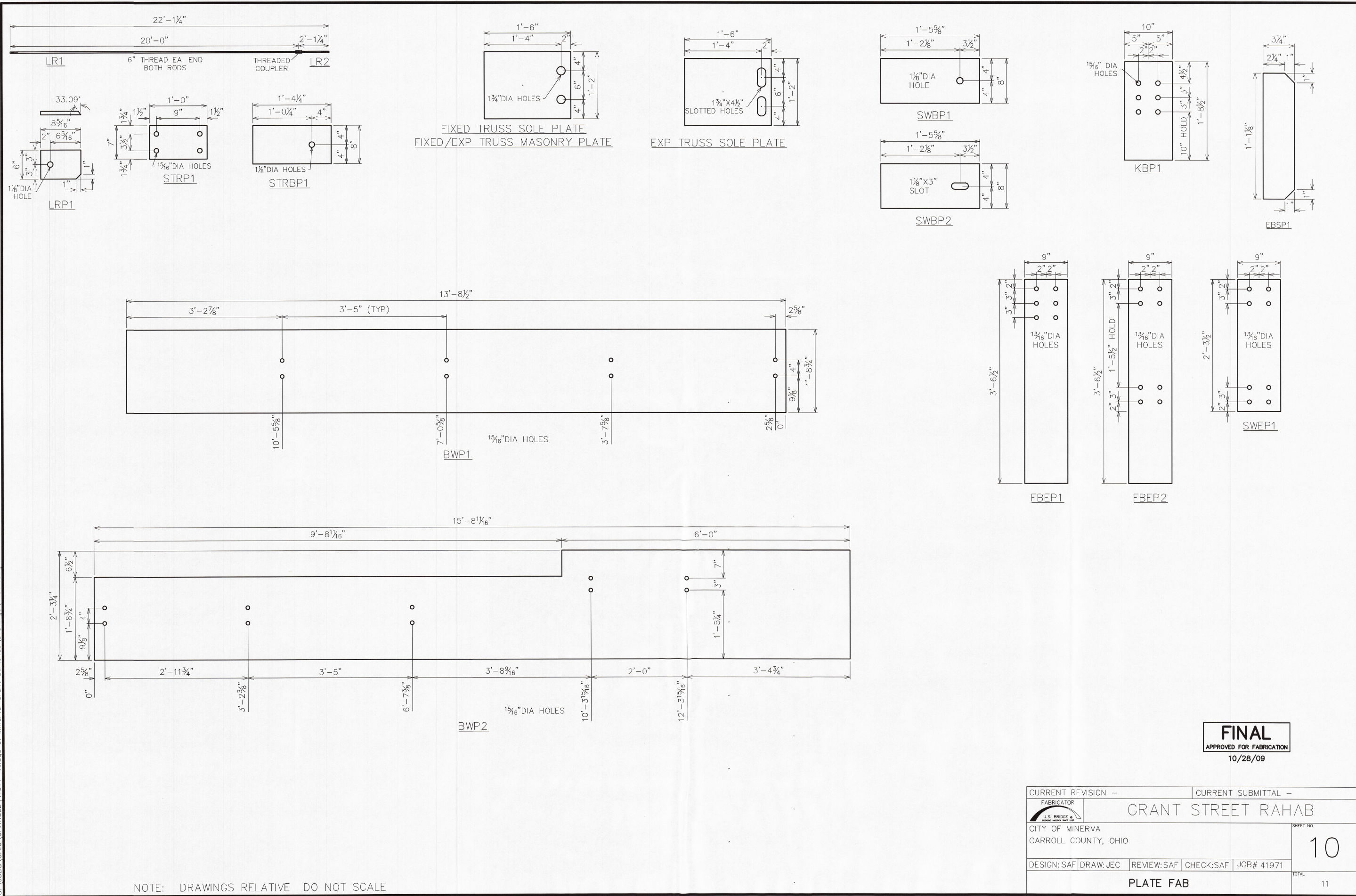
**FINAL**  
 APPROVED FOR FABRICATION  
 10/28/09

CURRENT REVISION -		CURRENT SUBMITTAL -	
FABRICATOR U.S. BRIDGE & IRON WORKS, INC.		GRANT STREET RAHAB	
CITY OF MINERVA CARROLL COUNTY, OHIO		SHEET NO. <b>8</b>	
DESIGN:SAF	DRAW:JEC	REVIEW:SAF	CHECK:SAF
JOB# 41971		TOTAL 11	
<b>BEAM FAB</b>			



DATE PLOTTED 9/2/2009

S:\JOBS\OHIO\CARROLL\41971-Village of Minerva-Grant St.Rehab\Drawings\41971.dwg



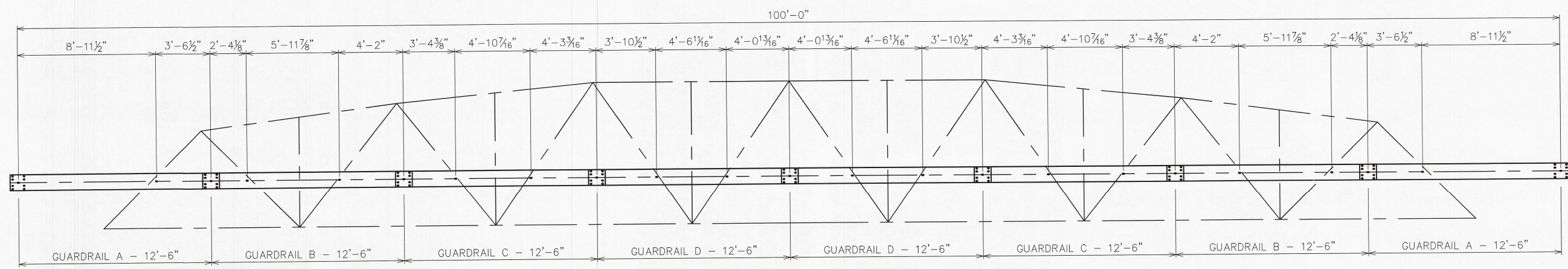
NOTE: DRAWINGS RELATIVE DO NOT SCALE

**FINAL**  
APPROVED FOR FABRICATION  
10/28/09

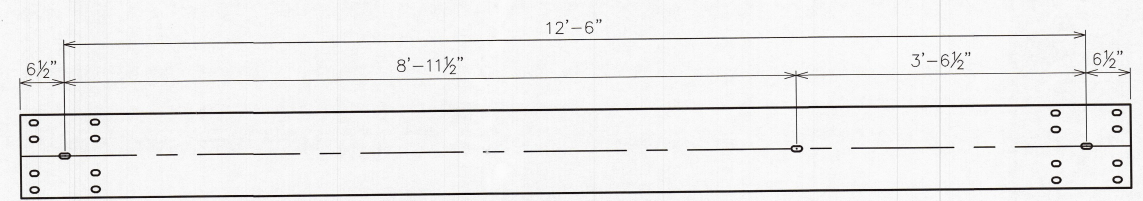
CURRENT REVISION -		CURRENT SUBMITTAL -	
FABRICATOR U.S. BRIDGE		GRANT STREET RAHAB	
CITY OF MINERVA CARROLL COUNTY, OHIO		SHEET NO. 10	
DESIGN: SAF	DRAW: JEC	REVIEW: SAF	CHECK: SAF
JOB# 41971		TOTAL 11	
PLATE FAB			

DATE PLOTTED 9/2/2009

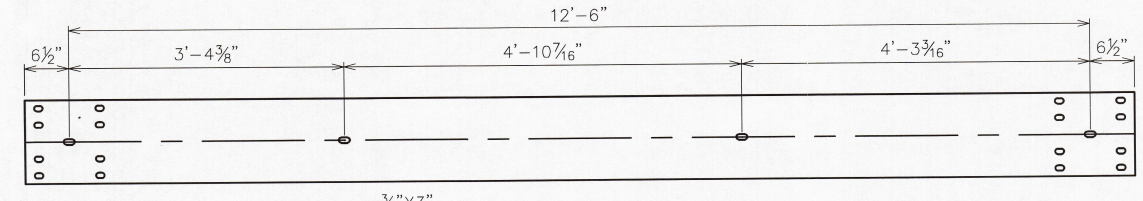
S:\JOBS\OHIO\CARROLL\41971-Village of Minerva-Grant St.Rehab\Drawings\41971.dwg



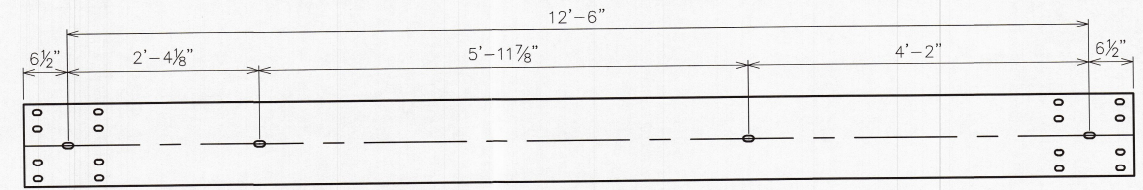
GUARDRAIL LAYOUT



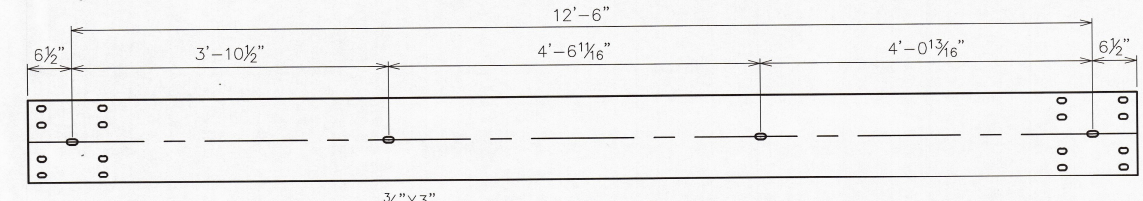
3/4" X 3" SLOT (TYP) GUARDRAIL A



3/4" X 3" SLOT (TYP) GUARDRAIL C



3/4" X 3" SLOT (TYP) GUARDRAIL B



3/4" X 3" SLOT (TYP) GUARDRAIL D

**FINAL**  
APPROVED FOR FABRICATION  
10/28/09

CURRENT REVISION -	CURRENT SUBMITTAL -
FABRICATOR U.S. BRIDGE & IRON WORKS CO. INC.	GRANT STREET RAHAB
CITY OF MINERVA CARROLL COUNTY, OHIO	SHEET NO. <b>11</b>
DESIGN: SAF   DRAW: JEC   REVIEW: SAF   CHECK: SAF   JOB# 41971	TOTAL 11
<b>GUARD RAIL LAYOUT</b>	

NOTE: DRAWINGS RELATIVE DO NOT SCALE