

G:\Akron\DCS\Projects\TRN\6054669\000\T146ES\900_CAD-QIS\Task_Orders\I-A_COL-30-18.22\03108_COL-30-18.22\Design\RW_Sheets\03108_RB001.dgn_Sheet 8/6/2018 2:36:44 PM dan.stankovic

BASIS FOR BEARINGS:

OHIO STATE PLANE COORDINATE SYSTEM,
NORTH ZONE, NAD83 (2011)

LINE TABLE

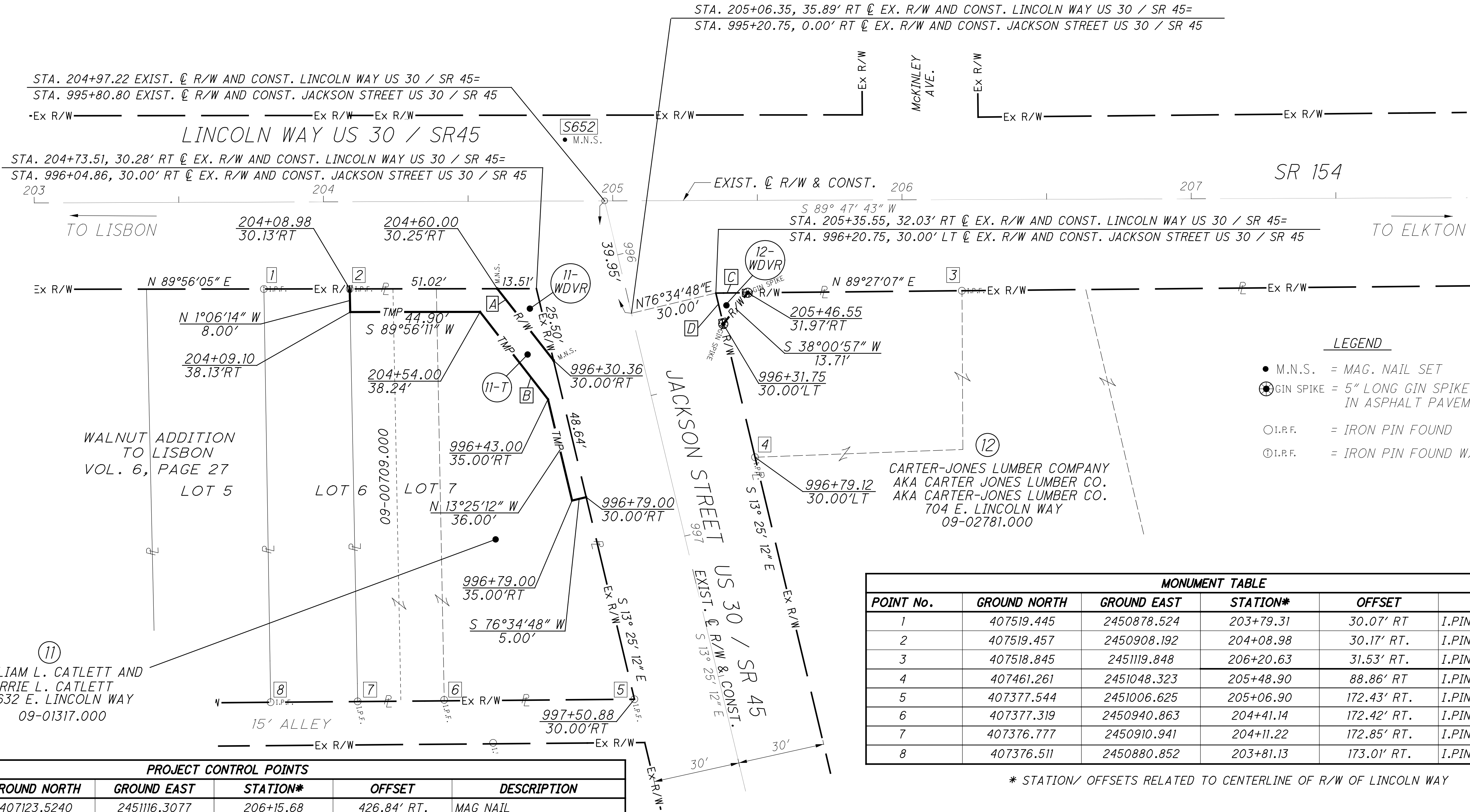
A	N 38°05'17" W	31.49'
B	N 37°49'20" W	38.28'
C	N 89°27'07" E	11.00'
D	N 13°25'12" W	11.00'

COLUMBIANA COUNTY
VILLAGE OF LISBON, CENTER TOWNSHIP
SECTION 13, T14N-R3W
CONGRESS LANDS

BASIS OF EXISTING \varnothing OF R/W:

THE EXISTING R/W WIDTH AND LOCATION WERE DETERMINED BY USING:

- THE NACE HEIRS LOTS PLAT AS RECORDED IN PLAT BOOK 2, PAGE 37
- WALNUT ADDITION TO LISBON AS RECORDED IN PLAT BOOK 6, PAGE 27
- JOHN H. HINCHLIFFE'S SECOND ADDITION AS RECORDED IN PLAT BOOK 1, PAGE 46
- SURVEY BY DALLIS DAWSON IN APRIL, 2007
- THE LOCATION OF THE EXISTING PAVEMENT



PROJECT CONTROL POINTS					
POINT NUMBER	GROUND NORTH	GROUND EAST	STATION*	OFFSET	DESCRIPTION
S650	407123.5240	2451116.3077	206+15.68	426.84' RT.	MAG NAIL
S651	407377.5440	2451006.6254	205+06.90	172.43' RT.	IRON PIN W/ ALUMINUM CAP
S652	407571.1006	2450982.5866	204+83.56	21.21' LT.	MAG SPK

* STATION/ OFFSETS RELATED TO CENTERLINE OF R/W OF LINCOLN WAY

MONUMENT TABLE					
POINT No.	GROUND NORTH	GROUND EAST	STATION*	OFFSET	DESCRIPTION
1	407519.445	2450878.524	203+79.31	30.07' RT	I.PIN "NICHELSON"
2	407519.457	2450908.192	204+08.98	30.17' RT.	I.PIN "NICHELSON"
3	407518.845	2451119.848	206+20.63	31.53' RT.	I.PIN
4	407461.261	2451048.323	205+48.90	88.86' RT	I.PIN
5	407377.544	2451006.625	205+06.90	172.43' RT.	I.PIN
6	407377.319	2450940.863	204+41.14	172.42' RT.	I.PIN - BENT
7	407376.777	2450910.941	204+11.22	172.85' RT.	I.PIN
8	407376.511	2450880.852	203+81.13	173.01' RT.	I.PIN - BENT

* STATION/ OFFSETS RELATED TO CENTERLINE OF R/W OF LINCOLN WAY

REV. BY	DATE	DESCRIPTION

DATE COMPLETED: AUG. 6, 2018

PID NO.

103108

R/W DESIGNER

DPP

R/W REVIEWER

DS

RIGHT OF WAY BOUNDARY SHEET

STA. 203+00.00 TO STA. 207+50.00

COL-30-18.22

5 / 5

0

0