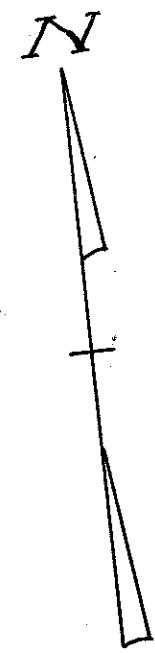


# CENTER LINE SURVEY PLAT

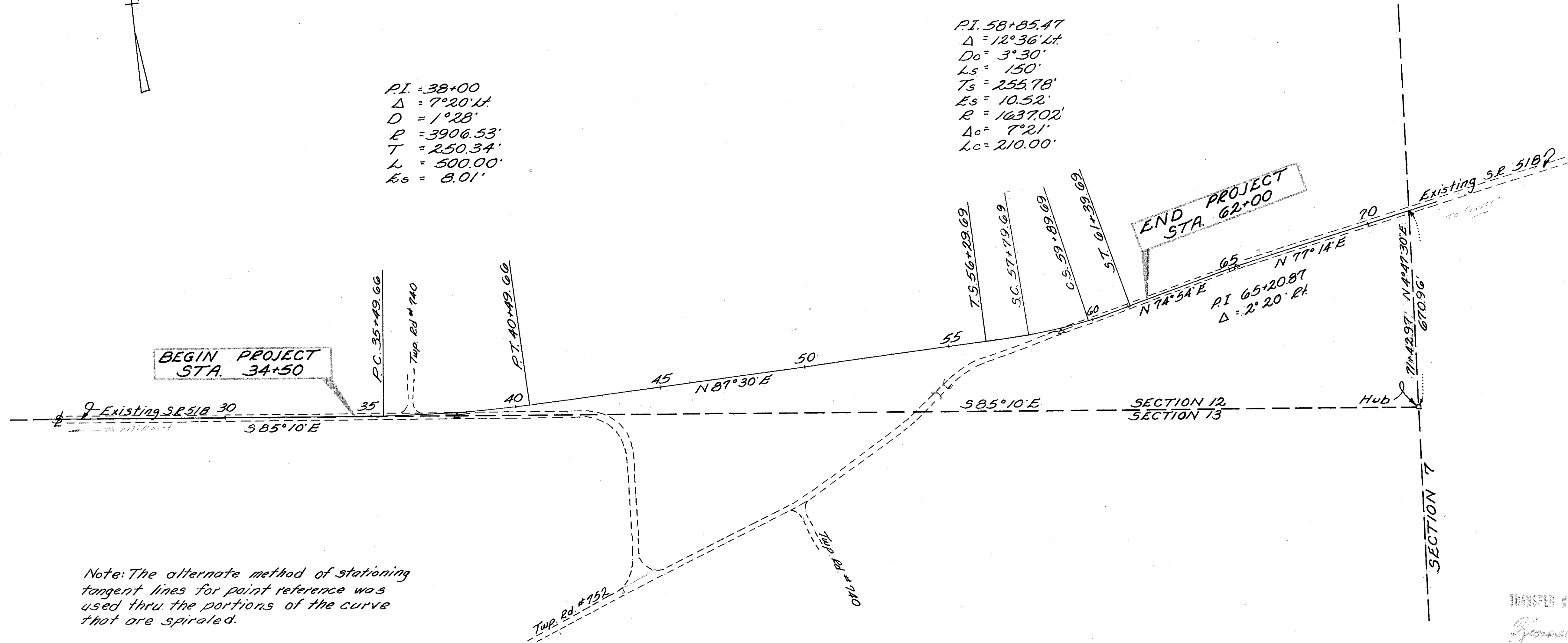
S.R. 518 SEC. 0.65  
 COLUMBIANA COUNTY, OHIO  
 FRANKLIN TWP.  
 SEC. 12 & 13 R4-W, T14-N  
 Scale: 1" = 200'

17638  
 Received for Record April 13 1967 @ 8:25 AM.  
 Recorded 4/24 1967  
 Recorded Book 88 Page 102 of the  
 Columbiana County Records  
 John P. Wargo  
 County Recorder



PI. = 38+00  
 $\Delta = 7^{\circ}20'14''$   
 $D = 1^{\circ}28'$   
 $R = 3906.53'$   
 $T = 250.34'$   
 $L = 500.00'$   
 $E_s = 8.01'$

PI. 58+85.47  
 $\Delta = 12^{\circ}36'14''$   
 $D_c = 3^{\circ}30'$   
 $L_s = 150'$   
 $T_s = 255.78'$   
 $E_s = 10.52'$   
 $R = 1037.02'$   
 $\Delta_c = 7^{\circ}21'$   
 $L_c = 210.00'$



Note: The alternate method of stationing tangent lines for point reference was used thru the portions of the curve that are spiraled.

CENTER LINE MONUMENT ASSEMBLIES WILL BE SET ON CENTER LINE DURING CONSTRUCTION AT THE FOLLOWING STATIONS.

P.O.T.	34+50
P.C.	35+49.66
PT	40+49.66
P.O.T.	45+00
P.O.T.	51+00
T.S.	56+29.69
S.C.	57+79.69
C.S.	59+89.69
S.T.	61+39.69
P.O.T.	62+00

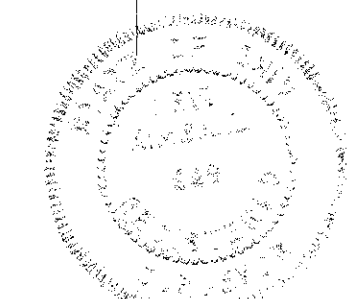
TRANSFER NOT NECESSARY  
 Kenneth Bell

Signed Carl W. Nelson  
 Division Deputy Director  
 Date: 3-16-67

I hereby certify that this plat is a true delineation of a survey made for the Ohio Department of Highways in 1966 by the State of Ohio.

Lois Kemball  
 Registered Surveyor  
 Date: 3/16/67

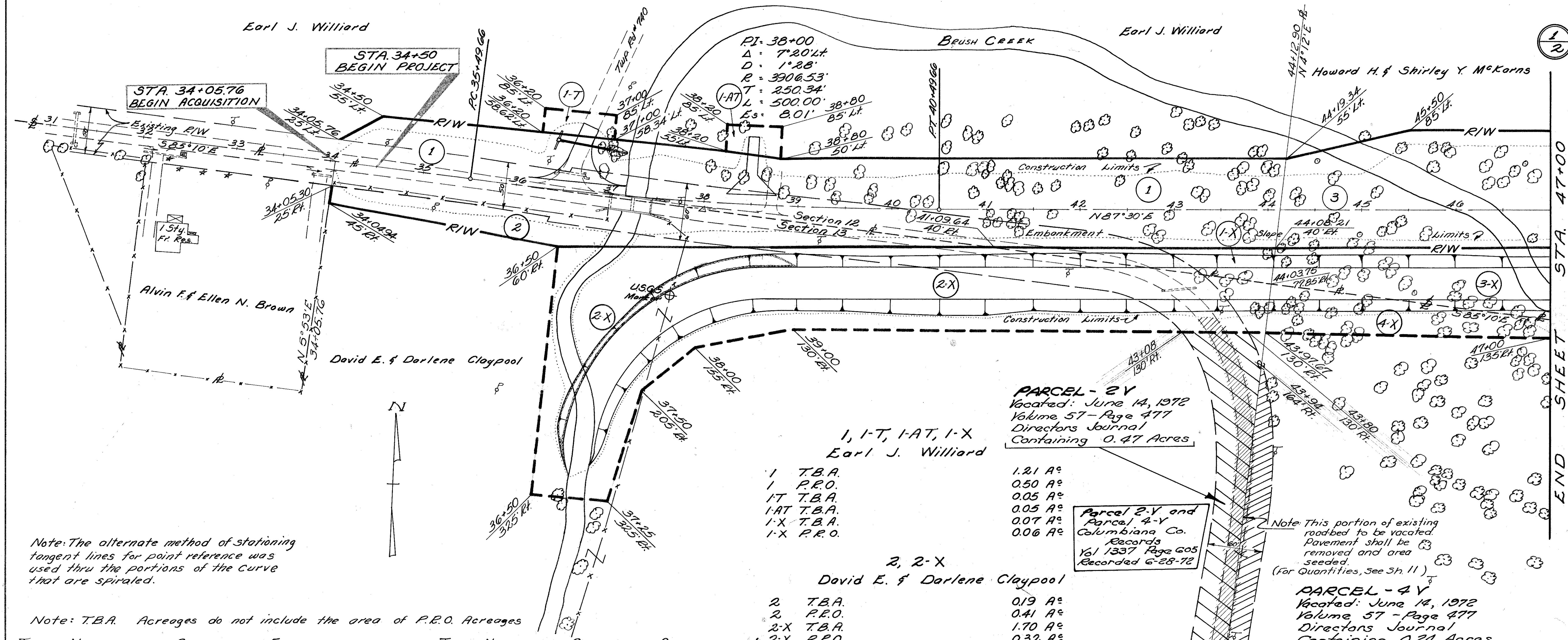
8A/102



# FRANKLIN TWP. SEC. 12 & 13 R-4-W, T-14-N

FED. RD. DIVISION	STATE	PROJECT	25 26
2	OHIO		

COL-518-0.65  
Right of Way Plans



Note: The alternate method of stationing tangent lines for point reference was used thru the portions of the curve that are spiraled.

Note: T.B.A. Acreages do not include the area of P.R.O. Acreages

TOTAL NUMBER OF OWNERS = 5

TOTAL NUMBERS OF OWNERS WITH STRUCTURES = 1

### SUMMARY OF ADDITIONAL RIGHT OF WAY REQ'D.

Parcel No	OWNERS	Deed Volume	Deed Page	Deed To Be Acquired Area	To Be Acquired Bldgs.	Residue Left	Residue Right	Sheet No	REMARKS	Type Funds
1	Earl J. Williard	233	152	197.745 A <sup>2</sup>	1.21 A <sup>2</sup> No	194.97 A <sup>2</sup>	0.13 A <sup>2</sup>	1		STATE
1-T	"				0.05 A <sup>2</sup> No			1		
1-AT	"				0.05 A <sup>2</sup> No			1		
1-X	"				0.07 A <sup>2</sup> No			1		
2	David E. & Darlene Claypool	1208	430	72.76 A <sup>2</sup>	0.19 A <sup>2</sup> No	-	72.16 A <sup>2</sup>	1		
2-X	"				1.70 A <sup>2</sup> No			1		
3	Howard H. & Shirley Y. McKarns	1154	508	80 A <sup>2</sup>	36.2 A <sup>2</sup> Yes	74.44 A <sup>2</sup>	133 A <sup>2</sup>	1 & 2	Remove 2.5 St. Frame Res.	100%
3-X	"				2.01 A <sup>2</sup> No			1 & 2		
3-Y	"				0.11 A <sup>2</sup> No			2		
3-T	"				0 A <sup>2</sup> No			2		
4-X	Frank G. & Grace M. McKarns	549	524	160.92 A <sup>2</sup>	0.27 A <sup>2</sup> No	-	160.92 A <sup>2</sup>	1 & 2		
5	Margaret Darcy	984	251	55.14 A <sup>2</sup>	0.31 A <sup>2</sup> No	40.28 A <sup>2</sup>	12.67 A <sup>2</sup>	2		

**PARCEL - 2Y**  
Vacated: June 14, 1972  
Volume 57 - Page 477  
Directors Journal  
Containing 0.47 Acres

1, 1-T, 1-AT, 1-X  
Earl J. Williard

1 T.B.A. 1.21 A<sup>2</sup>  
1 P.R.O. 0.50 A<sup>2</sup>  
1-T T.B.A. 0.05 A<sup>2</sup>  
1-AT T.B.A. 0.05 A<sup>2</sup>  
1-X T.B.A. 0.07 A<sup>2</sup>  
1-X P.R.O. 0.06 A<sup>2</sup>

**2, 2-X**  
David E. & Darlene Claypool

2 T.B.A. 0.19 A<sup>2</sup>  
2 P.R.O. 0.41 A<sup>2</sup>  
2-X T.B.A. 1.70 A<sup>2</sup>  
2-X P.R.O. 0.32 A<sup>2</sup>

**3, 3-X, 3-Y, 3-T**  
Howard H. & Shirley Y. McKarns

3 T.B.A. 3.62 A<sup>2</sup>  
3 P.R.O. 0.37 A<sup>2</sup>  
3-X T.B.A. 2.01 A<sup>2</sup>  
3-X P.R.O. 0.03 A<sup>2</sup>  
3-Y T.B.A. 0.11 A<sup>2</sup>  
3-T P.R.O. 0.06 A<sup>2</sup>

**4-X**  
Frank G. & Grace M. McKarns

4-X T.B.A. 0.27 A<sup>2</sup>

**Parcel 2-Y and Parcel 4-Y**  
Columbiana Co. Records  
Vol 1337 Page 605  
Recorded 6-28-72

**PARCEL - 4Y**  
Vacated: June 14, 1972  
Volume 57 - Page 477  
Directors Journal  
Containing 0.24 Acres

Frank G. & Grace M. McKarns

Note: This portion of existing pavement to be resurfaced. See Note and Quantities, Sheet 3

<b>COMPLETION DATE:</b> Revised: Added Parcel 2Y & 4Y	6-23-72
<b>TYPE FUNDS</b> S	



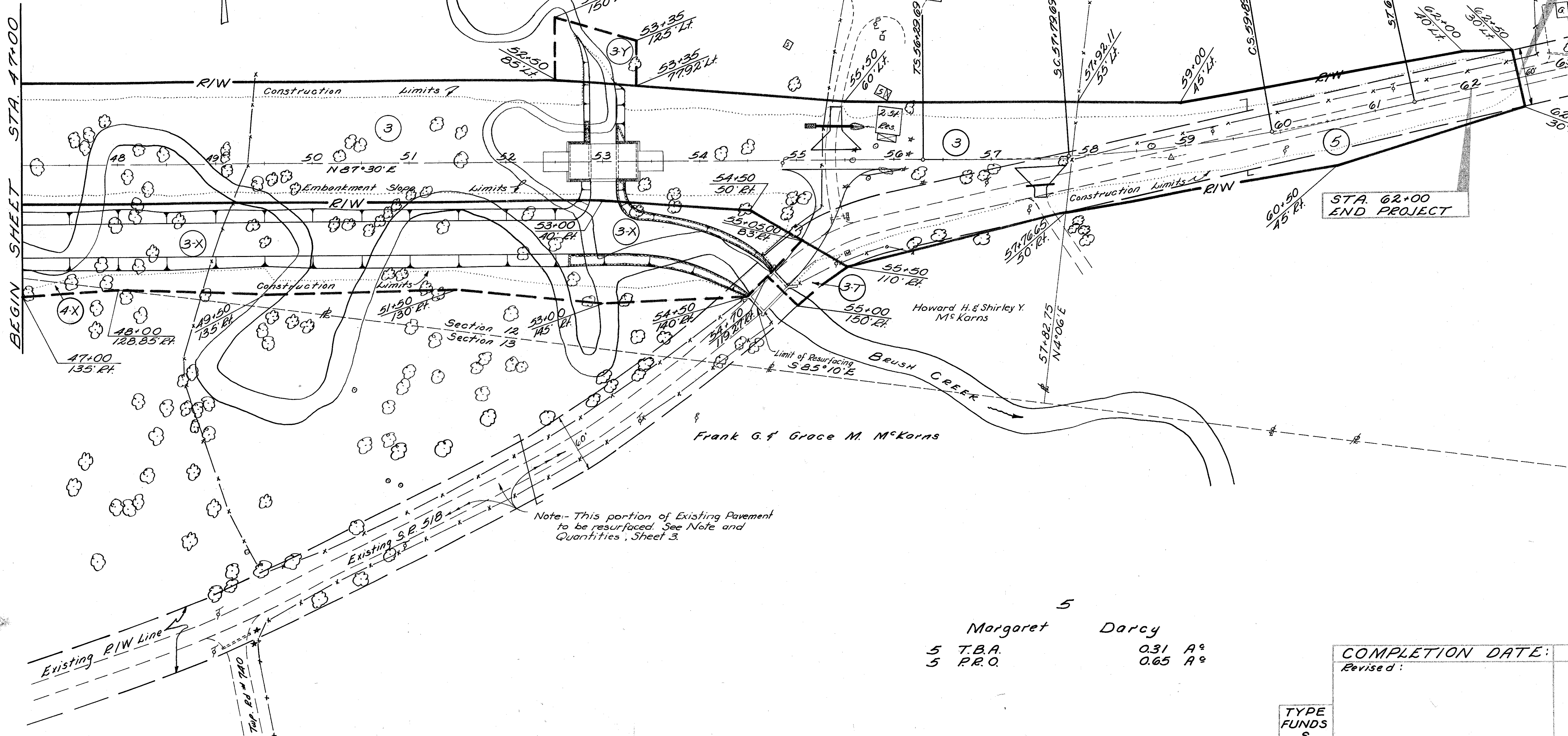
# FRANKLIN TWP. SEC. 12 & 13 R-4-W, T-14-N

FED. RD. DIVISION	STATE	PROJECT	20
2	OHIO		20
COL-518-0.65			2

P.I. 58+85.47  
 $\Delta = 12^\circ 36' \text{ Lt.}$   
 $D_c = 3^\circ 30'$   
 $L_s = 150'$   
 $T_s = 255.78'$   
 $E_s = 10.52'$   
 $R = 1637.02'$   
 $\Delta_c = 7^\circ 21'$   
 $L_c = 210.00'$

Howard H. & Shirley Y. McKarns

Margaret Darcy



Note: - This portion of Existing Pavement to be resurfaced. See Note and Quantities, Sheet 3.

5  
Margaret Darcy

5 T.B.A.	0.31 A <sup>2</sup>
5 P.R.O.	0.65 A <sup>2</sup>

COMPLETION DATE:  
Revised:

TYPE FUNDS  
5