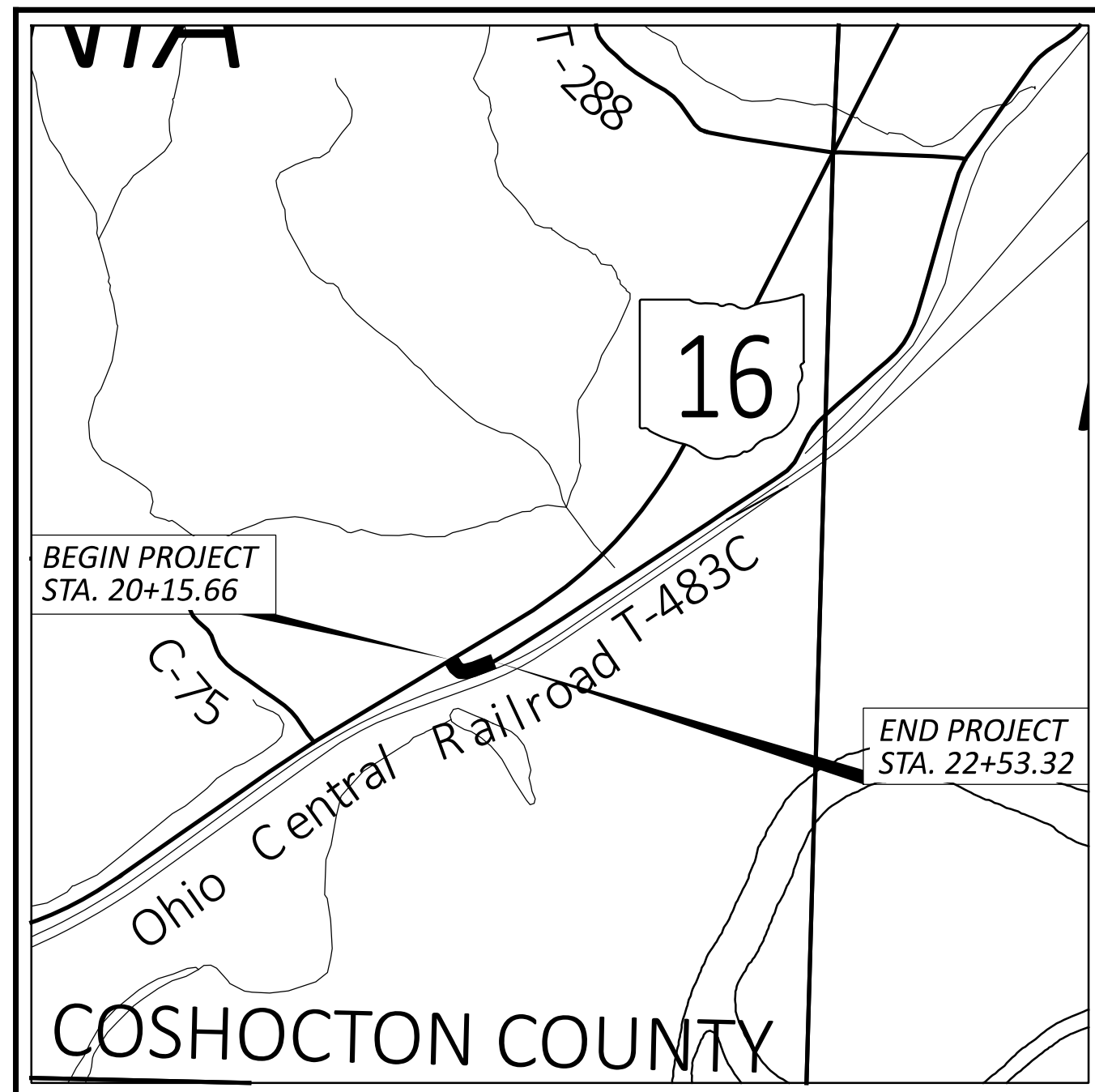


STATE OF OHIO DEPARTMENT OF TRANSPORTATION

COS-16-1.40

VIRGINIA TOWNSHIP
COSHOCOTON COUNTY



LOCATION MAP

LATITUDE: N 40°10'05" LONGITUDE: W 81°54'55"



PORTION TO BE IMPROVED	—————	=====
INTERSTATE HIGHWAY	—————	=====
FEDERAL ROUTES	—————	=====
STATE ROUTES	—————	=====
COUNTY & TOWNSHIP ROADS	—————	=====
OTHER ROADS	—————	=====

DESIGN DESIGNATION

	<u>SR-16</u>	<u>T-483C</u>
CURRENT ADT (2026)	8,100	100
DESIGN YEAR ADT (2046)	9,300	120
DESIGN HOURLY VOLUME (2046)	1,200	14
DIRECTIONAL DISTRIBUTION	54%	54%
TRUCKS (24 HOUR B&C)	9%	1%
DESIGN SPEED	60 MPH	55 MPH
LEGAL SPEED	55 MPH	55 MPH
DESIGN FUNCTIONAL CLASSIFICATION:	RURAL PRINCIPAL ARTERIAL	RURAL MINOR COLLECTOR
NHS PROJECT	YES	NO

DESIGN EXCEPTIONS

NONE

ADA DESIGN WAIVERS

NONE

UNDERGROUND UTILITIES
Contact Two Working Days
Before You Dig

OHIO811.org
Before You Dig

OHIO811, 8-1-1, or 1-800-362-2764
(Non members must be called directly)

PLAN PREPARED BY:
AECOM
277 W NATIONWIDE BLVD, SUITE 500 COLUMBUS, OHIO 43215
(614) 464-4500

INDEX OF SHEETS:

TITLE SHEET	P.1
SCHEMATIC PLAN	P.2
TYPICAL SECTIONS	P.3
GENERAL NOTES	P.4-P.5
MAINTENANCE OF TRAFFIC	P.6-P.7
GENERAL SUMMARY	P.8-P.9
SUBSUMMARY	P.10
QUANTITY CALCULATIONS	P.11
PLAN AND PROFILE - T-483C	P.12
CROSS SECTIONS - T-483C	P.13-P.16
INTERSECTION DETAIL	P.17
DRIVE DETAILS	P.18
CULVERT DETAILS	P.19-P.24
GRADING PLAN	P.25
MISCELLANEOUS DETAILS	P.26-P.27
GEOTECHNICAL PROFILE - CULVERT	P.28-P.31

FEDERAL PROJECT NUMBER

E250045

RAILROAD INVOLVEMENT

COLUMBUS & OHIO RIVER RAILROAD
OHIO CENTRAL RAILROAD

PROJECT DESCRIPTION

PROPOSED IMPROVEMENTS INCLUDE THE RECONSTRUCTION OF 0.05 MILES OF T-483C, THE INSTALLATION, VIA PILOT TUBE GUIDED AUGER BORING METHODS, OF THREE LARGE DIAMETER CULVERT PIPES UNDER THE TOWNSHIP ROAD AND RAILROAD FACILITIES, AND SITE REGRADING.

EARTH DISTURBED AREAS

PROJECT EARTH DISTURBED AREA:	0.8 ACRES
ESTIMATED CONTRACTOR EARTH DISTURBED AREA:	0.0 ACRES
NOTICE OF INTENT EARTH DISTURBED AREA:	0.8 ACRES

2023 SPECIFICATIONS

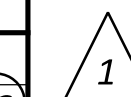
THE STANDARD SPECIFICATIONS OF THE STATE OF OHIO, DEPARTMENT OF TRANSPORTATION, INCLUDING SUPPLEMENTAL SPECIFICATIONS LISTED IN THE PLANS, CHANGES LISTED IN THE PROPOSAL, AND THE SUPPLEMENTAL SPECIFICATION 800 VERSION INDICATED ON THE PROPOSAL SHALL GOVERN THIS IMPROVEMENT.

I HEREBY APPROVE THESE PLANS AND DECLARE THAT THE MAKING OF THIS IMPROVEMENT WILL NOT REQUIRE THE CLOSING TO TRAFFIC OF THE HIGHWAY EXCEPT FOR THE SIDE ROAD AS DESCRIBED ON SHEET P.7 AND THAT PROVISIONS FOR THE MAINTENANCE AND SAFETY OF TRAFFIC WILL BE AS SET FORTH ON THE PLANS AND ESTIMATES.

Jason L. Sturgeon, P.E.
District 05 Deputy Director

Pamela Boratyn
Director, Department of Transportation

STANDARD CONSTRUCTION DRAWINGS				SUPPLEMENTAL SPECIFICATIONS		SPECIAL PROVISIONS	
BP-3.1	1/19/24	TC-41.20	10/18/13	800	1/16/26	WATERWAY	1
BP-4.1	7/19/13	TC-41.30	4/21/23	832	7/18/25	PERMIT 4/9/2026 GWI UTILIFY	
DM-4.3	1/15/16	TC-42.20	10/18/13			SPECIFICATIONS DATED 3/7/2013	
DM-4.4	1/15/16					PILOT TUBE GUIDED AUGER BORING SPECIFICATION DATED 12/01/25	
MGS-2.1	1/16/26					GEOTECHNICAL INSTRUMENTATION AND MONITORING SPECIFICATION DATED 12/01/25	
MGS-4.2	7/18/25						
MGS-4.3	7/18/25						
MT-101.60	1/17/25						
MT-105.10	1/17/20						



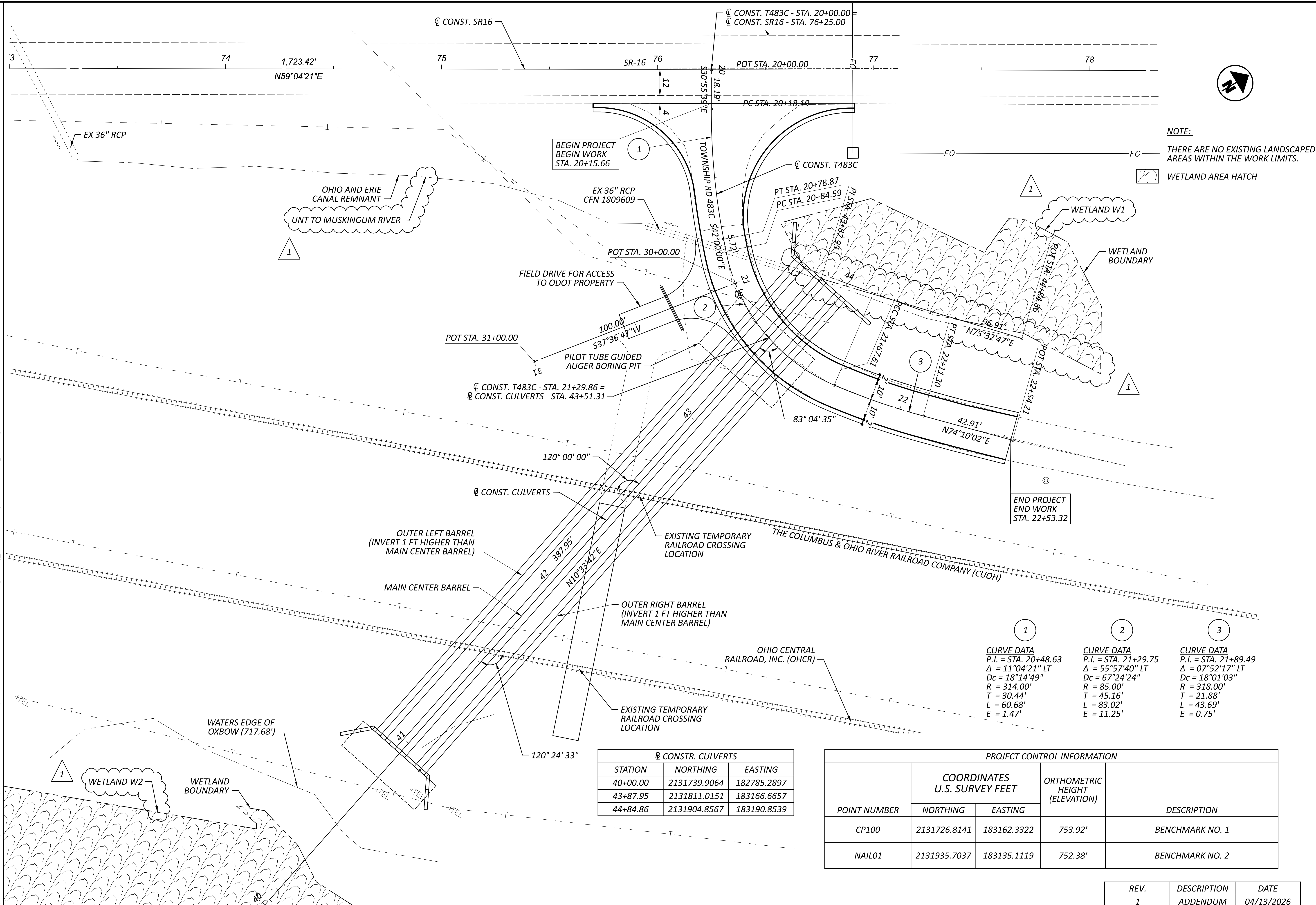
ENGINEER'S SEAL

REV.	DESCRIPTION	DATE
1	ADDENDUM	04/13/2026

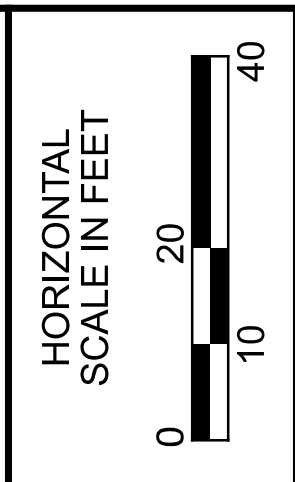
TITLE SHEET

DESIGN AGENCY	AECOM
DESIGNER	HKP
REVIEWER	AM 11-26-25
PROJECT ID	119871
SHEET TOTAL	P.1 31

COS-16-1.40
MODEL: Title Sheet PAPER SIZE: 34x22 (in.) DATE: 4/13/2026 TIME: 3:12:53 PM USER: harsaha.penuumala
pvc:\ohio\dot-pw-bentley.com\ohio\dot-pw-02\Documents\01 Active Projects\District 05\Coshocton\119871\401-Engineering_AE\COM\Roadway\Sheets\119871_GT001.dgn



NOTE:
 THERE ARE NO EXISTING LANDSCAPED AREAS WITHIN THE WORK LIMITS.
 WETLAND AREA HATCH



SCHEMATIC PLAN

1	2	3
CURVE DATA	CURVE DATA	CURVE DATA
P.I. = STA. 20+48.63	P.I. = STA. 21+29.75	P.I. = STA. 21+89.49
Δ = 11°04'21" LT	Δ = 55°57'40" LT	Δ = 07°52'17" LT
Dc = 18°14'49"	Dc = 67°24'24"	Dc = 18°01'03"
R = 314.00'	R = 85.00'	R = 318.00'
T = 30.44'	T = 45.16'	T = 21.88'
L = 60.68'	L = 83.02'	L = 43.69'
E = 1.47'	E = 11.25'	E = 0.75'

CONSTR. CULVERTS		
STATION	NORTHING	EASTING
40+00.00	2131739.9064	182785.2897
43+87.95	2131811.0151	183166.6657
44+84.86	2131904.8567	183190.8539

PROJECT CONTROL INFORMATION				
POINT NUMBER	COORDINATES U.S. SURVEY FEET		ORTHOMETRIC HEIGHT (ELEVATION)	DESCRIPTION
	NORTHING	EASTING		
CP100	2131726.8141	183162.3322	753.92'	BENCHMARK NO. 1
NAIL01	2131935.7037	183135.1119	752.38'	BENCHMARK NO. 2

REV.	DESCRIPTION	DATE
1	ADDENDUM	04/13/2026

DESIGN AGENCY
AECOM

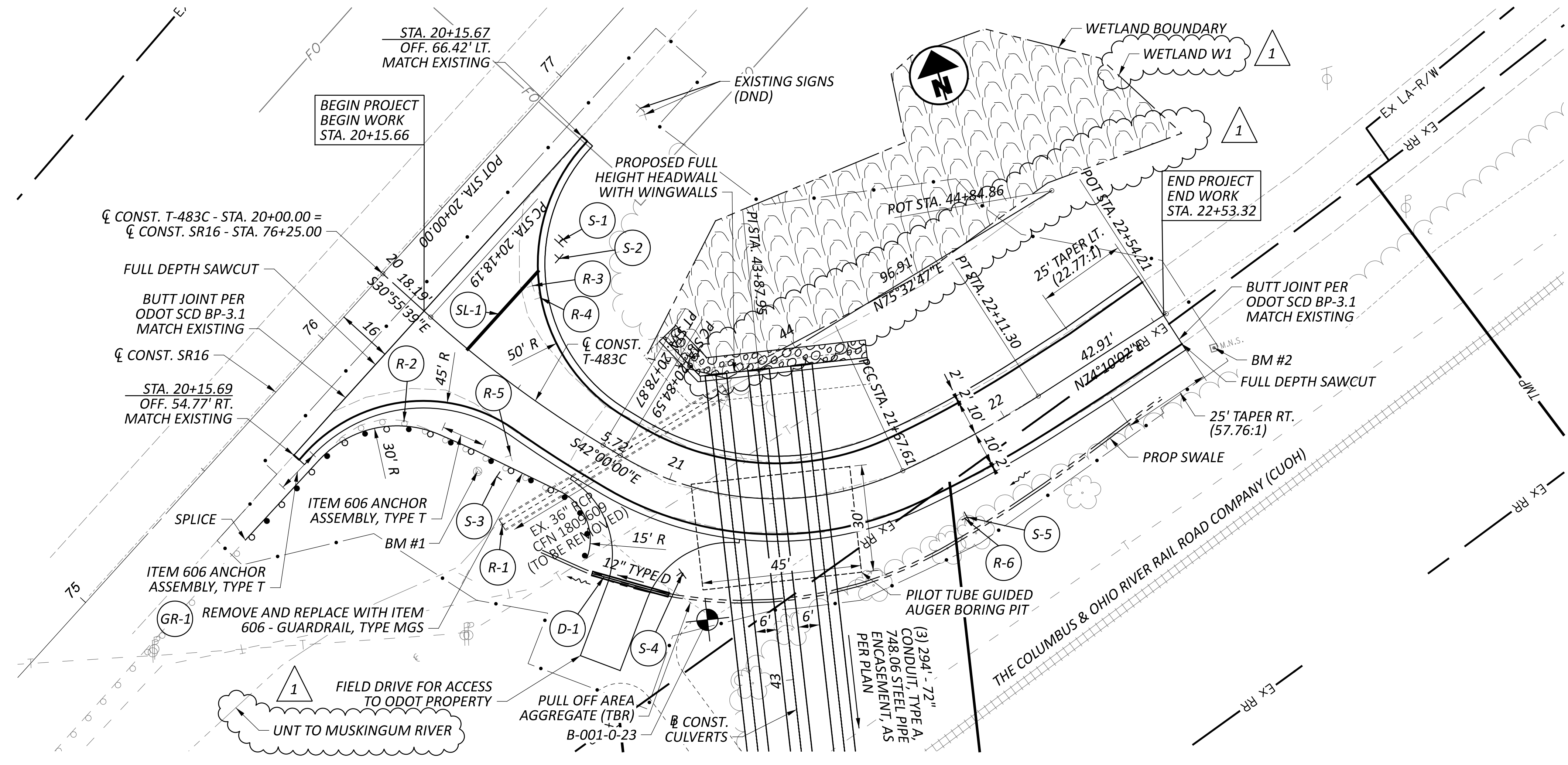
DESIGNER
HKP

REVIEWER
AM

PROJECT ID
119871

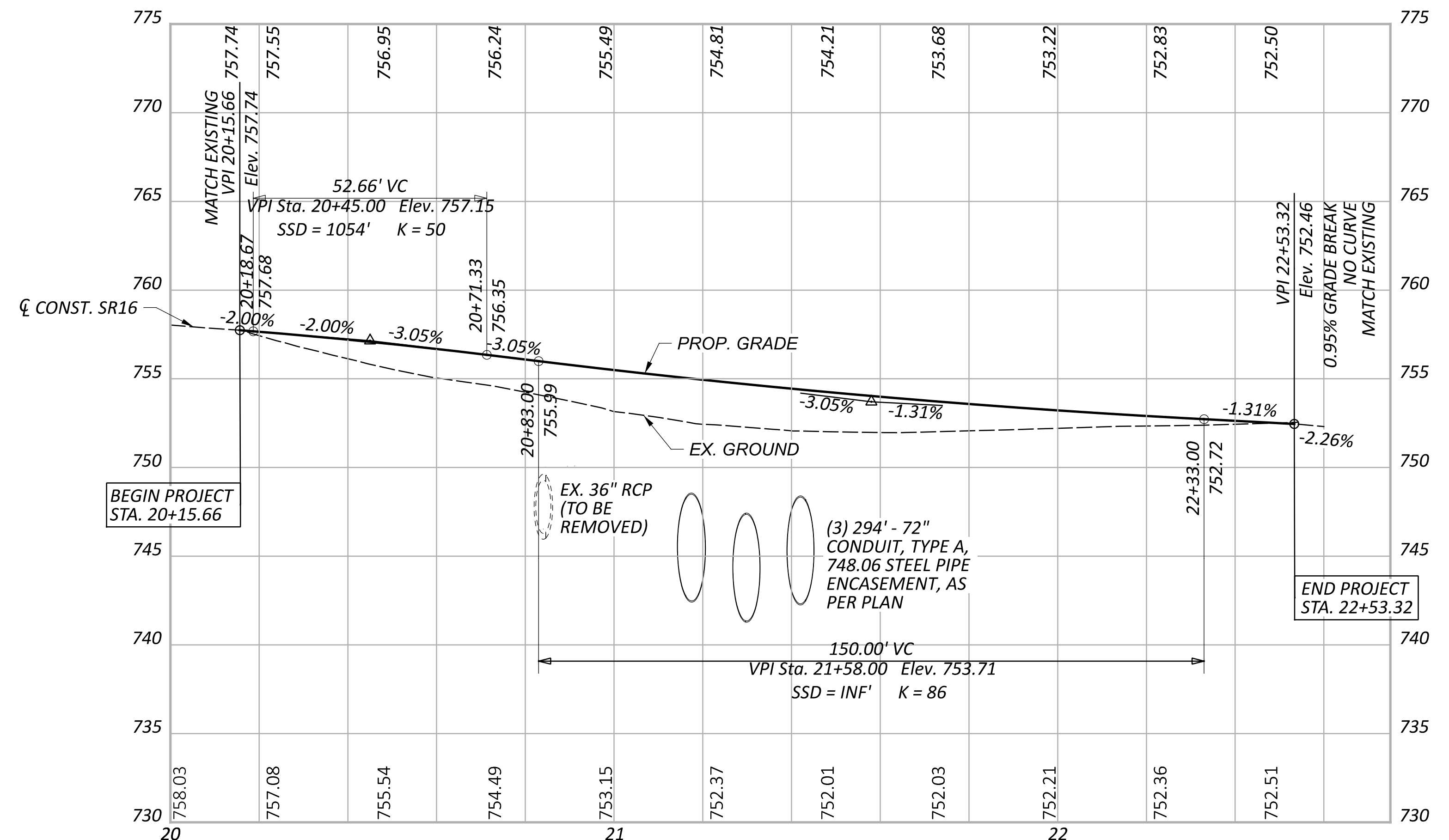
SHEET TOTAL
P.2 31

- ~~R-3~~ VIRGINIA TOWNSHIP TWP RD 483
STA. 20+34.97, 25.43' LT.
- ~~R-4~~ STOP
STA. 20+39.05, 24.12' LT.
- ~~R-5~~ 483C
STA. 20+59.05, 16.62' RT.
- ~~R-6~~ [Symbol]
STA. 21+77.21, 19.70' RT.
- S-1 VIRGINIA TOWNSHIP TWP RD 483
D3-H6b-48
STA. 20+32.89, 40.26' LT.
- S-2 STOP
R1-1-30
STA. 20+36.06, 36.10' LT.
- S-3 VIRGINIA TOWNSHIP 483C
M1-H6b-18
STA. 20+59.20, 23.74' RT.
- S-4 [Symbol]
W1-6R-48
STA. 21+09.96, 24.34' RT.
- S-5 [Symbol]
W1-8R-18
STA. 21+77.93, 19.65' RT.



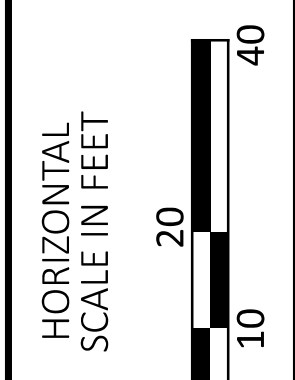
NOTES:

- FOR SUBSUMMARY, SEE SHEET P.10
- FOR ESTIMATED QUANTITIES, SEE SHEET P.11
- FOR T-483C CROSS SECTIONS, SEE SHEETS P.13-P.16.
- FOR CULVERT DETAILS, SEE SHEET P.19.
- FOR INLET/OUTLET GRADING DETAILS, SEE SHEET P.25.
- FOR INTERSECTION DETAILS, SEE SHEET P.17.



- LEGEND:**
- D- DRAINAGE ITEM
 - GR- GUARDRAIL ITEM
 - R- REMOVAL ITEM
 - SL- STOP LINE
 - S- SIGN
 - CONSTRUCTION LIMITS
 - [Hatch] WETLAND AREA HATCH

REV.	DESCRIPTION	DATE
1	ADDENDUM	04/13/2026



PLAN AND PROFILE - T-483C
BEGINNING TO ENDING

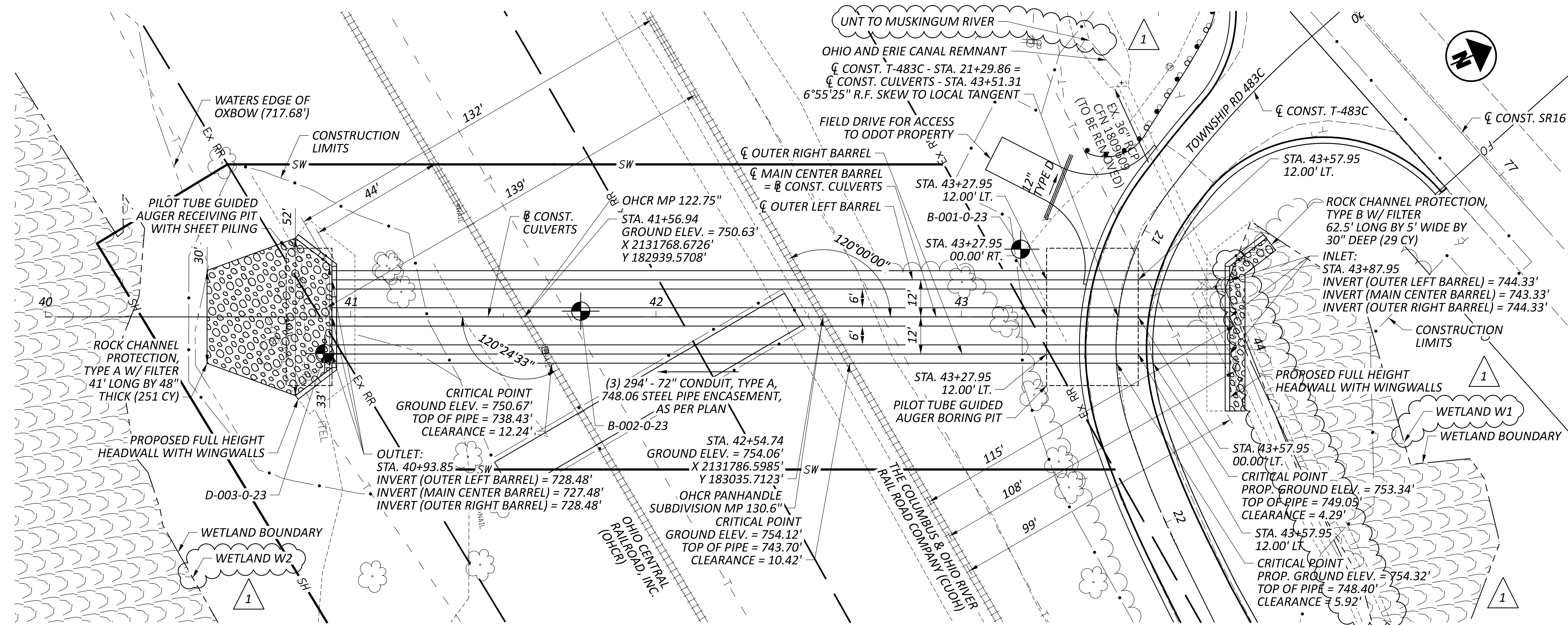
DESIGN AGENCY
AECOM

DESIGNER
HKP

REVIEWER
AM 11-26-25

PROJECT ID
119871

SHEET TOTAL
P.12 31



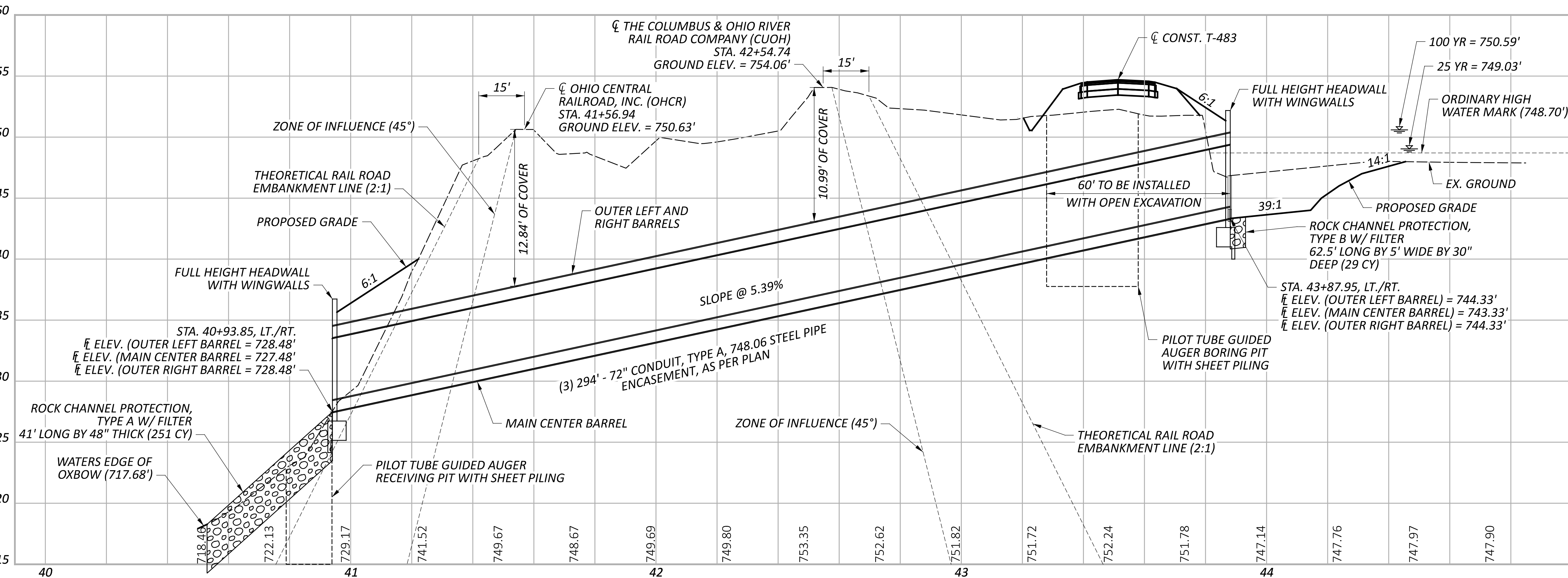
ESTIMATED QUANTITIES			
ITEM	QUANTITY	UNIT	DESCRIPTION
601	251	CY	ROCK CHANNEL PROTECTION, TYPE A WITH FILTER
601	29	CY	ROCK CHANNEL PROTECTION, TYPE B WITH FILTER
611	180	FT	72" CONDUIT, TYPE A, AS PER PLAN, 748.06
611	702	FT	PILOT TUBE GUIDED AUGER BORING, 72", TYPE A, 748.06

HYDRAULIC DATA
 DRAINAGE AREA = 1,070.73 ACRES
 Q (25) = 673.35 CFS V(25) = 12.39 FPS
 Q (100) = 1,011.41 CFS V(100) = 15.62 FPS
 ORDINARY HIGH WATER MARK: 748.70
 DESIGN SERVICE LIFE: 75 YEARS
 pH: 7.3
 ABRASION LEVEL: LEVEL 2

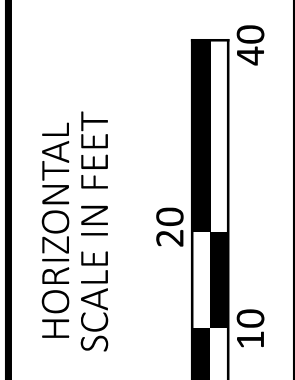
EXISTING STRUCTURE
 TYPE: 36" REINFORCED CONCRETE PIPE
 SKEW: 28° L.F.
 ALIGNMENT: CURVE
 CFN: 1809609

PROPOSED STRUCTURE
 TYPE: 72" CONDUIT, TYPE A, 748.06
 STEEL PIPE ENCASMENT, AS PER PLAN
 SKEW: 6°55'25" R.F.
 ALIGNMENT: CURVE
 WORKING FROM LEFT TO RIGHT WITH RESPECT TO SR16:
 COS-16-1.452=CFN 1994943
 COS-16-1.453=CFN 1994944
 COS-16-1.454=CFN 1994945

NOTES:
 FOR DETAILED REQUIREMENTS FOR ITEM 611E97400 - CONDUIT, MISC.: PILOT TUBE GUIDED AUGER BORING, 72", TYPE A, 748.06, SEE THE SUPPLEMENTAL SPECIFICATION WITH THE SAME TITLE IN THE CONTRACT DOCUMENTS.
 FOR ADDITIONAL DETAILS ON THE PILOT GUIDED AUGER BORING PITS AND TEMPORARY SHEETING, SEE THE INSTRUMENTATION LAYOUT SHEET P.26.



REV.	DESCRIPTION	DATE
1	ADDENDUM	04/13/2026



CULVERT DETAIL
STA. 21+29.86

DESIGN AGENCY

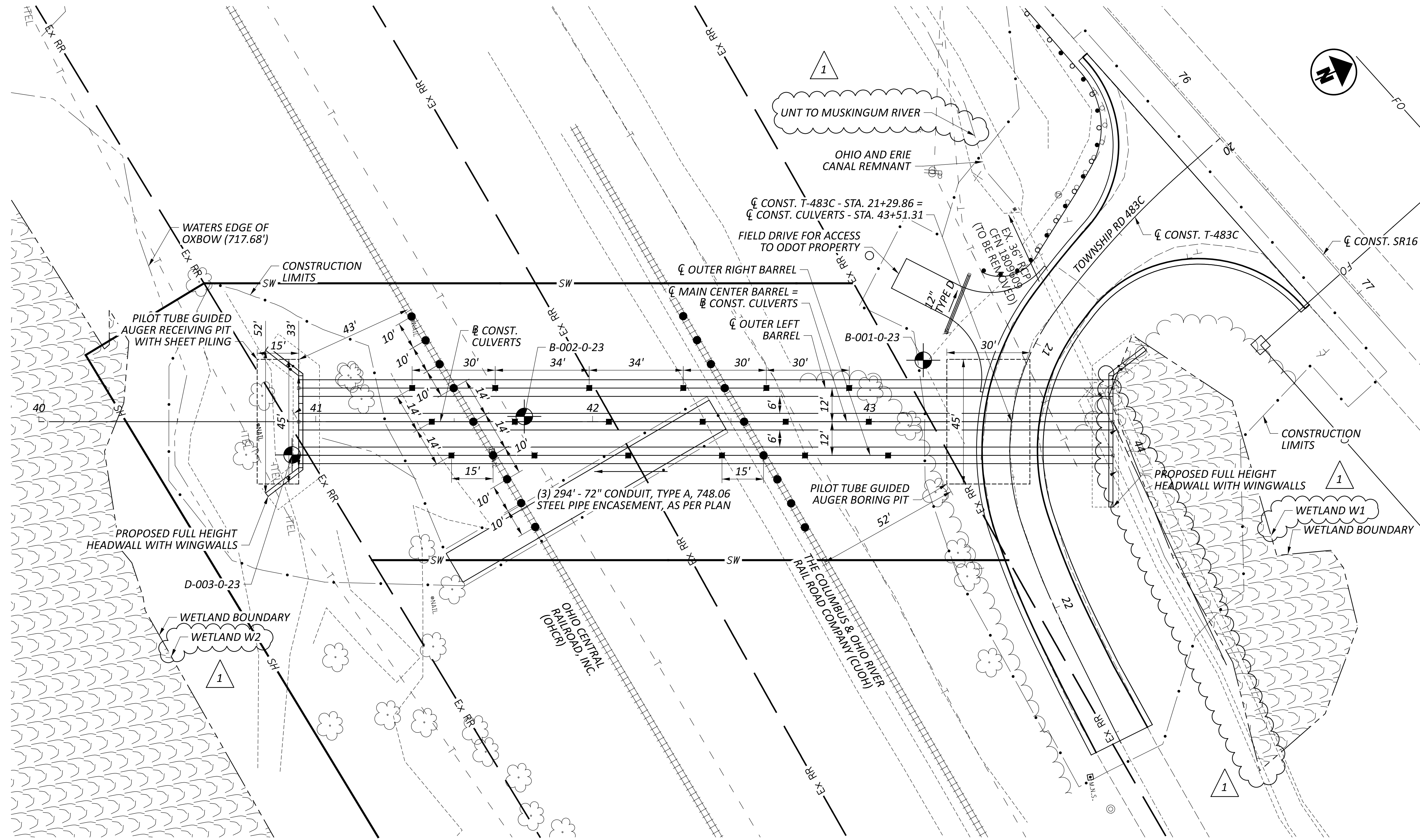
AECOM

DESIGNER
HKP

REVIEWER
AM

PROJECT ID
119871

SHEET	TOTAL
P.19	31



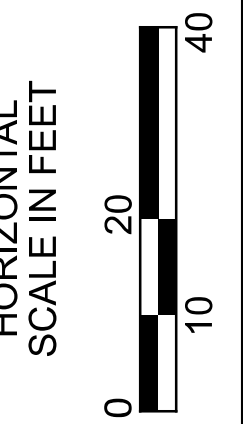
NOTES:
 FOR DETAILED REQUIREMENTS FOR ITEM 611E97300 - CONDUIT, MISC.:
 GEOTECHNICAL INSTRUMENTATION AND MONITORING, SEE THE
 SUPPLEMENTAL SPECIFICATION WITH THE SAME TITLE IN THE CONTRACT
 DOCUMENTS.

RAIL AND GROUND MONITORING POINT LOCATIONS MUST BE
 REVIEWED/APPROVED BY THE RAILROAD, PRIOR TO PERFORMING THE
 BORING ACTIVITIES.

FOR INFORMATION ONLY:
 RAIL MONITORING POINT (RMP) 18
 GROUND MONITORING POINT (GMP) 18
 AUTOMATED MOTORIZED TOTAL STATION (AMTS) 1

- LEGEND**
- RAIL MONITORING POINT (RMP)
 - GROUND MONITORING POINT (GMP)
 - AUTOMATED MOTORIZED TOTAL STATION (AMTS)

INSTRUMENTATION AND MONITORING LAYOUT DETAIL



REV.	DESCRIPTION	DATE
1	ADDENDUM	04/13/2026

DESIGN AGENCY

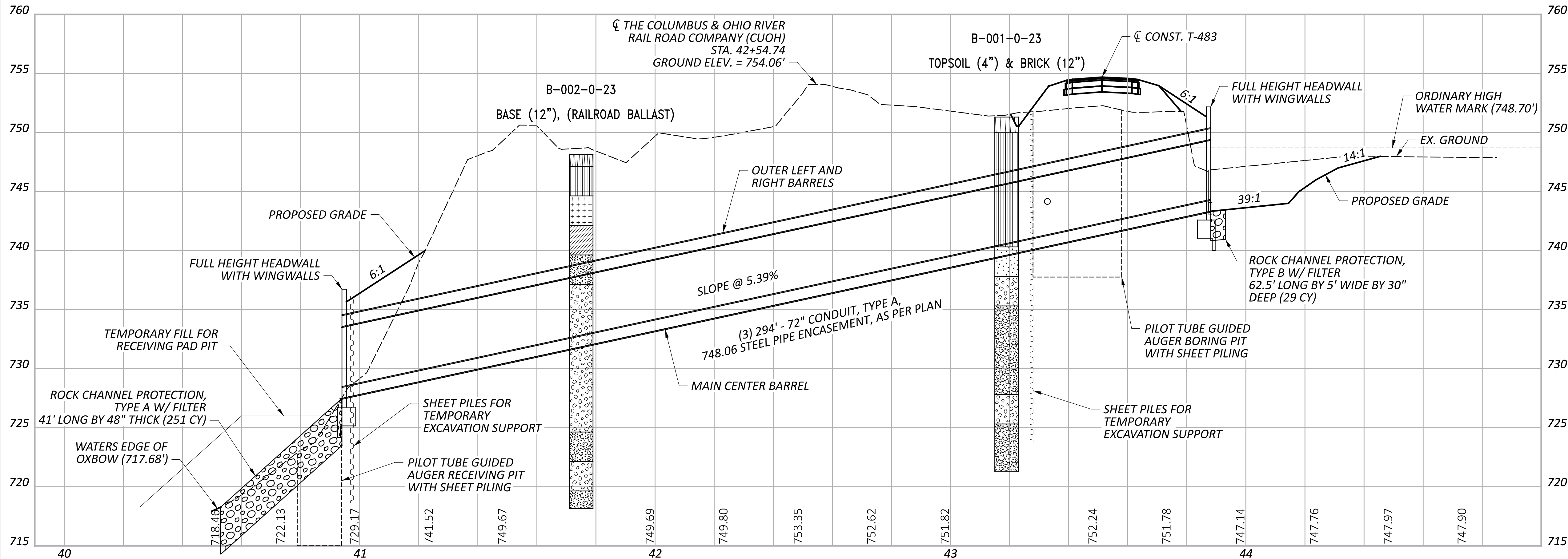
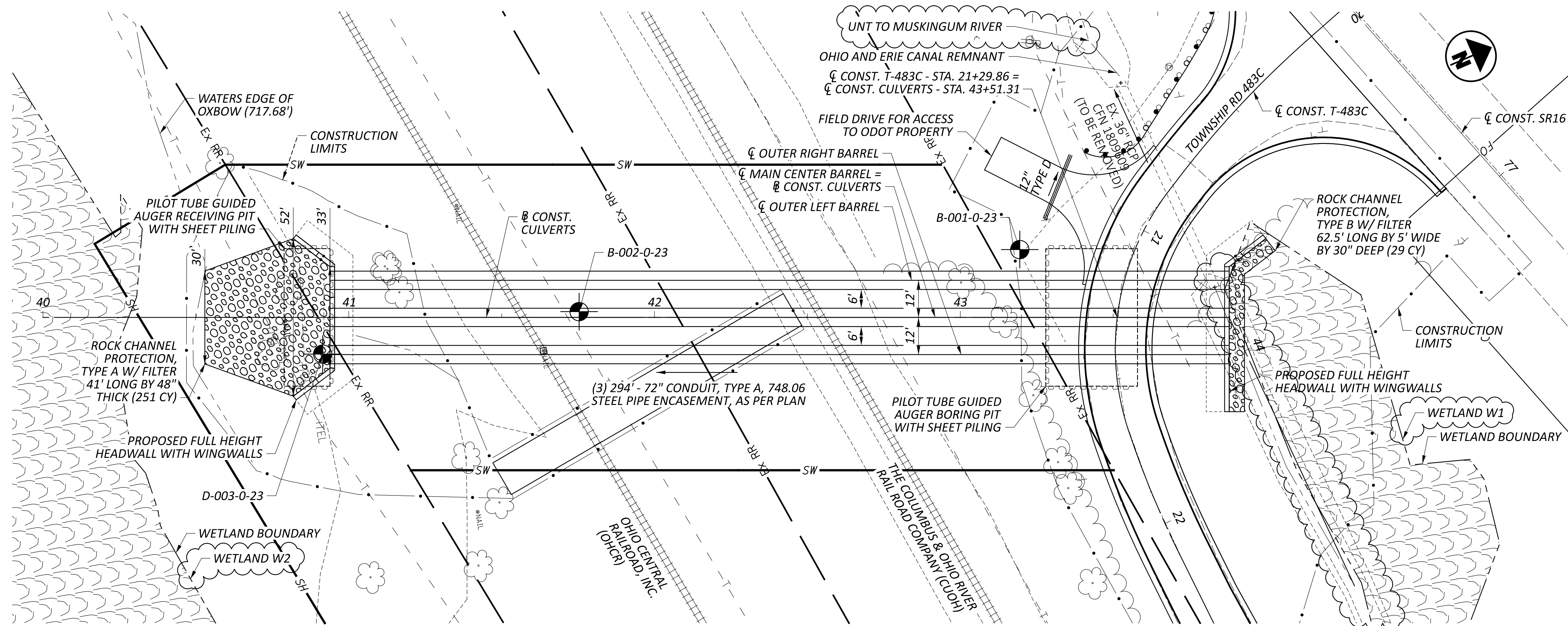
AECOM

DESIGNER
HKP

REVIEWER
AM 11-26-25

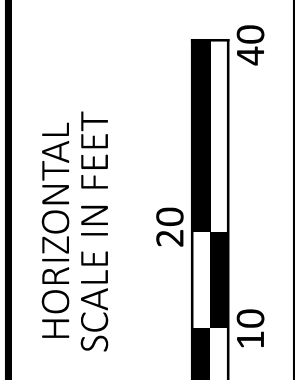
PROJECT ID
119871

SHEET TOTAL
P.26 31



- NOTES:
- SHEET PILE SUPPORT OF EXCAVATION IS ONLY PRESENTED FOR GENERAL GUIDANCE TO THE CONTRACTOR. ACTUAL SUPPORT OF EXCAVATION MATERIALS AND METHODS ARE TO BE DESIGNED BY THE CONTRACTOR. THE CONTRACTOR SHALL SUBMIT A DESIGN, SIGNED AND SEALED BY A PROFESSIONAL ENGINEER LICENSED IN THE STATE OF OHIO FOR THE SUPPORT OF EXCAVATION.
 - SOIL AND GROUNDWATER CONDITIONS TO BE USED FOR DESIGN OF EXCAVATION SUPPORT ARE PROVIDED IN THE GEOTECHNICAL DATA.
 - THE CONTRACTOR SHALL DETERMINE THE SIZE OF EXCAVATION SUPPORT SYSTEM AS REQUIRED FOR THEIR MEANS AND METHODS.

REV.	DESCRIPTION	DATE
1	ADDENDUM	04/13/2026



CULVERT DETAIL
 SOIL PROFILE

DESIGN AGENCY

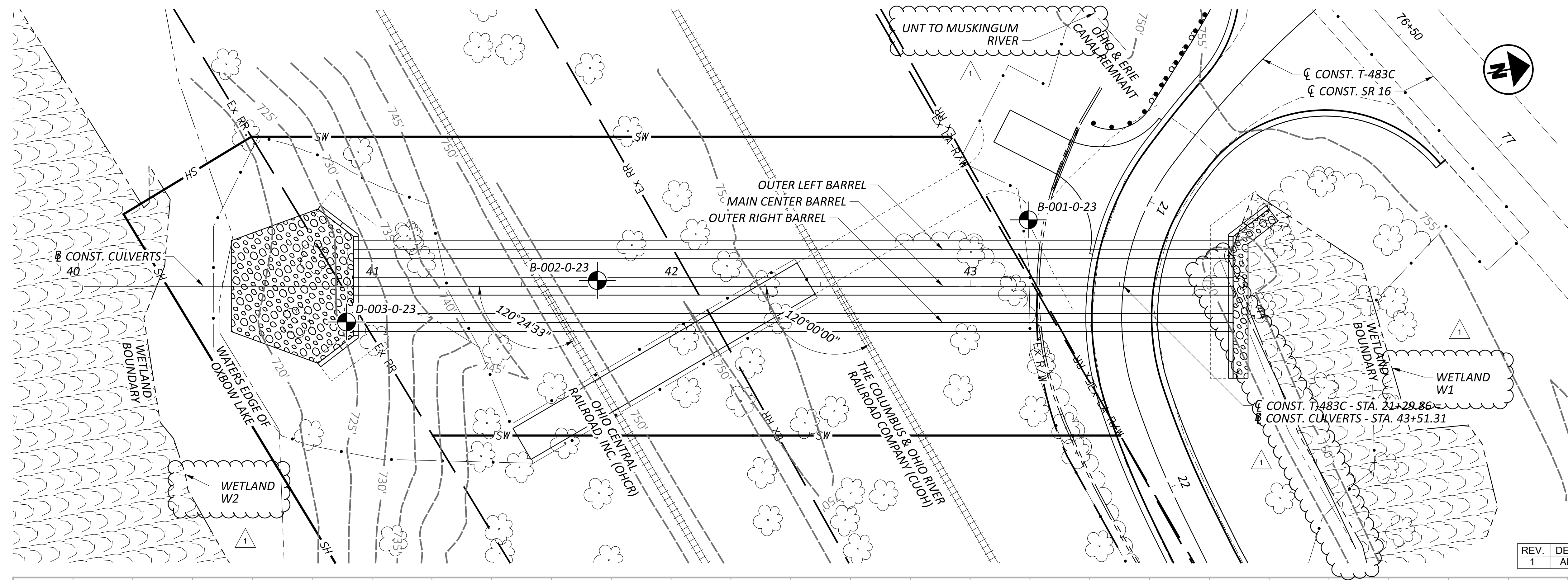
AECOM

DESIGNER
 HKP

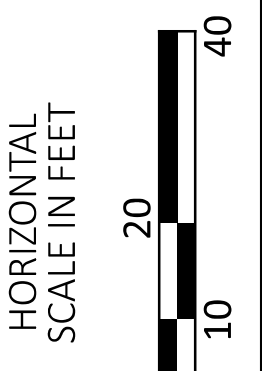
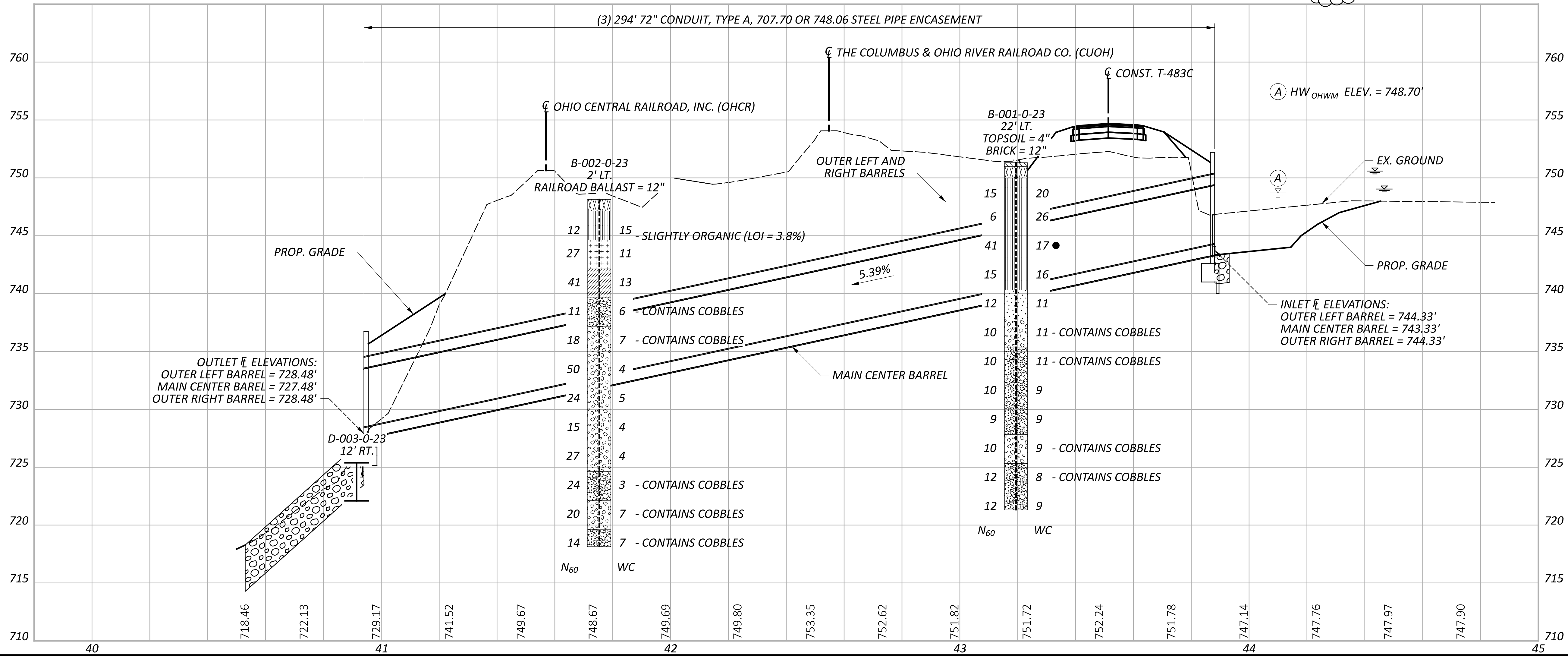
REVIEWER
 AM 11-26-25

PROJECT ID
 119871

SHEET	TOTAL
P.27	31



REV.	DESCRIPTION	DATE
1	ADDENDUM	04/13/2026



GEOTECHNICAL PROFILE - CULVERT
MULTIPLE BARREL CULVERTS AT COS-16-1.40 OVER OHIO & ERIE CANAL REMNANT

DESIGN AGENCY	
DESIGNER	
ARR	
REVIEWER	
SAT 07/29/25	
PROJECT ID	
119871	
SUBSET	TOTAL
2	4
SHEET	TOTAL
P.29	31