

PROJECT : CUY-90 PART 1

TASK : ROCKY RIVER

SUBJECT : ESTIMATED QUANTITIES

CALCULATED BY : SSW

DATE : 4/3/2023

PROJECT NO :

CHECKED BY : CDC

Michael Baker
INTERNATIONAL

DATE : 4/4/2023

ROCKY RIVER VALLEY ESTIMATED QUANTITIES:

ITEM	EXTENSION	QUANTITY	UNIT	DESCRIPTION
202	11203	LS		PORTIONS OF STRUCTURE REMOVED, OVER 20 FOOT SPAN, AS PER PLAN

202	22900	427	SY	APPROACH SLAB REMOVED
-----	-------	-----	----	-----------------------

20	FT	LENGTH
48	FT	WIDTH
4	EA	NUMBER OF APPROACH SLABS

503	21100	174	CY	UNCLASSIFIED EXCAVATION
-----	-------	-----	----	-------------------------

144	FT	LENGTH (ABUTMENT LENGTH)
32.5	AREA	REMOVAL AREA MEASURED IN CAD

509	10001	81011	LB	EPOXY COATED STEEL REINFORCEMENT, AS PER PLAN
-----	-------	-------	----	---

63521	LB	ABUT SLAB SUBTOTAL
	LB	Backwall Repair, including 800# contingency - Added by P/JL 11/11/2024

REAR ABUTMENT

SUBTOTAL = 31761 LB

FORWARD ABUTMENT

SUBTOTAL = 31761 LB

GENERAL

3022	LB	LIGHT POLE PILASTER SUBTOTAL
1302	LB	SIGN SUPPORT SUBTOTAL
14468	LB	EXPANSION JOINT SUBTOTAL

SUBTOTAL = 18792 LB

510	10000	192	EACH	DOWEL HOLES WITH NONSHRINK, NONMETALLIC GROUT
-----	-------	-----	------	---

48	BARS	# TOP BARS IN LT. REAR APPROACH SLAB
48	BARS	# TOP BARS IN RT. REAR APPROACH SLAB
48	BARS	# TOP BARS IN LT. FWD APPROACH SLAB (SAME AS REAR)
48	BARS	# TOP BARS IN RT. FWD APPROACH SLAB (SAME AS REAR)

PROJECT : CUY-90 PART 1

TASK : ROCKY RIVER

SUBJECT : ESTIMATED QUANTITIES

CALCULATED BY : SSW

DATE : 4/3/2023

PROJECT NO :

CHECKED BY : CDC

Michael Baker

INTERNATIONAL

DATE : 4/4/2023

ROCKY RIVER VALLEY ESTIMATED QUANTITIES:

ITEM	EXTENSION	QUANTITY	UNIT	DESCRIPTION
511	34412	56.00	CY	CLASS QC2 CONCRETE WITH QC/QA, SUPERSTRUCTURE

REAR LEFT SLAB REPAIR

	3	FT	LENGTH
	71.917	FT	WIDTH
	9	IN	THICKNESS
SUBTOTAL =	5.99	CY	

REAR RIGHT & FORWARD SLAB REPAIR

	8.25	FT	LENGTH
	215.75	FT	WIDTH
	9	IN	THICKNESS
SUBTOTAL =	49.44	CY	

PROJECT : CUY-90 PART 1

TASK : ROCKY RIVER

SUBJECT : ESTIMATED QUANTITIES

CALCULATED BY : SSW

DATE : 4/3/2023

PROJECT NO :

CHECKED BY : CDC

Michael Baker
INTERNATIONAL

DATE : 4/4/2023

ROCKY RIVER VALLEY ESTIMATED QUANTITIES:

ITEM	EXTENSION	QUANTITY	UNIT	DESCRIPTION
511	34450	76.00	CY	CLASS QC2 CONCRETE WITH QC/QA, BRIDGE DECK (PARAPET)

	3.82	SQ FT	BARRIER AREA (MEDIAN)
	3.00	FT	LENGTH
	1	EA	COUNT
	8.25	FT	LENGTH
	3	EA	COUNT
SUBTOTAL =	3.93	CY	

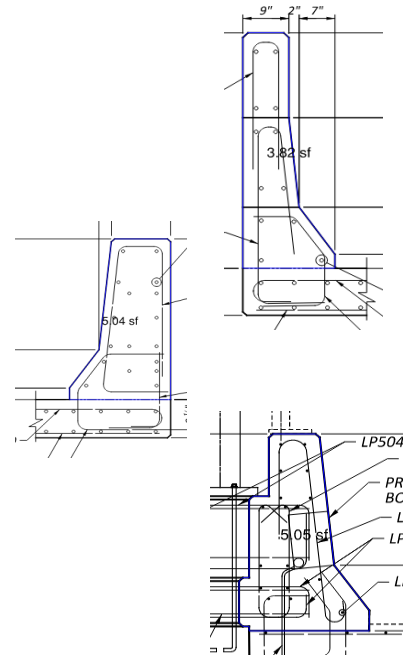
	5.04	SQ FT	BARRIER AREA (OUTSIDE)
	3.00	FT	LENGTH
	1	EA	COUNT
	8.25	FT	LENGTH
	3	EA	COUNT
SUBTOTAL =	5.18	CY	

	3.553778	SQ FT	PILASTER PLAN AREA
	3.32	FT	HEIGHT
	6	EA	COUNT
	5.05	SQ FT	BARRIER AREA (PILASTER)
	16.00	FT	LENGTH
SUBTOTAL =	20.58	CY	

	7.64	SQ FT	ABUTMENT SLAB BARRIER AREA (MEDIAN)
	4.78	SQ FT	ABUTMENT SLAB BARRIER AREA (OUTSIDE)
	16.00	FT	LENGTH
	2	EA	# ABUTMENT SLABS
SUBTOTAL =	20.39	CY	

	7.27	SQ FT	BARRIER AREA (ON WINGWALL)
	36.25	FT	LENGTH (ON WINGWALL)
	6.77	SQ FT	AVERAGE BARRIER TRANSITION AREA (SECTION C AND SECTION H)
	56.00	FT	LENGTH
SUBTOTAL =	23.79	CY	

REAR ABUTMENT =	11	CY
FORWARD ABUT. =	11	CY
SUPER. =	30	CY
GENERAL =	24	CY



PROJECT : CUY-90 PART 1

TASK : ROCKY RIVER

SUBJECT : ESTIMATED QUANTITIES

CALCULATED BY : SSW

DATE : 4/3/2023

PROJECT NO :

CHECKED BY : CDC

Michael Baker

INTERNATIONAL

DATE : 4/4/2023

ROCKY RIVER VALLEY ESTIMATED QUANTITIES:

ITEM	EXTENSION	QUANTITY	UNIT	DESCRIPTION
511	44112	23.33	CY	CLASS QC1 CONCRETE WITH QC/QA, ABUTMENT NOT INCLUDING FOOTING

144.00	FT	Length of RA repair
144.00	FT	Length of FA repair
1.25	FT	Thickness
1.75	FT	Depth: 3 feet (total removal) - 1-3" (slab and haunch)
2		Number of Abutments
23	CY	Total
11.7	CY	Rear Abutment
11.7	CY	Forward Abutment

PROJECT : CUY-90 PART 1

TASK : ROCKY RIVER

SUBJECT : ESTIMATED QUANTITIES

CALCULATED BY : SSW

DATE : 4/3/2023

PROJECT NO :

CHECKED BY : CDC

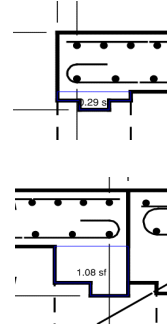
Michael Baker
INTERNATIONAL

DATE : 4/4/2023

ROCKY RIVER VALLEY ESTIMATED QUANTITIES:

ITEM	EXTENSION	QUANTITY	UNIT	DESCRIPTION
511	53012	218.00	CY	CLASS QC2 CONCRETE, MISC.: ABUTMENT SLABS WITH QA/QC

	15.75	FT	LENGTH
	3.84	SQ FT	BARRIER AREA (MEDIAN)
	4.78	SQ FT	BARRIER AREA (OUTSIDE)
	144	FT	WIDTH
	2	EA	COUNT - REAR & FWD
	13	IN	THICKNESS
SUBTOTAL =	202.11	CY	
	1.37	SQ FT	BACKWALL HAUNCH AREAS
SUBTOTAL =	14.61	CY	
REAR ABUTMENT =	109	CY	
FORWARD ABUT. =	109	CY	



512	10100	4036.00	SY	SEALING OF CONCRETE SURFACES (EPOXY-URETHANE)
-----	-------	---------	----	---

ABUTMENT SLABS

	10.35	FT	MEDIAN PERIMETER
	9.88	FT	BARRIER PERIMETER
	15.75	FT	LENGTH
	2.00	EA	# ABUTMENT SLABS
	105.36	SY	
	143.67	FT	<i>Length</i>
	8.50	FT	<i>Average Height</i>
	2		<i>Number of Abutments</i>
	271.37	SY	<i>Backwall Sealing</i>
REAR ABUTMENT =	189	SY	
FORWARD ABUT. =	189	SY	

DECK REPAIRS

	10.35	FT	MEDIAN PERIMETER
	9.19	FT	BARRIER PERIMETER
	27.75	FT	LENGTH
	60.25	SY	

LIGHTPOLE PILASTERS

	10.96	FT	BARRIER PERIMETER @ LIGHTPOLE
	4.00	FT	LENGTH @ LIGHTPOLE
	9.88	FT	BARRIER PERIMETER (ADJACENT TO LIGHTPOLE)
	12.00	FT	LENGTH (ADJACENT TO LIGHTPOLE)
	6.00	EA	# LIGHTPOLES
	108.22	SY	

PROJECT : CUY-90 PART 1

TASK : ROCKY RIVER

SUBJECT : ESTIMATED QUANTITIES

CALCULATED BY : SSW

DATE : 4/3/2023

PROJECT NO :

CHECKED BY : CDC

Michael Baker
INTERNATIONAL

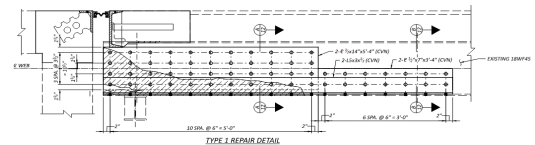
DATE : 4/4/2023

ROCKY RIVER VALLEY ESTIMATED QUANTITIES:

ITEM	EXTENSION	QUANTITY	UNIT	DESCRIPTION
RAILING				
		10.35	FT	MEDIAN PERIMETER
		9.88	FT	BARRIER PERIMETER
		745.75	FT	LT LENGTH (MINUS DECK REPAIR & LIGHTPOLE PILASTERS)
		740.50	FT	RT LENGTH (MINUS DECK REPAIR & LIGHTPOLE PILASTERS)
		3340.62	SY	
SUP. SUBTOTAL =		3510.00	SY	
BARRIER TRANSITIONS				
		9.88	FT	BARRIER PERIMETER
		22.25	FT	LENGTH REAR
		2.00	EA	
		25.75	FT	LENGTH FORWARD LEFT
		1.00	EA	
		22.00	FT	LENGTH FORWARD RIGHT
		1.00	EA	
		101.22	SY	
APPROACH SLABS				
		10.35	FT	MEDIAN PERIMETER
		40.00	FT	LENGTH (APPROACH SLABS)
		47.00	SY	
GEN. SUBTOTAL =		149.00	SY	

513	10200	10701	LB	STRUCTURAL STEEL MEMBERS, LEVEL UF
-----	-------	-------	----	------------------------------------

TYPE 1 REPAIR				
		6	EA	TOTAL COUNT
		2352	SQ IN	1/2" PLATE AREA
		0.5	IN	THICKNESS
		0	SQ IN	3/8" PLATE AREA
		0.375	IN	THICKNESS
		490	LB/FT3	PLATE UNIT WEIGHT
		208	IN	ANGLE LENGTH
		12.8	LB/FT	UNIT WEIGHT
		94		# BOLTS
		1	LB	WT/BOLT (EST 3" LENGTH)
SUBTOTAL =		3896.03	LB	



PROJECT : CUY-90 PART 1

TASK : ROCKY RIVER

SUBJECT : ESTIMATED QUANTITIES

CALCULATED BY : SSW

DATE : 4/3/2023

PROJECT NO :

CHECKED BY : CDC



DATE : 4/4/2023

ROCKY RIVER VALLEY ESTIMATED QUANTITIES:

ITEM	EXTENSION	QUANTITY	UNIT	DESCRIPTION
TYPE 2 REPAIR				
		6	EA	TOTAL COUNT
		1382.25	SQ IN	1/2" PLATE AREA
		0.5	IN	THICKNESS
		386.25	SQ IN	3/8" PLATE AREA
		0.375	IN	THICKNESS
		490	LB/FT3	PLATE UNIT WEIGHT
		107.5	IN	ANGLE LENGTH
		12.8	LB/FT	UNIT WEIGHT
		7.33	FT	NEW SECTION LENGTH
		50	LB/FT	NEW SECTION WT (OLD SECTION 18WF34)
		74		# BOLTS
		1	LB	WT/BOLT (EST 3" LENGTH)
SUBTOTAL =		4754.31	LB	

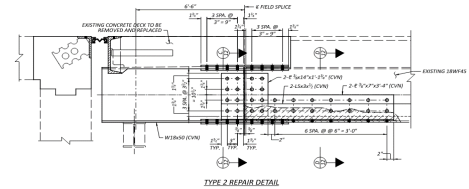


PLATE REPAIRS				Superseded 11/11/2024
		1	EA	TOTAL COUNT
		1764	SQ IN	1/2" PLATE AREA
		0.5	IN	THICKNESS
		0	SQ IN	3/8" PLATE AREA
		0.375	IN	THICKNESS
		490	LB/FT3	PLATE UNIT WEIGHT
SUBTOTAL =		250.10	LB	

586.98	LB	Rear Abutment
490.125	LB	Forward Abutment
1077.105	LB	Total

513	21501	15611	LB	REPLACEMENT OF DETERIORATED END CROSSFRAMES, AS PER PLAN
-----	-------	-------	----	--

END K-FRAMES				
		9	EA	TOTAL COUNT
		144	SQ IN	1/2" PLATE AREA
		0.5	IN	THICKNESS
		490	LB/FT3	PLATE UNIT WEIGHT
		16.25	FT	NEW SECTION LENGTH (W8X28)
		28	LB/FT	UNIT WEIGHT
		18	FT	NEW SECTION LENGTH (WT6X25)
		25	LB/FT	UNIT WEIGHT
		16.25	FT	NEW SECTION LENGTH (W8X28)
		28	LB/FT	UNIT WEIGHT
SUBTOTAL =		12423.75	LB	

WT6X25 JOINT SUPPORTS		
1.42	FT	LENGTH

PROJECT : CUY-90 PART 1

TASK : ROCKY RIVER

SUBJECT : ESTIMATED QUANTITIES

CALCULATED BY : SSW

DATE : 4/3/2023

PROJECT NO :

CHECKED BY : CDC

Michael Baker

I N T E R N A T I O N A L

DATE : 4/4/2023

ROCKY RIVER VALLEY ESTIMATED QUANTITIES:

ITEM	EXTENSION	QUANTITY	UNIT	DESCRIPTION
		25.00	LB/FT	UNIT WT
		32.00		COUNT
SUBTOTAL =		1133.36	LB	

PROJECT : CUY-90 PART 1



TASK : ROCKY RIVER

PROJECT NO :

SUBJECT : ESTIMATED QUANTITIES

CALCULATED BY : SSW

DATE : 4/3/2023

CHECKED BY : CDC

DATE : 4/4/2023

ROCKY RIVER VALLEY ESTIMATED QUANTITIES:

ITEM	EXTENSION	QUANTITY	UNIT	DESCRIPTION
		SUPPORT ANGLES		
		32.00		COUNT
		19.83	LB	WT
	SUBTOTAL =	634.46	LB	
		10%		APPLY FOR INCIDENTALS

513	95020	LS		STRUCTURAL STEEL, MISC.: GIRDER SPLICE REPAIR
-----	-------	----	--	---

514	00050	566	SF	SURFACE PREPARATION OF EXISTING STRUCTURAL STEEL
-----	-------	-----	----	--

		4.875	FT	PERIMETER
		TYPE 1 REPAIR		
		9	FT	LENGTH OF REPAIR (TYPE 1, CONSERVATIVE)
		6	EA	LOCATIONS (TYPE 1)
		TYPE 2 REPAIR		
		6	FT	LENGTH OF REPAIR (TYPE 2, CONSERVATIVE)
		6	EA	LOCATIONS (TYPE 2)
		GIRDER REPAIRS		
		52.75	SF	
		15%		APPLY FOR INCIDENTALS

514	00056	566	SF	FIELD PAINTING OF EXISTING STRUCTURAL STEEL, PRIME COAT
514	00060	3481	SF	FIELD PAINTING OF STRUCTURAL STEEL, INTERMEDIATE COAT

		ADD NEW K-FRAMES		
		3.52	FT	PERIMETER W8X28
		32.50	FT	LENGTH
		2.36	FT	PERIMETER (WT6X25)
		18.00	FT	LENGTH
		9	EA	COUNT
	SUBTOTAL =	1413.44	SF	

		WT6X25 JOINT SUPPORTS		
		1.42	FT	LENGTH
		2.36	FT	PERIMETER
		32.00		COUNT
	SUBTOTAL =	106.99	SF	

PROJECT : CUY-90 PART 1

TASK : ROCKY RIVER

SUBJECT : ESTIMATED QUANTITIES

CALCULATED BY : SSW

DATE : 4/3/2023

PROJECT NO :

CHECKED BY : CDC

Michael Baker

INTERNATIONAL

DATE : 4/4/2023

ROCKY RIVER VALLEY ESTIMATED QUANTITIES:

ITEM	EXTENSION	QUANTITY	UNIT	DESCRIPTION
		SUPPORT ANGLES		
		32.00		COUNT
		0.75	FT	LENGTH
		1.67	FT	PERIMETER
	SUBTOTAL =	40.00	SF	
		GIRDER PLATES		
		28.75	SF	Rear Abutment
		24.00	SF	Forward Abutment
	SUBTOTAL =	52.75	SF	
		TYPE 1 REPAIR		
		4.875	FT	PERIMETER
		9.00	FT	LENGTH OF REPAIR (TYPE 1, CONSERVATIVE)
		6.00	EA	LOCATIONS (TYPE 1)
	SUBTOTAL =	263.25	SF	
		TYPE 2 REPAIR		
		4.875	FT	PERIMETER
		11.00	FT	LENGTH OF REPAIR (TYPE 1, CONSERVATIVE)
		6.00	EA	LOCATIONS (TYPE 1)
	SUBTOTAL =	321.75	SF	
		BEARINGS		
		11.00	SF	FROM CDC AND SSW CONCURRENCE 4/23/2024
		4.00	EA	REPLACEMENT LOCATIONS
	SUBTOTAL =	44.00	SF	
		30%		APPLY FOR INCIDENTALS

514	00066	3481	SF	FIELD PAINTING OF STRUCTURAL STEEL, FINISH COAT
-----	-------	------	----	---

514	27800	LS		FIELD PAINTING, MISC.: COATING SYSTEM REPAIR
-----	-------	----	--	--

516	11210	288	FT	STRUCTURAL STEEL EXPANSION JOINT INCLUDING ELASTOMERIC STRIP SEAL
-----	-------	-----	----	---

		144	FT	LENGTH
		2	EA	COUNT - REAR & FWD

PROJECT : CUY-90 PART 1

TASK : ROCKY RIVER

SUBJECT : ESTIMATED QUANTITIES

CALCULATED BY : SSW

DATE : 4/3/2023

PROJECT NO :

CHECKED BY : CDC

Michael Baker

INTERNATIONAL

DATE : 4/4/2023

ROCKY RIVER VALLEY ESTIMATED QUANTITIES:

ITEM	EXTENSION	QUANTITY	UNIT	DESCRIPTION
516	13600	87	SF	1" PREFORMED EXPANSION JOINT FILLER
		21.67	SF	AREA OF APP SLAB TO BARRIER INTERFACE
		4.00		NUMBER OF INTERFACES
516	13900	388	SF	2" PREFORMED EXPANSION JOINT FILLER
		193.65	SF	AREA OF MEDIAN BARRIER INTERFACE
		2.00		NUMBER OF INTERFACES
516	46201	4	EA	BEARING DEVICE, ROCKER, AS PER PLAN
		2	EA	Rear
		2	EA	Forward
		4	EA	Total
516	47000	LS		JACKING AND TEMPORARY SUPPORT OF SUPERSTRUCTURE

PROJECT : CUY-90 PART 1

TASK : ROCKY RIVER

SUBJECT : ESTIMATED QUANTITIES

CALCULATED BY : SSW

DATE : 4/3/2023

PROJECT NO :

CHECKED BY : CDC

Michael Baker
INTERNATIONAL

DATE : 4/4/2023

ROCKY RIVER VALLEY ESTIMATED QUANTITIES:

ITEM	EXTENSION	QUANTITY	UNIT	DESCRIPTION
518	12500	8	EACH	SCUPPER, MISC: PLUG AND FILL EXISTING SCUPPER

8	SCUPPERS	AT ABUTMENT MEDIAN
---	----------	--------------------

518	21200	39	CY	POROUS BACKFILL WITH GEOTEXTILE FABRIC
-----	-------	----	----	--

144	FT	LENGTH (ABUTMENT LENGTH)
7.25	AREA	BACKFILL AREA MEASURED IN CAD

518	40000	144	FT	6" PERFORATED CORRUGATED PLASTIC PIPE
-----	-------	-----	----	---------------------------------------

34.75	FT	PHASE 3 LENGTH
36.75	FT	PHASE 2 LENGTH
40.5	FT	PHASE 4 LENGTH
31.25	FT	PHASE 5 LENGTH

518	40010	92	FT	6" NON-PERFORATED CORRUGATED PLASTIC PIPE, INCLUDING SPECIALS
-----	-------	----	----	---

23	FT	PHASE 3 LENGTH
23	FT	PHASE 2 LENGTH
23	FT	PHASE 4 LENGTH
23	FT	PHASE 5 LENGTH

PROJECT : CUY-90 PART 1

TASK : ROCKY RIVER

SUBJECT : ESTIMATED QUANTITIES

CALCULATED BY : SSW

DATE : 4/3/2023

PROJECT NO :

CHECKED BY : CDC

Michael Baker
INTERNATIONAL

DATE : 4/4/2023

ROCKY RIVER VALLEY ESTIMATED QUANTITIES:

ITEM	EXTENSION	QUANTITY	UNIT	DESCRIPTION
526	15010	623	SY	REINFORCED CONCRETE APPROACH SLABS WITH QC/QA (T=13")

140	FT	WIDTH
20	FT	LENGTH
2	EA	COUNT - REAR & FWD

526	90010	280	FT	TYPE A INSTALLATION
-----	-------	-----	----	---------------------

140	FT	WIDTH
2	EA	COUNT

601	20010	61	CY	CRUSHED AGGREGATE SLOPE PROTECTION
-----	-------	----	----	------------------------------------

45	FT	LENGTH ALONG SLOPE
1.5	FT	DEPTH
6	FT	WIDTH

61 SEE CDC INDEPENDENT CALC

SPECIAL	60740300	96	FT	VANDAL PROTECTION FENCE REMOVED AND REBUILT
---------	----------	----	----	---

16	FT	LENGTH
6	EA	COUNT

611	96600	92	FT	CONDUIT, BORED OR JACKED, 6", 707.45
-----	-------	----	----	--------------------------------------

23	FT	PHASE 3 LENGTH
23	FT	PHASE 2 LENGTH
23	FT	PHASE 4 LENGTH
23	FT	PHASE 5 LENGTH

611	99710	4	EACH	PRECAST REINFORCED CONCRETE OUTLET
-----	-------	---	------	------------------------------------

1	EACH	PHASE 3
1	EACH	PHASE 2
1	EACH	PHASE 4
1	EACH	PHASE 5

PROJECT : CUY-90 PART 1

TASK : ROCKY RIVER

SUBJECT : ESTIMATED QUANTITIES

CALCULATED BY : SSW

DATE : 4/3/2023

PROJECT NO :

CHECKED BY : CDC

Michael Baker
INTERNATIONAL

DATE : 4/4/2023

ROCKY RIVER VALLEY ESTIMATED QUANTITIES:

ITEM	EXTENSION	QUANTITY	UNIT	DESCRIPTION
613	41200	60	CY	LOW STRENGTH MORTAR BACKFILL

144	FT	LENGTH (ABUTMENT LENGTH)
7.25	AREA	BACKFILL AREA MEASURED IN CAD

60 SEE CDC INDEPENDENT CHECK

838	20700	104	CY	GABIONS
-----	-------	-----	----	---------

24	FT	GABION REPAIR LENGTH
117	AREA	AREA OF GABIONS

844	10001	832	SF	CONCRETE PATCHING WITH GALVANIC ANODE PROTECTION, AS PER PLAN
-----	-------	-----	----	---

2		Factor of safety
234.00	SF	Rear Abutment actual
182	SF	Forward Abutment actual
468.00	SF	Rear Abutment factored
364	SF	Forward Abutment factored
832.00	SF	Total

848	10201	12239	SY	SUPERPLASTICIZED DENSE CONCRETE OVERLAY USING HYDRODEMOLITION 1 1/2" INCH THICK, AS PER PLAN
-----	-------	-------	----	--

848	20000	12239	SY	SURFACE PREPARATION USING HYDRODEMOLITION
-----	-------	-------	----	---

848	30200	123	CY	SUPERPLASTICIZED DENSE CONCRETE OVERLAY (VARIABLE THICKNESS), MATERIAL ONLY
-----	-------	-----	----	---

9893	SY	TRAIN OVERLAY AREA
108	CY	TRAIN VAR THICK
0.01091	CY/SY	

0.01		APPLY CY/SY FROM TRAIN TO ROCKY RIVER, SINCE SOUNDINGS WEREN'T PERFORMED AND DECK CONDITION IS CLOSE TO TRAIN
122	CY	

848	50000	241	SY	HAND CHIPPING
-----	-------	-----	----	---------------

9893	SY	TRAIN OVERLAY AREA
194	SY	TRAIN VAR THICK
0.01963	SY/SY	APPLY TO ROCKY RIVER

PROJECT : CUY-90 PART 1

TASK : ROCKY RIVER

SUBJECT : ESTIMATED QUANTITIES

CALCULATED BY : SSW

DATE : 4/3/2023

PROJECT NO :

CHECKED BY : CDC

Michael Baker

I N T E R N A T I O N A L

DATE : 4/4/2023

ROCKY RIVER VALLEY ESTIMATED QUANTITIES:

ITEM	EXTENSION	QUANTITY	UNIT	DESCRIPTION
		240.30	SY	

848	50100	LS		TEST SLAB
-----	-------	----	--	-----------

848	50320	12239	SY	EXISTING CONCRETE OVERLAY REMOVED,1 1/4" NOMINAL THICKNESS
-----	-------	-------	----	--

PROJECT : CUY-90 PART 1

Michael Baker

TASK : ROCKY RIVER

PROJECT NO :

INTERNATIONAL

SUBJECT : ESTIMATED QUANTITIES

CALCULATED BY : SSW

DATE : 4/3/2023

CHECKED BY : CDC

DATE : 4/4/2023

ROCKY RIVER VALLEY ESTIMATED QUANTITIES:

ITEM	EXTENSION	QUANTITY	UNIT	DESCRIPTION
848	50340	100	SY	REMOVAL OF DEBONDED OR DETERIORATED EXISTING VARIABLE THICKNESS CONCRETE OVERLAY

512	10300	927.00	SY	SEALING CONCRETE BRIDGE DECKS WITH HMWM RESIN
-----	-------	--------	----	---

SUPER.			
	805.00	FT	DECK LENGTH
	5.00	FT	WIDTH
	2.00	EA	# DECK JOINTS
SUBTOTAL =	895	SY	
GENERAL			
	20.00	FT	APPROACH SLAB LENGTH
	2.00	FT	WIDTH
	4.00	EA	# APPROACH SLAB JOINTS
SUBTOTAL =	18	SY	
REAR ABUTMENT			
	15.75	FT	ABUTMENT SLAB LENGTH
	2.00	FT	WIDTH
	2.00	EA	# APPROACH SLAB JOINTS
SUBTOTAL =	7	SY	
FORWARD ABUTMENT			
	15.75	FT	ABUTMENT SLAB LENGTH
	2.00	FT	WIDTH
	2.00	EA	# APPROACH SLAB JOINTS
SUBTOTAL =	7	SY	