

STATE OF OHIO DEPARTMENT OF TRANSPORTATION

DAR SHAWNEE PRAIRIE PRESERVE PVG

DARKE COUNTY PARK DISTRICT
GREENVILLE TOWNSHIP
DARKE COUNTY

FEDERAL PROJECT NUMBER

NON-FEDERAL

RAILROAD INVOLVEMENT

NONE

PROJECT DESCRIPTION

THIS PROJECT SHALL CONSIST OF PAVEMENT REPAIRS, CHIP SEALING AND STRIPING OF THE DRIVEWAY AND PARKING LOT OF THE SHAWNEE PRAIRIE PRESERVE OFF OF SR 502.

EARTH DISTURBED AREAS

PROJECT EARTH DISTURBED AREA: 0 ACRES
ESTIMATED CONTRACTOR EARTH DISTURBED AREA: 0 ACRES
NOTICE OF INTENT EARTH DISTURBED AREA: N/A
NOI NOT REQUIRED

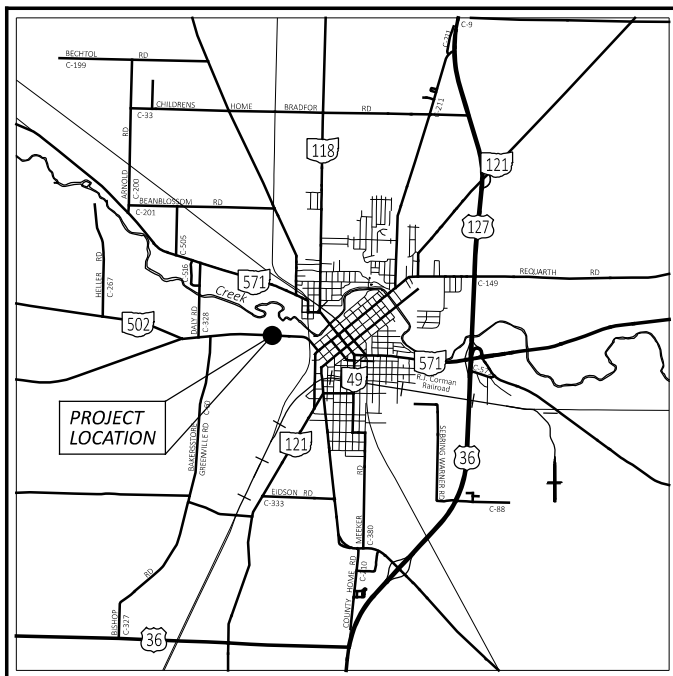
2023 SPECIFICATIONS

THE STANDARD SPECIFICATIONS OF THE STATE OF OHIO, DEPARTMENT OF TRANSPORTATION, INCLUDING SUPPLEMENTAL SPECIFICATIONS LISTED IN THE PLANS AND CHANGES LISTED IN THE PROPOSAL SHALL GOVERN THIS IMPROVEMENT.

I HEREBY APPROVE THESE PLANS AND DECLARE THAT THE MAKING OF THIS IMPROVEMENT WILL NOT REQUIRE THE CLOSING TO TRAFFIC OF THE HIGHWAY AND THAT PROVISIONS FOR THE MAINTENANCE AND SAFETY OF TRAFFIC WILL BE AS SET FORTH ON THE PLANS AND ESTIMATES.

John W. O'Brien
John W. O'Brien
District 07 Deputy Director

Pamela Boratyn
Pamela Boratyn
Director, Department of Transportation



LOCATION MAP

LATITUDE: 40°05'58" LONGITUDE: 84°38'48"



SCALE IN MILES



PORTION TO BE IMPROVED	—————
INTERSTATE HIGHWAY	—————
FEDERAL ROUTES	—————
STATE ROUTES	—————
COUNTY & TOWNSHIP ROADS	—————
OTHER ROADS	—————

DESIGN EXCEPTIONS

NONE

ADA DESIGN WAIVERS

NONE

INDEX OF SHEETS:

TITLE SHEET	1
TYPICAL SECTION	2
GENERAL NOTES	3,4
GENERAL SUMMARY	5
PLAN VIEW	6

DAR-SHAWNEE PRAIRIE PRESERVE PVG

MODEL: Sheet PAPER: 17x11 (in.) DATE: 1/28/2025 TIME: 2:53:21 PM USER: bankrom3 pwc:\ohio-dot-pw-bentley.com\shahdot-pw-02\Documents\07 Active Projects\District 07\Darke\115486\400-Engineering\Roadway\Sheets\115486_GT001.dgn

UNDERGROUND UTILITIES
Contact Two Working Days
Before You Dig

OHIO 811. 8-1-1. or 1-800-362-2764
(Non members must be called directly)

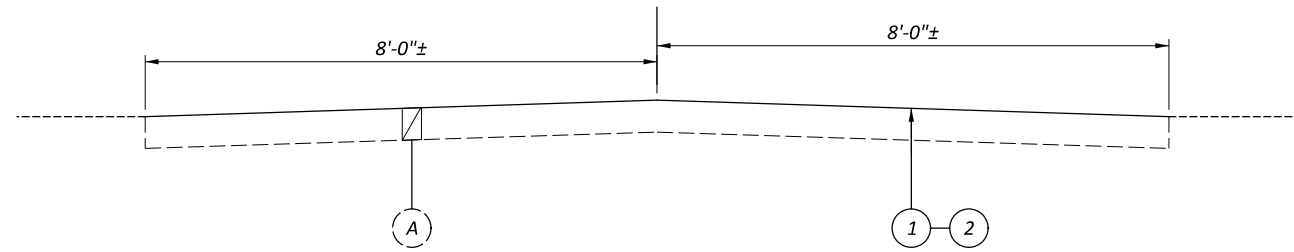
PLAN PREPARED BY:
OHIO DEPARTMENT OF TRANSPORTATION
DISTRICT 7 ENGINEERING
SIDNEY, OH

STANDARD CONSTRUCTION DRAWINGS				SUPPLEMENTAL SPECIFICATIONS		SPECIAL PROVISIONS
BP-3.1	1/19/24			800-2023	7/19/24	
DM-4.3	1/15/16			832	7/19/24	
DM-4.4	1/15/16					

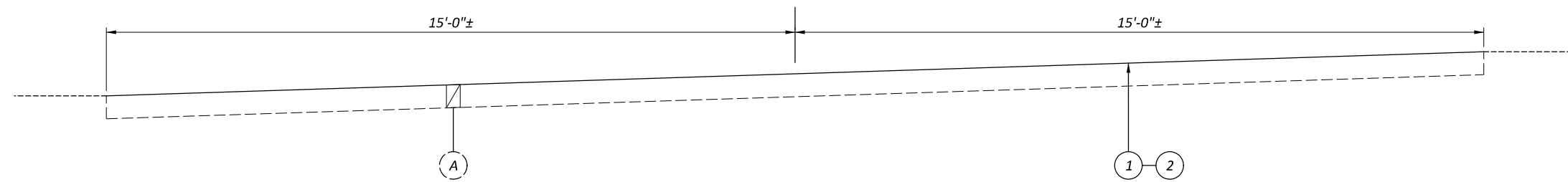
ENGINEER'S SEAL
ROADWAY

DAR-SHAWNEE PRAIRIE PRESERVE PVG

DESIGN AGENCY	
DESIGNER	ANW
REVIEWER	CWW
PROJECT ID	03/30/22
SHEET	115466
TOTAL	6



ENTRANCE DRIVE TYPICAL SECTION
 SECTION A-A ON PLAN VIEW (SHEET 5)



PARKING LOT TYPICAL SECTION
 SECTION B-B ON PLAN VIEW (SHEET 5)

LEGEND

- (A) EXISTING PAVEMENT (DEPTH UNKNOWN)
- (1) PROPOSED ITEM 422 - AGGREGATE, SINGLE CHIP SEAL, TYPE A, AS PER PLAN
- (2) PROPOSED ITEM 422 - EMULSION, CHIP SEAL, AS PER PLAN @ 0.40 GAL/SY

NOTES

1. USE ITEM 617 - COMPACTED AGGREGATE (12 CY) TO REPAIR LOCATIONS WHERE GOUGING/RUTTING IS TAKING PLACE AS DIRECTED BY THE ENGINEER

DESIGN AGENCY



DESIGNER

ANW

REVIEWER

CWW 03/30/22

PROJECT ID

115466

SHEET TOTAL

P.2 | 6

UTILITIES

THERE ARE NO UNDERGROUND UTILITIES SHOWN ON THIS PLAN. THE NATURE OF THE WORK REQUIRED BY THIS PROJECT WILL NOT AFFECT ANY KNOWN UNDERGROUND UTILITIES THAT EXIST UNDER, OR ADJACENT TO, THE WORK AREA.

WORK LIMITS

THE WORK LIMITS SHOWN ON THESE PLANS ARE FOR PHYSICAL CONSTRUCTION ONLY. PROVIDE THE INSTALLATION AND OPERATION OF ALL WORK ZONE TRAFFIC CONTROL AND WORK ZONE TRAFFIC CONTROL DEVICES REQUIRED BY THESE PLANS WHETHER INSIDE OR OUTSIDE THESE WORK LIMITS.

ITEM 253 - PAVEMENT REPAIR, AS PER PLAN

PAVEMENT REPAIR SHALL BE IN ACCORDANCE WITH ITEM 253 - PAVEMENT REPAIR, WITH THE FOLLOWING ADDITIONS:

THE AREAS OF ITEM 253, PAVEMENT REPAIR, AS PER PLAN (2" DEPTH) ARE LOCATED THROUGHOUT THE PROJECT LIMITS. THE ENGINEER SHALL DESIGNATE THE LOCATIONS AND LIMITS OF THE AREAS TO BE REPAIRED. THE AREAS SHALL BE ROUGHLY RECTANGULAR IN SHAPE AND SAWED OR MILLED TO A NEAT LINE. THE DEPTH OF REMOVAL, AS DIRECTED BY THE ENGINEER, SHALL BE SUFFICIENT TO REMOVE ALL DETERIORATED PAVEMENT. THE ENTIRE AREA INCLUDING VERTICAL FACES SHALL BE COATED PRIOR TO PLACING THE REPLACEMENT MATERIAL PER 253.03. THE REPLACEMENT MATERIAL SHALL BE ITEM 441 - ASPHALT CONCRETE, INTERMEDIATE COURSE, TYPE 2, (448) AND DEPTH OF THE REPAIR SHALL BE MEASURED FROM THE EXISTING PAVEMENT SURFACE.

THE ESTIMATED PAVEMENT REPAIR AREAS SHALL BE A MINIMUM OF 2 FEET IN WIDTH AND 2 INCHES IN DEPTH OR AS DIRECTED BY THE ENGINEER.

THE FOLLOWING ESTIMATED QUANTITIES HAVE BEEN CARRIED TO THE GENERAL SUMMARY TO BE USED AS DIRECTED BY THE ENGINEER.

ITEM 253 - PAVEMENT REPAIR, AS PER PLAN = 40 SY

EQUIPMENT CALIBRATION

THE CONTRACTOR SHALL CALIBRATE THE MIXING EQUIPMENT AS PER 421.07. THIS CALIBRATION SHALL BE PERFORMED DURING NORMAL BUSINESS HOURS - MONDAY THROUGH FRIDAY, FROM 7:00 AM TO 5:00 PM.

TRUCK LOADING/HAULING

LOADS SHALL BE HELD TO A MAXIMUM LOAD OF SIXTEEN (16) TONS.

REVIEW OF DRAINAGE FACILITIES

PRIOR TO THE START OF WORK AND AGAIN BEFORE FINAL ACCEPTANCE, PERFORM AN INSPECTION WITH REPRESENTATIVES OF THE DEPARTMENT, CONTRACTOR AND LOCALS OF ALL EXISTING DRAINAGE FACILITIES THAT ARE TO REMAIN IN SERVICE WHICH MAY BE AFFECTED BY THE WORK. THE CONDITION OF THE EXISTING CONDUITS AND THEIR APPURTENANCES IS DETERMINED FROM FIELD OBSERVATIONS. RECORDS OF THE INSPECTION ARE MAINTAINED BY THE DEPARTMENT.

CONFIRM ALL EXISTING SEWERS INSPECTED INITIALLY BY THE ABOVE-MENTIONED PARTIES ARE MAINTAINED AND LEFT IN A CONDITION COMPARABLE TO THAT DETERMINED BY THE ORIGINAL INSPECTION. THE CONTRACTOR IS RESPONSIBLE TO CORRECT ANY CHANGE IN THE CONDITION RESULTING FROM THEIR OPERATIONS AS DIRECTED AND APPROVED BY THE ENGINEER.

CONTROL WORK

NO WORK SHALL BE PERFORMED THE TWO DAYS PRIOR TO A NATIONAL OR STATE HOLIDAY (MEMORIAL DAY, FORTH OF JULY, LABOR DAY, THANKSGIVING). NO WORK SHALL BE PERFORMED AFTER 12:00 NOON ON FRIDAYS UNTIL 6:00 AM ON MONDAYS. ALL WORK SHALL BE COMPLETED WITHIN FOURTEEN (14) DAYS OF STARTING THE PROJECT.

NO WORK SHALL BE STARTED THAT CANNOT BE COMPLETED TO A CONDITION THAT CAN BE OPENED TO THE PUBLIC, IN THE OPINION OF THE ENGINEER, BY FRIDAY NOON FOR A SPECIAL SCHEDULED EVENT. THE DATES OF SPECIAL EVENTS WILL BE SCHEDULED THROUGH THE DARKE COUNTY PARK DISTRICT.

THE ABOVE RESTRICTIONS WILL NOT APPLY TO AREAS THAT CAN BE COMPLETELY CLOSED FROM THE PUBLIC WITH THE APPROVAL OF THE PARK DISTRICT.

NOTIFICATION OF TRAFFIC RESTRICTIONS

THROUGHOUT THE DURATION OF THE PROJECT, THE CONTRACTOR SHALL NOTIFY THE PROJECT ENGINEER IN WRITING OF ALL TRAFFIC RESTRICTIONS AND UPCOMING MAINTENANCE OF TRAFFIC CHANGES. THE CONTRACTOR SHALL ENSURE THE WRITTEN NOTIFICATION IS SUBMITTED IN A TIMELY MANNER TO ALLOW THE PROJECT ENGINEER TO MEET THE REQUIRED TIME FRAMES SET FORTH IN THE TABLE BELOW TO INFORM THE SPECIAL HAULING PERMITS SECTION (HAULING.PERMITS@DOT.OHIO.GOV) AND THE DISTRICT PUBLIC INFORMATION OFFICE (PIO). THIS NOTIFICATION SHALL BE RECEIVED BY THE PROJECT ENGINEER PRIOR TO THE PHYSICAL SETUP OF ANY APPLICABLE SIGNS OR MESSAGE BOARDS.

INFORMATION SHOULD INCLUDE, BUT IS NOT LIMITED TO, ALL CONSTRUCTION ACTIVITIES THAT IMPACT OR INTERFERE WITH TRAFFIC AND SHALL LIST THE SPECIFIC LOCATION, TYPE OF WORK, ROAD STATUS, DATE AND TIME OF RESTRICTION, DURATION OF RESTRICTION, NUMBER OF LANES MAINTAINED, NUMBER OF LANES CLOSED, MINIMUM VERTICAL CLEARANCE, MINIMUM WIDTH OF DRIVABLE PAVEMENT, DETOUR ROUTES, IF APPLICABLE, AND ANY OTHER INFORMATION REQUESTED BY THE PROJECT ENGINEER.

NOTICE OF CLOSURE SIGN TIME TABLE		
ITEM	DURATION OF CLOSURE	SIGN DISPLAYED TO PUBLIC
RAMP & ROAD CLOSURES	>= 2 WEEKS	21 CALENDAR DAYS PRIOR TO CLOSURE
	>12 HOURS & <2 WEEKS	14 CALENDAR DAYS PRIOR TO CLOSURE
	<= 12 HOURS	4 CALENDAR DAYS PRIOR TO CLOSURE
LANE CLOSURES & RESTRICTIONS	>= 2 WEEKS	14 CALENDAR DAYS PRIOR TO CLOSURE
	< 2 WEEKS	5 BUSINESS DAYS PRIOR TO CLOSURE
START OF CONSTRUCTION & TRAFFIC PATTERN CHANGES	N/A	14 CALENDAR DAYS PRIOR TO IMPLEMENTATION

ANY UNFORESEEN CONDITIONS NOT SPECIFIED IN THE PLANS REQUIRING TRAFFIC RESTRICTIONS SHALL ALSO BE REPORTED TO THE PROJECT ENGINEER USING THE NOTIFICATION TIME TABLE.

ITEM 614 - MAINTAINING TRAFFIC

THE CONTRACTORS SHALL FURNISH AND PLACE ALL SIGNS, LIGHTS AND BARRIERS TO CLOSE AREAS, WHEN PERMITTED DURING OPERATIONS. THE CONTRACTOR SHALL FURNISH AND PLACE SIGNS TO CONTROL TRAFFIC IN AREAS OPEN TO TRAFFIC, AS DIRECTED BY THE ENGINEER. ALL WORK AND TRAFFIC CONTROL DEVICES SHALL BE IN ACCORDANCE WITH CMS 614 AND OTHER APPLICABLE PORTIONS OF THE SPECIFICATIONS, AS WELL AS THE OHIO MANUAL OF UNIFORM TRAFFIC CONTROL DEVICES.

THE CONTRACTOR SHALL KEEP THE ENTRANCE DRIVE MAINTAINED FOR TRAFFIC IN AND OUT OF THE PARK TO THE MAXIMUM EXTENT PRACTICABLE (SEE FLEXIBLE START WINDOW CONTRACT NOTE).

PAYMENT FOR ALL LABOR, EQUIPMENT AND MATERIALS SHALL BE INCLUDED IN THE LUMP SUM CONTRACT PRICE FOR ITEM 614, MAINTAINING TRAFFIC, UNLESS SEPARATELY ITEMIZED IN THE PLAN.

FLEXIBLE START WINDOW CONTRACT

THE CONTRACTOR SHALL FOLLOW THE FLEXIBLE START WINDOW CONTRACT FOR THE CRITICAL WORK AS INDICATED BELOW. THE CONTRACTOR WILL BE ASSESSED A DISINCENTIVE FOR EACH CALENDAR DAY.

FLEXIBLE START WINDOW CONTRACT TABLE (PN 129)

DESCRIPTION OF CRITICAL WORK	CONSECUTIVE CALENDAR DAYS TO COMPLETE	DISINCENTIVE \$ PER DAY	WORK WINDOW	
			START	END
ALL WORK ON PROJECT	30	PER CMS 108.07	7/7/2025	8/29/2025

TO THE GREATEST EXTENT POSSIBLE, THE CONTRACTOR SHALL OPEN THE DRIVE AND PARKING LOT TO TRAFFIC IN THE WAITING PERIOD BETWEEN COMPLETING THE CHIP SEAL AND THE FOG SEAL/APPLICATION OF MARKINGS.

**ITEM 422 - AGGREGATE, SINGLE CHIP SEAL, TYPE A, AS PER PLAN
ITEM 422 - EMULSION, CHIP SEAL, AS PER PLAN**

THE REQUIREMENTS OF 422 APPLY EXCEPT AS FOLLOWS:

THE SECOND SENTENCE OF 422.01 IS DELETED. THE REQUIREMENTS OF 422.05 AND 422.12 ARE DELETED IN THEIR ENTIRETY.

CENTERLINE DELINEATION IS REQUIRED TO BE IN PLACE IN ANY SECTION OF UNFLAGGED WORK ZONE.

COORDINATION WITH DARKE COUNTY PARK DISTRICT

THE CONTRACTOR SHALL COORDINATE WITH THE DARKE COUNTY PARK DISTRICT AND INFORM THEM OF THE SCHEDULE OF PROJECT ACTIVITIES.

DARKE COUNTY PARK DISTRICT
ROBB CLIFFORD
EXECUTIVE DIRECTOR
4267 OH-502, GREENVILLE, OH 45331
OFFICE: 937-548-0165
RCLIFFORD@DARKECOUNTYPARKS.ORG

PROTECTION OF WATER RESOURCES

THE CONTRACTOR SHALL NOT DISCHARGE TOXIC OR HAZARDOUS MATERIALS SUCH AS SEALANTS, PAINT, SOLVENTS, CLEANING AGENTS EARTHEN MATERIALS, WASTE-WATER, FUELS OR DEBRIS OF ANY KIND TO A WATERWAY. IF REFUELING OF IMMOBILE EQUIPMENT IS NECESSARY WITHIN THE FLOODPLAIN OR NEAR ANY TRIBUTARY DRAINAGE WAYS, DITCHES OR STREAM, THE CONTRACTOR SHALL PROVIDE SECONDARY CONTAINMENT WITH ENOUGH CAPACITY TO COMPLETELY CONTAIN AND COLLECT ALL POTENTIAL LIQUID WASTES IN THE EVENT OF A SPILL.

ANY AND ALL CONSTRUCTION DEBRI, EARTHEN DEBRIS, EXCESS ASPHALT OR CONCRETE, WOOD DEBRIS FROM CLEARING, EXCESS FILL MATERIAL, AND TRASH SHOULD BE DISPOSED OF AT AN APPROVED UPLAND SITE OR LAND FILL ABOVE FEMA 100-YEAR FLOOD ELEVATIONS. DISPOSAL OF ANY SUCH MATERIALS WITHIN 1000 FEET OF A SCENIC RIVER IS PROHIBITED.

IN ACCORDANCE WITH ORC 3750.06, SPILLS MUST BE REPORTED TO THE LOCAL FIRE DEPARTMENT (911); THE LOCAL EMERGENCY COORDINATOR (937-548-2020), AND THE OHIO SPILL LINE (1-800-282-9378).

THE CONTRACTOR SHALL KEEP ALL IDLE EQUIPMENT, FUELS, LUBRICANTS, AND ANY STORAGE FOR/OF POTENTIALLY TOXIC OR HAZARDOUS MATERIALS OUT OF THE FEMA DESIGNATED SPECIAL FLOOD HAZARD AREA AND NOT WITHIN 1000 FEET OF A SCENIC RIVER.

DESIGN AGENCY



DESIGNER

ANW

REVIEWER

CWW 03/30/22

PROJECT ID

115466

SHEET TOTAL

P.3 6

ITEM 690, SPECIAL - FOG SEAL

DESCRIPTION: THIS WORK CONSISTS OF PREPARING AND FOG SEALING OVER THE PROPOSED CHIP SEAL SURFACE. THE REQUIREMENTS OF ITEM 407 TACK COAT APPLY EXCEPT AS NOTED BELOW.

MATERIAL: USE SUPPLEMENT 1032 CERTIFIED 702.12 NON-TRACKING TACK DILUTED A MAXIMUM OF 2 PARTS NON-TRACKING TACK TO 1 PART WATER. ONLY DILUTE MATERIAL AT THE ASPHALT TERMINAL. SUPPLY CERTIFIED TEST DATA TO THE ENGINEER SHOWING THE MATERIAL SUPPLIED WAS TESTED FOR AND MEETS 702.12 NON-TRACKING TACK PRIOR TO DILUTION.

EQUIPMENT: CONTACT THE MANUFACTURER'S REPRESENTATIVE FOR REQUIRED SPRAY NOZZLE SIZE, AND DISTRIBUTOR AND NOZZLE SETTINGS. IF AN ANIONIC FOG SEAL IS SUPPLIED THOROUGHLY CLEAN ALL EQUIPMENT IF CATIONIC EMULSION WAS PREVIOUSLY USED.

PREPARATION OF SURFACE: ENSURE THAT THE SURFACE HAS BEEN SWEEP JUST BEFORE APPLICATION AND IS THOROUGHLY CLEAN, DRY AND FREE OF LOOSE CHIPS. REMOVE DIRT, DUST AND LOOSE CHIPS CLEANED FROM THE SURFACE AND DISPOSE OF IT OFF OF THE PROJECT.

APPLICATION OF FOG SEAL: WAIT TWO WEEKS AFTER CHIP SEAL INSTALLATION BEFORE APPLYING FOG SEAL. UNIFORMLY APPLY THE FOG SEAL WITH A DISTRIBUTOR PER THE REQUIREMENTS OF 407.06, EXCEPT AS NOTED. PRIOR TO APPLICATION, AGITATE OR GENTLY CIRCULATE THE MATERIAL.

ENSURE ALL NOZZLES AND SPRAY PATTERNS ARE IDENTICAL TO ONE ANOTHER ALONG THE DISTRIBUTOR SPRAY BAR. PLACE THE ANGLE OF THE NOZZLE AT A 15 TO 30 DEGREE ANGLE TO THE SPRAY BAR AXIS TO MAXIMIZE OVERLAP OR AS RECOMMENDED BY THE NOZZLE MANUFACTURER.

OVERLAP THE FOG SEAL BY 2 INCHES TO 6 INCHES, AT ALL ADJACENT SPRAY PASSES. OVERLAPPED AREAS MAY TAKE LONGER TO DRY.

DO NOT DILUTE THE FOG SEAL AT THE PROJECT. APPLY THE FOG SEAL AT A RATE OF 0.12-0.15 GAL/SY. RECOMMENDED APPLICATION TEMPERATURE IS 160°F TO 180°F. DO NOT EXCEED 180°F. OBTAIN THE ENGINEER'S APPROVAL FOR THE FINAL RATE OF APPLICATION, TEMPERATURE, DISTRIBUTOR SETTINGS, AND AREAS TO BE TREATED BEFORE APPLICATION OF THE FOG SEAL. THE ENGINEER WILL DETERMINE THE ACTUAL APPLICATION RATE IN GALLONS PER SQUARE YARD BY A CHECK ON THE PROJECT.

THE APPLICATION IS CONSIDERED SATISFACTORY WHEN THE MATERIAL IS APPLIED UNIFORMLY WITH NO VISIBLE EVIDENCE OF STREAKING OR RIDGING, FOG SEAL IS SEEN TO STAY IN PLACE WITH ADEQUATE BUILDUP AND LITTLE TO NO RUNOFF, AND THE APPLICATION RATE IS ±10% OF THE SPECIFIED RATE.

IF THE FOG SEAL MATERIAL IS SEEN TO BE EXCESSIVELY RUNNING OFF THE PAVEMENT, STOP PLACEMENT AND OBTAIN A SAMPLE OF THE FOG SEAL MATERIAL. IMMEDIATELY DELIVER TO OMM FOR A VISCOSITY AND RESIDUE TEST. REJECT ALL ON HAND MATERIAL THAT APPEARS TO BE OR IS TESTED TO BE OVER DELUTED: REAPPLY FOG SEAL MATERIAL THAT MEETS TRAFFIC AND MARKINGS. DO NOT RELEASE TRAFFIC ON THE FOG SEAL MATERIAL FOR A MINIMUM OF 20 MINUTES AND AS DIRECTED BY THE ENGINEER AFTER THE MATERIAL HAS BEEN DETERMINED TO BE TACK FREE AND SET. NOTE: DAMP CONDITIONS, COLD TEMPERATURES, AND SHADED AREAS WILL REQUIRE UP TO ONE HOUR FOR FOG SEAL TO BE TACK FREE.

APPLY WATER BASED WORK ZONE AND/OR WATER BASED FINAL PAVEMENT MARKINGS AFTER CURE. APPLY NON-WATER BASED PAVEMENT MARKINGS, IF REQUIRED ON THE PROJECT, TWO WEEKS AFTER FROM FOG SEAL APPLICATION. METHOD OF MEASUREMENT, THE DEPARTMENT WILL MEASURE FOG SEAL BY THE NUMBER OF GALLONS OF FOG SEAL APPLIED.

BASIS OF PAYMENT: THE DEPARTMENT WILL PAY FOR ACCEPTED QUANTITIES AT THE CONTRACT UNIT PRICE AS FOLLOWS:

ITEM	UNIT	DESCRIPTION
SPECIAL	GALLON	FOG SEAL

ITEM 690 - SPECIAL - FOG SEAL
 4418.97 SY X 0.12 GAL/SY = 530.3 GAL.

530.3 GAL. CARRIED TO THE GENERAL SUMMARY.

DESIGN AGENCY



DESIGNER
REB

REVIEWER
BJA 11/20/24

PROJECT ID
115466

SHEET	TOTAL
P.04	6

SHEET NUM.												PART.	ITEM	ITEM	GRAND	UNIT	DESCRIPTION	SEE SHEET NO.
			2		4		6		OFFICE			01/NFP/05		EXT	TOTAL			
																	ROADWAY	
					530.3							530.3	SPECIAL	69098900	530.3	GAL	SPECIAL-FOG SEAL	4
																	EROSION CONTROL	
												1,000	832	30000	1,000	EACH	EROSION CONTROL	
																	PAVEMENT	
							40					40	253	01000	40	SY	PAVEMENT REPAIR	
							4,284					4,284	422	11001	4,284	SY	AGGREGATE, SINGLE CHIP SEAL, TYPE A, AS PER PLAN	3
									1,714			1,714	422	25001	1,714	GAL	EMULSION, CHIP SEAL, AS PER PLAN	3
			12									12	617	10100	12	CY	COMPACTED AGGREGATE	
																	TRAFFIC CONTROL	
									1,500			1,500	642	30000	1,500	FT	REMOVAL OF PAVEMENT MARKING	
							450					450	642	00700	450	FT	TRANSVERSE/DIAGONAL LINE, TYPE 1	
							2					2	642	01702	2	EACH	HANDICAP SYMBOL MARKING, TYPE 1	
							1,040					1,040	642	01200	1,040	FT	PARKING LOT STALL MARKING, TYPE 1	
							4					4	642	01300	4	EACH	LANE ARROW, TYPE 1	
																	INCIDENTALS	
												LS	614	11000	LS		MAINTAINING TRAFFIC	
												LS	624	10000	LS		MOBILIZATION	

GENERAL SUMMARY

DESIGN AGENCY



DESIGNER

ANW

REVIEWER

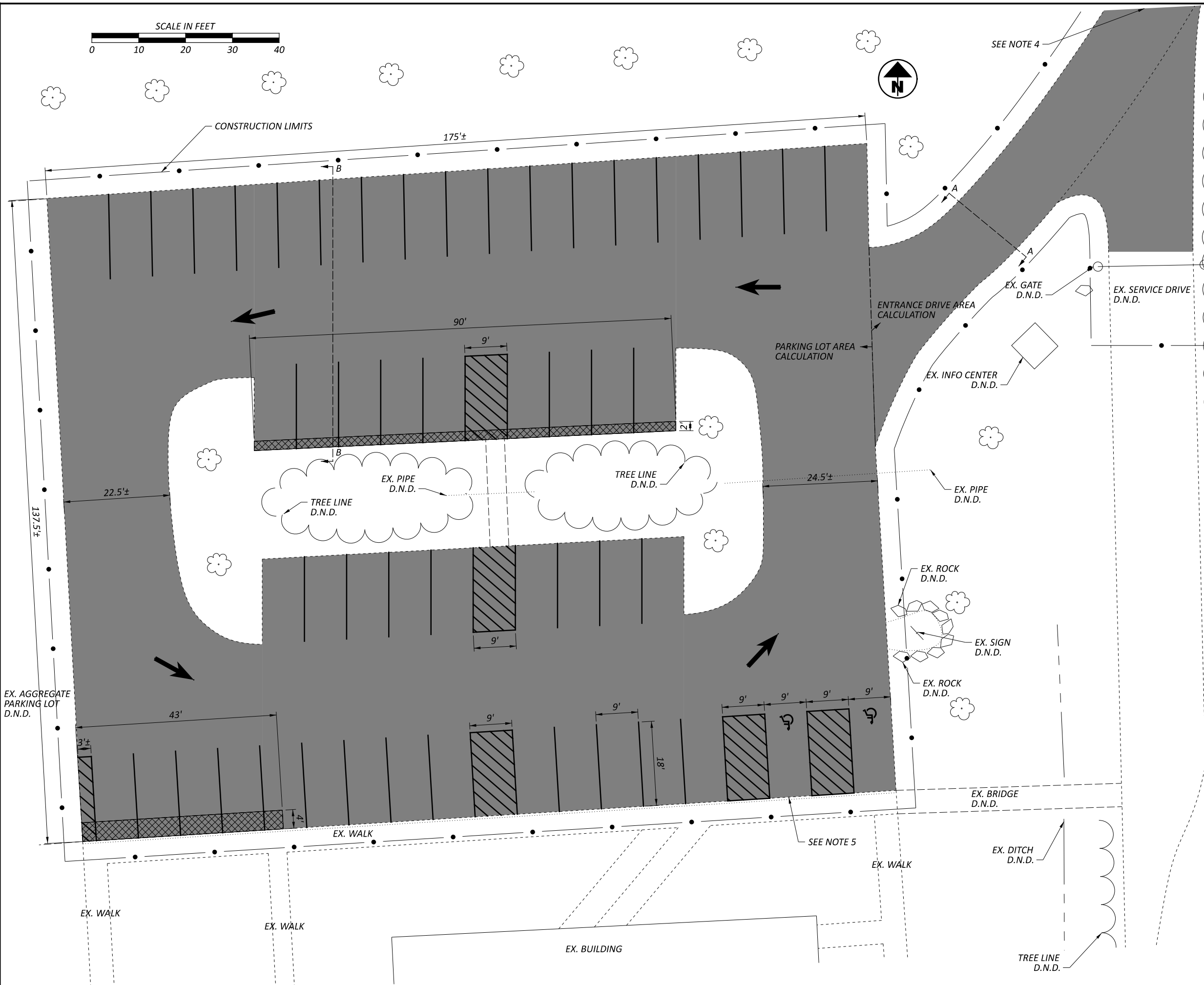
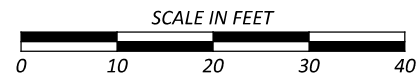
CWW 03/30/22

PROJECT ID

115466

SHEET TOTAL

P.5 6



NOTES & LEGEND

- ENTRANCE DRIVE
- ITEM 422 - AGGREGATE, SINGLE CHIP SEAL, TYPE A, AS PER PLAN (2188 SY)
- PARKING LOT
- ITEM 422 - AGGREGATE, SINGLE CHIP SEAL, TYPE A, AS PER PLAN (2231 SY)
- ITEM 253 - PAVEMENT REPAIR (40 SY)
- ITEM 642 - TRANSVERSE/DIAGONAL LINE (450 FT)
- ITEM 642 - PARKING LOT STALL MARKING (1040 FT)
- ITEM 642 - LANE ARROW (4 EACH)
- ITEM 642 - HANDICAP SYMBOL MARKING (2 EACH)

1. NO CLEARING OR GRUBBING NECESSARY
2. ALL PARKING STALLS SHOULD BE 9' x 18'
3. D.N.D. = DO NOT DISTURB
4. CHIP SEAL THE ENTRANCE DRIVE STARTING AT SR 502 AND MEETING AT THE PARKING LOT.
5. MAKE PROPOSED PARKING LOT ELEVATION FLUSH WITH THE EXISTING WALK RAMP.

PARKING LOT PLAN VIEW

DESIGN AGENCY	STATE OF OHIO DEPARTMENT OF TRANSPORTATION
DESIGNER	ANW
REVIEWER	CWW 03/30/22
PROJECT ID	115466
SHEET TOTAL	P.6 6