

N<sup>o</sup> 2051

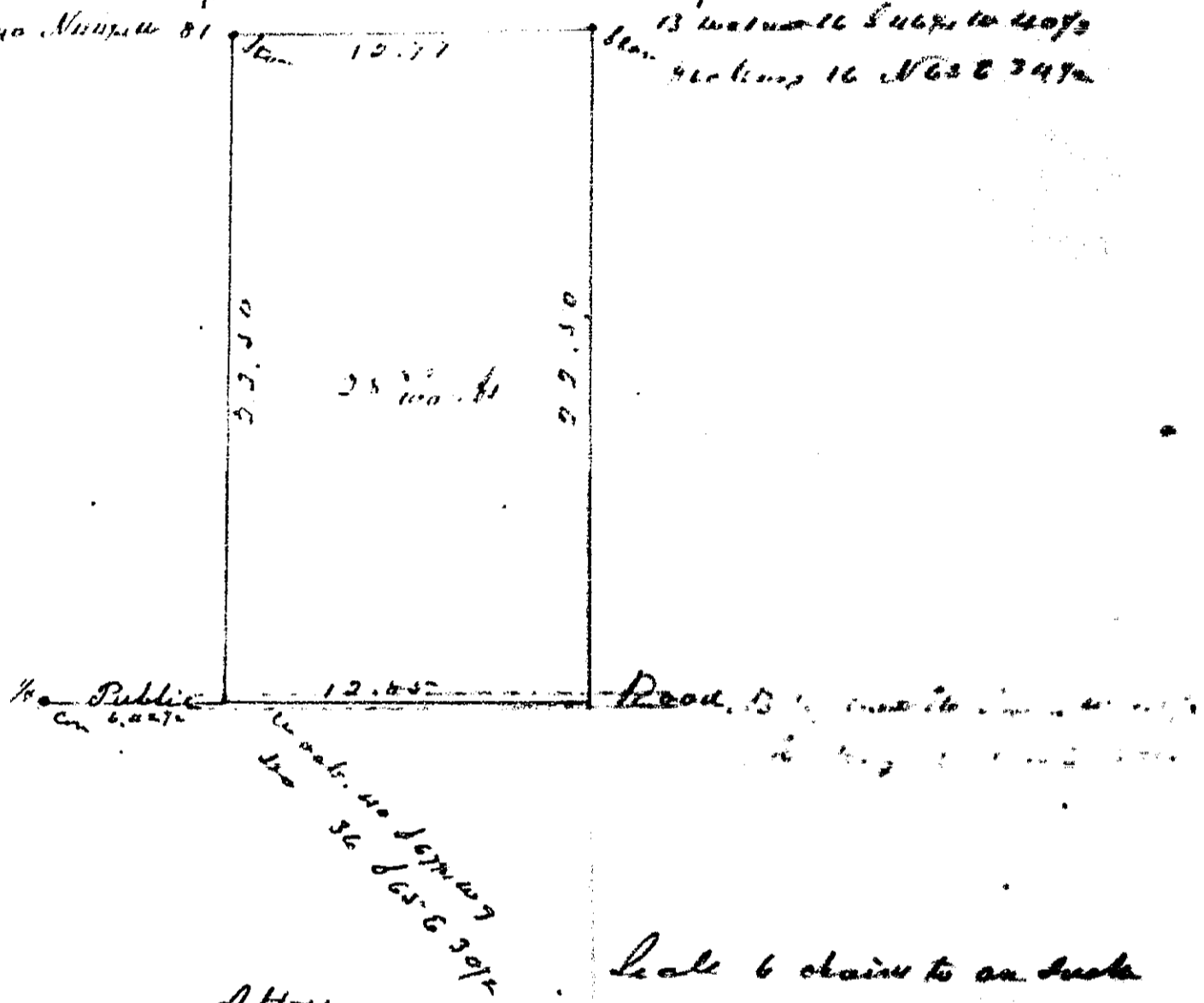
1874 April 7 At the request of David Fisher  
made a Survey of a part of the East 1/2 of Section N<sup>o</sup> 14 Town  
15 and Range 17

East  
North  
West  
South  
1/2  
1/4

East	12	85	Planted Stone in road
North	22	50	Inter <sup>y</sup> link east of old Stone
West	12	77	" 2 " South " "
South	22	80	Inter <sup>y</sup> link west

Thence returned to beginning Thence

A part of the south east 1/4 of Section N<sup>o</sup> 14 Town 15 Range 17  
located as follows



Attest

Scale 6 chains to an inch  
C. J. Williams

1874 April 7 At the request of David  
Keeley made a Survey of a part of the N. 1/4 1/4 of Section  
N<sup>o</sup> 15 Town 16 and Range 17