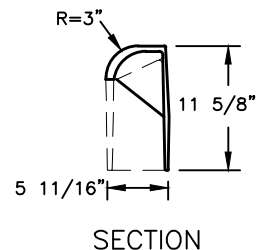
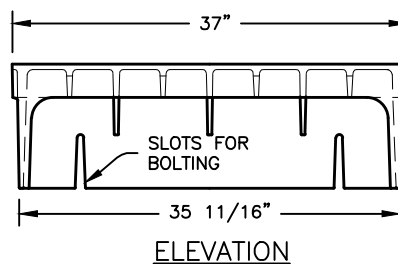
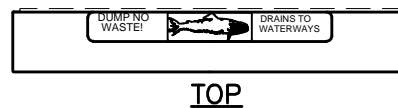


PRE-APPROVED CASTINGS:

EJ NO. - 7031, 7032 WITH Z1 FRAME, M4 GRATE & T6 BACK

NEENAH NO. - 3295-2 WITH TYPE V GRATE OR
(R-32900022 TYPE "N" SQUARE BACK)



**STANDARD CATCH BASIN
ADJUSTABLE BACK**

APPROX. WEIGHT = 79LBS.

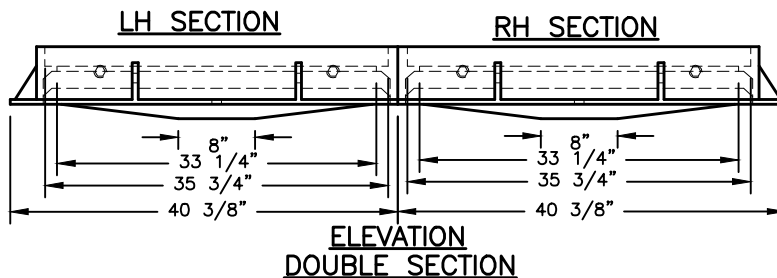
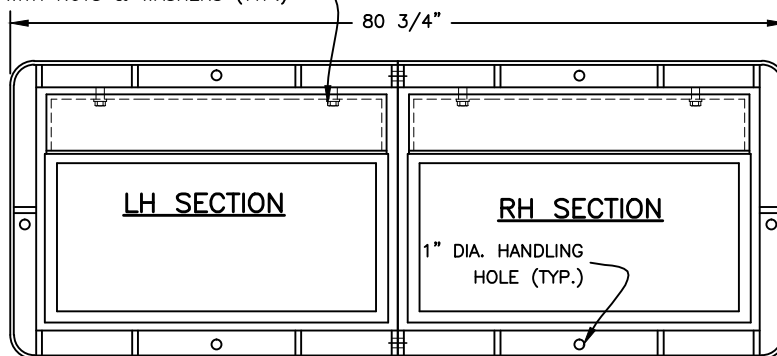
NOTE:

1. CURB ADJUSTMENT 6" TO 11".
2. FOR GRANITE OR OTHER SQUARE CURB SECTIONS A SQUARE BACK CASTING WITH AN ENVIRONMENTAL NOTICE OR MOUNT PLATE SHALL BE USED.

CURB GRATING

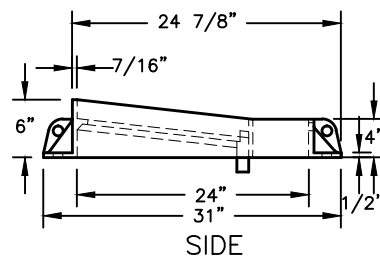
APPROX. WEIGHT = 138LBS.

5/8"-HEX STAINLESS STEEL
WITH NUTS & WASHERS (TYP.)



NOTES:

1. FRAMES, GRATES & COVERS, SHALL MEET REQUIREMENTS OF 604.02 & AASHTO M306.
2. SEE SHEETS AA-S125A, B, AND C FOR MULTIPLE CATCH BASIN CONFIGURATIONS.
3. LEFT, RIGHT, & CENTER FRAME SECTIONS PROVIDED BY MANUFACTURER.



CITY OF COLUMBUS, OHIO
DEPARTMENT OF PUBLIC UTILITIES
DIVISION OF SEWERAGE & DRAINAGE

CAST IRON FRAME
AND GRATE FOR CURB
& GUTTER INLET
(HEAVY DUTY)

STANDARD DRAWING
AA-S128

REVISED 8/8/14

PAGE

2

2

SSS MANAGER

John J. Newson