

Lockbourne Rd & London-Groveport Rd (SR 317) Roundabout

GPS 39.831092 -82.972762

2 flat from existing

Place new 288 armored fiber to existing splice case at 39.831535 -82.965046
to new splice case at 39.825168 -82.973176. (approx. 4,800')

At new SCP pole at 39.83152 -82.97057 place fiber down pole to new 3" conduit.

Pull thru 3" conduit to new HH at 39.83077 -82.97243.

At HH place 200' slack loop.

Supply new Hand Hole.(30"x48")

Riser up new SCP pole at 39.82934 -82.97289.

Place new splice case at 39.825168 -82.973176

Place slack loop at

1- 39.831625 -82.967347

2- 39.827337 -82.973028

After splicing is complete wreck out old fiber. Wreck out old strand from riser to riser.

Clearcreek Valley will trench and place in the new 3" conduit and place Hand Hole.



Place 200' slack loop in HH.

Place slack loop at
39.827337 -82.973028

Place new splice case at
39.825168 -82.973176

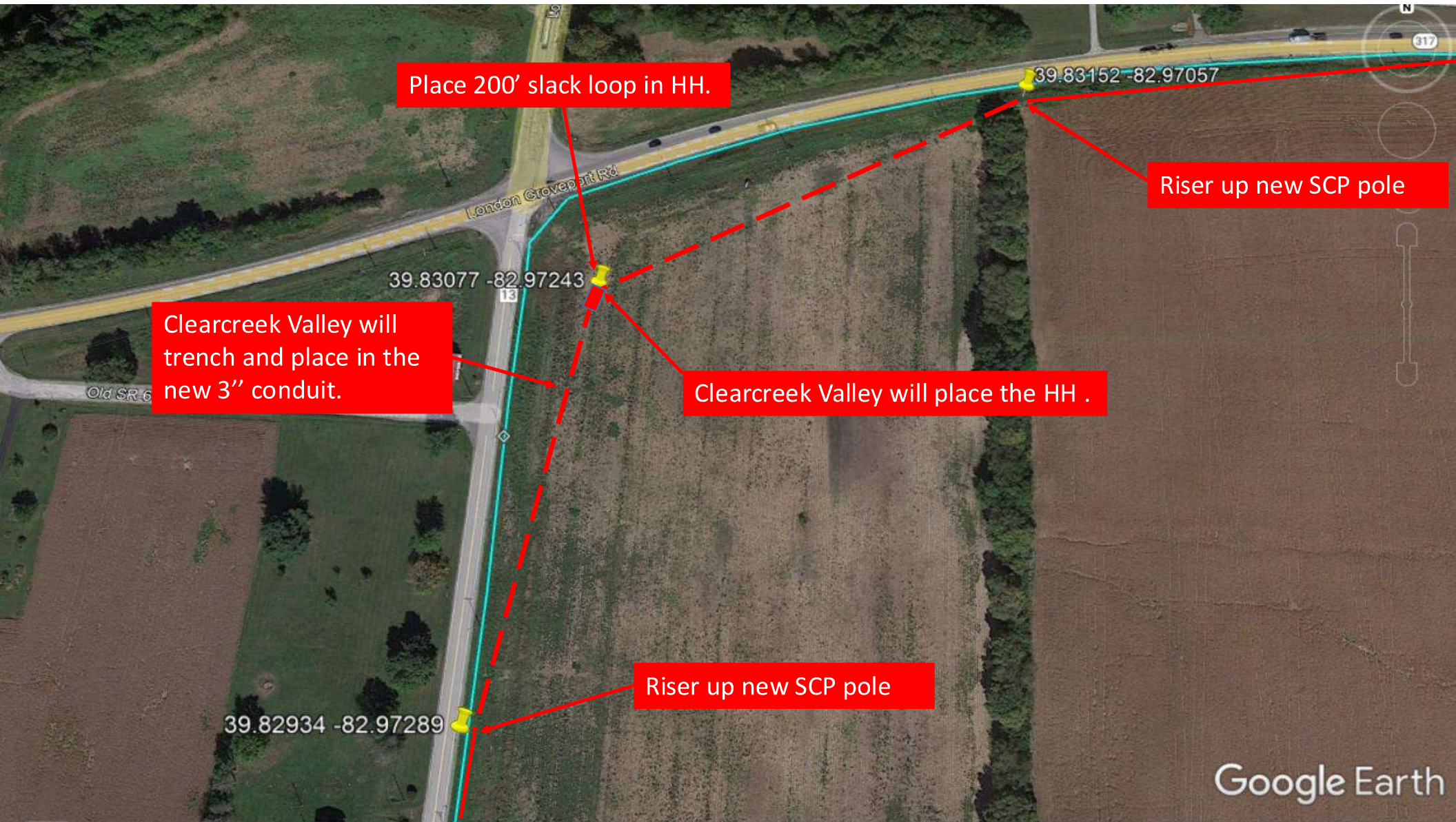
OH-317 & Lockbourne Rd

Place slack loop at
39.831625 -82.967347

Place new 288 armored fiber
to existing splice case at
39.831535 -82.965046

THREE CORNERS

Google Earth



Place 200' slack loop in HH.

Clearcreek Valley will trench and place in the new 3" conduit.

Clearcreek Valley will place the HH .

Riser up new SCP pole

Riser up new SCP pole

Google Earth