

## SR 317 and Shook Rd relocate GPS – 39.830610 -82.944567

Place new 288 armored fiber areial from 39.830716 -82.946965  
To existing splice case at 39.840052 -82.943922 ( approx. 4,900')

Place new splice case at 39.830716 -82.946965

Place new strand from SCP pole at 39.830549 -82.945560

Place new strand to SCP pole at 39.830538 -82.944695

Place new 288 armored fiber to strand and go north. Then to SCP pole's to 39.832304 -82.944336

Cross Shook rd to SCP pole at 39.832366 -82.944538.

Place new ring cut splice case at 39.831046 -82.944435. Place existing 48 into new ring cut splice case.

Place 288 armored fiber to existing splice case at 39.840052 -82.943922

Place slack loop at 39.836397 -82.944211

Place anchor and down guy where needed.

Wreck out old HH at 39.830552 -82.944699

After splicing is complete wreck out old fiber and strand.

Place new 288 armored fiber to existing splice case at 39.840052 -82.943922

Place new slack loop at 39.836397 -82.944211

SP. RICHARDS COMPANY

Cross Shook Rd SCP pole at 39.832366 -82.944538

Place new splice case at 39.830716 -82.946965

Place new strand and 288 armored fiber to 39.832304 -82.944336

Place 288 armored on strand then go north.

OH-317 & Shook Rd

Google Earth





Cross Shook Rd to SCP pole  
at 39.832366 -82.944538

This is an aerial map of a road area. A red line traces a path from a building on the left, across a road, and then along a grassy area. A red dot marks a specific location on the road. A red line also extends from a building on the right towards the same red dot. A red line connects the red dot to a text box on the left. Another red line connects a text box on the right to the red dot. A third red line connects a text box at the bottom to the red dot. The road is labeled 'Shook Rd' in two places. There are several buildings on the left and right sides of the road. A grassy area is in the center. A parking lot with several cars is at the bottom right. The map is overlaid with a grid of latitude and longitude coordinates. The text boxes are red with white text. The red line is a solid line. The red dot is a small circle. The road is a grey line. The buildings are grey and black shapes. The grass is green. The sky is blue. The map is a satellite image.

Place new strand and 288  
armored fiber to SCP pole at  
39.832304 -82.944336

Place new ring cut splice  
case at  
39.831046 -82.944435



Place new splice case at  
39.830716 -82.946965

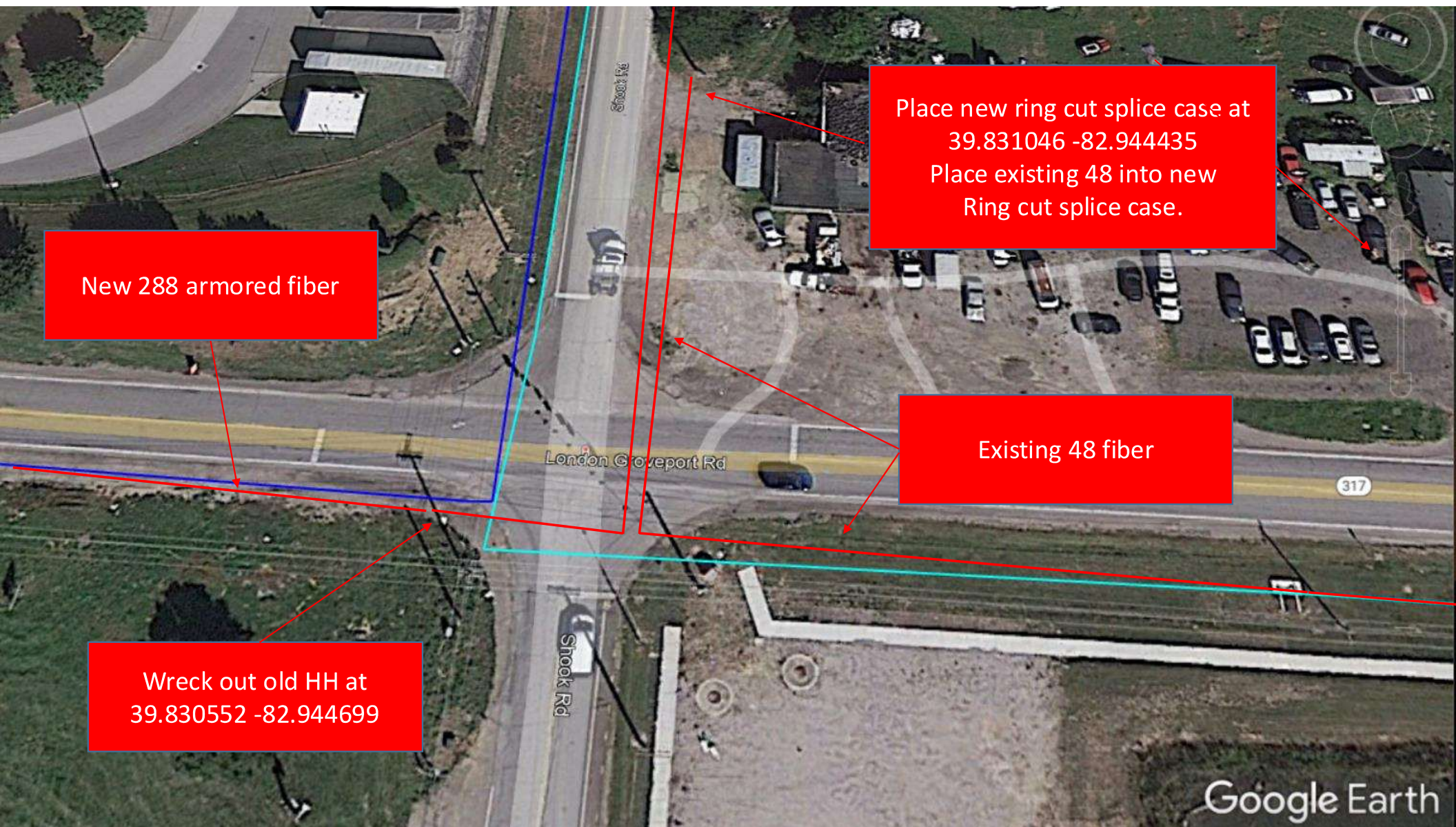
Place new strand and 288  
armored fiber to SCP pole at  
39.830549 -82.945560

Place 288 armore  
then go north.

Place new strand and 288  
armored fiber to SCP pole at  
39.830538 -82.944695







New 288 armored fiber

Place new ring cut splice case at  
39.831046 -82.944435  
Place existing 48 into new  
Ring cut splice case.

Existing 48 fiber

Wreck out old HH at  
39.830552 -82.944699

Google Earth