

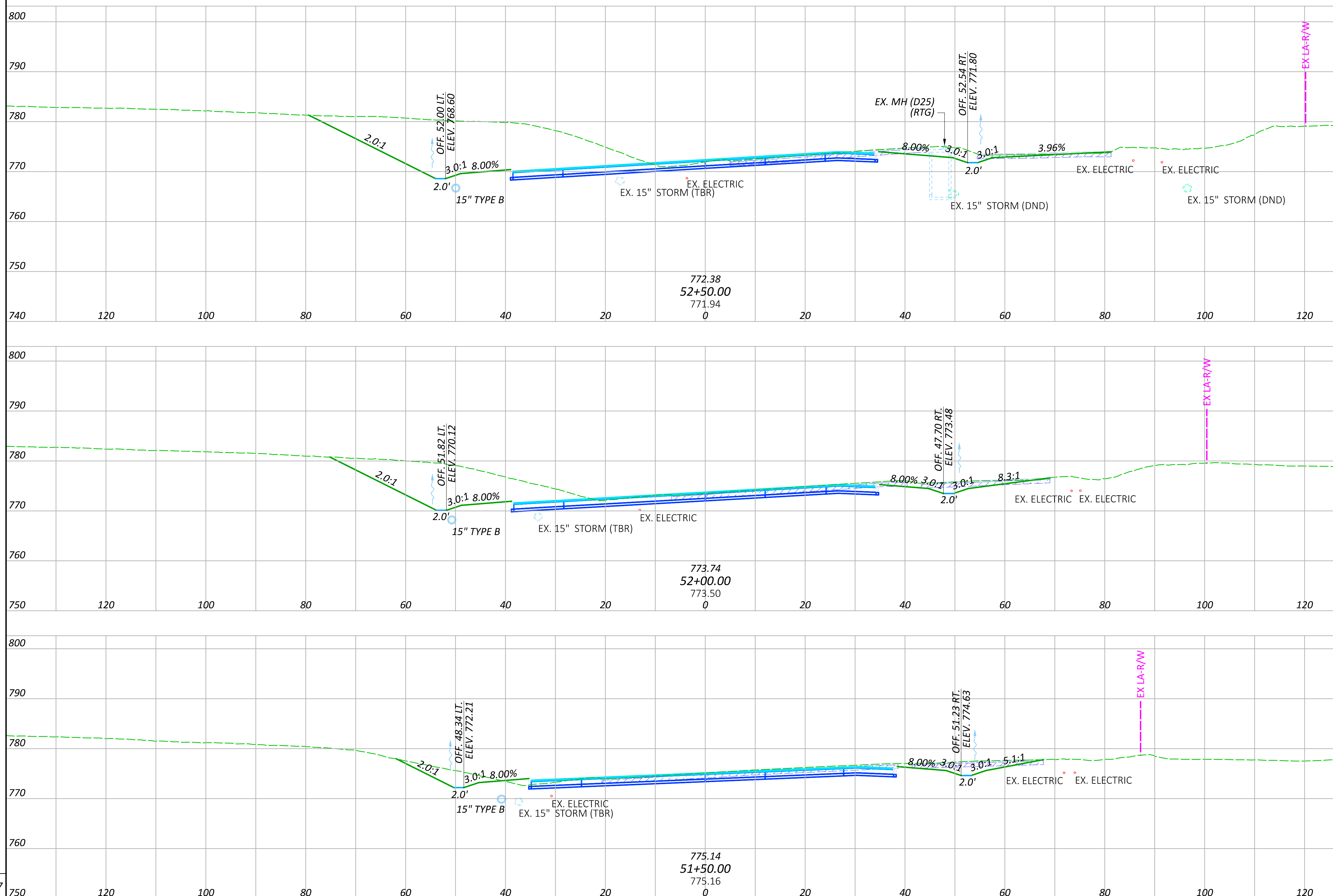
SHEET NUMBER											PART.	ITEM	ITEM	GRAND	UNIT	DESCRIPTION	SEE SHEET NO.
OFFICE	P.12	P.28	P.41	P.42	P.44						01/SAF/03	EXT	TOTAL				
	LS		7,338								LS	201	11000	LS		ROADWAY	
			1,398								7,338	202	23000	7,338	SY	CLEARING AND GRUBBING	
			3,419								1,398	202	30700	1,398	FT	PAVEMENT REMOVED	
			671								3,419	202	32000	3,419	FT	CONCRETE BARRIER REMOVED	
											671	202	32800	671	SY	CURB REMOVED	
			972								972	202	35100	972	FT	CONCRETE SLOPE PROTECTION REMOVED	
			1,183								972	202	38000	1,183	FT	PIPE REMOVED, 24" DIAMETER AND UNDER	
			2								1,183	202	47800	2	EACH	GUARDRAIL REMOVED	
			3								2	202	58100	3	EACH	IMPACT ATTENUATOR REMOVED	
			15								3	202	58200	15	EACH	CATCH BASIN REMOVED	
											15	202	58200	15	EACH	INLET REMOVED	
											1	202	58400	1	EACH	INLET ABANDONED	
	300										300	SPECIAL	20270110	300	FT	PIPE CLEANOUT, 24" AND UNDER	P.12
			110								110	202	75000	110	FT	FENCE REMOVED	
14,574											14,574	203	10000	14,574	CY	EXCAVATION	
770											770	203	20000	770	CY	EMBANKMENT	
9,844											9,844	204	10000	9,844	SY	SUBGRADE COMPACTION	
	5										5	204	45000	5	HOUR	PROOF ROLLING	
				138							138	606	15100	138	FT	GUARDRAIL, TYPE MGS WITH LONG POSTS	
				1							1	606	26550	1	EACH	ANCHOR ASSEMBLY, MGS TYPE T	
				1							1	606	35102	1	EACH	MGS BRIDGE TERMINAL ASSEMBLY, TYPE 2	
				1							1	606	60022	1	EACH	IMPACT ATTENUATOR, TYPE 2 (UNIDIRECTIONAL) 62 mph, 69" WIDTH (MASH 2016)	
				50							50	607	23000	50	FT	FENCE, TYPE CLT	
				9							9	608	10000	9	SF	4" CONCRETE WALK	
				1,476							1,476	622	10160	1,476	FT	CONCRETE BARRIER, SINGLE SLOPE, TYPE D	
				3							3	622	25000	3	EACH	CONCRETE BARRIER END SECTION, TYPE D	
				21							21	622	25050	21	EACH	CONCRETE BARRIER, END ANCHORAGE, REINFORCED, TYPE D	
				2							2	622	25051	2	EACH	CONCRETE BARRIER, END ANCHORAGE, REINFORCED, TYPE D, AS PER PLAN	P.89
											LS	SPECIAL	69098400	LS		SURVEY CONTROL VERIFICATION	P.12
											LS	878	25000	LS		INSPECTION AND COMPACTION TESTING OF UNBOUND MATERIALS	
																<b>EROSION CONTROL</b>	
				368							368	601	21000	368	SY	CONCRETE SLOPE PROTECTION	
	1										1	659	00100	1	EACH	SOIL ANALYSIS TEST	
	830										830	659	00300	830	CY	TOPSOIL	
	7,481										7,481	659	00520	7,481	SY	SEEDING AND MULCHING, CLASS 3A	
	374										374	659	14000	374	SY	REPAIR SEEDING AND MULCHING	
	374										374	659	15000	374	SY	INTER-SEEDING	
	3										3	659	20000	3	TON	COMMERCIAL FERTILIZER	
	2										2	659	31000	2	ACRE	LIME	
	46										46	659	35000	46	MGAL	WATER	
	0.02										0.02	659	40000	0.02	MSF	MOWING	
											783	670	00720	783	SY	DITCH EROSION PROTECTION MAT, TYPE B	
											LS	832	15000	LS		STORM WATER POLLUTION PREVENTION PLAN	P.1
											LS	832	15002	LS		STORM WATER POLLUTION PREVENTION INSPECTIONS	P.1
											LS	832	15010	LS		STORM WATER POLLUTION PREVENTION INSPECTION SOFTWARE	P.1
											50,000	832	30000	50,000	EACH	EROSION CONTROL	P.1
																<b>DRAINAGE</b>	
			569								569	605	05110	569	FT	4" SHALLOW PIPE UNDERDRAINS WITH GEOTEXTILE FABRIC (12" DEPTH)	
			1,905								1,905	605	05110	1,905	FT	4" SHALLOW PIPE UNDERDRAINS WITH GEOTEXTILE FABRIC (18" DEPTH)	
			846								846	605	05110	846	FT	4" SHALLOW PIPE UNDERDRAINS WITH GEOTEXTILE FABRIC (30" DEPTH)	
	100										100	605	05200	100	FT	4" UNCLASSIFIED PIPE UNDERDRAINS	
											2,383	605	06020	2,383	FT	4" BASE PIPE UNDERDRAINS WITH GEOTEXTILE FABRIC (18" DEPTH)	
											320	605	06020	320	FT	4" BASE PIPE UNDERDRAINS WITH GEOTEXTILE FABRIC (6" DEPTH)	
	100										100	611	00406	100	FT	4" CONDUIT, TYPE F	
											331	611	00410	331	FT	4" CONDUIT, TYPE F FOR UNDERDRAIN OUTLET	
											141	611	04400	141	FT	12" CONDUIT, TYPE B	
											9	611	04600	9	FT	12" CONDUIT, TYPE C	
											374	611	05900	374	FT	15" CONDUIT, TYPE B	
											251	611	06100	251	FT	15" CONDUIT, TYPE C	
											73	611	07400	73	FT	18" CONDUIT, TYPE B	

GENERAL SUMMARY

DESIGN AGENCY  
  
 ms consultants, inc.  
 DESIGNER  
**ACW**  
 REVIEWER  
 TAZ 11/30/25  
 PROJECT ID  
 123987  
 SHEET TOTAL  
 P.36 | 122



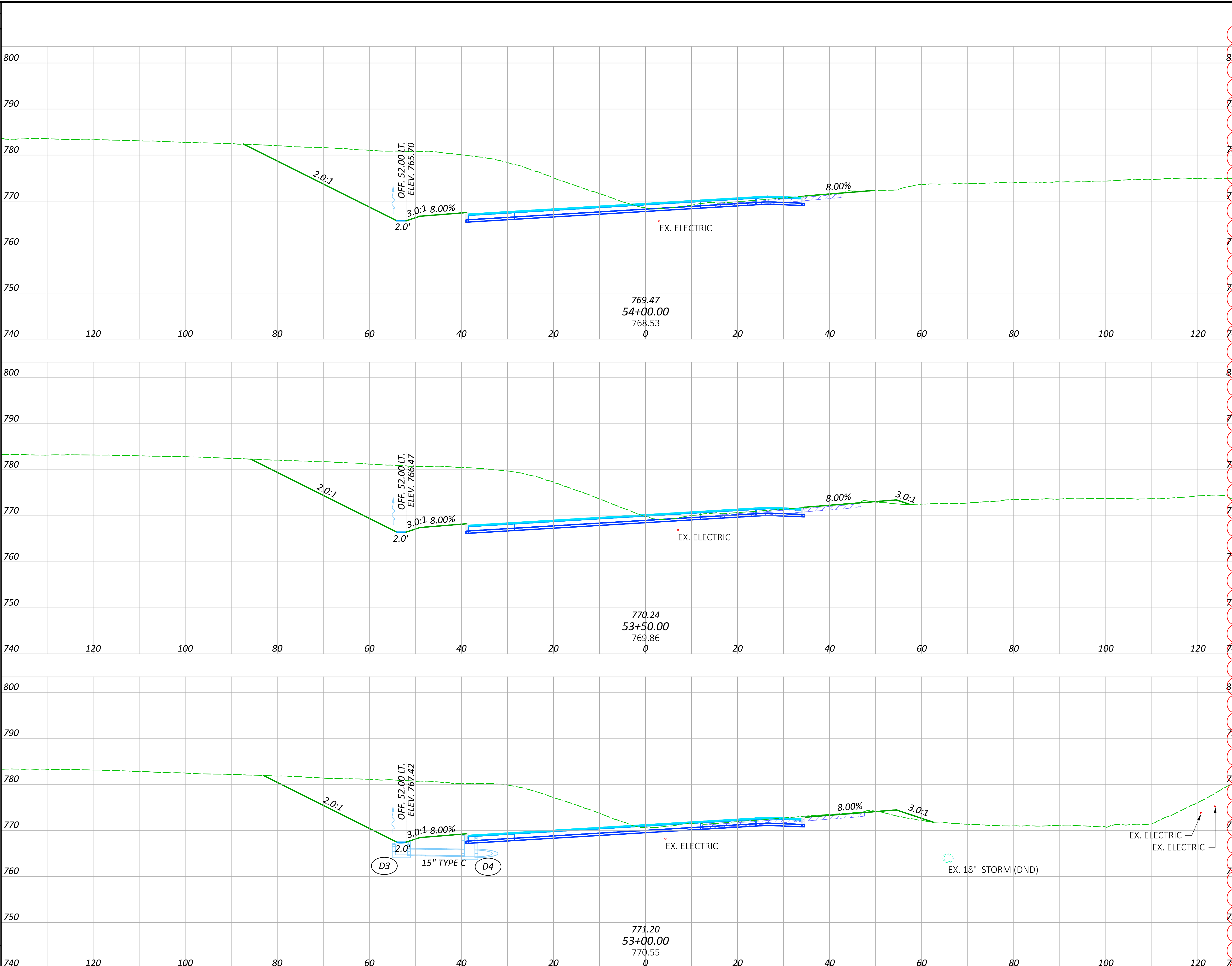
SEEDING	END AREA		VOLUME	
	CUT	FILL	CUT	FILL
91			566	16
457			840	21
74			842	7
367			430	13
58			122	7
293			202	23
<b>SHEET TOTAL</b>	<b>1117</b>		<b>1472</b>	<b>57</b>



**CROSS SECTIONS - RAMP Y**  
**STA. 51+50.00 TO STA. 52+50.00**

DESIGN AGENCY  
  
 ms consultants, inc.  
 DESIGNER  
 CLH  
 REVIEWER  
 TAZ 09/24/25  
 PROJECT ID  
 123987  
 SHEET TOTAL  
 P.54 | 122

SEEDING	SEEDING	
	END WIDTH	SQ. YDS.
68		
74		
76		
<b>SHEET TOTAL</b>	<b>1273</b>	

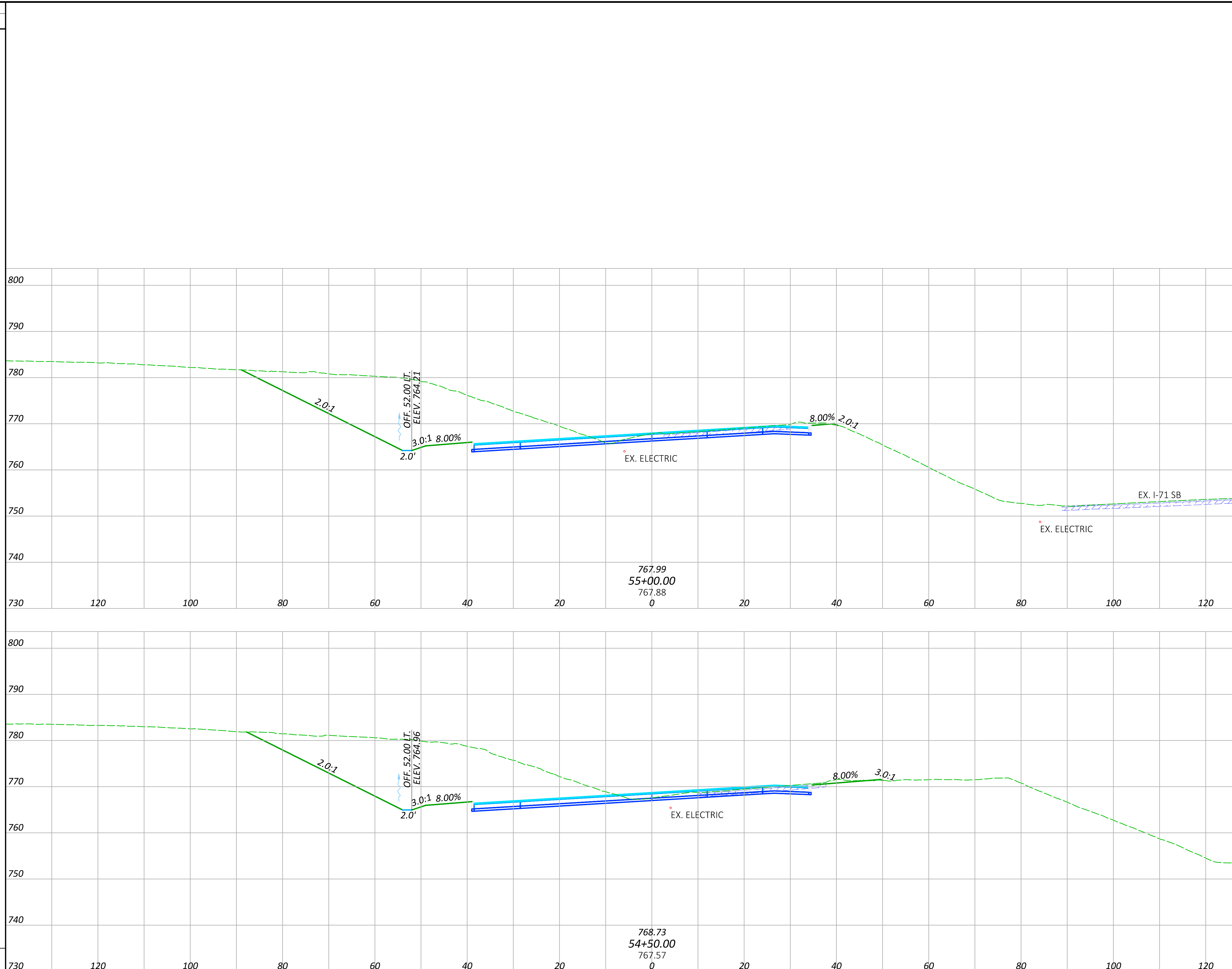


END AREA	VOLUME	
	CUT	FILL
793	9	
1478	23	
803	16	
1407	33	
717	19	
1188	33	
<b>SHEET TOTALS</b>	<b>4073</b>	<b>89</b>

**CROSS SECTIONS - RAMP Y**  
**STA. 53+00.00 TO STA. 54+00.00**

DESIGN AGENCY  
  
 ms consultants, inc.  
 DESIGNER  
 CLH  
 REVIEWER  
 TAZ 09/24/25  
 PROJECT ID  
 123987  
 SHEET TOTAL  
 P.55 | 122

SEEDING	
END WIDTH	SQ. YDS.
60	
357	
69	
378	
<b>SHEET TOTAL</b>	<b>735</b>

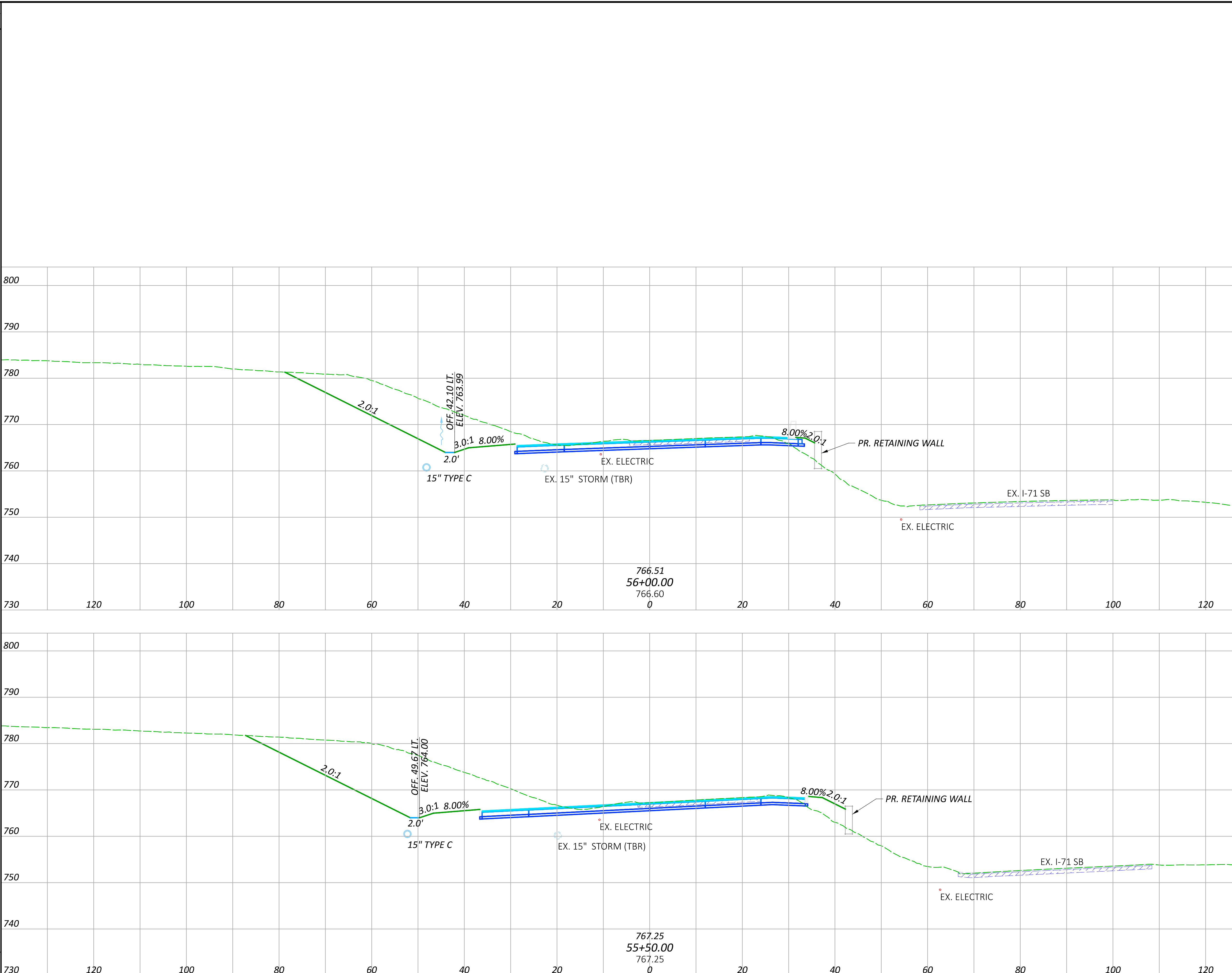


END AREA	VOLUME	
	CUT	FILL
591	0	
1323	3	
738	3	
1418	11	
<b>SHEET TOTALS</b>	<b>2741</b>	<b>14</b>

**CROSS SECTIONS - RAMP Y**  
**STA. 54+50.00 TO STA. 55+00.00**

DESIGN AGENCY  
  
 ms consultants - inc.  
 DESIGNER  
 CLH  
 REVIEWER  
 TAZ 09/24/25  
 PROJECT ID  
 123987  
 SHEET TOTAL  
 P.56 122

SEEDING	END AREA		VOLUME	
	CUT	FILL	CUT	FILL
END WIDTH				
SQ. YDS.				
61				
355				
67				
352				
SHEET TOTAL	707			

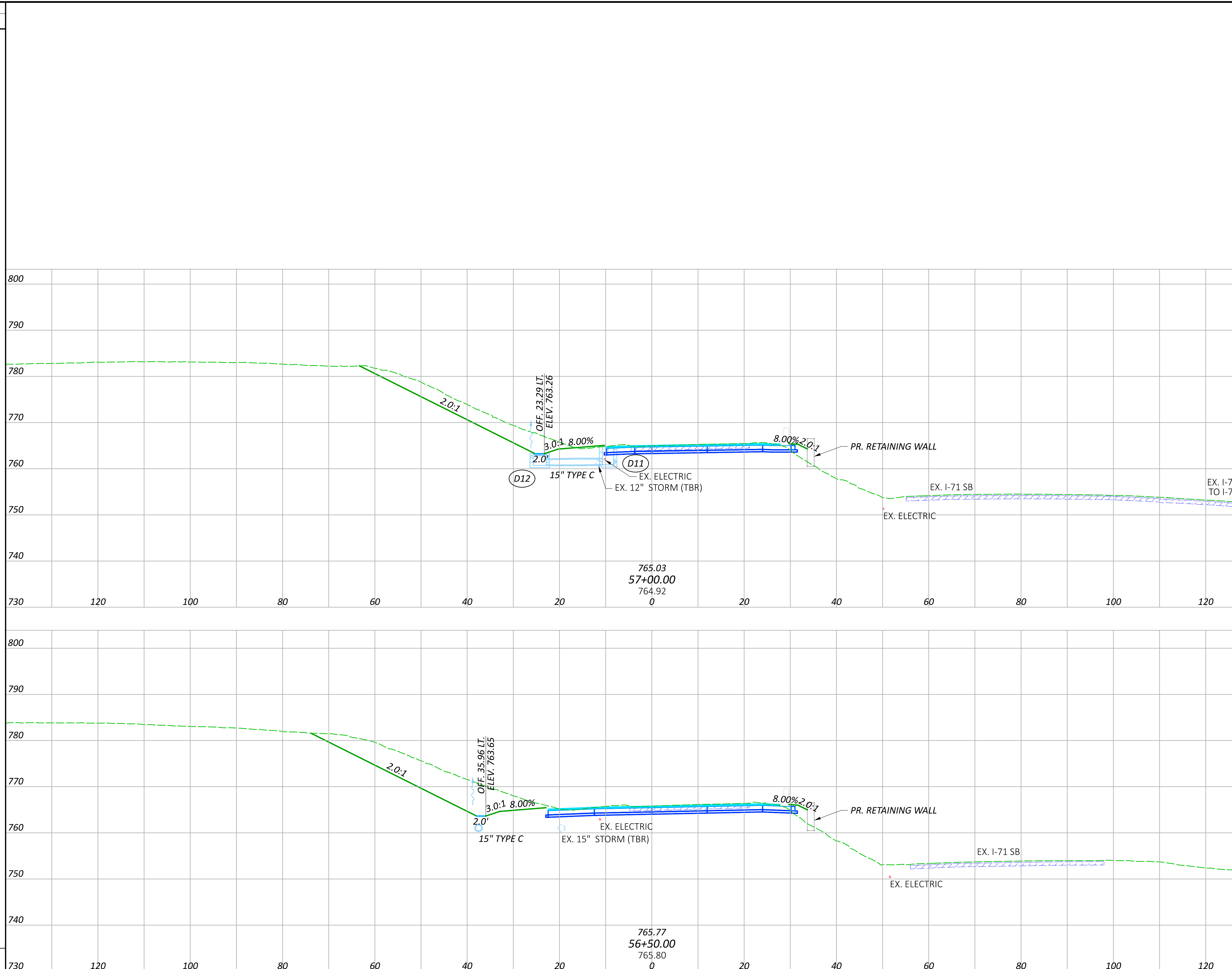


SEEDING	END AREA		VOLUME	
	CUT	FILL	CUT	FILL
61				
355				
67				
352				
SHEET TOTAL	707			

**CROSS SECTIONS - RAMP Y**  
 STA. 55+50.00 TO STA. 56+00.00

DESIGN AGENCY	
DESIGNER	
REVIEWER	CLH
PROJECT ID	TAZ 09/24/25
SHEET TOTAL	123987
P.57	122

SEEDING	
END WIDTH	SQ. YDS.
65	
354	
63	
344	
<b>SHEET TOTAL</b>	<b>698</b>

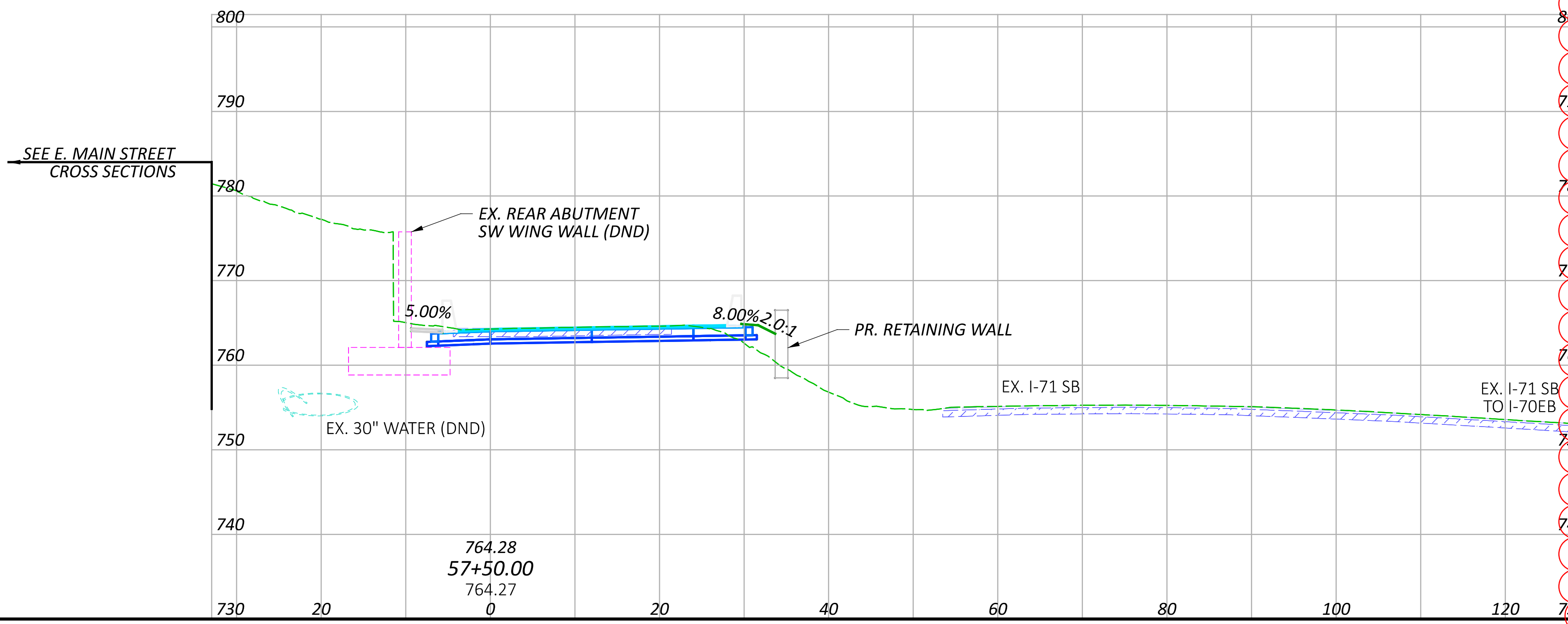
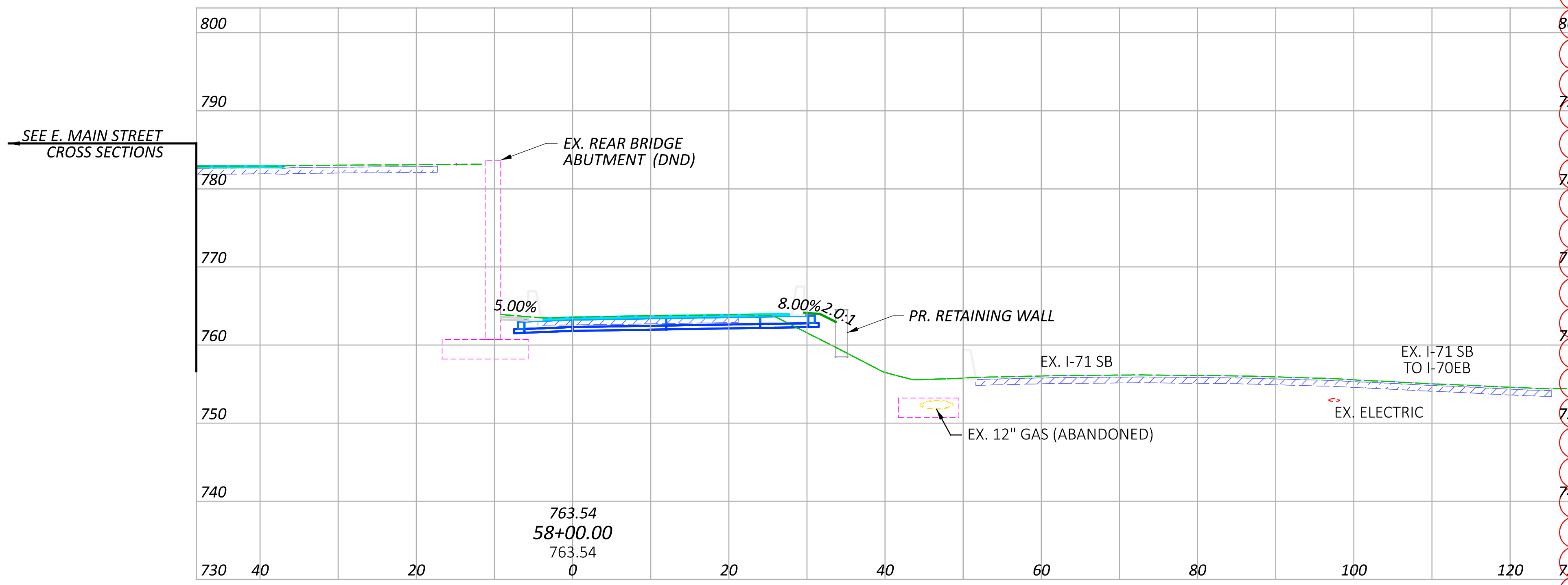


END AREA		VOLUME	
CUT	FILL	CUT	FILL
176	8		
436	13		
295	6		
534	15		
<b>SHEET TOTALS</b>	<b>1070</b>	<b>28</b>	

**CROSS SECTIONS - RAMP Y**  
**STA. 56+50.00 TO STA. 57+00.00**

DESIGN AGENCY	
DESIGNER	
REVIEWER	CLH
PROJECT ID	TAZ 09/24/25
	123987
<b>SHEET TOTAL</b>	<b>P.58   122</b>

SEEDING	
END WIDTH	SQ. YDS.
4	23
4	192
<b>SHEET TOTAL</b>	<b>215</b>

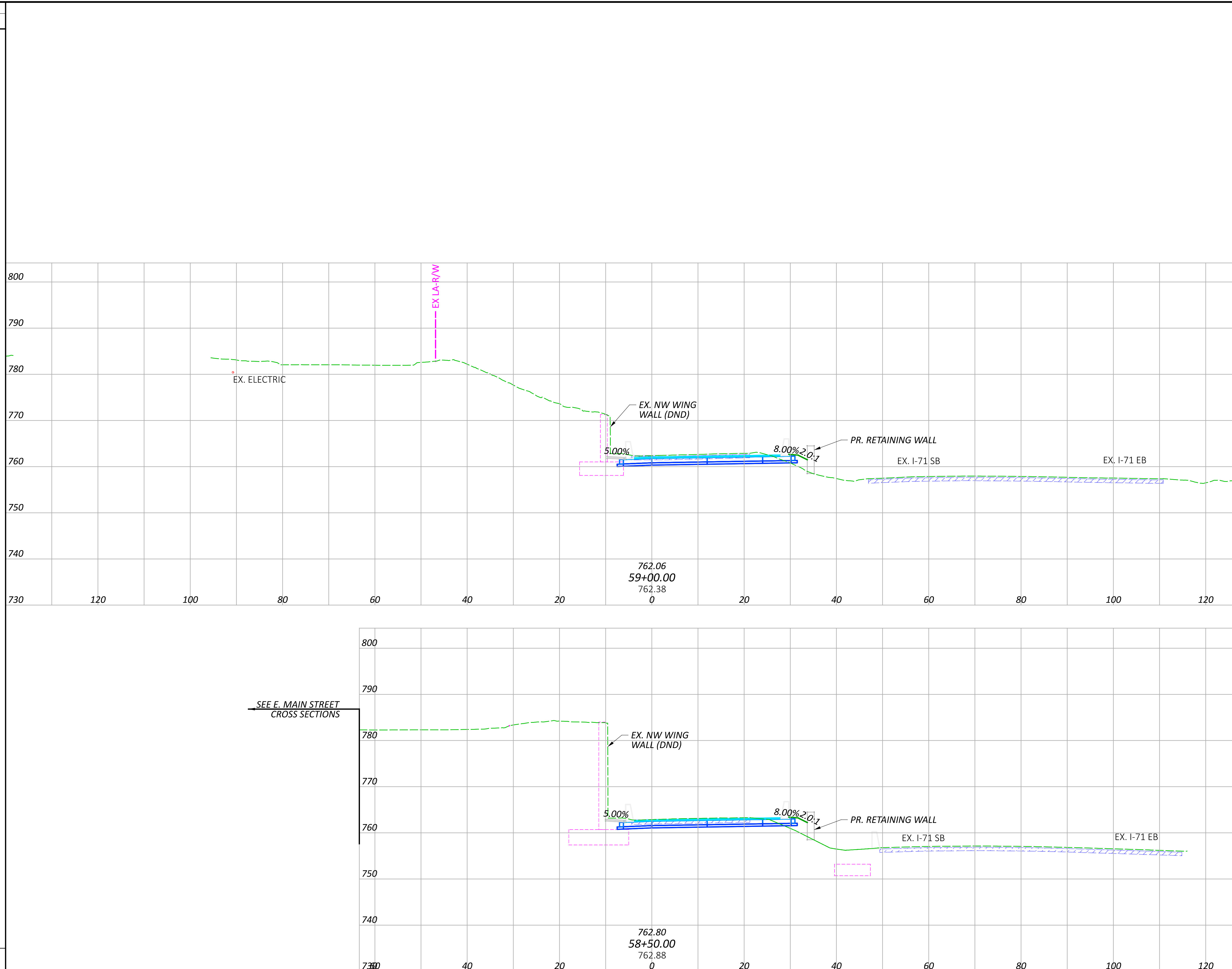


END AREA		VOLUME	
CUT	FILL	CUT	FILL
37	19		
		70	25
		39	8
		199	15
<b>SHEET TOTALS</b>		<b>269</b>	<b>40</b>

CROSS SECTIONS - RAMP Y  
 STA. 57+50.00 TO STA. 58+00.00

DESIGN AGENCY  
  
 ms consultants, inc.  
 DESIGNER  
 CLH  
 REVIEWER  
 TAZ 09/24/25  
 PROJECT ID  
 123987  
 SHEET TOTAL  
 P.59 | 122

SEEDING	SEEDING	
	END WIDTH	SO. YDS.
4		
24		
4		
23		
SHEET TOTAL	47	

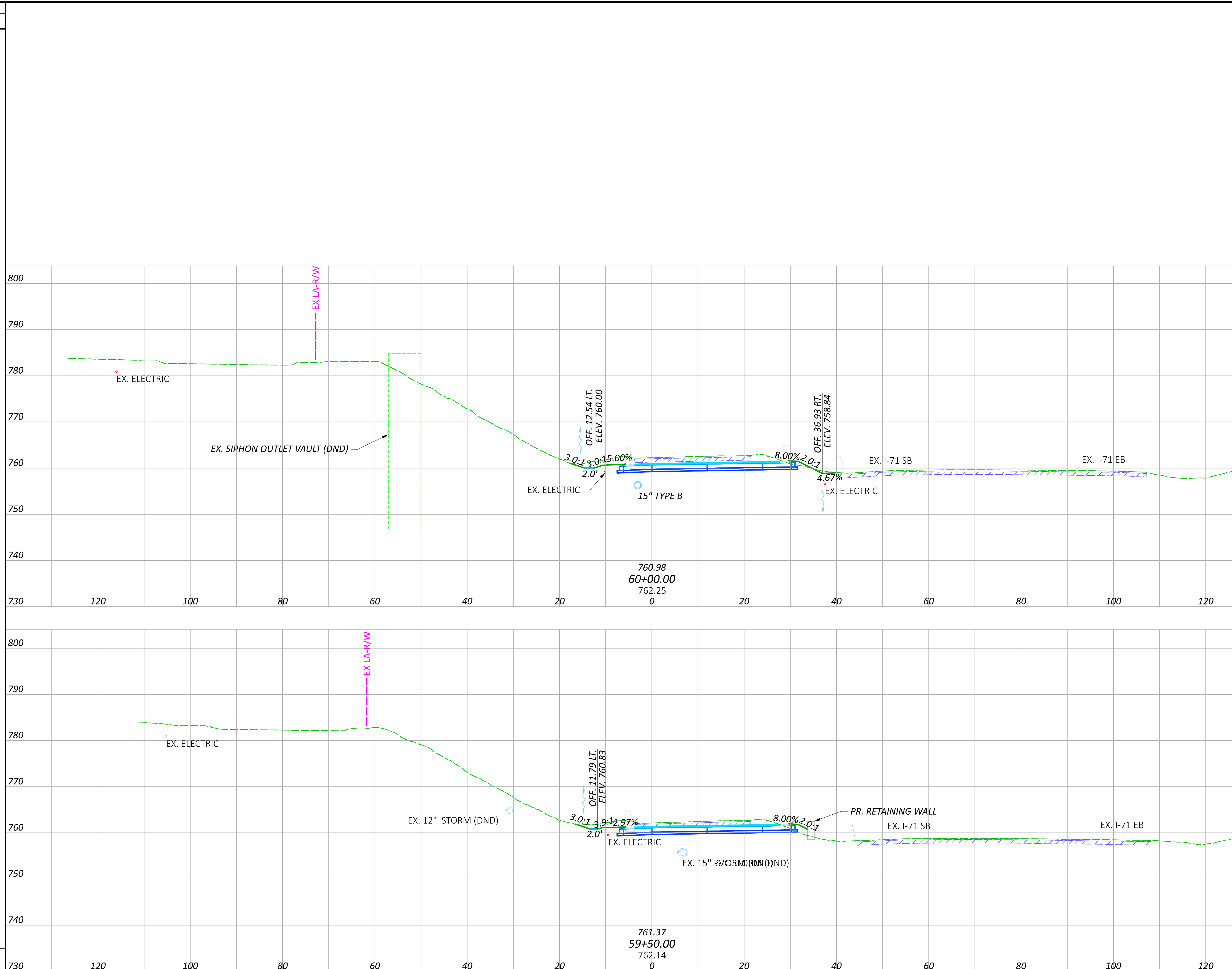


END AREA	END AREA		VOLUME	VOLUME	
	CUT	FILL		CUT	FILL
59		6			
101		13			
50		8			
81		25			
SHEET TOTALS	182	38			

**CROSS SECTIONS - RAMP Y**  
 STA. 58+50.00 TO STA. 59+00.00

DESIGN AGENCY	
DESIGNER	
REVIEWER	CLH
PROJECT ID	TAZ 09/24/25
	123987
SHEET TOTAL	P.60   122

SEEDING	END AREA		VOLUME	
	CUT	FILL	CUT	FILL
23				
115				
18				
62				
SHEET TOTAL	177			

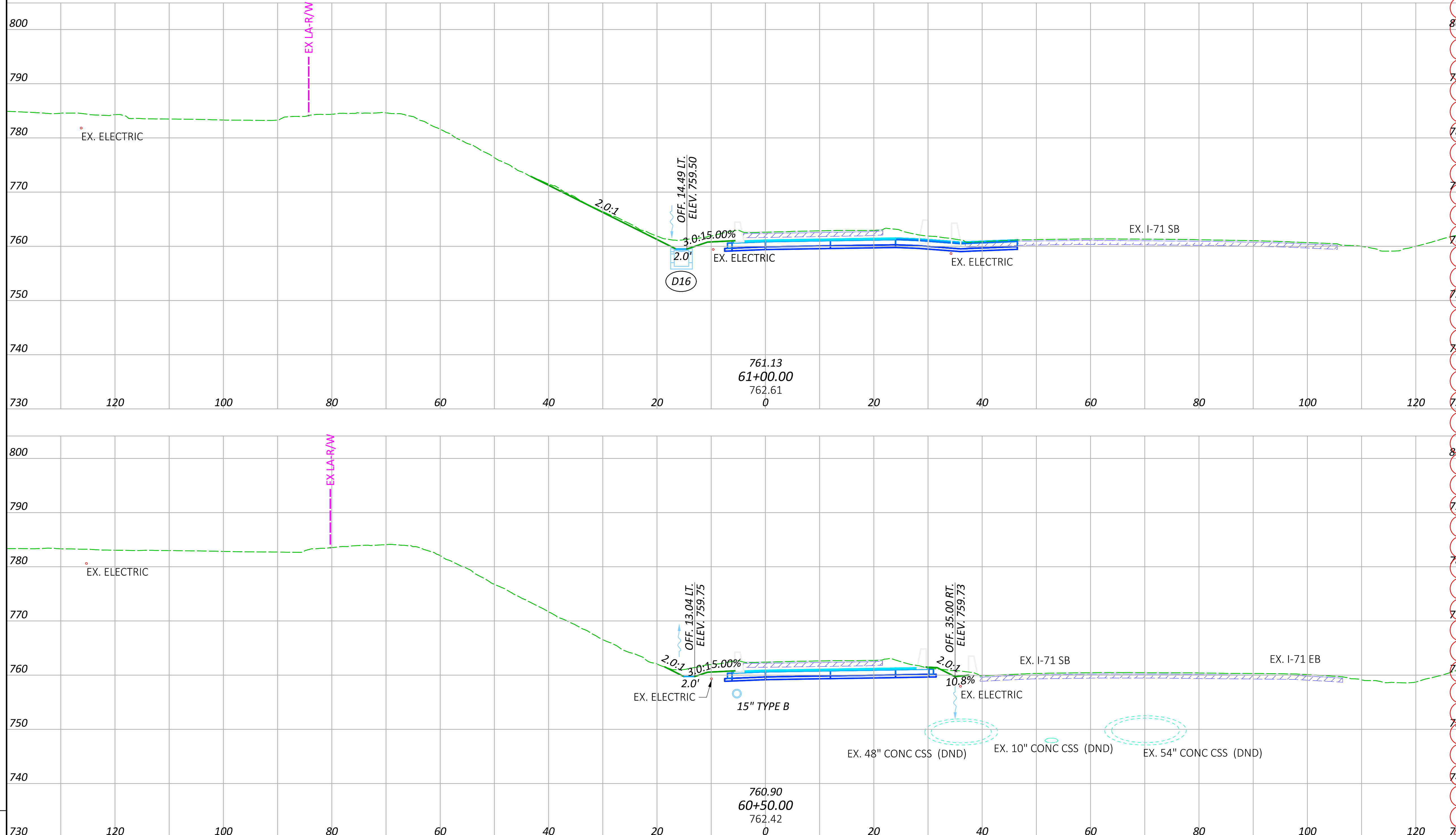


END AREA	VOLUME	
	CUT	FILL
101	1	
167	4	
80	3	
128	9	
SHEET TOTALS	295	13

CROSS SECTIONS - RAMP Y  
 STA. 59+50.00 TO STA. 60+00.00

DESIGN AGENCY  
  
 ms consultants, inc.  
 DESIGNER  
 CLH  
 REVIEWER  
 TAZ 09/24/25  
 PROJECT ID  
 123987  
 SHEET TOTAL  
 P.61 122

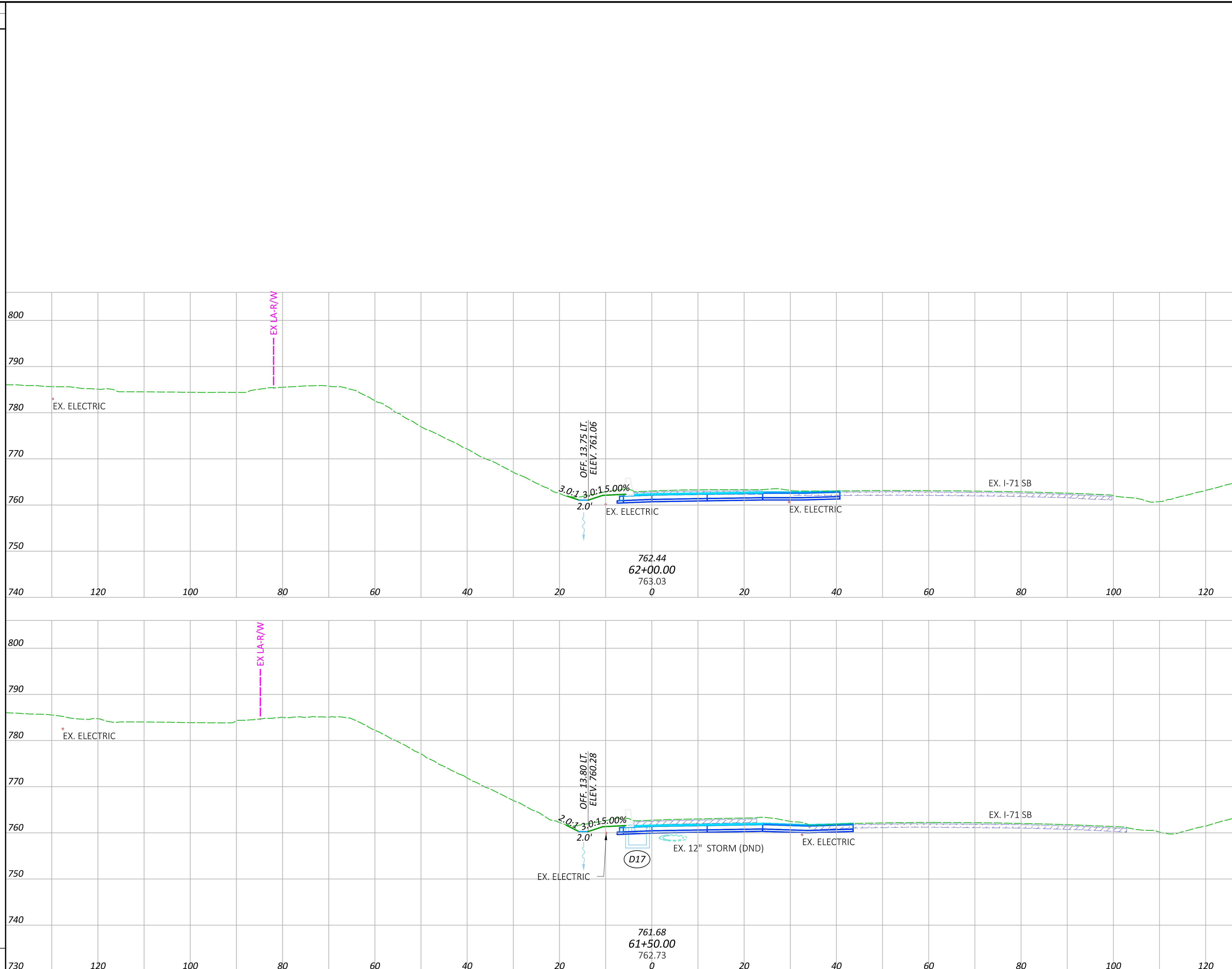
SEEDING	END AREA		VOLUME	
	CUT	FILL	CUT	FILL
41	140	0	0	0
174	235	0	235	0
22	113	0	113	0
125	199	1	199	1
<b>SHEET TOTAL</b>	<b>299</b>		<b>434</b>	<b>1</b>



**CROSS SECTIONS - RAMP Y**  
 STA. 60+50.00 TO STA. 61+00.00

DESIGN AGENCY  
  
 ms consultants - inc.  
 DESIGNER  
 CLH  
 REVIEWER  
 TAZ 09/24/25  
 PROJECT ID  
 123987  
 SHEET TOTAL  
 P.62 122

SEEDING	
END WIDTH	SQ. YDS.
13	
73	
151	
<b>SHEET TOTAL</b>	<b>224</b>



END AREA	VOLUME	
	CUT	FILL
800		
790	80	0
780		
770		
760		
750	178	0
740		
800		
790	112	0
780		
770		
760		
750		
740	233	0
<b>SHEET TOTALS</b>	<b>411</b>	<b>0</b>

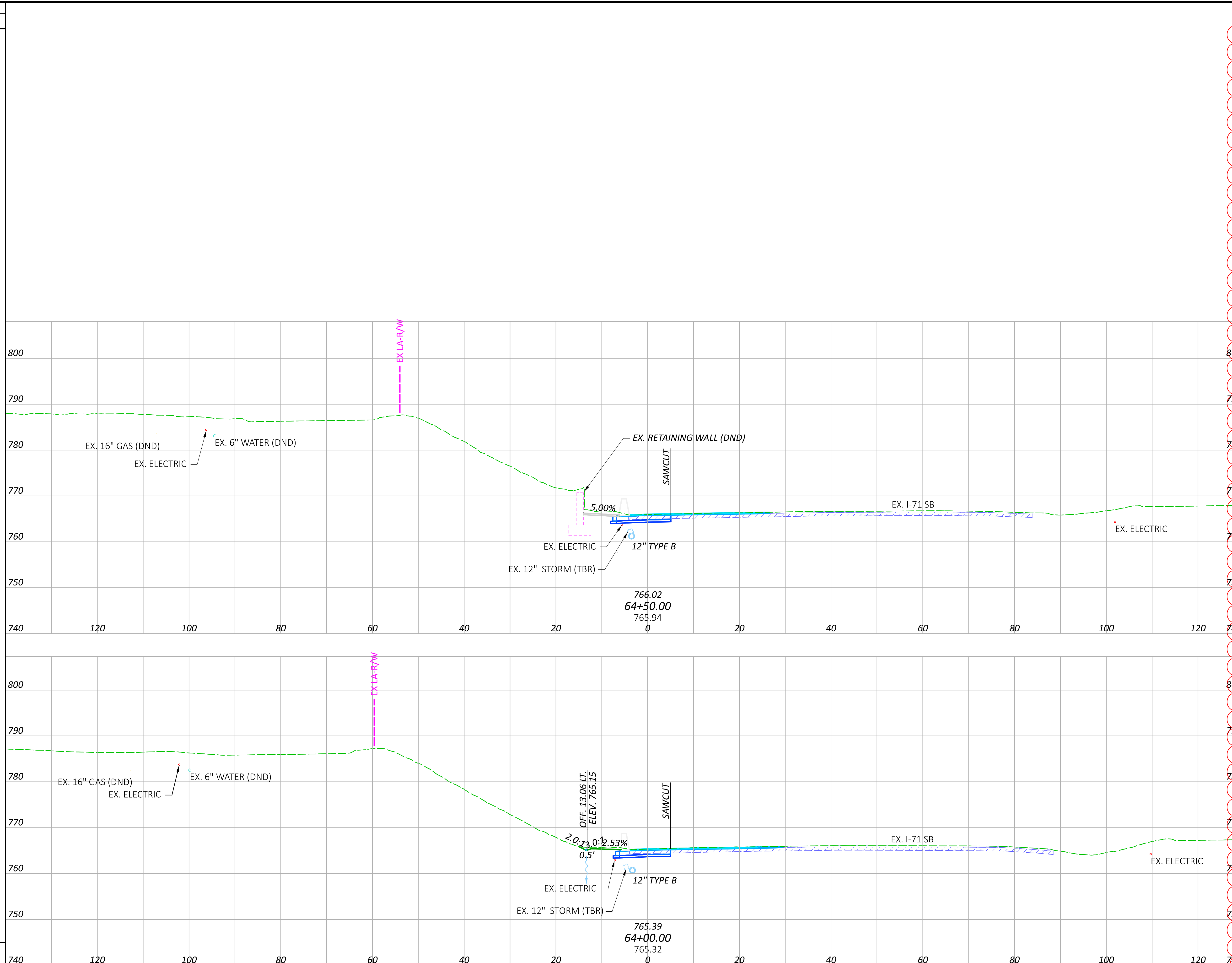
**CROSS SECTIONS - RAMP Y**  
**STA. 61+50.00 TO STA. 62+00.00**

DESIGN AGENCY	
DESIGNER	
REVIEWER	TAZ
PROJECT ID	123987
<b>SHEET TOTAL</b>	<b>P.63   122</b>





SEEDING	END AREA		VOLUME	
	CUT	FILL	CUT	FILL
0				
27				
64				
SHEET TOTAL	91		63	0

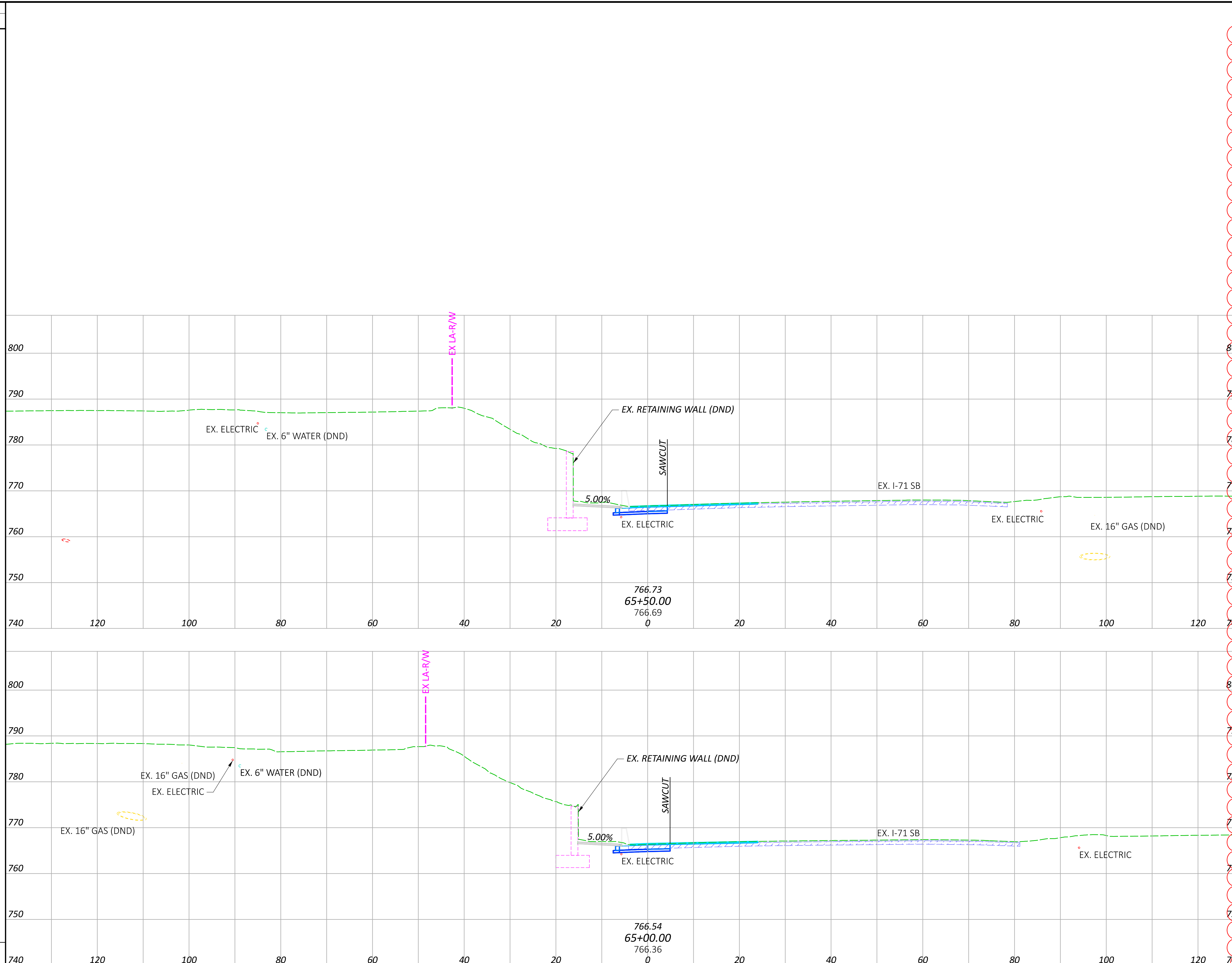


SEEDING	END AREA		VOLUME	
	CUT	FILL	CUT	FILL
0	21	0		
27			35	0
64				
SHEET TOTAL	63	0	0	122

CROSS SECTIONS - RAMP Y  
 STA. 64+00.00 TO STA. 64+50.00

DESIGN AGENCY  
  
 ms consultants - inc.  
 DESIGNER  
 CLH  
 REVIEWER  
 TAZ 09/24/25  
 PROJECT ID  
 123987  
 SHEET TOTAL  
 P.66 122

SEEDING	
END WIDTH	SQ. YDS.
0	0

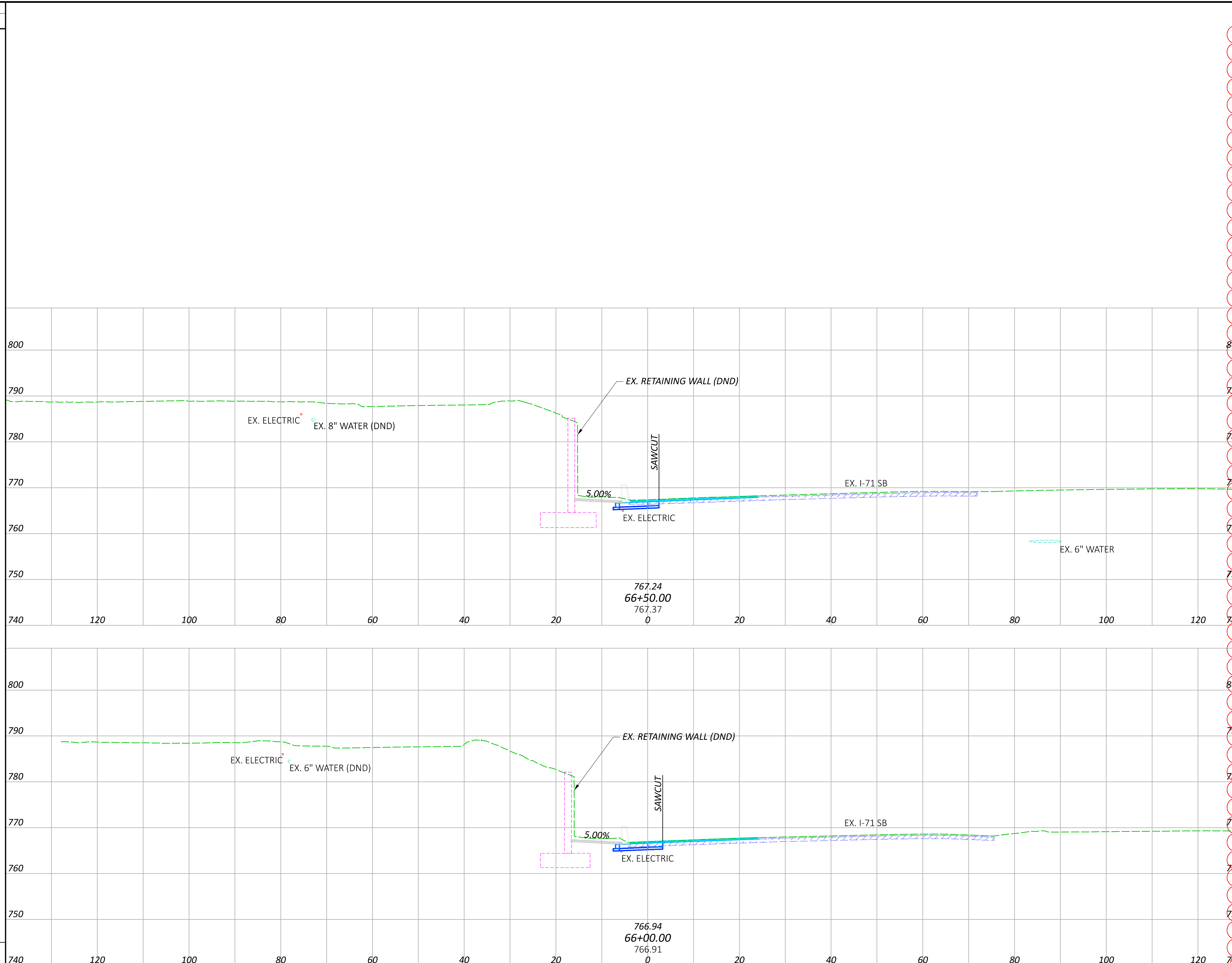


END AREA		VOLUME	
CUT	FILL	CUT	FILL
21	0	0	0
38	0	0	0
37	0	0	0
<b>SHEET TOTALS</b>		75	0

**CROSS SECTIONS - RAMP Y**  
 STA. 65+00.00 TO STA. 65+50.00

DESIGN AGENCY  
  
 ms consultants, inc.  
 DESIGNER  
 CLH  
 REVIEWER  
 TAZ 09/24/25  
 PROJECT ID  
 123987  
 SHEET TOTAL  
 P.67 | 122

SEEDING	
END WIDTH	SQ. YDS.
0	0
<b>SHEET TOTAL</b>	



END AREA		VOLUME	
CUT	FILL	CUT	FILL
32	0	0	0
58	0	0	0
31	0	0	0
48	0	0	0
<b>SHEET TOTALS</b>		106	0

**CROSS SECTIONS - RAMP Y**  
 STA. 66+00.00 TO STA. 66+50.00

DESIGN AGENCY  
  
 ms consultants, inc.  
 DESIGNER  
 CLH  
 REVIEWER  
 TAZ 09/24/25  
 PROJECT ID  
 123987  
 SHEET TOTAL  
 P.68 | 122



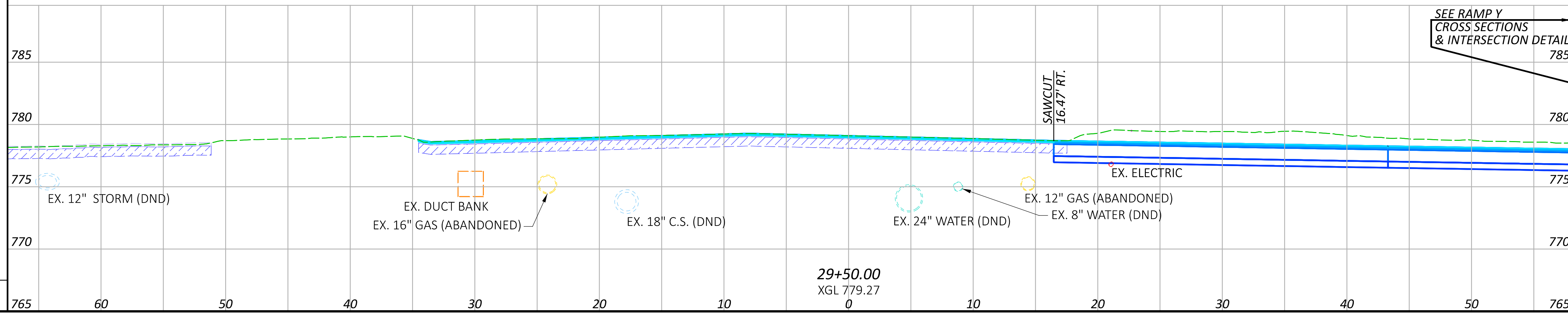
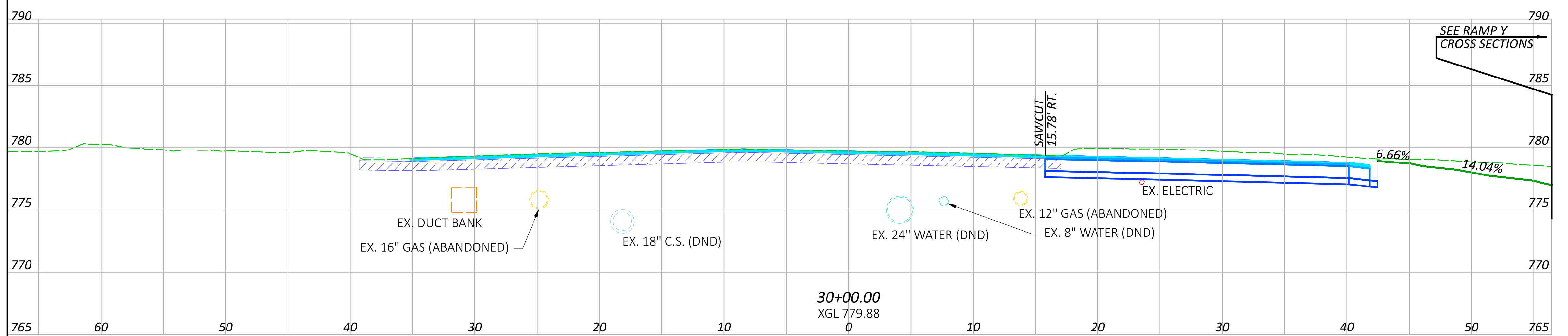
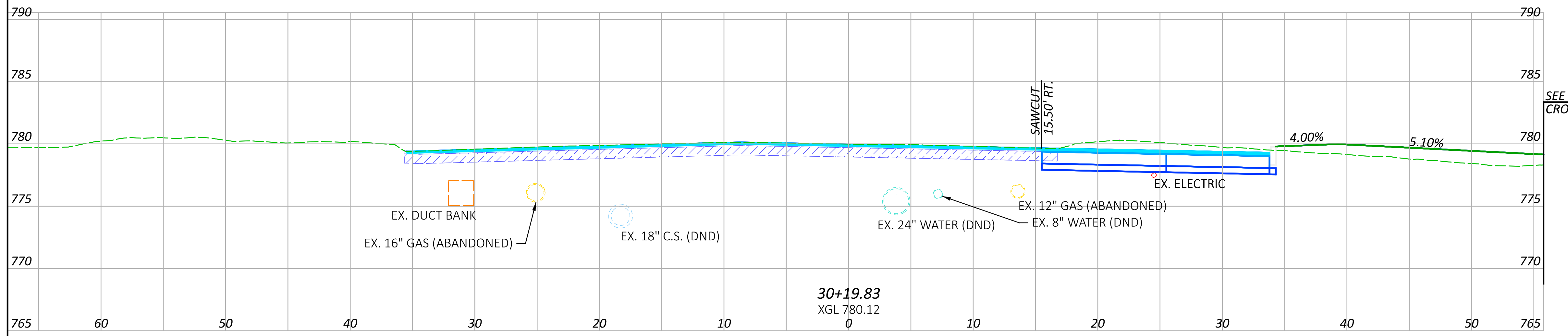






SEEDING	END AREA		VOLUME	
	CUT	FILL	CUT	FILL
END WIDTH				
SQ. YDS.				
22	40	18		
39			41	7
14	72	0		
39			160	0
0	101	0		
106			97	37
<b>SHEET TOTAL</b>	<b>298</b>	<b>44</b>	<b>595</b>	<b>44</b>

NOTE: EXISTING SURFACES DEPICTED IN THE PLANS ARE BASED ON ODOT LIDAR. AS SUCH, EXISTING CURBS AND BARRIERS ARE NOT ALWAYS DEPICTED ACCURATELY IN THE PLANS. THE CONTRACTOR SHALL FIELD MATCH TIE-IN LOCATIONS AS REQUIRED. FOR PAVEMENT PLANING AND RESURFACING ON E. MAIN STREET THE CONTRACTOR SHALL MATCH EXISTING ELEVATIONS.



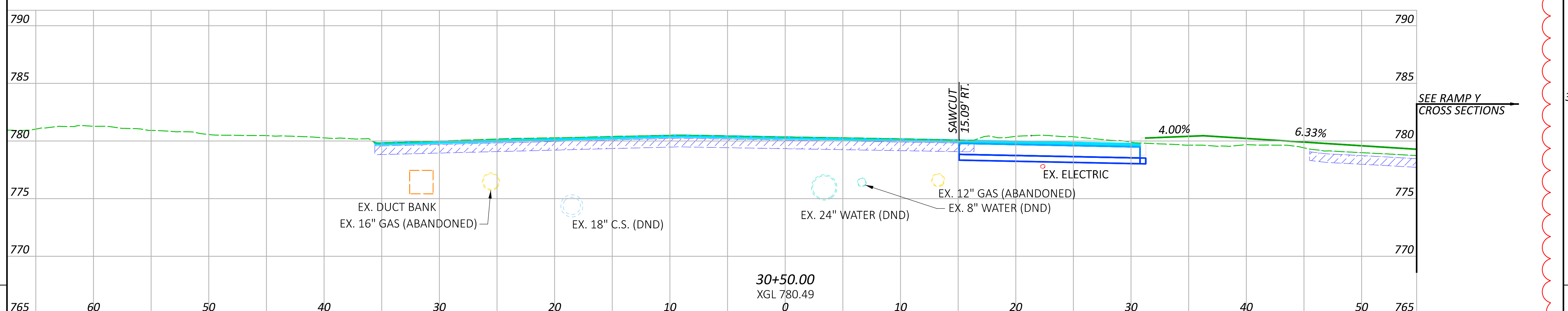
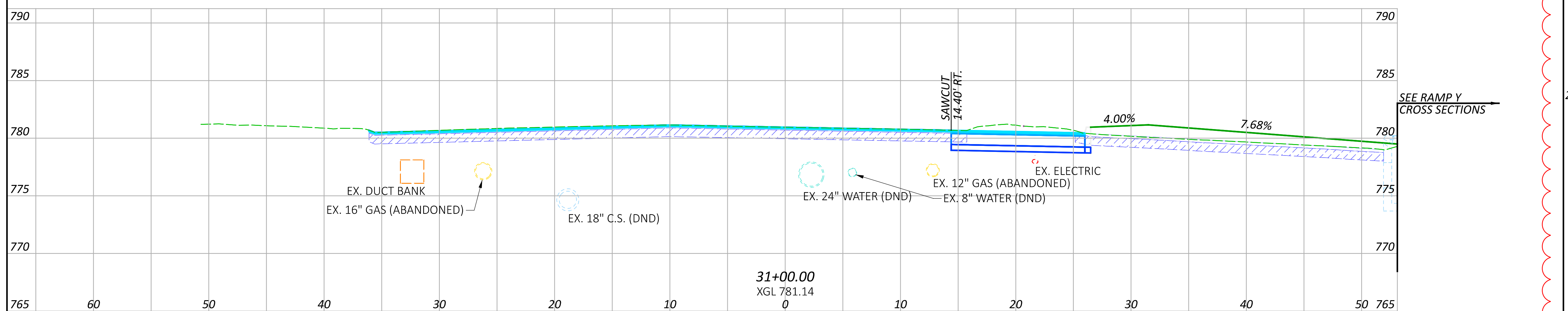
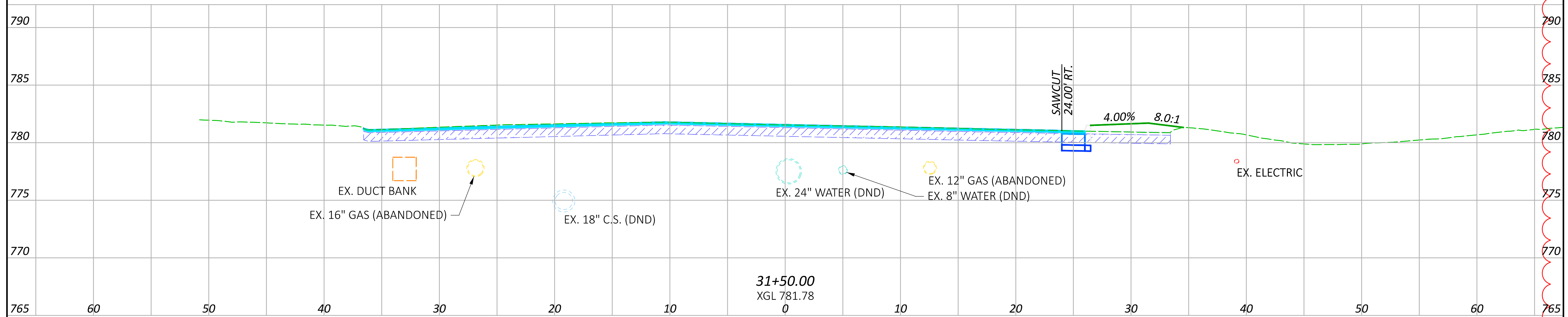
SEEDING	END AREA		VOLUME	
	CUT	FILL	CUT	FILL
END WIDTH				
SQ. YDS.				
22	40	18		
39			41	7
14	72	0		
39			160	0
0	101	0		
106			97	37
<b>SHEET TOTAL</b>	<b>298</b>	<b>44</b>	<b>595</b>	<b>44</b>

CROSS SECTIONS - E. MAIN ST.  
 STA. 29+50.00 TO STA. 30+19.83

DESIGN AGENCY  
  
 ms consultants, inc.  
 DESIGNER  
 CLH  
 REVIEWER  
 TAZ 09/24/25  
 PROJECT ID  
 123987  
 SHEET TOTAL  
 P.73 122

SEEDING	END AREA		VOLUME	
	CUT	FILL	CUT	FILL
8	2	12	22	53
96	22	46	50	64
139	32	23	40	23
76				
<b>SHEET TOTAL</b>	<b>311</b>		<b>112</b>	<b>140</b>

NOTE: EXISTING SURFACES DEPICTED IN THE PLANS ARE BASED ON ODOT LIDAR. AS SUCH, EXISTING CURBS AND BARRIERS ARE NOT ALWAYS DEPICTED ACCURATELY IN THE PLANS. THE CONTRACTOR SHALL FIELD MATCH TIE-IN LOCATIONS AS REQUIRED. FOR PAVEMENT PLANING AND RESURFACING ON E. MAIN STREET THE CONTRACTOR SHALL MATCH EXISTING ELEVATIONS.



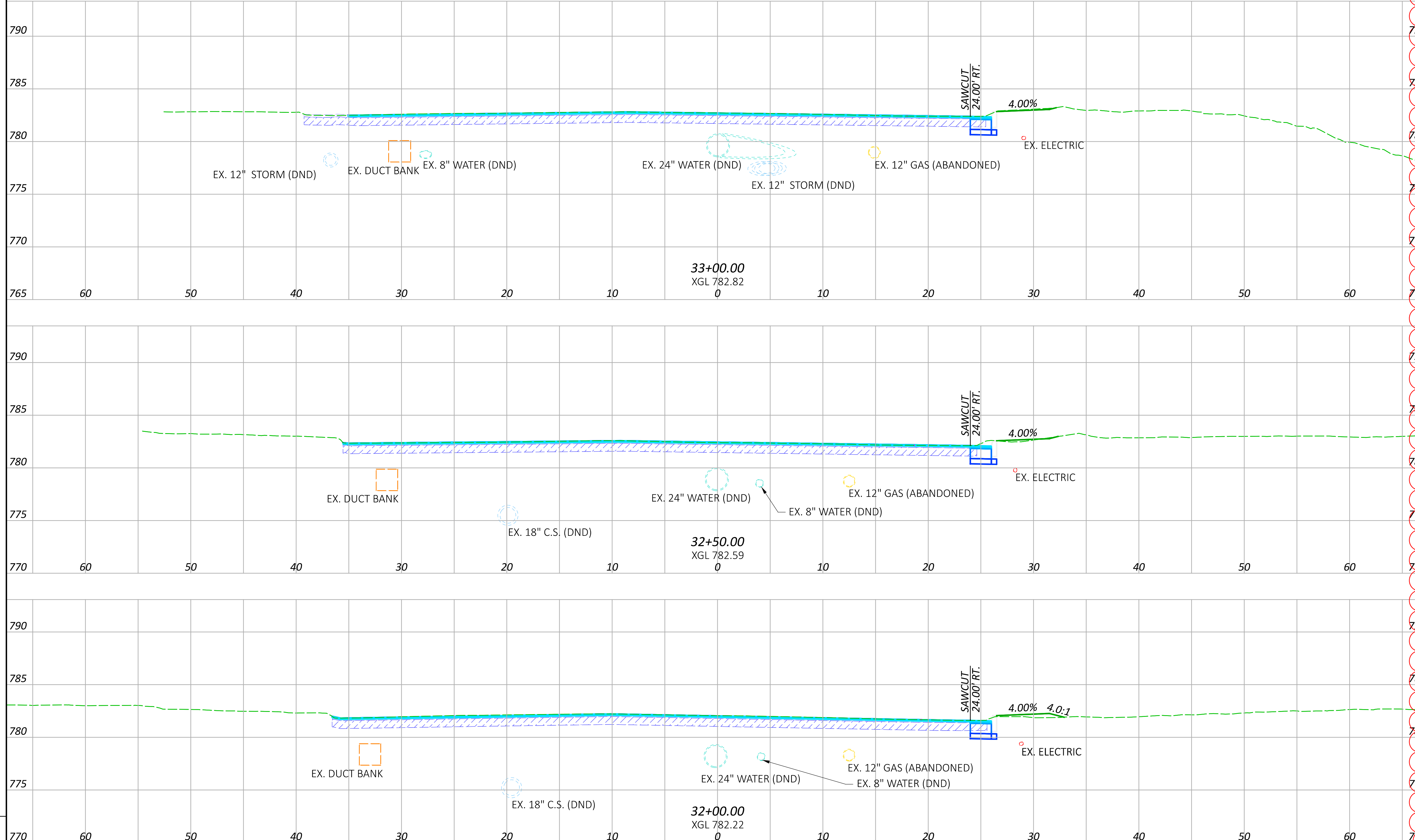
END AREA	VOLUME	
	CUT	FILL
2	12	53
22	46	64
32	23	23
<b>SHEET TOTALS</b>	<b>112</b>	<b>140</b>

CROSS SECTIONS - E. MAIN ST.  
 STA. 30+50.00 TO STA. 31+50.00

DESIGN AGENCY  
  
 ms consultants - inc.  
 DESIGNER  
 CLH  
 REVIEWER  
 TAZ 09/24/25  
 PROJECT ID  
 123987  
 SHEET TOTAL  
 P.74 122

SEEDING	
END WIDTH	SQ. YDS.
6	
32	
34	
40	
<b>SHEET TOTAL</b>	<b>106</b>

NOTE: EXISTING SURFACES DEPICTED IN THE PLANS ARE BASED ON ODOT LIDAR. AS SUCH, EXISTING CURBS AND BARRIERS ARE NOT ALWAYS DEPICTED ACCURATELY IN THE PLANS. THE CONTRACTOR SHALL FIELD MATCH TIE-IN LOCATIONS AS REQUIRED. FOR PAVEMENT PLANING AND RESURFACING ON E. MAIN STREET THE CONTRACTOR SHALL MATCH EXISTING ELEVATIONS.



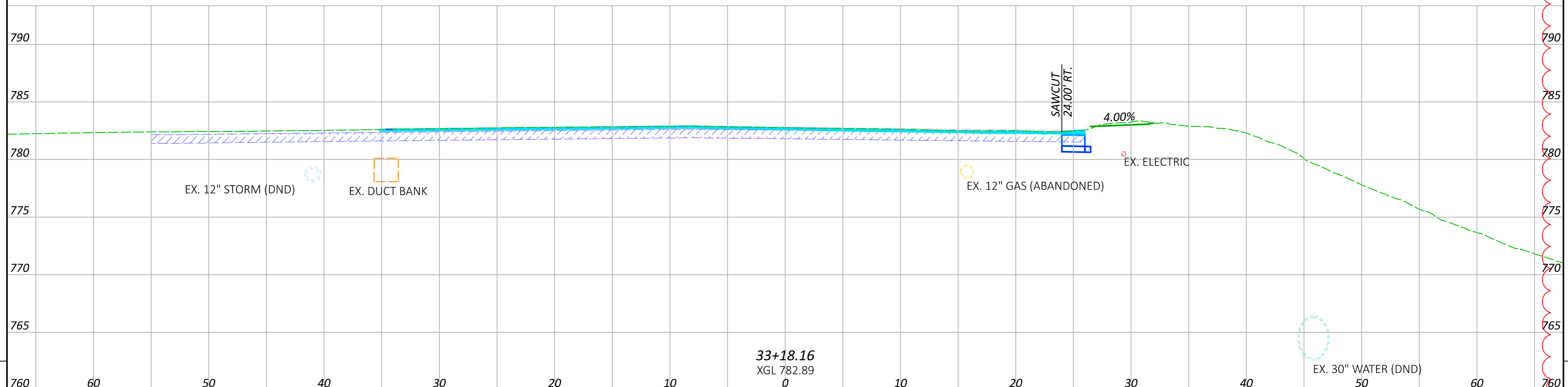
END AREA	VOLUME				
		CUT	FILL	CUT	FILL
4	0				
8	0				
7	2				
3	1				
5	12				
<b>SHEET TOTALS</b>		<b>20</b>	<b>14</b>		

CROSS SECTIONS - E. MAIN ST.  
 STA. 32+00.00 TO STA. 33+00.00

DESIGN AGENCY  
  
 ms consultants, inc.  
 DESIGNER  
 CLH  
 REVIEWER  
 TAZ 09/24/25  
 PROJECT ID  
 123987  
 SHEET TOTAL  
 P.75 122

SEEDING	
END WIDTH	SQ. YDS.
5	11
SHEET TOTAL 11	

NOTE: EXISTING SURFACES DEPICTED IN THE PLANS ARE BASED ON ODOT LIDAR. AS SUCH, EXISTING CURBS AND BARRIERS ARE NOT ALWAYS DEPICTED ACCURATELY IN THE PLANS. THE CONTRACTOR SHALL FIELD MATCH TIE-IN LOCATIONS AS REQUIRED. FOR PAVEMENT PLANING AND RESURFACING ON E. MAIN STREET THE CONTRACTOR SHALL MATCH EXISTING ELEVATIONS.



END AREA	VOLUME				
		CUT	FILL	CUT	FILL
4	0	2	0		
SHEET TOTALS		2	0		

CROSS SECTIONS - E. MAIN ST.  
 STA. 33+18.16

DESIGN AGENCY  
  
 ms consultants, inc.  
 DESIGNER  
 CLH  
 REVIEWER  
 TAZ 09/24/25  
 PROJECT ID  
 123987  
 SHEET TOTAL  
 P.76 | 122