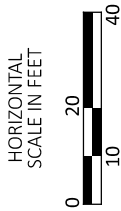


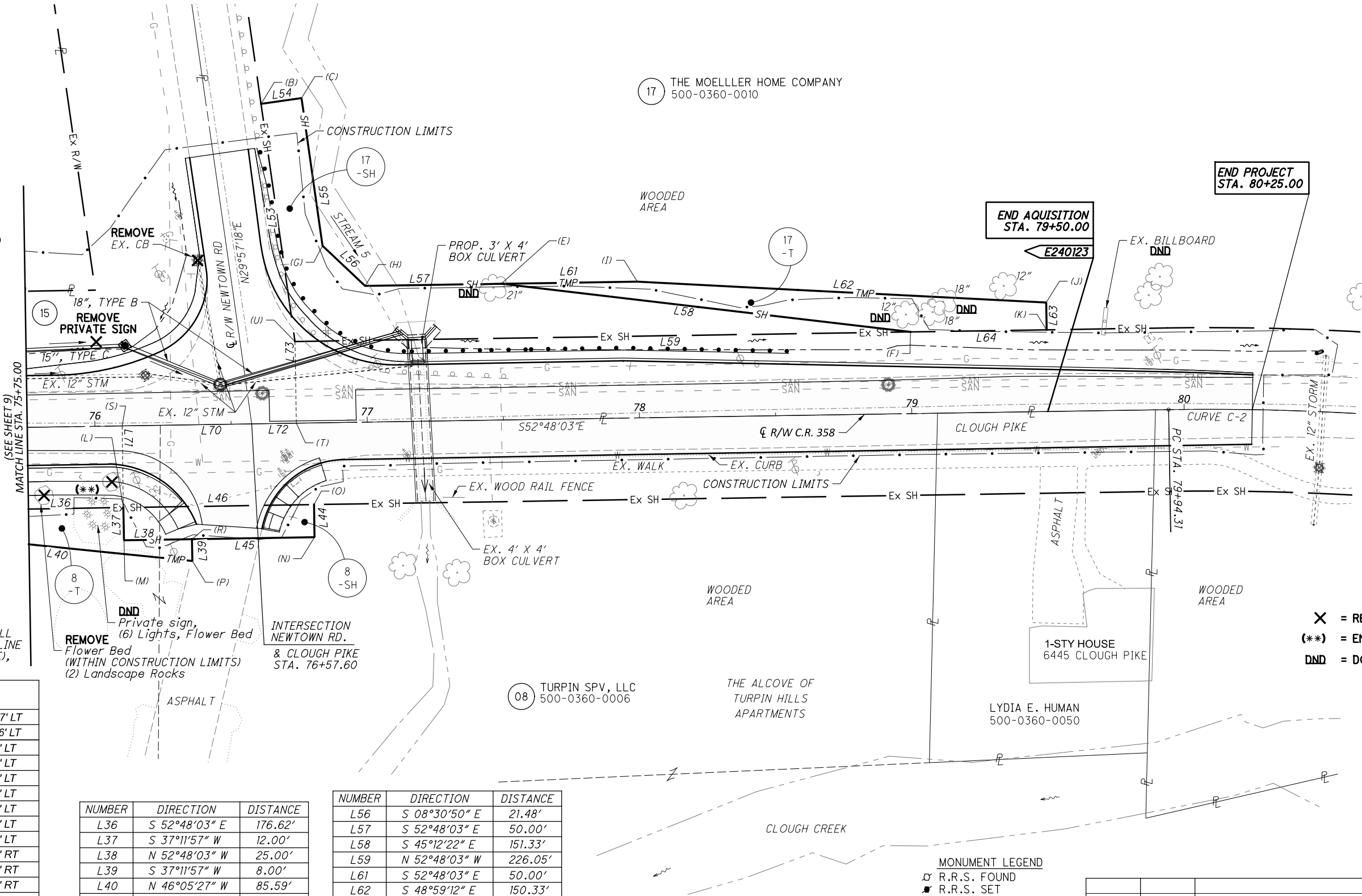
CURVE C-2 DATA
P.I. = STA. 81+26.83
 $\Delta = 15^{\circ}48'00''$ RT
Dc = $06^{\circ}00'00''$
R = 954.93'
T = 132.51'
L = 263.33'
E = 9.15'

MERCER'S POINTE
P.B. 398, PG 25
Lot #11

N. MASSIE MILITARY SURVEY 2276
ANDERSON TOWNSHIP,
HAMILTON COUNTY, OHIO



- 14 ANDERSON TOWNSHIP
COUNTY OF HAMILTON, OHIO
500-0360-0440
- 15 COUNTY OF HAMILTON,
STATE OF OHIO
500-0360-0442



THE PROPOSED RIGHT-OF-WAY SHALL
BE REFERENCED FROM THE CENTERLINE
OF R/W OF C.R. 358 (CLOUGH PIKE),
UNLESS OTHERWISE NOTED

STA/OFF FROM C R/W CLOUGH PIKE		
(B)	76+62.83	117.47' LT
(C)	76+77.71	119.36' LT
(E)	77+50.00	50.00' LT
(F)	79+00.00	30.00' LT
(G)	76+84.62	65.00' LT
(H)	77+00.00	50.00' LT
(I)	78+00.00	50.00' LT
(J)	79+50.00	40.00' LT
(K)	79+50.00	30.00' LT
(L)	76+10.00	30.00' RT
(M)	76+10.00	42.00' RT
(N)	76+80.00	42.00' RT
(O)	76+80.00	30.00' RT
(P)	76+35.00	50.00' RT
(R)	76+35.00	42.00' RT
(S)	76+10.00	0.00' RT
(T)	76+73.95	0.00' RT
(U)	76+73.95	30.00' LT

NUMBER	DIRECTION	DISTANCE
L36	S 52°48'03" E	176.62'
L37	S 37°11'57" W	12.00'
L38	N 52°48'03" W	25.00'
L39	S 37°11'57" W	8.00'
L40	N 46°05'27" W	85.59'
L44	S 37°11'57" W	12.00'
L45	N 52°48'03" W	45.00'
L46	S 52°48'03" E	70.00'
L53	N 29°57'18" E	88.17'
L54	S 60°02'42" E	15.00'
L55	S 29°57'18" W	54.80'

NUMBER	DIRECTION	DISTANCE
L56	S 08°30'50" E	21.48'
L57	S 52°48'03" E	50.00'
L58	S 45°12'22" E	151.33'
L59	N 52°48'03" W	226.05'
L61	S 52°48'03" E	50.00'
L62	S 48°59'12" E	150.33'
L63	S 37°11'57" W	10.00'
L64	N 52°48'03" W	50.00'
L70	N 52°48'03" W	47.60'
L71	S 37°11'57" W	30.00'
L72	S 52°48'03" E	16.35'
L73	N 37°11'57" E	30.00'

EX. MONUMENTS OF CLOUGH PIKE

STATION	OFFSET	DESCRIPTION
79+31.11	22.38' RT.	CNPT - "STANTEC-106"

MONUMENT LEGEND

- R.R.S. FOUND
- R.R.S. SET
- P.K. NAIL FOUND
- CONC. MONUMENT FD.
- REFER. MONUMENT SET
- IRON PIN FOUND
- I.P.F. WITH I.D. CAP
- 3/4" BAR SET
- PROJECT CONTROL MON.

- X = REMOVE
(**) = ENCROACHMENT
DND = DO NOT DISTURB

RIGHT OF WAY DETAIL
STA. 75+75.00 TO STA. 80+25.00

DESIGN AGENCY

Stantec
10200 Alliance Road,
Suite 300
Cincinnati, OH 45242
(613) 842-8200

DESIGNER
NJK

REVIEWER
SER 11/07/24

PROJECT ID
118484

SHEET TOTAL
10 58

REV. BY	DATE	DESCRIPTION
SER	11/04/24	8-T DISPOSITION OF SIGN & LANDSCAPING
REV. BY	DATE	DESCRIPTION
DATE COMPLETED		