

STATE OF OHIO
DEPARTMENT OF HIGHWAYS
PLYMOUTH-BUCYRUS ROAD
S.H. 205 SEC. PLYMOUTH (PT.)
PLYMOUTH-NORWALK ROAD
S.H. 292 SEC. PLYMOUTH & J
RICHLAND & HURON COUNTIES
NEW HAVEN TWP & VILLAGE OF PLYMOUTH

FED. RD. DIST. NO.	STATE	PROJECT	FISCAL YEAR
	OHIO		1945

RICHLAND COUNTY
S.H. 205 SEC. PLYMOUTH (PT.)
HURON COUNTY
S.H. 292 SEC. PLYMOUTH & J

CONVENTIONAL SIGNS

County Line
City or Village Line
Railroad Line
Center Line

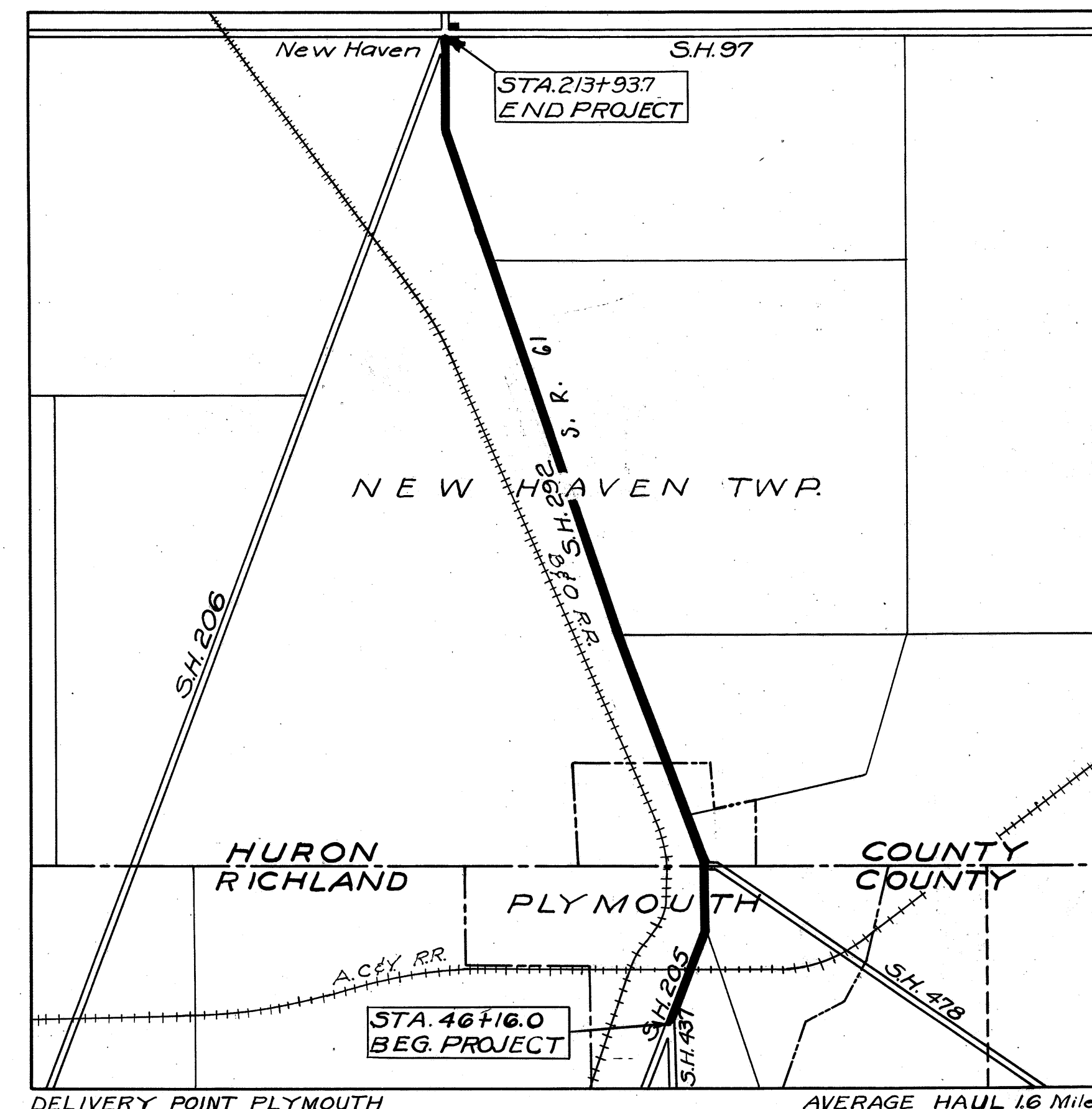
INDEX OF SHEETS

Title Sheet
Typical Sections
General Notes
Plan and Profile
Summary

LINE DATA

Municipal
S.H. 205 Sec. Plymouth (Pt.)
Sta. 46+16.0 to Sta. 73+92.10 = 2776.10 Lin. Ft.
Deduct for Railroad = 9.50 Lin. Ft.
Net Length of S.H. 205 Sec. Plymouth (Pt.) = 2766.60 Lin. Ft. or 0.523 Miles
S.H. 292 Sec. Plymouth
Sta. 73+92.10 to Sta. 113+59.23 = 3967.13 Lin. Ft.
No Additions or Deductions = 3967.13 Lin. Ft. or 0.751 Miles
Net Length S.H. 292 Sec. Plymouth = 6733.73 Lin. Ft. or 1.275 Miles
Net Length of Municipal Rural
S.H. 292 Sec. J.
Sta. 113+59.23 to Sta. 213+93.70 = 10034.47 Lin. Ft.
No Additions or Deductions = 10034.47 Lin. Ft. or 1.900 Miles
Net Length of S.H. 292 Sec. J. = 16768.20 Lin. Ft. or 3.175 Miles
Net Length of Project

STD. CONST. DRAWING	
G-7.07	6-1-42
L-1	12-1-41



LOCATION PLAN

Scale of Feet
0 1000 2000 3000 4000

Portion to be improved
State Highways
Other Highways

SCALES

Plan
Profile (Horizontal)
Profile (Vertical)

1" = 100' & 1" = 50'
1" = 100' & 1" = 50'
1" = 10' & 1" = 5'

The Standard Specifications of the State of Ohio Department of Highways, including changes and Supplemental Specifications listed in the proposal shall govern this improvement.

I hereby approve these plans and declare that the making of this improvement will not require the closing to traffic of the Highway and that traffic will be maintained as indicated on the plans.

The right-of-way necessary for this improvement will be provided by the State of Ohio.

Approved _____
Date 9-13-45 Resident Division Deputy Director

Approved _____
Date 10-4-45 Chief Engineer, Bureau of Location & Design

Approved _____
Date 10-9-45 First Assistant Director and Chief Engineer

Approved _____
Date 10-9-45 Director of Highways

CONSTRUCTION
BUREAU
AUG 22 1955
GROUND PHOTOLAB

SUPPL. SPECIFICATIONS	
I-117	1-15-44
E-305	Rev. 5-1-41
177	Rev. 4-21-44
178	Rev. 4-21-44
M-102.12	8-2-43

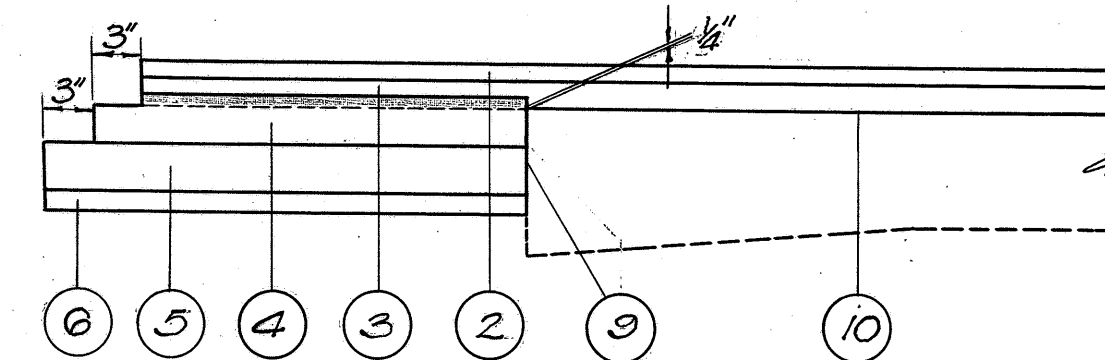
FILE
No. 131-4
HURON & RICHLAND Co. S.H. 205 SEC. Plymouth (Pt.) & S.H. 292 SEC. Plymouth & J.
Date of Letting
Contract No.

TYPICAL SECTIONS TYPE T-35

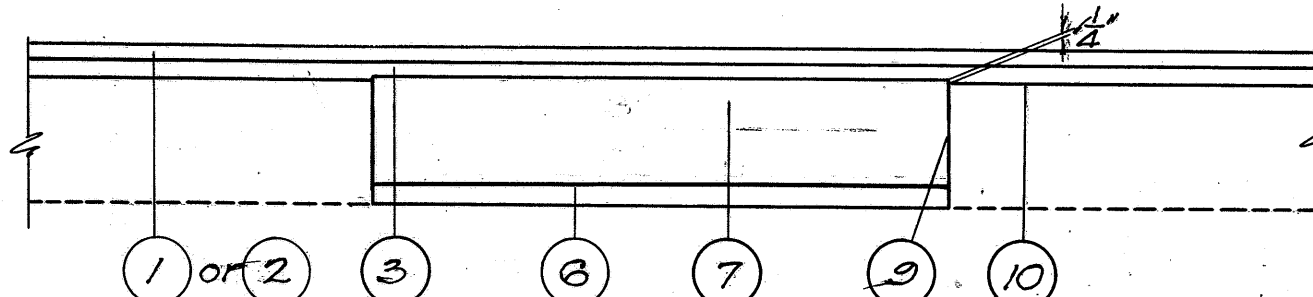
FED. RD. DIST. NO.	STATE	PROJECT	FISCAL YEAR
	OHIO		1945

RICHLAND COUNTY
S.H. 205 SEC. PLYMOUTH (PT.)
HURON COUNTY
S.H. 292 SEC. PLYMOUTH (PT.)

2
12

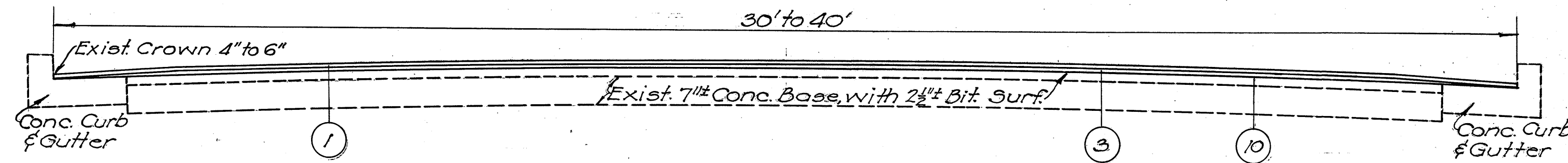


EDGE CONSTRUCTION & COURSE DETAIL
Where the 3" leveling course in the widened area would finish more than $\frac{1}{4}$ " above the edge of the exist. pavement, that portion below the dashed line shall be placed and compacted in a separate operation. The shaded portion shall be placed simultaneously with the full width leveling course.

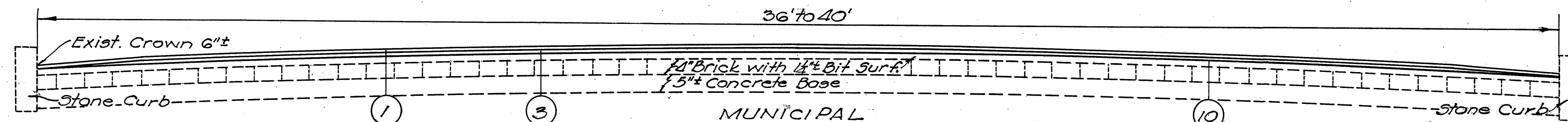


DETAIL OF PAVEMENT REPLACEMENT

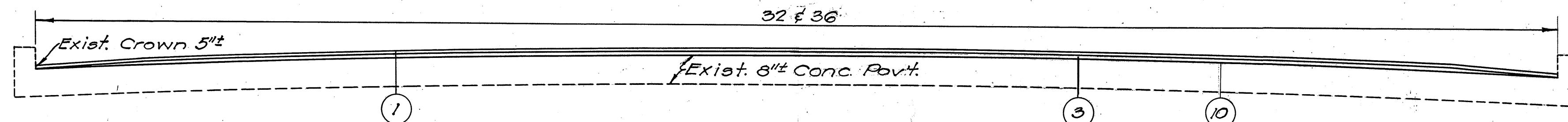
Pavement Removal (est.)
Municipal 600 Sq. Yds.
Rural 300 Sq. Yds.
Aeph. Conc. Base Course (est.)
Municipal 125 Cu. Yds.
Rural 50 Cu. Yds.



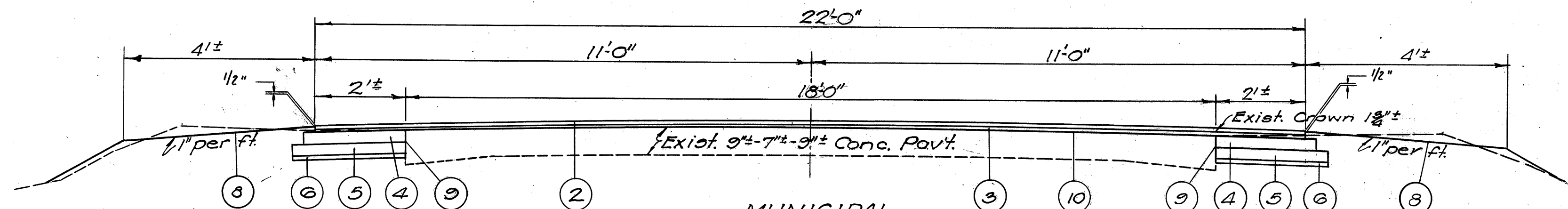
MUNICIPAL
Sta. 46+16.0 to Sta. 48+00.0 = 184.0 L.F. (35' Ave.)
Sta. 48+00.0 to Sta. 55+54.2 = 754.2 L.F. (30')
Sta. 55+54.2 to Sta. 60+50.0 = 486.3 L.F. (30')
Sta. 60+50.0 to Sta. 73+14.5 = 1264.5 L.F. (40')



MUNICIPAL
Sta. 73+14.5 to Sta. 75+45.0 = 230.5 L.F. (40')
Sta. 75+45.0 to Sta. 76+51.0 = 106.0 L.F. (39')
Sta. 76+51.0 to Sta. 78+95.0 = 244.0 L.F. (36')

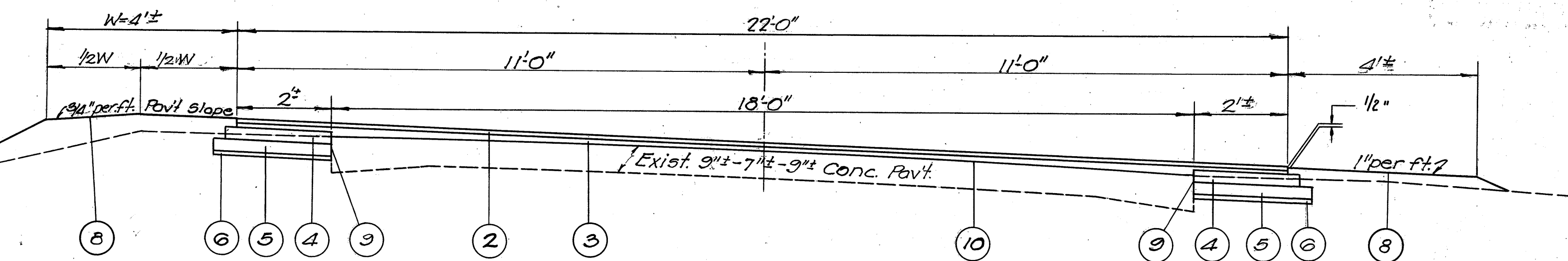


MUNICIPAL
Sta. 78+95.0 to Sta. 83+92.0 = 497.0 L.F. (36')
Sta. 83+92.0 to Sta. 100+25.0 = 1633.0 L.F. (32')

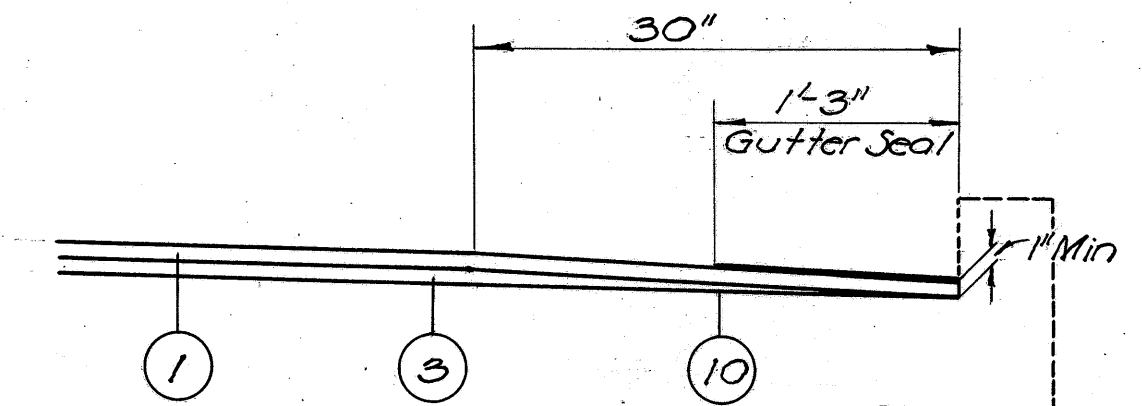


MUNICIPAL
Sta. 100+25.0 to Sta. 113+53.23 = 1334.23 L.F.
RURAL
Sta. 113+53.23 to Sta. 213+41.74 = 9982.51 L.F.

Approach (Rural) Sta.
213+41.74 to Sta. 213+93.7
Detailed on Sheet No. 11

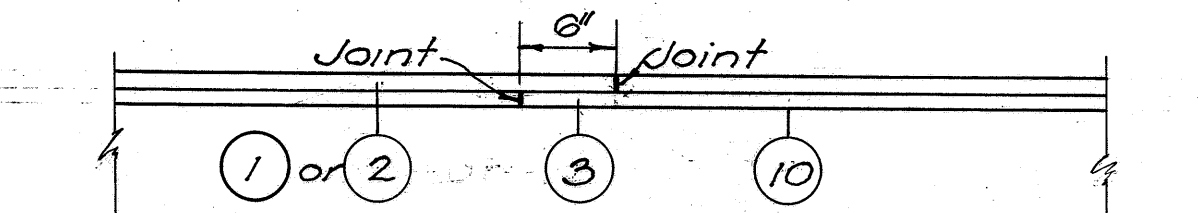


SUPERELEVATED SEC.

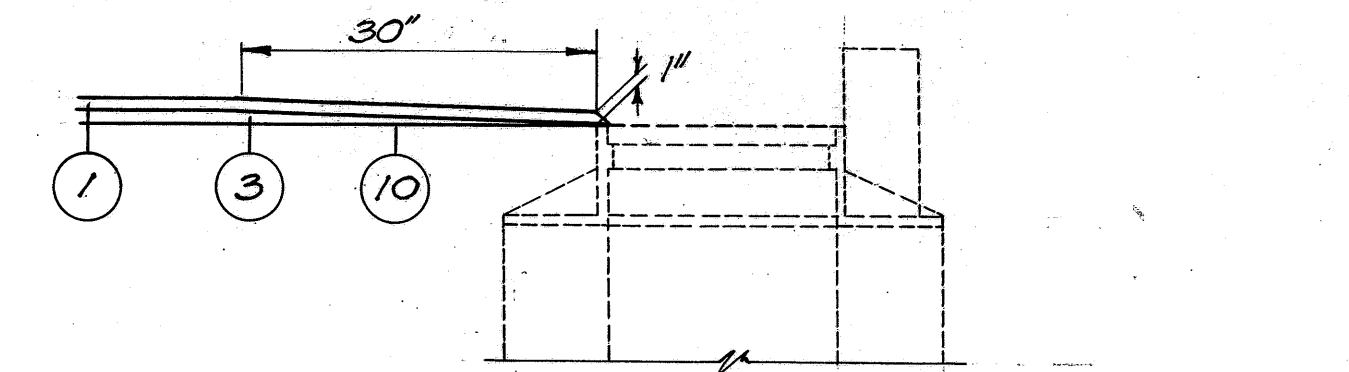


DETAIL OF GUTTER RESURFACING

Special care shall exercised during construction to obtain maximum compaction of the bituminous concrete in all gutters.



DETAIL OF LAPPING LONGITUDINAL JOINTS



DETAIL OF RESURFACING AT INLETS

Berms shall be finished $\frac{1}{2}$ " below pavement edge except on high side of super-elevated sections

- 1 T-35 1" Asphaltic Concrete Surface Course-Type B
- 2 T-35 $\frac{1}{4}$ " Asphaltic Concrete Surface Course-Type A
- 3 B-35 1" Minimum Asphaltic Concrete Leveling Course.
- 4 B-35 3" Asphaltic Concrete Leveling Course.
- 5 B-35 3" Asphaltic Concrete Base Course.
- 6 I-19 $\frac{1}{4}$ " Insulation Course.
- 7 B-35 Variable Thickness Asphaltic Concrete Base Course (Placed in courses not to exceed 3").
- 8 E-305 Seeding & Protecting Roadway Areas.
- 9 E-10 Sealing (only) of Exist. Pavt. Edge.
- 10 T-30 Bituminous Prime Coat Sec. M-55, M-5-I (incl. sand cover)

GENERAL NOTES

FED. RD. DIST. NO.	STATE	PROJECT	FISCAL YEAR	
	OHIO		1945	3 12
RICHLAND SH. 205 HURON SH. 292		COUNTY SEC. PLYMOUTH CPTD COUNTY SEC. PLYMOUTH & J		

TRAFFIC

Traffic shall be maintained at all times. The length of one-way traffic zones shall be kept to a minimum consistent with the requirements of Sec. T-35.23. In addition to the requirements of Sec. G-707, Barricades, Danger and Warning Signs, the Contractor shall display one "PLEASE-MEN WORKING ON ROAD" sign, furnished by the State, at each end of each one-way zone and in such a position as to be visible to traffic approaching the one-way zone. The Contractor shall be responsible for the preservation of these signs, shall advance the signs as work progresses, and shall return the signs to the State at the completion of the work.

The Item of "Maintaining Traffic" shall include furnishing lights, signs, (other than those mentioned above) barricades and watchmen, plus the displaying and advancing of the "PLEASE-MEN WORKING ON ROAD" signs to secure the flow of traffic twenty-four (24) hours daily.

PROFILE

The profile of the proposed surface course shall be approximately 2 1/2 inches above that of the existing pavement.

EARTHWORK

Watering embankments, benching, density requirements and the removal of sod from the shoulders will not be required for roadway sections to be widened. However Item E-1 and Item E-4 shall include the thorough compaction of embankment in layers not exceeding eight inches compacted thickness and shall include any operations of grading necessary to finish the shoulders and slopes substantially to the lines indicated on the typical sections. The provisions of Sec. E-1.12 will be waived providing lines of berms and slopes have been finished in a uniform, slightly condition. No provisions of the specifications will be waived for embankment which supports any portion of the new pavement or forms.

COMPACTION OF SUBGRADE

Loosening and watering of subgrade in cuts according to Sec. E-1.11 will not be required if density requirements can be met by additional rolling. However, if at any time, the subgrade contains an excess of moisture as indicated by distortion under the roller, the subgrade shall be aerated by discing or other suitable means until the moisture content has been reduced sufficiently to permit recompaction to the density required by the specifications.

FILLING MAJOR DEPRESSIONS

Major depressions in existing pavement shall be filled and compacted with a bituminous concrete leveling material in advance of placing the regular leveling course. These depressions shall be filled in layers not to exceed three inches in depth when compacted.

TREATMENT OF FEATHERED AREA

Where directed the new surface course shall be feathered. The area upon which less than one inch of surface course is to be placed shall be considered as the area to be feathered. A paint coat of the same bituminous material used in the mix shall be applied to this area before placing the bituminous concrete surface course. The cost of such operation and material shall be included in the unit price bid for bituminous concrete.

SEEDING

All areas between the edge of proposed pavement and Right-of-Way which are disturbed by construction operations, shall be seeded according to Supplemental Specifications E-305 (Revised 5-1-41). The entire seeded area shall have the following formula, "40% Kentucky Blue Grass (21"), 30% Winter Vetch, 10% Domestic Rye Grass, 15% Redtop, 5% White Clover." Sown at rate of 3 pounds per 1000 Sq. Ft. Vetch and clover shall be inoculated. Straw mulch shall be applied immediately after covering seed. 40 penny spikes may be used if soil is too hard for wood pegs. Estimated Quantities, Municipal=2100 Sq.Yds, Rural=15,600

COMMERCIAL FERTILIZER

The formula shall be 4-12-4, and applied over entire area to be seeded at rate of 20 pounds per 1000 Sq. Ft. and incorporated into the soil 2 inches deep prior to seeding. Estimated Quantities, Municipal=372 Lbs, Rural=2800 Lbs.

SEALING EXISTING EDGES

Vertical faces of existing work, such as castings, curbs etc, against which bituminous concrete is to be placed, shall be painted or sealed with bituminous material in accordance with Sec. E-10.02. The cost of such operation and material shall be included in the price bid for bituminous concrete.

BASE COURSE

Bituminous concrete base course may be constructed of Type "A" surface course composition.

SCALPING

Sod and topsoil from scalping operations shall be placed to a uniform depth and incorporated in the upper 3" of shoulders, slopes and ditches. Cost to be included in the unit price bid for Item E-1, Roadway Excavation.

GUTTER SEAL

After placing and compacting the bituminous concrete surface course, the gutter surface shall be sealed with the same bituminous material contained in the mixture. Only enough material shall be applied to coat the surface for a distance of 15" from the curb or 24" wide for a "V" gutter. The material shall be applied by an approved method at a temperature of from 300°F to 350°F. The cost of such operation and material shall be included in the price bid for bituminous concrete.

SUPERELEVATION

Superelevated curves shall be built without crown. The crown shall be worked out of the pavement in that portion between the beginning of the transition and the point where the superelevation equals twice the crown.

UTILITY ADJUSTMENT

Any and all work required for Public or Private Utilities will be done by and at the expense of their respective owners unless otherwise noted in these plans.

TREE & STUMP REMOVAL

No tree shall be cut, even though marked for removal, unless approved by the Division Landscape Architect.

PRIME COAT INCLUDING SAND COVER

Bituminous Prime Coat, Sec. M-5.5, M5-1 shall be applied by distributor or brooms at the rate of 0.10 gal. per square yard. After the bituminous material has been applied, all material not required to give a uniform coating to the surface shall be swept into all cracks and open joints before the sand cover is placed. Sand cover shall be uniformly spread at the rate of from 2 to 5 pounds per square yard. The sand shall be spread at such a time and shall be in such condition that it will adhere to the bituminous material. Payment for sand cover is included in the price bid per gallon for bituminous material.

RAILROAD CROSSINGS

The new surface course shall be feathered to meet the rail grades if necessary.


RESETTING CASTINGS

This item shall be performed after completion of the leveling course and prior to placing the surface course. Portions of the existing pavement removed to adjust castings to the grade of the new surface shall be replaced full depth with class "C" concrete.

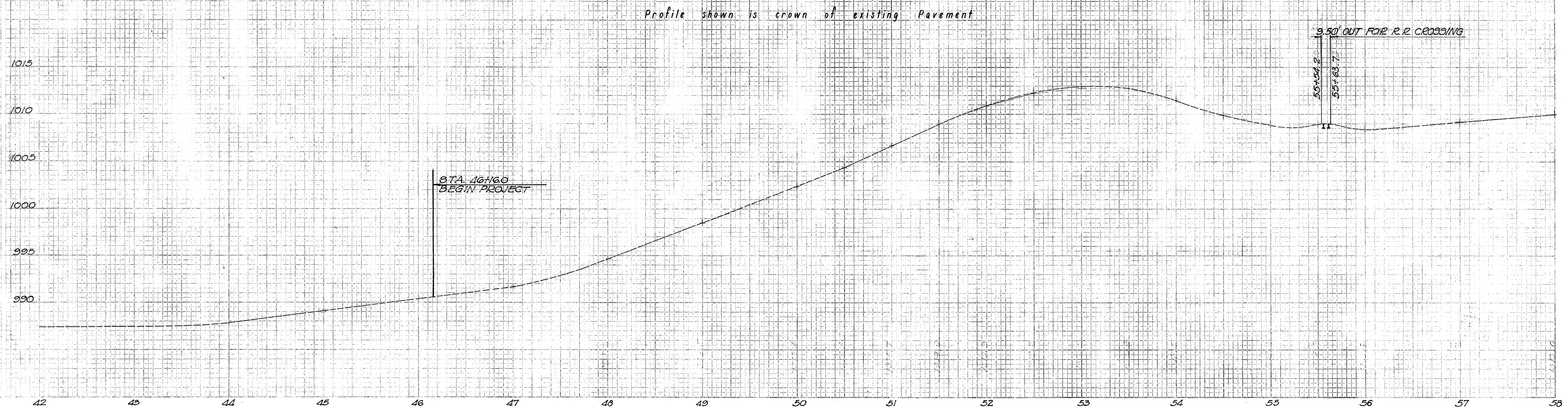
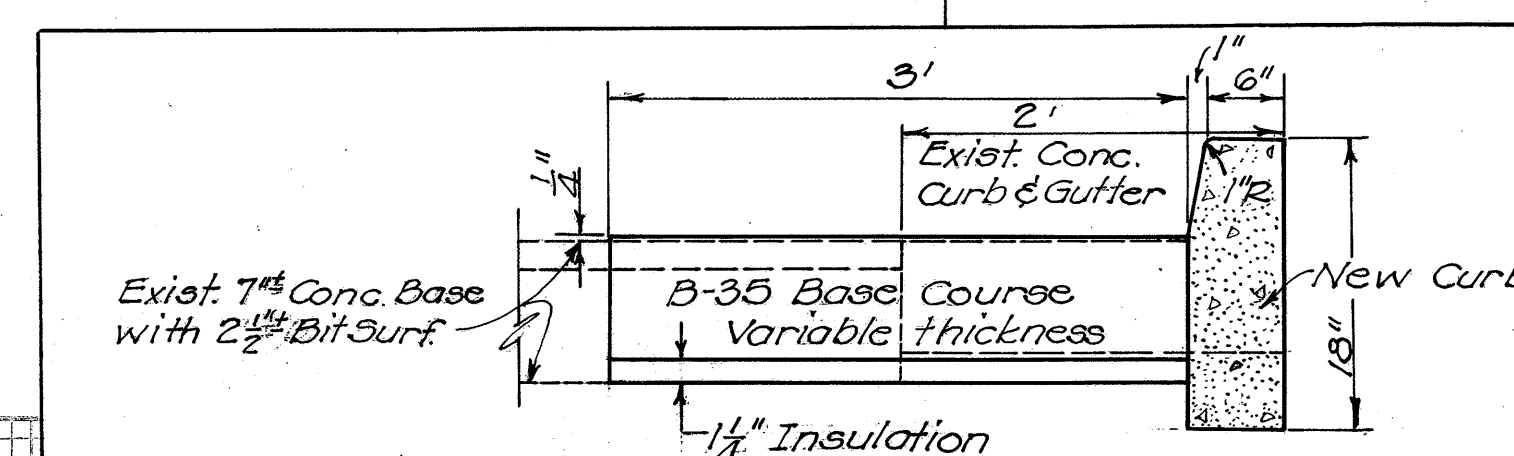
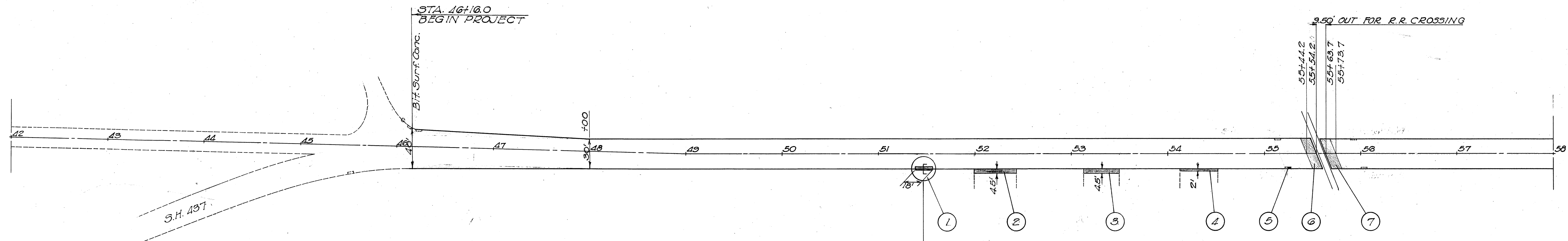
Necessary adjustment of structure walls shall be made with class "C" concrete. The cost of the concrete shall be included in the unit price bid for item I-8. Resetting existing castings.

TREE TRIMMING

Tree branches overhanging the roadway which are less than 20 feet above the finished grade line shall be cut off close to the boles, according to Sec. E-102, in a manner acceptable to the Division Landscape Architect, and the cost shall be included with Item E-1 Roadway Excavation.

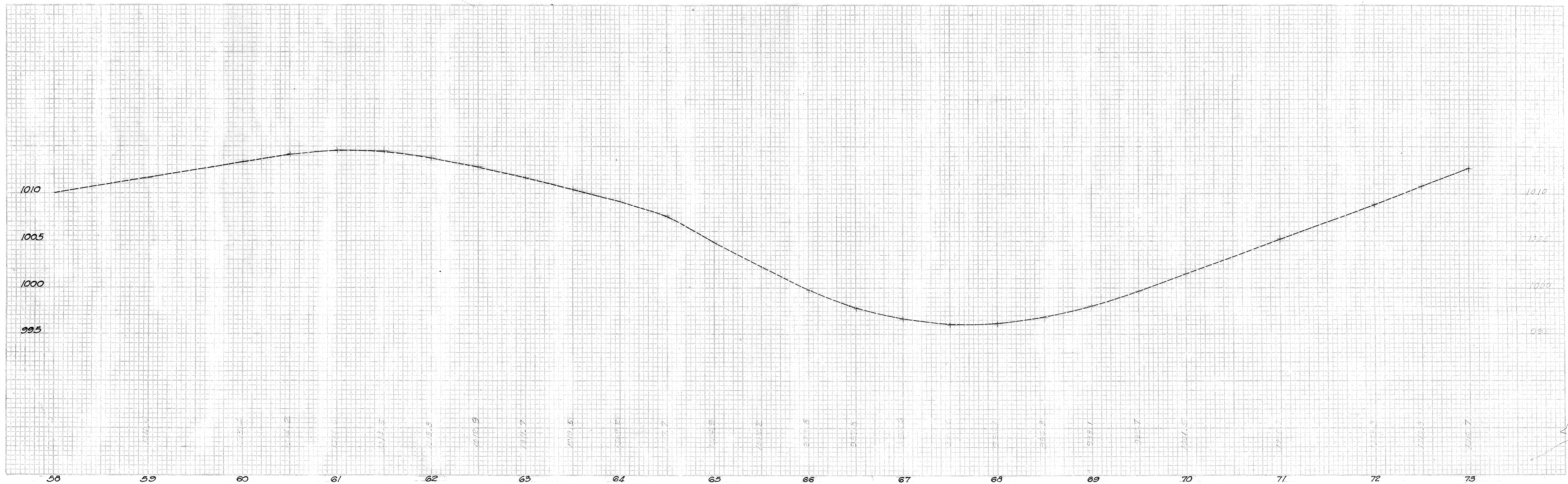
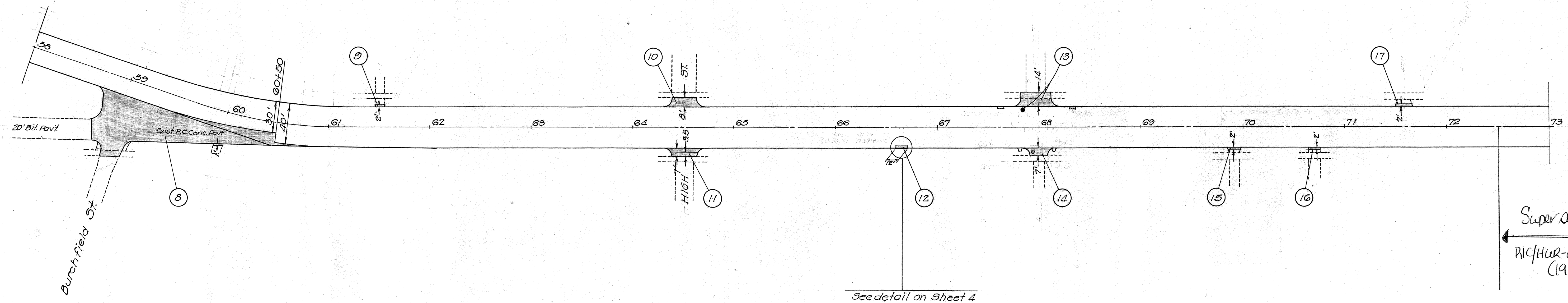
FED. RD. DIST. NO.	STATE	PROJECT	FISCAL YEAR	
	OHIO		1945	

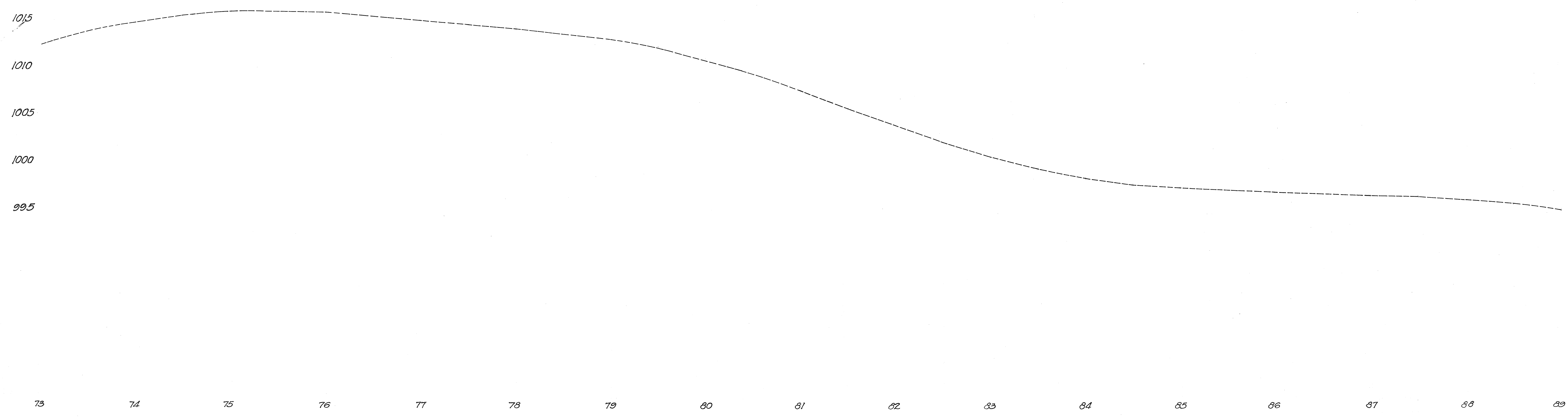
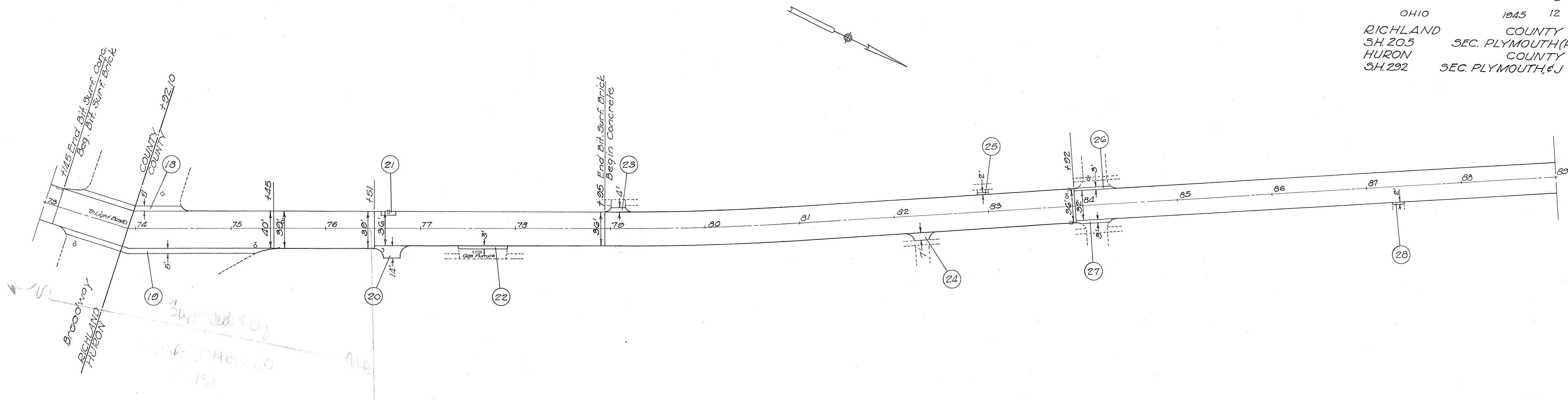
RICHLAND COUNTY
3.H. 205 SEC. PLYMOUTH (P)
HURON COUNTY
3.H. 292 SEC. PLYMOUTH (J)



NOTE SUPERSEDED BY

FED. RD. DIST. NO.	STATE	PROJECT	FISCAL YEAR	5 12
	OHIO		1945	
RICHLAND		COUNTY		
S.H. 205		SEC. PLYMOUTH (PT.)		
HURON		COUNTY		
S.H. 292		SEC. PLYMOUTH & J. (PT.)		

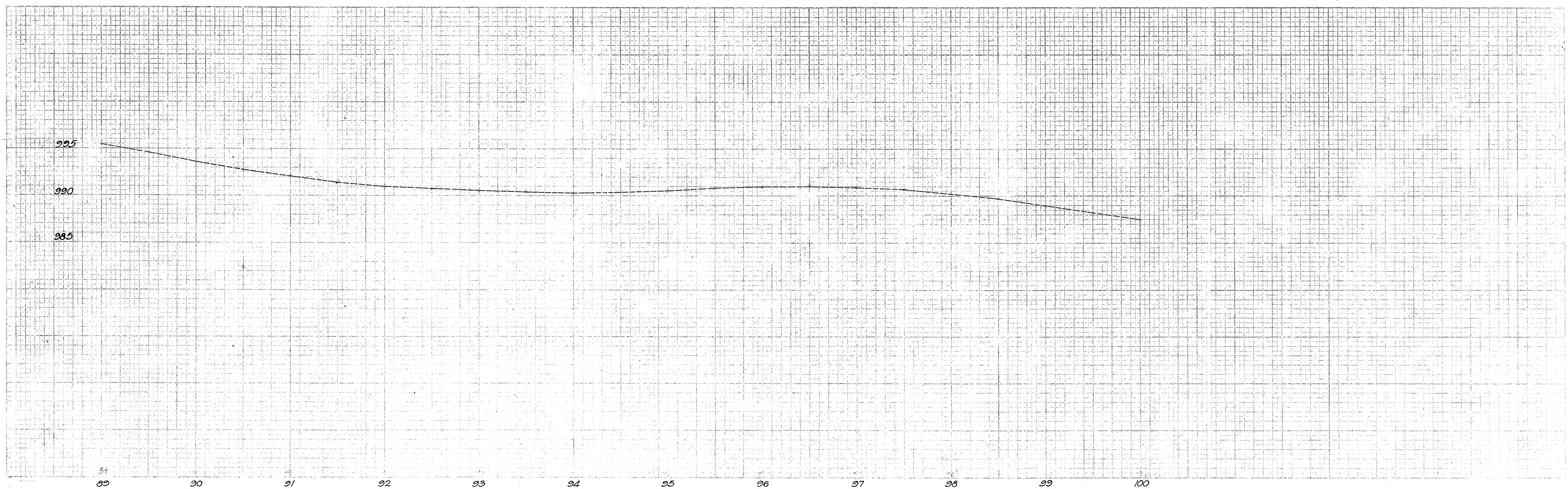
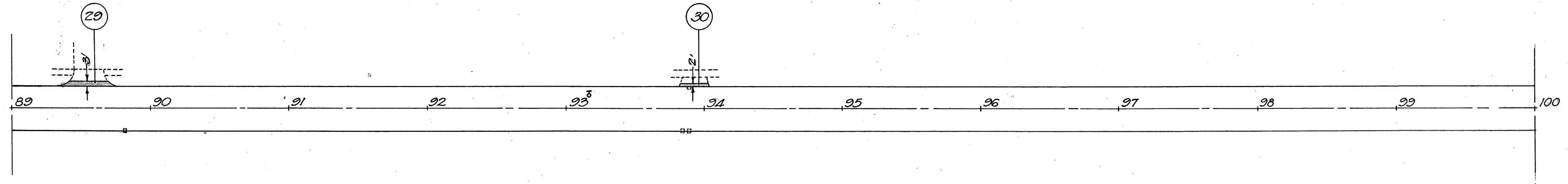
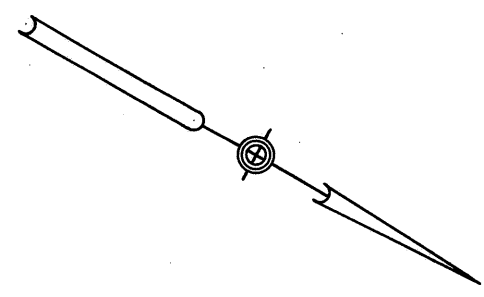


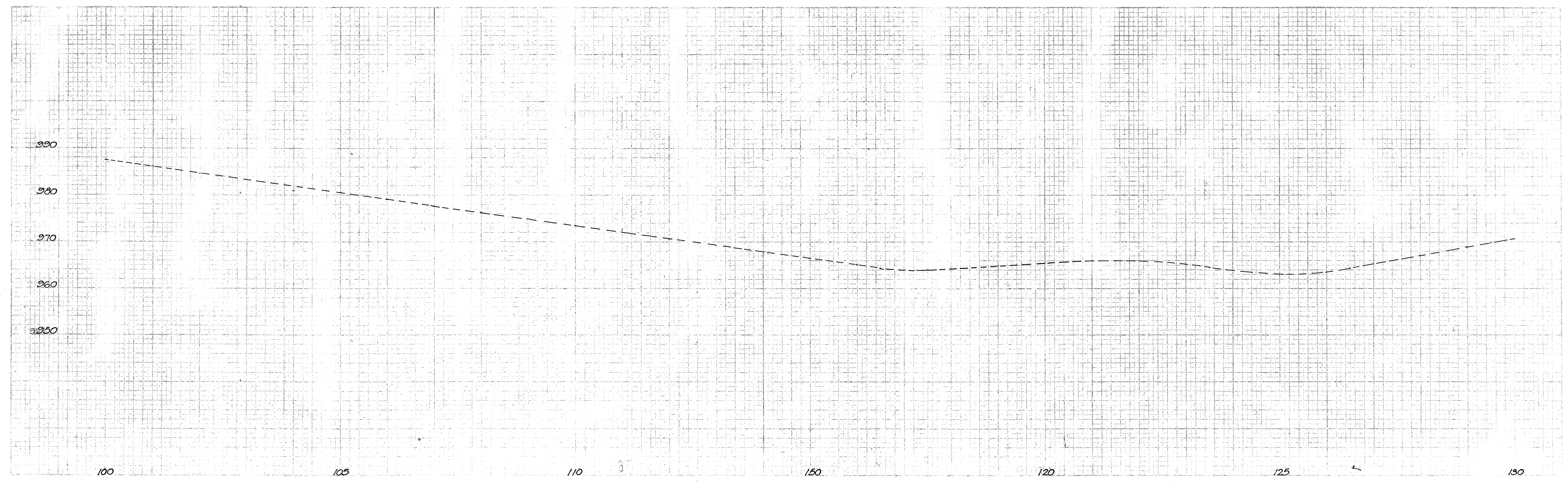
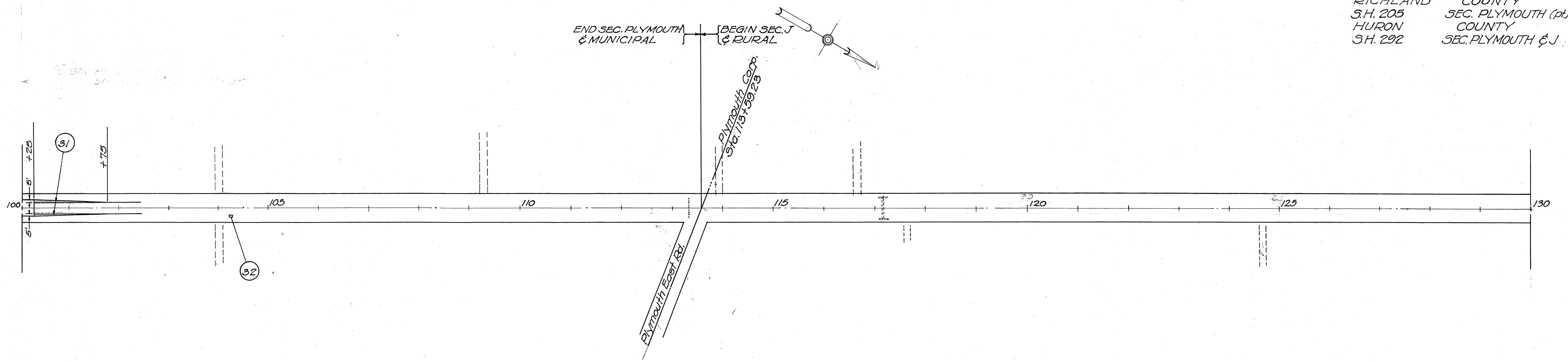


FED. RD. DIST. NO.	STATE	PROJECT	FISCAL YEAR
	OHIO		1945

7
12

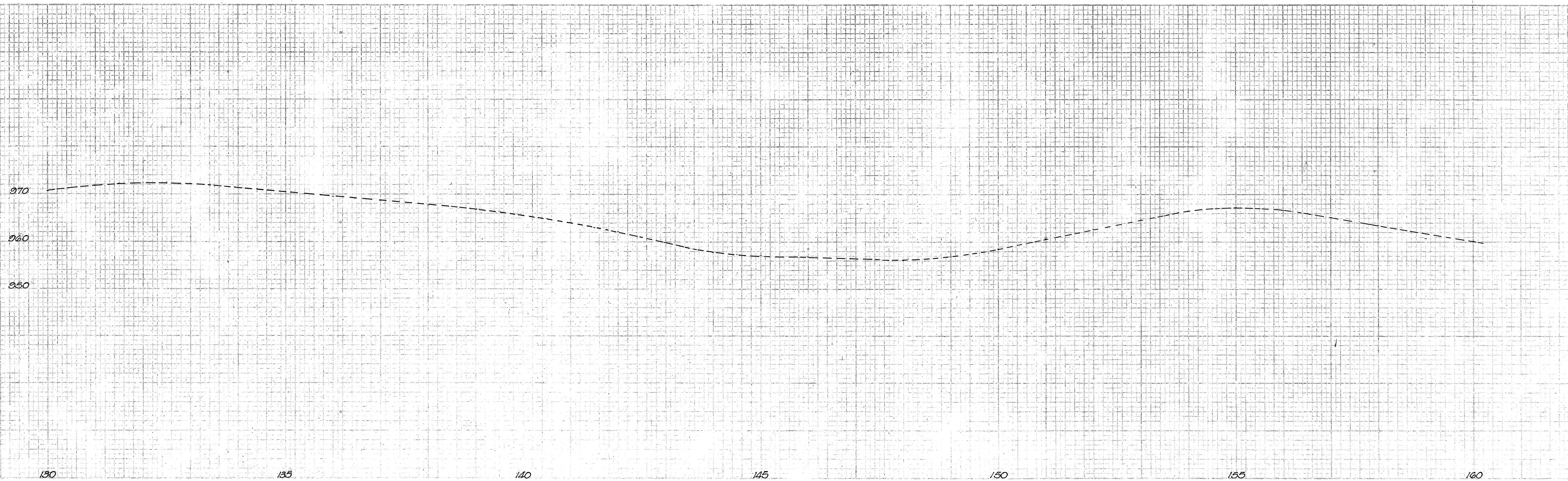
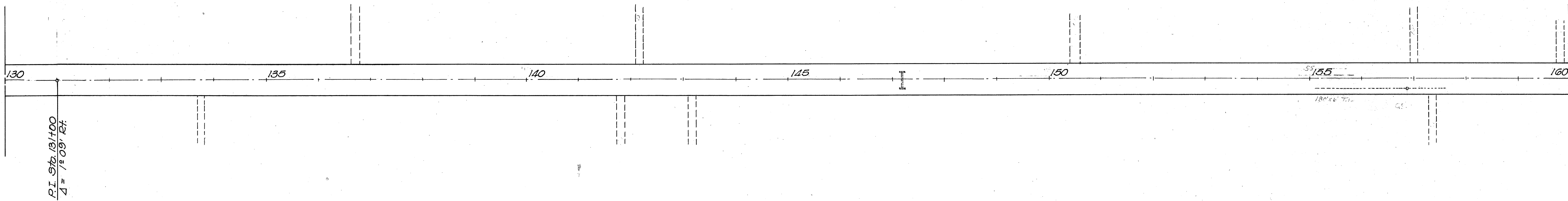
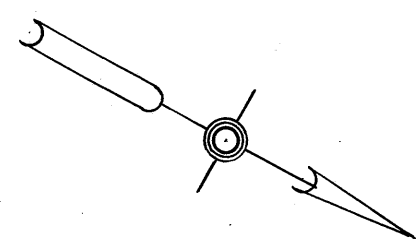
RICHLAND COUNTY
 S.H. 205 SEC. PLYMOUTH (PT)
 HURON COUNTY
 S.H. 292 SEC. PLYMOUTH, EJ





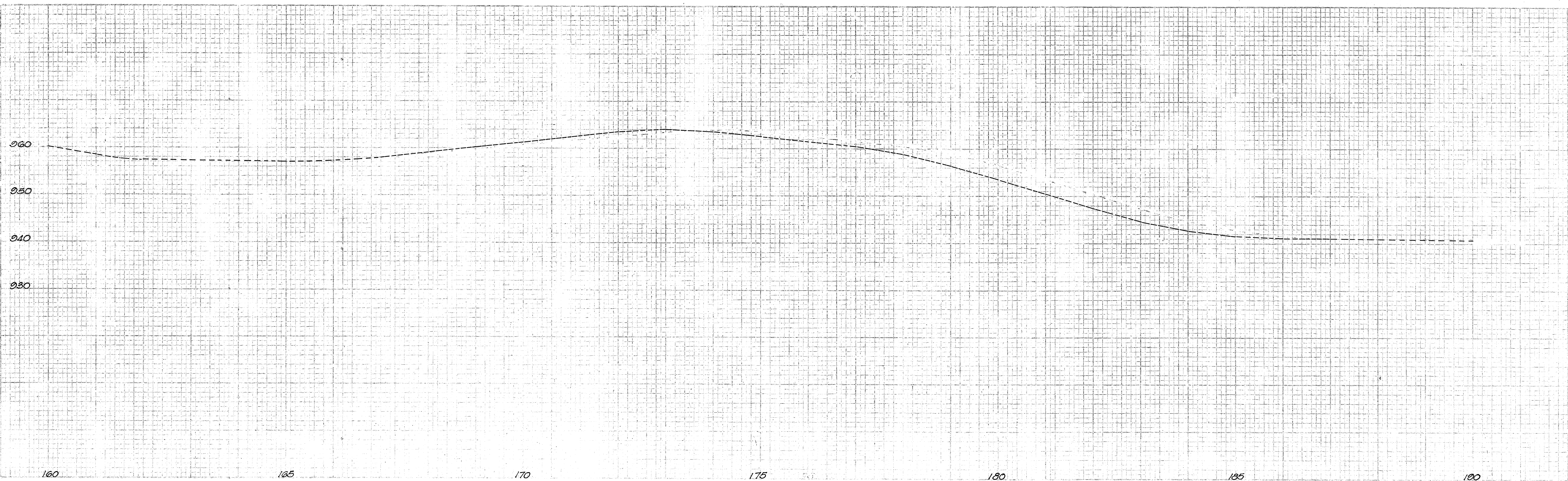
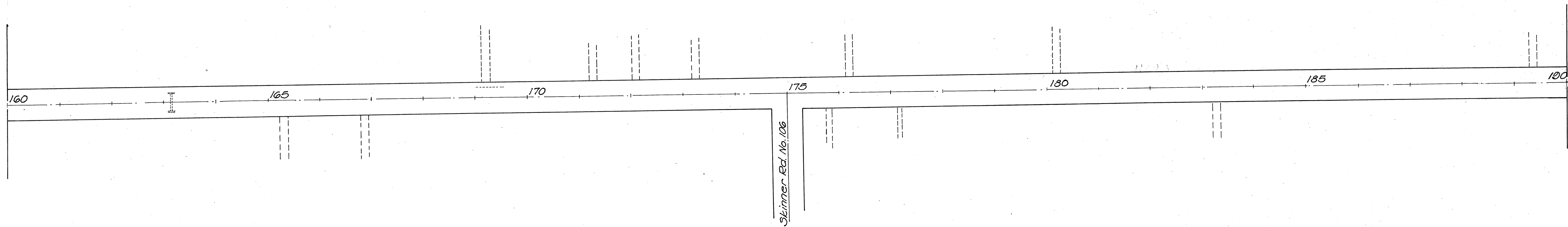
FED. RD. DIST. NO.	STATE	PROJECT	FISCAL YEAR	
	OHIO		1945	9 12

RICHLAND COUNTY
S.H. 205 SEC. PLYMOUTH (pt)
HURON COUNTY
S.H. 292 SEC. PLYMOUTH & J

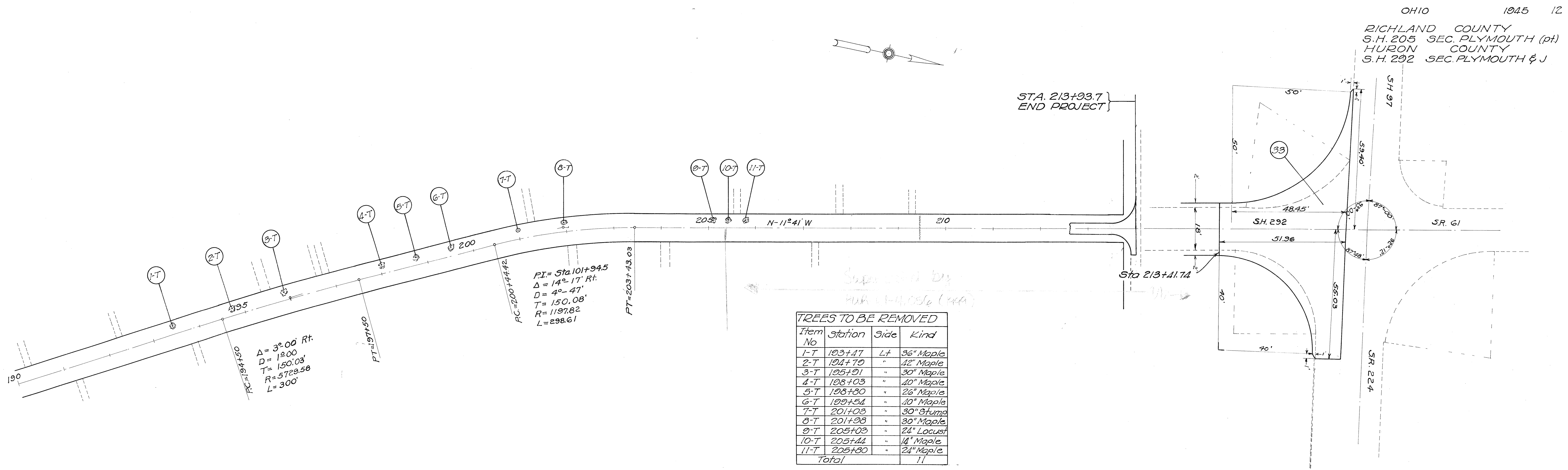


FED. RD. DIST. NO.	STATE	PROJECT	FISCAL YEAR	10 12
	OHIO		1945	

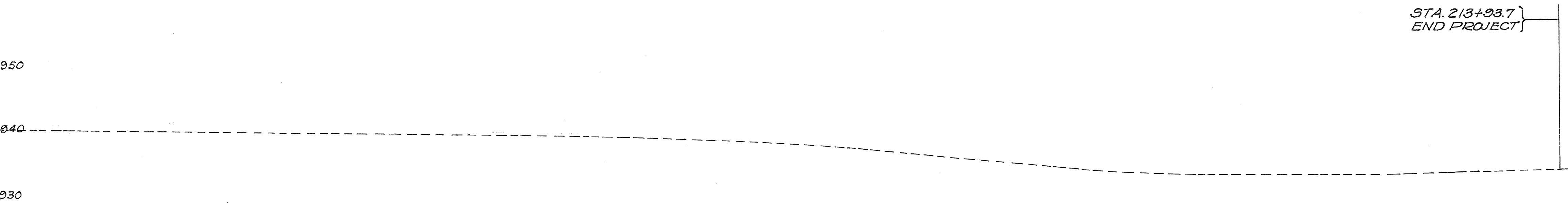
RICHLAND COUNTY
S.H. 205 SEC. PLYMOUTH (pt)
HURON COUNTY
S.H. 292 SEC. PLYMOUTH & J



NOTE SUPERSEDED BY HUR-61-4.056 (1999)



Profile shown is crown of existing Pavement



S.H.292 SEC. PLYMOUTH & J.

LINE	CALCULATIONS				Quantity		Units
	Municipal	Rural					
1	ASPHALTIC CONCRETE BASE COURSE						
2	MUNICIPAL						
3	Sheet	2	1334.23 X 5.0 + 9 X 3 + 36 =	61.8	Cu.Yds.		
4	"	2		125.0	Cu.Yds.		
5	Table	1		10.6	Cu.Yds.		
6	Total				197.4	Cu.Yds.	Use 198 - Cu.Yds.
7							
8	RURAL						
9	Sheet	2	9982.51 X 5.0 + 9 X 3 + 36	462.2	Cu.Yds.		
10	"	2		50.0	Cu.Yds.		
11	Table	1		6.7	Cu.Yds.		
12	Total =				518.9	Cu.Yds.	Use 519 - Cu.Yds.
13							
14	1 1/2" INSULATION COURSE						
15	MUNICIPAL						
16	Sheet	2	1334.23 X 5.0 + 9 =	741.2	Sq.Yds.		
17	"	2	Pav't. Replacement	600.0	Sq.Yds.		
18	Table	1		140.0	Sq.Yds.		
19	Total =				1451.2	Sq.Yds.	Use 1451 Sq.Yds.
20							
21	RURAL						
22	Sheet	2	9982.51 X 5.0 + 9	5545.8	Sq.Yds.		
23	"	2	Pav't. Replacement	300.0	Sq.Yds.		
24	Table	1		80.0	Sq.Yds.		
25	Total				5925.8	Sq.Yds.	Use 5926 Sq.Yds.
26							
27	1" ASPHALTIC CONCRETE SURFACE COURSE TYPE B						
28	MUNICIPAL						
29	Sheet	2	184.0 X 35 + 9 =	715.6	Sq.Yds.		
30	"	2	1240.5 X 30 + 9 =	4135.0	Sq.Yds.		
31	"	2	1495.0 X 40 + 9 =	6044.4	Sq.Yds.		
32	"	2	106.0 X 39 + 9 =	459.3	Sq.Yds.		
33	"	2	741.0 X 36 + 9 =	2964.0	Sq.Yds.		
34	"	2	1633.0 X 32 + 9 =	5806.2	Sq.Yds.		
35	Table	1		1092.0	Sq.Yds.		
36	Area =				21816.5	Sq.Yds.	
37	Line 36		21816.50 X 1 + 36 =	606.0	Cu.Yds.	Use 606	Cu.Yds.
38							
39	1 1/2" ASPHALTIC CONCRETE SURFACE COURSE TYPE A						
40	MUNICIPAL						
41	Sheet	2	1334.23 X 22 + 9 =	3261.5	Sq.Yds.		
42	Table	1		83.0	Sq.Yds.		
43	Area =				3344.5	Sq.Yds.	
44	Line 43		3344.5 X 1.25 + 36 =	116.1	Cu.Yds.	Use 116	Cu.Yds.
45							
46	RURAL						
47	Sheet	2	9982.51 X 22 + 9 =	24401.7	Sq.Yds.		
48	Table	1		286.0	Sq.Yds.		
49	Area =				24687.7	Sq.Yds.	
50	Line 49		24687.7 X 1.25 + 36	857.2	Cu.Yds.	Use 857	Cu.Yds.
51							
52	ASPHALTIC CONCRETE LEVELING COURSE						
53	MUNICIPAL						
54	1" - Lines 29 to 34 (incl) 20724.5 X 1 + 36 =				575.7	Cu.Yds.	
55	Line 41		3261.5 X 1 + 36 =	90.6	Cu.Yds.		
56	Table 1		683.0 X 1 + 36 =	19.0	Cu.Yds.		
57	3" - Sheet	2	1334.23 X 4.5 + 9 X 3 + 36	55.6	Cu.Yds.		
58	Table	1	83 X 3 + 36	6.9	Cu.Yds.		
59	Additional to correct pav't. irregularities						
60	Table	1		8.0	Cu.Yds.		
61	Sta. 46+16 to Sta. 78+9.5 (est.)				180.0	Cu.Yds.	
62	Sta. 78+9.5 to Sta. 100+25 (est.)				163.0	Cu.Yds.	
63	Sta. 100+25 to Sta. 113+59.23 (est.)				37.0	Cu.Yds.	
64	Total =				1135.8	Cu.Yds.	Use 1136 Cu.Yds.
65							
66	RURAL						
67	1" - Line 49		24687.7 X 1 + 36	685.8	Cu.Yds.		
68	3" - Sheet	2	9982.51 X 4.5 + 9 X 3 + 36	415.9	Cu.Yds.		
69	Table	1	76 X 3 + 36	6.3	Cu.Yds.		
70	Additional to correct pav't. irregularities						
71	Sta. 113+59.23 to Sta. 213+93.7				280.0	Cu.Yds.	
72							
73	Add. to remove crown on Curve, Sta. 193+44 to Sta. 204+47				28.0	Cu.Yds.	
74	Total =				1416.0	Cu.Yds.	Use 1416 Cu.Yds.
75							
76	BITUMINOUS PRIME COAT						
77	MUNICIPAL						
78	Line 36		21816.5 X 1.0 =	2181.6	Gals.		
79	Sheet	2	1334.23 X 18 + 9 X 1.0	266.8			
80	Total				2448.4	Gals.	Use 2448 Gals.
81							
82	RURAL						
83	Sheet	2	9982.51 X 18 + 9 X 1.0	1996.5	Gals.		
84	Table	1	210 X 1.0	21.0	Gals.		
85	Total =				2017.5	Gals.	Use 2018 Gals.
86							
87	SEALING (ONLY) OF EXIST. PAV'T. EDGE						
88	MUNICIPAL						
89	Sheet	2	1334.23 X 2	2668.5	Lin.Ft.		
90	Table	1		82.0	Lin.Ft.		
91	For Pav't. Replacement (est.)				3000.0	Lin.Ft.	
92	Total				5750.5	Lin.Ft.	Use 5751 Lin.Ft.
93							
94	RURAL						
95	Sheet	2	9982.51 X 2	19965.0	Lin.Ft.		
96	Table	1		80.0	Lin.Ft.		
97	For Pav't. Replacement (est.)				1500.0	Lin.Ft.	
98	Total				21545.0	Lin.Ft.	21545 Lin.Ft.

LINE	CALCULATIONS (CONT'D)					Quantity Munic. Rural	Units
99	ROADWAY EXCAVATION						
100	MUNICIPAL						
101	Sheet 2	1334.23 X (4 est. EA) ÷ 27 =	198	Cu.Yds.			
102	Table 1		20	Cu.Yds.			
103		Total	218	Cu.Yds	Use	220	
104							Cu.Yds.
105	RURAL						
106	Sheet 2	9982.51 X (4 est. EA) ÷ 27 =	1481	Cu.Yds.			
107	Table 1		16	Cu.Yds.			
108		Total	1497	Cu.Yds.	Use	1500	
						Cu.Yds.	

Area No.	1" Surf. Type B Sq. Yds.	1 1/2" Surf. Type A Sq. Yds.	1" Min. Level. Sq. Yds.	3" Level Sq. Yds.	Base Cu. Yds.	1 1/2" Insul. Sq. Yds.	Prime Coat Sq. Yds.	Seal (only) Lin. Ft.	Pav't Rem'l Sq. Yds.	Curb & G Rem'l Lin. Ft.	Conc. Curb Lin. Ft.	Surf. Rem'l Sq. Yds.	Berm. Mat'l. Cu. Yds.	C.B. Cast. Reset Units	Excav. Cu. Yds.	Add. Level Cu. Yds.	M.H. Cost Reset Units
MUNICIPAL																	
1					14	6		42	2	18	18						
2	22						22										
3	19						19										
4	9						9						2				
5														1			
6												30					
7												30					
8	600		600				600									8	
9	2						2										
10	25						25										
11	24						24										
12					0.9	4		30	1	12	12	10					
13	51						51										1
14	18						18										
15	3						3										
16	3						3										
17	4						4										
18	70						70										
19	120						120										
20	37						37										
21													7				
22	17						17										
23	9						9										
24	14						14										
25	2						2										
26	13						13										
27	12						12										
28	2						2										
29	12						12										
30	4						4										
31		83	83	83	83	100		10							20		
32														1			
Various Sta.												223	10				
Total Munic.	1092	83	683	83	10.6	110	1092	82	3	30	30	300	12	2	20	8	1 X
RURAL																	
33		286	286	76	67	80	210	80							16		
Various Sta.													100				
Total Rural		286	286	76	6.7	80	210	80					100		16		

SUMMARY							
Item	Quantity		Totals	Units	Description	Reference	
No.	Munic.	Rural					
E-1	220	1500	1720	Cu.Yds.	Roadway Excavation, as per plan	Calc. Line 103 & 108	
E-4	200	500	700	Cu.Yds.	Borrow (Contractor to furnish est.)		
E-8	603	300	903	Sq.Yds.	Removal & Disposal of Existing Pavement.	Sheet 2 Table 1	
E-8	300		300	Sq.Yds.	Removal & Disposal of Existing Wearing Course.	Table 1	
E-8	30		30	Lin.Ft.	Removal & Disposal of Existing Concrete Curb & Gutter.	Table 1	
E-9		11	11	Units	Removal of Trees and Stumps.	Sheet 1	
E-10	5751	21545	27296	Lin.Ft.	Sealing (only) of Existing Pavement Edge.	Calc. Line 32 & 38	
I-8	2		2	Units.	Catch Basin Castings reset.	Table 1	
I-8	1		1	Units.	Manhole Castings reset.	Table 1	
I-12	30		30	Lin.Ft.	Concrete Curb as per plan	Table 1	
I-19	1451	5926	7377	Sq.Yds.	1 1/2" Insulation Course	Calc. Line 19 & 25	
I-117	12	100	112	Cu.Yds.	Side Approaches, Mail Box Turnouts & Berm Material	Table 1	
B-35	198	519	717	Cu.Yds.	Asphaltic Concrete Base Course	Calc. Line 6 & 12	
B-35	1136	1416	2552	Cu.Yds.	Asphaltic Concrete Leveling Course	Calc. Line 64 & 74	
T-30	2448	2018	4466	Gals.	Bituminous Prime Coat Sec. M-5.5 M5-1, including Sand Cover.	Calc. Line 80 & 85	
T-35	116	857	973	Cu.Yds.	Asphaltic Concrete Surface Course Type A	Calc. Line 44 & 50	
T-35	606		606	Cu.Yds.	Asphaltic Concrete Surface Course Type B	Calc. Line 37	
E-305	2100	15600	17700	Sq.Yds.	Seeding & Protecting Roadway Areas	Sheet 3	
L-9	372	2800	3172	Lbs.	Commercial Fertilizer (4-12-4)	Sheet 3	