

CL MONUMENTS JEF-213-15.18

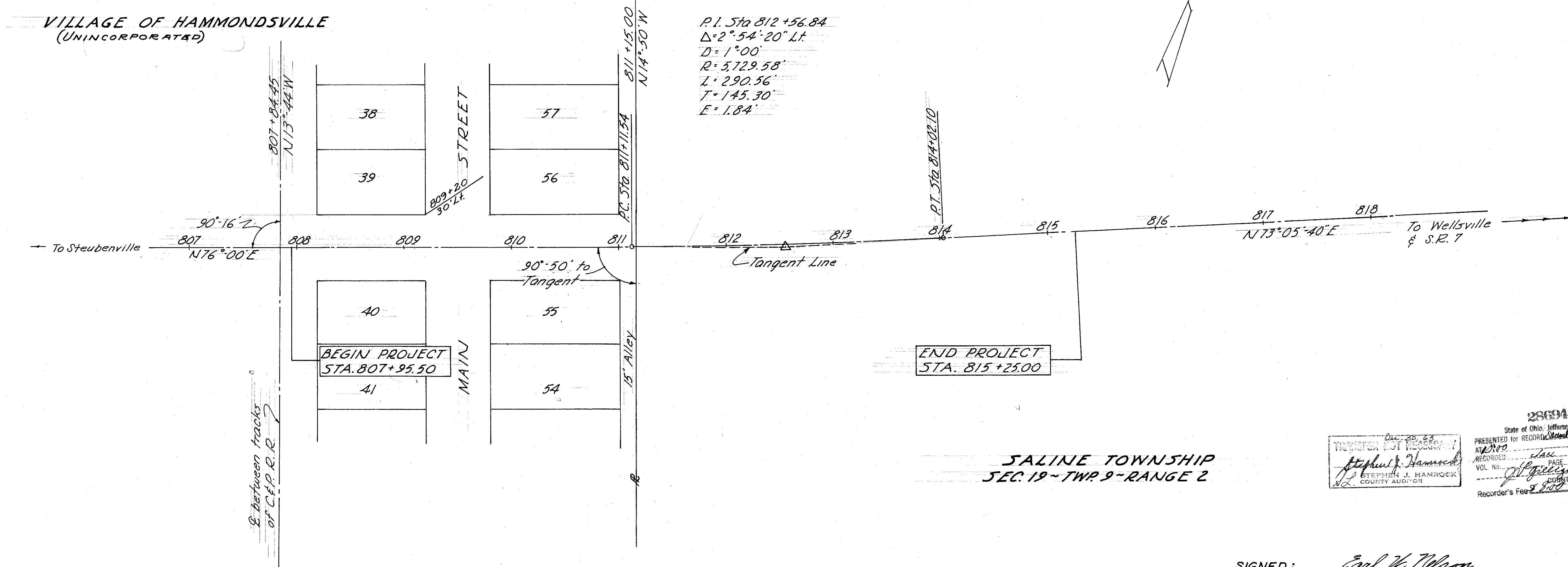
<b>POINT NAME</b>	<b>NORTHING</b>	<b>EASTING</b>	<b>ELEVATION</b>	<b>CODE</b>	<b>STATION</b>	<b>OFFSET</b>
P1001	329793.293	2467459.22	692.627	MONBOX	815+19.96	-0.018
P1002	329756.666	2467347.214	690.448	MONBOX	814+02.12	0
P1003	329670.41	2467057.706	689.191	MONBOX	811+00.00	0
P1004	329604.789	2466816.477	690.494	MONBOX	808+50.00	0.106

# LOCATION PLAN

## JEF-213-15.30

### 1963

SCALE: 1" = 50'



P.I. Sta 812+56.84  
 $\Delta = 2^{\circ} - 54' - 20''$  Lt.  
 $D = 1^{\circ} 00'$   
 $R = 5729.58'$   
 $L = 290.56'$   
 $T = 145.30'$   
 $E = 1.84'$

BEGIN PROJECT  
 STA. 807+95.50

END PROJECT  
 STA. 815+25.00

SALINE TOWNSHIP  
 SEC. 19 - TWP. 9 - RANGE 2

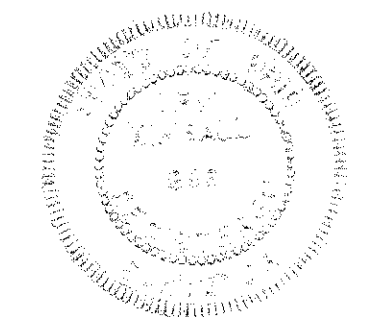
286142  
 State of Ohio, Jefferson County, ss  
 PRESENTED FOR RECORD Dec 30 1963  
 AT 11:00 AM  
 RECORDED Dec 22 1963  
 VOL. NO. 32 PAGE 32  
 COUNTY RECORDER  
 Recorder's Fee 2.50

SIGNED: Earl W. Nelson  
 DIVISION DEPUTY DIRECTOR  
 DATE: 12-12-63

I hereby certify that this plat is a true delineation of a survey made for the Ohio Department of Highways in 1963.  
Earl Campbell  
 REGISTERED SURVEYOR  
 DATE: 12-12-63

CENTER LINE MONUMENT ASSEMBLIES  
 WILL BE SET ON CENTER LINE DURING  
 CONSTRUCTION AT THE FOLLOWING STATIONS:

- P.O.T. Sta. 808+50
- P.O.T. Sta. 811+00
- P.T. Sta. 814+02.10
- P.O.T. Sta. 815+20



# SALINE TOWNSHIP SEC. 19-TWP. 9-N-RANGE 2-W

FED. RD. DIVISION	STATE	PROJECT	19 19
2	OHIO		

JEF-213-15.30

RIGHT OF WAY PLAN 1  
1

**VILLAGE OF HAMMONDSVILLE**  
(UNINCORPORATED)  
PLAT BOOK No. 1, PAGE 4

**BEGIN WORK**  
STA. 807+29

**BEGIN PROJECT**  
STA. 807+95.50

**END WORK**  
STA. 815+45

**END PROJECT**  
STA. 815+25

**VILLAGE OF HAMMONDSVILLE**  
**PROPERTY OWNERS**

William H. & Geraldine Burton	LOT NUMBERS #39, #40 & N 1/2 #41
Lula P. Boehm	#54 & #55
Robert Paisley, et al.	#36, #37, #38 & #56

SUMMARY OF ADDITIONAL RIGHT OF WAY REQ'D.											
Parcel No	OWNERS	Deed Record		Deed Area	To Be Acquired Land	Residue Land	Residue Bldgs.	Residue Left	Residue Right	Sheet No	REMARKS
		Volume	Page								
1	William H. & Geraldine Burton	403	540	0.14A	0.07A	Yes	0.07A			1	
1-WA	"			0.14A	0.08A	Yes		0.06A		1	Bldg. Rmvl.
2	"	403	540	0.14A	0.08A	Yes		0.06A		1	
2-WA	"									1	Bldg. Rmvl.
2-A-WA	"									1	Bldg. Rmvl.
3	Robert Paisley, Et Al.	216	112	0.16A	0.07A		0.09A			1	
3-SL	"				0.02A					1	
4	Lula P. Boehm	246	732	0.33A	0.10A	Yes		0.23A		1	
4-T	"				0.05A					1	
5	Edwin K. Neely	325	582	0.33A	0.04A		0.29A			1	
5-X	"				0.15A					1	
5-SL	"				0.06A					1	
6-X	Vance Paisley	291	304	3.65A	0.15A		3.65A			1	
7	Fred A. Jarvis, Et Al.	193	305	6.42A	0.23A		0.31A			1	
8	"				0.19A			5.69A		1	
8-X	"				0.31A					1	
8-T	"				0.24A					1	
9-X	Winifred M. & Gale Cronin				0.03A					1	

Fred A. Jarvis, et al.

①  
WILLIAM H. & GERALDINE BURTON  
1-T.B.A. ———— 0.07 A<sup>2</sup>  
1-W.A.

②  
WILLIAM H. & GERALDINE BURTON  
2-T.B.A. ———— 0.08 A<sup>2</sup>  
2-W.A.  
2-A-WA.

③  
ROBERT PAISLEY, ET AL.  
3-T.B.A. ———— 0.07 A<sup>2</sup>  
3-S.L. ———— 0.02 A<sup>2</sup>

④  
LULA P. BOEHM  
4-T.B.A. ———— 0.10 A<sup>2</sup>  
4-T ———— 0.05 A<sup>2</sup>

⑤  
EDWIN K. NEELY  
5-T.B.A. ———— 0.04 A<sup>2</sup>  
5-X ———— 0.15 A<sup>2</sup>  
5-S.L. ———— 0.06 A<sup>2</sup>

⑥  
VANCE PAISLEY  
6-X ———— 0.15 A<sup>2</sup>

⑦  
FRED A. JARVIS, ET AL.  
7-T.B.A. ———— 0.23 A<sup>2</sup>

⑧  
FRED A. JARVIS, ET AL.  
8-T.B.A. ———— 0.19 A<sup>2</sup>  
8-X ———— 0.31 A<sup>2</sup>  
8-T ———— 0.24 A<sup>2</sup>

⑨  
Winifred M. & Gale Cronin  
9-X ———— 0.03 A<sup>2</sup>

**COMPLETION DATE:**

REVISIONS:

