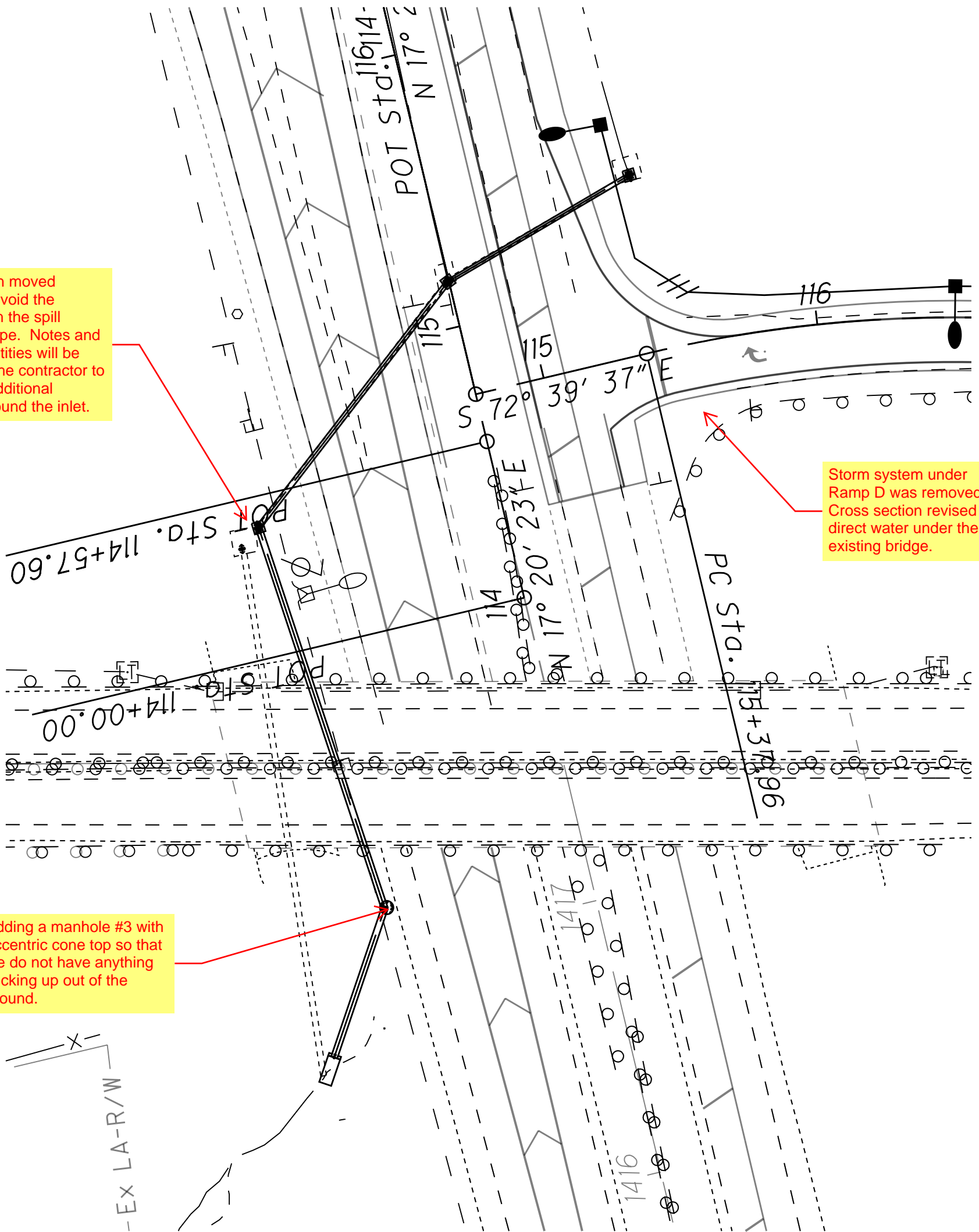


SR 7/527 INTERCHANGE STORM SYSTEM CHANGES TO REMOVE CONDUIT FROM UNDER THE EXISTING BRIDGE SPILL THROUGH SLOPE

Catch basin moved slightly to avoid the concrete on the spill through slope. Notes and minor quantities will be added for the contractor to do some additional grading around the inlet.

Storm system under Ramp D was removed. Cross section revised to direct water under the existing bridge.

Adding a manhole #3 with eccentric cone top so that we do not have anything sticking up out of the ground.



- Ex LA-R/W

DRAFT - LAW-7-2.17 (75923)

SR 7/527 INTERCHANGE STORM SYSTEM  
 CHANGES TO REMOVE CONDUIT FROM  
 UNDER THE EXISTING BRIDGE SPILL  
 THROUGH SLOPE

