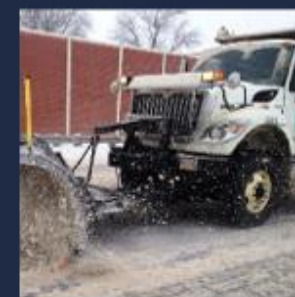
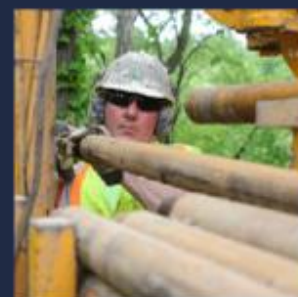
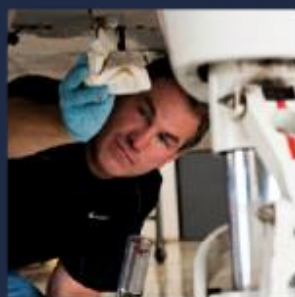
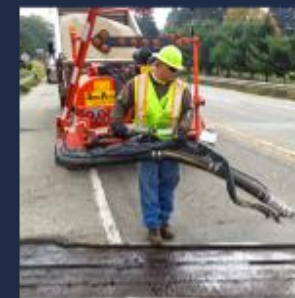
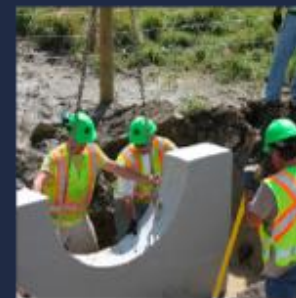


LAW-7-2.17 (CHESAPEAKE BYPASS)

PREBID MEETING (NOVEMBER 13, 2024)



OHIO DEPARTMENT OF
TRANSPORTATION

LAW-7-2.17

PREBID MEETING

Tom Barnitz, P.E.
ODOT Project Manager

PRESENTATION OVERVIEW

- **Welcome & Housekeeping** (Recorder, hold questions, minutes, PP, restrooms)
- **ODOT & Consultant Team Introductions**
- **Project Location and Brief History**
- **Current Project Overview & Status**
- **Project Scope**
- **Unique Items**
- **Question and Answer Session** (State your Name and Company prior to question)



ODOT TEAM INTRODUCTIONS

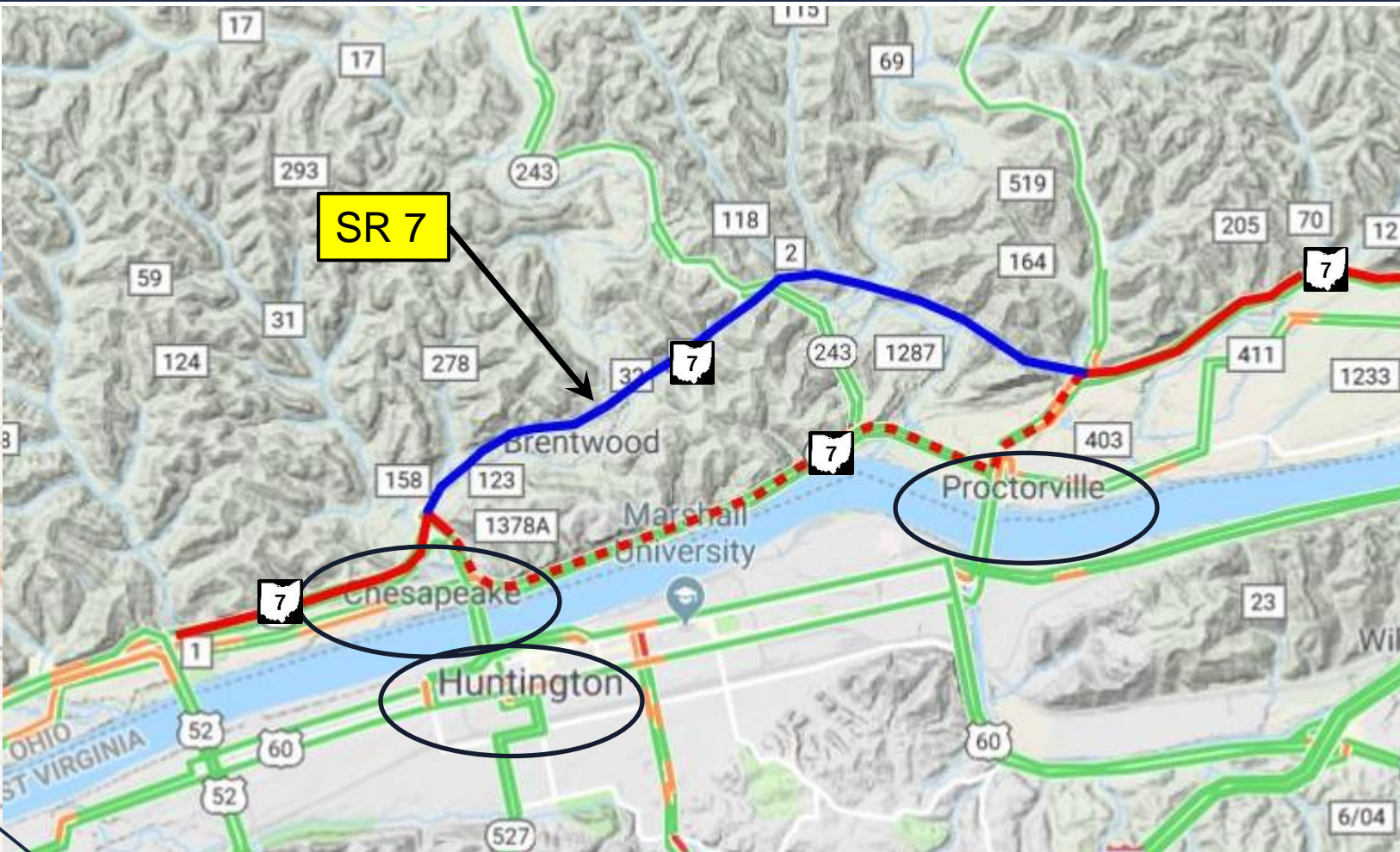
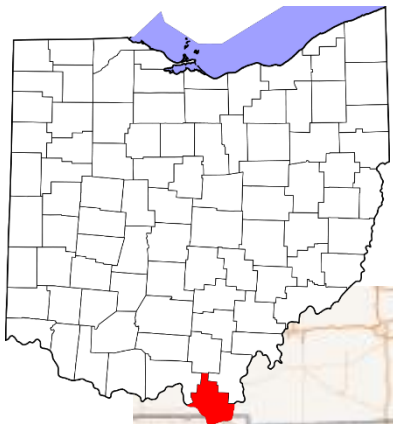
ODOT District 9

- Mike Dombrowski, Deputy Director
- Christopher Pridemore, Capital Programs Admin.
- Dan Frazee, Real Estate Administrator
- Tom Barnitz, Project Manager
- Paul Maravy, District Construction Engineer
- Chris Capper, Area Construction Engineer
- Mikaela Bruning, Public Information Officer
- Others in Attendance

Consultant Team

- Tom Morman (Stantec)
- Angie Boyce (Stantec)- roadway
- Eric Kistner (Stantec) - geotechnical
- Brandon McNeal (Stantec) - structures

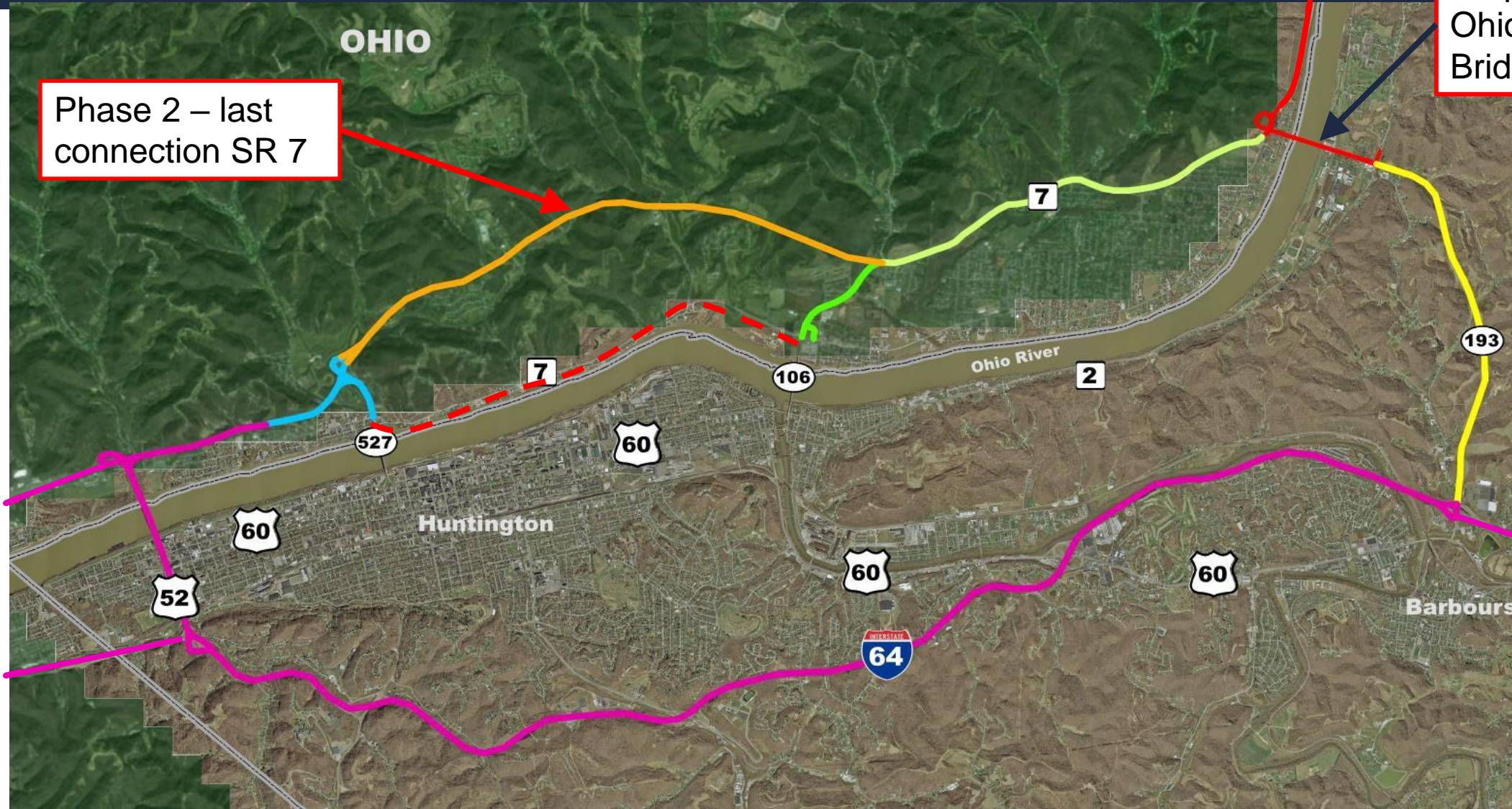
PROJECT LOCATION



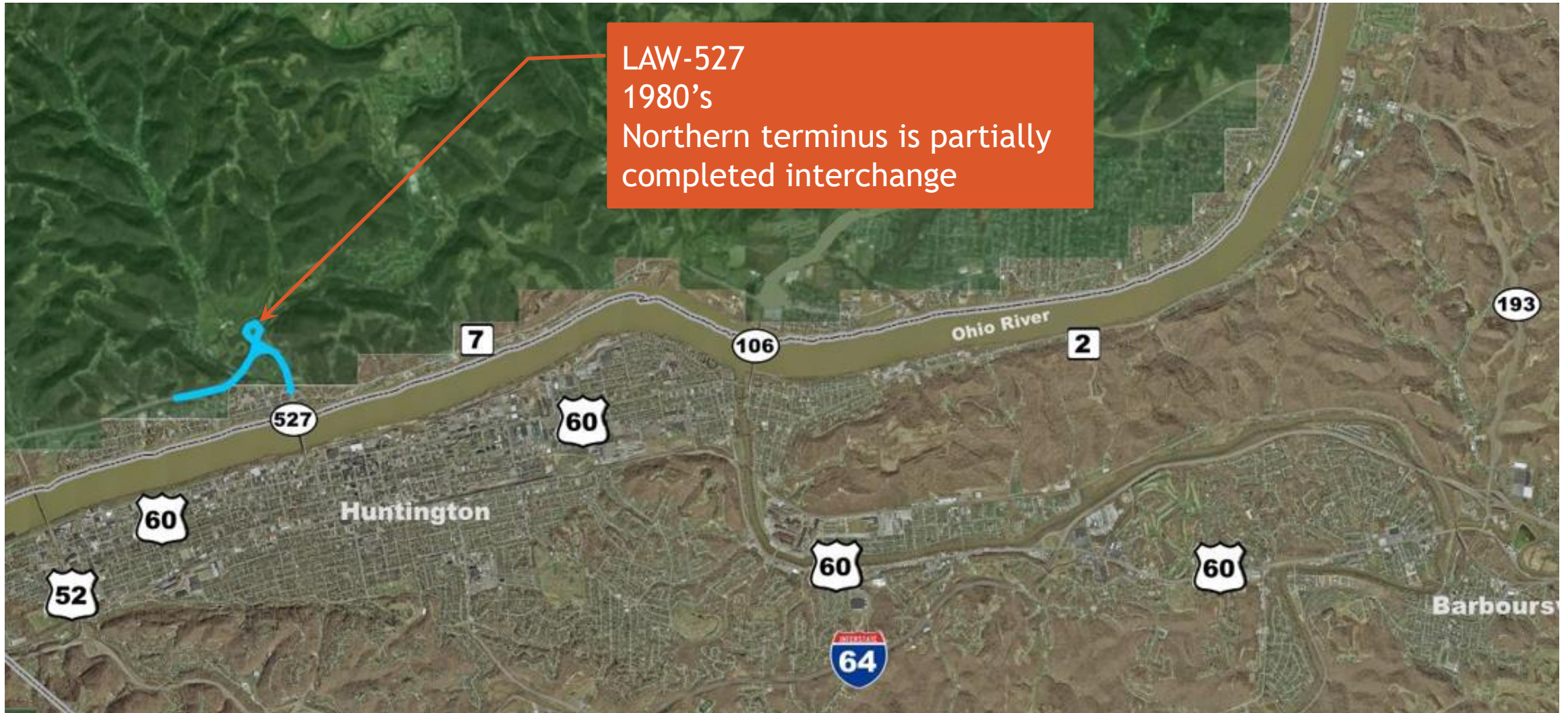
SR7 converted to US52

SR7 – Ohio's longest state route – 336 mi

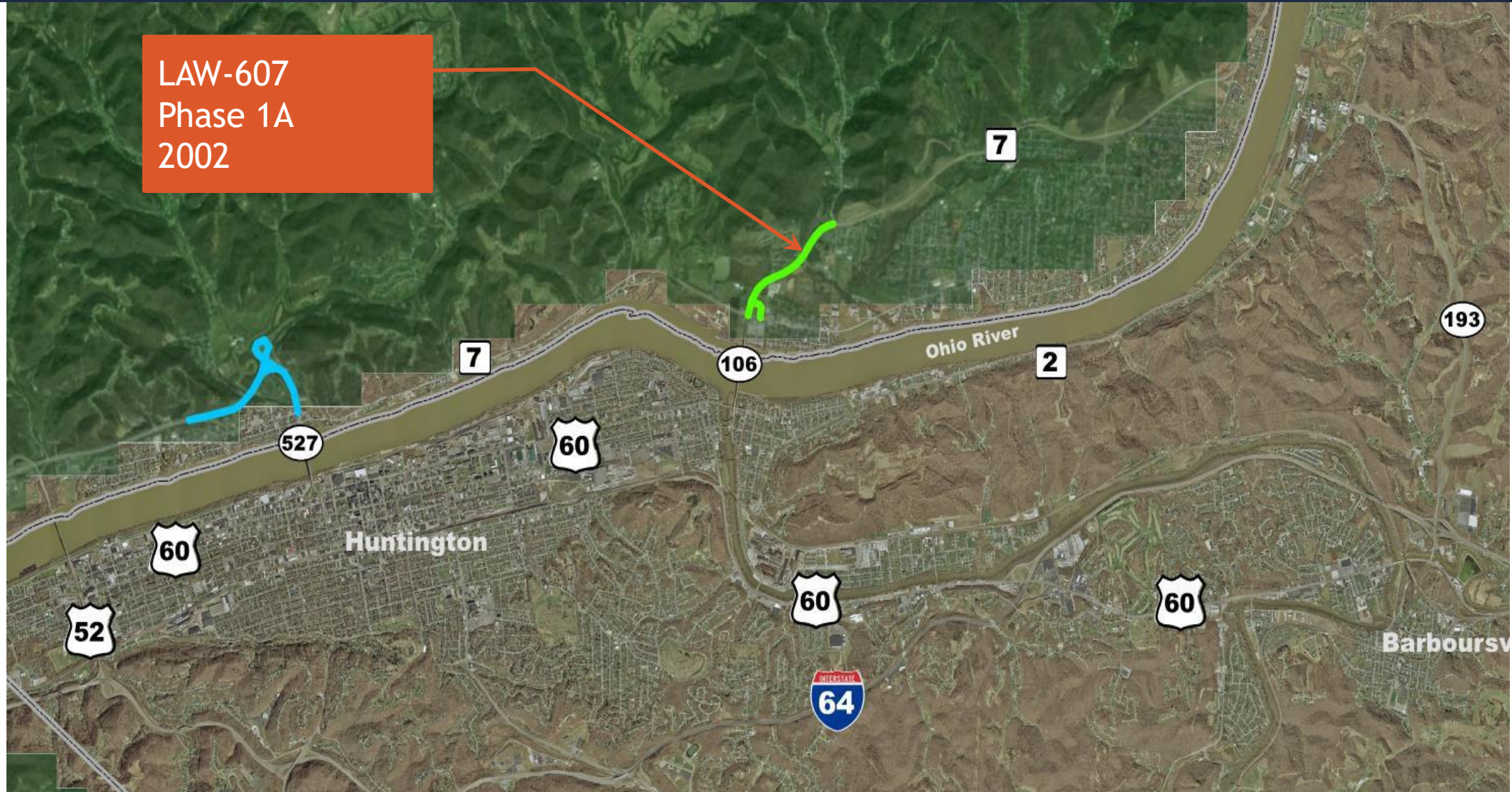
REGIONAL ROAD NETWORK



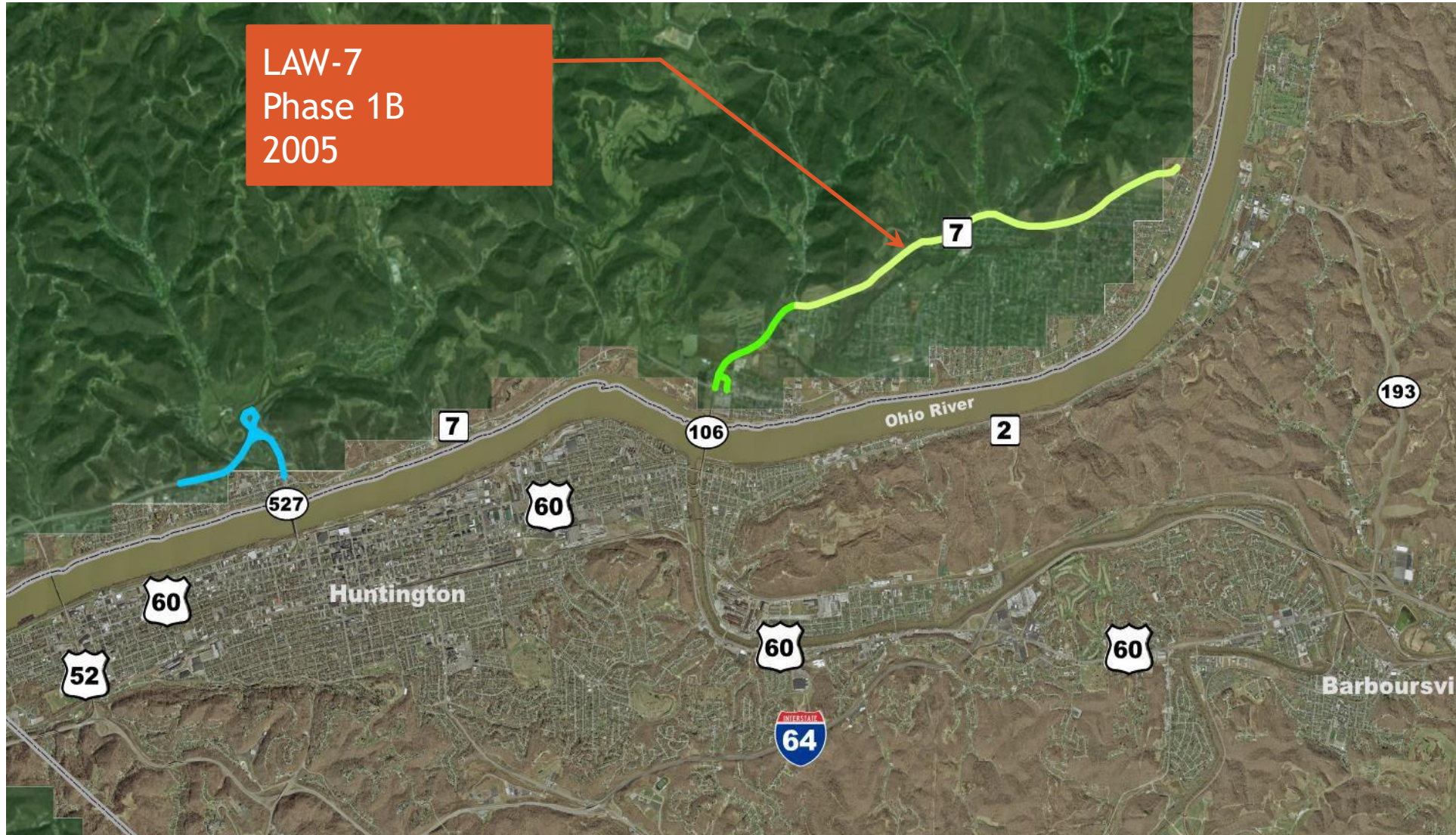
STATUS OF CHESAPEAKE BYPASS



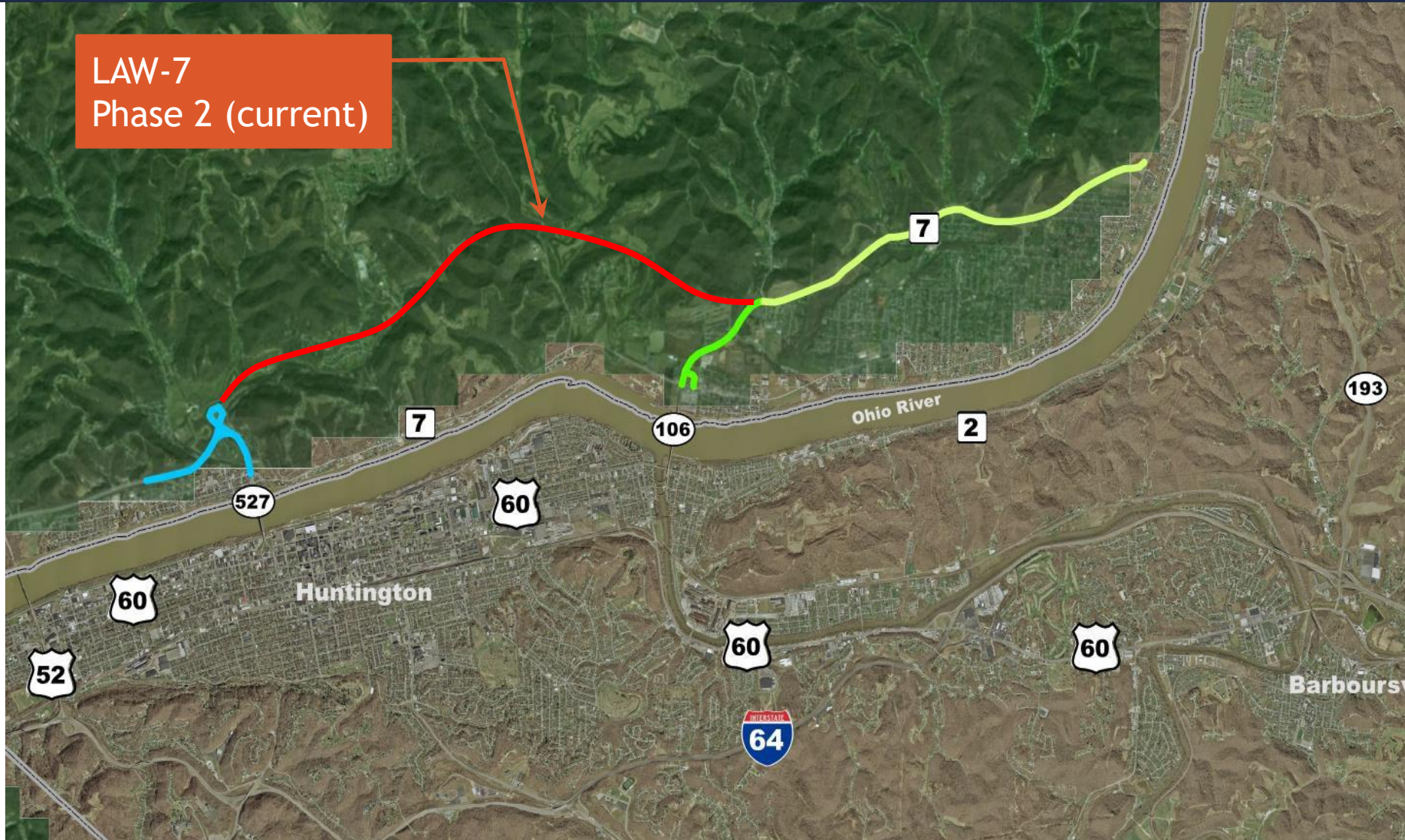
STATUS OF CHESAPEAKE BYPASS - PHASE 1A



STATUS OF CHESAPEAKE BYPASS - PHASE 1B



STATUS OF CHESAPEAKE BYPASS - PHASE 2



PHASE 2 - PROJECT SCOPE

- Complete western trumpet interchange with SR 527
- New interchange at SR 775
- ~6.1 miles long through hills/valleys
- Mostly 2 lane road with some truck climbing sections and 4 lane sections
- 120 ft rock cuts & 150 ft embankments
- ~ 5 Million cubic yards of excavation
- 10 bridges
- 2 Bridges with 2 stage MSE walls
- Noise Walls
- Single-lane Roundabout at SR 243
- Enhanced Type-C ODOT Construction Offices – conference room intended to use for project meetings
- 3 yrs – 9 months construction duration
- 9.5% DBE goal

PHASE 2 - UNIQUE ASPECTS

❖ Intent

- Bring to attention aspects of the project that are unique.
- All information presented can be found in the construction plans.

❖ Agenda

- Demolition Contractor and Tree Clearing Contractor
- Environmental
- Real Estate & Utilities
- Geotechnical
- Structures
- MOT & Interim Completion Dates

DEMOLITION CONTRACT AND TREE CLEARING CONTRACT

- Demolition contract - 95% complete; finish punchlist - end of November 2024
- Some demolition included in Highway Construction plans (this project)
- Tree Clearing contract - 5% complete; finish March 1, 2025
- Intend to clear all of Tree Clearing Areas “A” and “B” (after waterway permits)
- Only cutting & removing trees 3” and above
- Stumps & roots left
- Tree clearing Area - C = this contractor does all clearing and grubbing
- Adding area around SR 243 and CR 2 to Tree Clearing Contract via change order -
see upcoming Addendum for changes

ENVIRONMENTAL

- 401 Waterway permits anticipated to be approved by end of November
- 404 Permit already secured
- Tree cutting first in area of Rock Outcrops from Sta 307+00 to 348+00
- Special Provisions - Waterway Permits lists Temp Access Fills (TAF) allowed
- Special Provisions - Asbestos - provides forms needed for Demolition work
- Do Not Disturb (DND) Areas - ODOT did not mitigate for any impacts
- Oil and Gas Wells - 2 Active and 2 previously plugged; 3 are within footprint; venting plans
- CONSTRUCTED DEER PATHs under some bridges
- Noise restriction around Brentwood subdivision

REAL ESTATE & UTILITIES

- 4 Lane - Limited Access ROW purchased. Some excess parcels.
- Final Utility relocation plans located with Reference Files
- **Draft** Utility Note - in Reference Files - unconfirmed sequence and dates
- Final Utility Note to be issued via Addenda
- Relocation sequencing developed to follow MOT scheme

GEOTECHNICAL

- Item 203 Embankment, As Per Plan (Type C) - durable drainage layer for Ohio River Flood conditions
- Identify and use durable material for on-site use in base drainage layer
- If blasting used - be aware of potentially sensitive geology; drone video of each shot
- EMBANKMENTS - PERMISSIBLE RATES OF CONSTRUCTION - at several embankment areas
- EMBANKMENTS - REINFORCED SOIL SLOPES - at bridge abutments
- ITEM 605 - 6" ROCK CUT UNDERDRAINS, AS PER PLAN - located near cut/fill line to catch seepage

STRUCTURES

- 10 bridges (6 - 3 span; 1 - 2 span; 3- single span)
 - 8 concrete I-Beam Bridges
 - 22ft Structural Multi-Plate in Bent Creek
 - 1 Steel Plate Girder (at SR 775 Interchange)
- Retaining Wall at SR 775 Interchange
- 14 ft Noise Walls; 114,700 sf - none on bridges - Note: careful of overhead clearances to electric lines

MOT & INTERIM COMPLETION DATES

- MOT for local roads developed with Lawrence Co Engineer and Township Trustees
- Maintain CR2 through construction zone until Step 1 of Phase 1 is complete
- Build SR 775 bridge over SR 7 while SR 775 is maintained
- Close SR 775 for short term for tie-ins to new SR7

QUESTIONS ???

Please state your Name and Company prior to asking question.



Tom Barnitz, P.E.

tom.barnitz@dot.ohio.gov

740.774.8877