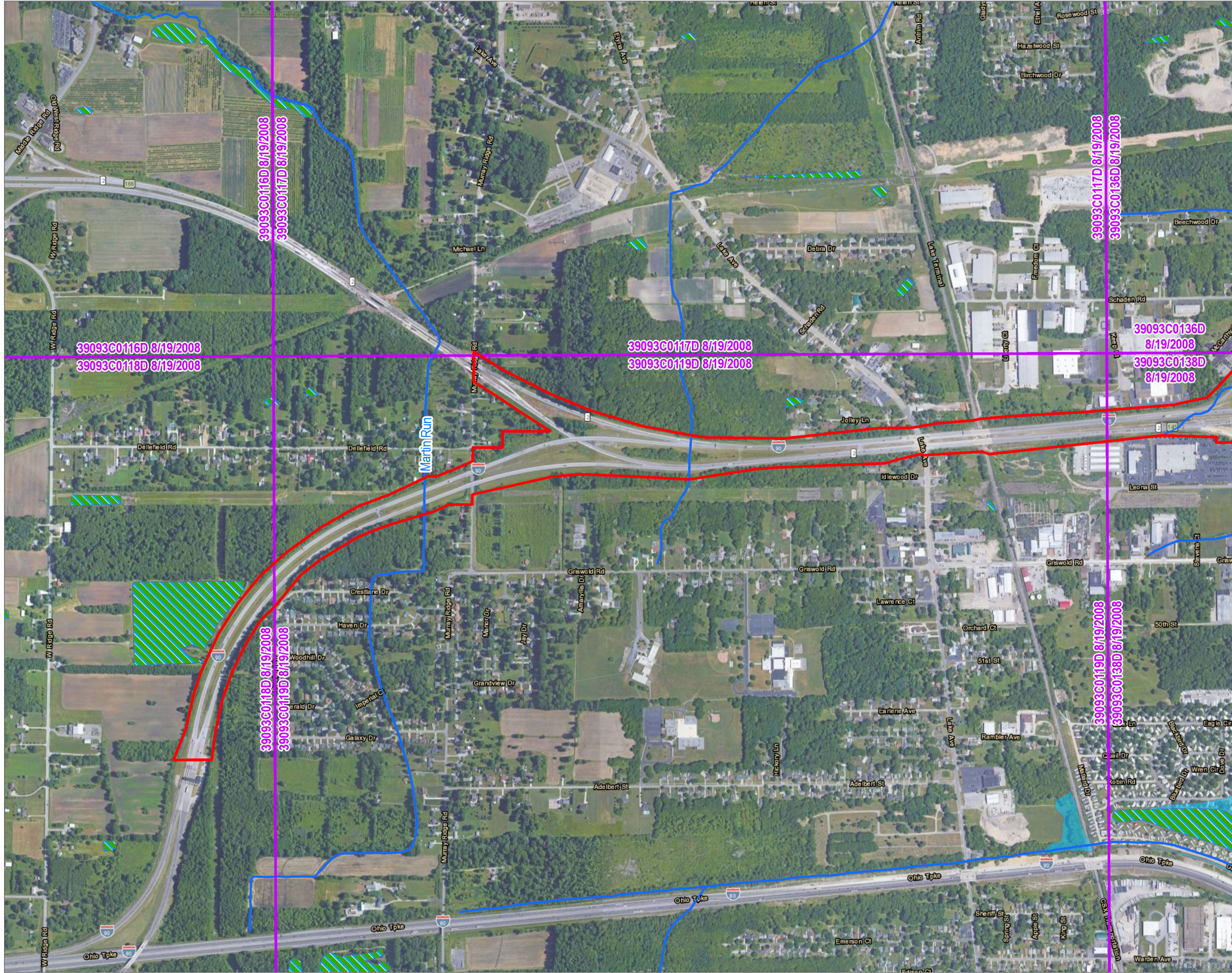
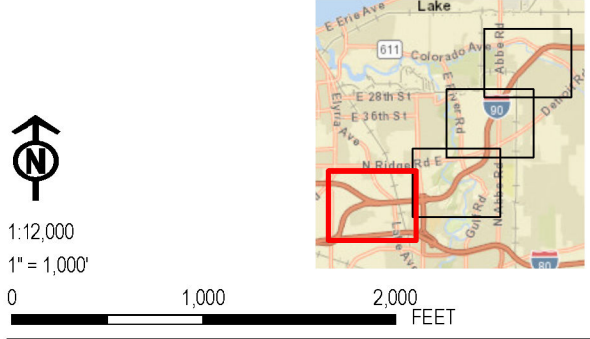


Coordinate System: NAD 1983 StatePlane Ohio North FIPS 3401 Feet; Map Rotation: 0
 - Saved By: MODEL on 12/17/2023, 09:15:12 AM; File Path: T:\L-PROJ\ECTS\Ohio_DDT\528418_LOR-90-1076-APP\X\Final\Study.aprx; Layout Name: Fig05_Hydro



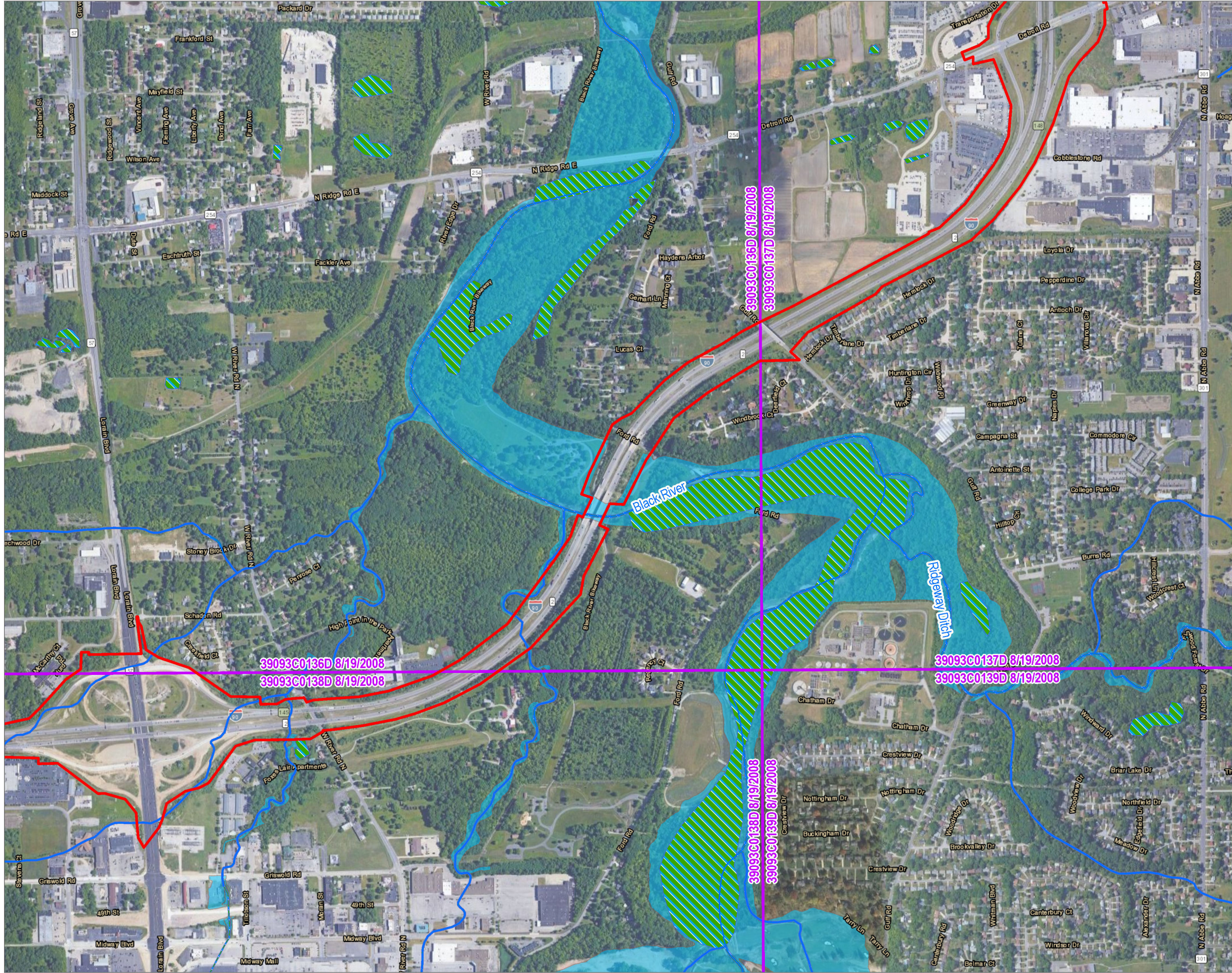
- PROJECT STUDY AREA
- NATIONAL HYDROGRAPHY DATASET (NHD) STREAM
- NATIONAL WETLANDS INVENTORY (NWI) FEATURE
- FEMA 100-YEAR FLOODPLAIN
- FEMA FLOOD PANEL
- MUSSEL STREAM

BASE MAP: GOOGLE MAPS.
 DATA SOURCES: WETLAND DATA ACQUIRED FROM U.S. FISH & WILDLIFE SERVICE, NATIONAL WETLANDS INVENTORY (NWI). STREAM DATA ACQUIRED FROM USGS, NATIONAL HYDROGRAPHY DATASET (NHD). FLOOD DATA ACQUIRED FROM FEMA, NATIONAL FLOOD HAZARD LAYER (NFHL).



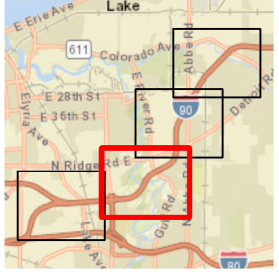
PROJECT:		LOR-90-10.76 (PID 107714) LORAIN COUNTY, OHIO	
TITLE:		WATER RESOURCES MAP	
DRAWN BY:	M. OPEL	PROJ. NO.:	528418
CHECKED BY:	E. NIPER	FIGURE 5 (PAGE 1 OF 4)	
APPROVED BY:	J. PITTS		
DATE:	DECEMBER 2023	1382 WEST NINTH STREET SUITE 400 CLEVELAND, OH 44113 PHONE: 216-344-3072	
FILE:	FeasibilityStudy.aprx		

Coordinate System: NAD 1983 StatePlane Ohio North FIPS 3401 Feet; Map Rotation: 0
 - Saved By: MOPEL on 12/1/2023 09:15:12 AM; File Path: T:\L-PROJECTS\Ohio DOT\228418_LOR-90-1076-APP\FEASIBILITY\Study.aprx; Layout Name: Fig05_Hydro



- PROJECT STUDY AREA
- NATIONAL HYDROGRAPHY DATASET (NHD) STREAM
- NATIONAL WETLANDS INVENTORY (NWI) FEATURE
- FEMA 100-YEAR FLOODPLAIN
- FEMA FLOOD PANEL
- MUSSEL STREAM

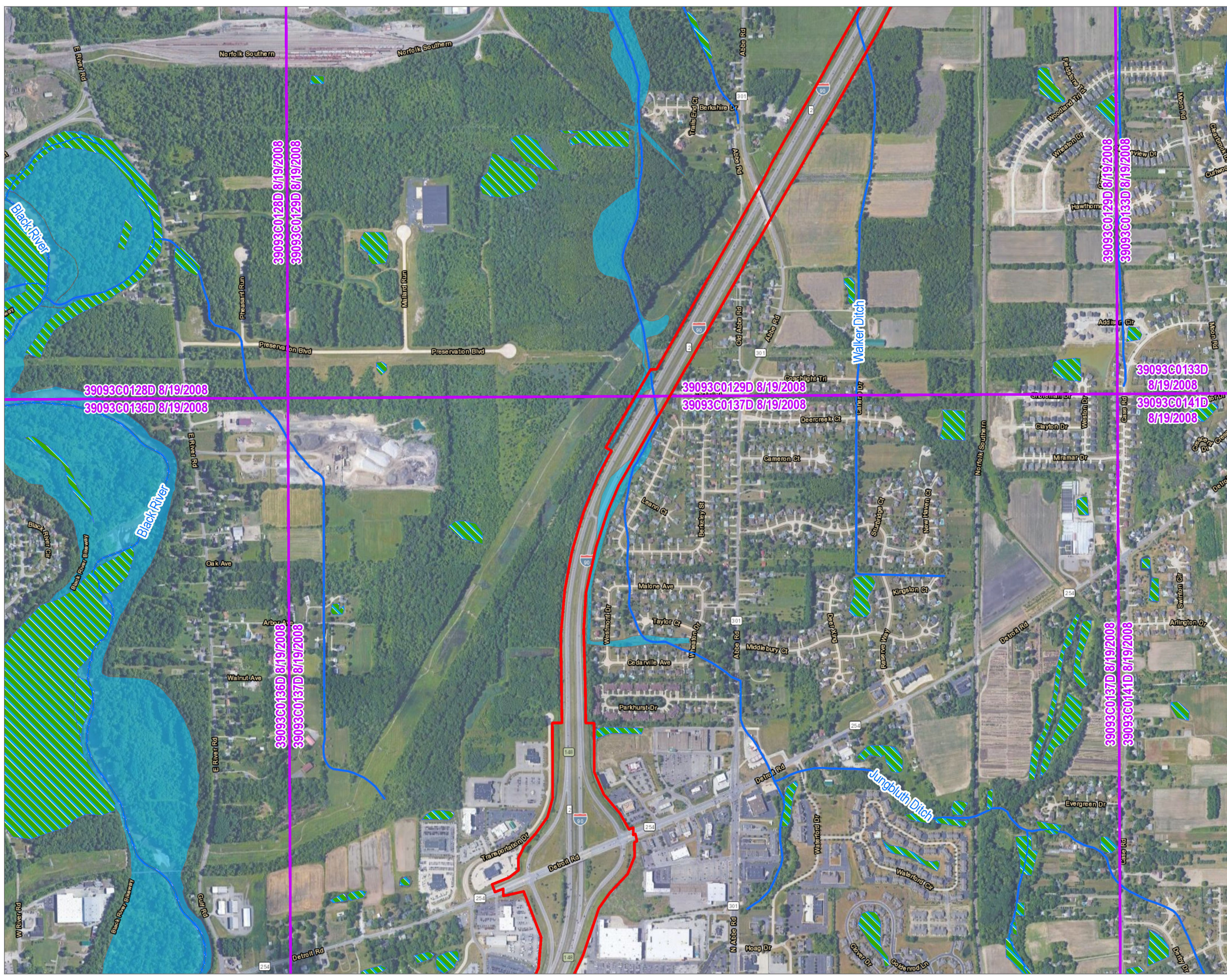
BASE MAP: GOOGLE MAPS.
 DATA SOURCES: WETLAND DATA ACQUIRED FROM U.S. FISH & WILDLIFE SERVICE, NATIONAL WETLANDS INVENTORY (NWI). STREAM DATA ACQUIRED FROM USGS, NATIONAL HYDROGRAPHY DATASET (NHD). FLOOD DATA ACQUIRED FROM FEMA, NATIONAL FLOOD HAZARD LAYER (NFHL).



1:12,000
 1" = 1,000'
 0 1,000 2,000 FEET

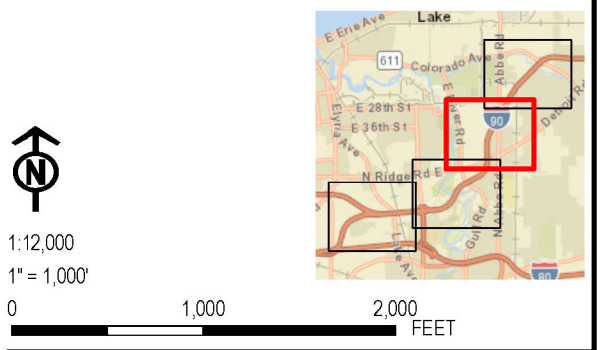
PROJECT:		LOR-90-10.76 (PID 107714) LORAIN COUNTY, OHIO	
TITLE:		WATER RESOURCES MAP	
DRAWN BY:	M. OPEL	PROJ. NO.:	528418
CHECKED BY:	E. NIPER	FIGURE 5 (PAGE 2 OF 4)	
APPROVED BY:	J. PITTS		
DATE:	DECEMBER 2023	1382 WEST NINTH STREET SUITE 400 CLEVELAND, OH 44113 PHONE: 216-344-3072	
FILE:	FeasibilityStudy.aprx		

Coordinate System: NAD 1983 StatePlane Ohio North FIPS 3401 Feet; Map Rotation: 0
 - Saved By: MOPEL on 12/1/2023, 09:15:12 AM; File Path: T:\L-PROJ\EC\T\Ohio_DOT\228418_LOR-90-1076-APP\FEASIBILITY\Study.aprx; Layout Name: Fig05_Hydro

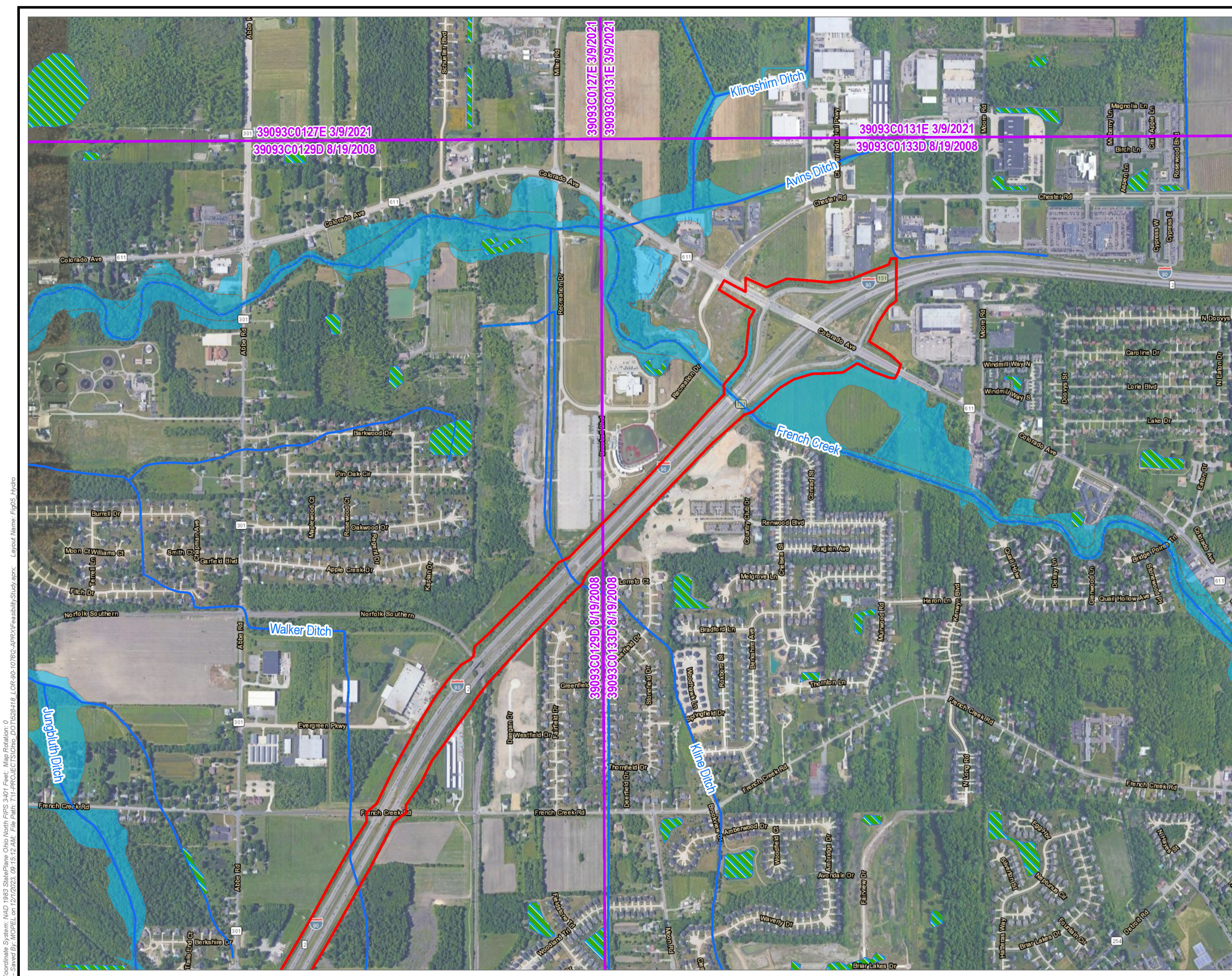


- PROJECT STUDY AREA
- NATIONAL HYDROGRAPHY DATASET (NHD) STREAM
- NATIONAL WETLANDS INVENTORY (NWI) FEATURE
- FEMA 100-YEAR FLOODPLAIN
- FEMA FLOOD PANEL
- MUSSEL STREAM

BASE MAP: GOOGLE MAPS.
 DATA SOURCES: WETLAND DATA ACQUIRED FROM U.S. FISH & WILDLIFE SERVICE, NATIONAL WETLANDS INVENTORY (NWI). STREAM DATA ACQUIRED FROM USGS, NATIONAL HYDROGRAPHY DATASET (NHD). FLOOD DATA ACQUIRED FROM FEMA, NATIONAL FLOOD HAZARD LAYER (NFHL).

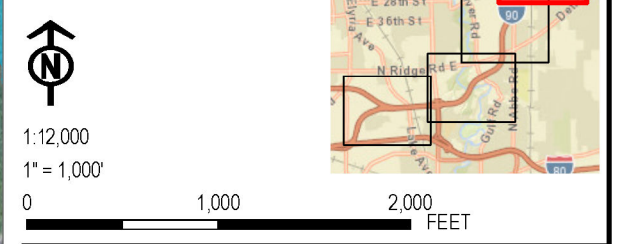
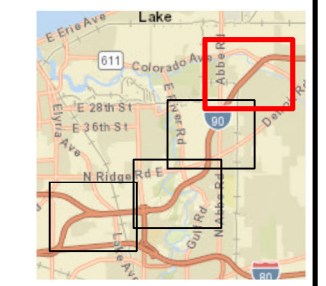


PROJECT:		LOR-90-10.76 (PID 107714) LORAIN COUNTY, OHIO	
TITLE:		WATER RESOURCES MAP	
DRAWN BY:	M. OPEL	PROJ. NO.:	528418
CHECKED BY:	E. NIPER	FIGURE 5 (PAGE 3 OF 4)	
APPROVED BY:	J. PITTS		
DATE:	DECEMBER 2023	1382 WEST NINTH STREET SUITE 400 CLEVELAND, OH 44113 PHONE: 216-344-3072	
FILE:	FeasibilityStudy.aprx		



- PROJECT STUDY AREA
- NATIONAL HYDROGRAPHY DATASET (NHD) STREAM
- NATIONAL WETLANDS INVENTORY (NWI) FEATURE
- FEMA 100-YEAR FLOODPLAIN
- FEMA FLOOD PANEL
- MUSSEL STREAM

BASE MAP: GOOGLE MAPS.
 DATA SOURCES: WETLAND DATA ACQUIRED FROM U.S. FISH & WILDLIFE SERVICE, NATIONAL WETLANDS INVENTORY (NWI). STREAM DATA ACQUIRED FROM USGS, NATIONAL HYDROGRAPHY DATASET (NHD). FLOOD DATA ACQUIRED FROM FEMA, NATIONAL FLOOD HAZARD LAYER (NFHL).



PROJECT:		LOR-90-10.76 (PID 107714) LORAIN COUNTY, OHIO	
TITLE: WATER RESOURCES MAP			
DRAWN BY:	M. OPEL	PROJ. NO.:	528418
CHECKED BY:	E. NIPER	FIGURE 5 (PAGE 4 OF 4)	
APPROVED BY:	J. PITTS		
DATE:	DECEMBER 2023	1382 WEST NINTH STREET SUITE 400 CLEVELAND, OH 44113 PHONE: 216-344-3072	
FILE:	FeasibilityStudy.aprx		

Coordinate System: NAD 1983 StatePlane Ohio North FIPS 3401 Feet; Map Rotation: 0
 --Saved By: MOPEL on 12/1/2023 09:15:12 AM; File Path: T:\L-PROJ\EC\TISI\Ohio_DDT\228418_LOR-90-1076\APR\FEASIBILITY\Study.aprx; Layout Name: Fig05_Hydro