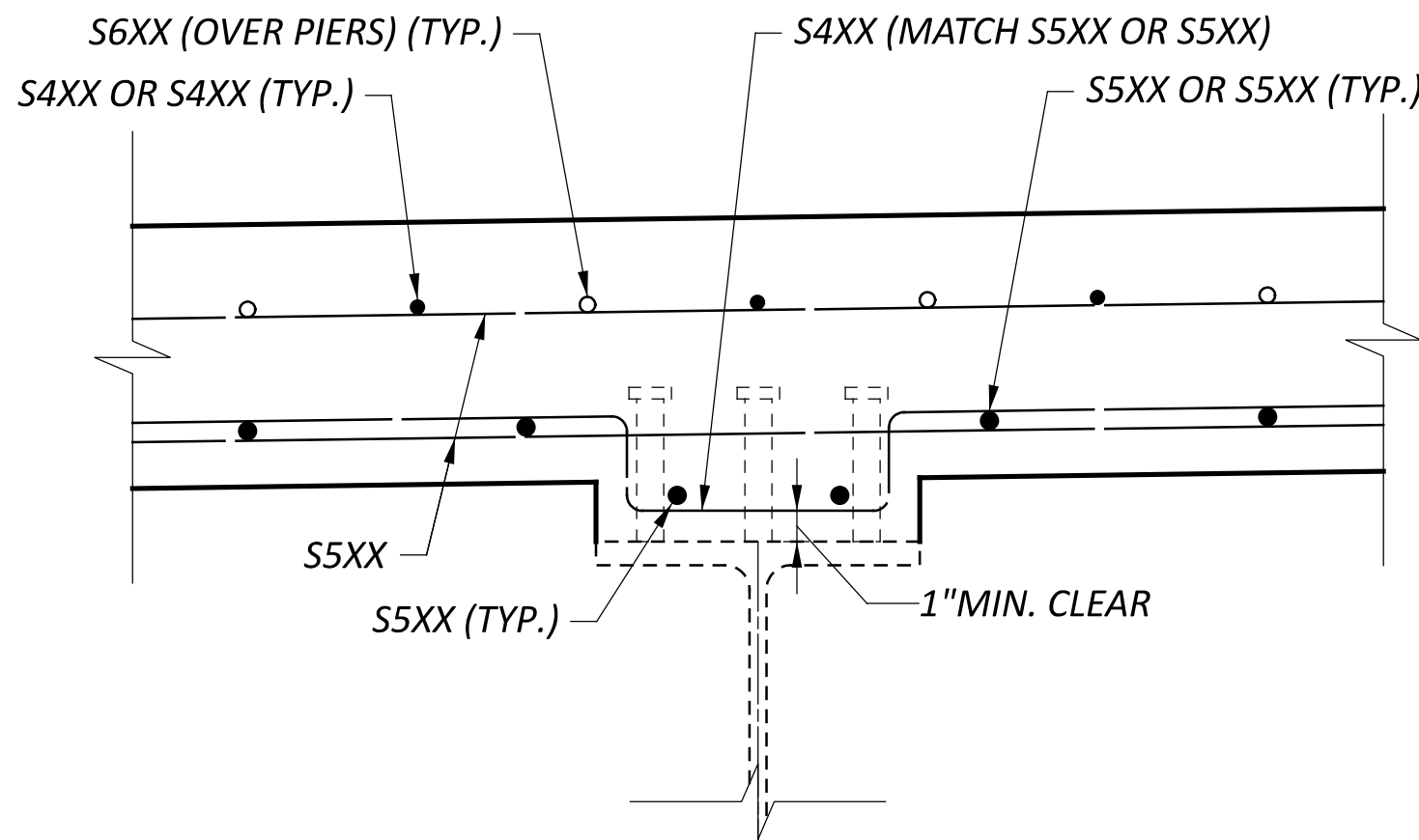


**TRANSVERSE SECTION**  
(HAUNCH REINFORCING NOT SHOWN FOR CLARITY)



**HAUNCH REINFORCEMENT DETAIL**

**NOTES:**

- DECK SLAB CONCRETE QUANTITY: THE ESTIMATED QUANTITY OF DECK SLAB CONCRETE IS BASED ON THE CONSTANT DECK SLAB THICKNESS, AS SHOWN, PLUS THE QUANTITY OF CONCRETE THAT FORMS EACH BEAM HAUNCH. THE ESTIMATE ASSUMES A VARIABLE HAUNCH THICKNESS WITH AN AVERAGE OF 3.85 INCHES AND A HAUNCH WIDTH EQUAL TO THE TOP FLANGE WIDTH. DEVIATE FROM THIS HAUNCH THICKNESS AS NECESSARY TO PLACE THE DECK SURFACE AT THE FINISHED GRADE. THE HAUNCH THICKNESS WAS MEASURED AT THE CENTERLINE OF THE BEAM, FROM THE SURFACE OF THE DECK TO THE BOTTOM OF THE TOP FLANGE MINUS THE DECK SLAB THICKNESS. THE AREA OF ALL EMBEDDED STEEL PLATES HAS BEEN DEDUCTED FROM THE HAUNCH QUANTITY IN ACCORDANCE WITH 511.23.
- FOR DECK PLAN, SEE SHEET S.13 / 21.
- FOR SCREED, TOP OF HAUNCH AND FINAL DECK ELEVATIONS, SEE SHEETS S.16 / 21 AND S.17 / 21.

TRANSVERSE SECTION  
BRIDGE NO. MAR-00746-09.050  
OVER OLENTANGY RIVER

SFN  
5103932

DESIGN AGENCY

fishbeck

DESIGNER  
BMV

CHECKER  
BMG

REVIEWER  
RSB 04/14/25

PROJECT ID  
119273

SUBSET TOTAL  
S.14 21

SHEET TOTAL  
P.30 37