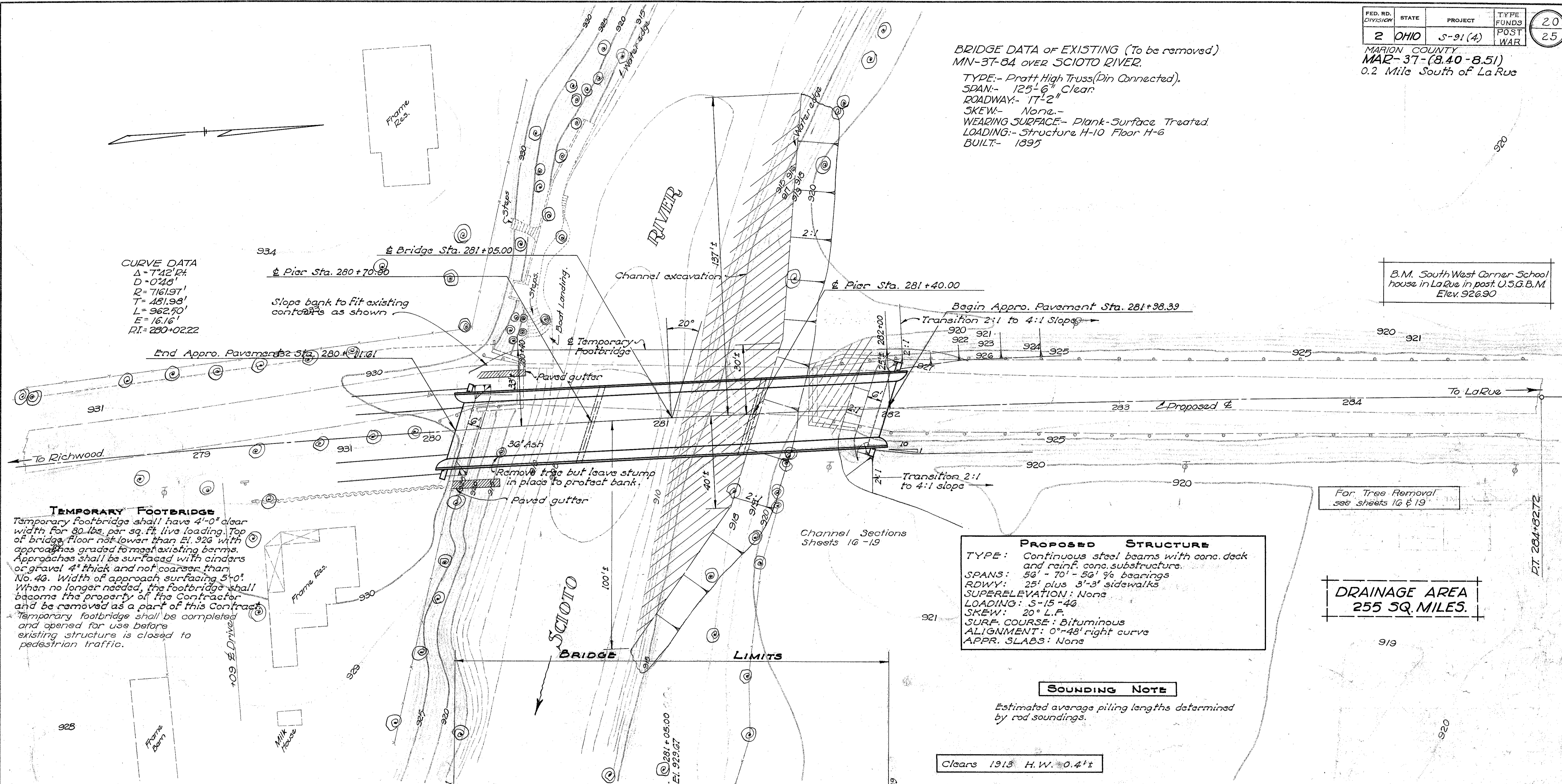


MARION COUNTY
 MAR-37-(8.40-8.51)
 0.2 Mile South of La Rue

BRIDGE DATA of EXISTING (To be removed)
 MN-37-84 OVER SCIOTO RIVER.
 TYPE:- Pratt High Truss (Pin Connected).
 SPAN:- 125'-6" Clear.
 ROADWAY:- 17'-2"
 SKEW:- None.
 WEARING SURFACE:- Plank-Surface Treated.
 LOADING:- Structure H-10 Floor H-6
 BUILT:- 1895

CURVE DATA
 $\Delta = 742' R$
 $D = 0.243'$
 $R = 7161.97'$
 $T = 451.98'$
 $L = 962.70'$
 $E = 16.16'$
 $PI = 280+02.22$

B.M. South West Corner School house in La Rue in post U.S.G.B.M. Elev. 926.90



TEMPORARY FOOTBRIDGE
 Temporary footbridge shall have 4'-0" clear width for 80 lbs. per sq. ft. live loading. Top of bridge floor not lower than El. 926 with approaches graded to meet existing berms. Approaches shall be surfaced with cinders or gravel 4" thick and not coarser than No. 46. Width of approach surfacing 5'-0". When no longer needed, the footbridge shall become the property of the Contractor and be removed as a part of this Contract. Temporary footbridge shall be completed and opened for use before existing structure is closed to pedestrian traffic.

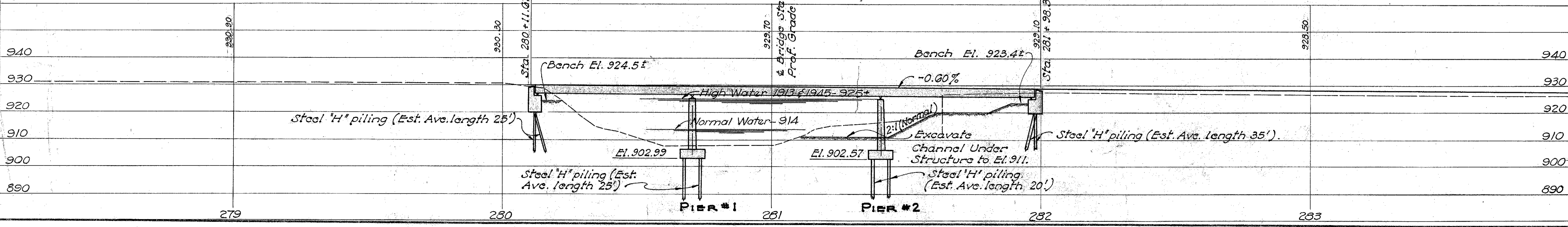
PROPOSED STRUCTURE
 TYPE: Continuous steel beams with conc. deck and reinf. conc. substructures.
 SPANS: 56' - 70' - 56' % bearings
 RDWY: 25' plus 3'-3" sidewalks
 SUPERELEVATION: None
 LOADING: S-15-46
 SKEW: 20° L.F.
 SURF. COURSE: Bituminous
 ALIGNMENT: 0°-48' right curve
 APPR. SLABS: None

DRAINAGE AREA
 255 SQ. MILES.

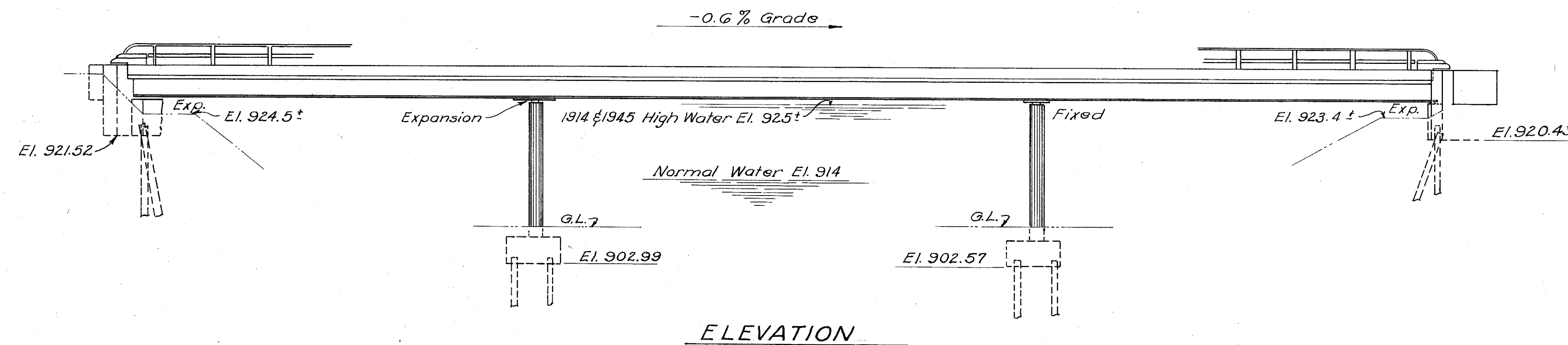
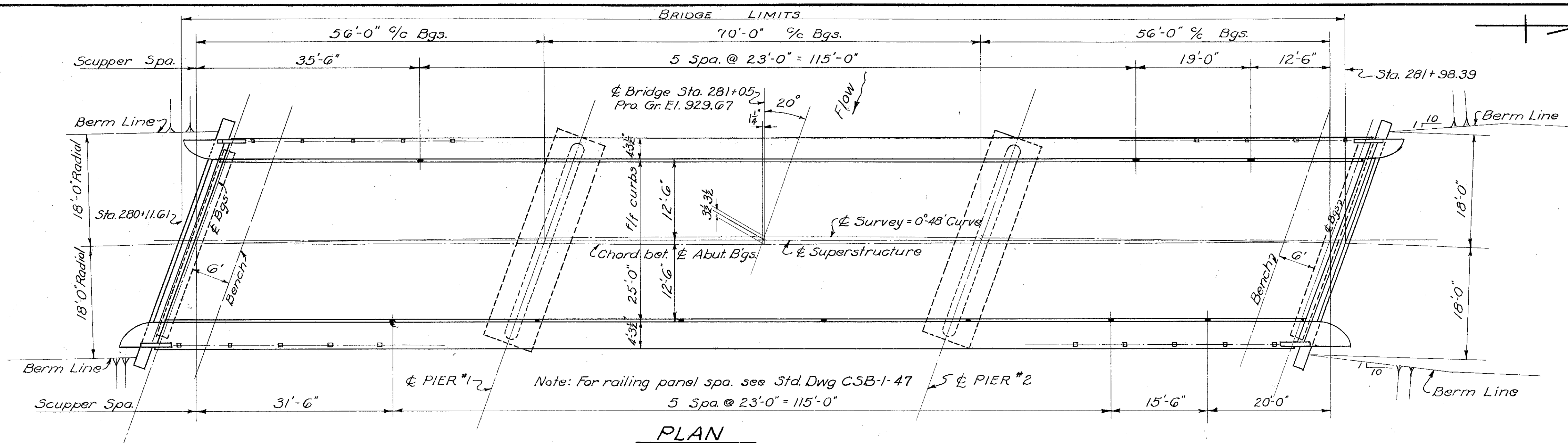
SOUNDING NOTE

Estimated average piling lengths determined by rod soundings.

Clears 1913 H.W. 0.4'±



STATE OF OHIO DEPARTMENT OF HIGHWAYS BUREAU OF BRIDGES.					
SITE PLAN					
BRIDGE No. MN-37-84 OVER SCIOTO RIVER.					
MARION COUNTY S.R. - 37			MAR-37-(8.40-8.51) STA.- 281+05.00		
Scale 1" = 20'					
PRESENT TOPO			PROPOSED WORK.		
SURVEYED	DRAWN	DESIGNED	DRAWN	CHECKED	REVIEWED
L.F. #WRJ	BAB.	P.E. S.	P.E. S.	J.H.B.	G.H.A.



GENERAL NOTES

REFERENCE shall be made to Std. Dw'g CSB-1-47, sheets 1 & 2 dated 9-18-47.

REMOVAL OF EXISTING BRIDGE

Existing Superstructure shall be dismantled. The steel joists and floor beams shall be carefully removed and stored near the site at disposal of State Forces. Remainder of Superstructure shall become the property of the contractor.

South Abutment shall be removed to 1ft below proposed ground line.

North Abutment shall be removed to elevation of finished ground line. Suitable stone may be used for bank protection as directed by the Engineer.

PILING shall be driven to a min. bearing capacity of 40 tons

CAMBER - Shop camber beams 1/2"

WELDING shall be class "A"

ESTIMATED QUANTITIES				AS BUILT						
Item	Total	Unit	Description	N. Abut.	S. Abut.	Pier #1	Pier #2	Superstr. General	Change Order	Final Quantity
E-2	Lump	Sum	Cofferdams, Crips and Sheeting					Lump		Lump
E-2	361	C.Y.	Unclassified Excavation	90	90	67	114			361
E-3	1790	C.Y.	Channel Excavation					1790	#1, -159	1639
E-9	13	Ea.	Removal of Trees and Stumps					13		13
S-1	187	C.Y.	Class "C" concrete, Superstructure					187		187
S-1	80	C.Y.	Class "C" concrete, Abutments	40	40					80
S-1	93	C.Y.	Class "E" concrete, Pier walls			46.5	46.5			93
S-1	70	C.Y.	Class "E" concrete, Pier Footings			35.5	35.5			70
S-3	494	S.Y.	Type "C" Waterproofing					494		494
S-4	44,935	Lbs.	Reinforcing Steel	3,000	3,000	2,310	2,310	34,256	59	44,935
S-7	159,500	Lbs.	Structural Steel					159,500		159,500
S-8	159,500	Lbs.	Field Painting & Structural Steel					159,500		159,500
S-14	375	Lin. Ft.	Railing, Steel with Conc. End Posts					375		375
S-15	Lump	Sum	Temporary Run-around Foot bridge and Approaches					Lump		Lump
S-16	Lump	Sum	First Test Pile					Lump		Lump
S-18	1020	Lin. Ft.	Steel Piling (12BP53)	175	125	400	320		#1, -408.46	611.54
S-24	Lump	Sum	Removal of Existing Structure					Lump		Lump
T-35	35	C.Y.	Asphaltic Concrete Surface Course Type "A" or "C" (70-80 or 85-100)					35		34.7

STATE OF OHIO
DEPARTMENT OF HIGHWAYS
BUREAU OF BRIDGES AND RAILROAD CROSSINGS

**GENERAL PLAN & ELEVATION
NOTES & QUANTITIES**

BR. No MN-37-84 OVER SCIOTO R.
STA. 281+05

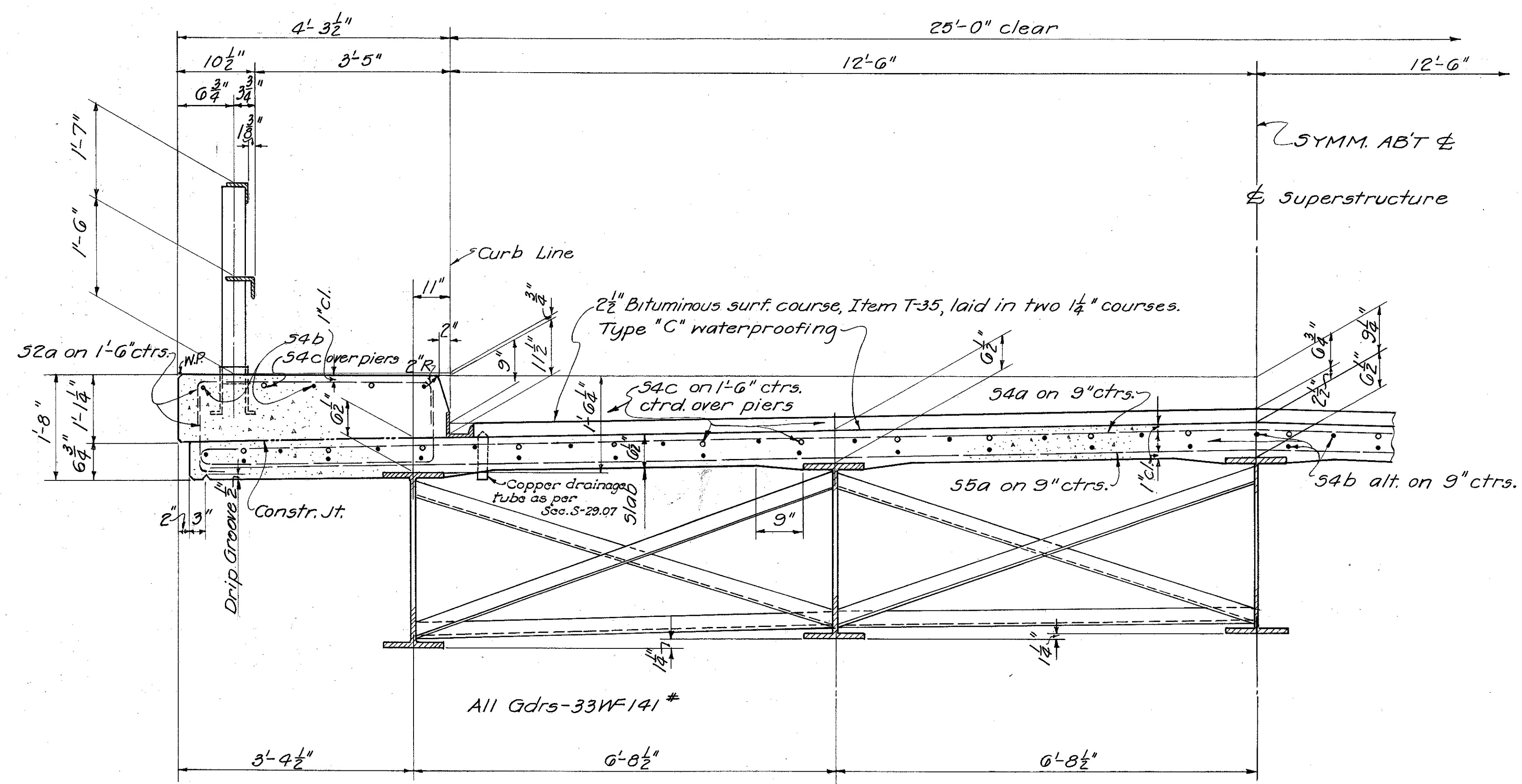
MARION CO. MAR.-37-(8.40-8.51)

DESIGNED	DRAWN	TRACED	CHECKED	REVIEWED	DATE	REVISED
		J.D.J.	W.C.R.	BFG	6-8-49	

FED. RD. DIVISION	STATE	PROJECT	TYPE FUNDS
2	OHIO	5-31(4)	POST WAR

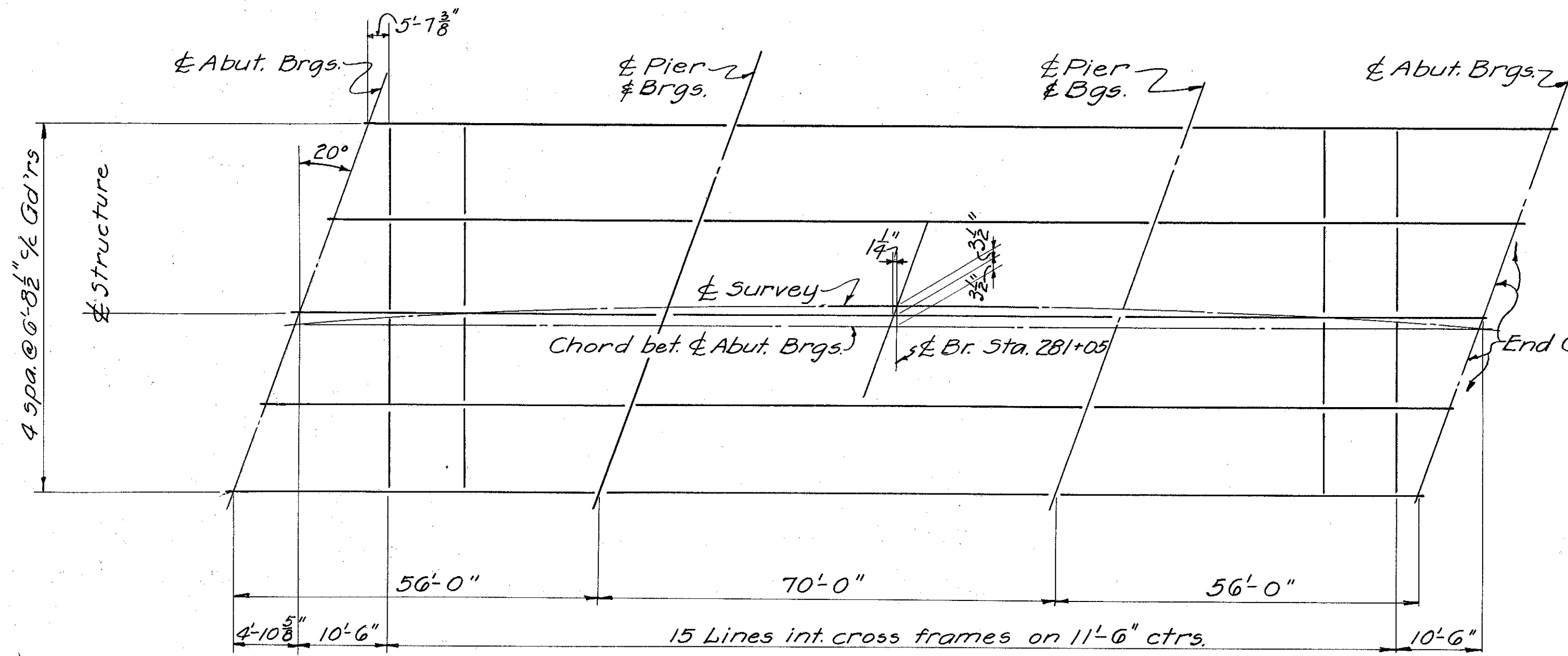
MARION COUNTY
MAR-37-(8.40-8.51)

22
2.5

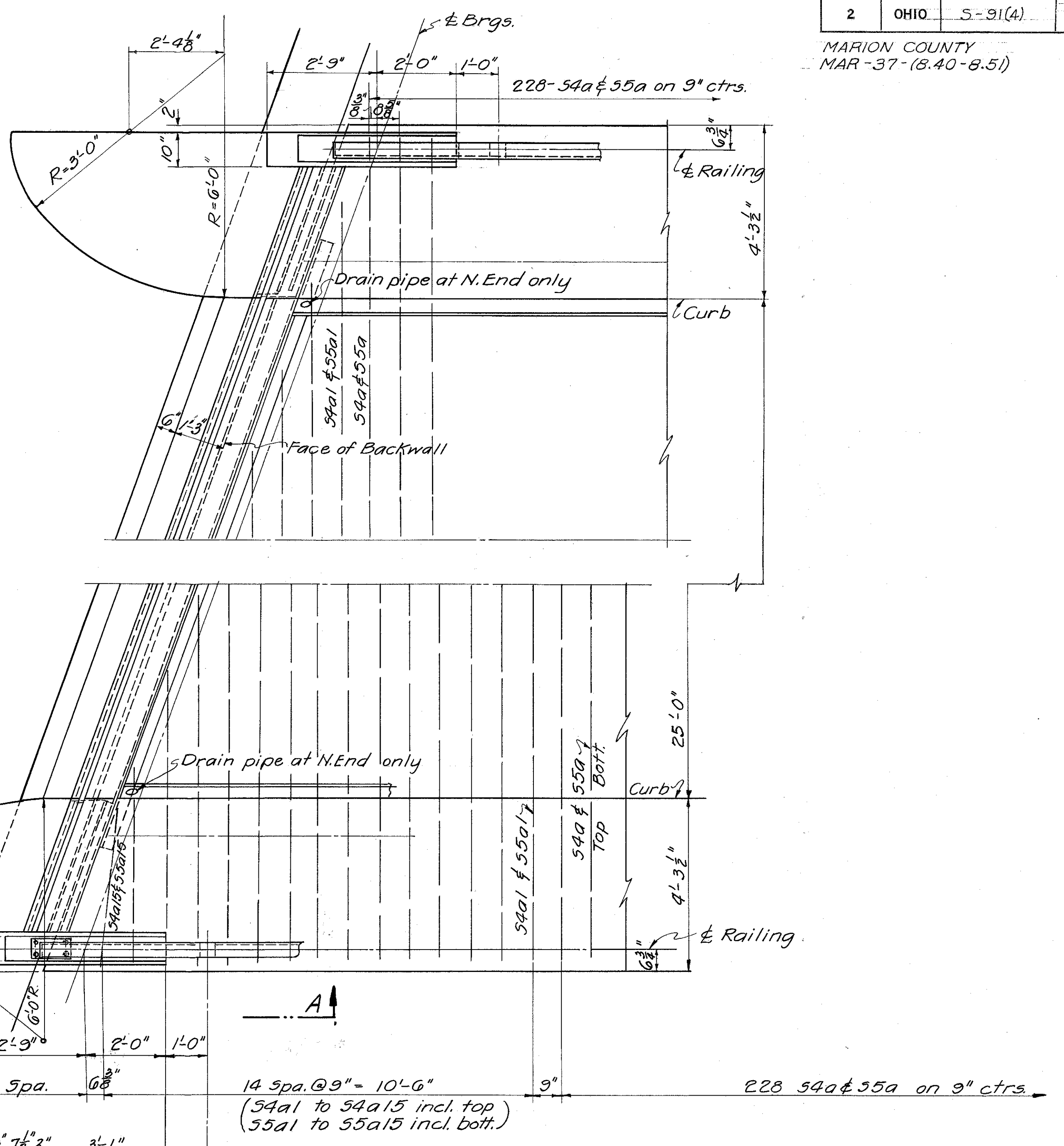


TYPICAL HALF SECTION

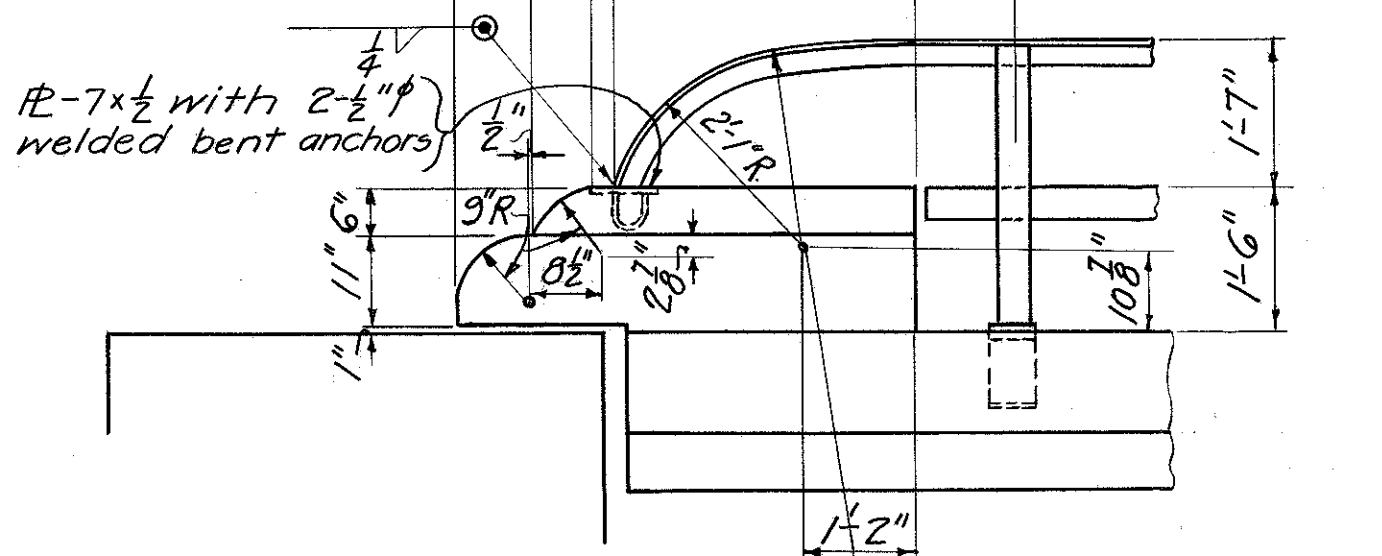
For details not shown see Std. Dwg. C5B-1-47 Sheets 1 & 2



FRAMING PLAN



PLAN AT ENDS OF BRIDGE



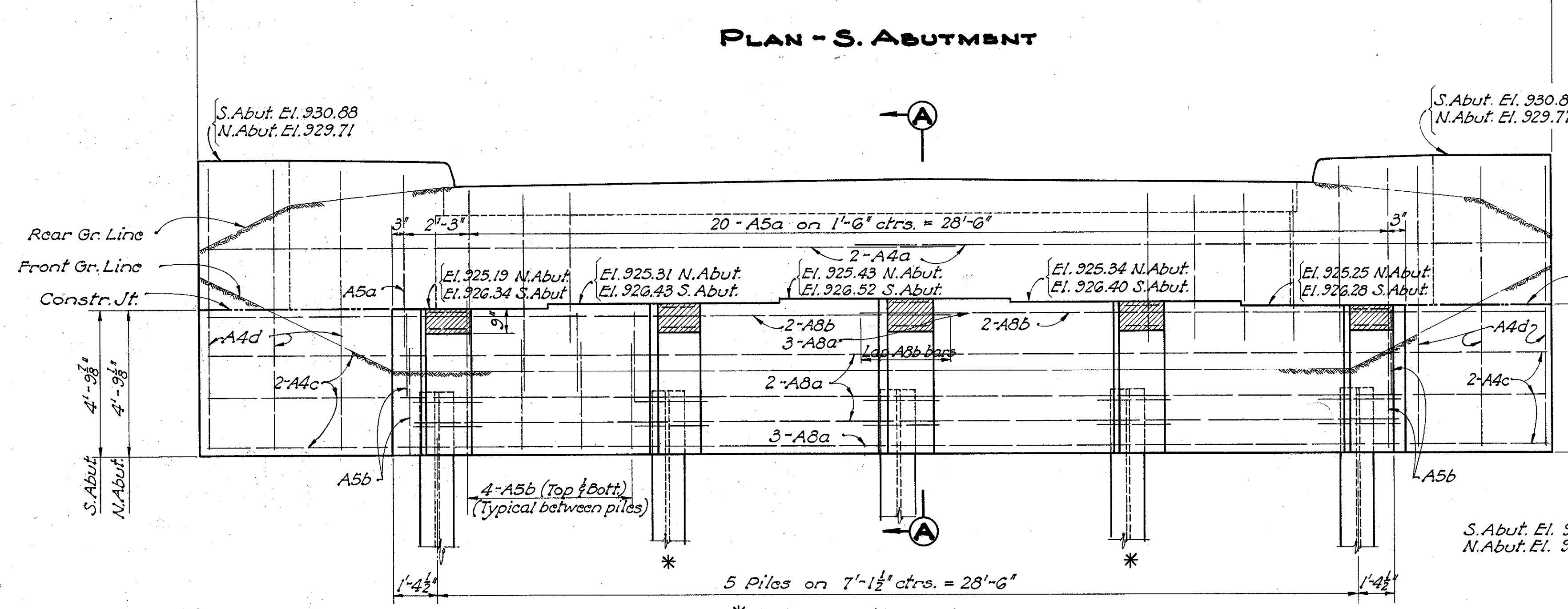
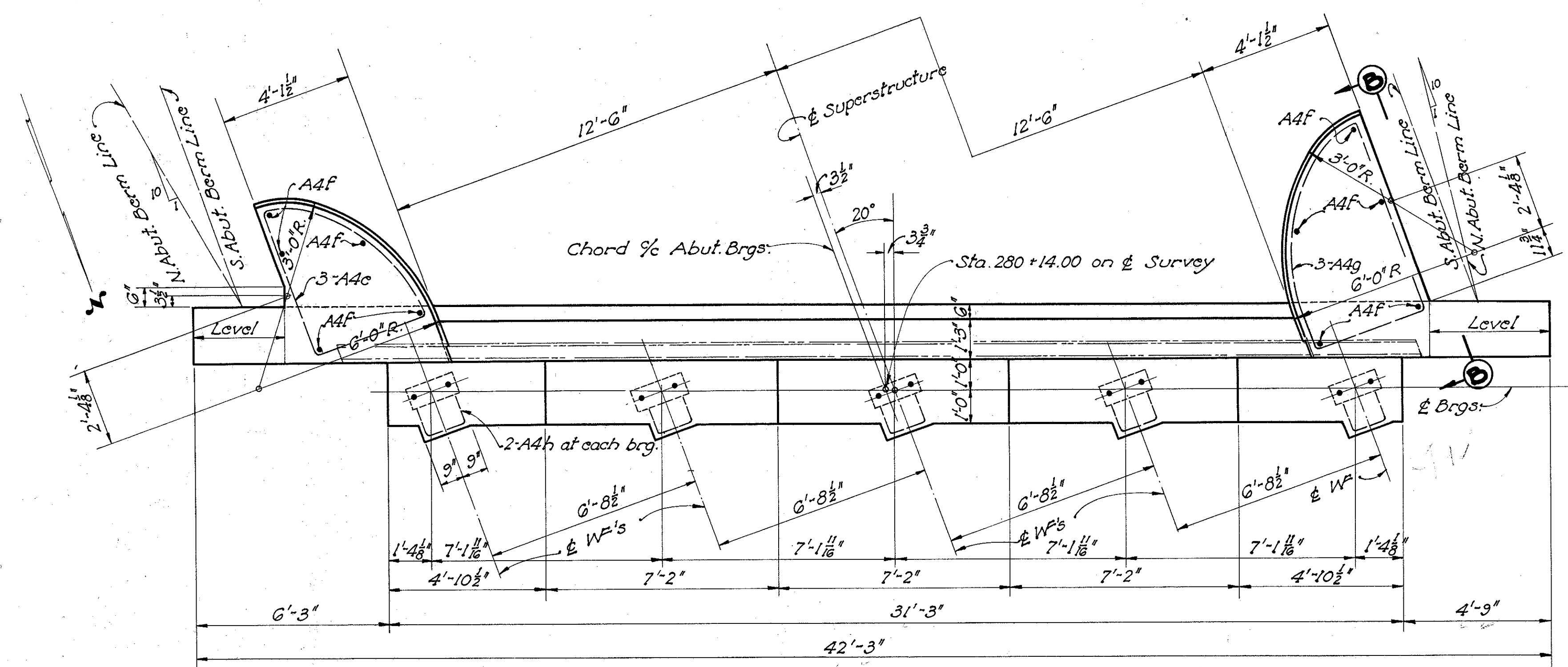
VIEW - 'A-A' (TYPICAL)

NOTE - Intermediate Railing Panel Details are similar to details shown on Std. Dwg. C5B-1-47 (sheet 2) except for railing height. Reinforcing for concrete end treatment same as shown on above Std. Dwg.

Provide Bumper Angles in accordance with details on Dwg. C5B-1-47, sheet 2.
For additional details see Std. Drgs. C5B-1-47, sheets 1 and 2.
Use "R" = 1 3/4" for stringer splice welding procedure on sheet 1, C5B-1-47.

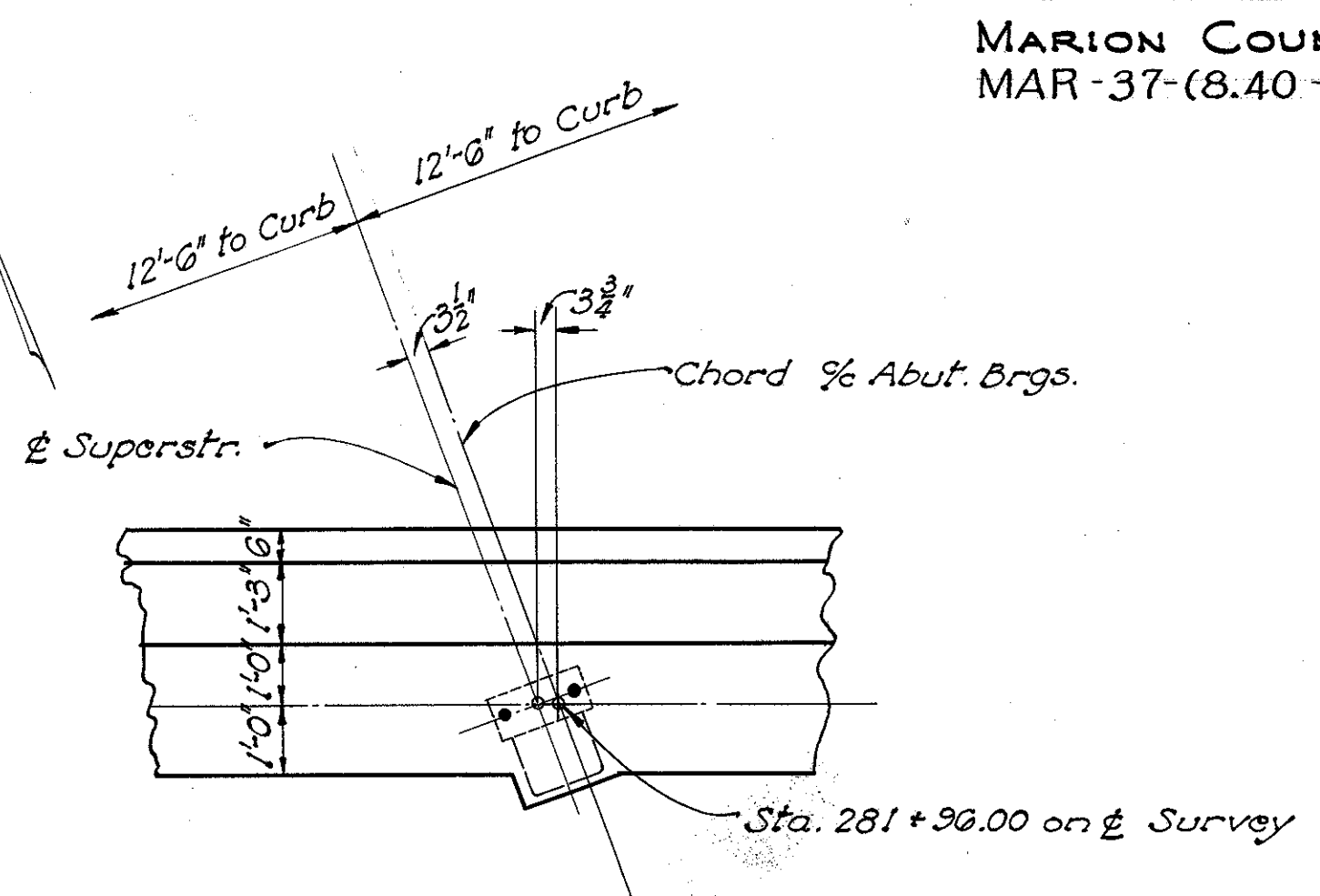
STATE OF OHIO DEPARTMENT OF HIGHWAYS BUREAU OF BRIDGES AND RAILROAD CROSSINGS					
SUPERSTRUCTURE DETAILS					
BRIDGE No. MN-37-84 OVER SCIOTO RIVER					
MARION CO., STA 281+05.00			MAR-37-(8.40-8.51)		
DESIGNED	DRAWN	TRACED	CHECKED	REVIEWED	DATE
K.R.	K.S.T.	W.C.K.	BFG	W.H.C.	6-8-49

MARION COUNTY
MAR-37-(8.40-8.51)

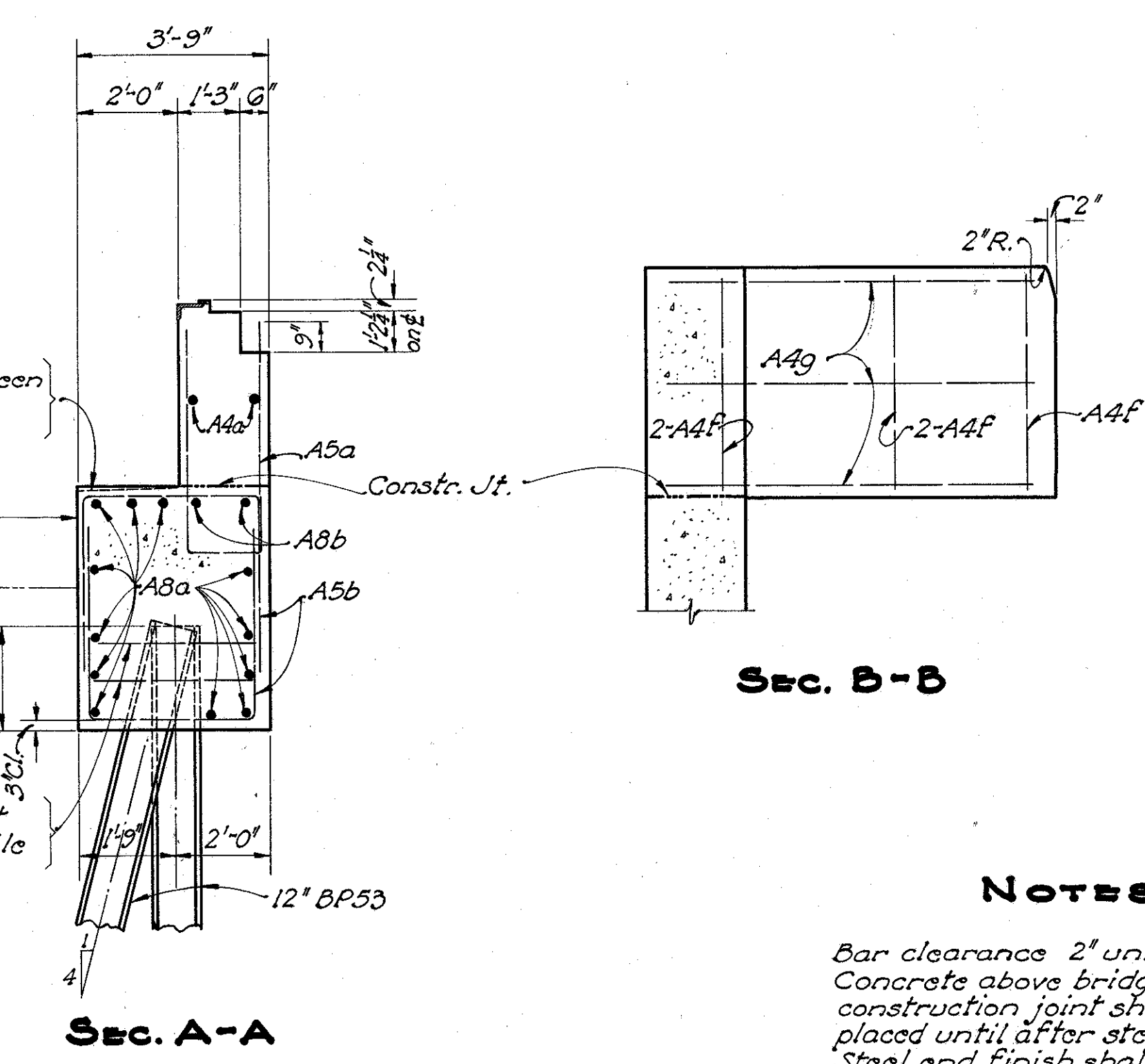


NOTE
Shaded areas on abutment face (9" x 1'-0" centered at each stringer) shall be finished with particular care, to provide plane surfaces at right angles with the grade of the structure, insuring full bearing for bumper angles.

* Indicates battered piles



PART PLAN - N. ABUTMENT
PART NOT SHOWN IS SAME AS S. ABUTMENT



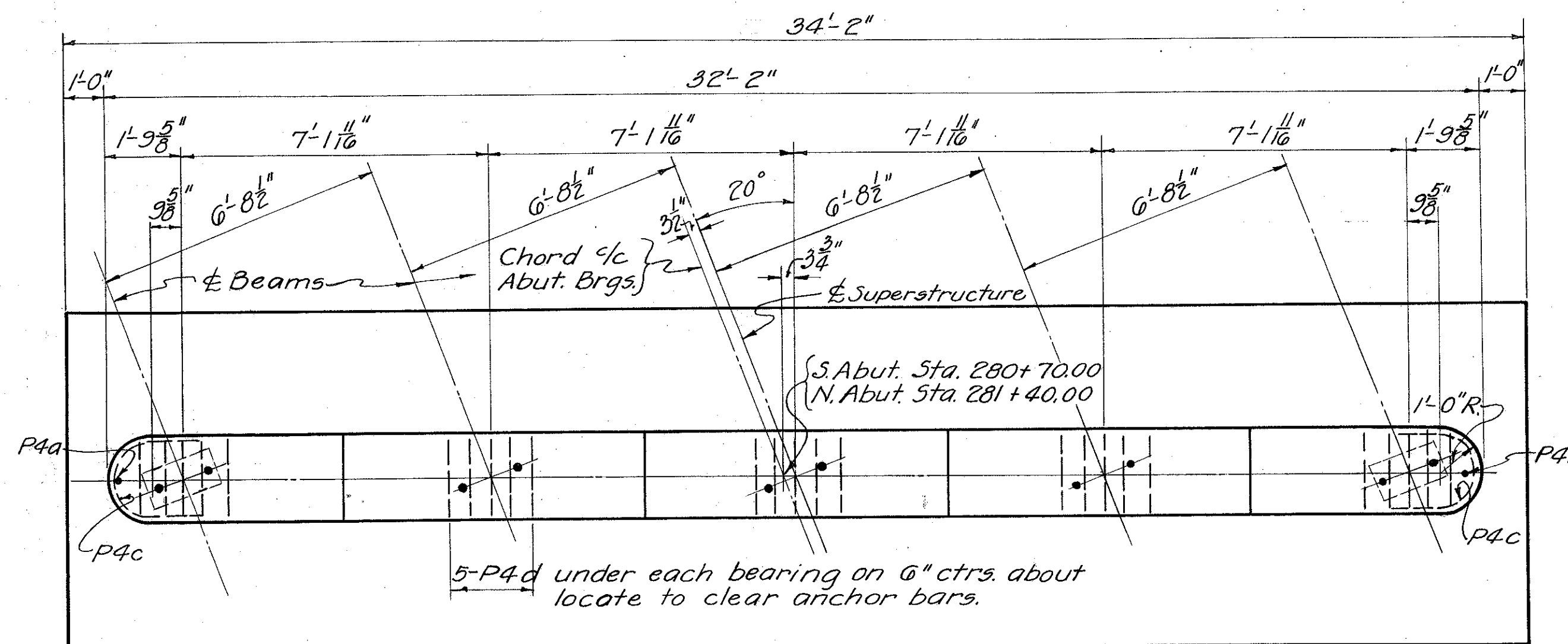
NOTES
Bar clearance 2" unless noted. Concrete above bridge seat construction joint shall not be placed until after steel is erected. Steel end finish shall be used as a template for top of backwall.

STATE OF OHIO DEPARTMENT OF HIGHWAYS BUREAU OF BRIDGES AND RAILROAD CROSSINGS						
ABUTMENT DETAILS						
BRIDGE No. MN-37-84 OVER SCIOTO RIVER						
MARION COUNTY				STA. 281+05.00 Sec. MAR-37-(8.40-8.51)		
DESIGNED	DRAWN	TRACED	CHECKED	REVIEWED	DATE	REVISED
W.C.K.	W.C.K.	JAMES	W.C.K.	BFG	6-8-49	

FED. RD. DIVISION	STATE	PROJECT	TYPE FUNDS
2	OHIO	S-91 (4)	POST WAR

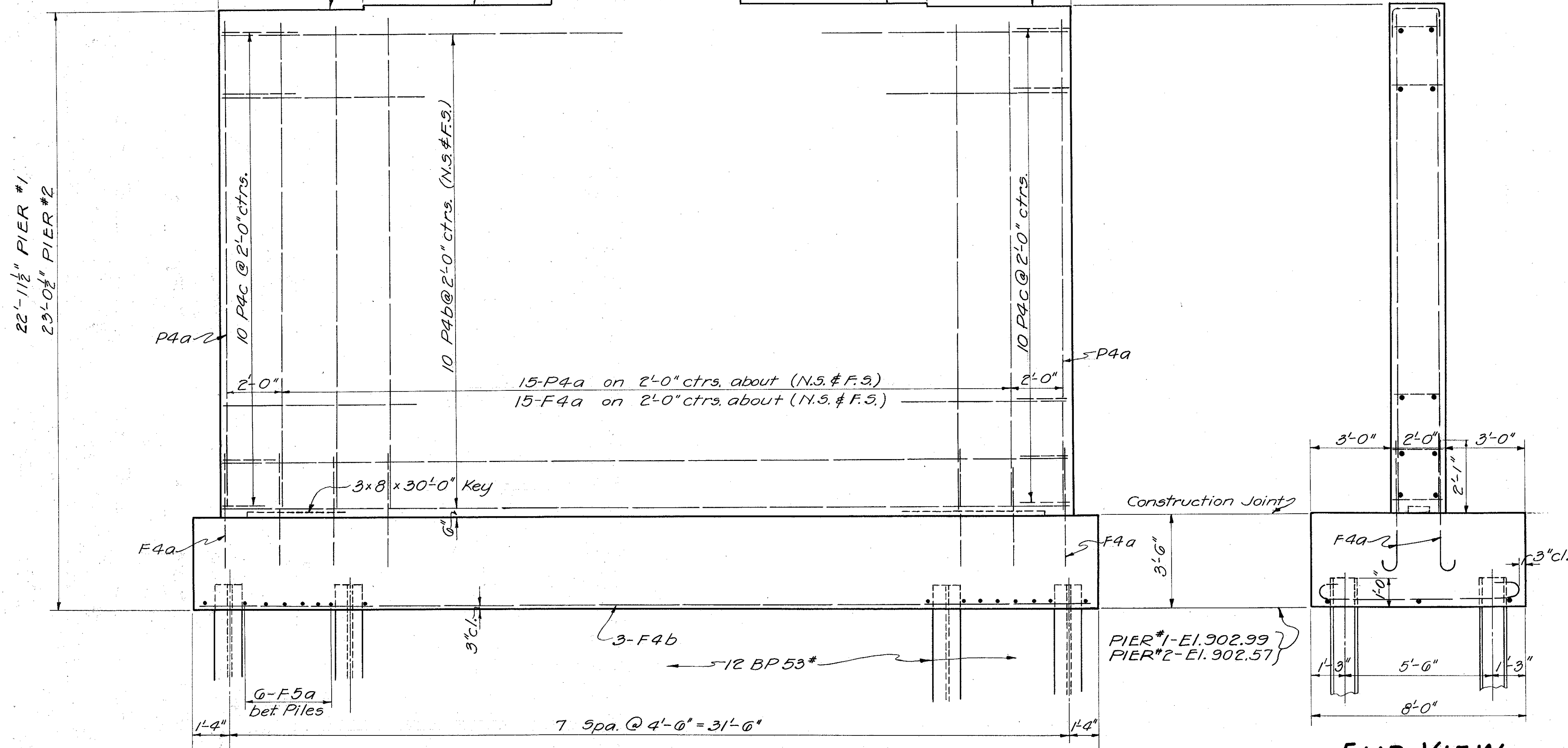
24
25

MARION COUNTY
MAR-37-(8.40-8.51)



PLAN

	5'-4"	7'-2"	7'-2"	7'-2"	5'-4"
PIER # 1 Elevation	925.95	926.04	926.13	926.01	925.89
PIER # 2 Elevation	925.61	925.70	925.79	925.67	925.55



ELEVATION

END VIEW

STATE OF OHIO
DEPARTMENT OF HIGHWAYS
BUREAU OF BRIDGES AND RAILROAD CROSSINGS

PIER DETAILS
BRIDGE NO. MN-37-84
OVER SCIOTO RIVER
MARION CO. STA. 281+05
MAR-37-(8.40-8.51)

DESIGNED	DRAWN	TRACED	CHECKED	REVIEWED	DATE	REVISED
AKK	KAR	KST	W.C.K.	BFG	MAR 6-8-49	

MARION COUNTY
MAR-37-(8.40-8.51)

REINFORCING STEEL LIST

Mark	Size	No.	Length	Weight	Shp.	Bending Diagrams	Mark	Size	No.	Length	Weight	Shp.	Bending Diagrams
SUPERSTRUCTURE							TWO ABUTMENTS						
55a	3/4"	220	32'-9"	11215	S		A8a	1"	24	30'-9"	2509	S	
55a1	3/4"	2	31'-6"	95	S		A8b	1"	8	22'-6"	612	S	
55a2	3/4"	2	29'-5"	89	S		A5a	3/4"	42	9'-1"	571	B	
55a3	3/4"	2	27'-4"	82	S		A5b	3/4"	72	10'-3"	1110	B	
55a4	3/4"	2	25'-4"	76	S		A4a	3/8"	8	22'-0"	184	S	
55a5	3/4"	2	23'-3"	70	S		A4b	3/8"	20	11'-0"	230	B	
55a6	3/4"	2	21'-2"	64	S		A4c	3/8"	24	8'-6"	213	S	
55a7	3/4"	2	19'-1"	58	S		A4d	3/8"	12	18'-7"	233	B	
55a8	3/4"	2	17'-1"	51	S		A4e	3/8"	6	13'-6"	85	B	
55a9	3/4"	2	15'-0"	45	S		A4f	3/8"	20	4'-0"	83	S	
55a10	3/4"	2	12'-11"	39	S		A4g	3/8"	6	15'-6"	97	B	
55a11	3/4"	2	10'-10"	33	S		A4h	3/8"	20	3'-6"	73	B	
55a12	3/4"	2	8'-10"	27	S								
55a13	3/4"	2	6'-9"	20	S								
55a14	3/4"	2	4'-8"	14	S								
55a15	3/4"	2	2'-7"	8	S								
TWO PIERS							REPLACEMENT BARS						
54a	5/8"	228	34'-1"	8104	B	"A"	F5a	3/4"	88	8'-10"	1108	B	
54a1	5/8"	2	32'-3"	68	B	31'-8"	F4a	5/8"	64	5'-0"	334	B	
54a2	5/8"	2	30'-2"	63	B	29'-7"	F4b	5/8"	6	33'-9"	211	S	
54a3	5/8"	2	28'-2"	59	B	27'-7"	P4a	5/8"	64	19'-0"	1268	S	
54a4	5/8"	2	26'-1"	55	B	25'-6"	P4b	5/8"	40	30'-0"	1252	S	
54a5	5/8"	2	24'-0"	50	B	23'-5"	P4c	5/8"	40	5'-0"	209	B	
54a6	5/8"	2	21'-11"	46	B	21'-4"	P4d	5/8"	50	3'-5"	178	B	
54a7	5/8"	2	19'-11"	42	B	19'-4"							
54a8	5/8"	2	17'-10"	37	B	17'-3"							
54a9	5/8"	2	15'-9"	33	B	15'-2"							
54a10	5/8"	2	13'-8"	29	B	13'-1"							
54a11	5/8"	2	11'-8"	24	B	11'-1"							
54a12	5/8"	2	9'-7"	20	B	9'-0"							
54a13	5/8"	2	7'-6"	16	B	6'-11"							
54a14	5/8"	2	5'-5"	11	B	4'-10"							
54a15	5/8"	2	3'-5"	7	B	2'-10"							
54b	5/8"	357	28'-0"	10426	S		RE8	1"	1	7'-4"	33	S	
54c	5/8"	54	28'-0"	1577	S		RE5	3/4"	1	6'-6"	10	S	
							RE4	3/8"	2	6'-1"	12	S	
							RE2	1/2"	1	5'-8"	4	S	
52a	1/2"	480	5'-0"	1603	B								
R5a	3/4"	12	4'-2"		B	Included with railing for payment. See 5th Dwg. C5B-1-47 for bending diagram.							
R5b	3/4"	8	7'-6"		B								

STATE OF OHIO DEPARTMENT OF HIGHWAYS BUREAU OF BRIDGES AND RAILROAD CROSSINGS						
REINFORCING STEEL LIST						
BRIDGE NO. MN-37-84 OVER SCIOTO RIVER						
MARION COUNTY					STA. 281+05	
MAR-37-(8.40-8.51)						
DESIGNED	DRAWN	TRACED	CHECKED	REVIEWED	DATE	REVIEWED
KAR	KAR	KET	W.C.K.	BFG	6-8-49	