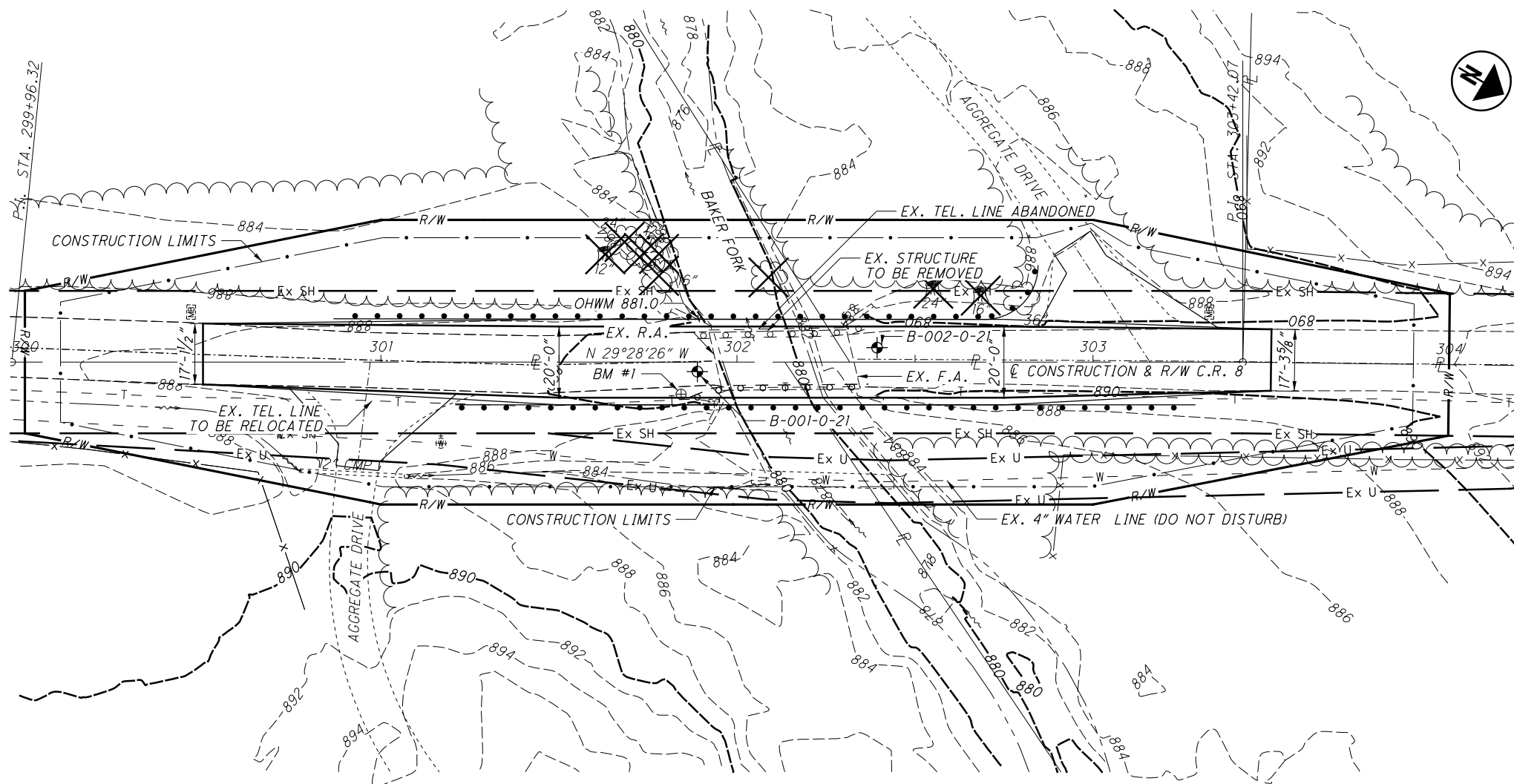
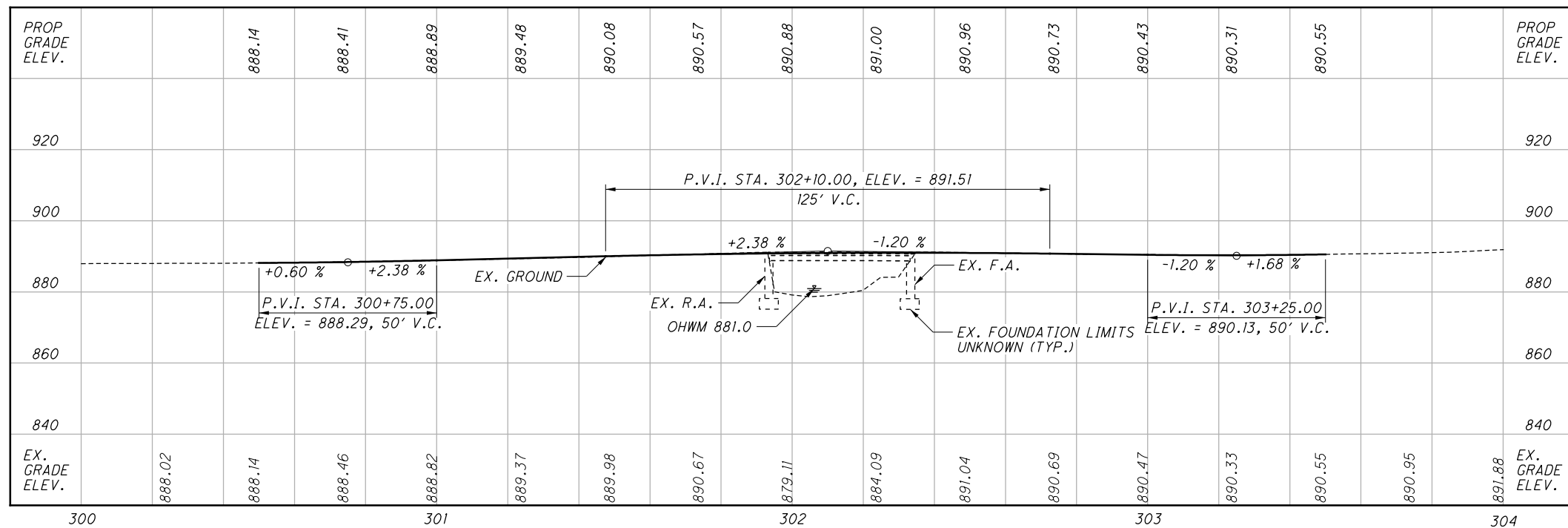


P:\PIK\TR\0059_PIK-CR8-5.75\00059\Design\Structures\PIK008_0575C_Sheets\008_0575C.dgn Sheet 3/30/2023 6:52:53 AM cmt008



PLAN



PROFILE ALONG C CONSTRUCTION - C.R. 8

BENCHMARK DATA

BM #1 STA. 297+55.73, ELEV. 891.601, OFFSET 10.48 LT.
 BM #2 STA. 301+84.30, ELEV. 891.033, OFFSET 9.01 RT.
 BM #3 STA. 306+88.02, ELEV. 902.286, OFFSET 10.37 RT.

DESIGN TRAFFIC:
 2023 ADT = 240 2023 ADTT = 8
 2043 ADT = 290 2043 ADTT = 9
 DIRECTIONAL DISTRIBUTION = 55%

LEGEND

◆ PROJECT BORING LOCATION

HYDRAULIC DATA EXISTING

DRAINAGE AREA = 11.8 SQ. MILES
 Q (10) = 2170 CFS V (10) = 13.46 FT/S
 Q (100) = 3960 CFS V (100) = 16.56 FT/S
 STRUCTURE CLEARS THE 10 YEAR DESIGN HW BY 2.18 FEET.

EXISTING STRUCTURE

TYPE: SINGLE SPAN STEEL BEAM WITH NON-COMPOSITE DECK AND ASPHALT OVERLAY ON CONCRETE ABUTMENTS
 SPANS: 38'-6"± C/C BEARINGS
 ROADWAY: 14'-0"± F/F RAIL
 VEHICULAR LIVE LOAD: UNKNOWN
 SKEW: 10° 00' 00" RIGHT FORWARD
 WEARING SURFACE: 6"± ASPHALT
 APPROACH SLABS: NONE
 ALIGNMENT: TANGENT
 CROWN: 0.016 FT/FT
 STRUCTURAL FILE NUMBER: 6630820
 DATE BUILT: 1955
 DISPOSITION: BRIDGE REPLACEMENT

PROPOSED STRUCTURE

TYPE: TBD
 SPANS: TBD
 ROADWAY: 24'-0" F/F RAILING
 VEHICULAR LIVE LOAD: HL-93
 FUTURE WEARING SURFACE: 0.06 KSF
 SKEW: TBD
 APPROACH SLABS: NONE
 ALIGNMENT: TANGENT
 CROWN: 0.016 FT/FT
 COORDINATES: LATITUDE 39°08'54.06"
 LONGITUDE 83°20'23.35"
 DECK AREA: TBD



DESIGNED	JMV	CHECKED	TWG
DRAWN	JMV	REVISED	
REVIEWED	GDJ	STRUCTURE FILE NUMBER	
DATE	2/21/2022		

PIKE COUNTY
 STA. X+XX.XX
 STA. X+XX.XX

SITE PLAN

BRIDGE NO. PIK-C00008-05.750
 OVER BAKER FORK

PIK-C.R. 8-5.75
 PID No. 116164