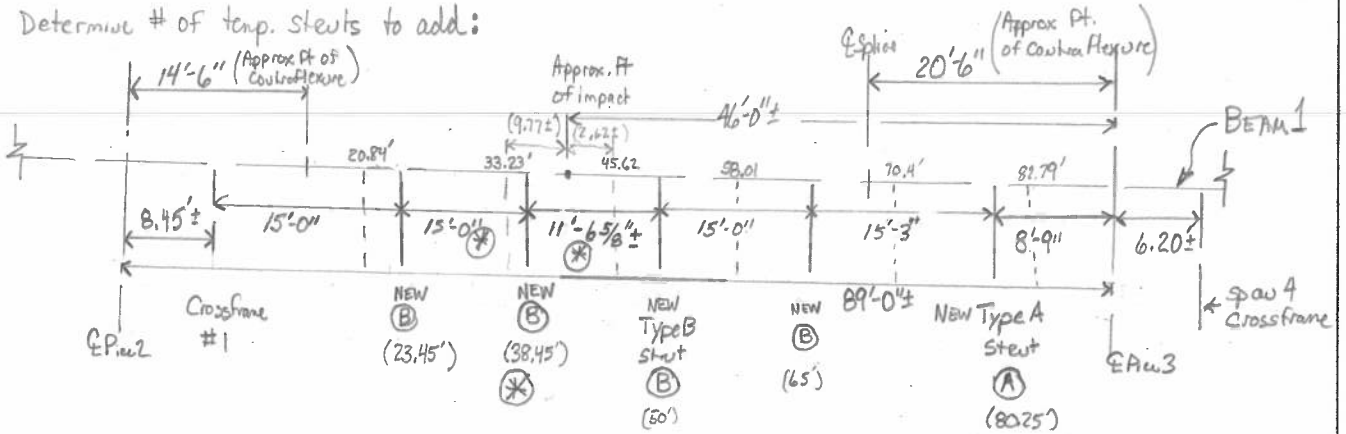


TEMPORARY Compression Flange Bracing

Cross frame #1 nearest Pier 2 is intact; Cross frame #2 is broken (over median); cross frames #3-7 are removed.

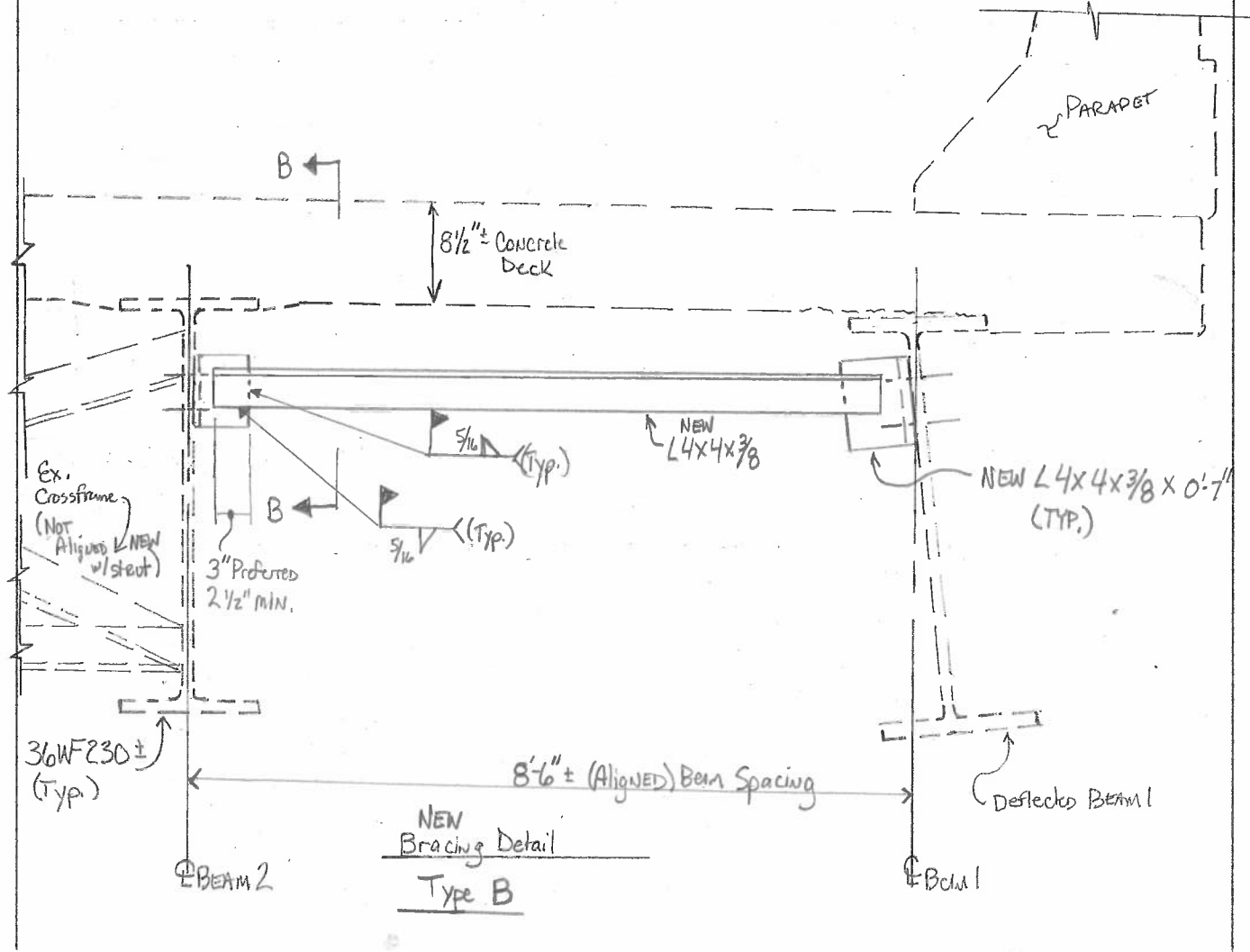
Determine # of temp. struts to add:



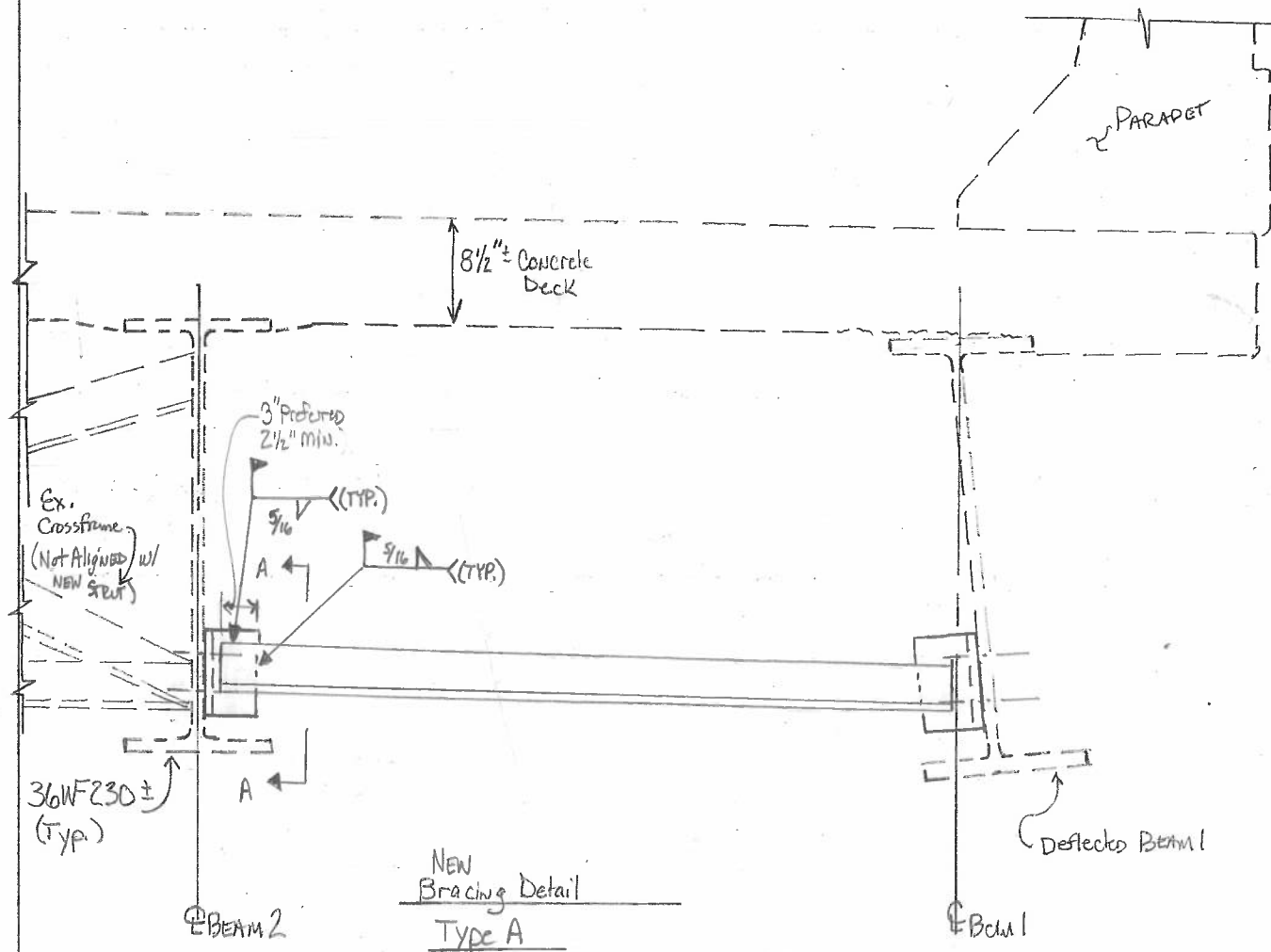
NEED 1 -Type A strut
NEED 4 -Type B struts

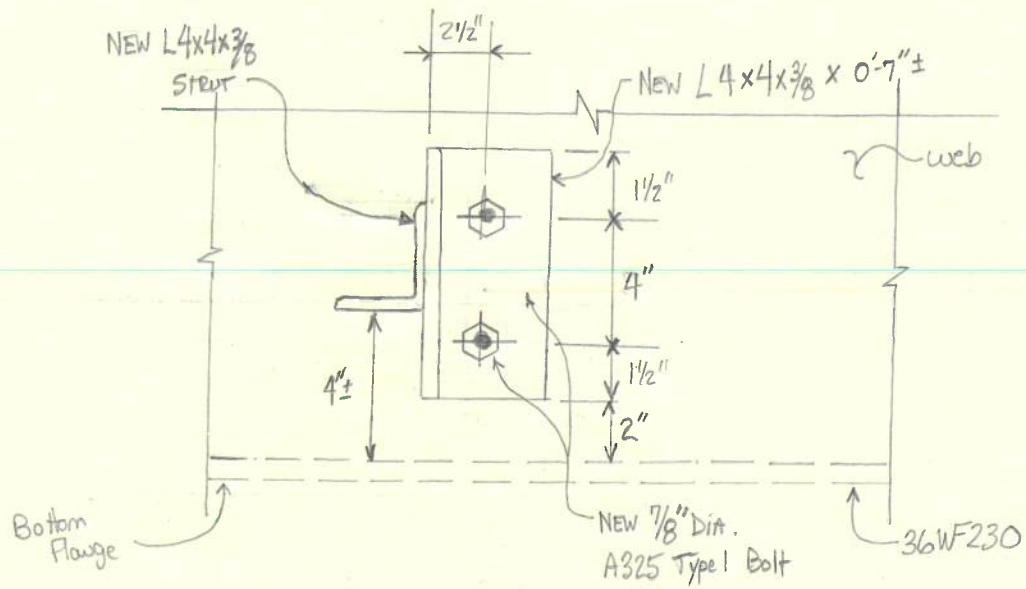
SPAN 3 - Beam 1.
Location of Temporary Struts

* Adjust location if needed to avoid work over lane line.

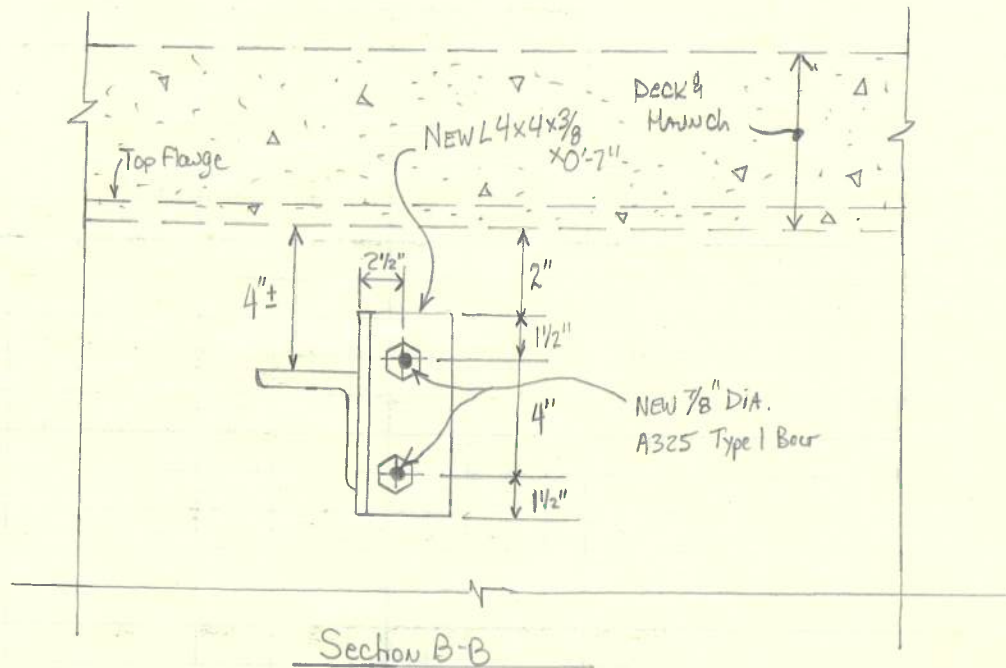


TEMPORARY Compression Flange Bracing (Cont.)






Section A-A



Section B-B

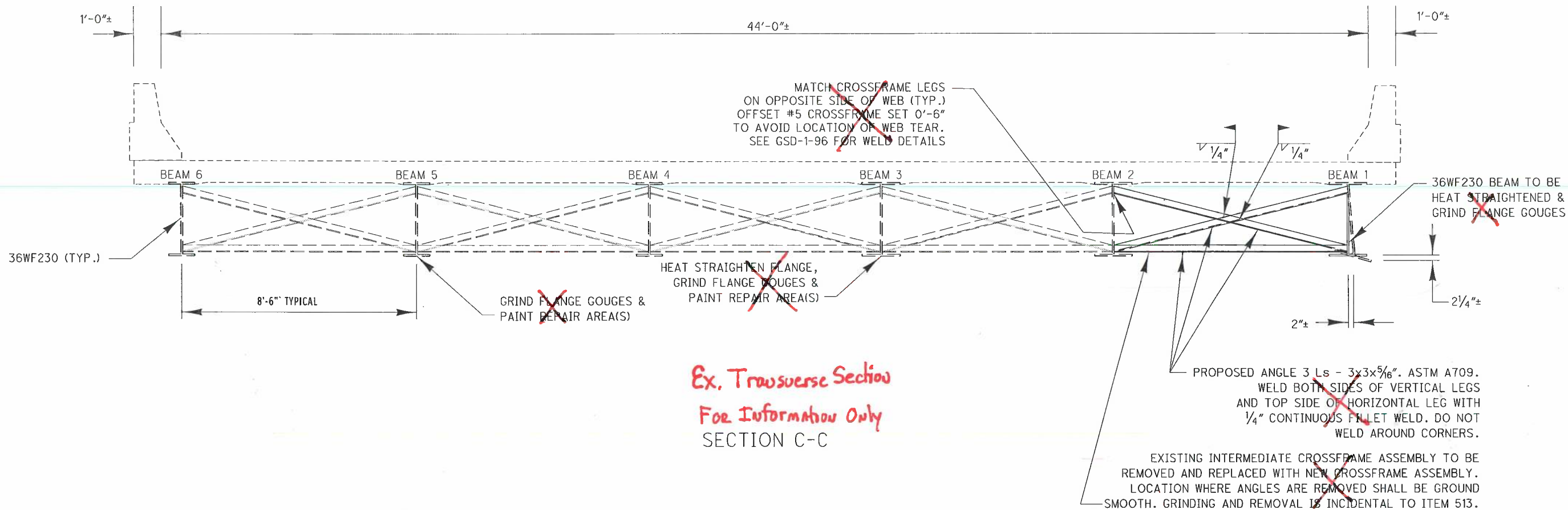
LEGEND

 Field Bolt, Nut & Full Head.
New material to new or existing steel

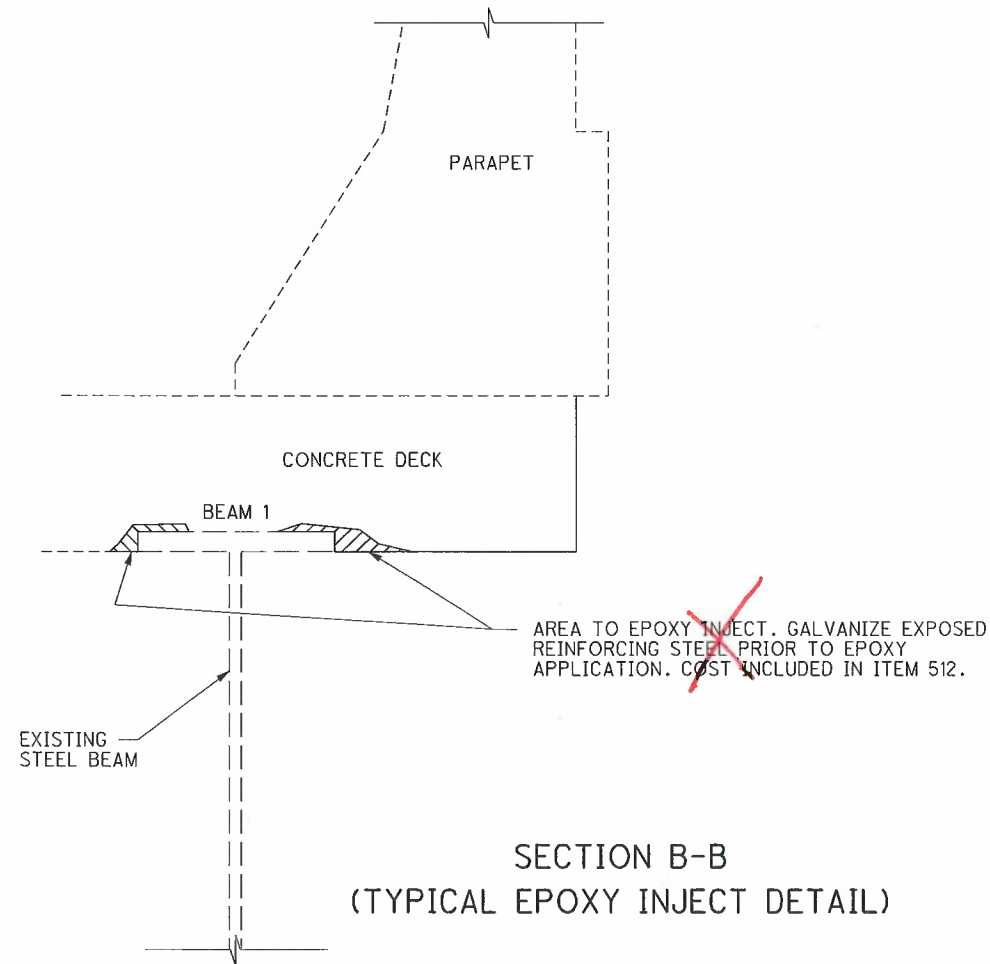
Materials

Structural Steel - ASTM A709, GR 50
(Do Not need to paint)

5/6



Ex. Transverse Section
For Information Only
SECTION C-C



SECTION B-B
(TYPICAL EPOXY INJECT DETAIL)

- NOTES:
- 1) FOR WELD DETAILS NOT SHOWN, SEE THE ARCHIVED GSD-1-96, DATED 7/19/02. SEE THE GENERAL NOTES, SHEET 2/12 FOR WEB ADDRESS LOCATION.
 - 2) SEE SHEET 2/4 FOR SECTION B-B LOCATION AND SHEET 1/4 FOR SECTION C-C LOCATION.

DESIGN AGENCY ODOT DISTRICT THREE ENGINEERING	DATE 01/21	REVIEWED KAK	DESIGNED NRF	STRUCTURE FILE NUMBER 7001517
STRUCTURE DETAILS III RIC-30-1642 REED ROAD OVER USR 30	DESIGNED NRF	DRAWN NRF	CHECKED KCK	REVISIONS REVISED
RIC-30-16.42 PID No. 114029	4	4	12	12

\\ProjectData\14029\Design\Structures\RC-30-1642.dgn

