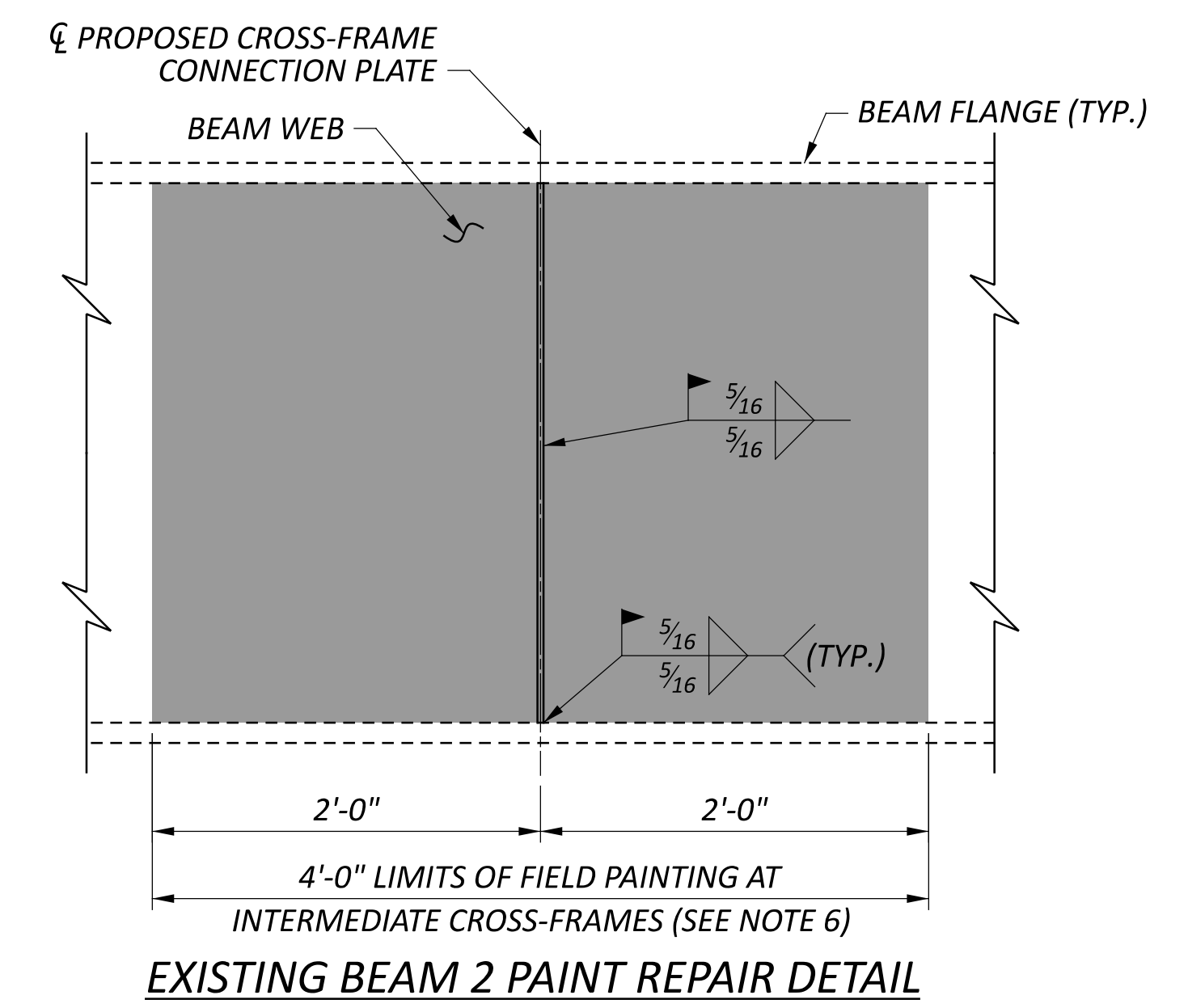


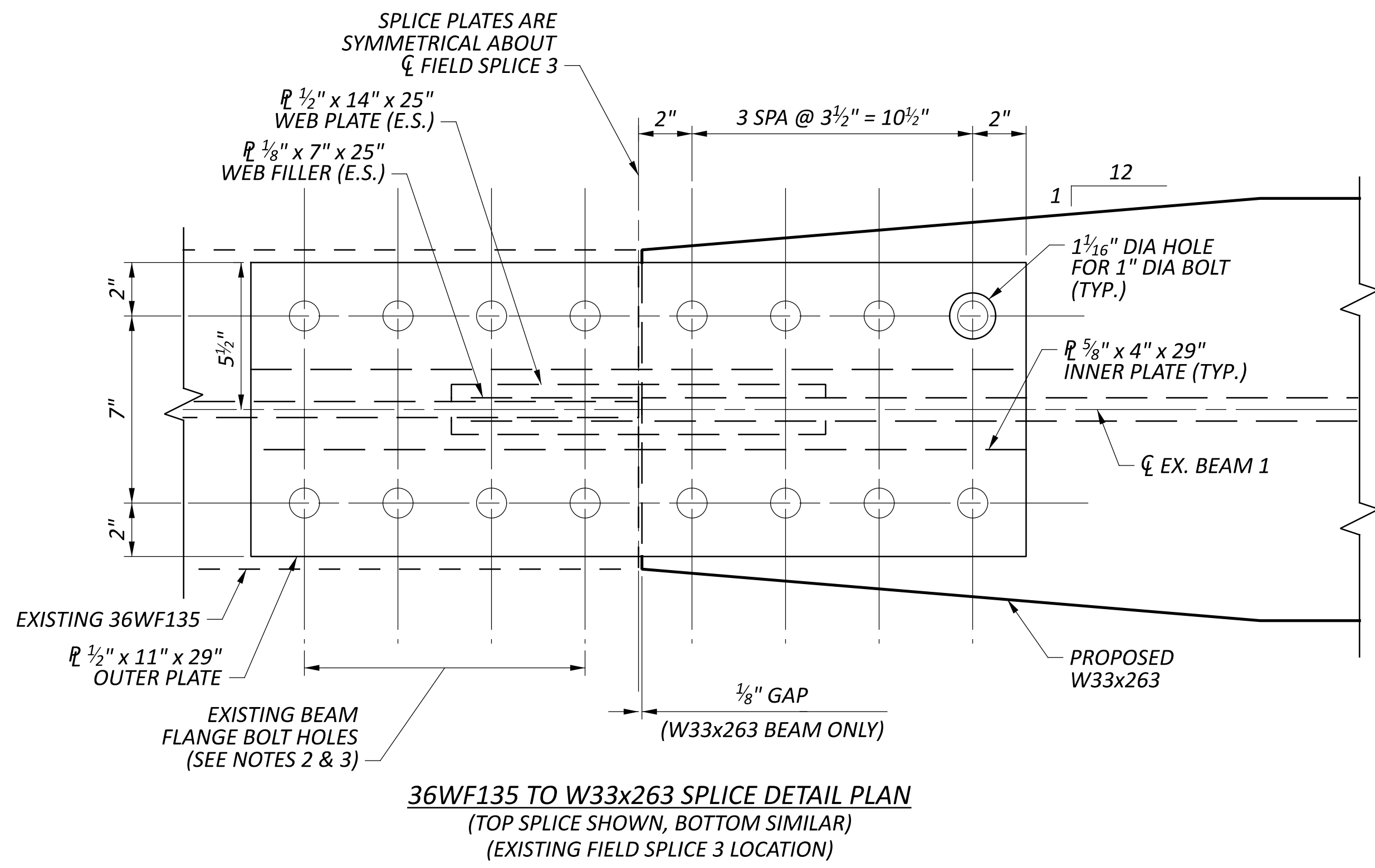
BEAM 1 DEFLECTIONS AND CAMBER (INCHES)					
SPAN LOCATION	A	B	C	D	E
DEFLECTION DUE TO WEIGHT OF STEEL	1/8	3/16	3/16	3/16	1/8
DEFLECTION DUE TO REMAINING DEAD LOAD*	1/16	1/8	1/8	1/8	1/16
ADJUSTMENT FOR GEOMETRY**	1	1 3/8	1 7/16	1 1/4	3/4
REQUIRED SHOP CAMBER	1 3/16	1 11/16	1 3/4	1 9/16	15/16

\* REMAINING DEAD LOAD DEFLECTION INCLUDES WEIGHT OF THE CONCRETE DECK AND RAILING. VALUES SHOWN ARE EQUAL TO 25% OF THE ANTICIPATED WET CONCRETE DEFLECTIONS OF THESE ELEMENTS TO ACCOUNT FOR THE STIFFNESS OF THE HARDENED CONCRETE.  
 \*\* CAMBER ADJUSTMENT FOR GEOMETRY IS BASED ON THE VALUES SHOWN IN THE ORIGINAL BRIDGE PLANS FOR THE ADJUSTMENT REQUIRED FOR VERTICAL CURVE.

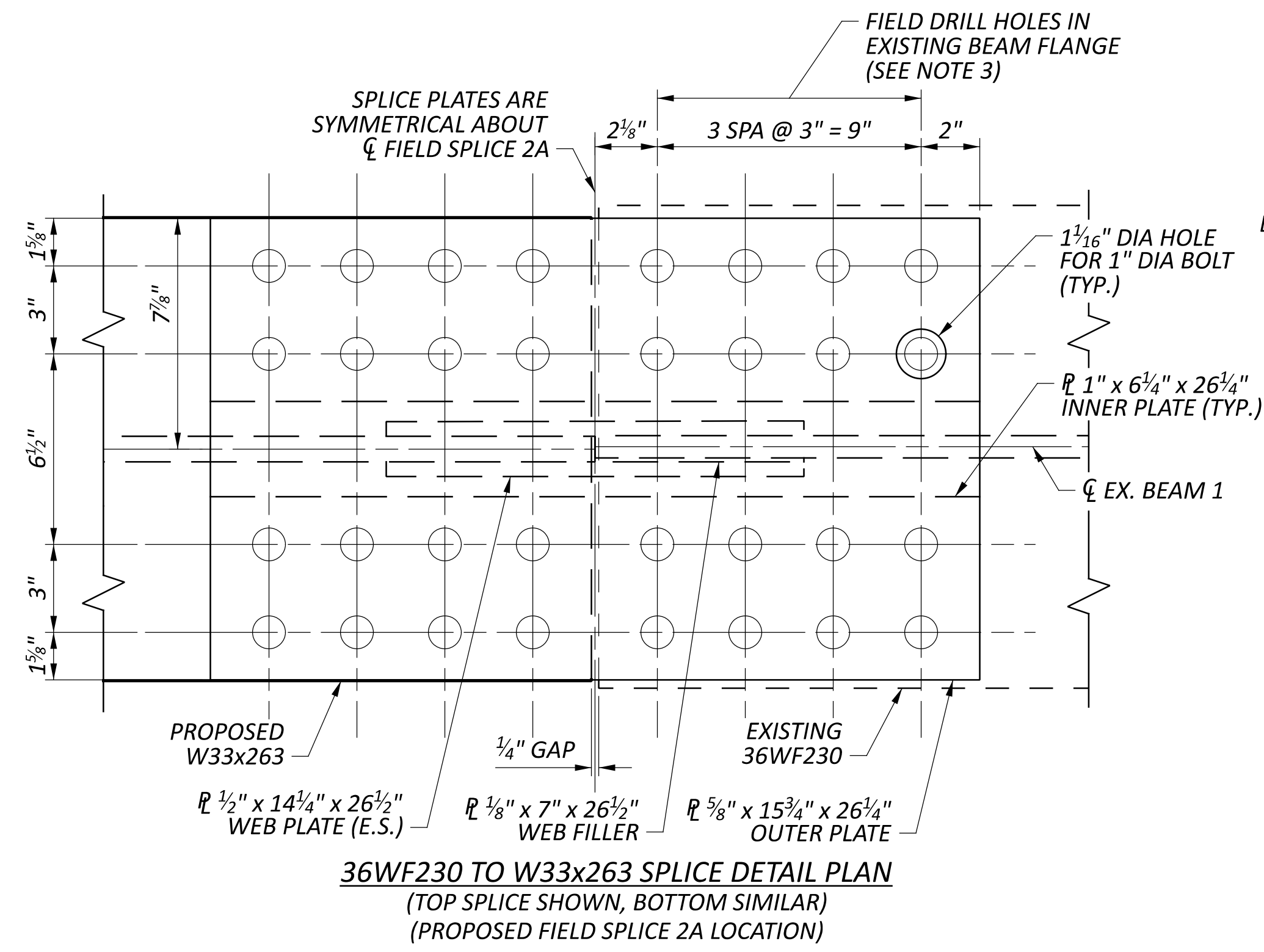


- NOTES:**
- FOR GENERAL NOTES, SEE SHEET 2 OF 12.
  - FOR REMOVAL DETAILS, SEE SHEET 4 OF 12.
  - FOR FRAMING PLAN AND BEAM ELEVATION, SEE SHEET 5 OF 12.
  - FOR PROPOSED CONSTRUCTION SEQUENCE SEE SHEET 10 OF 12.
  - OMIT CONNECTION PLATE ON EXPOSED SIDE OF FASCIA BEAM.
  - EXISTING STRUCTURAL STEEL COATINGS DAMAGED BY THE INSTALLATION OF THE PROPOSED CONNECTION PLATES AND CROSS-FRAMES SHALL BE REPAIRED ACCORDING TO C&MS 514.22 USING AN OZEU THREE-COAT PAINT SYSTEM. SEE DETAIL THIS SHEET FOR COATING REPAIR LIMITS. THE FINISH COAT COLOR SHALL MATCH THE COLOR OF THE EXISTING BEAMS.
  - ALL BOLTS SHALL BE ASTM F3125 GRADE A325, TYPE I. THREADS ARE ASSUMED TO BE EXCLUDED FROM THE SHEAR PLANE. FOR ADDITIONAL INFORMATION, SEE ODOT STD. DWG. GSD-1-19.
  - STRUCTURAL STEEL FOR CROSS-FRAME MEMBERS AND CONNECTION PLATES SHALL BE ASTM A709 GRADE 50.
  - WHERE A SHAPE OR PLATE IS DESIGNATED (CVN), FURNISH MATERIAL THAT MEETS THE MINIMUM NOTCH TOUGHNESS REQUIREMENTS AS SPECIFIED IN C&MS 711.01.
  - DEFLECTIONS AND GEOMETRY ADJUSTMENT VALUES ARE GIVEN TO THE NEAREST 1/16 INCH.

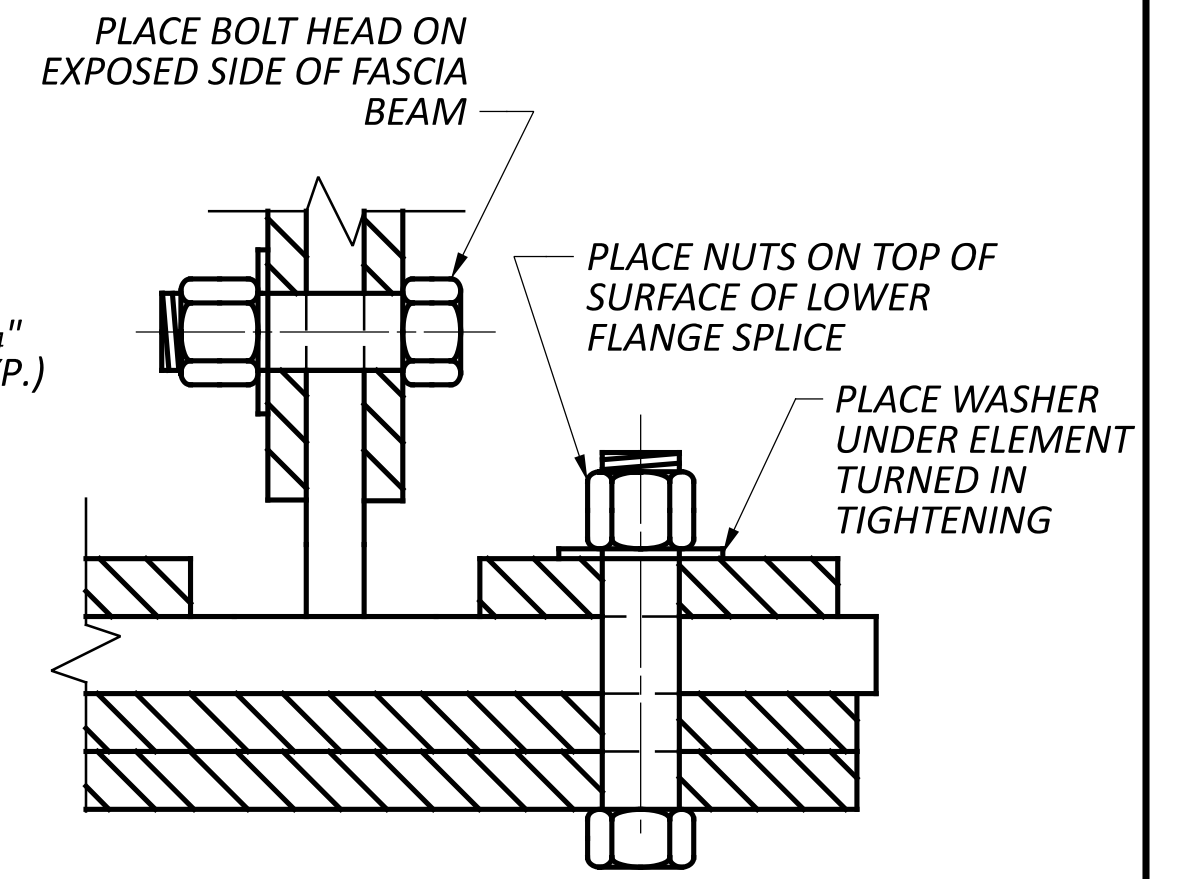
SFN 7001517  
 DESIGN AGENCY  
  
 600 SUPERIOR AVENUE  
 SUITE 1700  
 CLEVELAND, OH 44114  
 216.912.4240  
 DESIGNER: NJH  
 CHECKER: JTW  
 REVIEWER:  
 JMS 11/26/25  
 PROJECT ID: 122940  
 SUBSET: 6 TOTAL: 12  
 SHEET: 26 TOTAL: 32



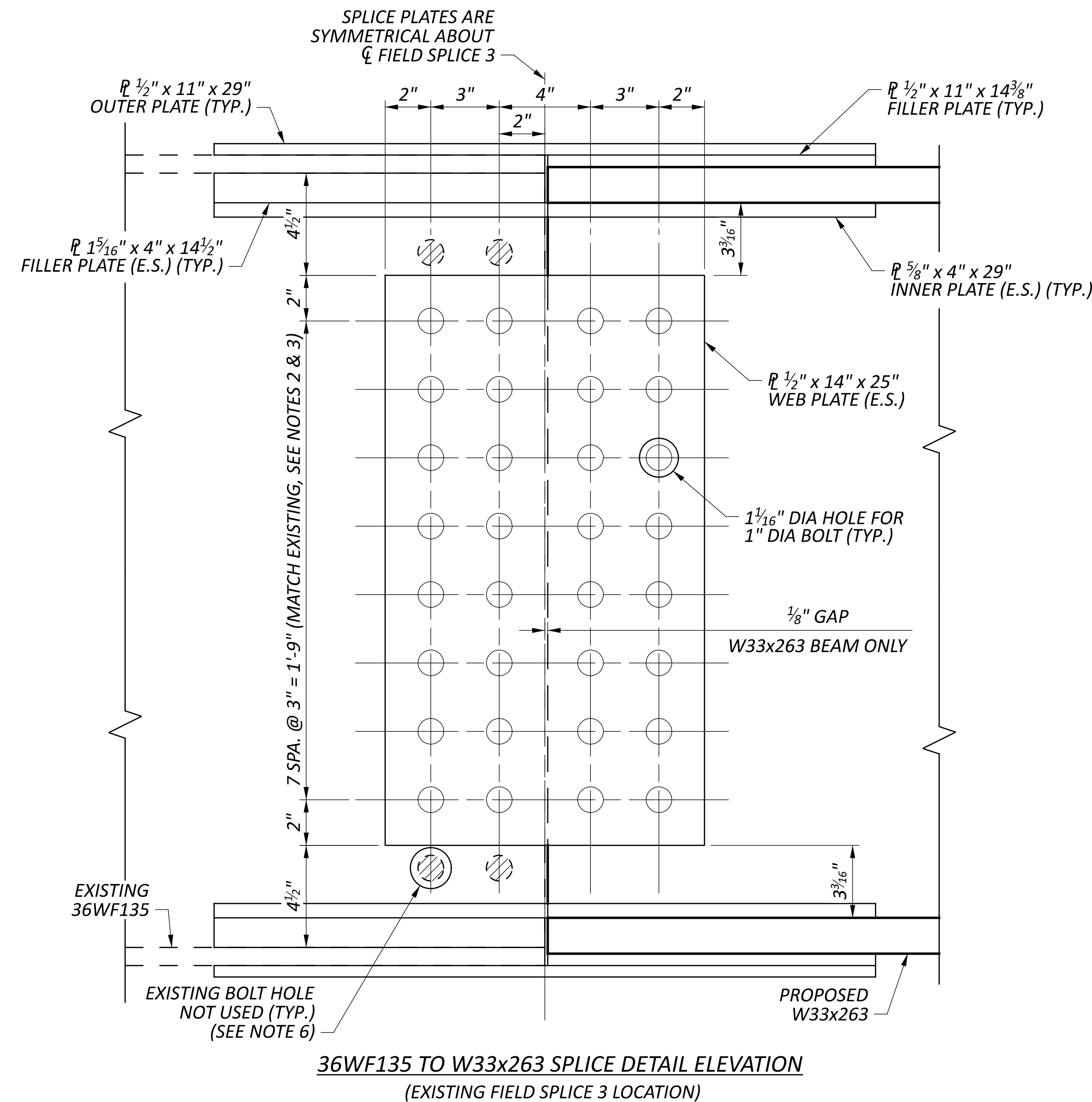
**36WF135 TO W33x263 SPLICE DETAIL PLAN**  
 (TOP SPLICE SHOWN, BOTTOM SIMILAR)  
 (EXISTING FIELD SPLICE 3 LOCATION)



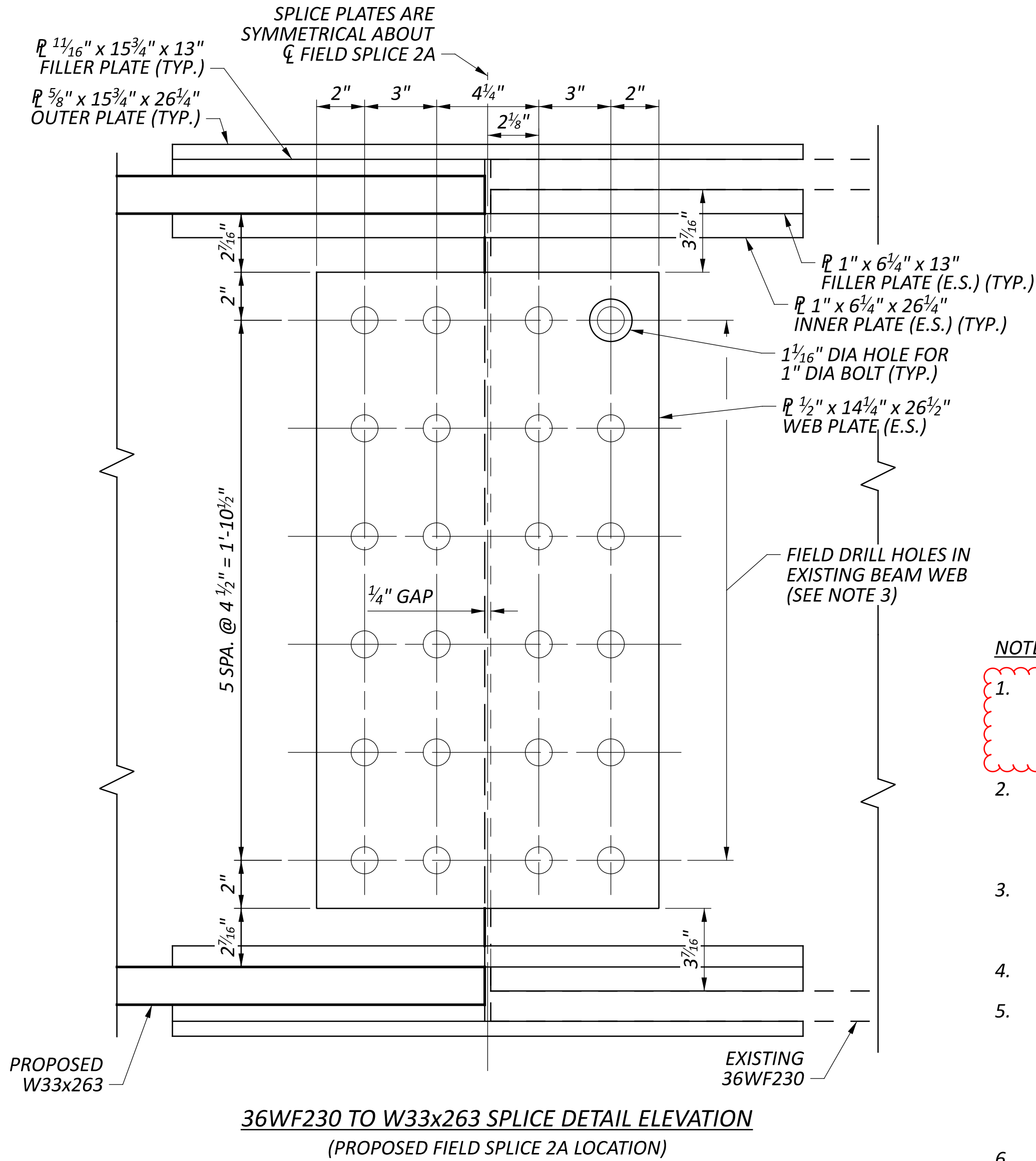
**36WF230 TO W33x263 SPLICE DETAIL PLAN**  
 (TOP SPLICE SHOWN, BOTTOM SIMILAR)  
 (PROPOSED FIELD SPLICE 2A LOCATION)



**BOLT ORIENTATION DETAIL**



**36WF135 TO W33x263 SPLICE DETAIL ELEVATION**  
 (EXISTING FIELD SPLICE 3 LOCATION)



**36WF230 TO W33x263 SPLICE DETAIL ELEVATION**  
 (PROPOSED FIELD SPLICE 2A LOCATION)

**NOTES:**

1. ALL STRUCTURAL STEEL SPLICE PLATES SHALL BE ASTM A709 GRADE 50 AND SHALL BE DESIGNATED (CVN). ALL FILLER PLATES SHALL BE ASTM A709 GRADE 50 AND SHALL NOT CONSIST OF MORE THAN TWO PLATES.
2. EXISTING BEAM BOLT HOLE LOCATIONS ARE BASED ON EXISTING PLANS. CONTRACTOR SHALL FIELD VERIFY EXISTING BOLT HOLE LOCATIONS PRIOR TO STEEL FABRICATION.
3. FOR ADDITIONAL INFORMATION, SEE GENERAL NOTE FOR ITEM 513 - STRUCTURAL STEEL, LEVEL 3, AS PER PLAN ON SHEET 2 OF 12.
4. FOR FRAMING PLAN, SEE SHEET 5 OF 12.
5. HIGH STRENGTH BOLTS SHALL BE 1" DIA. ASTM F3125 GRADE A325, TYPE 1 IN 1 1/16" DIA HOLES. EXCLUDE THREADS FROM THE SHEAR PLANES FOR THE FLANGES OF SPLICE 2A. THREADS ARE PERMITTED TO BE INCLUDED IN THE SHEAR PLANES FOR ALL WEB SPLICES AND THE FLANGE SPLICES OF EXISTING SPLICE 3.
6. FILL ALL EXISTING EMPTY BOLT HOLES WITH 5/8" DIA. ASTM F3215 GRADE A325, TYPE 1 HIGH STRENGTH BOLTS.

SFN	7001517
DESIGN AGENCY	
600 SUPERIOR AVENUE SUITE 1700 CLEVELAND, OH 44114 216.912.4240	
DESIGNER	CHECKER
DGJ	JTW
REVIEWER	
JMS	11/26/25
PROJECT ID	122940
SUBSET	TOTAL
7	12
SHEET	TOTAL
27	32

