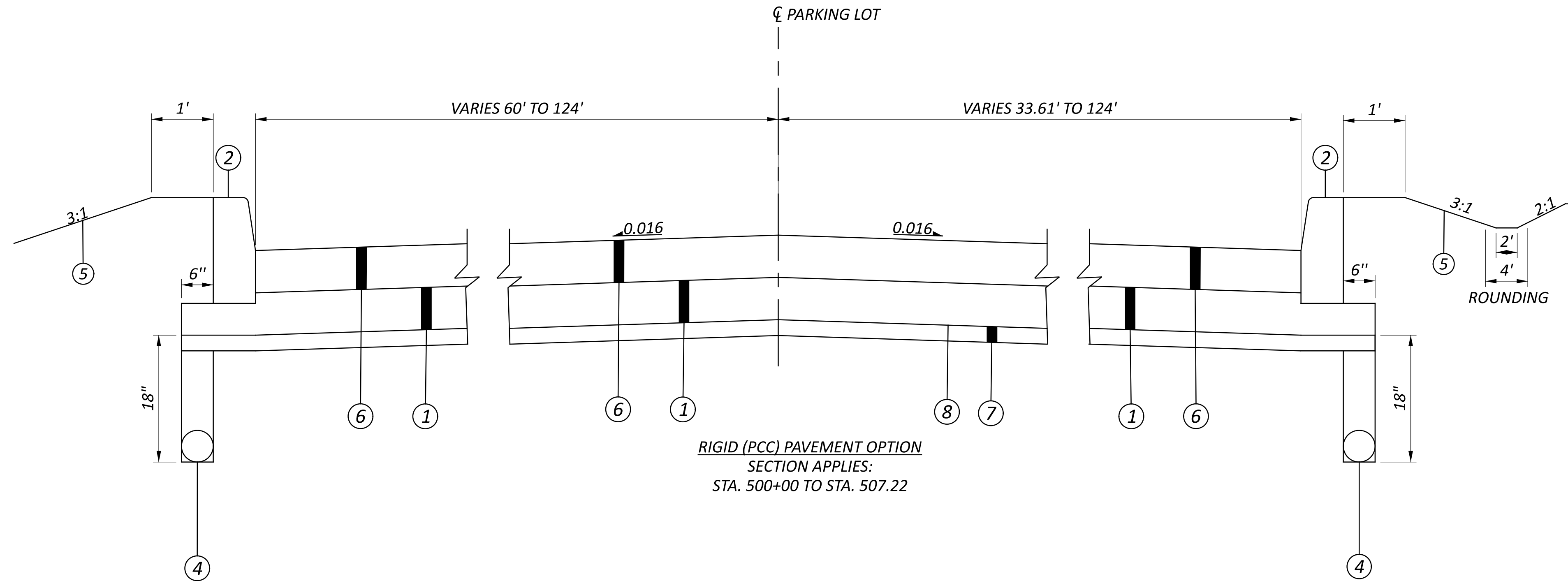
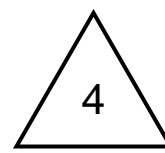
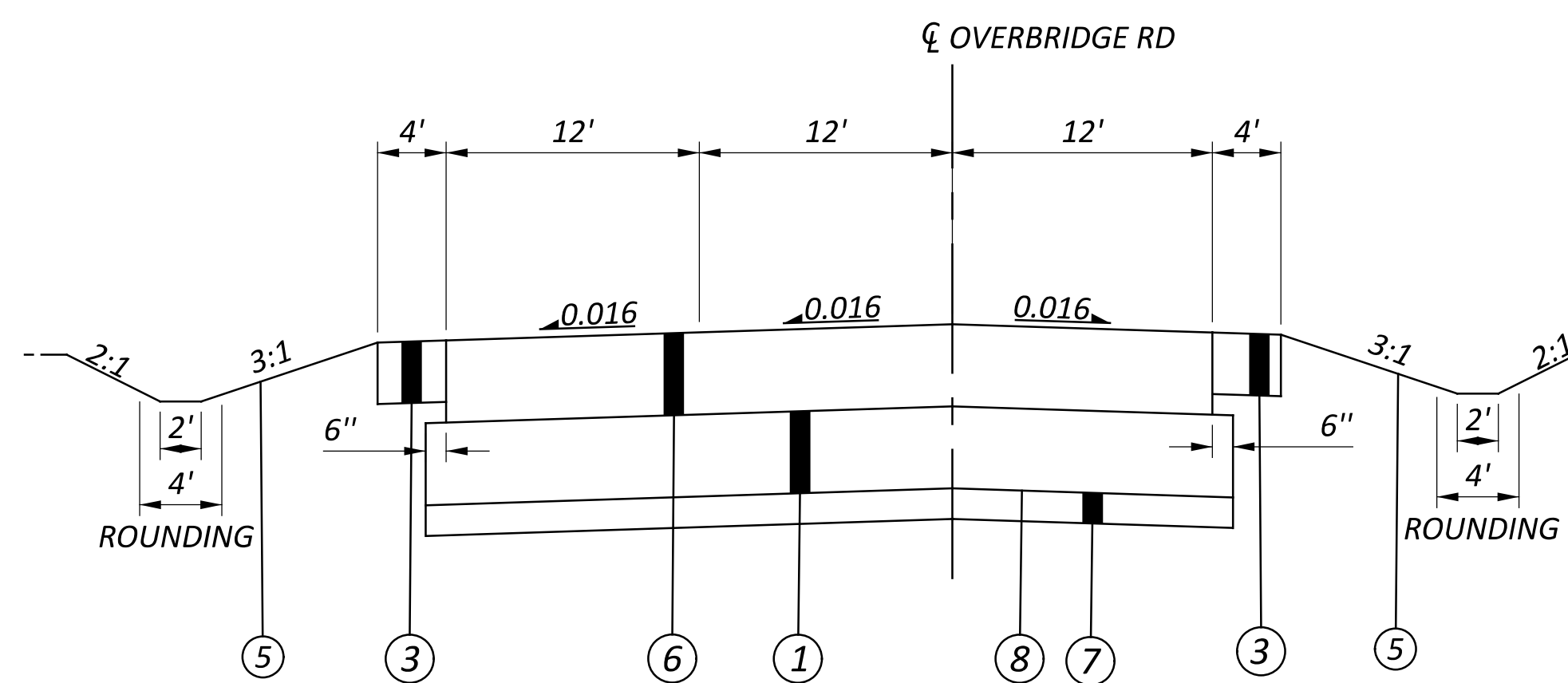


LEGEND

- 1 ITEM 304 - 8" AGGREGATE BASE
- 2 ITEM 609 - CURB, TYPE 7
- 3 ITEM 411 - 6" STABILIZED CRUSHED AGGREGATE
- 4 ITEM 605 - 6" BASE PIPE UNDERDRAINS
- 5 ITEM 659 - SEEDING AND MULCHING
- 6 ITEM 452 - 8" NON-REINFORCED CONCRETE PAVEMENT
- 7 ITEM 206 - 12" CEMENT STABILIZED SUBGRADE
- 8 ITEM 206 - CURING COAT



RIGID (PCC) PAVEMENT OPTION
 SECTION APPLIES:
 STA. 500+00 TO STA. 507.22



RIGID (PCC) PAVEMENT OPTION
 SECTION APPLIES:
 STA. 10+32 TO STA. 13+00

NOTE:
 JOINT DETAILS OF CONCRETE
 PAVEMENT SHALL CONFORM TO
 STANDARD DRAWINGS BP-2.1
 AND BP-2.2.

SHEET NUM.											OFFICE CALCS	PART.	ITEM	ITEM EXT	GRAND TOTAL	UNIT	DESCRIPTION	SEE SHEET NO.
4	17	18	19	22	27						01/NFP							
ROADWAY																		
LS											LS	201	11001	LS		CLEARING AND GRUBBING, AS PER PLAN	4	
		1,330									1,330	202	23000	1,330	SY	PAVEMENT REMOVED		
				6,044	500						6,544	203	10000	6,544	CY	EXCAVATION		
				4,208	288						4,496	203	20000	4,496	CY	EMBANKMENT		
		6									6	204	45000	6	HOUR	PROOF ROLLING		
36	18,721										18,757	206	15010	18,757	SY	CEMENT STABILIZED SUBGRADE, 12 INCHES DEEP		
1	484										485	206	10500	485	TON	CEMENT		
36	18,721										18,757	206	11000	18,757	SY	CURING COAT		
72											72	607	98000	72	FT	FENCE, MISC.: WOODEN SLAT FENCE	4	
LS											LS	623	50000	LS		PRECONSTRUCTION SURVEY MONUMENT VERIFICATION AND REPORT		
LS											LS	623	51000	LS		POST CONSTRUCTION SURVEY MONUMENT VERIFICATION AND REPORT		
8											8	SPECIAL	69050600	8	EACH	BOLLARD	4	
LS											LS	878	25000	LS		INSPECTION AND COMPACTION TESTING OF UNBOUND MATERIALS		
EROSION CONTROL																		
15.1											15.1	601	32204	15.1	CY	ROCK CHANNEL PROTECTION, TYPE C WITH GEOTEXTILE FABRIC		
2											2	659	00100	2	EACH	SOIL ANALYSIS TEST		
968		383.5									1,351.5	659	00300	1,351.5	CY	TOPSOIL		
				6,222	666						6,888	659	10000	6,888	SY	SEEDING AND MULCHING		
436											436	659	14000	436	SY	REPAIR SEEDING AND MULCHING		
436											436	659	15000	436	SY	INTER-SEEDING		
1.22											1.22	659	20000	1.22	TON	COMMERCIAL FERTILIZER		
1.8											1.8	659	31000	1.8	ACRE	LIME		
49											49	659	35000	49	MGAL	WATER		
		3,451									3,451	670	00500	3,451	SY	SLOPE EROSION PROTECTION		
		LS									LS	832	15000	LS		STORM WATER POLLUTION PREVENTION PLAN		
		LS									LS	832	15002	LS		STORM WATER POLLUTION PREVENTION INSPECTIONS		
		LS									LS	832	15010	LS		STORM WATER POLLUTION PREVENTION INSPECTION SOFTWARE		
										20,000	20,000	832	30000	20,000	EACH	EROSION CONTROL		
DRAINAGE																		
0.5											0.5	602	20000	0.5	CY	CONCRETE MASONRY		
1,843											1,843	605	14000	1,843	FT	6" BASE PIPE UNDERDRAINS		
80											80	611	00510	80	FT	6" CONDUIT, TYPE F FOR UNDERDRAIN OUTLETS		
574											574	611	06100	574	FT	15" CONDUIT, TYPE C		
273											273	611	07600	273	FT	18" CONDUIT, TYPE C		
106											106	611	09100	106	FT	21" CONDUIT, TYPE C		
78											78	611	10600	78	FT	24" CONDUIT, TYPE C		
6											6	611	98150	6	EACH	CATCH BASIN, NO. 3		
7											7	611	99574	7	EACH	MANHOLE, NO. 3		
PAVEMENT																		
6	4,160										4,166	304	20000	4,166	CY	AGGREGATE BASE		
	54										54	411	10000	54	CY	STABILIZED CRUSHED AGGREGATE		
28	18,620										18,648	452	12010	18,648	SY	8" NON-REINFORCED CONCRETE PAVEMENT, CLASS QC 1P		
1,915											1,915	609	28000	1,915	FT	CURB, TYPE 7		

GENERAL SUMMARY

DESIGN AGENCY	
DESIGNER	US
REVIEWER	MAH 01/12/26
PROJECT ID	122886
SHEET TOTAL	P.14 46

SHEET NUM.									PART.	ITEM	ITEM	GRAND	UNIT	DESCRIPTION	SEE SHEET NO.
5	6	17	33	36	39				01/NFP	EXT	TOTAL				
														LIGHTING	
					9				9	625	00450	9	EACH	CONNECTION, FUSED PULL APART	
					1				1	625	00480	1	EACH	CONNECTION, UNFUSED PERMANENT	
					1				1	625	10503	1	EACH	LIGHT POLE (INSTALLATION ONLY), AS PER PLAN, CONVENTIONAL, AT20B40	37
					8				8	625	10503	8	EACH	LIGHT POLE (INSTALLATION ONLY), AS PER PLAN, LIGHT TOWER B45 & BB45	37
					1				1	625	14100	1	EACH	LIGHT POLE FOUNDATION, 24" X 8' DEEP	
					3				3	625	15700	3	EACH	LIGHT TOWER FOUNDATION, MISC.: 36" X 13' DEEP	37
					5				5	625	15700	5	EACH	LIGHT TOWER FOUNDATION, MISC.: 36" X 8' DEEP	37
					5,419				5,419	625	23200	5,419	FT	NO. 4 AWG 2400 VOLT DISTRIBUTION CABLE	
					490				490	625	23400	490	FT	NO. 10 AWG POLE AND BRACKET CABLE	
					1,709				1,709	625	25500	1,709	FT	CONDUIT, 3", 725.04	
					1				1	625	26252	1	EACH	LUMINAIRE, CONVENTIONAL, SOLID STATE (LED), TYPE II, 240V	
					12				12	625	26262	12	EACH	LUMINAIRE, HIGH MAST, SOLID STATE (LED), TYPE V, 240V	
					1,498				1,498	625	29000	1,498	FT	TRENCH	
					158				158	625	29400	158	FT	TRENCH IN PAVED AREA	
					2				2	625	30706	2	EACH	PULL BOX, 725.08, 24"	
					17				17	625	32000	17	EACH	GROUND ROD	
					1				1	625	34001	1	EACH	POWER SERVICE, AS PER PLAN	37
					1,709				1,709	625	36010	1,709	FT	UNDERGROUND WARNING/MARKING TAPE	
														TRAFFIC CONTROL	
				62					62	630	03100	62	FT	GROUND MOUNTED SUPPORT, NO. 3 POST	
				203					203	630	04100	203	FT	GROUND MOUNTED SUPPORT, NO. 4 POST	
				95					95	630	07000	95	FT	GROUND MOUNTED STRUCTURAL BEAM SUPPORT, W8X18	
				149					149	630	07500	149	FT	GROUND MOUNTED STRUCTURAL BEAM SUPPORT, W10X22	
				686					686	630	80100	686	SF	SIGN, FLAT SHEET	
				10					10	630	84500	10	EACH	GROUND MOUNTED STRUCTURAL BEAM SUPPORT FOUNDATION	
				5					5	630	84900	5	EACH	REMOVAL OF GROUND MOUNTED SIGN AND DISPOSAL	
				5					5	630	85100	5	EACH	REMOVAL OF GROUND MOUNTED SIGN AND REERECTION	
				9					9	630	86002	9	EACH	REMOVAL OF GROUND MOUNTED POST SUPPORT AND DISPOSAL	
	2,144								2,144	642	30000	2,144	FT	REMOVAL OF PAVEMENT MARKING	
			0.12						0.12	646	10010	0.12	MILE	EDGE LINE, 6"	
			0.06						0.06	646	10200	0.06	MILE	CENTER LINE	
			224						224	646	10310	224	FT	CHANNELIZING LINE, 12"	
			53						53	646	10400	53	FT	STOP LINE	
			1,910						1,910	646	10601	1,910	FT	TRANSVERSE/DIAGONAL LINE, AS PER PLAN	33
			6,210						6,210	646	20200	6,210	FT	PARKING LOT STALL MARKING	
			4						4	646	20300	4	EACH	LANE ARROW	
			2						2	646	20400	2	EACH	WORD ON PAVEMENT, 72"	
														MAINTENANCE OF TRAFFIC	
	0.35								0.35	614	22110	0.35	MILE	WORK ZONE EDGE LINE, CLASS I, 6", 642 PAINT	
	1,068								1,068	614	23200	1,068	FT	WORK ZONE CHANNELIZING LINE, CLASS I, 8", 642 PAINT	
110									110	616	10000	110	MGAL	WATER	

GENERAL SUMMARY


DESIGN AGENCY

 DESIGNER
 US
 REVIEWER
 MAH 01/12/26
 PROJECT ID
 122886
 SHEET TOTAL
 P.15 46

SHEET NO.	LOCATION	STATION		SIDE	LENGTH FT	AVG. WIDTH FT	PAVEMENT AREA (CAD) SF	PAVEMENT AREA SY	202	204	206	206	206	411		304	452				
		PAVEMENT REMOVED SY	PROOF ROLLING HOUR						CEMENT TON	CURING COAT SY	CEMENT STABILIZED SUBGRADE DEPTH: 12 in SY	STABILIZED CRUSHED AGGREGATE DEPTH: 6 in CY	AGGREGATE BASE DEPTH: 8 in CY	8" NON-REINFORCED CONCRETE PAVEMENT, CLASS QC-1P DEPTH: 8 in SY							
		FROM	TO																		
CENTER LINE OF PARKING LOT																					
P.20	PARKING LOT	500+00	500+60	RT/LT	60	94	5655	628		0.2	17	639	639			142	628				
P.20	PARKING LOT	500+60	501+06	RT/LT	46	120	5532	615		0.2	16	620	620			138	615				
P.20	PARKING LOT	501+06	501+21	RT/LT	15	184	2760	307		0.1	8	308	308			69	307				
P.20	PARKING LOT	501+21	505+74	RT/LT	453	248	112344	12483		4.2	324	12533	12533			2785	12483				
P.20	PARKING LOT	505+74	506+86	RT/LT	109	176	19164	2129		0.7	55	2129	2129			473	2129				
P.20	PARKING LOT	506+86	507+22	RT/LT	39	232	9033	1004	180	0.3	26	1005	1005	2		223	1004				
CENTER LINE OF OVERBRIDGE ROAD																					
P.20	OVERBRIDGE ROAD	10+32	13+00	RT/LT	267	49	13092	1455	1150	0.5	38	1487	1487	52		330	1455				
TOTALS CARRIED TO GENERAL SUMMARY									1330	6	484	18721	18721	54		4160	18620				

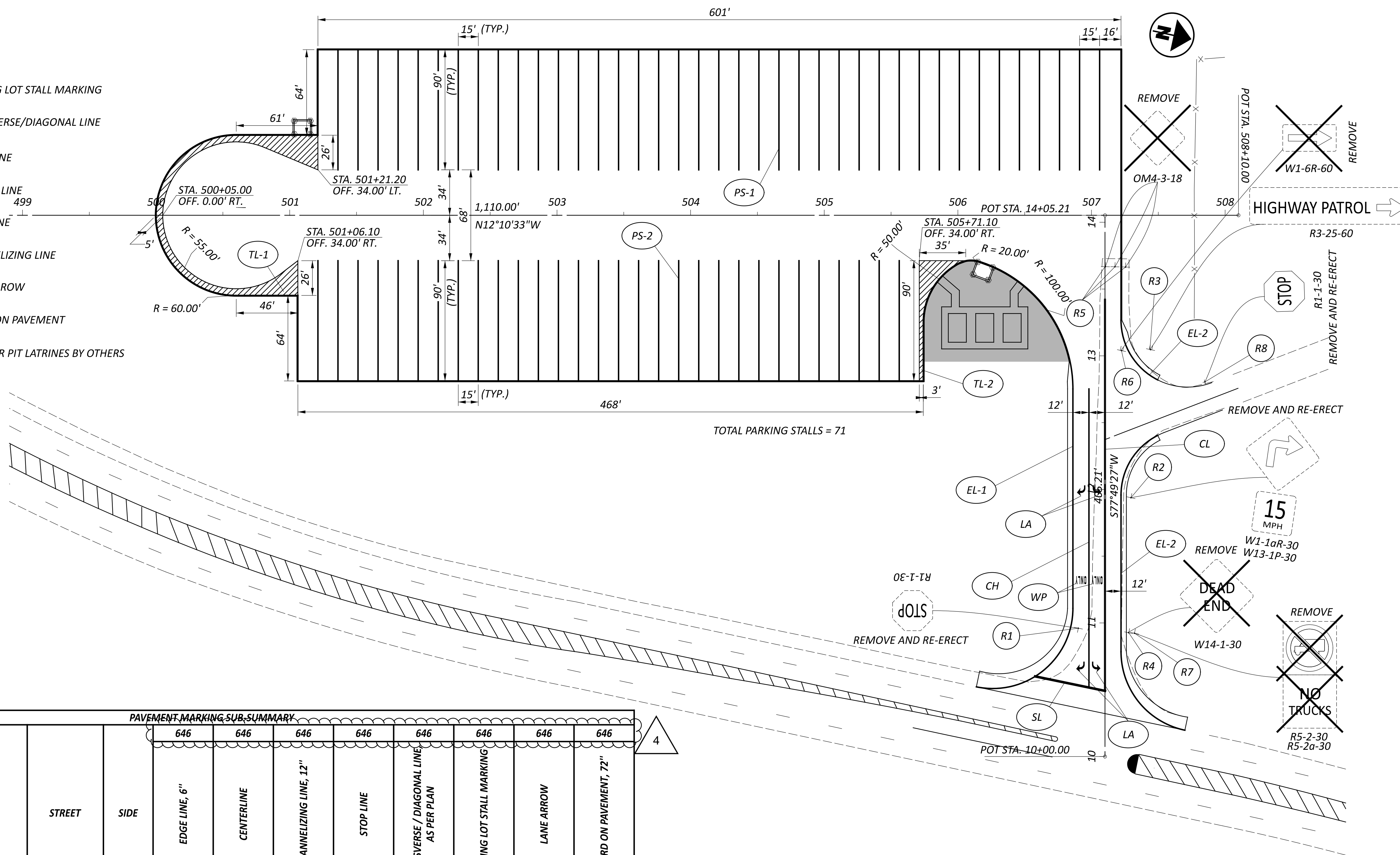
4

PAVEMENT SUBSUMMARY

DESIGN AGENCY

 DESIGNER
 AM
 REVIEWER
 MAH 01/12/26
 PROJECT ID
 122886
 SHEET TOTAL
 P.18 46

LEGEND

- PS ITEM 644 - PARKING LOT STALL MARKING
- TL ITEM 644 - TRANSVERSE/DIAGONAL LINE
- EL ITEM 644 - EDGE LINE
- CL ITEM 644 - CENTER LINE
- SL ITEM 644 - STOP LINE
- CH ITEM 644 - CHANNELIZING LINE
- LA ITEM 644 - LANE ARROW
- WP ITEM 644 - WORD ON PAVEMENT
- AREA RESERVED FOR PIT LATRINES BY OTHERS



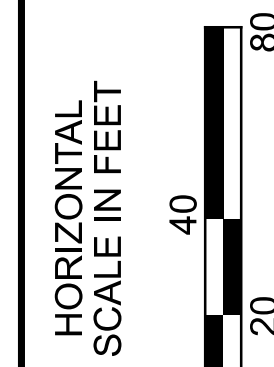
PAVEMENT MARKING SUB-SUMMARY

SHEET NO.	REFERENCE	STATION		STREET	SIDE	ITEM 646							
		FROM	TO			EDGE LINE, 6"	CENTERLINE	CHANNELIZING LINE, 12"	STOP LINE	TRANSVERSE / DIAGONAL LINE AS PER PLAN	PARKING LOT STALL MARKING	LANE ARROW	WORD ON PAVEMENT, 72"
						MILE	MILE	FT	FT	FT	FT	EACH	EACH
P.33	LA	10+63	12+03	OVERBRIDGE RD	RT/LT							4	
P.33	WP	11+29	11+35	OVERBRIDGE RD	RT/LT								2
P.33	PS-1	501+36	507+06	PARKING LOT	LT						3510		
P.33	PS-2	501+21	505+56	PARKING LOT	RT						2700		
P.33	EL-1	10+52	12+96	OVERBRIDGE RD	LT	0.06							
P.33	EL-2	10+19	13+27	OVERBRIDGE RD	RT	0.06							
P.33	SL	10+60	10+49	OVERBRIDGE RD	LT				53				
P.33	CH	10+52	12+75	OVERBRIDGE RD	LT			224					
P.33	CL	10+49	13+43	OVERBRIDGE RD	RT/LT		0.06						
P.33	TL-1	500+00	501+21	PARKING LOT	RT/LT					1419			
P.33	TL-2	505+71	506+06	PARKING LOT	RT					491			
TOTALS CARRIED TO GENERAL SUMMARY						0.12	0.06	224	53	1910	6210	4	2

4

ITEM 646 - TRANSVERSE/DIAGONAL LINE, AS PER PLAN

TRANSVERSE/DIAGONAL LINE PAVEMENT MARKINGS SHALL CONFORM TO ALL APPLICABLE SPECIFICATIONS IN C&MS 646 AND SHALL HAVE A WIDTH OF 4 INCHES.



PAVEMENT MARKING PLAN

DESIGN AGENCY	
DESIGNER	AM
REVIEWER	MAH 01/12/26
PROJECT ID	122886
SHEET TOTAL	P.33 46