

O.D.O.T. DISTRICT 2 SURVEY OFFICE (USE ONLY)

PERSONNEL

REFERENCE NO. 1

SHEET 1 OF 17

NOTES HOMAN

DATE 6/21/04

ROUTE SR 510

H.C. HOMAN

WEATHER SUNNY

COUNTY SANDUSKY

R.C. ADKINS

TEMP. 65°

TOWNSHIP GREEN CREEK

SECTION 14

DWG BY \_\_\_\_\_ PID \_\_\_\_\_

T 4 N R 16 E

TYPE MONUMENT IPIN

ON SURFACE - ~~BELOW~~ ON

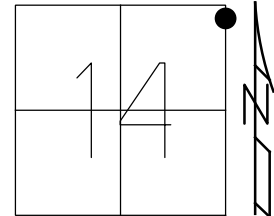
OFFSET CL PAVEMENT ON LT : RT

- TO - EDGE PAVEMENT

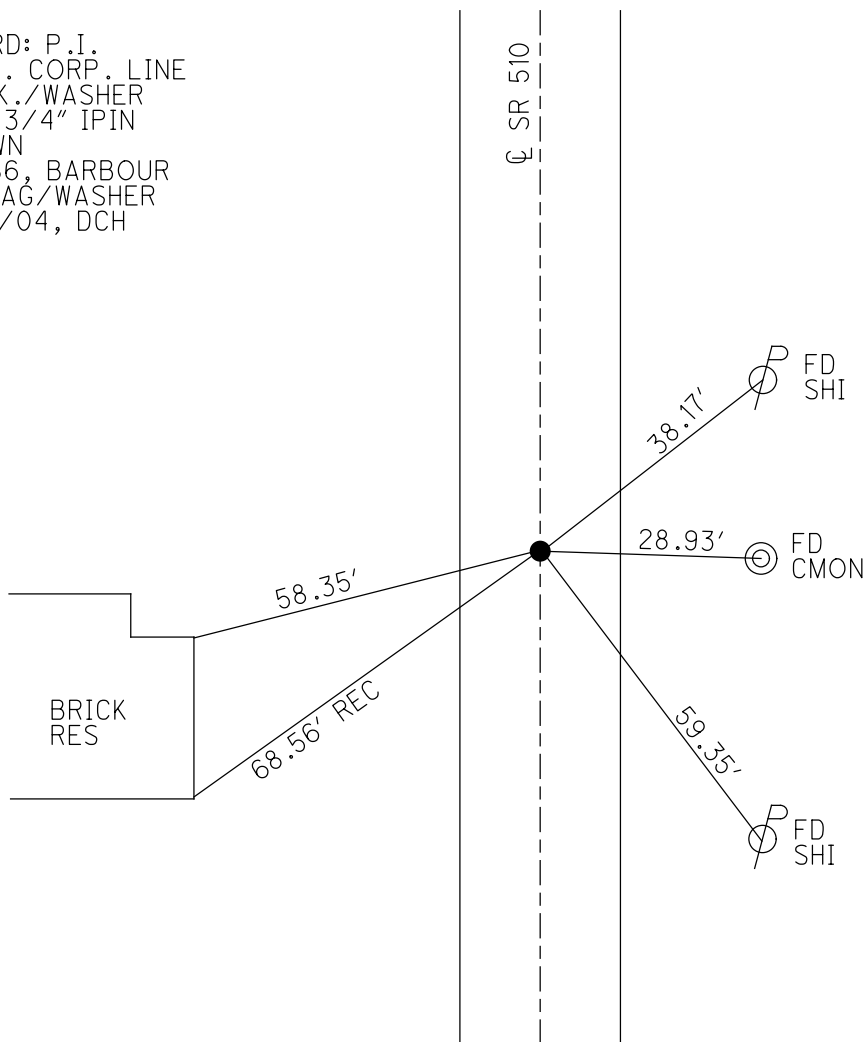
STATION: 26+73

HORIZ.DATUM: \_\_\_\_\_ GEOID: \_\_\_\_\_

GRID: NORTHING: \_\_\_\_\_ EASTING: \_\_\_\_\_



RECORD: P.I.  
OLD N. CORP. LINE  
FD P.K./WASHER  
ATOP 3/4" IPIN  
1" DOWN  
6/4/86, BARBOUR  
SET MAG/WASHER  
10/08/04, DCH



O.D.O.T. DISTRICT 2 SURVEY OFFICE (USE ONLY)

PERSONNEL

REFERENCE NO. 2

SHEET 2 OF 17

NOTES HOMAN

DATE 6/21/04

ROUTE SR 510

H.C. HOMAN

WEATHER SUNNY

COUNTY SANDUSKY

R.C. ADKINS

TEMP. 65°

TOWNSHIP GREEN CREEK

SECTION 11

DWG BY \_\_\_\_\_ PID \_\_\_\_\_

T 4 N R 16 E

TYPE MONUMENT P.K./WASHER

ON SURFACE - ~~BELOW~~ ON \_\_\_\_\_

OFFSET Q PAVEMENT 1' ~~LT~~ : RT

- TO - EDGE PAVEMENT

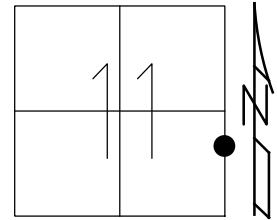
STATION: 40+35

HORZ.DATUM: \_\_\_\_\_

GEOID: \_\_\_\_\_

GRID: NORTHING: \_\_\_\_\_

EASTING: \_\_\_\_\_



RECORD:

FD R.R.SPIKE

1971

SET MAG/WASHER

10/08/04, DCH

CUT NOTCH  
STEEL BEAM  
1.5' UP  
"WELCOME TO CLYDE"



24.66'

32.81'

62.87'

SET  
SHI

FD  
SHI

O.D.O.T. DISTRICT 2 SURVEY OFFICE (USE ONLY)

PERSONNEL

REFERENCE NO. 3

SHEET 3 OF 17

NOTES GARRETT

DATE 7/23/20

ROUTE SR 510

H.C. RHOADES

WEATHER CLOUDY

COUNTY SANDUSKY

R.C. MAHLER

TEMP. 77°

TOWNSHIP GREEN CREEK

SECTION 11

DWG BY RHOADES

PID PAVE TRAIN

T 4 N R 16 E

TYPE MONUMENT MAG NAIL

ON SURFACE - ~~BELOW~~ ON

OFFSET CL PAVEMENT 4' ~~LT~~ : RT

5.6' TO RT EDGE PAVEMENT

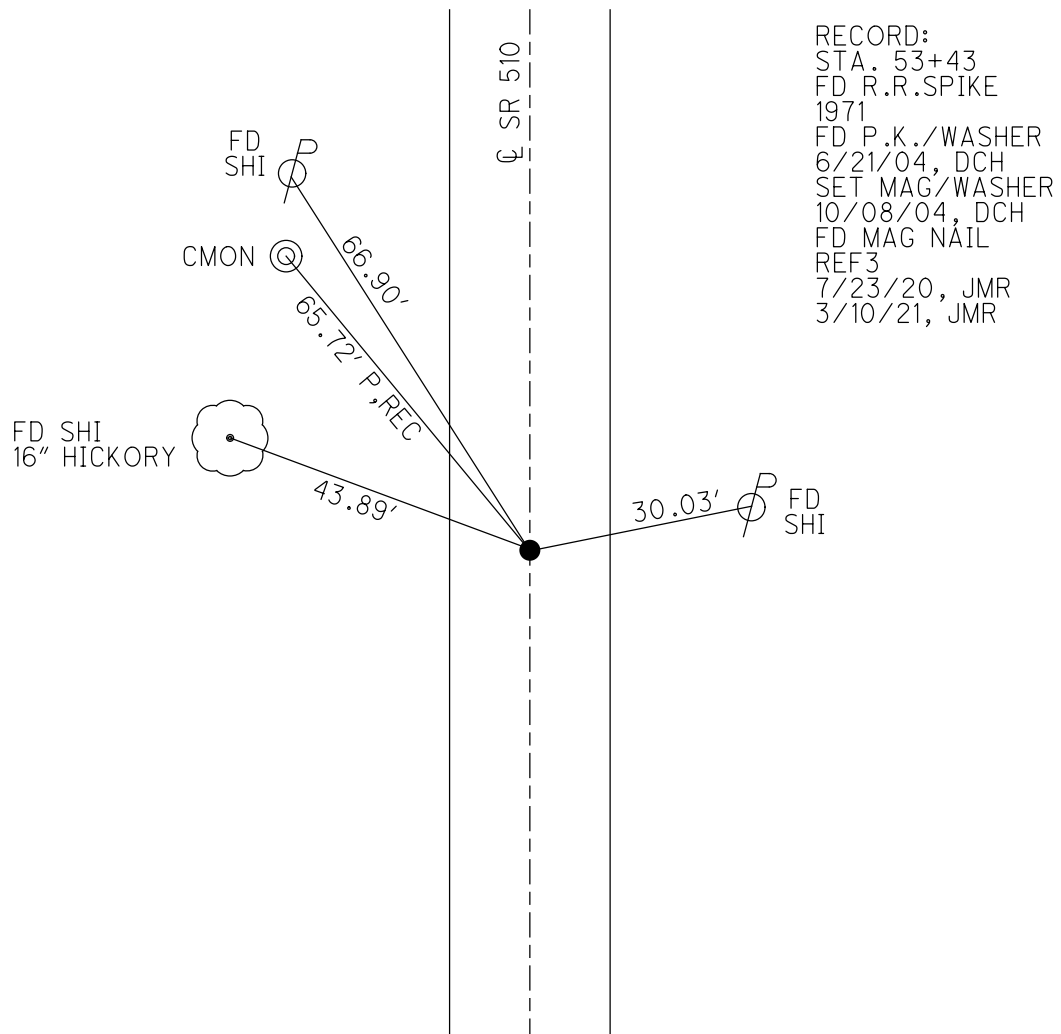
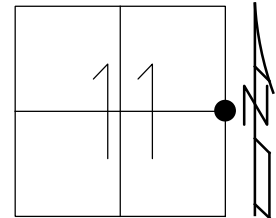
STATION: 53+48

HORZ.DATUM: NAD83 2011

GEOID: NAVD88 2012A

GRID: NORTHING: 603241.766

EASTING: 1838088.871



O.D.O.T. DISTRICT 2 SURVEY OFFICE (USE ONLY)

PERSONNEL

REFERENCE NO. 4

SHEET 4 OF 17

NOTES GARRETT

DATE 7/23/20

ROUTE SR 510

H.C. RHOADES

WEATHER CLOUDY

COUNTY SANDUSKY

R.C. MAHLER

TEMP. 77°

TOWNSHIP GREEN CREEK

SECTION 11

DWG BY RHOADES

PID PAVE TRAIN

T 4 N R 16 E

TYPE MONUMENT MAG NAIL

ON SURFACE - ~~BELOW~~ ON

OFFSET Q PAVEMENT 1' LT : ~~RT~~

- TO - EDGE PAVEMENT

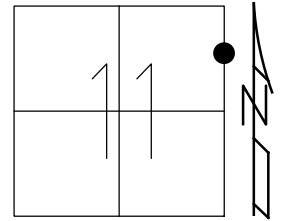
STATION: 71+77

HORZ.DATUM: NAD83 2011

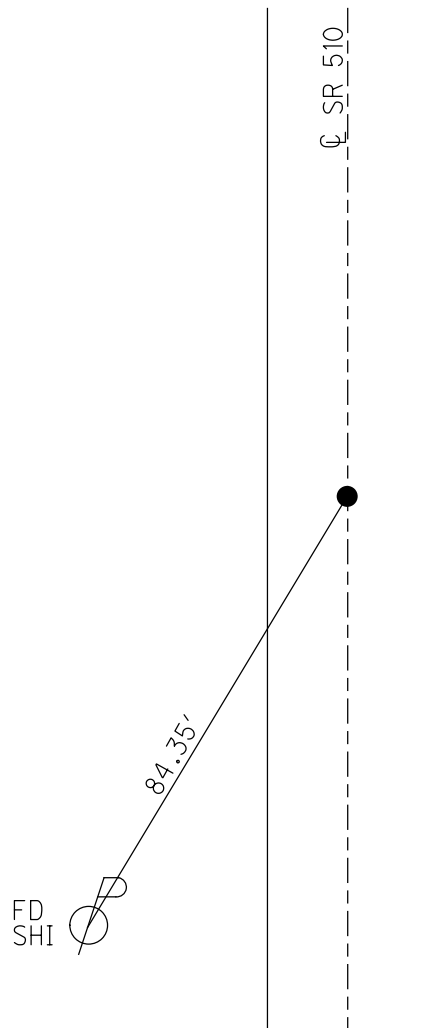
GEOID: NAVD88 2012A

GRID: NORTHING: 605045.955

EASTING: 1838094.646



RECORD:  
STA. 71+42.57  
FD R.R. SPIKE  
2" DOWN  
1971  
FD P.K./WASHER  
6/21/04, DCH  
SET MAG/WASHER  
10/08/04, DCH  
FD MAG NAIL  
REF4  
7/23/20, JMR  
3/10/21, JMR



O.D.O.T. DISTRICT 2 SURVEY OFFICE (USE ONLY)

PERSONNEL

REFERENCE NO. 5

SHEET 5 OF 17

NOTES GARRETT

DATE 7/23/20

ROUTE SR 510

H.C. RHOADES

WEATHER CLOUDY

COUNTY SANDUSKY

R.C. MAHLER

TEMP. 77°

TOWNSHIP GREEN CREEK

SECTION 2

DWG BY RHOADES PID PAVE TRAIN

T 4 N R 16 E

TYPE MONUMENT MAG NAIL

ON SURFACE - ~~BELOW~~ ON

OFFSET CL PAVEMENT 2.5' ~~LT~~ : RT

- TO - EDGE PAVEMENT

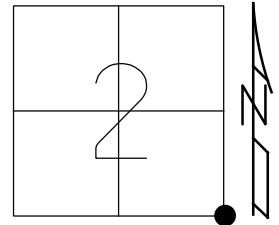
STATION: 80+24

HORIZ.DATUM: NAD83 2011

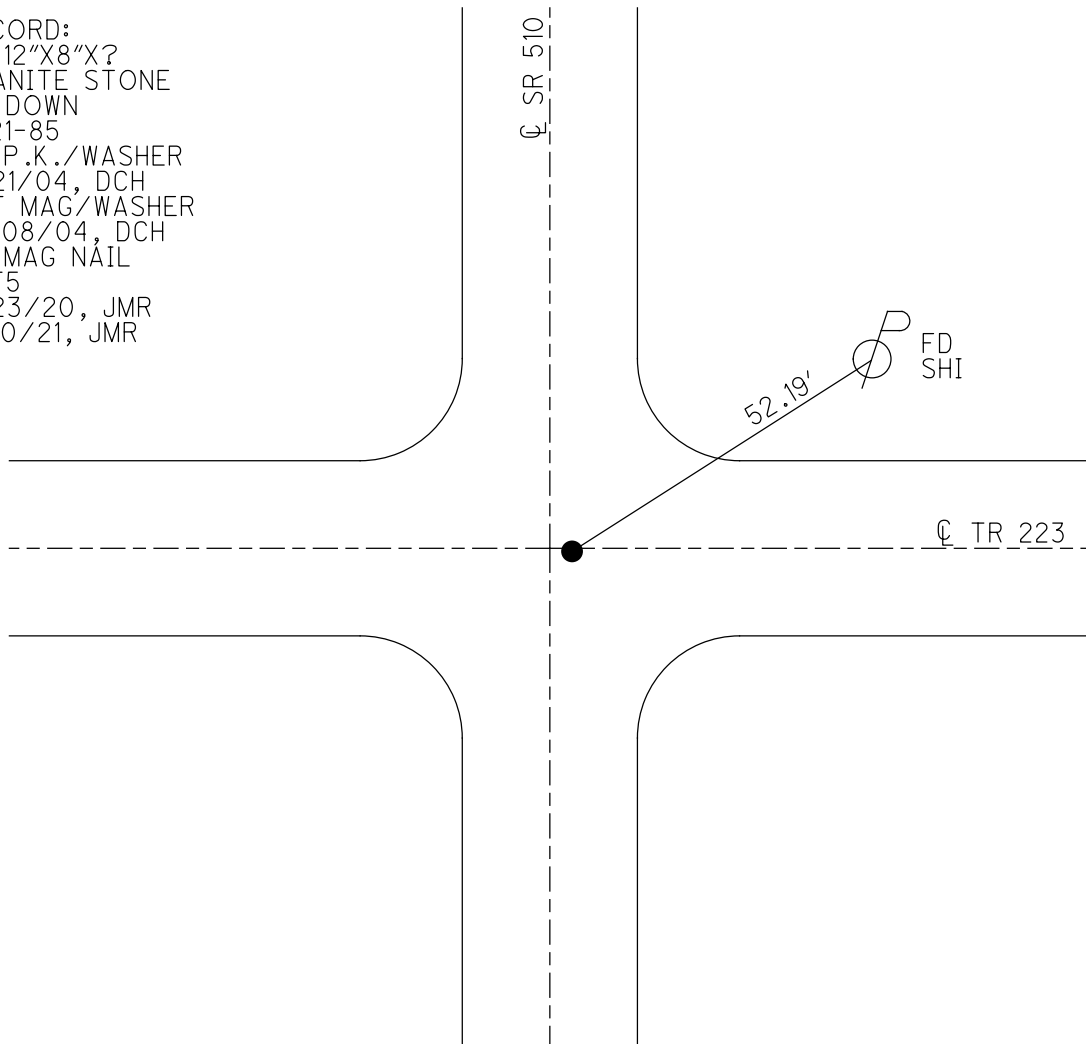
GEOID: NAVD88 2012A

GRID: NORTHING: 605889.595

EASTING: 1838109.472



RECORD:  
FD 12"X8"X?  
GRANITE STONE  
21" DOWN  
5-21-85  
FD P.K./WASHER  
6/21/04, DCH  
SET MAG/WASHER  
10/08/04, DCH  
FD MAG NAIL  
REF5  
7/23/20, JMR  
3/10/21, JMR



O.D.O.T. DISTRICT 2 SURVEY OFFICE (USE ONLY)

PERSONNEL

REFERENCE NO. 6

SHEET 6 OF 17

NOTES GARRETT

DATE 7/23/20

ROUTE SR 510

H.C. RHOADES

WEATHER CLOUDY

COUNTY SANDUSKY

R.C. MAHLER

TEMP. 77°

TOWNSHIP GREEN CREEK

SECTION 2

DWG BY RHOADES

PID PAVE TRAIN

T 4 N R 16 E

TYPE MONUMENT MAG SHANK

ON SURFACE - ~~BELOW~~ ON

OFFSET Q PAVEMENT ON LT : RT

- TO - EDGE PAVEMENT

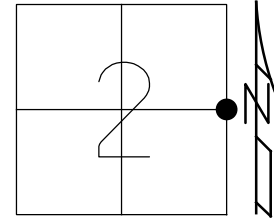
STATION: 106+69

HORIZ.DATUM: NAD83 2011

GEOID: NAVD88 2012A

GRID: NORTHING: 608531.215

EASTING: 1838136.256



RECORD:

STA. 106+34

FD P.K./WASHER

ATOP BOLT SPIKE

ATOP STONE

1971

FD P.K./WASHER

6/21/04, DCH

SET MAG/WASHER

9/03/04, DCH

FD MAG SHANK

REF6

7/23/20, JMR

3/10/21, JMR

FD  
SHI

55.26'

Q SR 510



O.D.O.T. DISTRICT 2 SURVEY OFFICE (USE ONLY)

PERSONNEL

REFERENCE NO. 7

SHEET 7 OF 17

NOTES GARRETT

DATE 7/23/20

ROUTE SR 510

H.C. RHOADES

WEATHER CLOUDY

COUNTY SANDUSKY

R.C. MAHLER

TEMP. 77°

TOWNSHIP GREEN CREEK

SECTION 2

DWG BY RHOADES

PID PAVE TRAIN

T 4 N R 16 E

TYPE MONUMENT MONBOX

ON SURFACE - ~~BELOW~~ ON

OFFSET CL PAVEMENT 35' LT : ~~RT~~

- TO - EDGE PAVEMENT

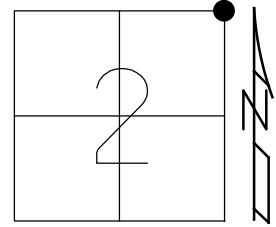
STATION: 132+52

HORZ.DATUM: NAD83 2011

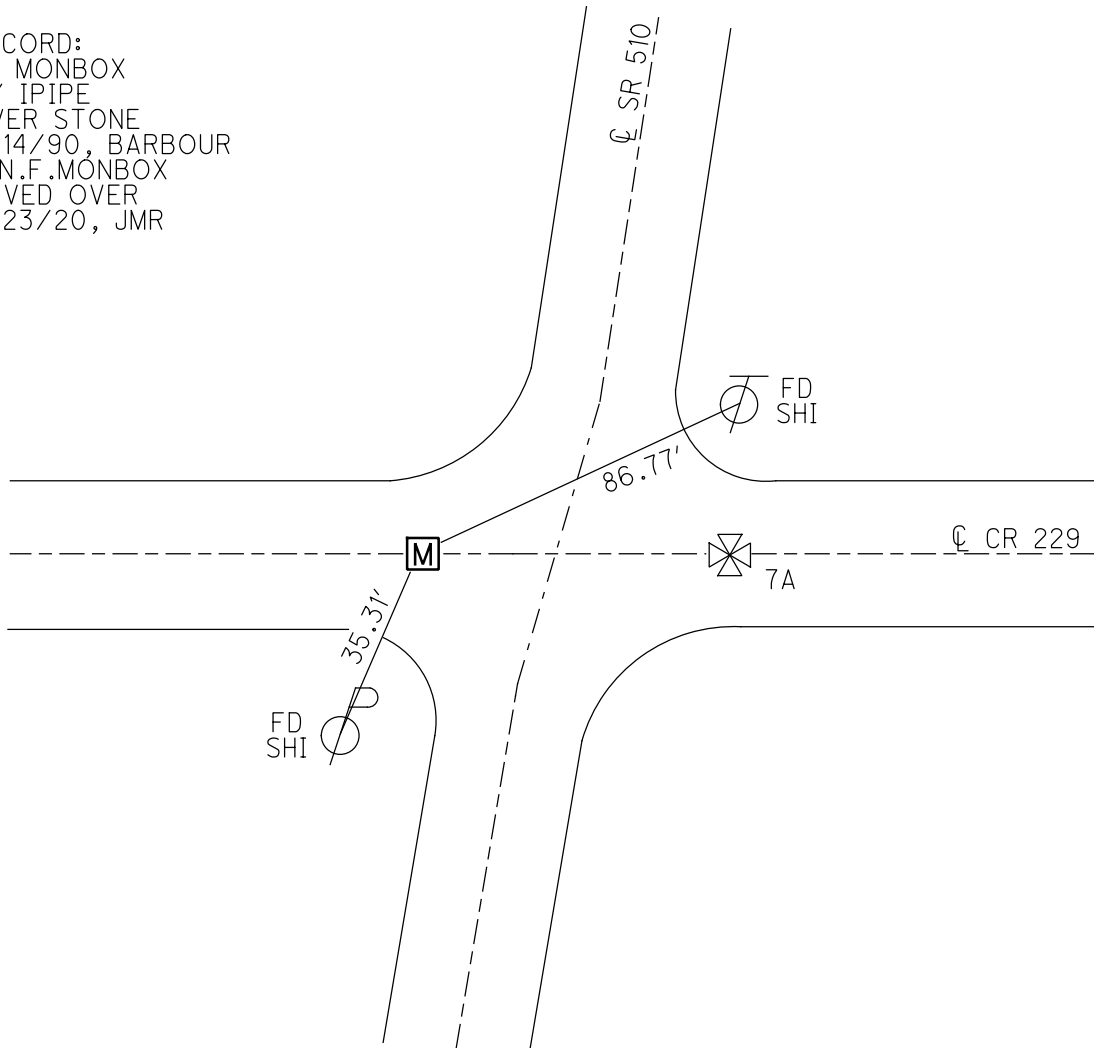
GEOID: NAVD88 2012A

GRID: NORTHING:                     

EASTING:                     



RECORD:  
FD MONBOX  
W/ IPIPE  
OVER STONE  
8/14/90, BARBOUR  
D.N.F. MONBOX  
PAVED OVER  
7/23/20, JMR



O.D.O.T. DISTRICT 2 SURVEY OFFICE (USE ONLY)

PERSONNEL

REFERENCE NO. 7 A

SHEET 8 OF 17

NOTES GARRETT

DATE 7/23/20

ROUTE SR 510

H.C. RHOADES

WEATHER CLOUDY

COUNTY SANDUSKY

R.C. MAHLER

TEMP. 77°

TOWNSHIP RILEY

SECTION 35

DWG BY RHOADES

PID PAVE TRAIN

T 5 N R 16 E

TYPE MONUMENT 3/4" IPIN OVER STONE

ON SURFACE - ~~BELOW~~ ON

OFFSET Q PAVEMENT 50' ~~LT~~ : RT

- TO - EDGE PAVEMENT

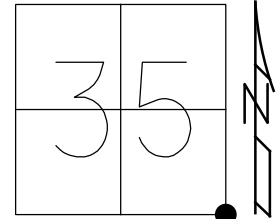
STATION: 132+52

HORZ.DATUM: NAD83 2011

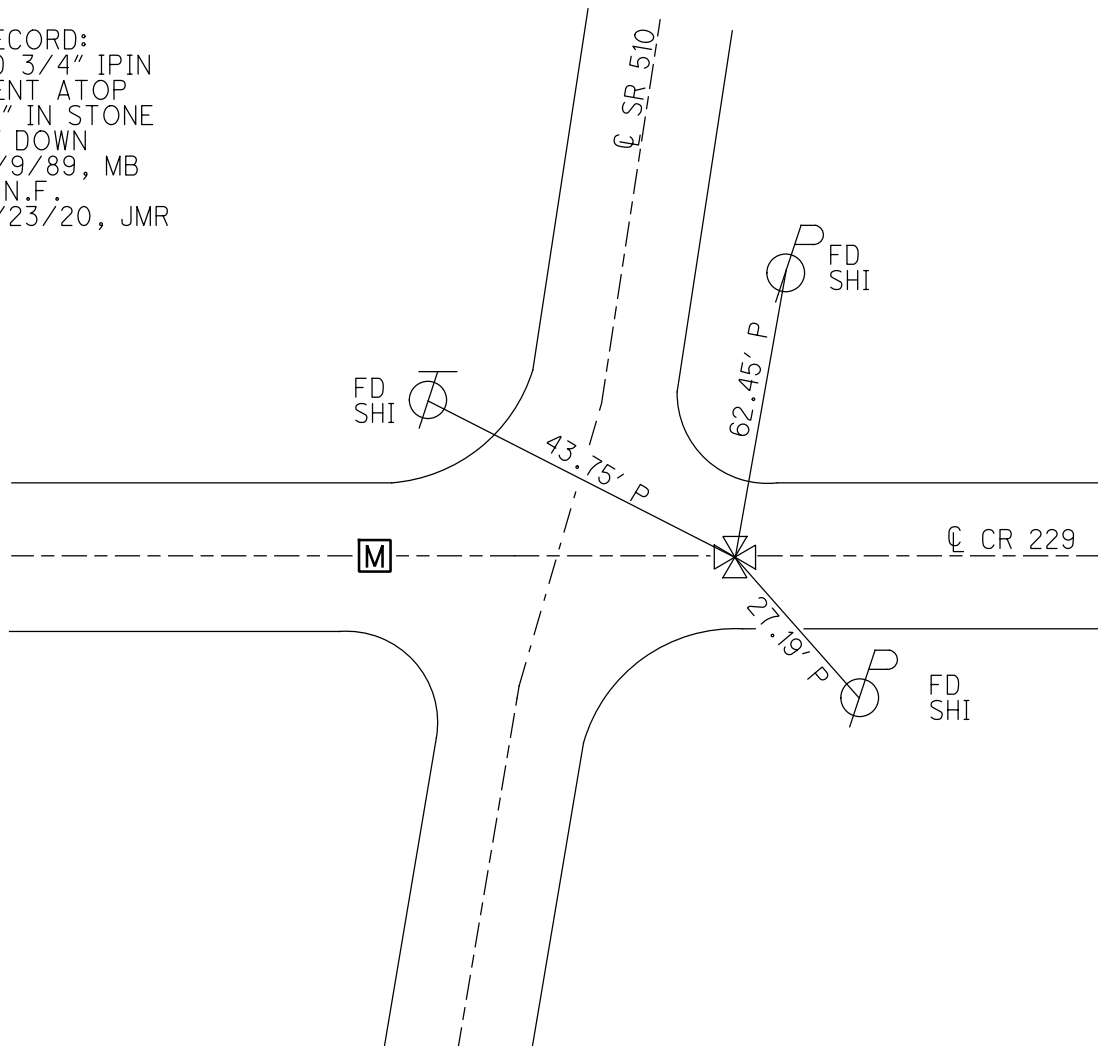
GEOID: NAVD88 2012A

GRID: NORTHING: \_\_\_\_\_

EASTING: \_\_\_\_\_



RECORD:  
FD 3/4" IPIN  
BENT ATOP  
"X" IN STONE  
9" DOWN  
11/9/89, MB  
D.N.F.  
7/23/20, JMR



O.D.O.T. DISTRICT 2 SURVEY OFFICE (USE ONLY)

PERSONNEL

REFERENCE NO. 8

SHEET 9 OF 17

NOTES GARRETT

DATE 7/23/20

ROUTE SR 510

H.C. RHOADES

WEATHER CLOUDY

COUNTY SANDUSKY

R.C. MAHLER

TEMP. 77°

TOWNSHIP RILEY

SECTION 35

DWG BY RHOADES

PID PAVE TRAIN

T 5 N R 16 E

TYPE MONUMENT MAG/WASHER

ON SURFACE - ~~BELOW~~ ON

OFFSET CL PAVEMENT 4.3' ~~LT~~ : RT

- TO - EDGE PAVEMENT

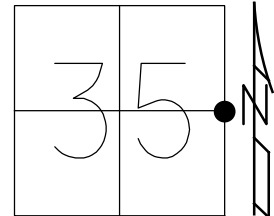
STATION: 159+50

HORIZ.DATUM: NAD83 2011

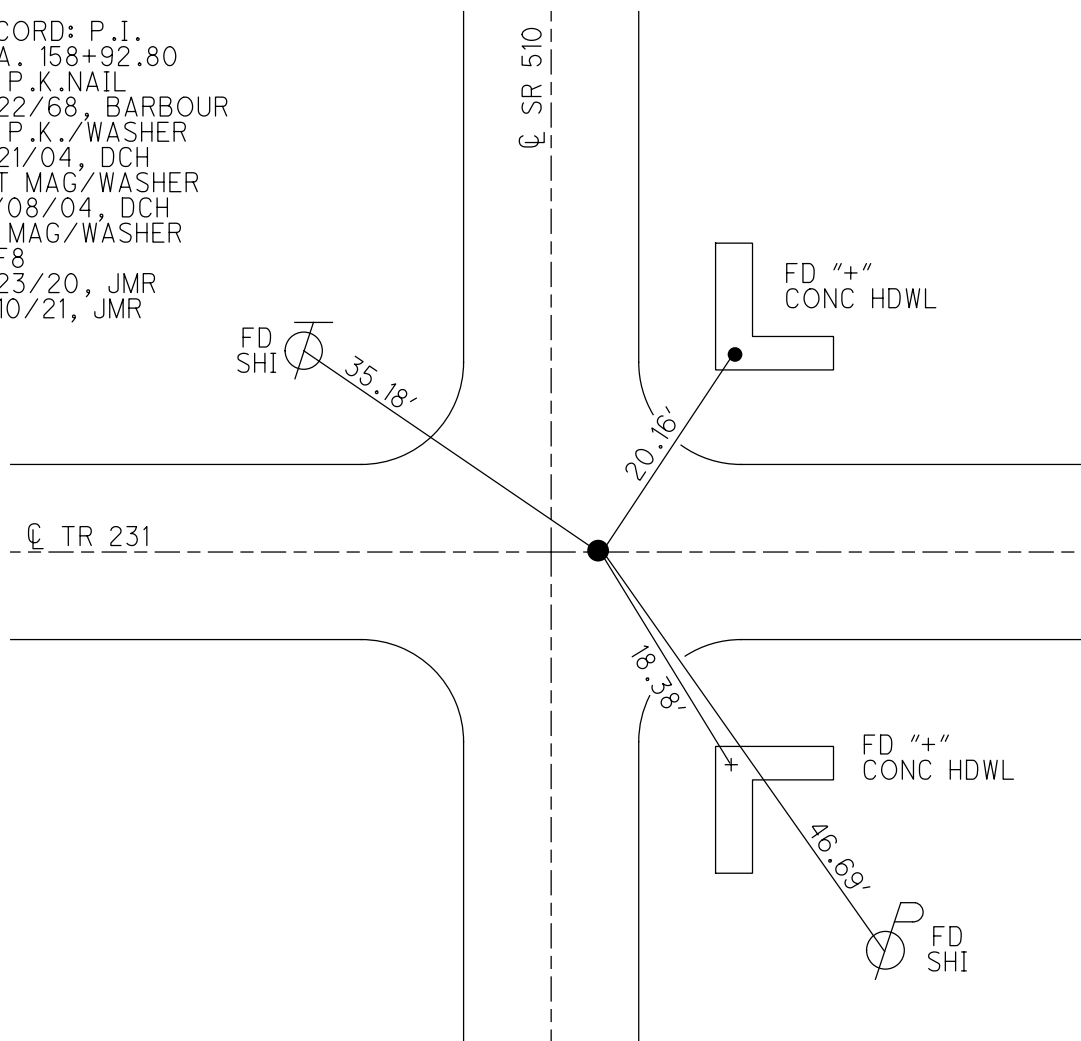
GEOID: NAVD88 2012A

GRID: NORTHING: 613783.993

EASTING: 1838329.599



RECORD: P.I.  
STA. 158+92.80  
FD P.K.NAIL  
4/22/68, BARBOUR  
FD P.K./WASHER  
6/21/04, DCH  
SET MAG/WASHER  
10/08/04, DCH  
FD MAG/WASHER  
REF8  
7/23/20, JMR  
3/10/21, JMR



O.D.O.T. DISTRICT 2 SURVEY OFFICE (USE ONLY)

PERSONNEL

REFERENCE NO. 9

SHEET 10 OF 17

NOTES GARRETT

DATE 7/23/20

ROUTE SR 510

H.C. RHOADES

WEATHER CLOUDY

COUNTY SANDUSKY

R.C. ADKINS

TEMP. 77°

TOWNSHIP RILEY

SECTION 35

DWG BY RHOADES

PID PAVE TRAIN

T 5 N R 16 E

TYPE MONUMENT MAG SHANK

ON SURFACE - ~~BELOW~~ ON

OFFSET CL PAVEMENT ON LT : RT

- TO - EDGE PAVEMENT

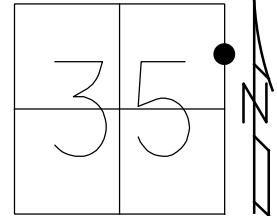
STATION: 172+74

HORZ.DATUM: NAD83 2011

GEOID: NAVD88 2012A

GRID: NORTHING: 615102.861

EASTING: 1838359.903



RECORD:

STA 172+12.50

FD P.K./WASHER

1 1/2" DOWN

SET SM.SPIKE

1971

FD P.K./WASHER

6/21/04, DCH

SET MAG/WASHER

10/08/04, DCH

FD MAG SHANK

REF9

7/23/20, JMR

3/10/21, JMR

FD  
SHI



59.01'

CL SR 510



FD  
SHI

68.16'

O.D.O.T. DISTRICT 2 SURVEY OFFICE (USE ONLY)

PERSONNEL

REFERENCE NO. 10

SHEET 11 OF 17

NOTES GARRETT

DATE 7/23/20

ROUTE SR 510

H.C. RHOADES

WEATHER CLOUDY

COUNTY SANDUSKY

R.C. MAHLER

TEMP. 77°

TOWNSHIP RILEY

SECTION 26

DWG BY RHOADES

PID PAVE TRAIN

T 5 N R 16 E

TYPE MONUMENT MAG SHANK

ON SURFACE - ~~BELOW~~ ON

OFFSET Q PAVEMENT ON LT : RT

- TO - EDGE PAVEMENT

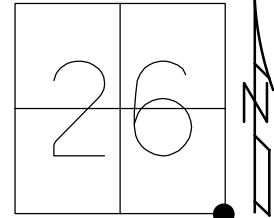
STATION: 185+95

HORIZ.DATUM: NAD83 2011

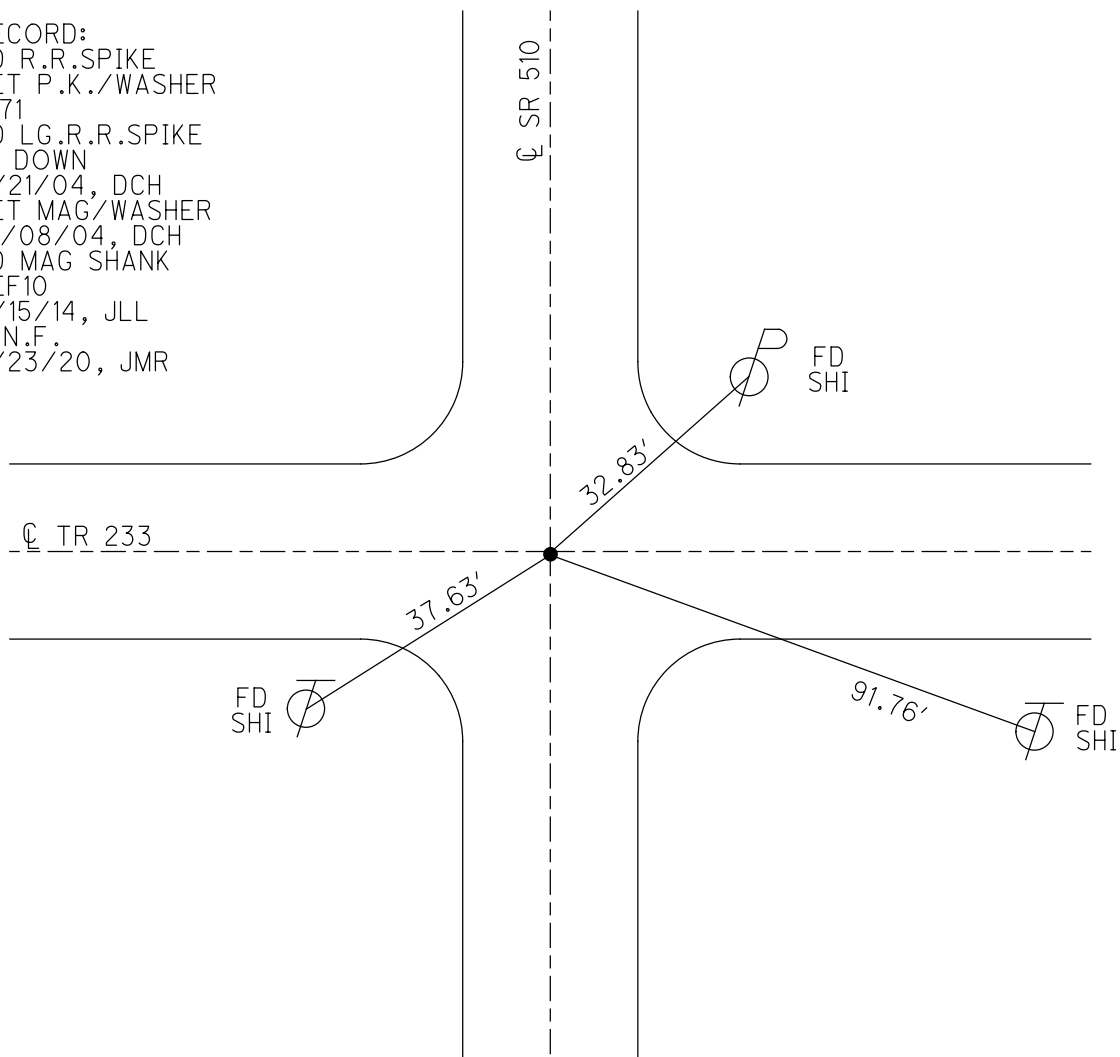
GEOID: NAVD88 2012A

GRID: NORTHING: 616423.180

EASTING: 1838390.574



RECORD:  
FD R.R.SPIKE  
SET P.K./WASHER  
1971  
FD LG.R.R.SPIKE  
3" DOWN  
6/21/04, DCH  
SET MAG/WASHER  
10/08/04, DCH  
FD MAG SHANK  
REF10  
9/15/14, JLL  
D.N.F.  
7/23/20, JMR



O.D.O.T. DISTRICT 2 SURVEY OFFICE (USE ONLY)

PERSONNEL

REFERENCE NO. 11

SHEET 12 OF 17

NOTES GARRETT

DATE 7/23/20

ROUTE SR 510

H.C. RHOADES

WEATHER CLOUDY

COUNTY SANDUSKY

R.C. MAHLER

TEMP. 77°

TOWNSHIP RILEY

SECTION 26

DWG BY RHOADES

PID PAVE TRAIN

T 5 N R 16 E

TYPE MONUMENT MAG SHANK

ON SURFACE - ~~BELOW~~ ON

OFFSET Q PAVEMENT 1.5' ~~LT~~ : RT

7.8' TO RT EDGE PAVEMENT

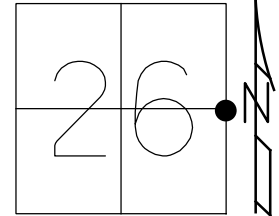
STATION: 212+53

HORZ.DATUM: NAD83 2011

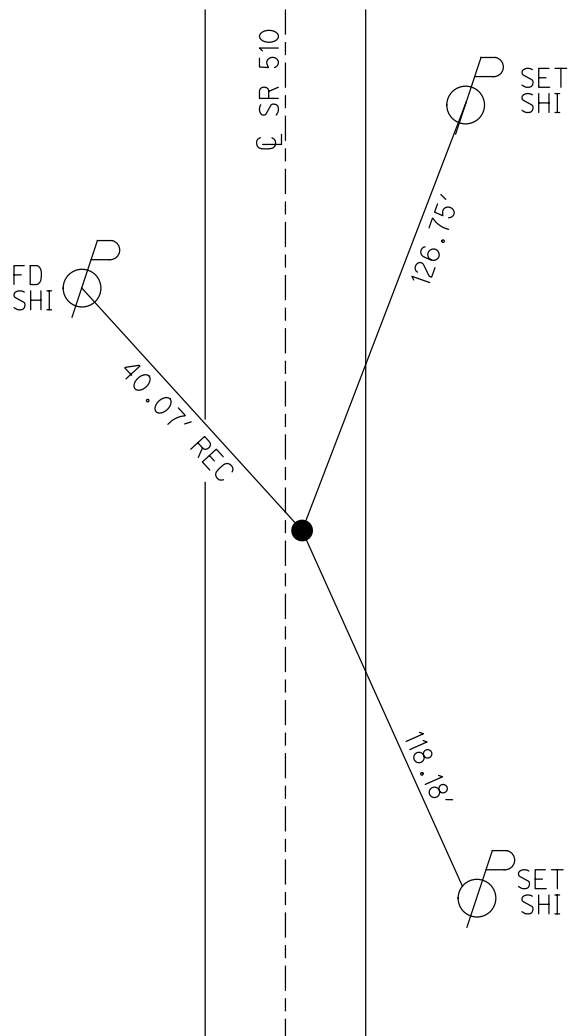
GEOID: NAVD88 2012A

GRID: NORTHING: 619074.015

EASTING: 1838443.626



RECORD:  
STA. 211+98  
FD R.R.SPIKE  
1 1/2" DOWN  
SET SM.SPIKE  
1971  
FD P.K./WASHER  
6/30/04, DCH  
SET MAG/WASHER  
9/03/04, DCH  
FD MAG SHANK  
REF11  
9/15/14, JLL  
D.N.F.  
7/23/20, JMR



O.D.O.T. DISTRICT 2 SURVEY OFFICE (USE ONLY)

PERSONNEL

REFERENCE NO. 12

SHEET 13 OF 17

NOTES GARRETT

DATE 7/23/20

ROUTE SR 510

H.C. RHOADES

WEATHER CLOUDY

COUNTY SANDUSKY

R.C. MAHLER

TEMP. 77°

TOWNSHIP RILEY

SECTION 26

DWG BY RHOADES

PID PAVE TRAIN

T 5 N R 16 E

TYPE MONUMENT MAG/WASHER

ON SURFACE - ~~BELOW~~ ON

OFFSET CL PAVEMENT 2.5' LT : RT

10.0' TO LT EDGE PAVEMENT

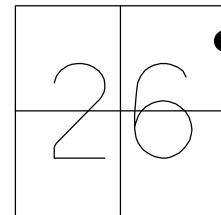
STATION: 227+81

HORIZ.DATUM: NAD83 2011

GEOID: NAVD88 2012A

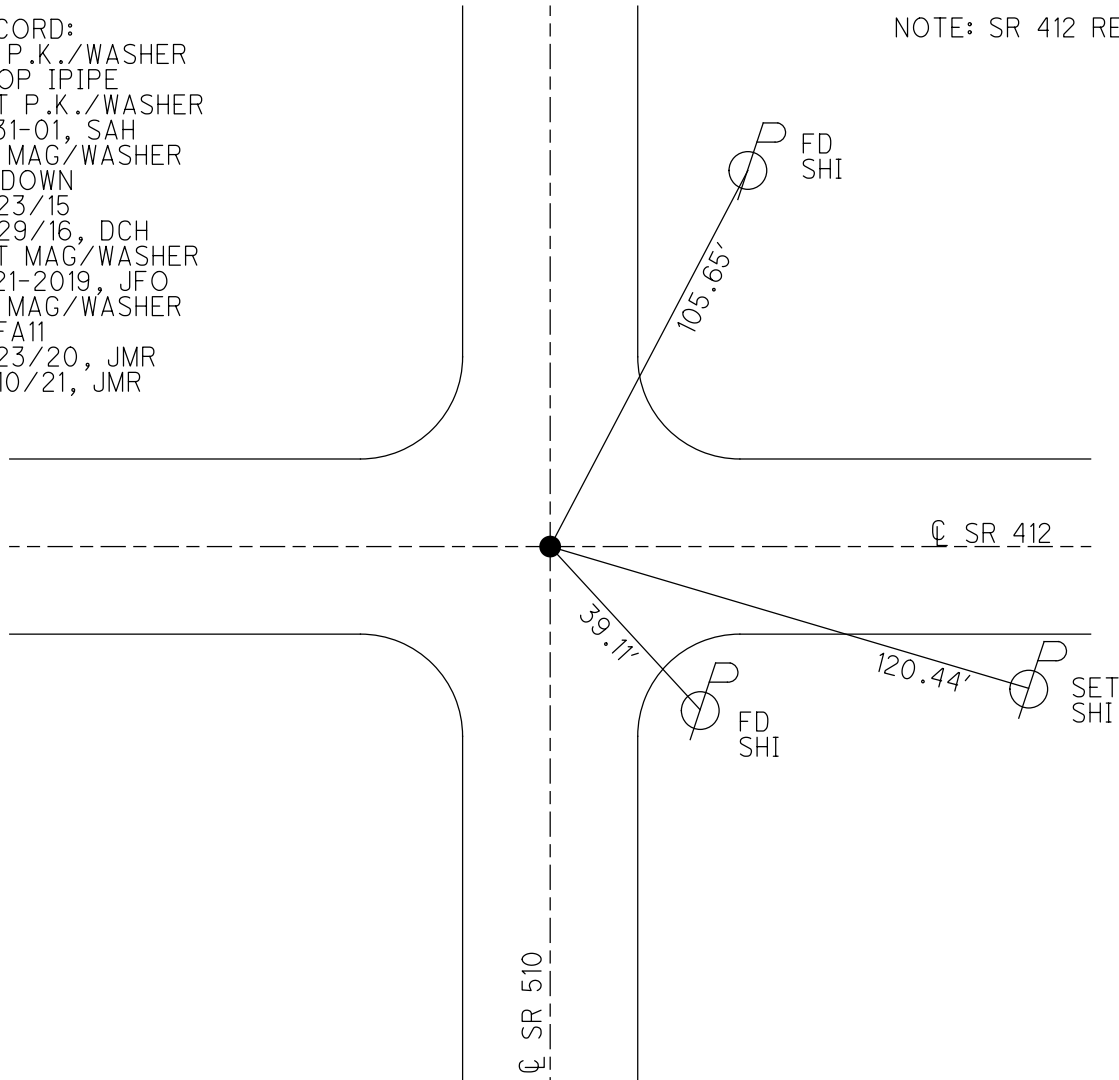
GRID: NORTHING: 620593.287

EASTING: 1838476.137



RECORD:  
FD P.K./WASHER  
ATOP IPIPE  
SET P.K./WASHER  
8-31-01, SAH  
FD MAG/WASHER  
2" DOWN  
6/23/15  
11/29/16, DCH  
SET MAG/WASHER  
8-21-2019, JFO  
FD MAG/WASHER  
REFA11  
7/23/20, JMR  
3/10/21, JMR

NOTE: SR 412 REF 11



O.D.O.T. DISTRICT 2 SURVEY OFFICE (USE ONLY)

PERSONNEL

REFERENCE NO. 13

SHEET 14 OF 17

NOTES GARRETT

DATE 7/23/20

ROUTE SR 510

H.C. RHOADES

WEATHER CLOUDY

COUNTY SANDUSKY

R.C. MAHLER

TEMP. 77°

TOWNSHIP RILEY

SECTION 23

DWG BY RHOADES

PID PAVE TRAIN

T 5 N R 16 E

TYPE MONUMENT P.K./WASHER

ON SURFACE - ~~BELOW~~ ON

OFFSET Q PAVEMENT 1' ~~LT~~ : RT

8.5' TO RT EDGE PAVEMENT

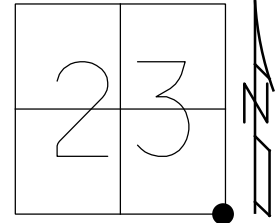
STATION: 240+13

HORIZ.DATUM: NAD83 2011

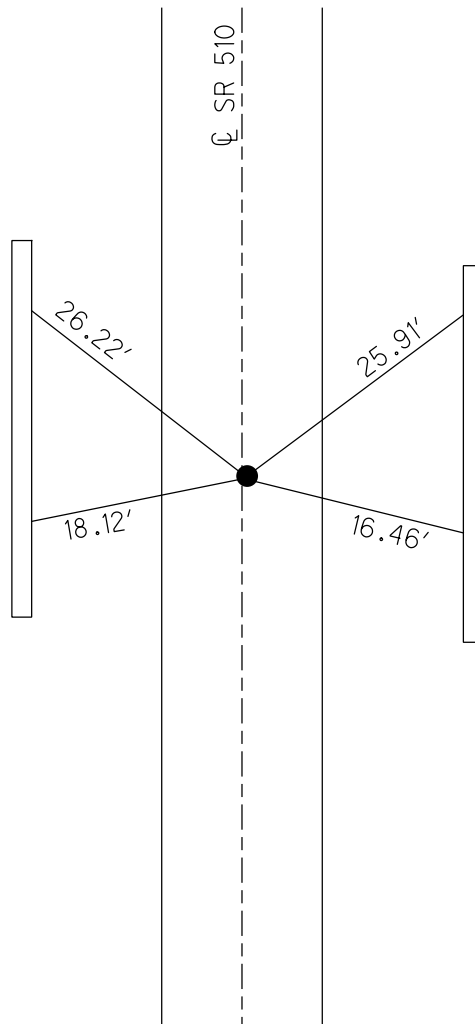
GEOID: NAVD88 2012A

GRID: NORTHING: \_\_\_\_\_

EASTING: \_\_\_\_\_



RECORD:  
FD BOLT  
1" DOWN  
SET SM.R.R.SPIKE  
1971  
FD P.K./WASHER  
6/30/04, DCH  
SET MAG NAIL  
10/08/04, DCH  
D.N.F.  
7/23/20, JMR



CUT "X"s ON  
BARRIER WALL  
UNDER TURNPIKE  
OPPOSITE PIERS

O.D.O.T. DISTRICT 2 SURVEY OFFICE (USE ONLY)

PERSONNEL

REFERENCE NO. 15

SHEET 15 OF 17

NOTES GARRETT

DATE 7/23/20

ROUTE SR 510

H.C. RHOADES

WEATHER CLOUDY

COUNTY SANDUSKY

R.C. MAHLER

TEMP. 77°

TOWNSHIP RILEY

SECTION 23

DWG BY RHOADES

PID PAVE TRAIN

T 5 N R 16 E

TYPE MONUMENT P.K./WASHER

ON SURFACE - ~~BELOW~~ ON

OFFSET Q PAVEMENT ON LT : RT

- TO - EDGE PAVEMENT

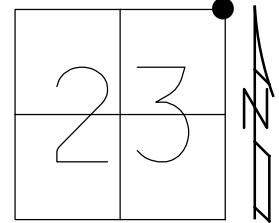
STATION: 292+10

HORZ.DATUM: NAD83 2011

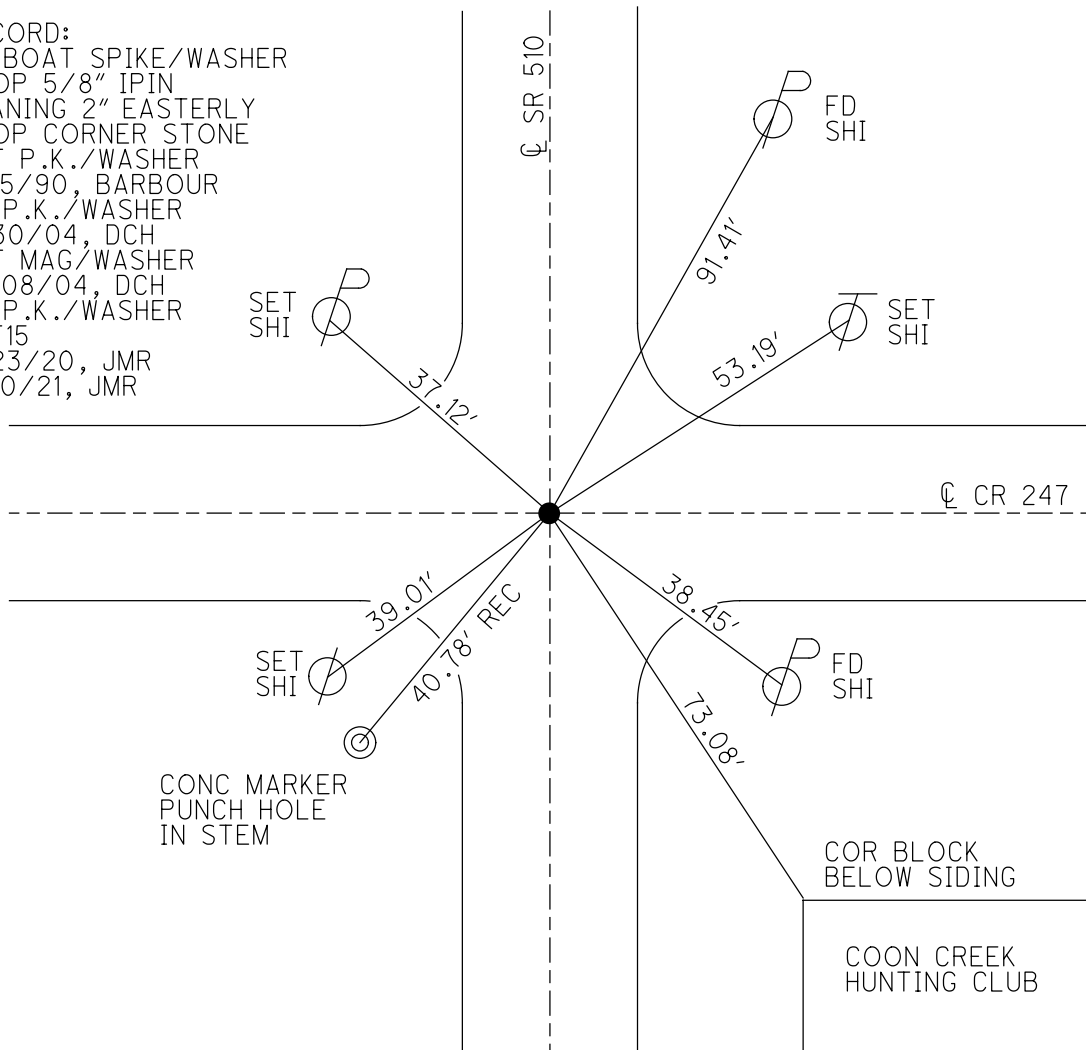
GEOID: NAVD88 2012A

GRID: NORTHING: 627012.138

EASTING: 1838592.850



RECORD:  
FD BOAT SPIKE/WASHER  
ATOP 5/8" IPIN  
LEANING 2" EASTERLY  
ATOP CORNER STONE  
SET P.K./WASHER  
8/15/90, BARBOUR  
FD P.K./WASHER  
6/30/04, DCH  
SET MAG/WASHER  
10/08/04, DCH  
FD P.K./WASHER  
REF15  
7/23/20, JMR  
3/10/21, JMR



O.D.O.T. DISTRICT 2 SURVEY OFFICE (USE ONLY)

PERSONNEL

REFERENCE NO. 15 A

SHEET 16 OF 17

NOTES GARRETT

DATE 7/23/20

ROUTE SR 510

H.C. RHOADES

WEATHER CLOUDY

COUNTY SANDUSKY

R.C. MAHLER

TEMP. 77°

TOWNSHIP RILEY

SECTION 14

DWG BY RHOADES

PID PAVE TRAIN

T 5 N R 16 E

TYPE MONUMENT P.K./WASHER

ON SURFACE - ~~BELOW~~ ON

OFFSET Q PAVEMENT 1.7' ~~LT~~ : RT

7' TO RT EDGE PAVEMENT

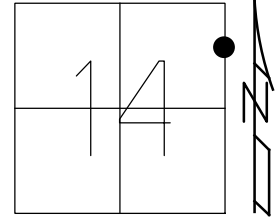
STATION: 331+82

HORZ.DATUM: NAD83 2011

GEOID: NAVD88 2012A

GRID: NORTHING: \_\_\_\_\_

EASTING: \_\_\_\_\_



RECORD:

STA 331+26.26

FD R.R.SPIKE

2" DOWN

SET P.K.NAIL

1971

FD P.K./WASHER

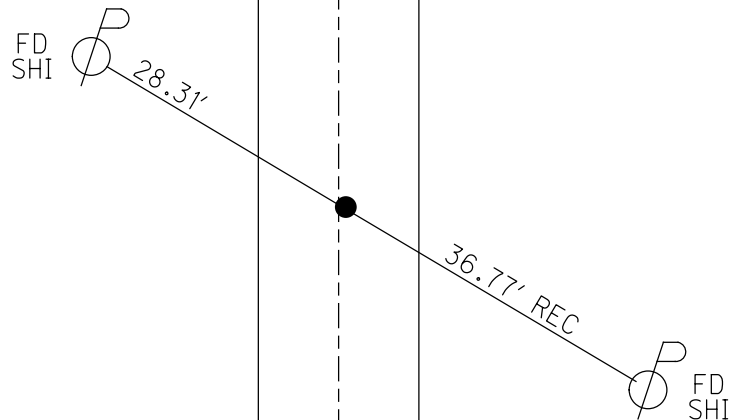
6/30/04, DCH

SET MAG/WASHER

9/03/04, DCH

D.N.F.

7/23/20, JMH



O.D.O.T. DISTRICT 2 SURVEY OFFICE (USE ONLY)

PERSONNEL

REFERENCE NO. 16

SHEET 17 OF 17

NOTES GARRETT

DATE 7/23/20

ROUTE SR 510

H.C. RHOADES

WEATHER CLOUDY

COUNTY SANDUSKY

R.C. MAHLER

TEMP. 77°

TOWNSHIP RILEY

SECTION 14

DWG BY RHOADES

PID PAVE TRAIN

T 5 N R 16 E

TYPE MONUMENT P.K./WASHER

ON SURFACE - ~~BELOW~~ ON

OFFSET Q PAVEMENT 2' LT : ~~RT~~

- TO - EDGE PAVEMENT

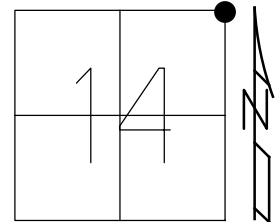
STATION: 345+20

HORZ.DATUM: NAD83 2011

GEOID: NAVD88 2012A

GRID: NORTHING: \_\_\_\_\_

EASTING: \_\_\_\_\_



RECORD:  
STA 334+62.63  
FD R.R.SPIKE  
1" DOWN  
SET P.K.NAIL  
1971  
FD P.K./WASHER  
6/30/04, DCH  
SET MAG/WASHER  
9/03/04, DCH  
D.N.F.  
7/23/20, JMR

