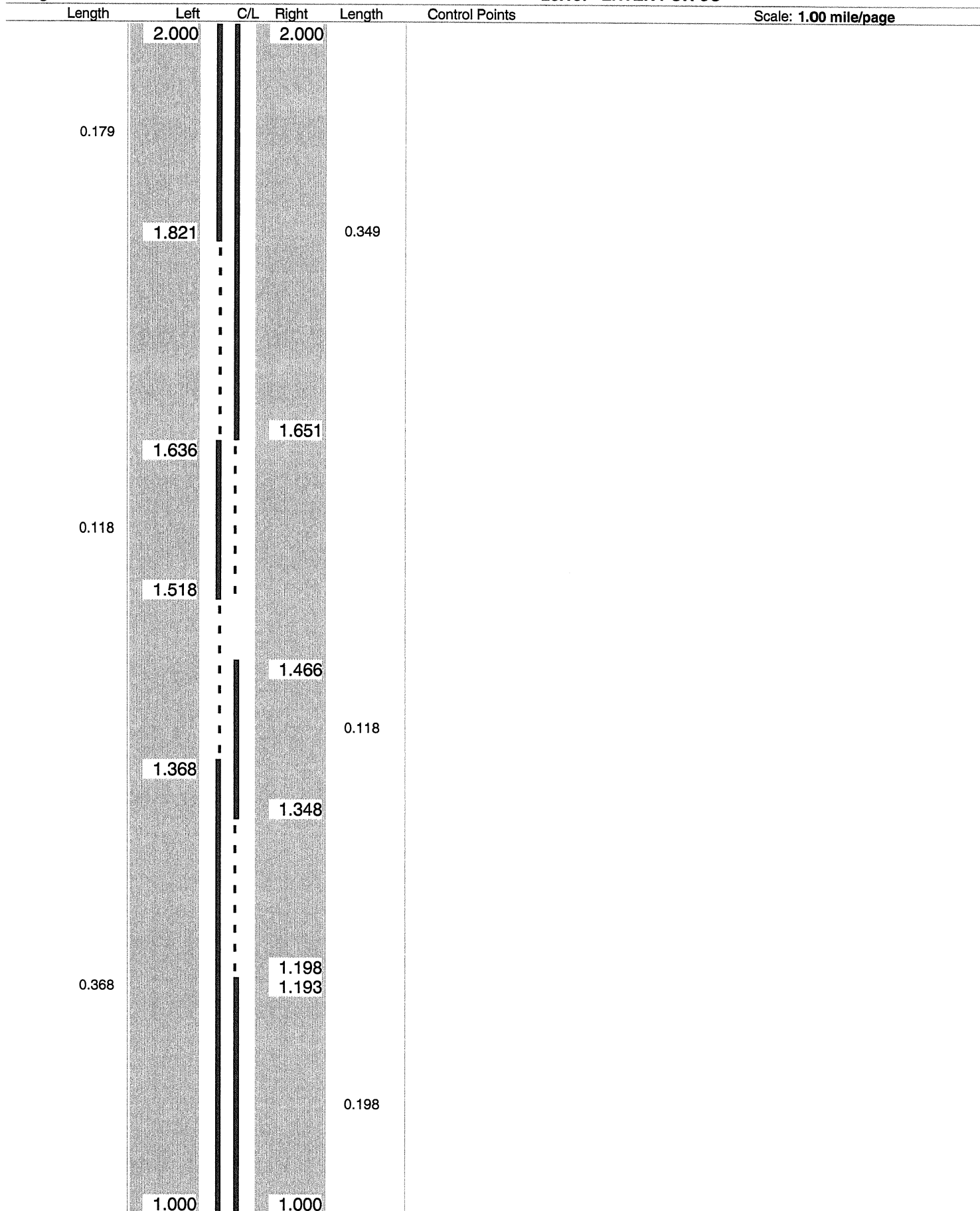


ODOT Dist 4 - Stark County - FINAL

No Passing Zone Log (STA)

Route: **0044R (SSTASR00044**C)**
 Length: **23.187** Direction: **North**

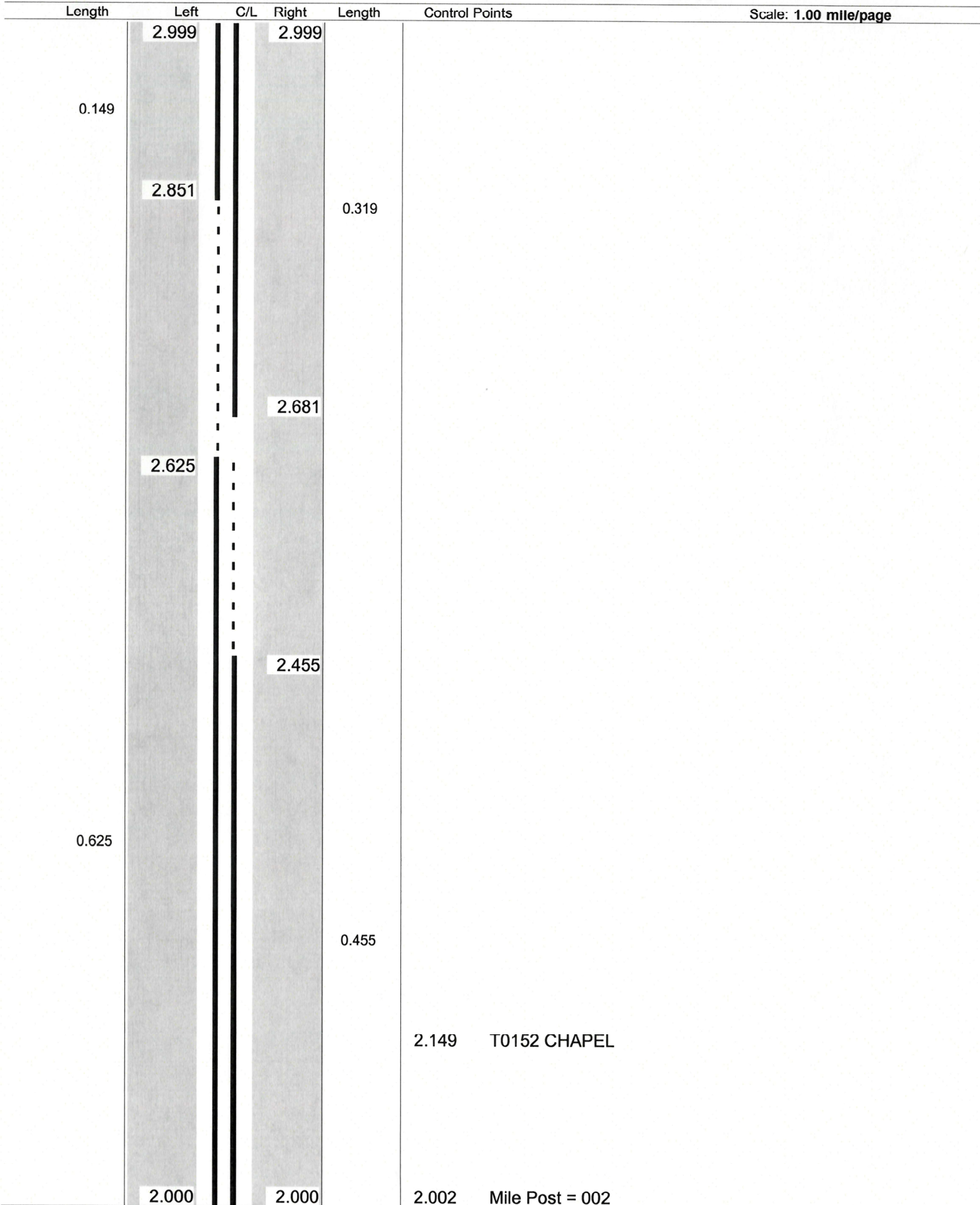
From: **0.000 S0043R**
 To: **23.187 ENTER POR CO**



**ODOT District 4
No Passing Zone Log (STA)**

Route: 0044R (SSTASR00044**C)
Length: 0.999 Direction: North

From: 2.000 S0043R
To: 2.999 ENTER POR CO



Sheet total equivalent length of solid line: 1.645

Accum. total: 1.645

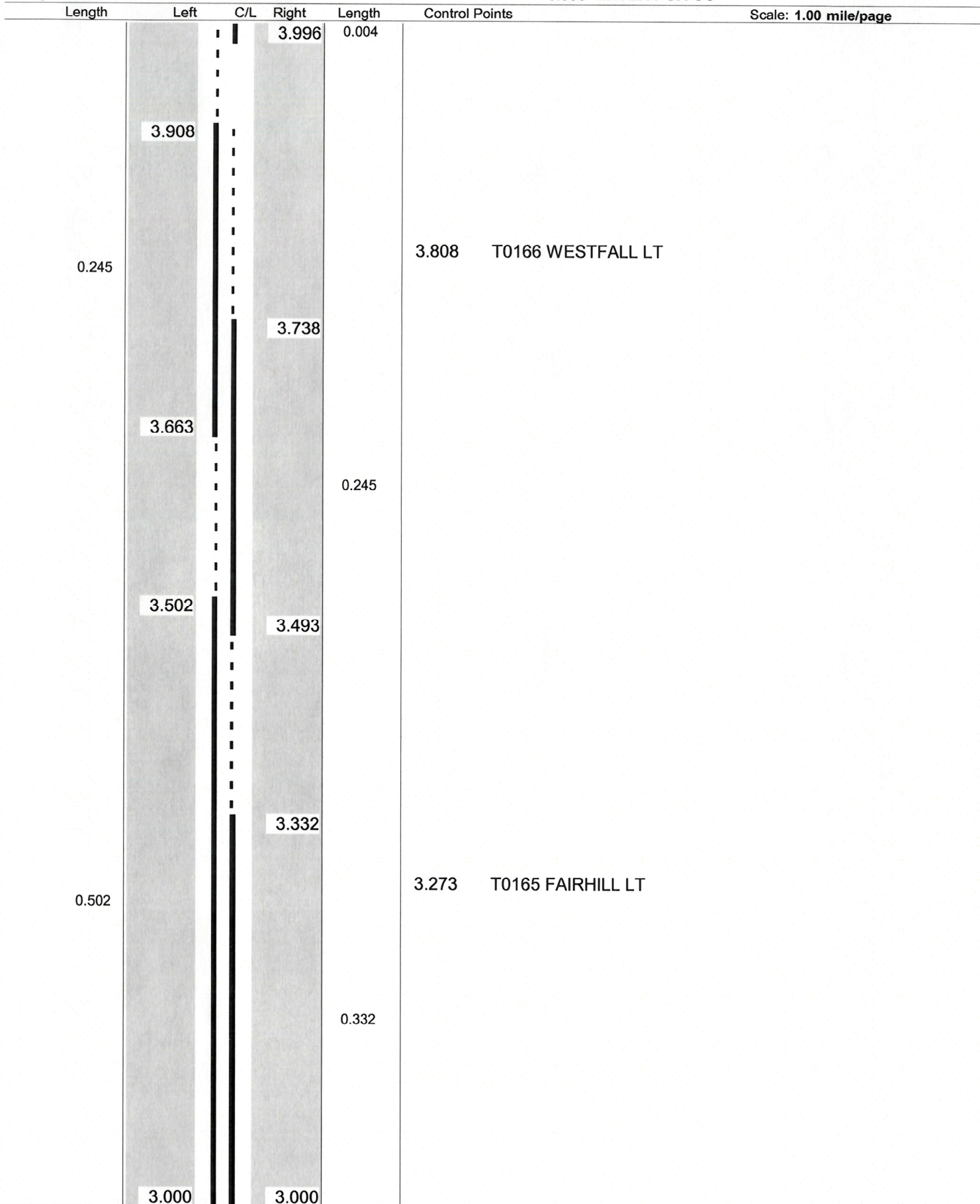
ODOT District 4
No Passing Zone Log (STA)

Route: 0044R (SSTASR00044**C)

From: 3.000 S0043R

Length: 0.999 Direction: North

To: 3.999 ENTER POR CO



**ODOT District 4
No Passing Zone Log (STA)**

Route: 0044R (SSTASR00044**C)
Length: 0.999 Direction: North

From: 4.000 S0043R
To: 4.999 ENTER POR CO

Length	Left	C/L	Right	Length	Control Points	Scale: 1.00 mile/page
	4.999		4.999			
					4.885 MAPLETON	
0.955				1.000		
	4.045		4.000		4.037 HILL CHURCH	

ODOT Dist 4 - Stark County - FINAL
No Passing Zone Log (STA)

Route: **0044R (SSTASR00044**C)**

Length: **23.187**

Direction: **North**

From: **0.000 S0043R**

To: **23.187 ENTER POR CO**



ODOT Dist 4 - Stark County - FINAL
No Passing Zone Log (STA)

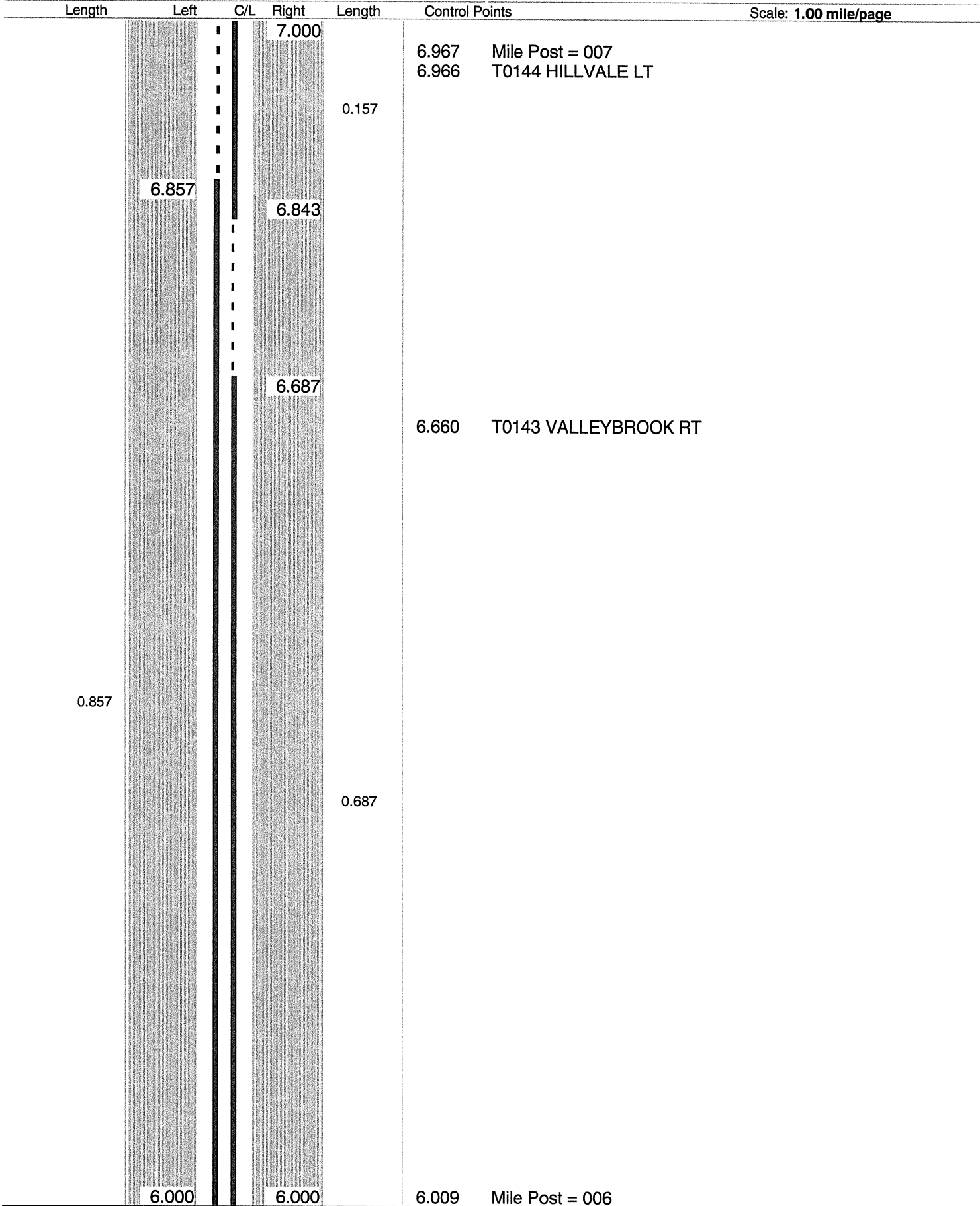
Route: **0044R (SSTASR00044**C)**

From: **0.000 S0043R**

Length: **23.187**

Direction: **North**

To: **23.187 ENTER POR CO**



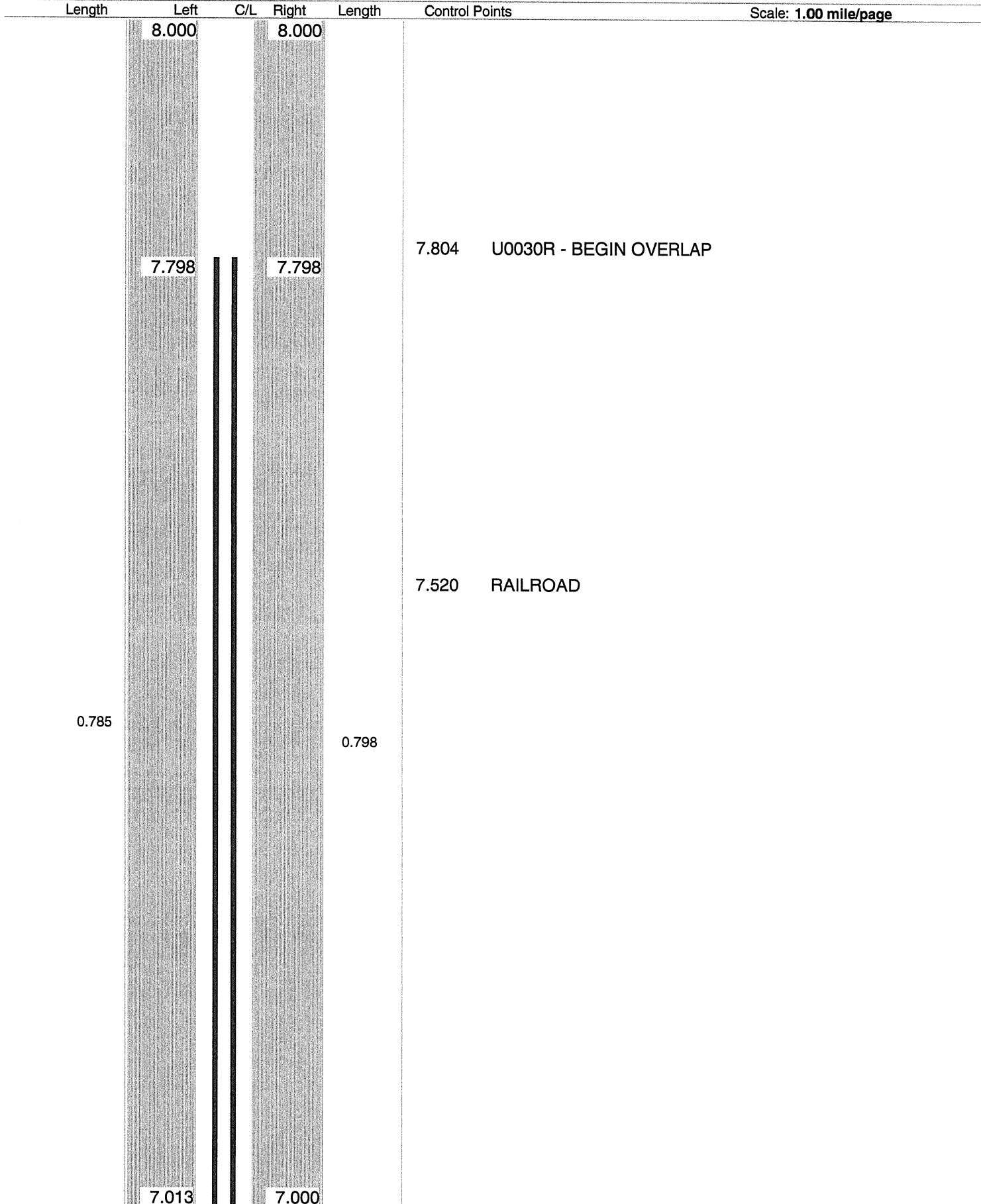
Sheet total equivalent length of solid line: 1.776

Accum. total: 12.209

ODOT Dist 4 - Stark County - FINAL
No Passing Zone Log (STA)

Route: **0044R (SSTASR00044**C)**
 Length: **23.187** Direction: **North**

From: **0.000 S0043R**
 To: **23.187 ENTER POR CO**



Sheet total equivalent length of solid line: 1.586

Accum. total: 13.795