



LOCATION MAP

LATITUDE: 40°59'18" LONGITUDE: 80°39'49"

SCALE IN MILES

0 1 2 3 4

PORTION TO BE IMPROVED
INTERSTATE HIGHWAY
FEDERAL ROUTES
STATE ROUTES
COUNTY & TOWNSHIP ROADS
OTHER ROADS



DESIGN DESIGNATION

DESIGN FUNCTIONAL CLASSIFICATION: URBAN FREEWAY / EXPRESSWAY

NHS PROJECT YES

DESIGN EXCEPTIONS

NONE

UNDERGROUND UTILITIES	
CONTACT BOTH SERVICES BEFORE YOU DIG	
CALL 1-800-362-2764 (TOLL FREE)	
OHIO UTILITIES PROTECTION SERVICE NON-MEMBERS MUST BE CALLED DIRECTLY	
OIL & GAS PRODUCERS UNDERGROUND PROTECTION SERVICE CALL: 1-800-925-0988	

PLAN PREPARED BY:
ODOT - DISTRICT 4 PLANNING & ENGINEERING
2008 SOUTH ARLINGTON RD.
AKRON, OHIO 44306



SIGNED: *Anthony E. Talar*
DATE: 09-19-16

STATE OF OHIO

DEPARTMENT OF TRANSPORTATION

SUM-77 / 21-21.99 / VAR

CITY OF NORTON AND FAIRLAWN
BATH AND COPLEY TOWNSHIP

SUMMIT COUNTY

INDEX OF SHEETS:

- | | |
|-------------------------|-------|
| TITLE SHEET | 1 |
| TYPICAL SECTIONS | 2-3 |
| GENERAL NOTES | 4-6 |
| MAINTENANCE OF TRAFFIC | 7-14 |
| GENERAL SUMMARY | 15-17 |
| PAVEMENT CALCULATIONS | 18-22 |
| GUARDRAIL SUBSUMMARY | 23 |
| PLAN INSERT SHEETS | 24-26 |
| TRAFFIC CONTROL | 27-40 |
| RAISED PAVEMENT MARKERS | 41 |
| PAVEMENT MARKINGS | 42-44 |
| STRUCTURES | 45-57 |

PROJECT DESCRIPTION

IMPROVEMENT OF 4.62 MILES OF SR 21 AND 2.21 MILES OF JR 77 IN SUMMIT COUNTY BY PLANING AND RESURFACING INCLUDING PARTIAL DEPTH, FULL DEPTH PAVEMENT REPAIRS, RESURFACING OF RAMPS. THIS PROJECT ALSO INCLUDES MINOR STRUCTURE REHABILITATION AND SEALING AS WELL AS SIGNING REPLACEMENT ON 5.18 MILES OF SR 21.

PROJECT EARTH DISTURBED AREA: 3.79 ACRES
ESTIMATED CONTRACTOR EDA: 1.00 ACRES
NOTICE OF INTENT EDA: N/A (NOI NOT REQUIRED)

LIMITED ACCESS

THIS IMPROVEMENT IS ESPECIALLY DESIGNED FOR THROUGH TRAFFIC AND HAS BEEN DECLARED A LIMITED ACCESS HIGHWAY OR FREEWAY BY ACTION OF THE DIRECTOR IN ACCORDANCE WITH THE PROVISIONS OF SECTION 5511.02 OF THE OHIO REVISED CODE.

2016 SPECIFICATIONS

THE STANDARD SPECIFICATIONS OF THE STATE OF OHIO, DEPARTMENT OF TRANSPORTATION, INCLUDING CHANGES AND SUPPLEMENTAL SPECIFICATIONS LISTED IN THE PROPOSAL SHALL GOVERN THIS IMPROVEMENT.

I HEREBY APPROVE THESE PLANS AND DECLARE THAT THE MAKING OF THIS IMPROVEMENT WILL NOT REQUIRE THE CLOSING TO TRAFFIC OF THE HIGHWAY EXCEPT AS NOTED ON SHEETS 10-14, AND THAT PROVISIONS FOR THE MAINTENANCE AND SAFETY OF TRAFFIC WILL BE AS SET FORTH ON THE PLANS AND ESTIMATES.

STANDARD CONSTRUCTION DRAWINGS										SUPPLEMENTAL SPECIFICATIONS	SPECIAL PROVISIONS
BP-3.1	7/18/14	VPF-1.90	7/17/15	MT-102.20	7/18/14	TC-65.10	1/17/14		600-206	10/21/16	
BP-9.1	7/19/13			MT-104.10	10/16/15	TC-65.11	7/15/16		808	1/29/16	
			7/15/16	MT-105.10	7/19/13	TC-71.10	7/15/16		821	4/20/12	
						TC-72.20	7/15/16		843	4/18/13	
M65-4.1	7/19/13	MT-95.30	7/15/16						849	1/18/13	
M65-2.1	7/19/13	MT-95.45	7/15/16						856	4/18/14	
M65-2.1	7/19/13	MT-97.10	7/15/16						908	1/29/16	
M65-3.1	7/18/14	MT-98.10	7/18/14	TC-7.65	1/15/16				952	4/18/14	
M65-4.1	7/18/14	MT-98.20	7/18/14	TC-12.30	10/18/13						
M65-4.1	7/18/14	MT-98.20	7/18/14	TC-21.20	7/19/13						
M65-6.1	7/19/13	MT-98.22	7/18/14	TC-41.10	7/19/13						
RW-4.1	7/19/13	MT-98.28	7/19/13	TC-42.10	10/18/13						
DS-1.92	7/18/13	MT-101.60	7/19/13	TC-42.20	10/18/13						
GSD-1.96	7/19/13	MT-101.70	7/19/13	TC-51.12	1/15/16						
PCB-91	1/18/13	MT-101.75	7/15/16	TC-52.10	10/18/13						
TST-1.99	7/15/16	MT-101.90	7/17/15	TC-52.20	7/15/16						

APPROVED: *[Signature]*
DATE: 9-19-16
DISTRICT DEPUTY DIRECTOR

APPROVED: _____
DATE: _____
DIRECTOR, DEPARTMENT OF TRANSPORTATION

- SUM-71-2321 (OVER SUM-SR18-1188)
- PATCH ALL UNSOUND AREAS OF THE CONCRETE DECK AND APPROACH SLABS
- REMOVE EXISTING SEALING FROM PARAPETS
- SEAL PATCHED WEARING SURFACE AND APPROACH SLABS WITH GRAVITY FED RESIN TREATMENT
- PATCH ALL UNSOUND AREAS OF THE SUBSTRUCTURE
- SEAL ALL EXPOSED CONCRETE SURFACES OF THE PARAPETS, MEDIAN, ABUTMENTS, AND MINOWALLS WITH EPOXY-URETHANE
- CLEARING AND GRUBBING WITHIN 15' OF STRUCTURE TO REMOVE ALL VEGETATION
- PROVIDE NEW STRUCTURE IDENTIFICATION SIGNS

ALTHOUGH THERE ARE NO TREES OR STUMPS SPECIFICALLY MARKED FOR REMOVAL WITHIN THE LIMITS OF THE PROJECT, A LUMP SUM QUANTITY IS INCLUDED IN THE GENERAL SUMMARY FOR ITEM 201, CLEARING AND GRUBBING. ALL PROVISIONS AS SET FORTH IN THE SPECIFICATIONS UNDER THIS ITEM ARE INCLUDED IN THE LUMP SUM PRICE BID FOR ITEM 201, CLEARING AND GRUBBING.

EROSION REPAIR

THIS WORK WILL CONSIST OF REPAIRING THE EROSION AT THE FOOTERS OF SUM-21-0680L AND SUM-21-0680R.

STRUCTURE SUM-21-0680L

ITEM 203 - BORROW. 8 CY

ITEM 601 - DUMPED ROCK.

100

STRUCTURE SUM-21-0680R

ITEM 203 - BORROW, 8 CY

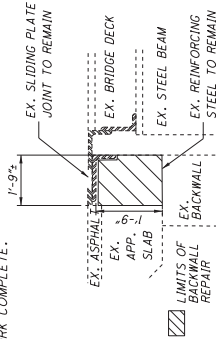
ITEM 601 - DUMPED ROCK, TYPE B, 25 CY

ITEM 511 - CONCRETE MISC.: BACKWALL REPAIR (SUM-21-0109)

THIS ITEM OF WORK CONSISTS OF THE REMOVAL OF ALL UNSOUND CONCRETE AT THE REAR ABUTMENT BACKWALL OF STRUCTURE SUM-21-0109 TO THE LIMITS SHOWN BELOW OR AS DIRECTED BY THE ENGINEER. THE PREPARATION OF THE SURFACE, FORMS, TEMPORARY SUPPORTS OF THE EXPANSION JOINT, AND PLACING CLASS MS CONCRETE, SUBSTRUCTURE.

TEMPORARY SUPPORTS OF THE EXPANSION JOINT WILL BE USED TO MAINTAIN THE PROPER ALIGNMENT AND GRADE OF THE JOINT DURING REMOVAL AND REPLACEMENT OF BACKWALL CONCRETE. THE COST OF THIS TEMPORARY SUPPORT WILL BE INCIDENTAL TO THIS ITEM.

PAYMENT WILL BE MADE AT THE CONTRACT PRICE PER CU. YD. FOR ITEM 511 - CONCRETE MISC.: BACKWALL REPAIR WHICH WILL INCLUDE ALL MATERIALS AND LABOR INCLUDING REMOVAL AND DISPOSAL OF THE EXISTING CONCRETE REQUIRED TO MAKE THIS WORK COMPLETE.



ITEM 516 - REFURBISHING BEARING DEVICES. AS PER PLAN

THIS ITEM SHALL INCLUDE ALL WORK NECESSARY TO PROPERLY MAINTAIN BRIDGE BEARINGS AS WELL AS THEIR CLEANING AND PAINTING. INCLUDED SHALL BE THE DISASSEMBLY OF THE BEARINGS, HAND TOOL CLEANING (GRINDING IF NECESSARY), PAINTING ACCORDING TO ITEM 514, REPLACEMENT OF ANY DAMAGED SHEET LEAD WITH PRE-FORMED BEARING PADS (711.2), INSTALLATION OF ANY NECESSARY STEEL SHIMS OF THE SAME SIZE AS THE BEARINGS TO PROVIDE A SNUG FIT, REALIGNMENT OF THE UPPER BEARING PLATE BY REMOVING EXISTING WELDS AND REWELDING SO THAT THE BEARINGS ARE VERTICALLY ALIGNED AT 60 DEGREES F, LUBRICATING SLIDING SURFACES, AND REASSEMBLY OF THE BEARINGS. ASSURE ALL BEARINGS ARE SHIMMED ADEQUATELY AND THAT NO BEAMS AND/OR BEARING DEVICES ARE "FLOATING". AT NO ADDITIONAL COST TO THE STATE, THE CONTRACTOR MAY INSTALL NEW BEARINGS OF THE SAME TYPE AS THE EXISTING IN PLACE OF REFURBISHING THE SAME. ALL WORK SHALL BE TO THE SATISFACTION OF THE ENGINEER. ALL WORK SHALL BE TO THE SATISFACTION OF THE ENGINEER. PAYMENT FOR ALL OF THE ABOVE DESCRIBED LABOR AND MATERIALS WILL BE MADE AT THE CONTRACT PRICE BID FOR ITEM 516 - REFURBISH BEARING DEVICES. SEE PFD PLAN.

ITEM 519 - PATCHING CONCRETE STRUCTURES. AS PER PLAN

PRIOR TO THE SURFACE CLEANING SPECIFIED IN 519.04 AND WITHIN 24 HOURS OF PLACING PATCHING MATERIAL, BLAST CLEAN ALL SURFACES TO BE PATCHED INCLUDING THE EXPOSED REINFORCING STEEL. ACCEPTABLE METHODS INCLUDE HIGH-PRESSURE WATER BLASTING WITH OR WITHOUT ABRASIVES IN THE WATER, ABRASIVE BLASTING WITH CONTAINMENT, OR VACUUM ABRASIVE BLASTING.

ITEM 516, JACKING AND TEMPORARY SUPPORT OF SUPER-
STRUCTURE, AS PER PLAN

THIS WORK CONSISTS OF RAISING OR RE-POSITIONING EXISTING STRUCTURES TO THE DIMENSIONS AND REQUIREMENTS DEFINED IN THE PROJECT PLANS.

SUBMIT CONSTRUCTION PLANS IN ACCORDANCE WITH CMS 501.05.

CONCRETE SUPERSTRUCTURE, SEPARATION OF THE CONCRETE DECK FROM THE STEEL STRINGERS, OR OTHER DAMAGE TO THE STRUCTURE IS VISUALLY OBSERVED, IMMEDIATELY CEASE THE JACKING OPERATION AND INSTALL SUPPORTS TO THE SATISFACTION OF THE ENGINEER. ANALYZE THE DAMAGE AND SUBMIT A METHOD OF CORRECTION TO THE ENGINEER FOR APPROVAL. EPOXY INJECT ALL BEAMS THAT SEPARATE FROM THE DECK FOR THE DISTANCE OF THE SEPARATION IN ACCORDANCE WITH CMS 512.07. THE DEPARTMENT WILL NOT PAY FOR THE COST OF THIS EPOXY INJECTION OR OTHER REQUIRED REPAIRS. THE BRIDGE BEARINGS SHALL BE FULLY SEALED AT ALL CONTACT AREAS. IF FULL SEATING IS NOT ATTAINED, SUBMIT A REPAIR PLAN TO THE ENGINEER. THE DEPARTMENT WILL NOT PAY FOR THE REPAIR COSTS TO ENSURE FULL SEATING ON BEARINGS.

THE DEPARTMENT WILL MEASURE THIS WORK ON A LUMP SUM BASIS.

THE DEPARTMENT WILL PAY FOR THE ACCEPTED QUANTITIES AT THE CONTRACT PRICE FOR ITEM 516, JACKING AND TEMPORARY SUPPORT OF SUPERSTRUCTURE, AS PER PLAN.

SPECIAL - PATCHING CONCRETE STRUCTURE, MISC.:
CURB REPAIR (SUM-21-0109)

THIS ITEM WILL BE USED TO REPAIR THE DETERIORATED FACE OF THE CURB ON THE BRIDGE DECK AND/OR APPROACH SLABS. THIS WORK WILL BE PERFORMED IN ACCORDANCE WITH ITEM 519 - PATCHING CONCRETE STRUCTURES AND AS MODIFIED HEREIN.

PRIOR TO THE SURFACE CLEANING SPECIFIED IN 519.04 AND WITHIN 24 HOURS OF PLACING PATCHING MATERIAL, BLAST CLEAN ALL SURFACES TO BE PATCHED INCLUDING THE EXPOSED REINFORCING STEEL. ACCEPTABLE METHODS INCLUDE HIGH-PRESSURE WATER BLASTING WITH OR WITHOUT ABRASIVES IN THE WATER, ABRASIVE BLASTING WITH CONTAMINANT, OR VACUUM ABRASIVE BLASTING.

PAYMENT FOR ALL OF THE ABOVE DESCRIBED LABOR AND MATERIALS WILL BE MADE AT THE CONTRACT PRICE BID FOR SPECIAL - PATCHING CONCRETE STRUCTURE, MISC.: CURB REPAIR AND WILL BE PAID FOR PER FOOT.

SUM-21-0109
SPEC. PATCHING CONCRETE STRUCTURE. MISC.: CURB REPAIR. 120 FT

ITEM 518 - SCUPPER MISC.: CLEANOUT

THIS WORK WILL CONSIST OF REMOVING ALL DEBRIS FROM ON TOP AND INSIDE OF THE SCUPPERS. SCUPPER CLEANOUT WILL BE PAID FOR AT THE UNIT PRICE BID FOR ITEM 518. SCUPPER MISC.: CLEANOUT. THIS PRICE WILL INCLUDE THE COST FOR LABOR, EQUIPMENT, AND ALL INCIDENTALS REQUIRED TO COMPLETE THIS WORK.

SPECIAL - STRUCTURE MISC.: CONCRETE SPALL REMOVAL
(SUM-21-0109)

THIS WORK WILL CONSIST OF REMOVING ALL VISIBLY SPALLED AREAS OF THE BOTTOM DECK FLOOR OF STRUCTURE SUM-21-0109 WITHOUT SOUNDING. AFTER SPALLED CONCRETE AREAS HAVE BEEN REMOVED, REMOVAL AREAS WILL BE SEALED WITH ITEM 512. SEALING OF CONCRETE SURFACES (EPOXY URETHANE).

CONCRETE SPALL REMOVAL WILL BE PAID FOR AT THE UNIT BID PRICE FOR SPECIAL - STRUCTURE MISC.: CONCRETE SPALL REMOVAL. THIS PRICE WILL INCLUDE THE COST OF LABOR, EQUIPMENT, AND ALL INCIDENTALS REQUIRED TO COMPLETE THIS WORK.

SPEC: STRUCTURE MISC.: CONCRETE SPALL REMOVAL 50 SQ YD

ITEM 630 - GROUND MOUNTED SUPPORT, NO. 2 POST, 21 FT
ITEM 630 - SIGN, FLAT SHEET, 6 SO FT
ITEM 630 - SIGN, FLAT SHEET, 730.20, 1 SO FT
ITEM 630 - REMOVAL OF GROUND MOUNTED SIGN AND DISPOSAL,
3 EACH
ITEM 630 - REMOVAL OF GROUND MOUNTED POST SUPPORT
AND DISPOSAL, 2 EACH

ITEM 607 - VANDAL PROTECTION FENCE, 12' CURVED, COATED
FABRIC, 228 FT

OBJECT MARKERS AND STRUCTURE/CULVERT IDENTIFICATION SIGNS

SUM-77/21-
21.99/VAR
PID No. 84659

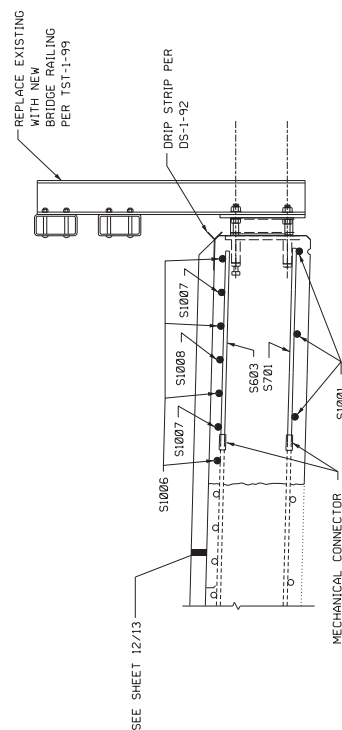
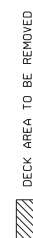
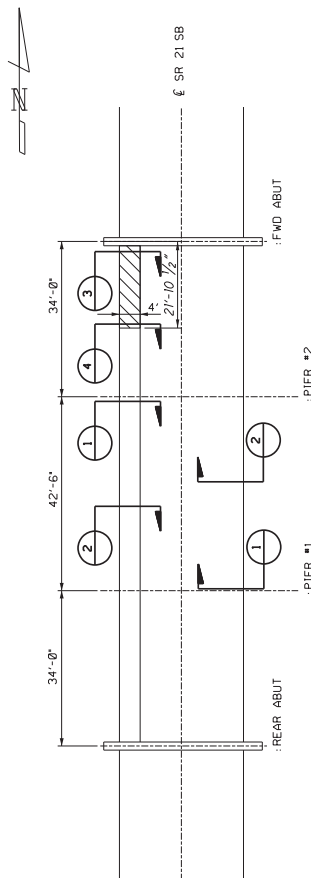
DECK EDGE REPLACEMENT

SUM-21-0680L
COVER BARBERTON RESERVOIR INLET

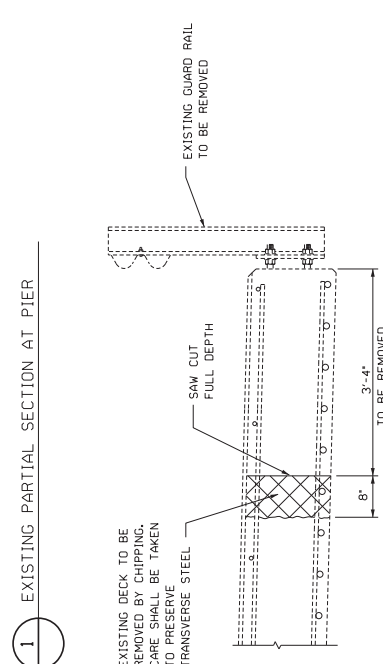
DESIGNED	HKS	REVIEWED	MAC	09/14/16	STRUCTURE FILE NUMBER	7701500
CHECKED	RAS	REVISED	HKS			

ODOT --- DISTRICT 4
DESIGN AGENCY

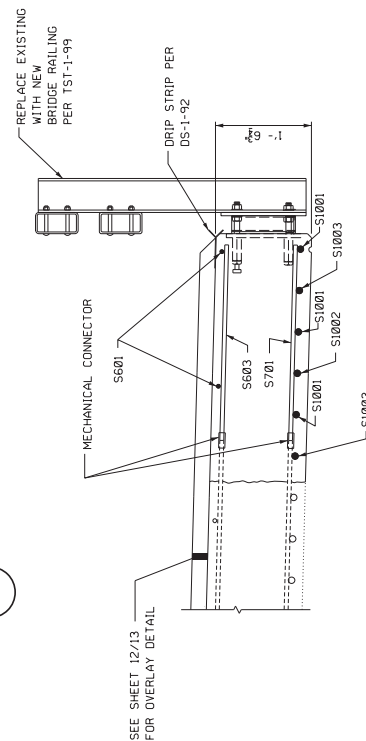
PLANNING AND ENGINEERING



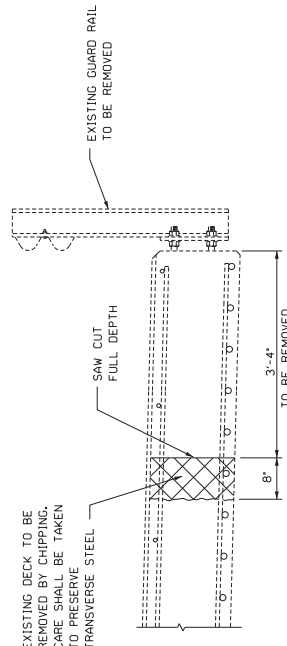
4 PROPOSED PARTIAL SECTION AT PIER



1) EXISTING PARTIAL SECTION AT PIER



3 PROPOSED PARTIAL SECTION AT MIDSPAN AND ABUTMENTS



2 EXISTING PARTIAL SECTION AT MIDSPAN AND ABUTMENTS

ARBITMENT TOTAL

THE BAR SIZE NUMBER IS SPECIFIED ON THE PLANS IN THE BAR MARK COLUMN. THE FIRST DIGIT WHERE THREE DIGITS ARE USED, AND THE FIRST TWO DIGITS WHERE FOUR DIGITS ARE USED, INDICATES THE BAR SIZE NUMBER. FOR EXAMPLE, 56601 IS A NO. 6 BAR AND 51001 IS A NO. 10 BAR. BAR DIMENSIONS SHOWN ARE O.U.T TO O.U.T UNLESS OTHERWISE INDICATED.

ALL REINFORCING STEEL TO BE EPOXY COATED.

* BARS ARE TO BE DOWEL WITH NONSHRINK NONMETALLIC GROUT

TYPE-2

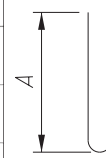
NOTE: PIER #1 SHOWN
PIER #2 OPPOSITE

[illegible]

■ MECHANICAL CONNECTOR REQUIRED

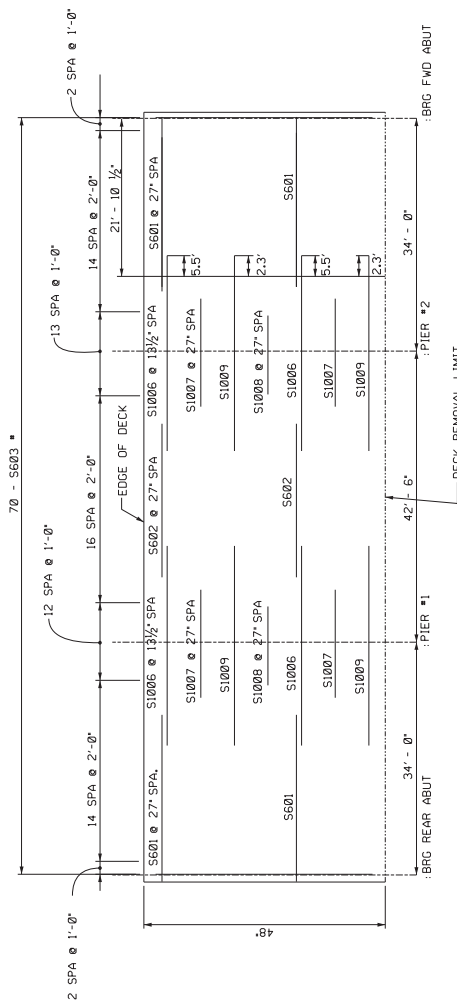
THE BAR SIZE NUMBER IS SPECIFIED ON THE PLANS IN THE BAR MARK COLUMN, THE FIRST DIGIT WHERE THREE DIGITS ARE USED, AND THE FIRST TWO DIGITS WHERE FOUR DIGITS ARE USED, INDICATES THE BAR SIZE NUMBER, FOR EXAMPLE, S601 IS A NO. 6 BAR AND S1001 IS A NO. 10 BAR. BAR DIMENSIONS ARE OUT TO OUT UNLESS OTHERWISE INDICATED.

ALL REINFORCING STEEL TO BE EPOXY COATED.



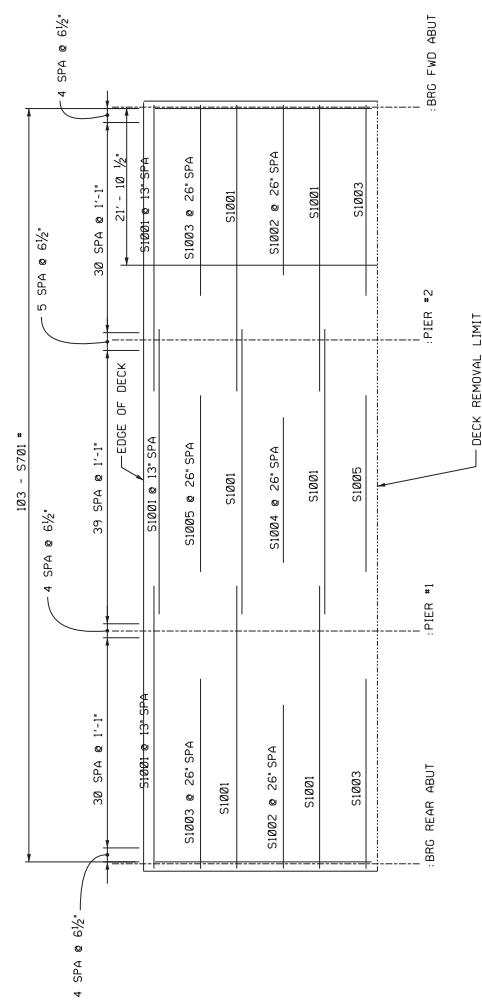
TVDC-16

HOOK END TO GO
AT ABUTMENT



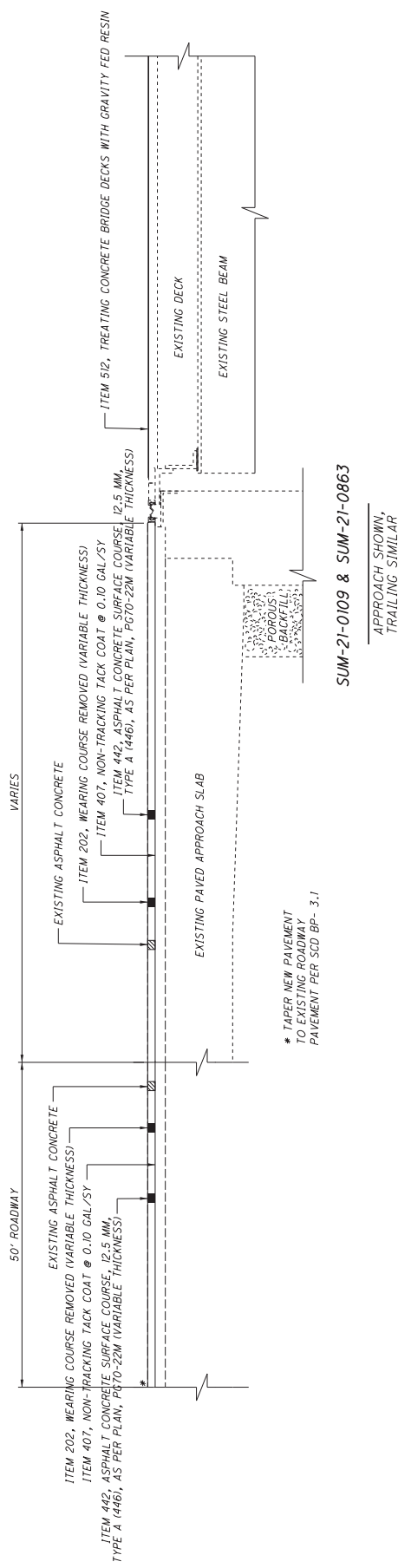
TOP REINFORCING LAYOUT

REINFORCING STEEL IS TYPICAL FOR BOTH SIDES OF DECK.
ALL REINFORCING CLEARANCES ARE A MINIMUM OF 2"



BOTTOM REINFORCING LAYOUT

REINFORCING STEEL IS TYPICAL FOR BOTH SIDES OF DECK.
ALL REINFORCING CLEARANCES ARE A MINIMUM OF 2".

[illegible]

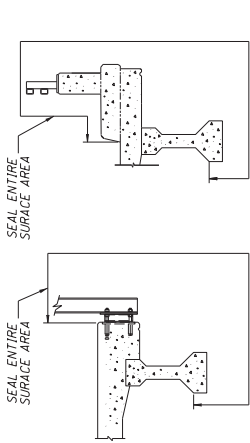
APPROACH SLABS

BRIDGE DECK

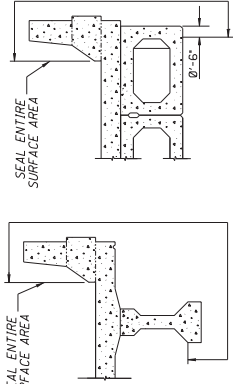
APPROACH SHOWN,
TRAILING SIMILAR

BRIDGE NUMBER	STRUCTURE TYPE	PROPOSED SEALING	FEDERAL COLOR NUMBER	ESTIMATED QUANTITIES				
				ABUT (SQ YD)	PIER (SQ YD)	SUPER (SQ YD)	GENERAL (SQ YD)	TOTAL (SQ YD)
SUM-21-0109	4 SPAN CONTINUOUS STEEL BEAM	SEAL ALL EXPOSED CONCRETE AT CURBS AND RAILINGS SEAL SPALL REMOVALS FROM DECK FLOOR	PER CMS			439	50	489
SUM-21-0260	4 SPAN COUNTINUOUS STEEL BEAM	SEAL PATCHED AREAS	PER CMS				300	300
SUM-21-0570	4 SPAN CONTINUOUS STEEL BEAM	SEAL PATCHED AREAS SEAL ALL EXPOSED CONCRETE AT PIERS	PER CMS		318		300	618
SUM-21-0680L	3 SPAN CONCRETE SLAB CONTINUOUS	SEAL PATCHED AREAS	PER CMS				250	250
SUM-21-0680R	3 SPAN CONCRETE SLAB CONTINUOUS	SEAL PATCHED AREAS G	PER CMS G				250	250
SUM-21-0757L	3 SPAN STEEL BEAM CONTINUOUS	SEAL ALL EXPOSED CONCRETE AT PARAPETS PER DETAIL G SEAL PATCHED AREAS SEAL GRAFFITI REMOVAL AREAS	PER CMS		210	550	300	1060
SUM-21-0757R	3 SPAN STEEL BEAM CONTINUOUS	SEAL ALL EXPOSED CONCRETE AT PARAPETS PER DETAIL G SEAL PATCHED AREAS SEAL GRAFFITI REMOVAL AREAS	PER CMS		210	547	300	1057
SUM-21-0780L	SIMPLE SPAN STEEL BEAM	SEAL ALL EXPOSED CONCRETE AT PARAPETS PER DETAIL G	PER CMS			289		289
SUM-21-0780R	SIMPLE SPAN STEEL BEAM	SEAL ALL EXPOSED CONCRETE AT PARAPETS PER DETAIL G	PER CMS			228		228
SUM-21-0863	4 SPAN CONTINUOUS STEEL BEAM	SEAL ALL EXPOSED CONCRETE AT PARAPETS PER DETAIL G SEAL ALL EXPOSED CONCRETE AT CURBS	PER CMS			550		550
SUM-21-0828	3 SPAN CONTINUOUS STEEL BEAM	SEAL ALL EXPOSED CONCRETE AT PARAPETS PER DETAIL G	PER CMS			519		519
SUM-77-2234L	CONTINUOUS DOG-LEGGED STEEL GIRDERS	SEAL ALL EXPOSED CONCRETE AT MEDIAN PARAPET PER DETAIL G SEAL PATCHED AREAS	PER CMS			212	250	462
SUM-77-2234R	CONTINUOUS STEEL GIRDERS	SEAL ALL EXPOSED CONCRETE AT PARAPETS PER DETAIL G SEAL EXPOSED CONCRETE AT ABUTMENTS SEAL EXPOSED CONCRETE AT PIERS	PER CMS	178	199	505		882
SUM-77-2321	4 SPAN CONTINUOUS STEEL BEAM	SEAL ALL EXPOSED CONCRETE AT PARAPETS PER DETAIL G SEAL EXPOSED CONCRETE AT ABUTMENTS SEAL EXPOSED CONCRETE AT PIERS	PER CMS	182	938	456		1576

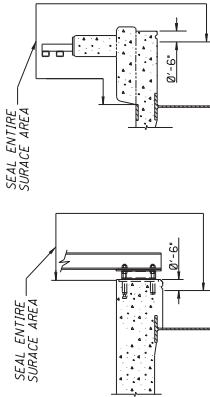
NOTES:
- EPOXY-URETHANE SEALER SHALL BE USED UNLESS SHOWN OTHERWISE
- DETAILS E, F, G AND H ALSO APPLY TO CONCRETE SLAB BRIDGES



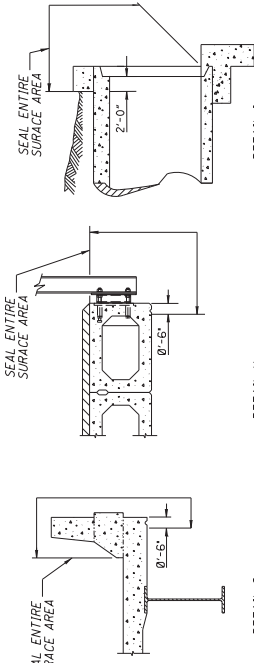
DETAIL A
CONCRETE DECKS WITH
OVER THE SIDE DRAINAGE



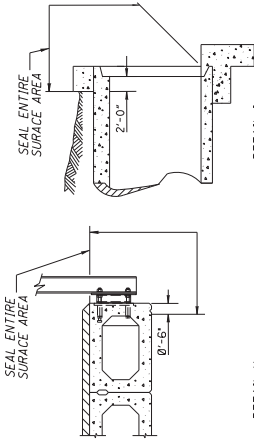
DETAIL B
CONCRETE DECKS WITH CURBS,
SIDEWALKS AND PARAPET



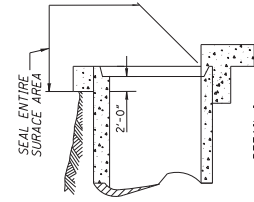
DETAIL C
CONCRETE DECK WITH
DEFLECTOR PARAPET



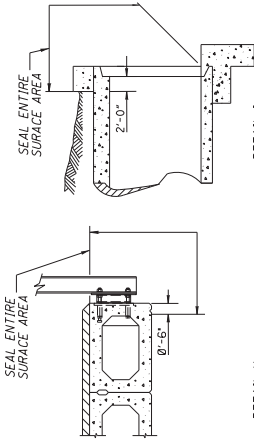
DETAIL D
PRESTRESSED BOX BEAM DECK
WITH DEFLECTOR PARAPET



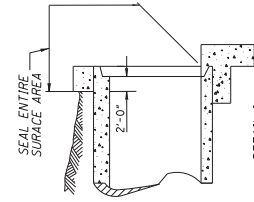
DETAIL E
CONCRETE DECKS WITH CURBS,
SIDEWALKS AND PARAPET



DETAIL F
CONCRETE DECKS WITH CURBS,
SIDEWALKS AND PARAPET



DETAIL G
CONCRETE DECK WITH
DEFLECTOR PARAPET



DETAIL H
PRESTRESSED BOX BEAM DECK
WITH DEFLECTOR PARAPET