



National Engineering & Architectural Services, INC. (NEAS)
 2800 Corporate Exchange Dr.
 Suite 240
 Columbus, Ohio 43231
 Office: (614) 714-0299
 Fax: (614) 714-0251

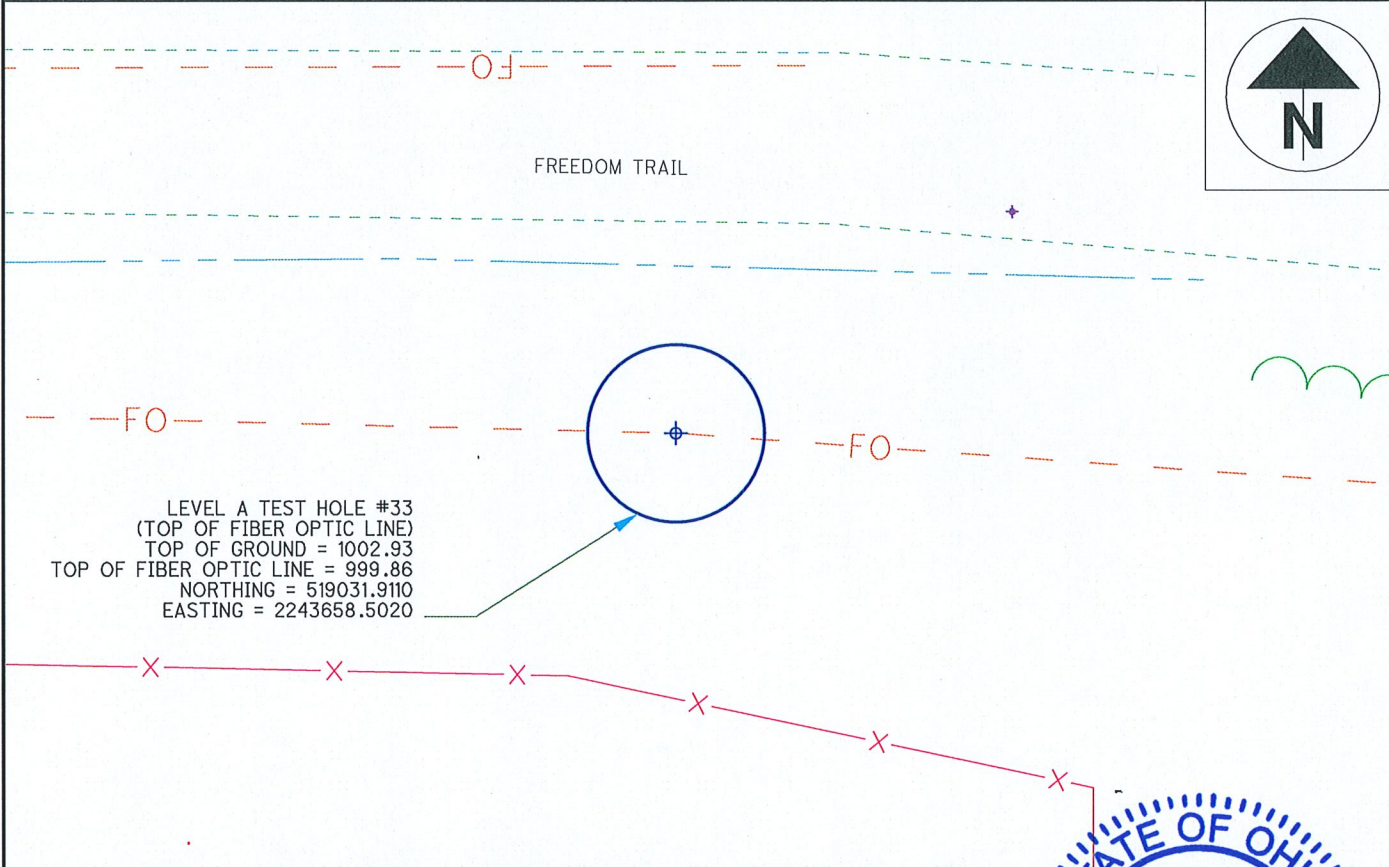
LEVEL A TEST HOLE CERTIFICATION FORM

PROJECT NAME: SUM-008-1.75 PID#91710
 PROJECT LOCATION (COUNTY, CITY, STATE): SUMMIT, AKRON, OHIO
 TEST HOLE LOCATION (PAV., SIDEWALK, ETC): NEAR RR TRACKS
 PAVING CONDITION PRIOR TO WORK: N/A
 B.M. #: _____
 B.M. ELEV: _____
 DESCRIPTION: _____
 B.M. #: _____
 B.M. ELEV: _____
 DESCRIPTION: _____

PROJECT #: 16-0187
 TEST HOLE #: 33
UTILITY TO BE LOCATED: FIBER OPTIC LINE (FOUND)
 DATE OF EXCAVATION: 11/28/18
 WEATHER CONDITIONS: 20° CLOUDY
 FOREMAN/TRUCK: N. MILLER/R. WEBB/N. LOSONCY
 CONTROL POINT: 215
 NORTHING: 519010.1830
 EASTING: 2243918.3390
 ELEVATION: 1001.48

RECORDED SIZE & TYPE: SIZE & TYPE CONFIRMED
 THERE WERE NOT ADDITIONAL UTILITIES IN THE TEST HOLE
 THE UTILITY WAS IN GOOD CONDITION
 COLOR OF RIBBON INSTALLED IN TEST HOLE: ORANGE
 PAVING THICKNESS AND TYPE: N/A
 SOIL TYPE: DIRT & ROCK
 FIELD REMARKS: FIBER FOUND SOUTH OF STAKEOUT

EXISTING GRADE OF GROUND
 GRADE ELEVATION: 1002.93
 SURVEYED ELEVATION TOP OF UTIL: 999.86
 SURVEYED ELEVATION BOT. OF UTIL (IF REQ.): _____
 SURVEYED SIZE AND TYPE OF UTIL: 2.5", STEEL
 DIRECTION & DEPTH OF UTILITY LINE: W to E, 3.07'
 UTILITY REMARKS: AT&T FIBER OPTIC MARKED BY OTHERS
 PHOTO IMAGE NUMBERS: 700-701



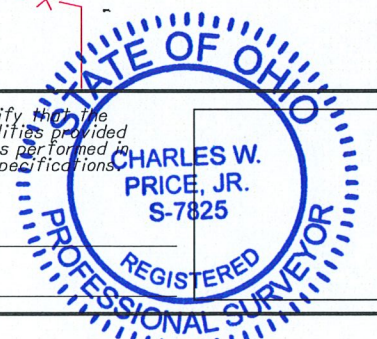
LEVEL A TEST HOLE #33
 (TOP OF FIBER OPTIC LINE)
 TOP OF GROUND = 1002.93
 TOP OF FIBER OPTIC LINE = 999.86
 NORTHING = 519031.9110
 EASTING = 2243658.5020

UTILITY LEGEND

GAS — G —	TEST HOLE	ELEC. P.B.
WATER — W —	FIRE HYDRANT	POWER POLE
TELEPHONE — T —	WATER VALVE	POWER/LIGHT
ELECTRIC — E —	GAS MARKER	LIGHT POLE
SANITARY SEWER — SAN —	GAS VALVE	SAN M.H.
STORM SEWER — SS —	F.O. MARKER	TRAFFIC P.B.
FIBER OPTIC — FO —	UNKNOWN P.B.	GROUND SHOT
CABLE TV — CTV —		
TRAFFIC — TR —		

I, Chuck Price, do hereby certify that the positioning of the utility facilities provided utilizing the Quality Levels was performed in accordance with ODOT's SALS specifications.

Charles W. Price, Jr.
 Chuck Price, P.S.
 DATE 12/11/18





National Engineering & Architectural Services, INC. (NEAS)
 2800 Corporate Exchange Dr.
 Suite 240
 Columbus, Ohio 43231
 Office: (614) 714-0299
 Fax: (614) 714-0251

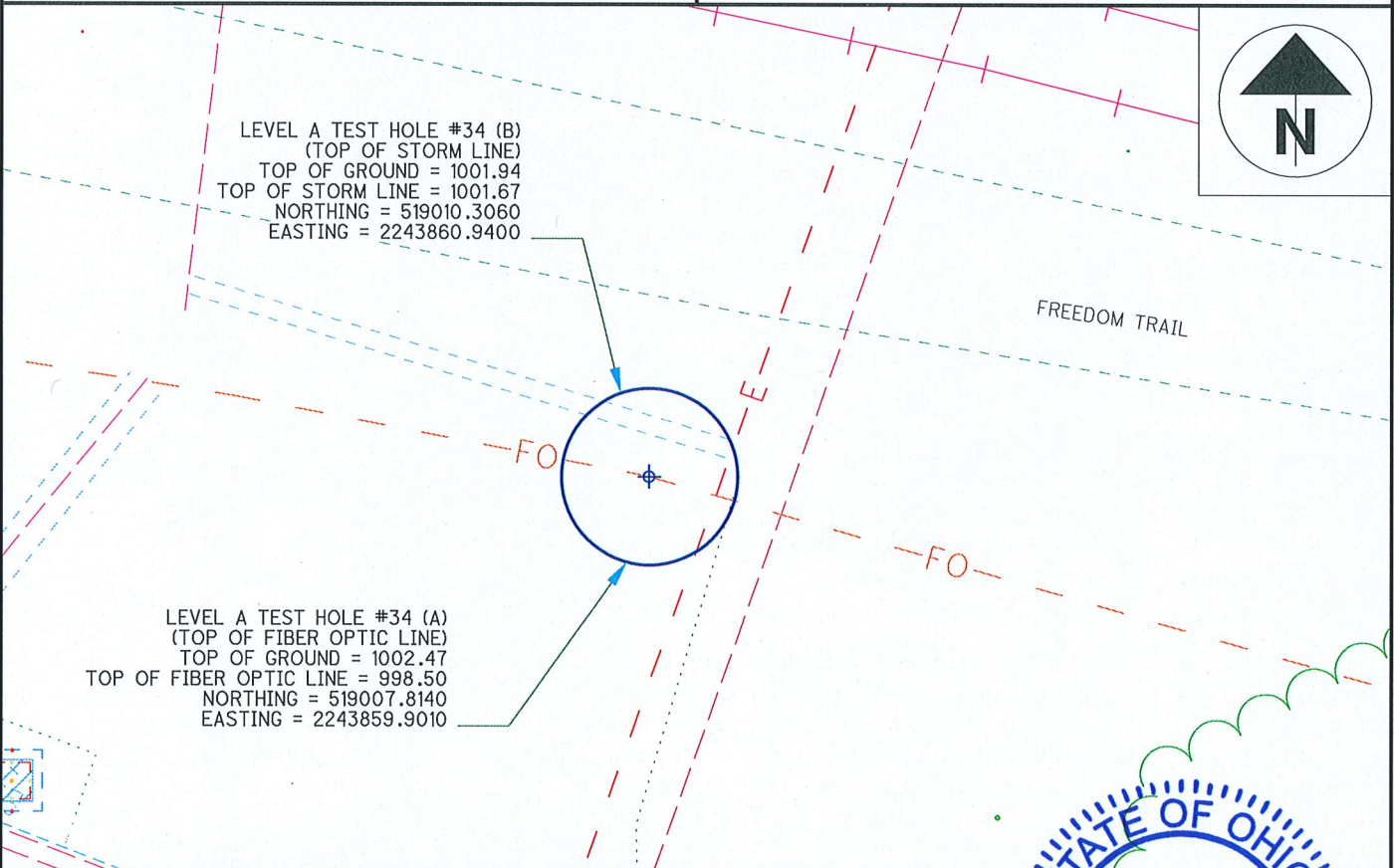
LEVEL A TEST HOLE CERTIFICATION FORM

PROJECT NAME: SUM-008-1.75 PID#91710
 PROJECT LOCATION (COUNTY, CITY, STATE): SUMMIT, AKRON, OHIO
 TEST HOLE LOCATION (PAV., SIDEWALK, ETC): NEAR RR TRACKS
 PAVING CONDITION PRIOR TO WORK: N/A
 B.M. #: _____
 B.M. ELEV: _____
 DESCRIPTION: _____
 B.M. #: _____
 B.M. ELEV: _____
 DESCRIPTION: _____

PROJECT #: 16-0187
 TEST HOLE #: 34
UTILITY TO BE LOCATED: FIBER OPTIC LINE (FOUND)
 DATE OF EXCAVATION: 11/28/18
 WEATHER CONDITIONS: 20° SNOW
 FOREMAN/TRUCK: N. MILLER/C. OTTEN, R. WEBB/N. LOSONCY
 CONTROL POINT: 215
 NORTHING: 519010.1830
 EASTING: 2243918.3390
 ELEVATION: 1001.48

RECORDED SIZE & TYPE: SIZE & TYPE CONFIRMED
 THERE WERE ADDITIONAL UTILITIES IN THE TEST HOLE
 THE UTILITY WAS IN GOOD CONDITION
 COLOR OF RIBBON INSTALLED IN TEST HOLE: ORANGE
 PAVING THICKNESS AND TYPE: N/A
 SOIL TYPE: DIRT & ROCK
 FIELD REMARKS: FIBER FOUND SOUTH OF STAKEOUT, 12" CPP FOUND JUST BELOW THE SURFACE.

EXISTING GRADE OF GROUND
 GRADE ELEVATION: 1002.47 (A), 1001.94 (B)
 SURVEYED ELEVATION TOP OF UTIL: 998.50 (A), 1001.67 (B)
 SURVEYED ELEVATION BOT. OF UTIL (IF REQ.): _____
 SURVEYED SIZE AND TYPE OF UTIL: 2.5", STEEL (A), 12" CPP (B)
 DIRECTION & DEPTH OF UTIL. LINE: W to E (A&B), 3.97' (A), 0.27' (B)
 UTILITY REMARKS: AT&T FIBER OPTIC MARKED BY OTHERS
 PHOTO IMAGE NUMBERS: 698-699



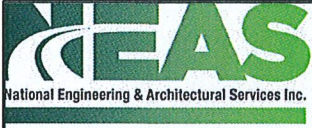
UTILITY LEGEND

GAS		G	TEST HOLE		ELEC. P.B.	
WATER		W	FIRE HYDRANT		POWER POLE	
TELEPHONE		T	WATER VALVE		POWER/LIGHT	
ELECTRIC		E	GAS MARKER		LIGHT POLE	
SANITARY SEWER		SAN	GAS VALVE		SAN M.H.	
STORM SEWER		SS	F.O. MARKER		TRAFFIC P.B.	
FIBER OPTIC		FO	UNKNOWN P.B.		GROUND SHOT	
CABLE TV		CTV				
TRAFFIC		TR				

I, Chuck Price, do hereby certify that the positioning of the utility facilities provided utilizing the Quality Levels was performed in accordance with ODOT's SALS specifications.

Charles W. Price, Jr.
 Registered Professional Surveyor
 S-7825
 Chuck Price, P.S.
 DATE 12/11/18





National Engineering & Architectural Services, INC. (NEAS)
 2800 Corporate Exchange Dr.
 Suite 240
 Columbus, Ohio 43231
 Office: (614) 714-0299
 Fax: (614) 714-0251

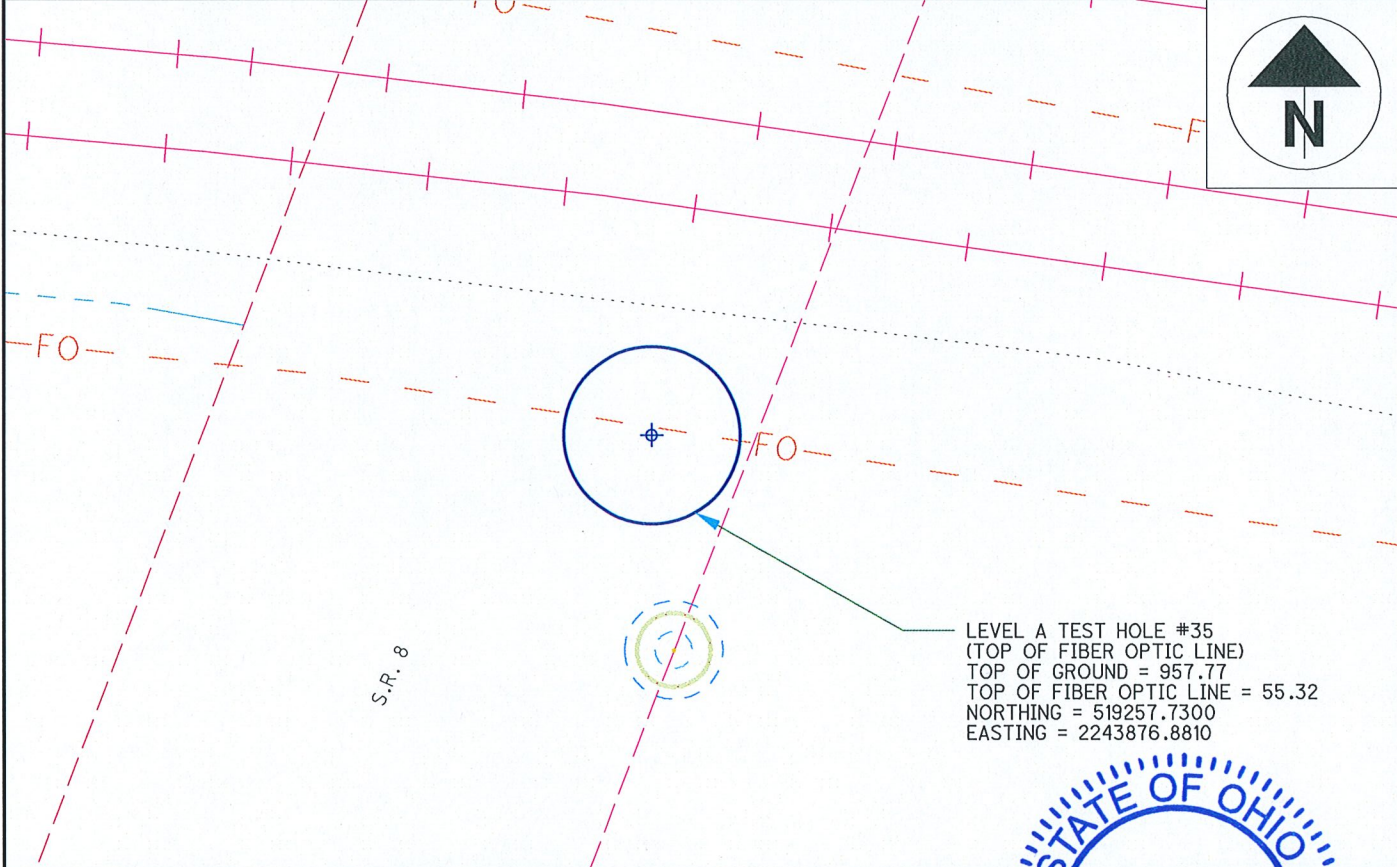
LEVEL A TEST HOLE CERTIFICATION FORM

PROJECT NAME: SUM-008-1,75 PID#91710
 PROJECT LOCATION (COUNTY, CITY, STATE): SUMMIT, AKRON, OHIO
 TEST HOLE LOCATION (PAV., SIDEWALK, ETC): NEAR RR TRACKS
 PAVING CONDITION PRIOR TO WORK: N/A
 B.M. #: _____
 B.M. ELEV: _____
 DESCRIPTION: _____
 B.M. #: _____
 B.M. ELEV: _____
 DESCRIPTION: _____

PROJECT #: 16-0187
 TEST HOLE #: 35
UTILITY TO BE LOCATED: FIBER OPTIC LINE (FOUND)
 DATE OF EXCAVATION: 11/29/18
 WEATHER CONDITIONS: 28° CLOUDY
 FOREMAN/TRUCK: N. MILLER/R. WEBB
 CONTROL POINT: 250
 NORTHING: 519256.9940
 EASTING: 2243795.5468
 ELEVATION: 958.52

RECORDED SIZE & TYPE: SIZE & TYPE CONFIRMED
 THERE WERE NOT ADDITIONAL UTILITIES IN THE TEST HOLE
 THE UTILITY WAS IN GOOD CONDITION
 COLOR OF RIBBON INSTALLED IN TEST HOLE: ORANGE
 PAVING THICKNESS AND TYPE: N/A
 SOIL TYPE: DIRT & GRAVEL
 FIELD REMARKS: N/A

EXISTING GRADE OF GROUND _____
 GRADE ELEVATION: 957.77
 SURVEYED ELEVATION TOP OF UTIL: 955.32
 SURVEYED ELEVATION BOT. OF UTIL (IF REQ.): _____
 SURVEYED SIZE AND TYPE OF UTIL: 4", STEEL
 DIRECTION & DEPTH OF UTILITY LINE: W to E, 2.45'
 UTILITY REMARKS: FIBER OPTIC MARKED BY OTHERS
 PHOTO IMAGE NUMBERS: 702



UTILITY LEGEND		
GAS — G	TEST HOLE	ELEC. P.B.
WATER — W	FIRE HYDRANT	POWER POLE
TELEPHONE — T	WATER VALVE	POWER/LIGHT
ELECTRIC — E	+G GAS MARKER	LIGHT POLE
SANITARY SEWER — SAN	+V GAS VALVE	SAN M.H.
STORM SEWER — S	O F.O. MARKER	TRAFFIC P.B.
FIBER OPTIC — FO	UNKNOWN P.B.	×
CABLE TV — CTV		
TRAFFIC — TR		

I, Chuck Price, do hereby certify that the positioning of the utility facilities provided utilizing the Quality Levels was performed in accordance with ODOT's SALS specifications.

CHARLES W. PRICE, JR.
 S-7825
 REGISTERED PROFESSIONAL SURVEYOR

Chuck Price, P.S.
 DATE 12/11/18



National Engineering & Architectural Services, INC. (NEAS)
 2800 Corporate Exchange Dr.
 Suite 240
 Columbus, Ohio 43231
 Office: (614) 714-0299
 Fax: (614) 714-0251

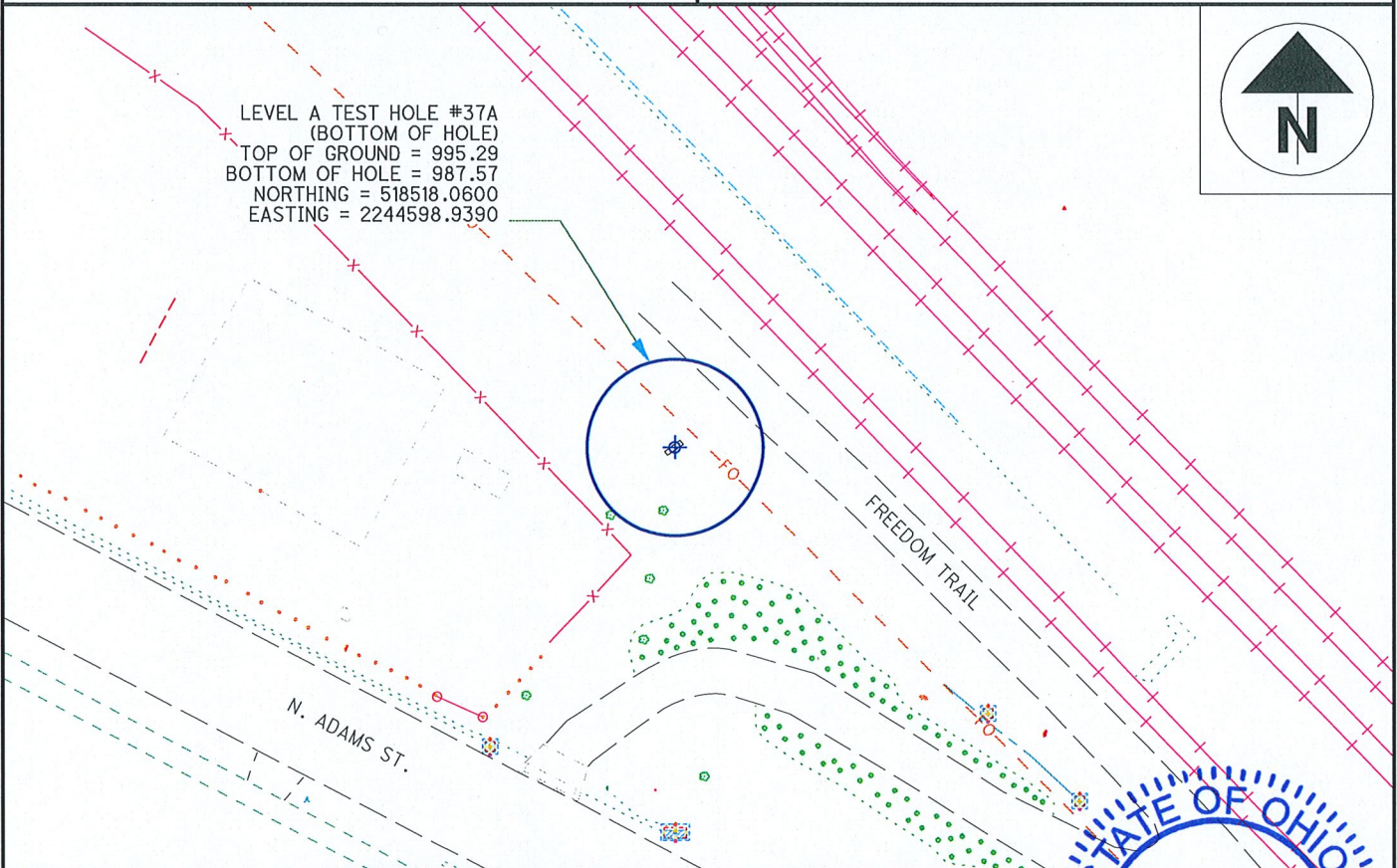
LEVEL A TEST HOLE CERTIFICATION FORM

PROJECT NAME: SUM-008-1.75 PID#91710
 PROJECT LOCATION (COUNTY, CITY, STATE): SUMMIT, AKRON, OHIO
 TEST HOLE LOCATION (PAV., SIDEWALK, ETC.): NEAR RR TRACKS
 PAVING CONDITION PRIOR TO WORK: N/A
 B.M. #: _____
 B.M. ELEV: _____
 DESCRIPTION: _____
 B.M. #: _____
 B.M. ELEV: _____
 DESCRIPTION: _____

PROJECT #: 16-0187
 TEST HOLE #: 37A
UTILITY TO BE LOCATED: FIBER OPTIC LINE (NOT FOUND)
 DATE OF EXCAVATION: 11/28/18
 WEATHER CONDITIONS: 28° SNOW
 FOREMAN/TRUCK: N. MILLER/R. WEBB/C. OTTEN/N. LOSONCY
 CONTROL POINT: 216
 NORTHING: 518942.3700
 EASTING: 2244106.4150
 ELEVATION: 999.39

RECORDED SIZE & TYPE: NOT CONFIRMED
 THERE WERE NOT ADDITIONAL UTILITIES IN THE TEST HOLE
 THE UTILITY N/A IN GOOD CONDITION
 COLOR OF RIBBON INSTALLED IN TEST HOLE: N/A
 PAVING THICKNESS AND TYPE: N/A
 SOIL TYPE: ROCK & DEBRIS
 FIELD REMARKS: TRENCHED 7.7 FEET DEEP BY 4 FOOT WIDE. NO UTILITIES FOUND.

EXISTING GRADE OF GROUND
 GRADE ELEVATION: 995.29
 SURVEYED ELEVATION BOT. OF HOLE: 987.57
 SURVEYED ELEVATION BOT. OF UTIL (IF REQ.): _____
 SURVEYED SIZE AND TYPE OF UTIL: N/A
 DIRECTION & DEPTH OF UTILITY LINE: 7.7' TO BOT. OF HOLE
 UTILITY REMARKS: NO MARKINGS, UNABLE TO ACQUIRE SIGNAL
 PHOTO IMAGE NUMBERS: 696-697

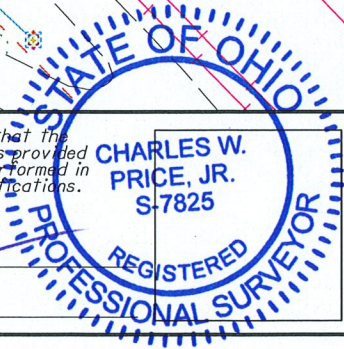


UTILITY LEGEND

GAS		G	TEST HOLE		ELEC. P.B.	
WATER		W	FIRE HYDRANT		POWER POLE	
TELEPHONE		T	WATER VALVE		POWER/LIGHT	
ELECTRIC		E	GAS MARKER		LIGHT POLE	
SANITARY SEWER		SAN	GAS VALVE		SAN M.H.	
STORM SEWER		SS	F.O. MARKER		TRAFFIC P.B.	
FIBER OPTIC		FO	UNKNOWN P.B.		GROUND SHOT	
CABLE TV		CTV				
TRAFFIC		TR				

I, Chuck Price, do hereby certify that the positioning of the utility facilities provided utilizing the Quality Levels was performed in accordance with ODOT's SALS specifications.

Chuck Price, P.S.
 DATE 12/11/18





National Engineering & Architectural Services, INC. (NEAS)
 2800 Corporate Exchange Dr.
 Suite 240
 Columbus, Ohio 43231
 Office: (614) 714-0299
 Fax: (614) 714-0251

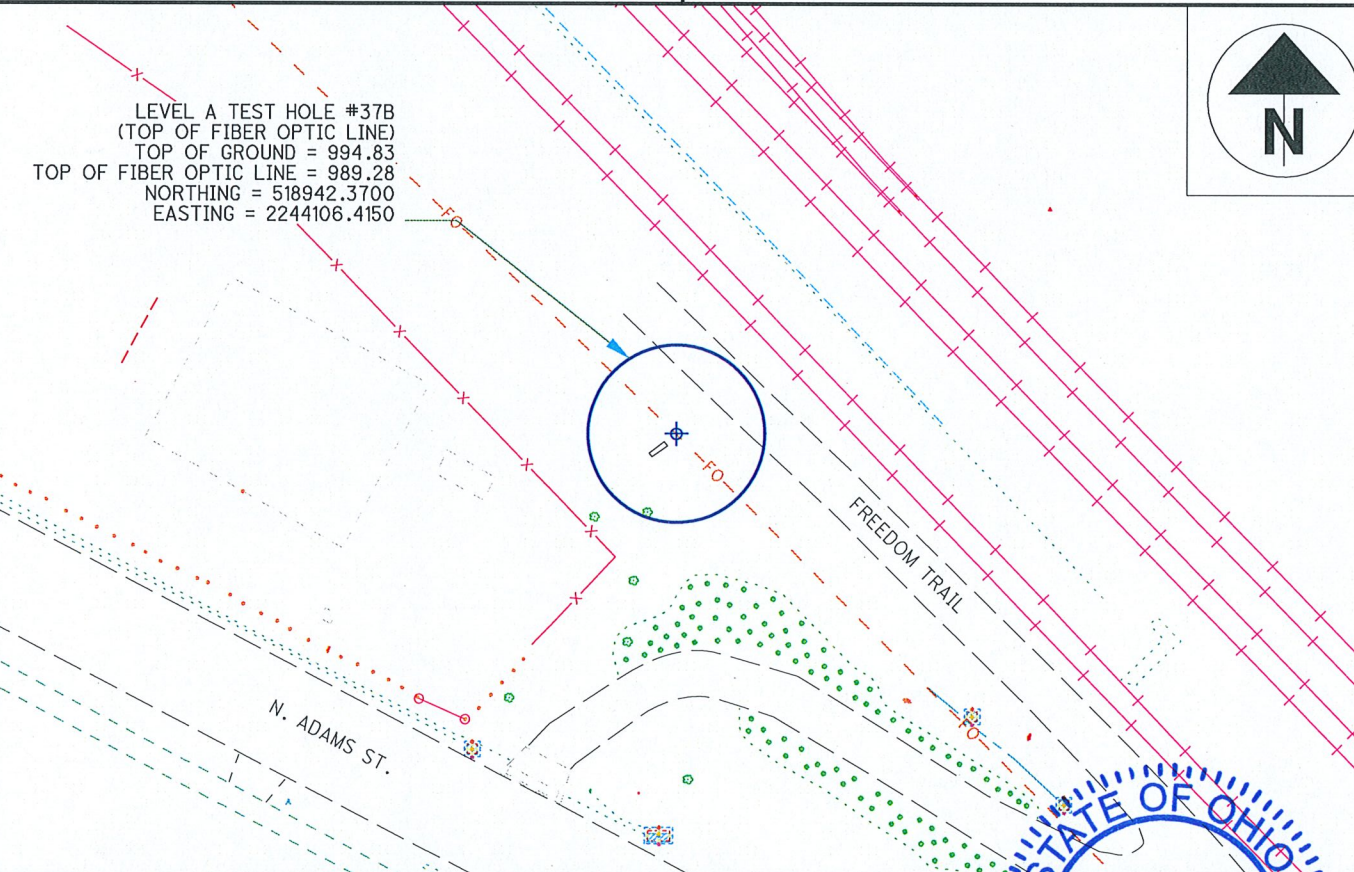
LEVEL A TEST HOLE CERTIFICATION FORM

PROJECT NAME: SUM-008-1,75 PID#91710
 PROJECT LOCATION (COUNTY, CITY, STATE): SUMMIT, AKRON, OHIO
 TEST HOLE LOCATION (PAV., SIDEWALK, ETC): NEAR RR TRACKS
 PAVING CONDITION PRIOR TO WORK: N/A
 B.M. #: _____
 B.M. ELEV: _____
 DESCRIPTION: _____
 B.M. #: _____
 B.M. ELEV: _____
 DESCRIPTION: _____

PROJECT #: 16-0187
 TEST HOLE #: 37B
UTILITY TO BE LOCATED: FIBER OPTIC LINE (FOUND)
 DATE OF EXCAVATION: 11/29/18
 WEATHER CONDITIONS: 20° CLOUDY
 FOREMAN/TRUCK: N. MILLER/R. WEBB/N. LOSONCY
 CONTROL POINT: 216
 NORTHING: 518942.3700
 EASTING: 2244106.4150
 ELEVATION: 999.39

RECORDED SIZE & TYPE: SIZE & TYPE CONFIRMED
 THERE WERE NOT ADDITIONAL UTILITIES IN THE TEST HOLE
 THE UTILITY WAS IN GOOD CONDITION
 COLOR OF RIBBON INSTALLED IN TEST HOLE: ORANGE
 PAVING THICKNESS AND TYPE: N/A
 SOIL TYPE: DIRT & ROCK
 FIELD REMARKS: FIBER FOUND NORTH OF STAKEOUT

EXISTING GRADE OF GROUND _____
 GRADE ELEVATION: 994.83
 SURVEYED ELEVATION TOP OF UTIL: 989.28
 SURVEYED ELEVATION BOT. OF UTIL (IF REQ.): _____
 SURVEYED SIZE AND TYPE OF UTIL: 3", ALUMINUM
 DIRECTION & DEPTH OF UTILITY LINE: NW to SE, 5.55'
 UTILITY REMARKS: AT&T FIBER OPTIC MARKED BY OTHERS
 PHOTO IMAGE NUMBERS: 703



UTILITY LEGEND		
GAS	G	TEST HOLE
WATER	W	FIRE HYDRANT
TELEPHONE	T	WATER VALVE
ELECTRIC	E	GAS MARKER
SANITARY SEWER	SAN	GAS VALVE
STORM SEWER	SS	F.O. MARKER
FIBER OPTIC	FO	UNKNOWN P.B.
CABLE TV	CTV	
TRAFFIC	TR	
		ELEC. P.B.
		POWER POLE
		POWER/LIGHT
		LIGHT POLE
		SAN M.H.
		TRAFFIC P.B.
		GROUND SHOT

I, Chuck Price, do hereby certify that the positioning of the utility facilities provided utilizing the Quality Levels was performed in accordance with ODOT's SALS specifications.

CHARLES W. PRICE, JR.
 S-7825
 REGISTERED PROFESSIONAL SURVEYOR

Chuck Price, P.S.
 DATE 12/11/18