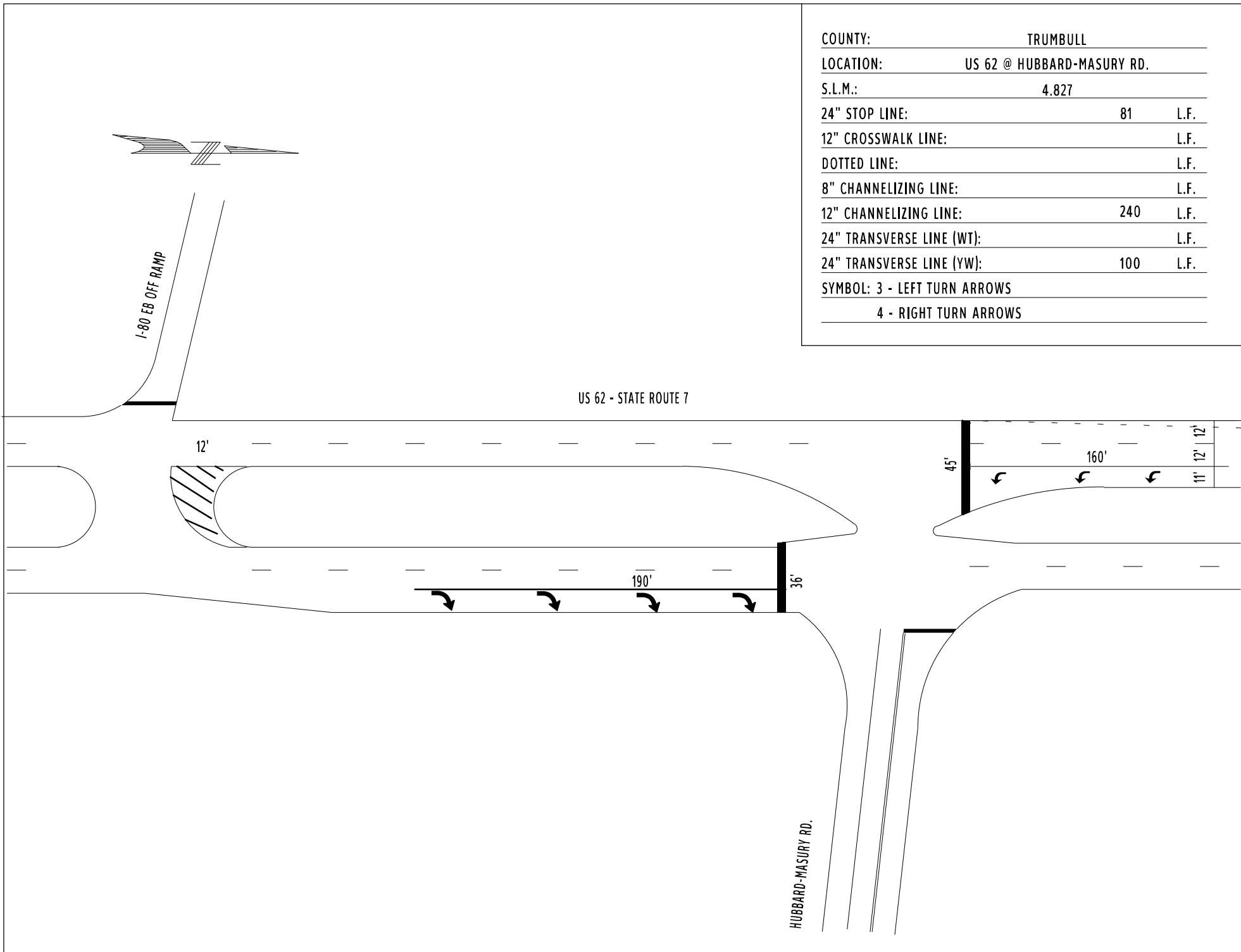
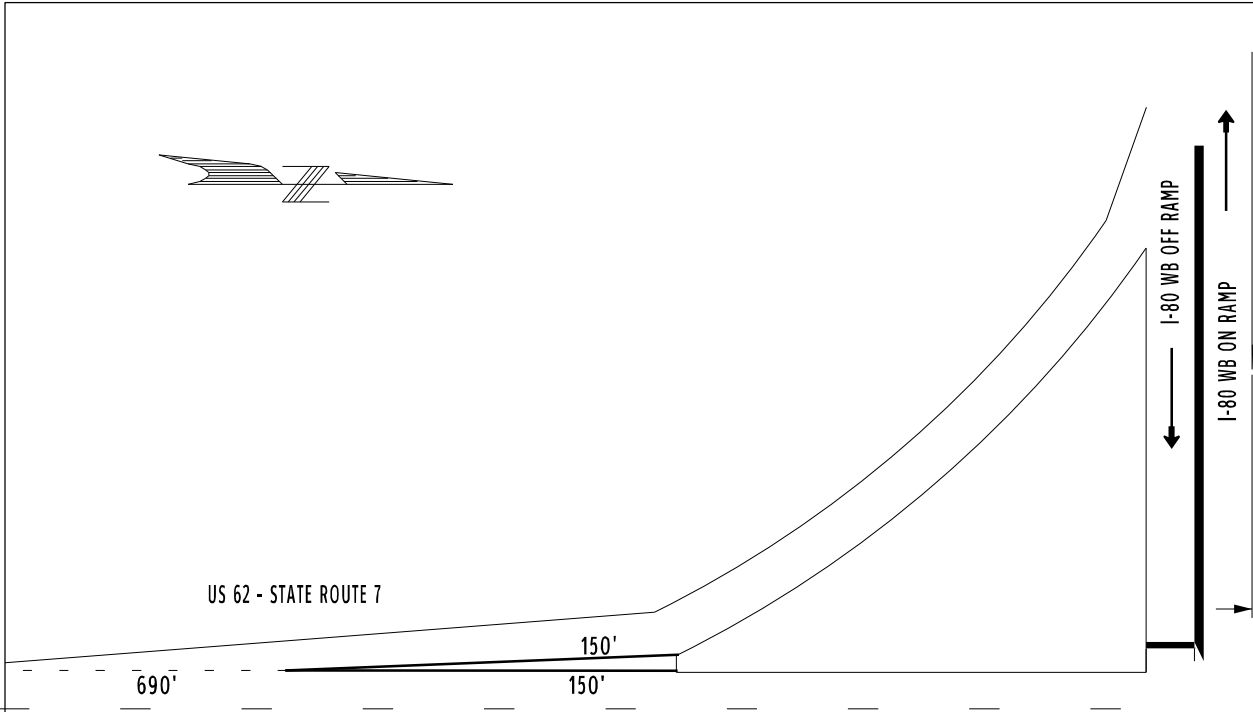
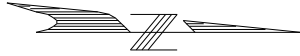
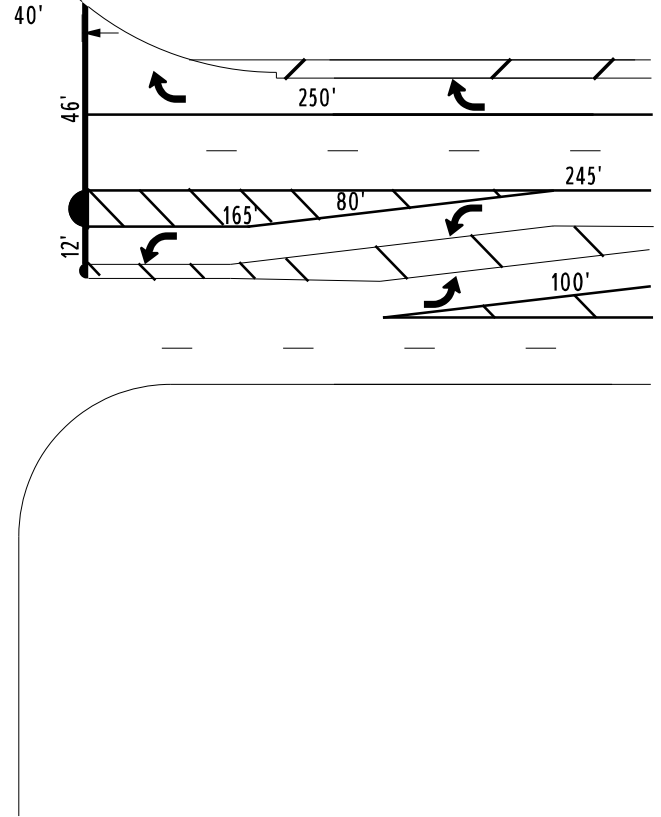
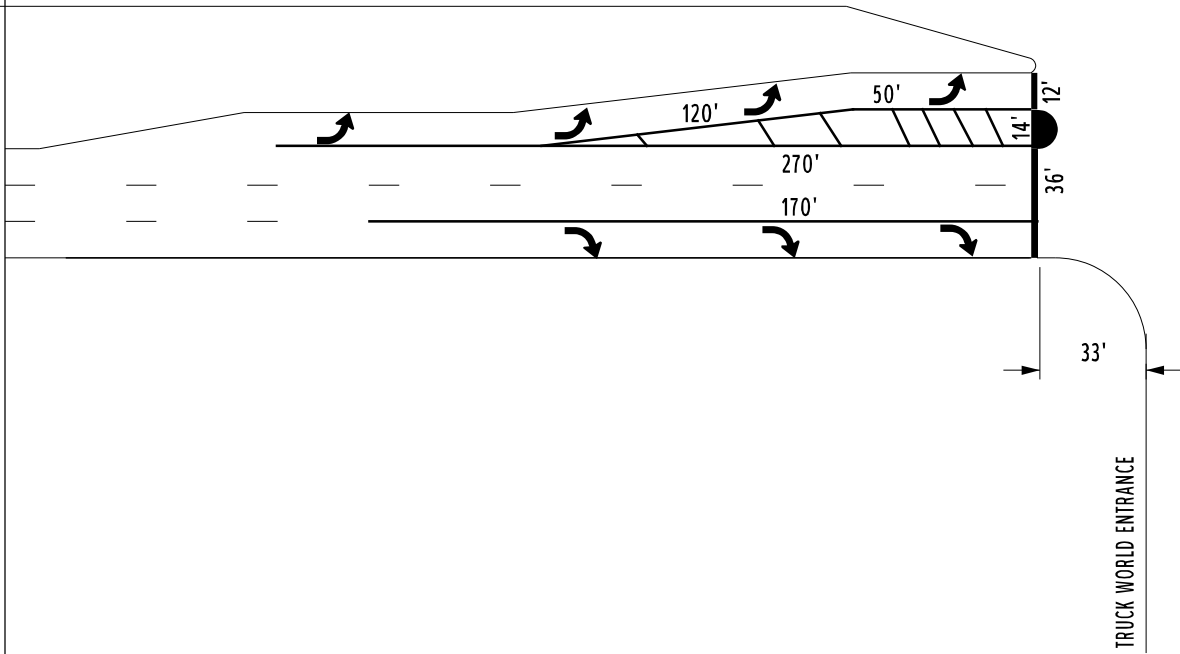


COUNTY:	TRUMBULL	
LOCATION:	US 62 @ HUBBARD-MASURY RD.	
S.L.M.:	4.827	
24" STOP LINE:	81	L.F.
12" CROSSWALK LINE:		L.F.
DOTTED LINE:		L.F.
8" CHANNELIZING LINE:		L.F.
12" CHANNELIZING LINE:	240	L.F.
24" TRANSVERSE LINE (WT):		L.F.
24" TRANSVERSE LINE (YW):	100	L.F.
SYMBOL: 3 - LEFT TURN ARROWS		
4 - RIGHT TURN ARROWS		





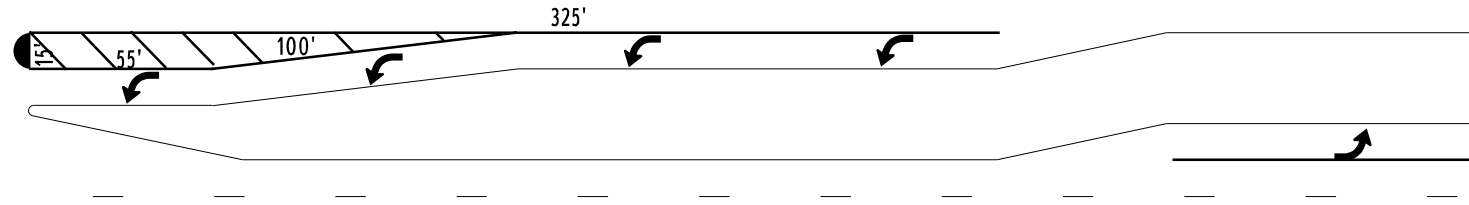
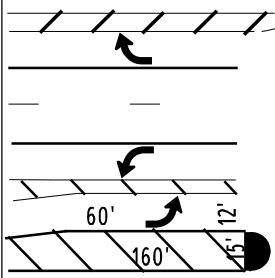
COUNTY:	TRUMBULL		
LOCATION:	US 62 @ I-80 WB RAMPS		
S.L.M.:	5.027		
24" STOP LINE:	106	L.F.	
12" CROSSWALK LINE:		L.F.	
DOTTED LINE:	690	L.F.	
8" CHANNELIZING LINE:		L.F.	
12" CHANNELIZING LINE:	1670	L.F.	
24" TRANSVERSE LINE (WT):	245	L.F.	
24" TRANSVERSE LINE (YW):	40	L.F.	
SYMBOL:	2 - 88 S.F. ISLAND MARKINGS		
	7 - LEFT TURN ARROWS, 5 - RIGHT TURN ARROWS		





COMMERCE DR. / TWP. 796

US 62 - STATE ROUTE 7



COUNTY:	TRUMBULL	
LOCATION:	US 62 @ COMMERCE DR. / TWP. 796	
S.L.M.:	5.099	
24" STOP LINE:		L.F.
12" CROSSWALK LINE:		L.F.
DOTTED LINE:		L.F.
8" CHANNELIZING LINE:		L.F.
12" CHANNELIZING LINE:	700	L.F.
24" TRANSVERSE LINE (WT):	220	L.F.
24" TRANSVERSE LINE (YW):	45	L.F.
SYMBOL: 2 - 88 S.F. ISLAND MARKINGS		
	7 - LEFT TURN ARROWS, 1 - RIGHT TURN ARROW	



COUNTY:	TRUMBULL	
LOCATION:	US 62 @ FLYING J	
S.L.M.:	5.258	
24" STOP LINE:	36	L.F.
12" CROSSWALK LINE:		L.F.
DOTTED LINE:		L.F.
8" CHANNELIZING LINE:		L.F.
12" CHANNELIZING LINE:	725	L.F.
24" TRANSVERSE LINE (WT):	65	L.F.
24" TRANSVERSE LINE (YW):		L.F.
SYMBOL: 6 - LEFT TURN ARROWS		
57 S.F. ISLAND MARKINGS		

US 62 - STATE ROUTE 7

FLYING "J"

590'

75'

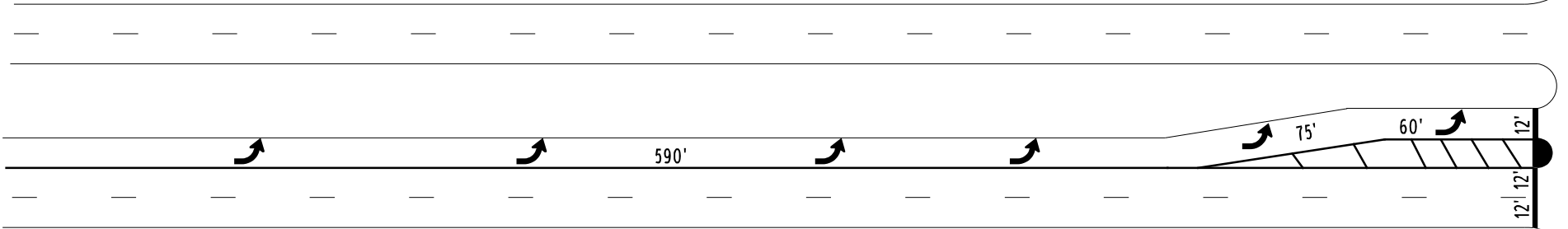
60'

12'

12'

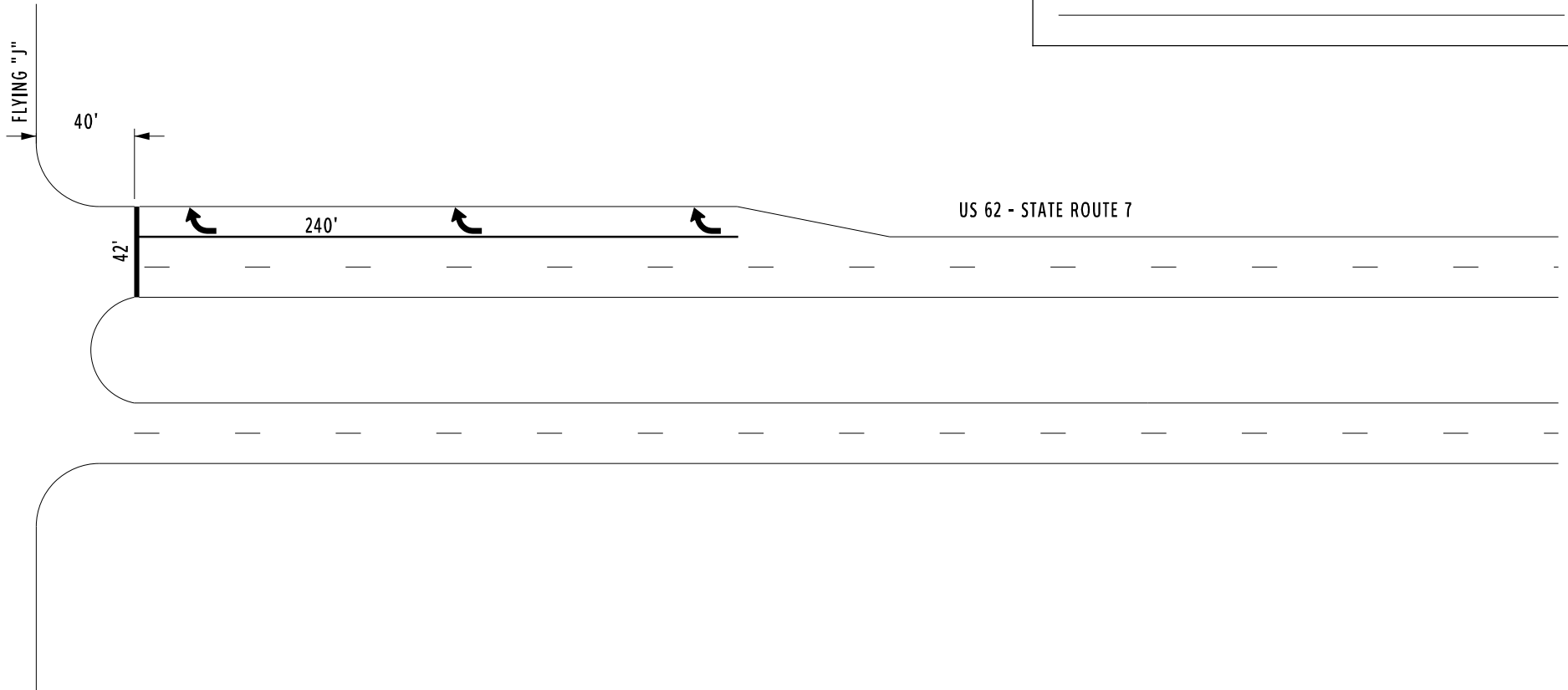
12'

36'



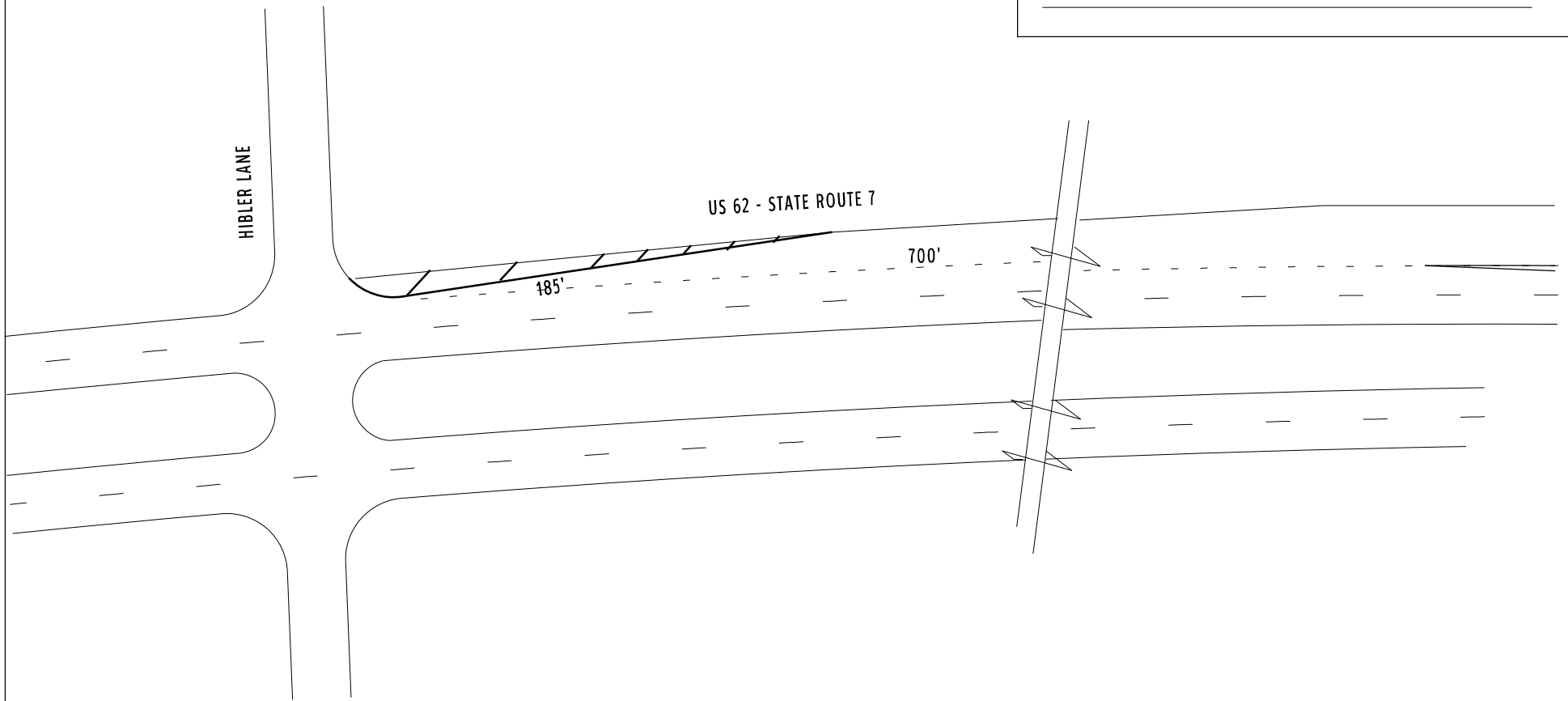


COUNTY:	TRUMBULL	
LOCATION:	US 62 @ FLYING J	
S.L.M.:	5.258	
24" STOP LINE:	42	L.F.
12" CROSSWALK LINE:		L.F.
DOTTED LINE:		L.F.
8" CHANNELIZING LINE:		L.F.
12" CHANNELIZING LINE:	240	L.F.
24" TRANSVERSE LINE (WT):		L.F.
24" TRANSVERSE LINE (YW):		L.F.
SYMBOL: 3 - RIGHT TURN ARROWS		





COUNTY:	TRUMBULL
LOCATION:	US 62 / S.R. 7 @ HIBLER LN.
S.L.M.:	5.618
24" STOP LINE:	L.F.
12" CROSSWALK LINE:	L.F.
DOTTED LINE:	L.F.
8" CHANNELIZING LINE:	L.F.
12" CHANNELIZING LINE:	185 L.F.
24" TRANSVERSE LINE (WT):	90 L.F.
24" TRANSVERSE LINE (YW):	L.F.
SYMBOL:	



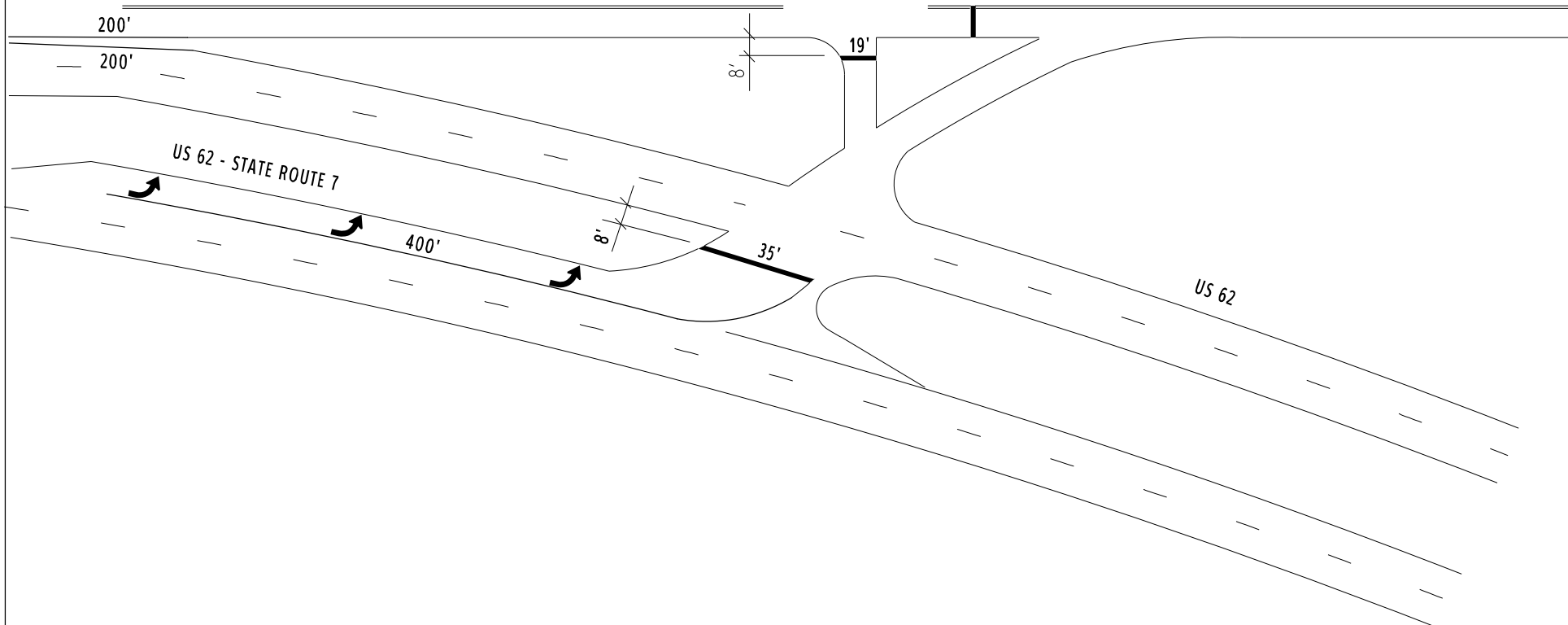


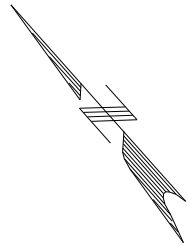
COUNTY:	TRUMBULL	
LOCATION:	US 62 @ S.R. 7	
S.L.M.:	5.678	
24" STOP LINE:	54	L.F.
12" CROSSWALK LINE:		L.F.
DOTTED LINE:		L.F.
8" CHANNELIZING LINE:		L.F.
12" CHANNELIZING LINE:	800	L.F.
24" TRANSVERSE LINE (WT):		L.F.
24" TRANSVERSE LINE (YW):		L.F.
SYMBOL:		

YORK LN.

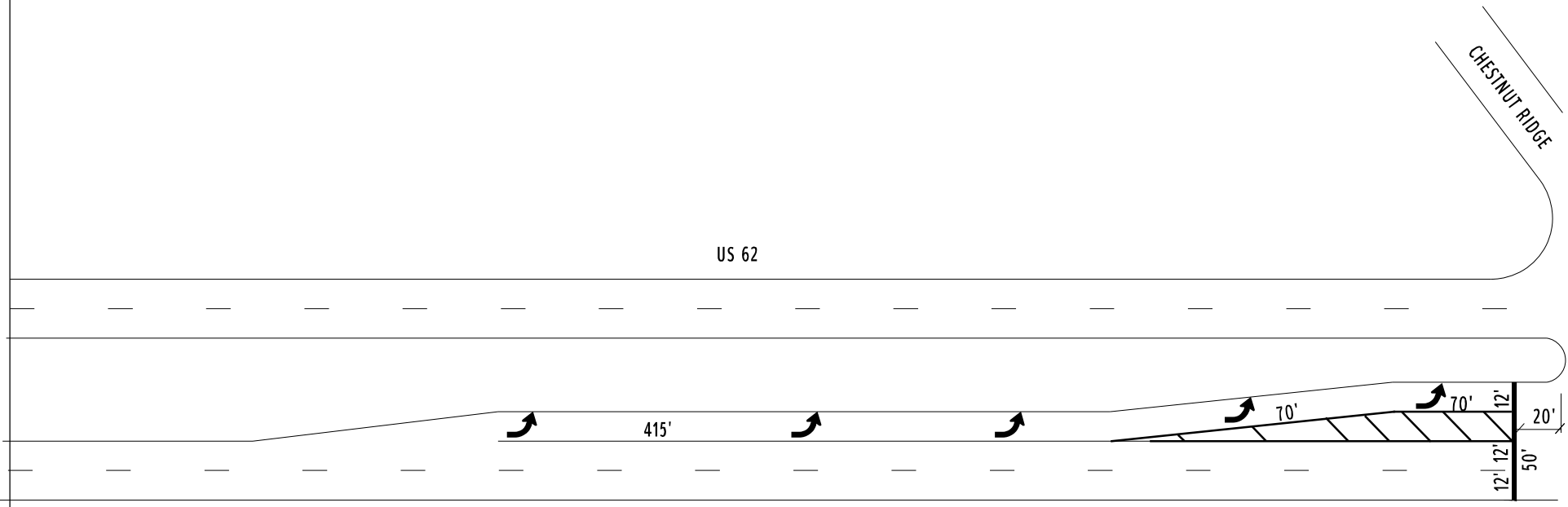
STATE ROUTE 7

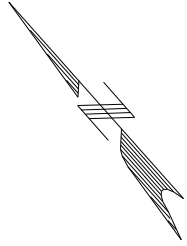
STATE ROUTE 7





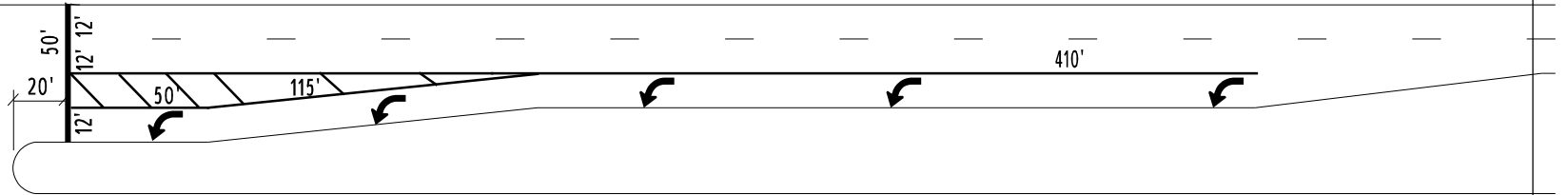
COUNTY:	TRUMBULL	
LOCATION:	US 62 @ CHESTNUT RIDGE RD.	
S.L.M.:	6.225	
24" STOP LINE:	50	L.F.
12" CROSSWALK LINE:		L.F.
DOTTED LINE:		L.F.
8" CHANNELIZING LINE:		L.F.
12" CHANNELIZING LINE:	555	L.F.
24" TRANSVERSE LINE (WT):	150	L.F.
24" TRANSVERSE LINE (YW):		L.F.
SYMBOL: 5 - LEFT TURN ARROWS		





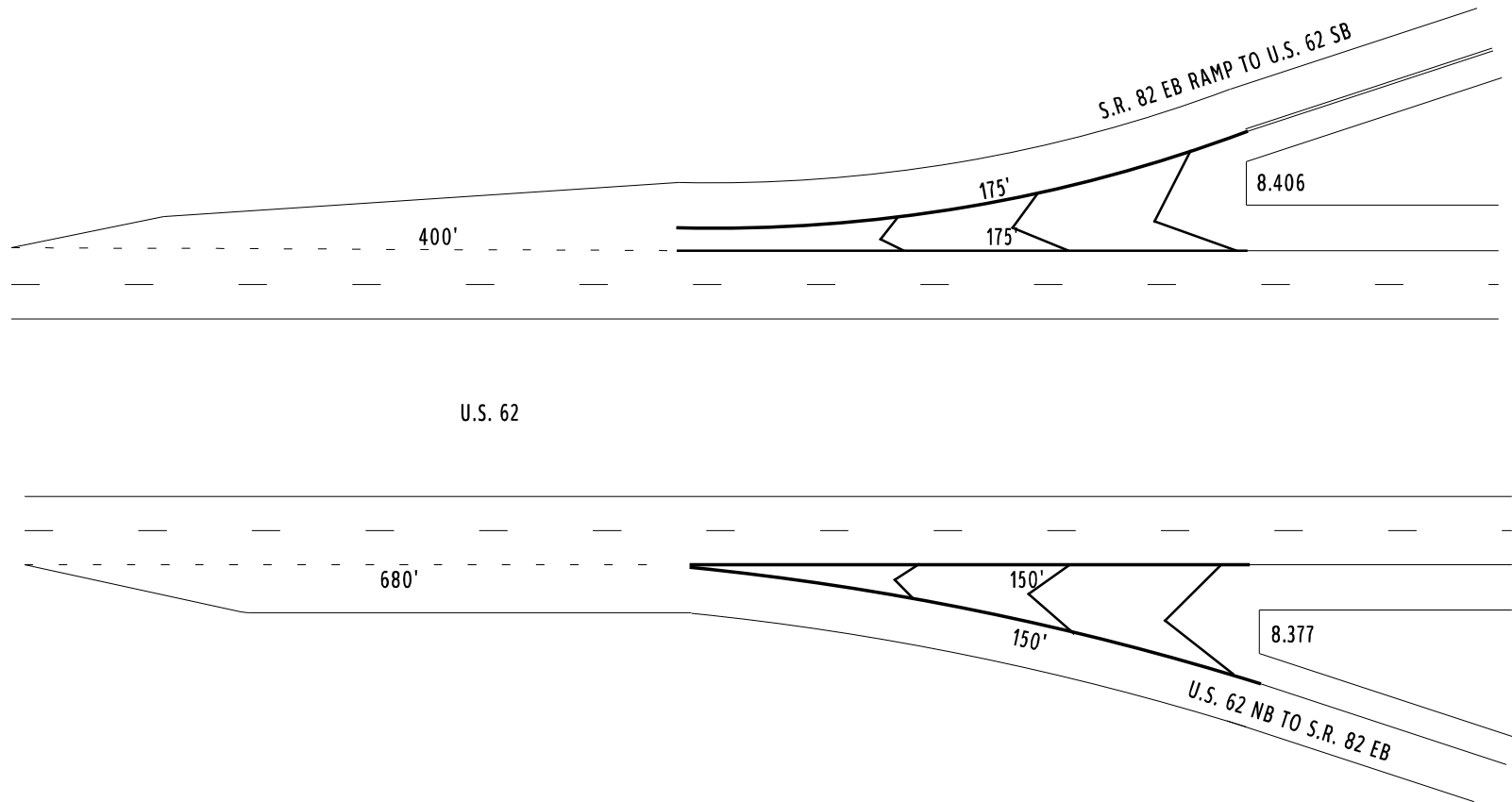
COUNTY:	TRUMBULL	
LOCATION:	US 62 @ CHESTNUT RIDGE RD.	
S.L.M.:	6.225	
24" STOP LINE:	50	L.F.
12" CROSSWALK LINE:		L.F.
DOTTED LINE:		L.F.
8" CHANNELIZING LINE:		L.F.
12" CHANNELIZING LINE:	575	L.F.
24" TRANSVERSE LINE (WT):	60	L.F.
24" TRANSVERSE LINE (YW):		L.F.
SYMBOL: 5 - LEFT TURN ARROWS		

US 62

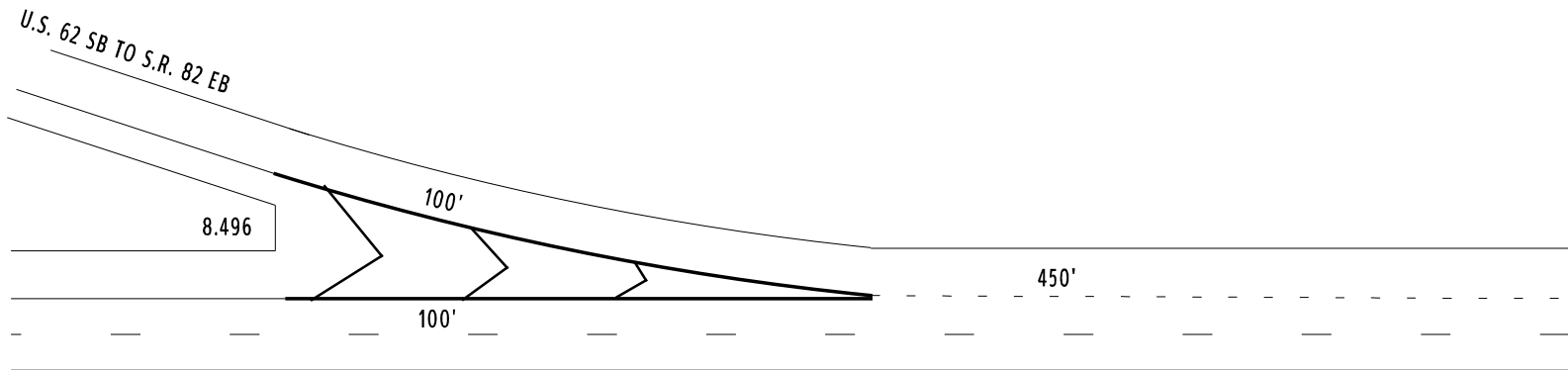


CHESTNUT RIDGE RD.

COUNTY:	TRUMBULL	
LOCATION:	US 62 GORES @ S.R. 82	
S.L.M.:	8.40	
24" STOP LINE:		L.F.
12" CROSSWALK LINE:		L.F.
DOTTED LINE:	1080	L.F.
8" CHANNELIZING LINE:		L.F.
12" CHANNELIZING LINE:	650	L.F.
24" TRANSVERSE LINE (WT):		L.F.
24" TRANSVERSE LINE (YW):		L.F.
SYMBOL:		



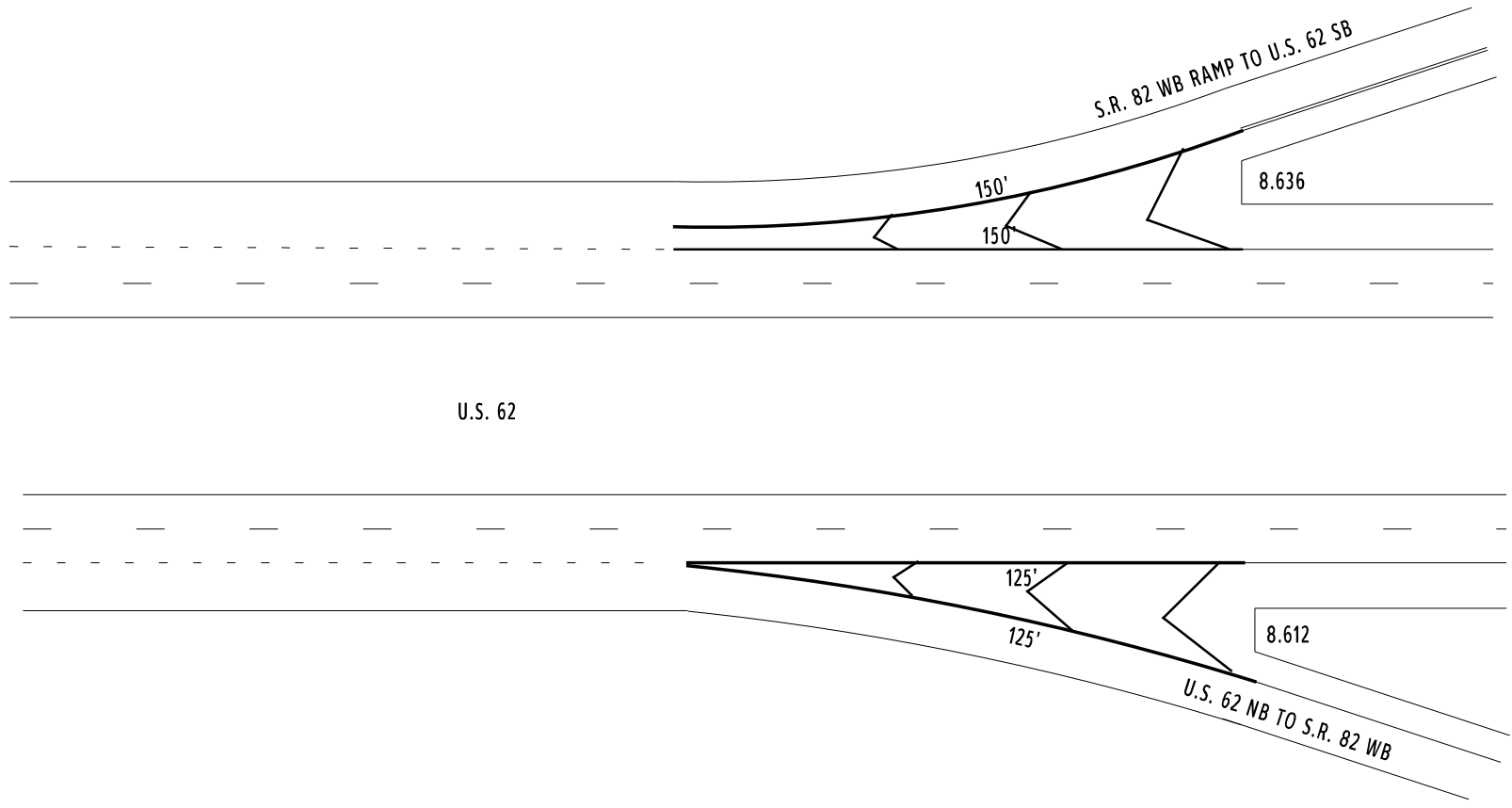
COUNTY:	TRUMBULL	
LOCATION:	US 62 GORES @ S.R. 82	
S.I.M.:	8.496	
24" STOP LINE:		L.F.
12" CROSSWALK LINE:		L.F.
DOTTED LINE:	900	L.F.
8" CHANNELIZING LINE:		L.F.
12" CHANNELIZING LINE:	520	L.F.
24" TRANSVERSE LINE (WT):		L.F.
24" TRANSVERSE LINE (YW):		L.F.
SYMBOL:		



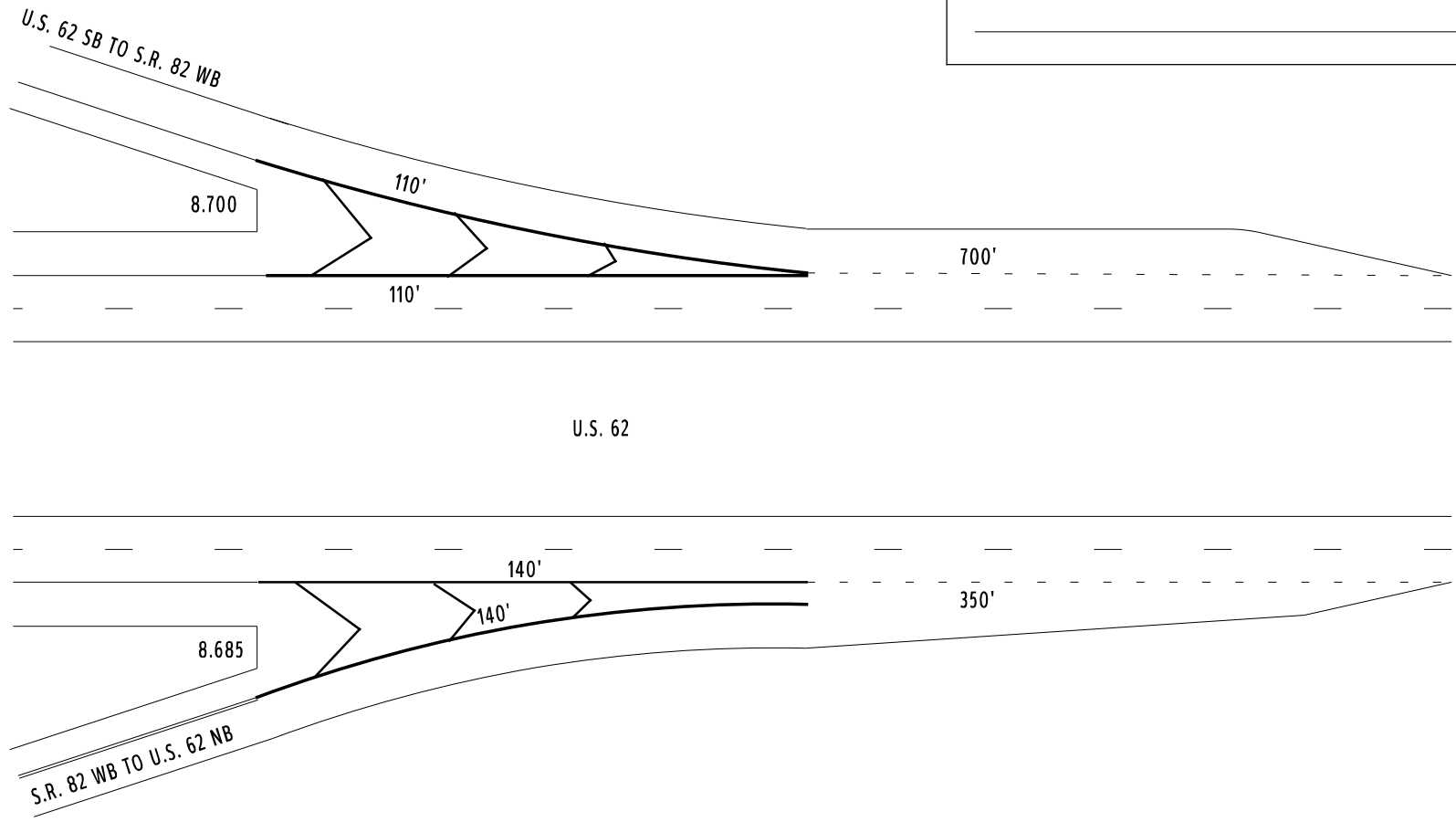
U.S. 62



COUNTY:	TRUMBULL	
LOCATION:	US 62 GORES @ S.R. 82	
S.L.M.:	8.636	
24" STOP LINE:		L.F.
12" CROSSWALK LINE:		L.F.
DOTTED LINE:		L.F.
8" CHANNELIZING LINE:		L.F.
12" CHANNELIZING LINE:	550	L.F.
24" TRANSVERSE LINE (WT):		L.F.
24" TRANSVERSE LINE (YW):		L.F.
SYMBOL:		



COUNTY:	TRUMBULL	
LOCATION:	US 62 GORES @ S.R. 82	
S.L.M.:	8.700	
24" STOP LINE:		L.F.
12" CROSSWALK LINE:		L.F.
DOTTED LINE:	1050	L.F.
8" CHANNELIZING LINE:		L.F.
12" CHANNELIZING LINE:	500	L.F.
24" TRANSVERSE LINE (WT):		L.F.
24" TRANSVERSE LINE (YW):		L.F.
SYMBOL:		



COUNTY:	TRUMBULL	
LOCATION:	US 62 @ PENNSYLVANIA STATE LINE	
S.L.M.:	9.260	
24" STOP LINE:	40	L.F.
12" CROSSWALK LINE:	164	L.F.
DOTTED LINE:		L.F.
8" CHANNELIZING LINE:		L.F.
12" CHANNELIZING LINE:	200	L.F.
24" TRANSVERSE LINE (WT):		L.F.
24" TRANSVERSE LINE (YW):		L.F.
SYMBOL: 1 - LEFT TURN ARROW, 1 - THRU ARROW		
1 - RIGHT TURN ARROW		

