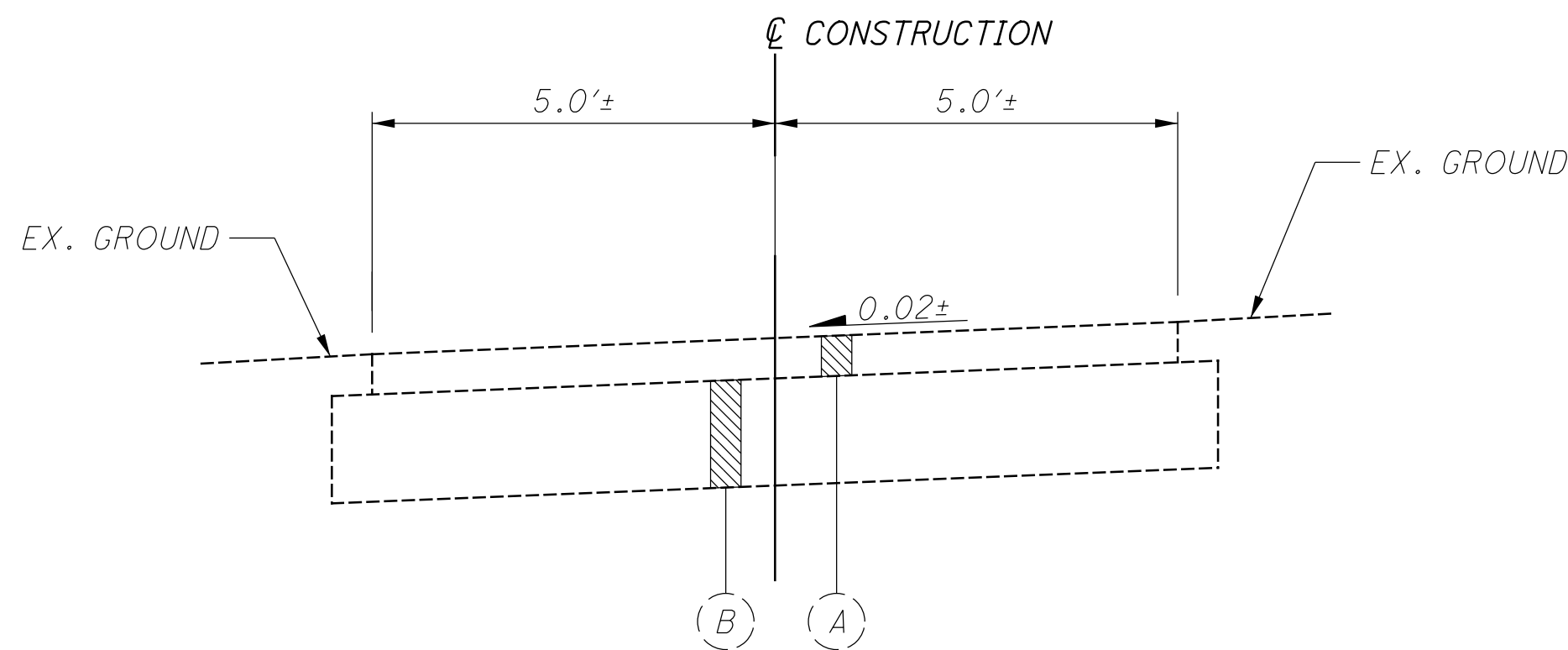


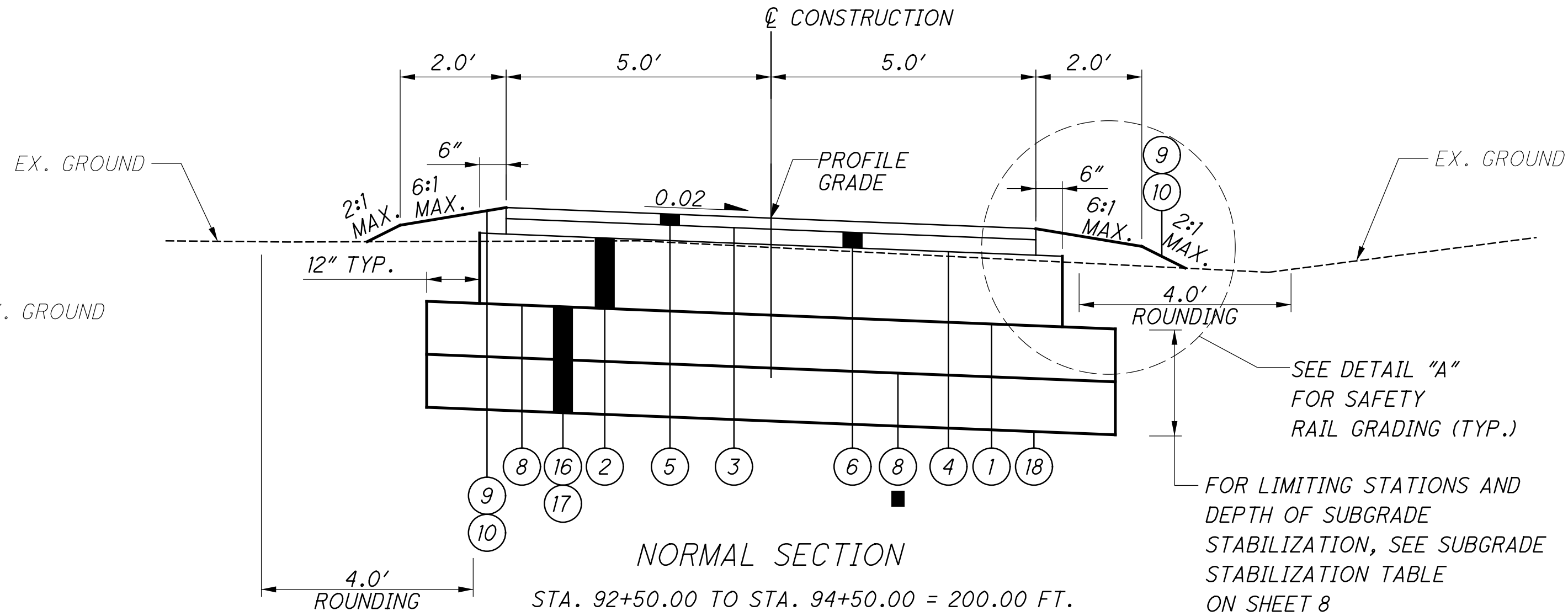
NOTE

1. NO WORK IN CONTRACT FROM STA. 60+90.75 TO STA. 82+99.45.
STATIONING AND EXISTING CONDITIONS SHOWN IN PLANS FOR
INFORMATION ONLY.



EXISTING SECTION - NILES GREENWAY

STA. 10+00.00 TO STA. 10+18.74 = 18.74 FT.

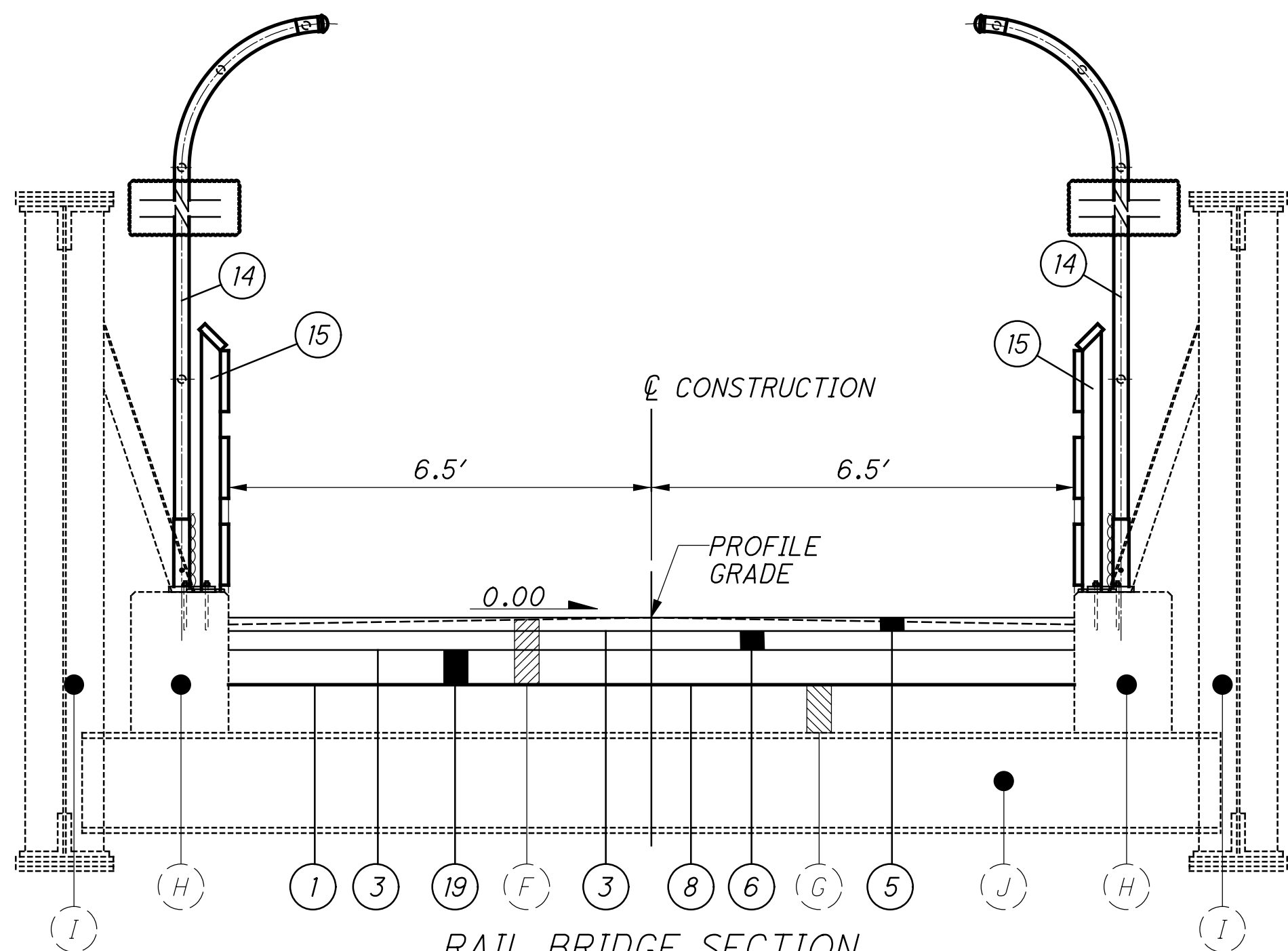


NORMAL SECTION

STA. 92+50.00 TO STA. 94+50.00 = 200.00 FT.
*** STA. 95+00.00 TO STA. 102+25.00 = 736.75 FT.
STA. 103+75.00 TO STA. 107+50.00 = 375.00 FT.
**** STA. 158+75.00 TO STA. 167+50.00 = 876.74 FT.
STA. 177+00.00 TO STA. 181+50.00 = 450.00 FT.
***** STA. 212+75.00 TO STA. 220+25.02 = 750.02 FT.

*** (STA. EQUATION - STA. 95+80.87 BK.
= STA. 95+74.60 AHD.)
*** (STA. EQUATION - STA. 97+46.07 BK.
= STA. 97+40.59 AHD.)

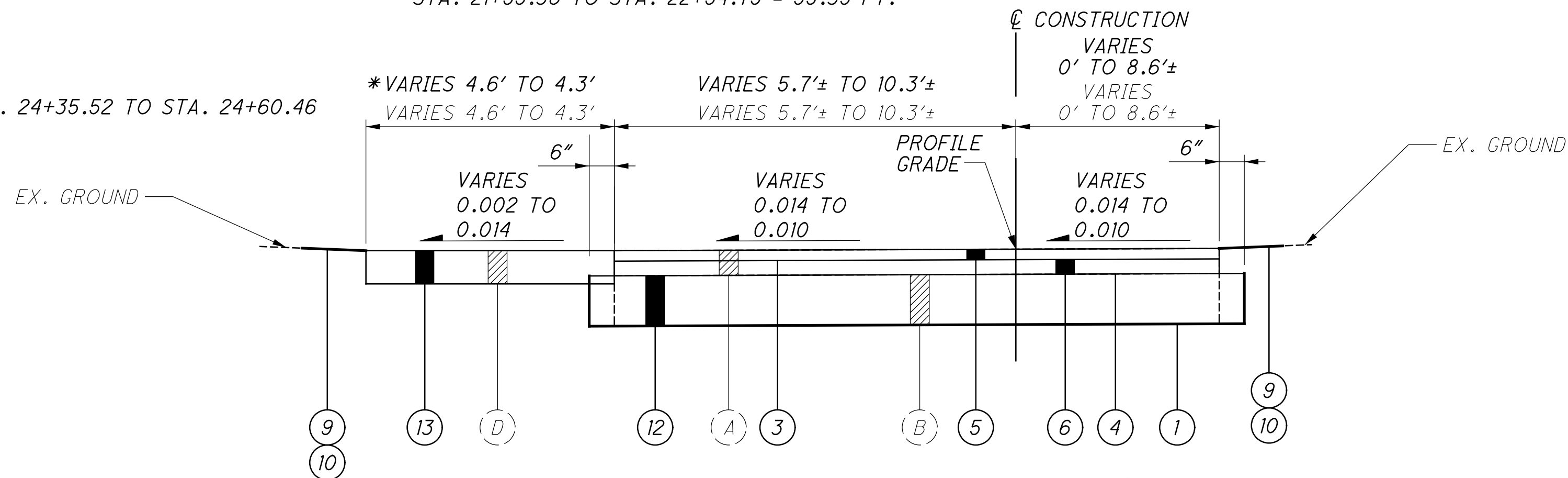
**** (STA. EQUATION - STA. 166+74.98 BK.
= STA. 166+73.24 AHD.)
**** (STA. EQUATION - 220+25.02 BK.
= STA. 214+91.75 AHD.)



RAIL BRIDGE SECTION

STA. 11+90.06 TO STA. 12+72.09 = 82.03 FT.
STA. 21+55.36 TO STA. 22+54.75 = 99.39 FT.

*APPLIES TO STA. 24+35.52 TO STA. 24+60.46



SHARED ROAD SECTION - WILLIAMS ST.

STA. 24+27.56 TO STA. 25+00.00 = 72.44 FT.
(SEE SHEET NO. 94 FOR INTERSECTION DETAILS)

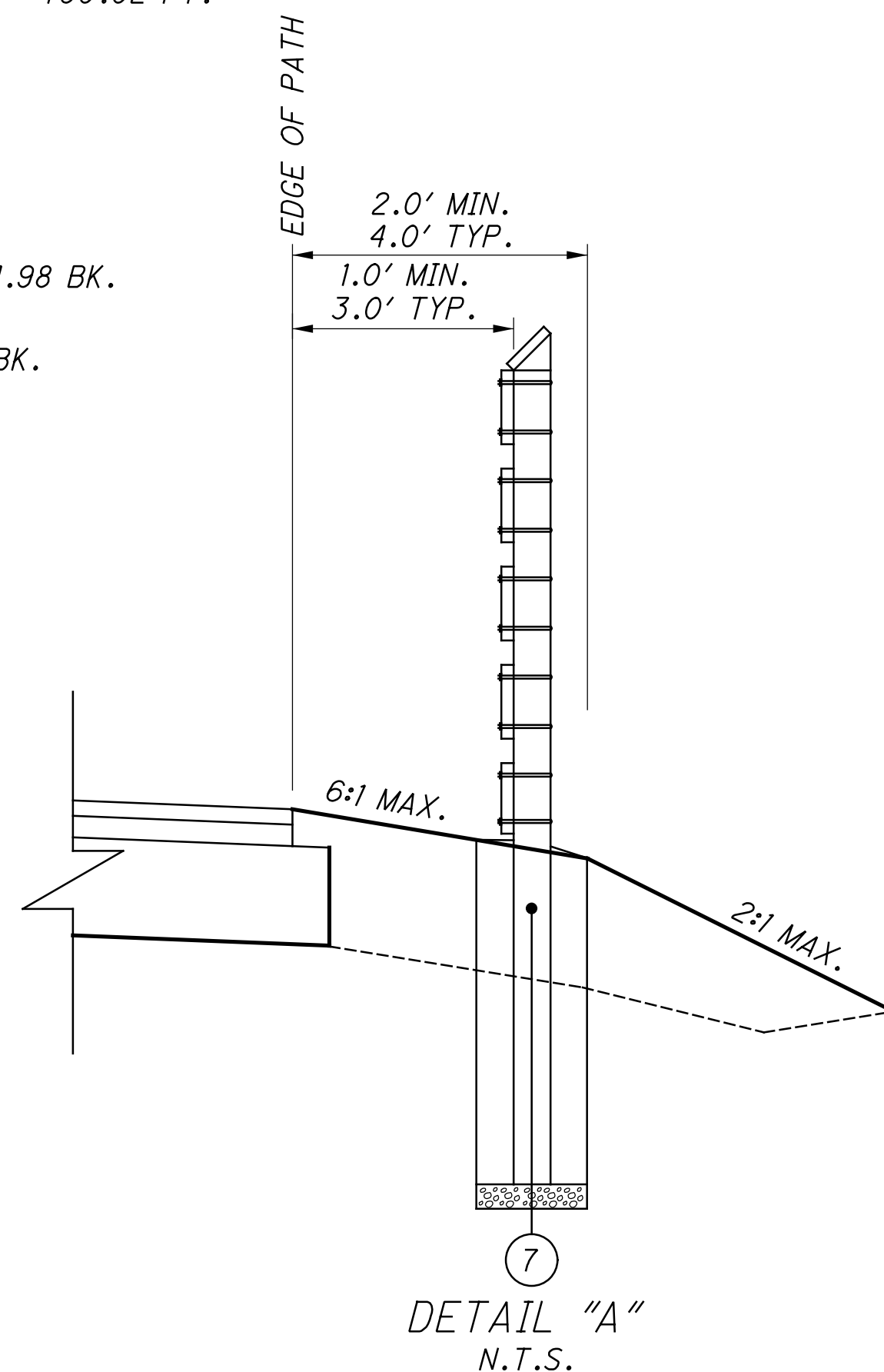
NOTE: TRANSITION CROSS SLOPE CHANGES OF PAVEMENT IN 10' LENGTH

PROPOSED LEGEND

- ITEM 204 - SUBGRADE COMPACTION
- ITEM 304 - AGGREGATE BASE (T=8")
- ITEM 407 - TACK COAT (0.055 GAL/SY)
- ITEM 408 - PRIME COAT (0.40 GAL/SY)
- ITEM 441 - 1 1/4" ASPHALT CONCRETE SURFACE COURSE, TYPE 1, (448), AS PER PLAN (PG64-22)
- ITEM 441 - 1 3/4" ASPHALT CONCRETE INTERMEDIATE COURSE, TYPE 2, (448)
- ITEM 607 - FENCE, MISC.: WOOD FENCE
- ITEM 204 - GEOGRID
- ITEM 659 - SEEDING AND MULCHING
- ITEM 659 - TOPSOIL (T=4")
- ITEM 452 - 8" NON-REINFORCED CONCRETE PAVEMENT, CLASS QC 1P
- ITEM 304 - AGGREGATE BASE (T=6")
- ITEM 608 - 4" CONCRETE WALK
- ITEM 607 - VANDAL PROTECTION FENCE, 12' CURVED, COATED FABRIC, AS PER PLAN
- ITEM 517 - RAILING, TIMBER, AS PER PLAN
- ITEM 204 - EXCAVATION OF SUBGRADE
- ITEM 204 - GRANULAR MATERIAL, TYPE B
- ITEM 204 - GEOTEXTILE FABRIC
- ITEM 301 - ASPHALT CONCRETE BASE, PG64-22, (449) (T=8")

EXISTING LEGEND

- EXISTING ASPHALT CONCRETE PAVEMENT
- EXISTING BASE
- EXISTING CONCRETE CURB
- EXISTING CONCRETE WALK
- EXISTING GUARDRAIL
- EXISTING AGGREGATE BALLAST
- EXISTING CONCRETE BRIDGE DECK
- EXISTING CONCRETE PEDESTAL
- EXISTING RIVETED STEEL BUILT-UP GIRDER
- EXISTING FLOOR BEAM



DETAIL "A"
N.T.S.

APPLIES TO:

STA. 10+58, RT. TO STA. 11+82, RT.
STA. 12+81, LT. TO STA. 17+69, LT.
STA. 15+25, RT. TO STA. 18+92, RT.
STA. 22+58, LT. TO STA. 24+12, LT.
STA. 93+75, RT. TO STA. 95+25, RT.
STA. 97+58, LT. TO STA. 101+08, LT.
STA. 102+08, RT. TO STA. 103+92, RT.
STA. 122+81, RT. TO STA. 123+94, RT.
STA. 130+83, RT. TO STA. 131+57, RT.
STA. 137+87, RT. TO STA. 140+47, RT.
STA. 168+83, LT. TO STA. 172+17, LT.
STA. 168+83, RT. TO STA. 172+17, RT.
STA. 204+83, RT. TO STA. 207+17, RT.

SHEET NUM.													PART.	ITEM	ITEM EXT	GRAND TOTAL	UNIT	DESCRIPTION	SEE SHEET NO.	CALCULATED MJT	CHECKED	CJT
OFFICE CALCS	10	11	14	18	19	95	99	111	112	113	114	122	01/CMQ									
					298								298	611	04600	298	FT	DRAINAGE				
					209								209	611	04900	209	FT	12" CONDUIT, TYPE D				
					19								19	611	06100	19	FT	15" CONDUIT, TYPE C				
					220								220	611	06400	220	FT	15" CONDUIT, TYPE D				
					35								35	611	07600	35	FT	18" CONDUIT, TYPE C				
					88								88	611	07900	88	FT	18" CONDUIT, TYPE D				
					5								5	611	10600	5	FT	24" CONDUIT, TYPE C , 706.02				
					25								25	611	10900	25	FT	24" CONDUIT, TYPE D				
					47								47	611	10900	47	FT	24" CONDUIT, TYPE D , 706.02				
					54								54	611	16200	54	FT	36" CONDUIT, TYPE A				
					5								5	611	16600	5	FT	36" CONDUIT, TYPE C				
					96								96	611	16900	96	FT	36" CONDUIT, TYPE D				
					28								28	611	19200	28	FT	42" CONDUIT, TYPE A				
	50												50	611	97400	50	FT	CONDUIT, MISC.: TYPE C FOR DRAINAGE DISCHARGE CONTINUANCE	10			
	50												50	611	97400	50	FT	CONDUIT, MISC.: TYPE E FOR DRAINAGE DISCHARGE CONTINUANCE	10			
	50												50	611	97400	50	FT	CONDUIT, MISC.: TYPE F FOR DRAINAGE DISCHARGE CONTINUANCE	10			
					1								1	611	98470	1	EACH	CATCH BASIN, NO. 2-2B				
					1								1	611	98540	1	EACH	CATCH BASIN, NO. 2-4				
					1								1	611	98630	1	EACH	CATCH BASIN ADJUSTED TO GRADE				
		12											12	611	98644	12	EACH	CATCH BASIN GRATE				
					3								3	611	99574	3	EACH	MANHOLE, NO. 3				
					1								1	611	99574	1	EACH	MANHOLE, NO. 3 (72" DIA. BASE)				
																		PAVEMENT				
108													108	252	01500	108	FT	FULL DEPTH PAVEMENT SAWING				
58													58	301	56000	58	CY	ASPHALT CONCRETE BASE, PG64-22, (449)				
4,001						41							4,042	304	20000	4,042	CY	AGGREGATE BASE				
928													928	407	10000	928	GAL	TACK COAT				
7,194													7,194	408	10000	7,194	GAL	PRIME COAT				
577													577	441	50101	577	CY	ASPHALT CONCRETE SURFACE COURSE, TYPE 1, (448), AS PER PLAN (PG64-22)	10			
808													808	441	50300	808	CY	ASPHALT CONCRETE INTERMEDIATE COURSE, TYPE 2, (448)				
61						23							84	452	12010	84	SY	8" NON-REINFORCED CONCRETE PAVEMENT, CLASS QC 1P				
					44								44	609	26000	44	FT	CURB, TYPE 6				
				4									4	620	00501	4	EACH	TRAFFIC CONTROL				
																		DELINEATOR, POST GROUND MOUNTED, AS PER PLAN	10			
									115.2	153.6	89.6		358.4	630	02100	358.4	FT	GROUND MOUNTED SUPPORT, NO. 2 POST				
										28	84		112	630	03100	112	FT	GROUND MOUNTED SUPPORT, NO. 3 POST				
									43.2	80.1	93.3		216.6	630	80100	216.6	SF	SIGN, FLAT SHEET				
									1		2		3	630	84900	3	EACH	REMOVAL OF GROUND MOUNTED SIGN AND DISPOSAL				
									2		1		3	630	86002	3	EACH	REMOVAL OF GROUND MOUNTED POST SUPPORT AND DISPOSAL				
									29.7	48.6	29.7		108	630	97900	108	FT	SIGNING, MISC.: 4" X 4" SOLID WOOD POST	110			
								0.02					0.02	644	00100	0.02	MILE	EDGE LINE, 4"				
								110					110	644	00631	110	FT	CROSSWALK LINE, 24", AS PER PLAN	110			
								6					6	644	19000	6	EACH	SHARED LANE MARKING				
												447	447	517	74001	447	FT	STRUCTURE OVER 20 FOOT SPAN				
												363	363	607	39931	363	FT	RAILING, TIMBER, AS PER PLAN	122			
																		VANDAL PROTECTION FENCE, 12' CURVED, COATED FABRIC, AS PER PLAN	122			
																		MISCELLANEOUS STRUCTURE				
						LS							LS	503	11100	LS		COFFERDAMS AND EXCAVATION BRACING				
						58							58	503	21100	58	CY	UNCLASSIFIED EXCAVATION				
						4,320							4,320	509	10000	4,320	LB	EPOXY COATED STEEL REINFORCEMENT				
						22							22	510	10000	22	EACH	DOWEL HOLES WITH NONSHRINK, NONMETALLIC GROUT				
						40							40	511	46211	40	CY	CLASS QC1 CONCRETE, RETAINING/WINGWALL INCLUDING FOOTING, AS PER PLAN				
						25							25	512	10100	25	SY	SEALING OF CONCRETE SURFACES (EPOXY-URETHANE)				
						112							112	512	33000	112	SY	TYPE 2 WATERPROOFING				
						22							22	516	13600	22	SF	1" PREFORMED EXPANSION JOINT FILLER				
						9							9	518	21200	9	CY	POROUS BACKFILL WITH GEOTEXTILE FABRIC				
						8							8	601	32200	8	CY	ROCK CHANNEL PROTECTION, TYPE C WITH FILTER				
						26							26	611	94733	26	FT	7' X 7' CONDUIT, TYPE A, 706.05, AS PER PLAN				
			50										50	616	10000	50	MGAL	MAINTENANCE OF TRAFFIC				
				50									50	622	41100	50	FT	WATER				
																		PORTABLE BARRIER, UNANCHORED				
																		INCIDENTALS				
													LS	614	11001	LS		MAINTAINING TRAFFIC, AS PER PLAN	14			
													14	619	16010	14	MNTH	FIELD OFFICE, TYPE B				
													LS	623	10000	LS		CONSTRUCTION LAYOUT STAKES AND SURVEYING				
													LS	624	10000	LS		MOBILIZATION				

GENERAL SUMMARY

TRU-W. RESERVE
 GREENWAY-PHASE4

O:\Public\OH\TrumbullCo\2017\109.00\TRU\99804\Design\Structures\Sheets\046_0363C_S\N001.dgn Sheet 1 9/22/2025 10:25:00 AM dcastranova

SCOPE OF WORK

THIS PROJECT CONSISTS OF RETROFITTING THE TWO EXISTING, ABANDONED RAILROAD BRIDGES FOR USE AS PEDESTRIAN HIKE AND BIKE TRAIL STRUCTURES CROSSING OVER ROBBINS AVENUE (S.R. 46/S.R. 169) AND MAIN STREET (S.R. 169) IN TRUMBULL COUNTY. THE WORK IS TO BE CONSTRUCTED IN CONJUNCTION WITH THE ADJACENT ON-GRADE HIKE AND BIKE TRAIL PROJECT. THE SCOPE OF WORK ON THE BRIDGES SHALL INCLUDE, BUT NOT BE LIMITED TO, THE FOLLOWING AS SHOWN AND/OR NOTED ON THE DRAWINGS:

1. CLEAR ALL BRUSH AND VEGETATION ADJACENT TO OR GROWING WITHIN THE STRUCTURE. LIMITS INCLUDE 15’ ON EACH SIDE OF THE CENTERLINE OF CONSTRUCTION OF THE BRIDGE AS WELL AS 15’ BEYOND EACH ABUTMENT END.
2. REMOVE WOODEN RAILROAD TIES ON THE BRIDGE.
3. CONSTRUCT THE NEW SHARED-USE PATH ACCORDING TO THE TYPICAL SECTIONS.
4. INSTALL NEW VANDAL PROTECTION FENCE, MOUNTED TO THE EXISTING CONCRETE PEDESTALS ON BOTH BRIDGES, AS SHOWN IN THE PLANS.
5. INSTALL NEW TIMBER RAILING, MOUNTED TO THE EXISTING CONCRETE PEDESTALS ON BOTH BRIDGES AND ON THE BRIDGE APPROACHES, AS SHOWN IN THE PLANS.

NOTE: THE CLEARING OF ALL BRUSH AND VEGETATION, AS WELL AS THE REMOVAL OF THE WOODEN RAILROAD TIES ON EACH BRIDGE, SHALL BE INCLUDED FOR PAYMENT WITH ITEM 201 – CLEARING AND GRUBBING.

DESIGN DATA

DESIGN LOADING: 90 PSF PEDESTRIAN LOADING OR H15-44
MAINTENANCE/EMERGENCY VEHICLE

VERIFICATION OF THE EXISTING STRUCTURES

DETAILS AND DIMENSIONS SHOWN ON THESE PLANS PERTAINING TO THE EXISTING STRUCTURES HAVE BEEN OBTAINED FROM FIELD OBSERVATIONS, FIELD SURVEY, AND APPROXIMATE MEASUREMENTS. CONSEQUENTLY, THEY ARE INDICATIVE OF THE EXISTING STRUCTURE AND THE PROPOSED WORK BUT THEY SHALL BE CONSIDERED TENTATIVE AND APPROXIMATE. THE CONTRACTOR IS REFERRED TO ODOT CMS SECTIONS 102.05, 105.02 AND 513.04. BASE CONTRACT BID PRICES UPON A RECOGNITION OF THE UNCERTAINTIES DESCRIBED ABOVE AND UPON A PREBID EXAMINATION OF THE EXISTING STRUCTURE.

ITEM 607 – VANDAL PROTECTION FENCE, 12’ CURVED, COATED FABRIC, AS PER PLAN

THIS WORK SHALL CONSIST OF THE INSTALLATION OF NEW 12’ CURVED VANDAL PROTECTION FENCE, MOUNTED ON THE EXISTING CONCRETE PEDESTALS ON EACH BRIDGE AS SHOWN IN THE PLANS. ALL MATERIALS, LABOR, AND INCIDENTALS SHALL BE BASED ON THE REQUIREMENTS OF ODOT STANDARD DRAWING VPF-1-24, EXCEPT THAT THE FENCE FABRIC SHALL BE PLACED ON THE INSIDE (TRAIL SIDE) OF THE FENCE POSTS AND RAILS, AND A RECTANGULAR BP-1 BASE PLATE ACCORDING TO ARCHIVED ODOT STANDARD DRAWING VPF-1-90 SHALL BE USED. THE COLOR OF THE FENCE COMPONENTS SHALL BE BLACK. FENCE POST SPACINGS MAY BE SHIFTED AS NEEDED FROM THE PLAN SPECIFIED LOCATIONS TO AVOID INTERFERENCE WITH THE EXISTING DIAGONAL STIFFENERS OF THE RIVETED STEEL GIRDERS. FENCE POST SPACINGS SHALL BE HELD TO A MAXIMUM OF 9’-0” AS SPECIFIED IN THE STANDARD DRAWING.

ITEM 517 – RAILING, TIMBER, AS PER PLAN

THIS WORK SHALL CONSIST OF THE INSTALLATION OF NEW TREATED TIMBER RAILINGS MOUNTED TO THE EXISTING CONCRETE PEDESTALS ON THE BRIDGE AND ON-GRADE AT THE BRIDGE APPROACHES, AS SHOWN IN THE PLANS. LUMBER MATERIAL SHALL BE NO. 1 SOUTHERN PINE. RAIL POST SPACINGS MAY BE SHIFTED AS NEEDED FROM THE PLAN SPECIFIED LOCATIONS TO AVOID INTERFERENCE WITH THE EXISTING DIAGONAL STIFFENERS OF THE RIVETED STEEL GIRDERS. LIMIT THE TIMBER RAIL POST SPACING TO 7’-0” MAXIMUM.

PRESERVATIVE TREATMENT SHALL CONSIST OF EITHER COPPER AZOLE - TYPE B (CA-B) WITH 0.10 PCF MINIMUM RETENTION OR COPPER QUAT (ACQ) WITH 0.25 PCF MINIMUM RETENTION. ALL BOLTS SHALL BE HOT-DIPPED GALVANIZED.

PAYMENT WILL BE MADE AT THE CONTRACT UNIT PRICE BID PER FOOT OF COMPLETED RAILING AND SHALL INCLUDE ALL LABOR, MATERIALS AND INCIDENTALS TO COMPLETE THE WORK.

ESTIMATED QUANTITIES								
ITEM	EXTENSION	TOTAL	PARTICIPATION	UNITS	DESCRIPTION	BRIDGE NO.		A.P.P. REF. SHEET NO.
			01/CMQ			TRU-46-0363	TRU-169-0416	
517	74001	447	447	FT	RAILING, TIMBER, AS PER PLAN	195	252	1
607	39931	363	363	FT	VANDAL PROTECTION FENCE, 12’ CURVED, COATED FABRIC, AS PER PLAN	164	199	1

BRIDGE QUANTITIES ARE CARRIED TO THE GENERAL SUMMARY

DESIGN AGENCY
GPD GROUP*
Chris, PMA, Schoner, Burns & DeHaven, Inc.
100 Federal East, Suite 200, Youngstown, OH 44403 330.599.4321
Copyright © Chris, PMA, Schoner, Burns & DeHaven, Inc. 2020

DATE
4-11-24

REVIEWED
TJW

STRUCTURE FILE NUMBER
7802498/7806124

DRAWN
DJC

REVISD

DESIGNED
DJC

CHECKED
RHC

GENERAL NOTES & ESTIMATED QUANTITIES
BRIDGE NOS. TRU-46-0363 / TRU-169-0416
WESTERN RESERVE GREENWAY OVER S.R. 46 & S.R. 169 / OVER S.R. 169

TRU-WESTERN
RESERVE GREENWAY
PID No. 99804

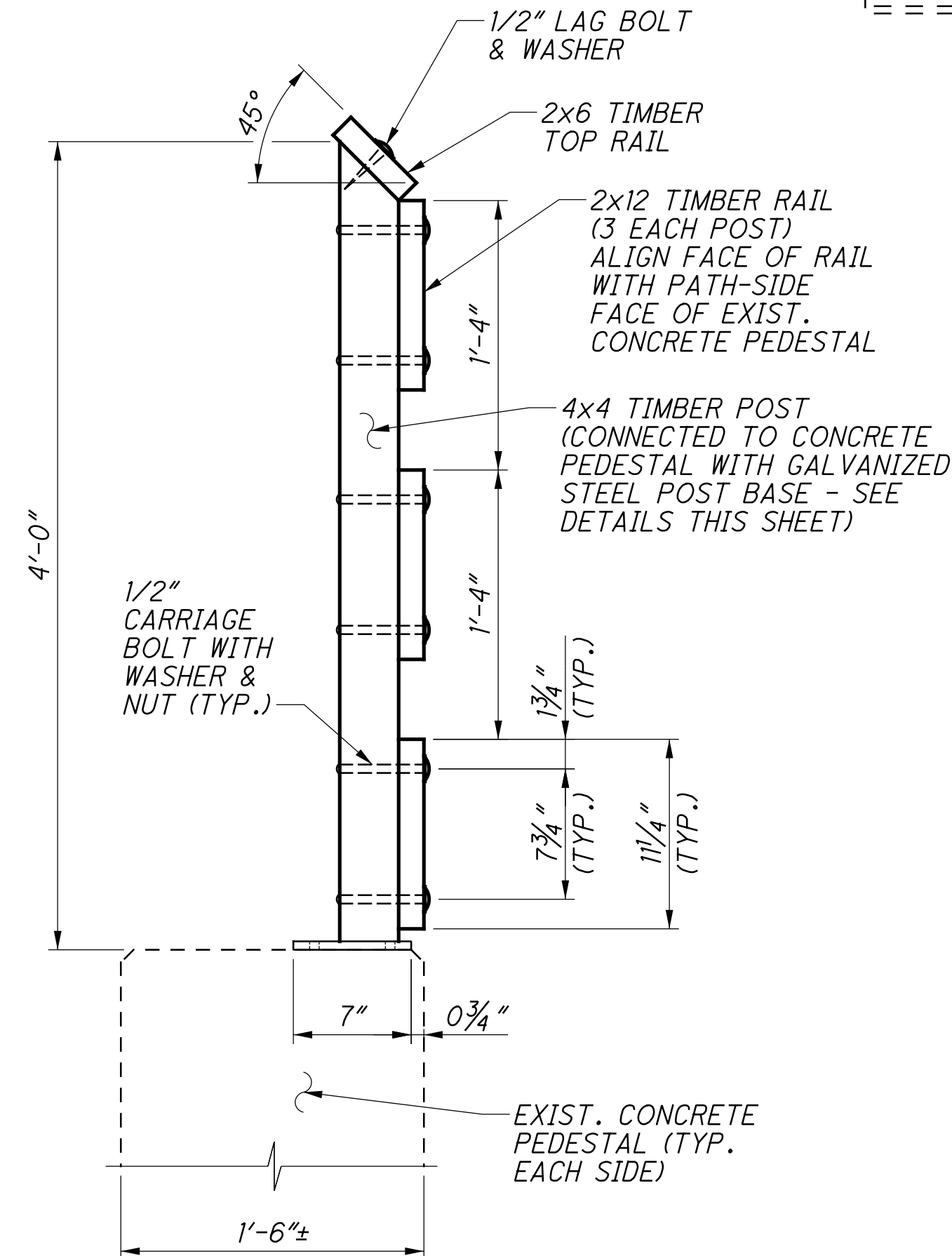
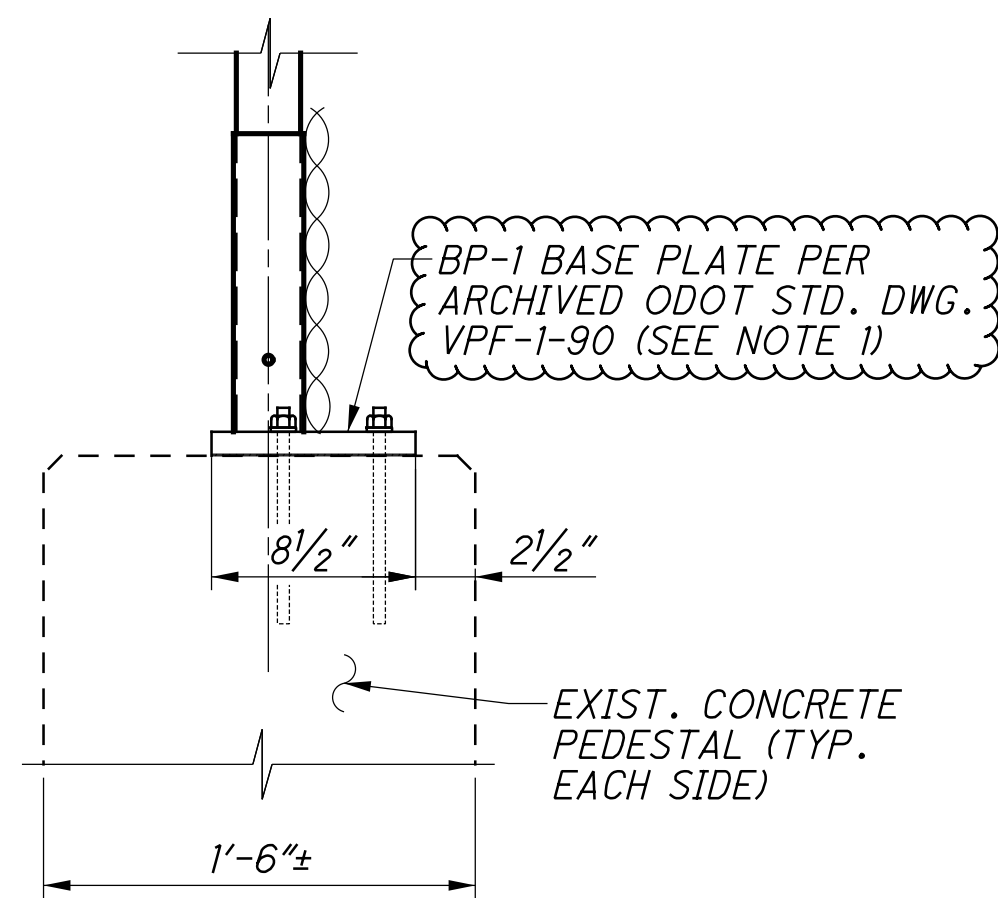
1 / 4

122
143

O:\Public\OH\TrumbullCo\2017\109.00\TRU\99804\Design\Structures\Sheets\046_0363C_ST001.dgn Sheet 9/22/2025 10:19:29 AM dcostronova

FENCE BASE SECTION

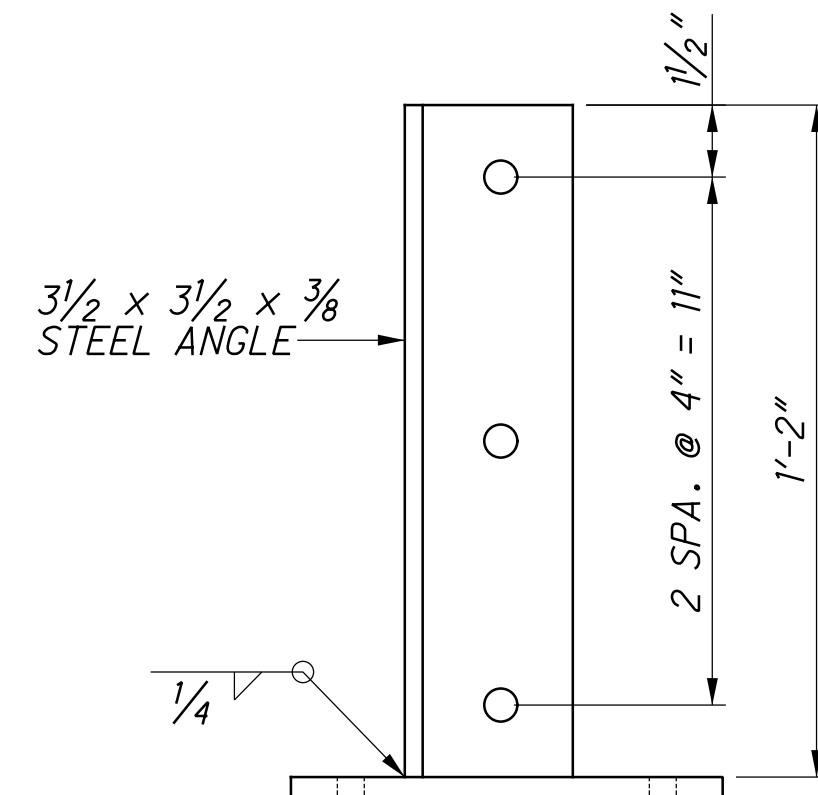
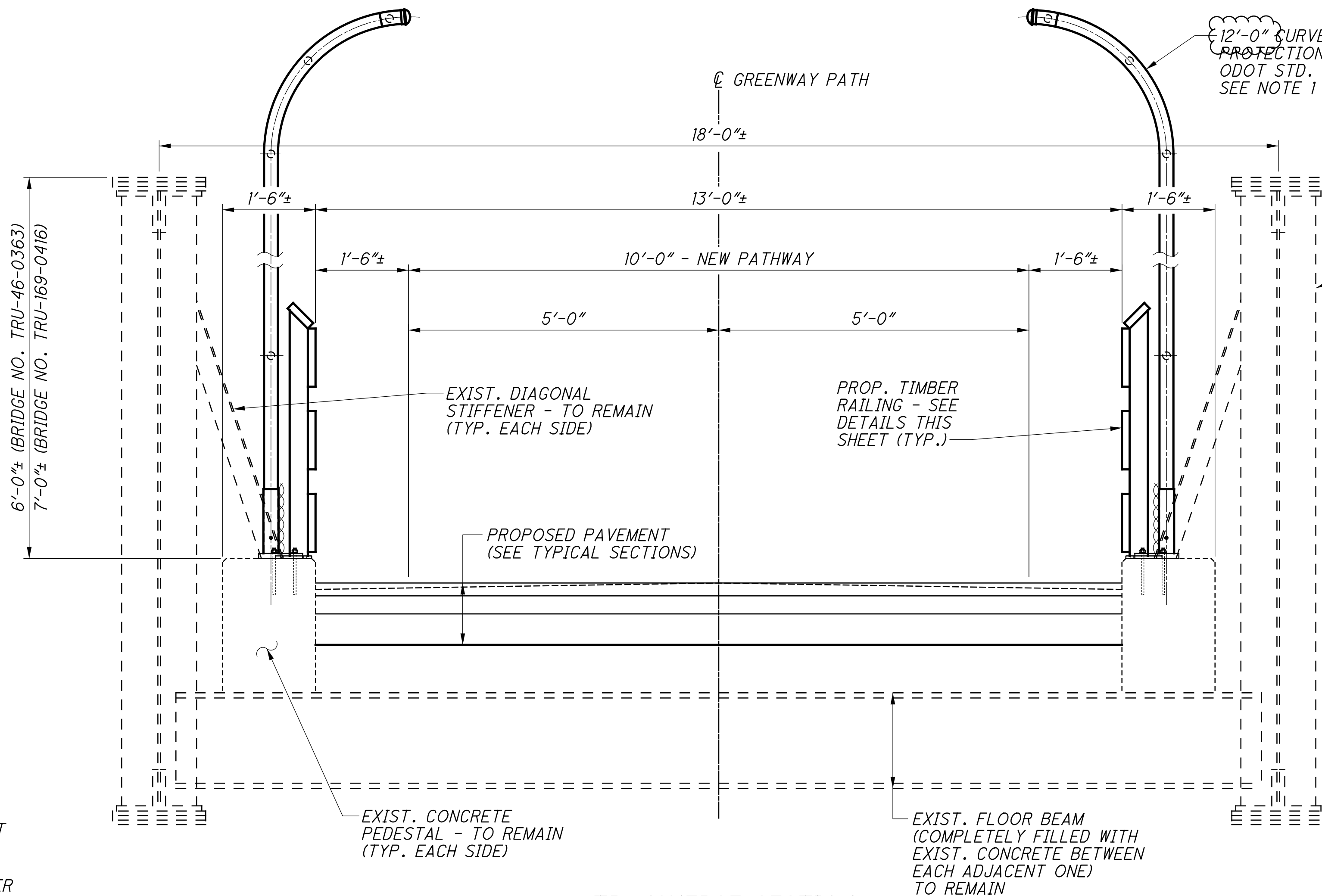
TIMBER RAILING NOT SHOWN



TIMBER RAILING SECTION

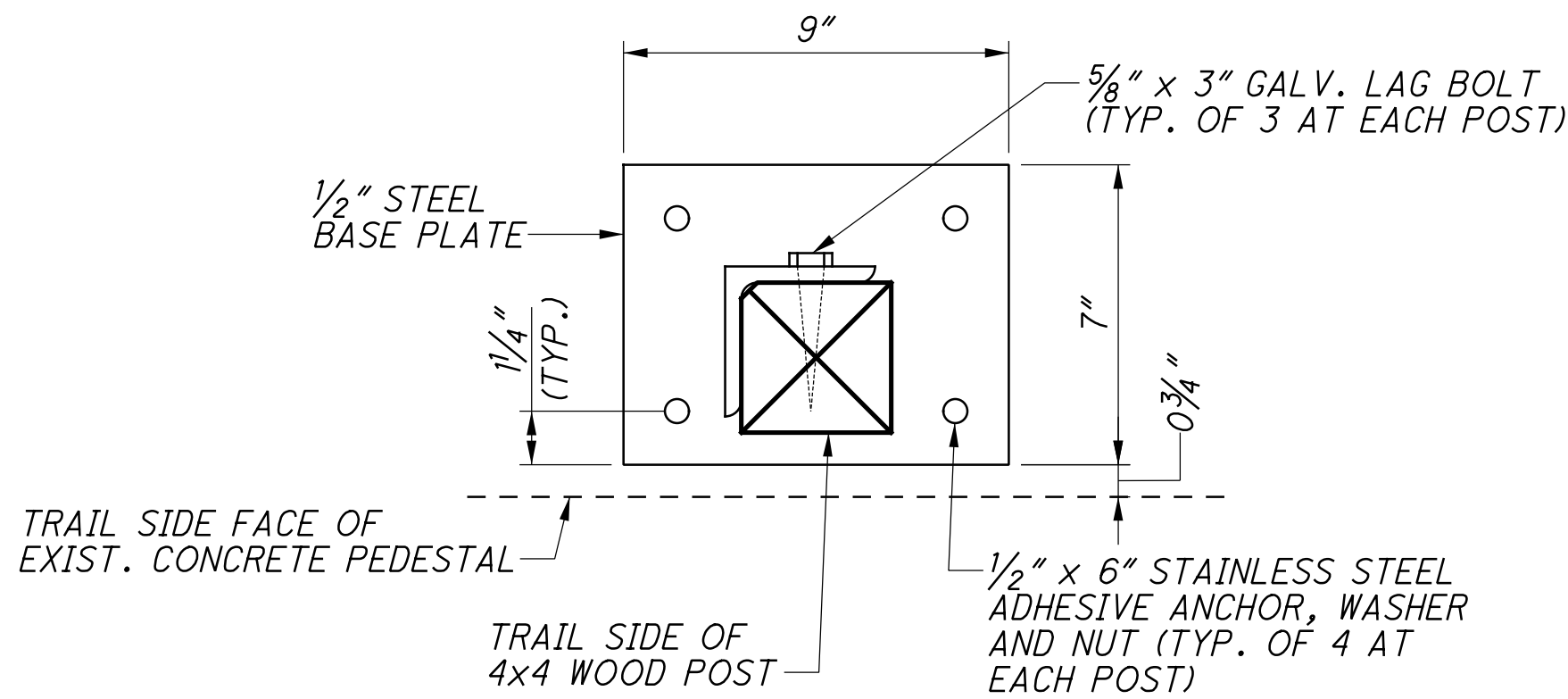
FENCE NOT SHOWN

TRANSVERSE SECTION



RAILING BASE MOUNT DETAIL

FOR RAILING MOUNTED ON TOP OF EXISTING CONCRETE PEDESTALS ON THE BRIDGE. STEEL ANGLE AND BASE PLATE TO BE HOT-DIPPED GALVANIZED



ON-GRADE RAILING

NOTES:

- THE 12' CURVED VANDAL PROTECTION FENCE SHALL BE MOUNTED TO THE TOPS OF THE EXISTING CONCRETE PEDESTALS UTILIZING A BP-1 BASE PLATE FROM ARCHIVED ODOT STD. DWG. VPF-1-90. THE FENCE FABRIC SHALL BE PLACED ON THE INSIDE (TRAIL SIDE) FACE OF THE FENCE POSTS AND RAILS. FOR ADDITIONAL FENCE DETAILS AND NOTES NOT SHOWN, SEE ODOT STD. DWG. VPF-1-24 AND ARCHIVED ODOT STD. DWG. VPF-1-90.
- FENCE POSTS AND TIMBER RAILING POSTS MAY BE SHIFTED ALONG THE LENGTH OF EACH BRIDGE TO AVOID INTERFERENCE WITH THE EXISTING DIAGONAL GIRDER STIFFENERS. FOR FENCE POST AND TIMBER RAIL POST LAYOUT, SEE SHT. NOS. 2/4 & 3/4.
- FOR GENERAL NOTES, SEE SHT. NO. 1/4.

TRANSVERSE SECTION

BRIDGE NOS. TRU-46-0363 / TRU-169-0416

WESTERN RESERVE GREENWAY OVER S.R. 46 & S.R. 169 / OVER S.R. 169

TRU-WESTERN
RESERVE GREENWAY
PID No. 99804

4 / 4

125
143