

O.D.O.T. DISTRICT 2 SURVEY OFFICE (USE ONLY)

PERSONNEL

REFERENCE NO. 35

SHEET 14 OF 21

NOTES HOMAN

DATE 5/9/08

ROUTE US 20

H.C. HOMAN

WEATHER CLEAR

COUNTY FULTON

R.C. ROUSOS

TEMP. 69°

TOWNSHIP ROYALTON

SECTION 20

DWG BY RHOADES

PID 80672, 95725

T 9 N R 3 E

TYPE MONUMENT P.K.NAIL

ON SURFACE - ~~BELOW~~ ON

OFFSET \varnothing PAVEMENT ON _____ LT : RT

- TO - EDGE PAVEMENT

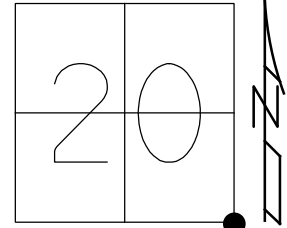
STATION: 939+03.47

HORZ.DATUM: NAD83 2011

GEOID: NAVD88 2012A

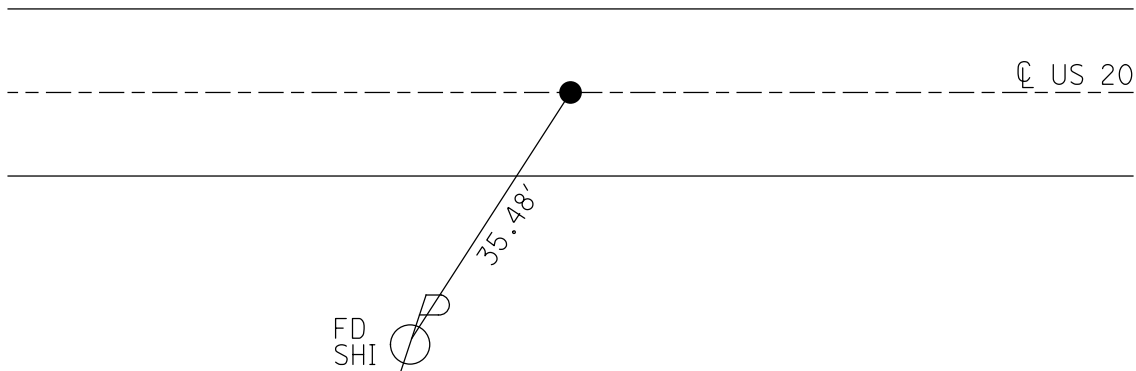
GRID: NORTHING: 733863.994

EASTING: 1538311.890



RECORD:
 STA 944+61.5
 FD P.K. NAIL
 3-21-86, DC
 SET P.K.NAIL
 8-6-87
 FD P.K.NAIL
 5/9/08, DCH
 D.N.F.
 6-25-08, DCH
 SET MAG/WASHER
 RN11
 PID #80672
 STA: 939+05
 10/29/09, DCH
 D.N.F.
 9-22-15, JFO
 SET MAG/WASHER
 4/12/17, JFO
 PID #95725
 SET MAG/WASHER
 NEWREF35
 6/25/18, JLL

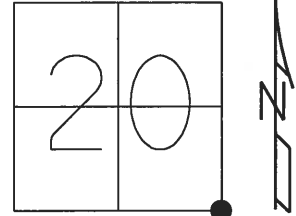
NOTE:
 SET MAG/SHINER
 1/4/19, J.D.FENICLE
 FULTON COUNTY
 TIES=
 N 30.02' FD "T" STAKE
 NE 72.90' NEAR FACE 8" PVC WELL CASING
 SW 32.01' SET FULTON CO. TAG PP
 NW 110.96' SET "+" NE METAL CAGE F/GVALVE
 NW 51.77' SET FULTON CO. TAG PP
 N= 733864.373
 E= 1538312.277



O.D.O.T. DISTRICT 2 SURVEY OFFICE (USE ONLY)

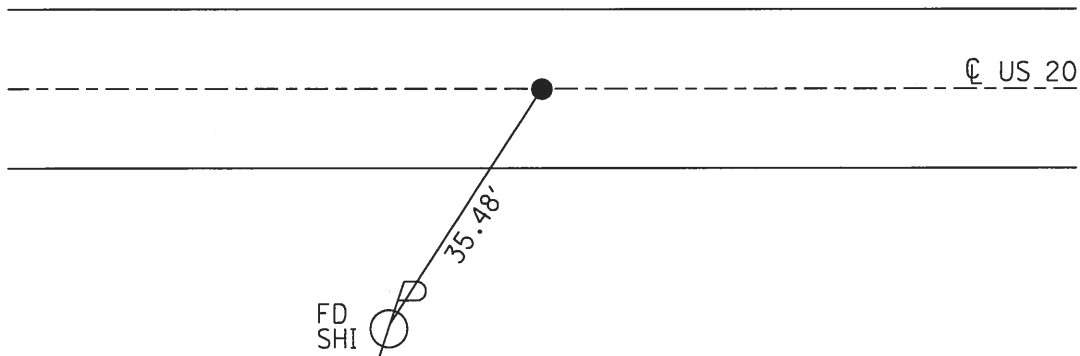
PERSONNEL _____ REFERENCE NO. 35 SHEET 14 OF 21
 NOTES HOMAN DATE 5/9/08 ROUTE US 20
 H.C. HOMAN WEATHER CLEAR COUNTY FULTON
 R.C. ROUSOS TEMP. 69° TOWNSHIP ROYALTON
 _____ SECTION 20
 _____ T 9 S R 3 E

TYPE MONUMENT _____ P.K. NAIL _____
 ON SURFACE - ~~BELOW~~ _____ ON _____
~~LEFT~~ - ☉ PAV'T - ~~RIGHT~~ _____ ON _____
 _____ TO _____ EDGE PAVEMENT
 S.L.M. 939+03.47



GRID: NORTHING: 733863.994 EASTING: 1538311.890

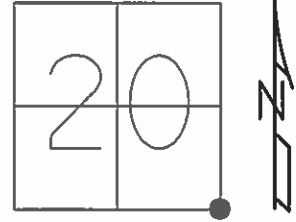
RECORD:
 SET P.K. NAIL
 3-21-86, CURTIS
 SET P.K.NAIL
 8-6-87
 DNF P.K./WASHER
 5-9-08
 DUG-DNF
 6-25-08, DCH
 DNF
 9-22-15, JFO
 PROJECT PID #80672
 MAG/WASHER WAS CALC
 AS # RN11
 STA: 939+05



O.D.O.T. DISTRICT 2 SURVEY OFFICE (USE ONLY)

PERSONNEL _____ REFERENCE NO. 35 SHEET 10 OF 17
NOTES HOMAN DATE 5/9/08 ROUTE US 20
H.C. HOMAN WEATHER CLEAR COUNTY FULTON
R.C. ROUSOS TEMP. 69° TOWNSHIP ROYALTON
SECTION 20
T 9 S R 2 E

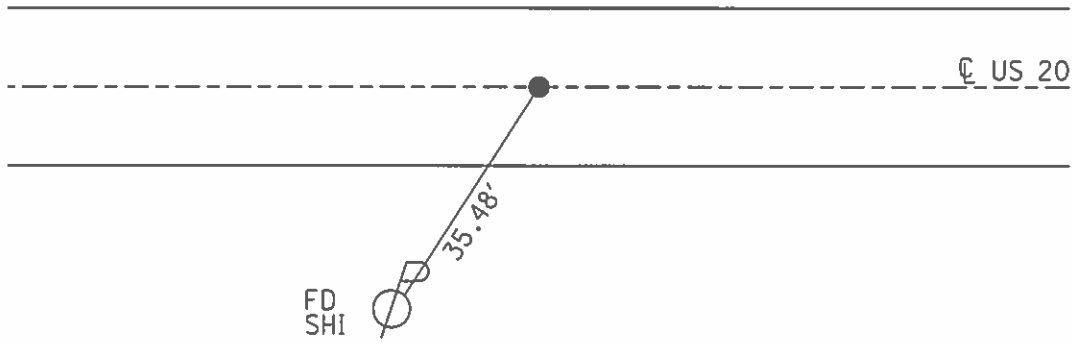
TYPE MONUMENT P.K.NAIL
ON SURFACE - ~~BELOW~~ SURFACE=3/9/1986
LEFT - ☉ PAV'T - RIGHT _____
_____ TO _____ EDGE PAVEMENT
S.L.M. 944+61.5
GRID: NORTHING: 733863.994 EASTING: 1538311.890



SET P.K.NAIL
TO SURFACE 8/6/87

DNF P.K./WASHER
5/9/08

DUG-DNF
6/25/08 DCH



O.D.O.T. DISTRICT 2 SURVEY OFFICE

PERSONNEL

REFERENCE NO. 35

SHEET 6 OF 12

NOTES J. Householder

H.C. D. Curtis

R.C. R. Michalak

DATE March 21, 1986

WEATHER P. Cloudy

TEMP. 25°

ROUTE U.S. 20

COUNTY Fulton

TOWNSHIP Royalton

SECTION 20

T. R.

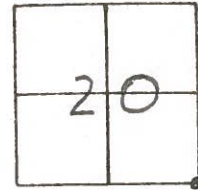
TYPE MONUMENT P.K. Nail

ON SURFACE - BELOW surface

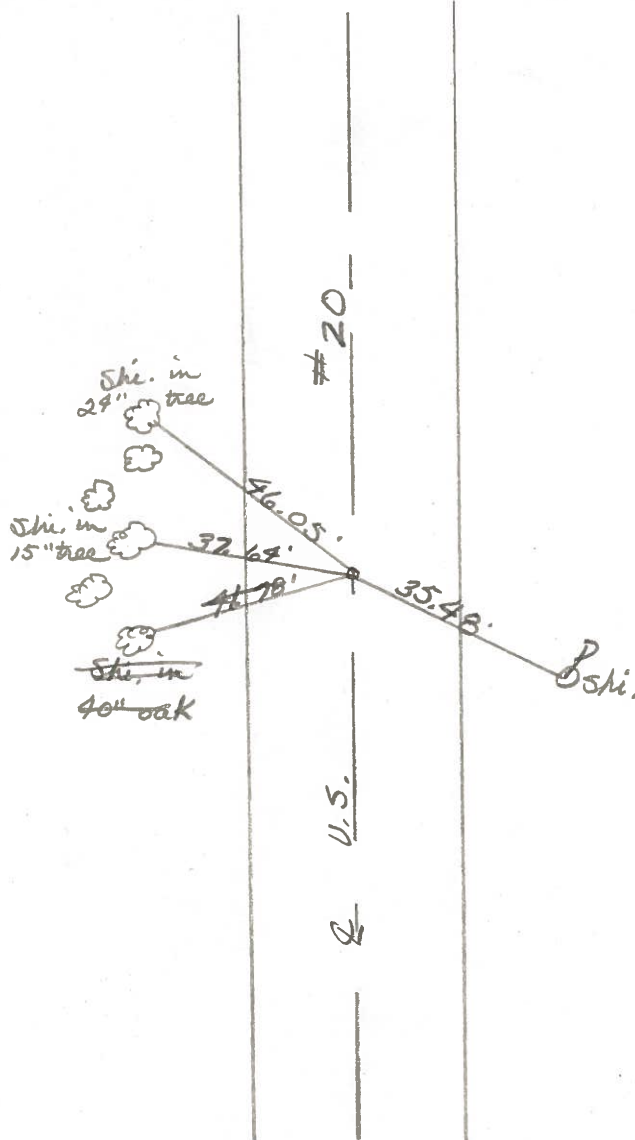
LEFT - ☉ PAW'T. - RIGHT

 TO EDGE PAVEMENT

S.L.M. 944 + 61.5



SET P.K. NAIL TO SURFACE
8-6-87



O.D.O.T. DISTRICT 2 SURVEY OFFICE

PERSONNEL

REFERENCE NO. 35

SHEET 2 OF 2

NOTES 1. Stone

H.C. D. Curtis

DATE 11 July 85

ROUTE US #20

R.C. R. Michalak

WEATHER Warm

COUNTY Fulton

J. Hauschalter

TEMP. 79°

TOWNSHIP Royalton

SECTION 20

T 9 S R 2 E

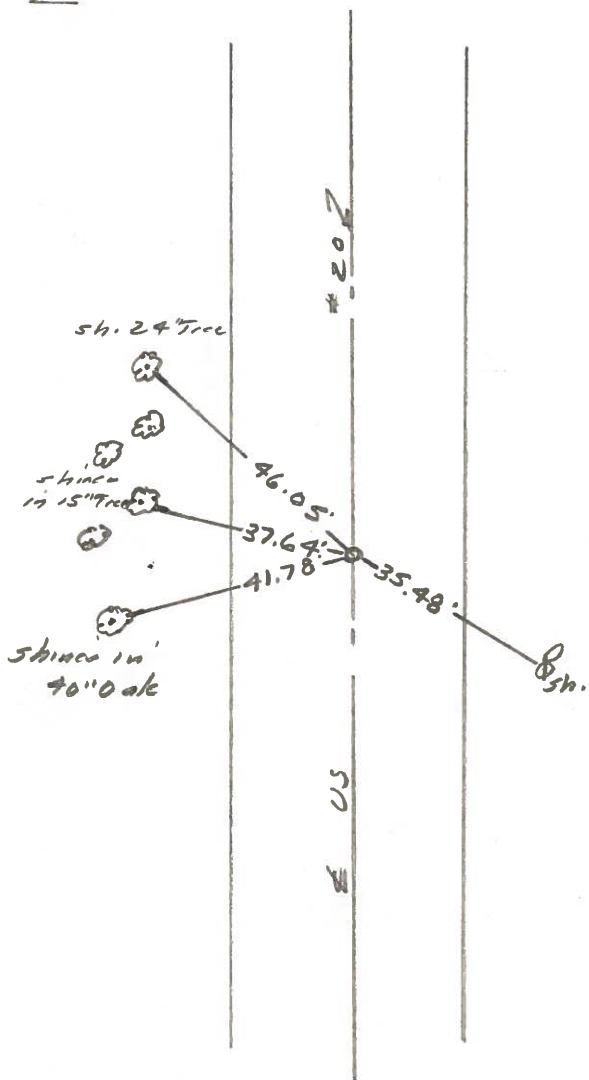
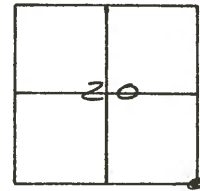
TYPE MONUMENT PK Nail

ON SURFACE - BELOW Surface

LEFT- & PAW'T. - RIGHT

TO EDGE PAVEMENT

S.L.M. 944+61.5



County FULTON ~~S.R.~~ U.S. 20

Date 3-11-80

Township ROYALTON

Weather CLEAR

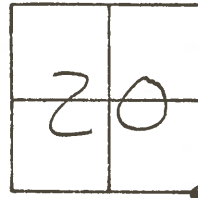
Section 20, 21, 28, 29

Temp. +30°

T9N, R3E

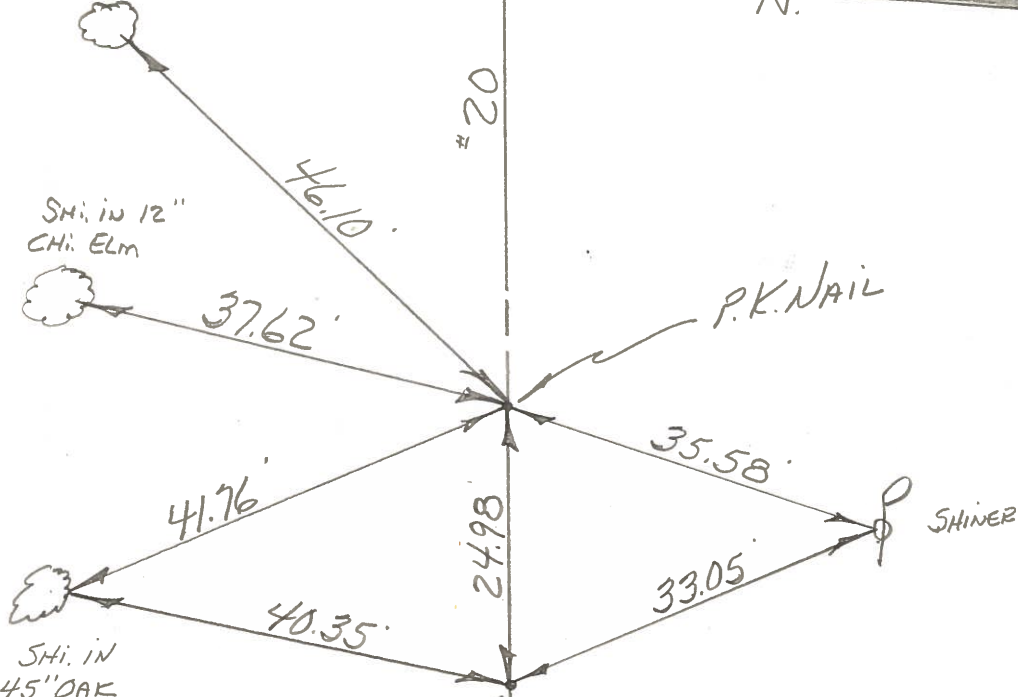
Personnel BOWERS

MEAD



35

SEC. COR. 20, 21, 28, 29 SHI. in 24" TWIG
CHI. ELM.



P.K. NAIL
RE-SET P.K. NAILS
8-25-80
SMITH

PERSONNEL	TITLE	PERSONNEL	TITLE	COUNTY	Fulton	DATE	JUN 13, 1973
Tomsic		Boyle		S. R.	U.S. 20	WEATHER	
Neuser				SEC.	Royalton TWP.	TEMP.	
Granata							
Vanyo							

DESCRIPTION _____ LEFT _____ CENTER LINE _____ RIGHT _____ JOB NO. _____

