

— SURVEY OF —

MIAMI AND ERIE CANAL

*AT & S Canal
Survey of the Erie Canal*

FROM CHERRY STREET TO MAUMEE RIVER.

— SCALE 50 FT. = 1 IN. —

1907

a-3

Scale 50 ft. = 1 in.

SEC. 21

GUION TRACT

MACKINAC ST.

ST.

2

3

ST.

4

23

LASALLE

24

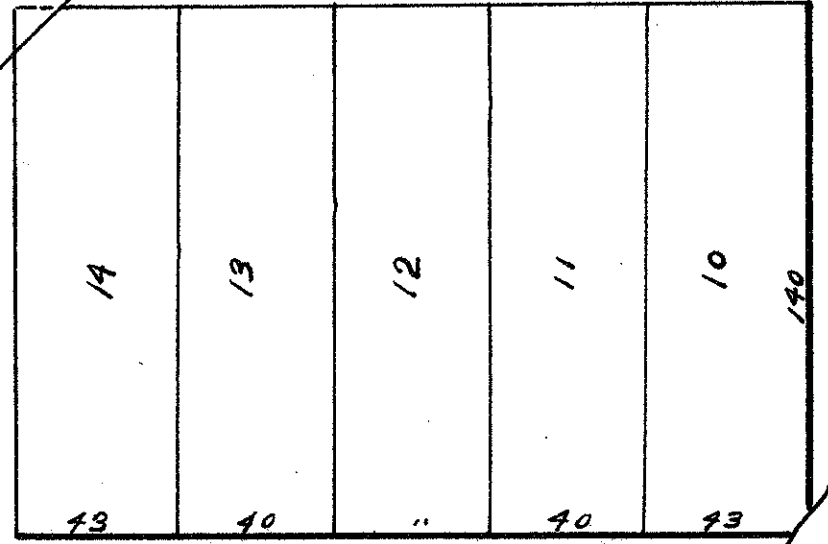
SUMMIT AVE.

2

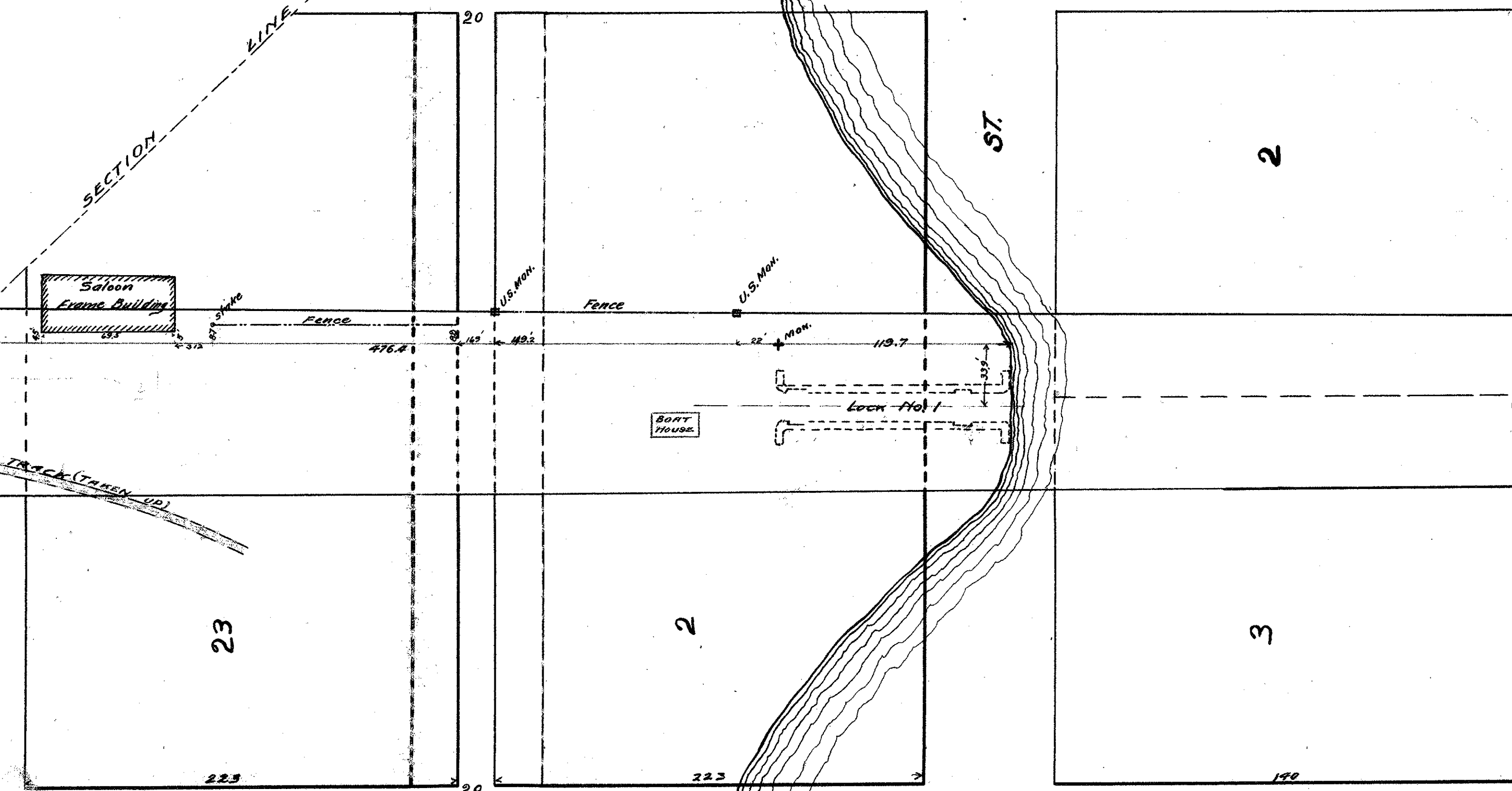
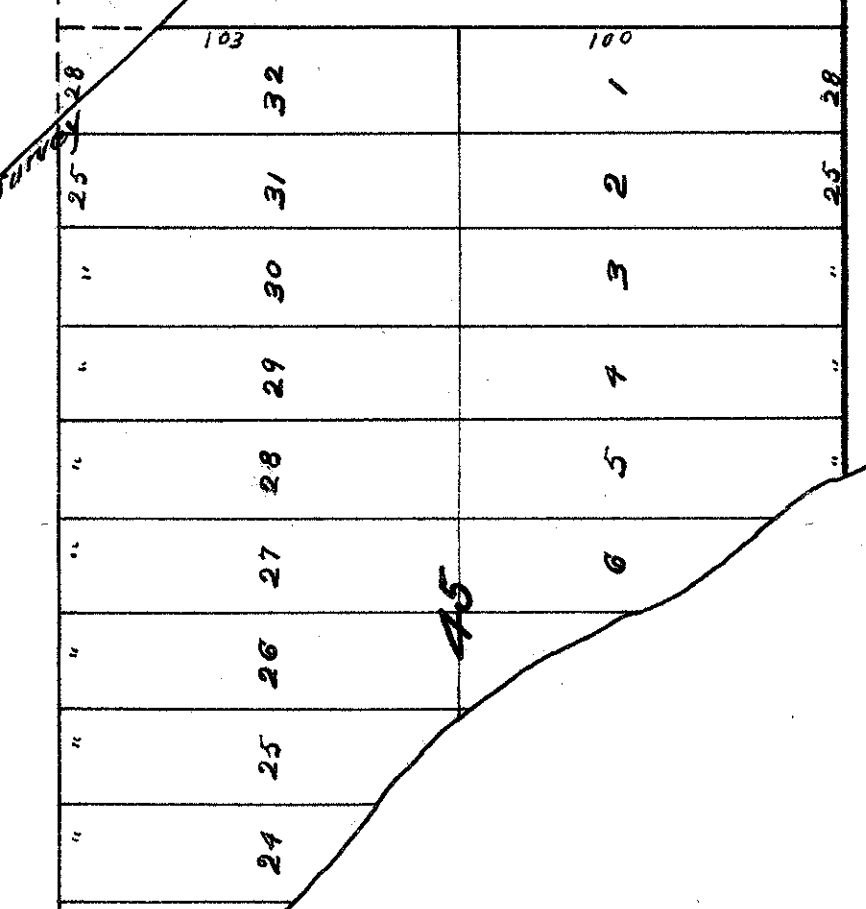
3

WATER

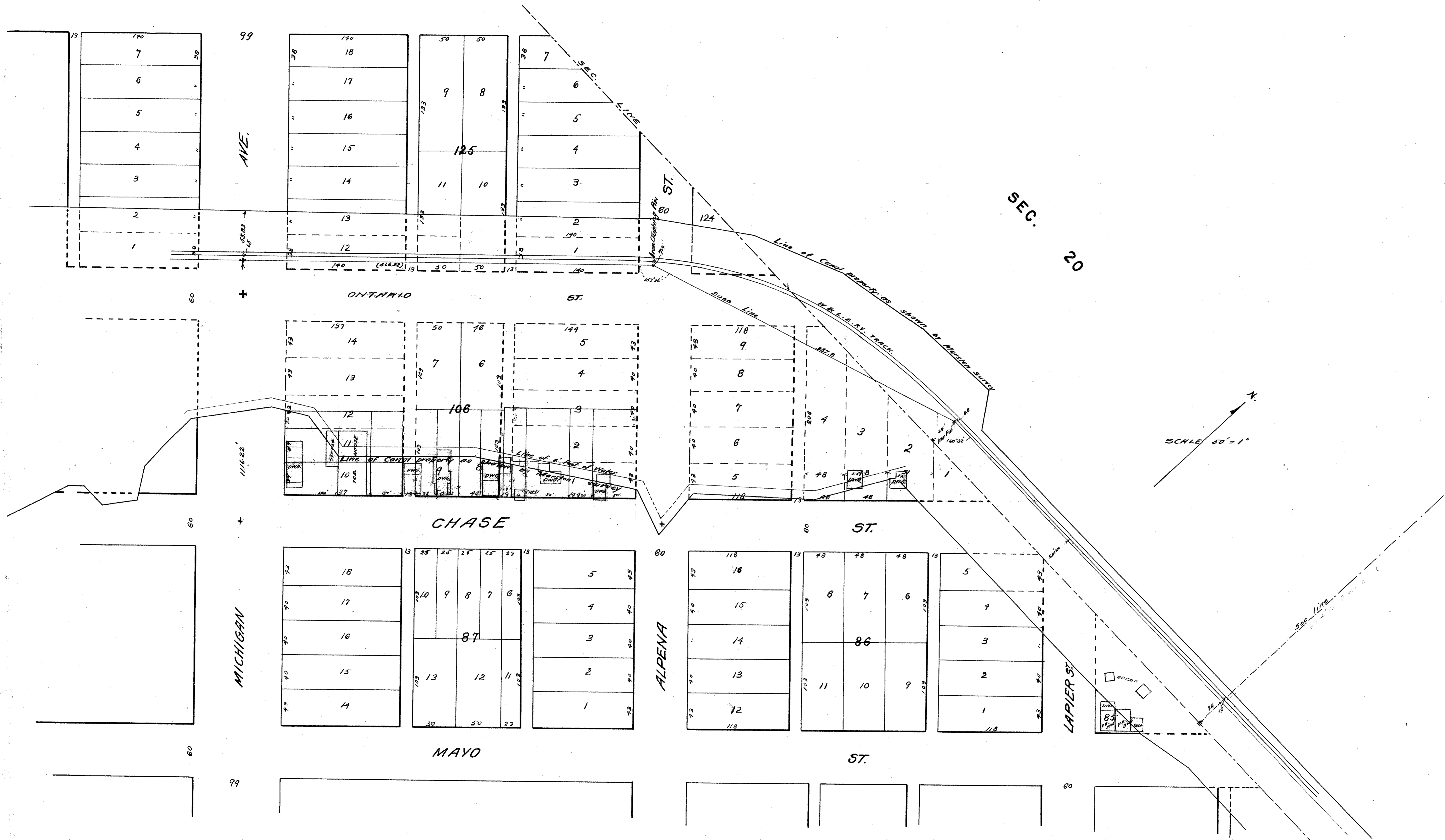
MAYO'S ST.



ERIE ST.

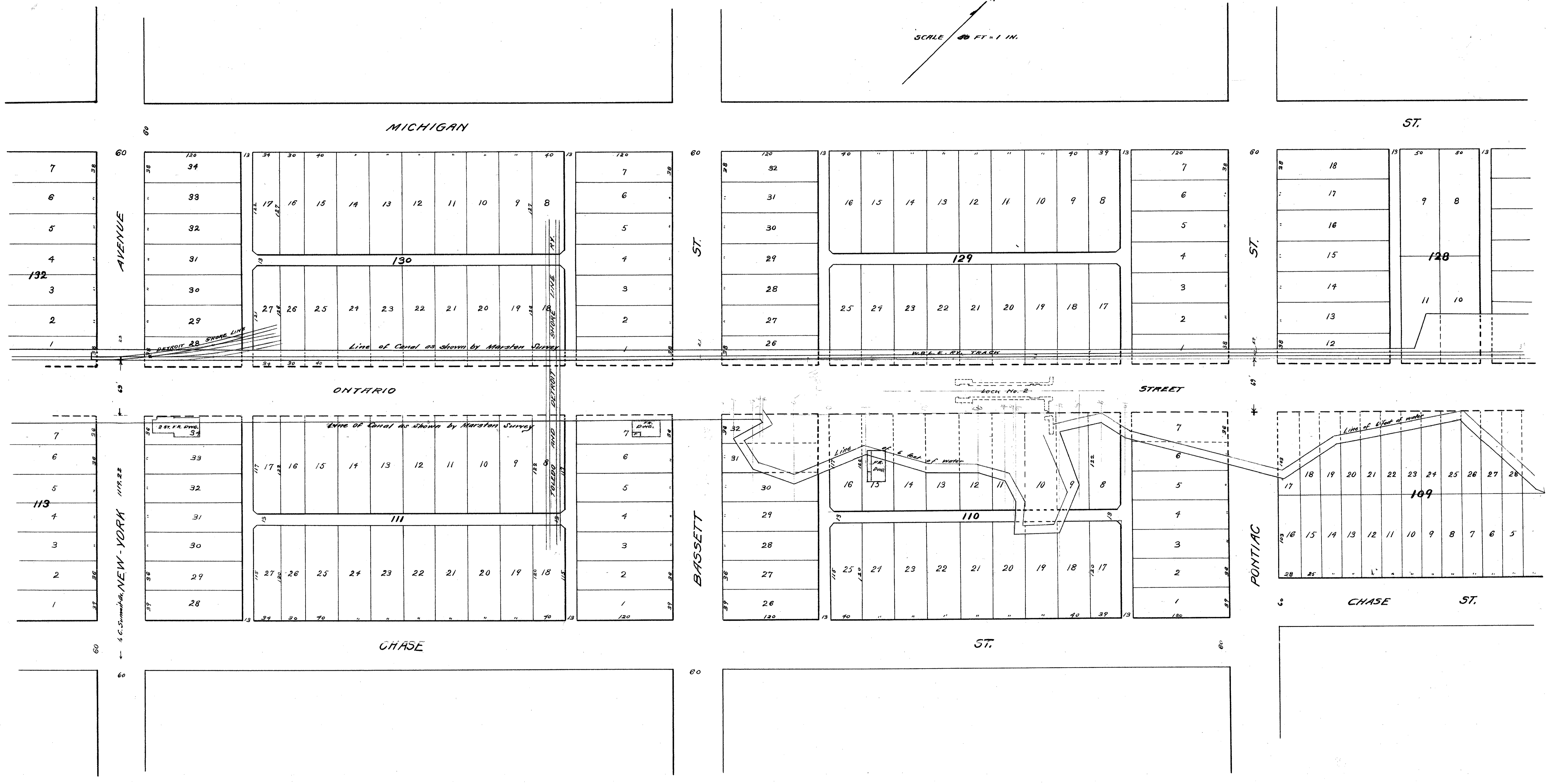
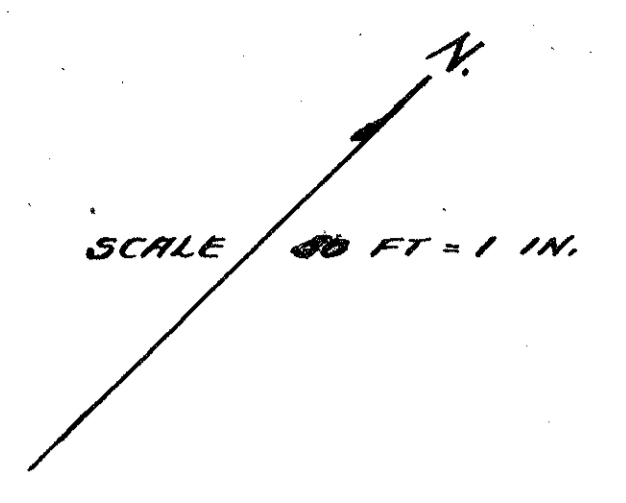


MILWAUKEE RIVER

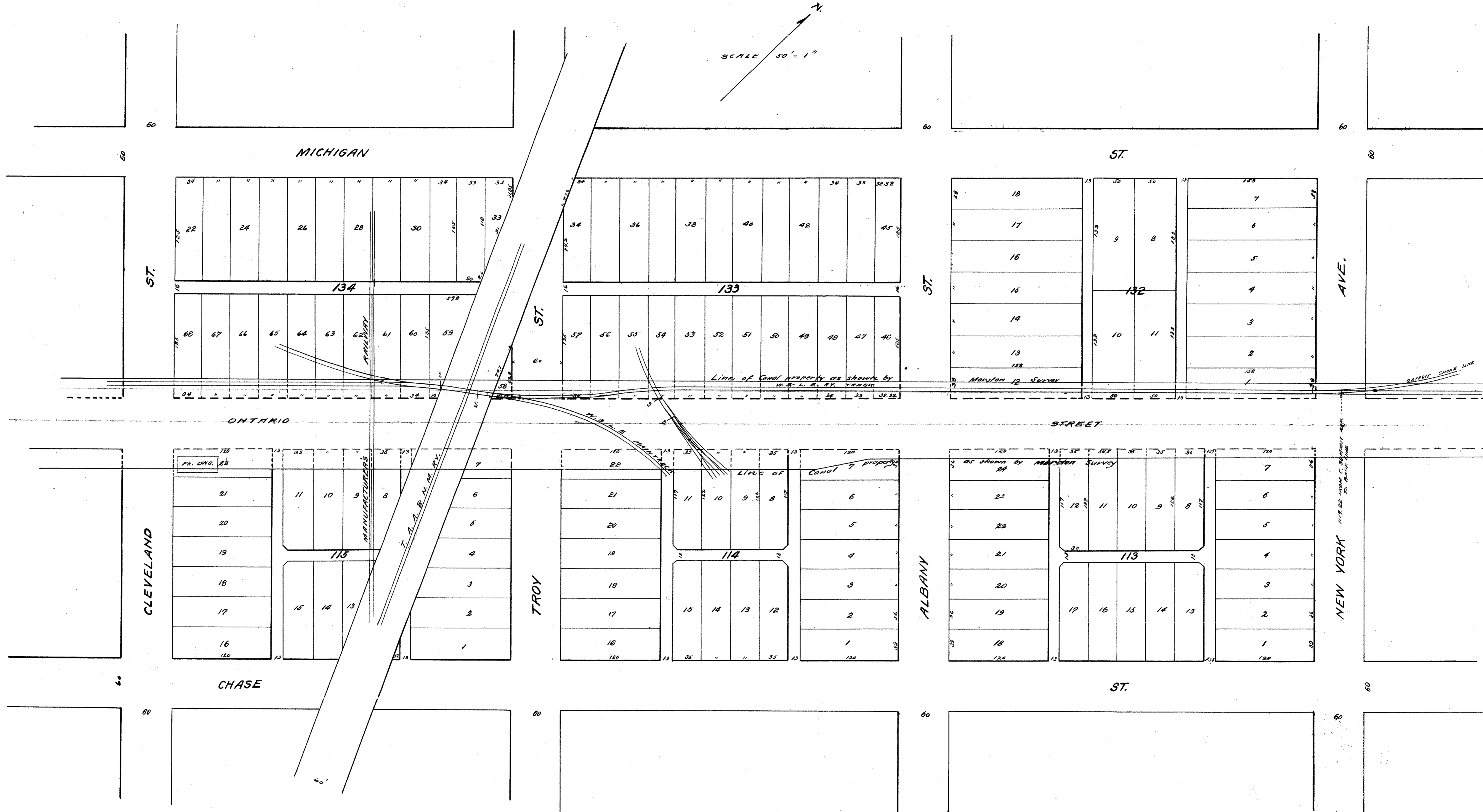


SCALE 50' = 1"





SCALE 50' = 1"



60

MICHIGAN

ST.

ST.

134

ST.

133

ST.

132

AVE.

ONTARIO

STREET

CLEVELAND

CHASE

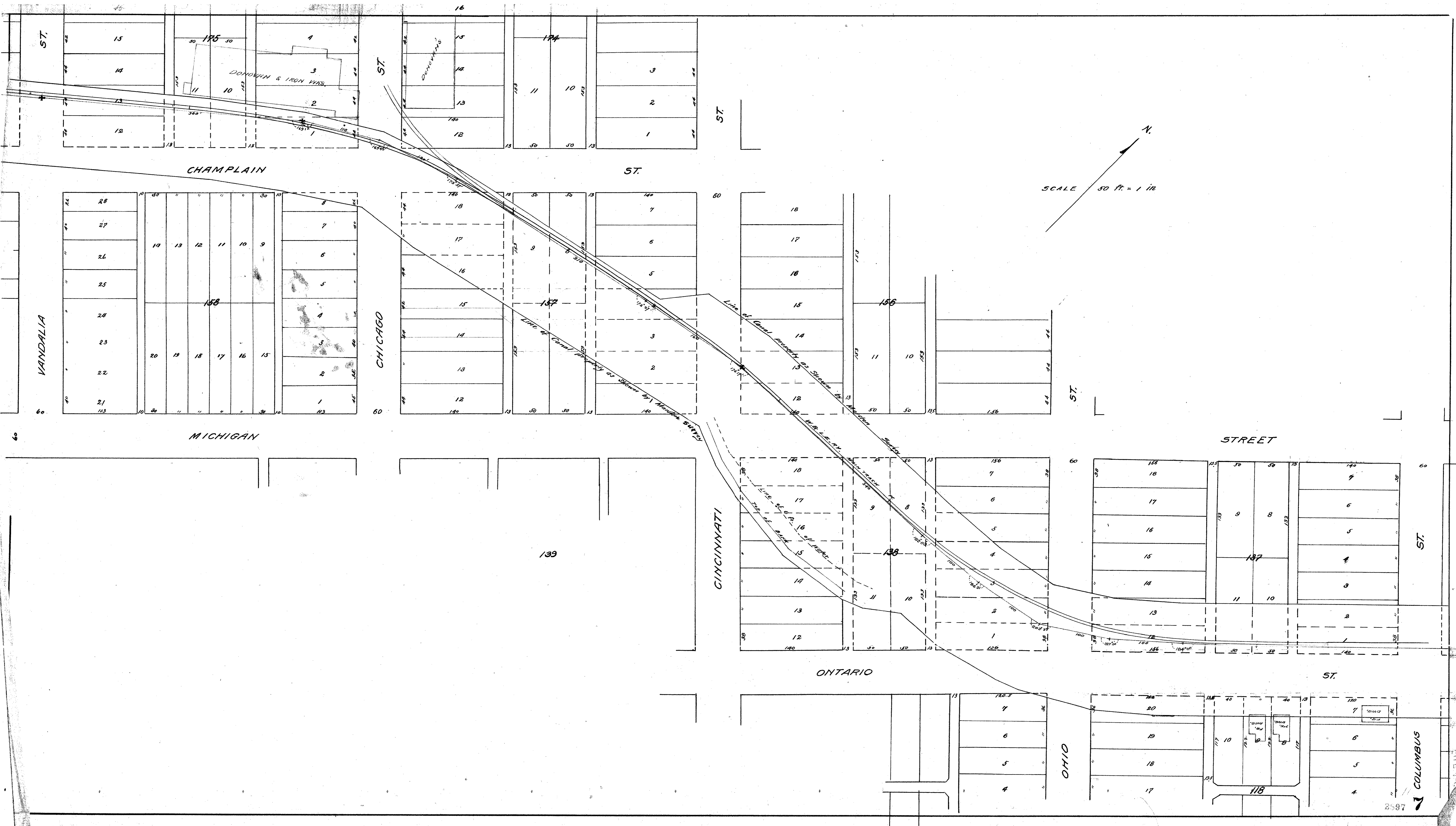
TROY

ALBANY

NEW YORK

ST.





SCALE 50 FT. = 1 IN.
N.

CHAMPLAIN

ST.

MICHIGAN

STREET

ONTARIO

ST.

VANDALIA

CHICAGO

CINCINNATI

OHIO

COLUMBUS

139

137

138

118

158

157

156

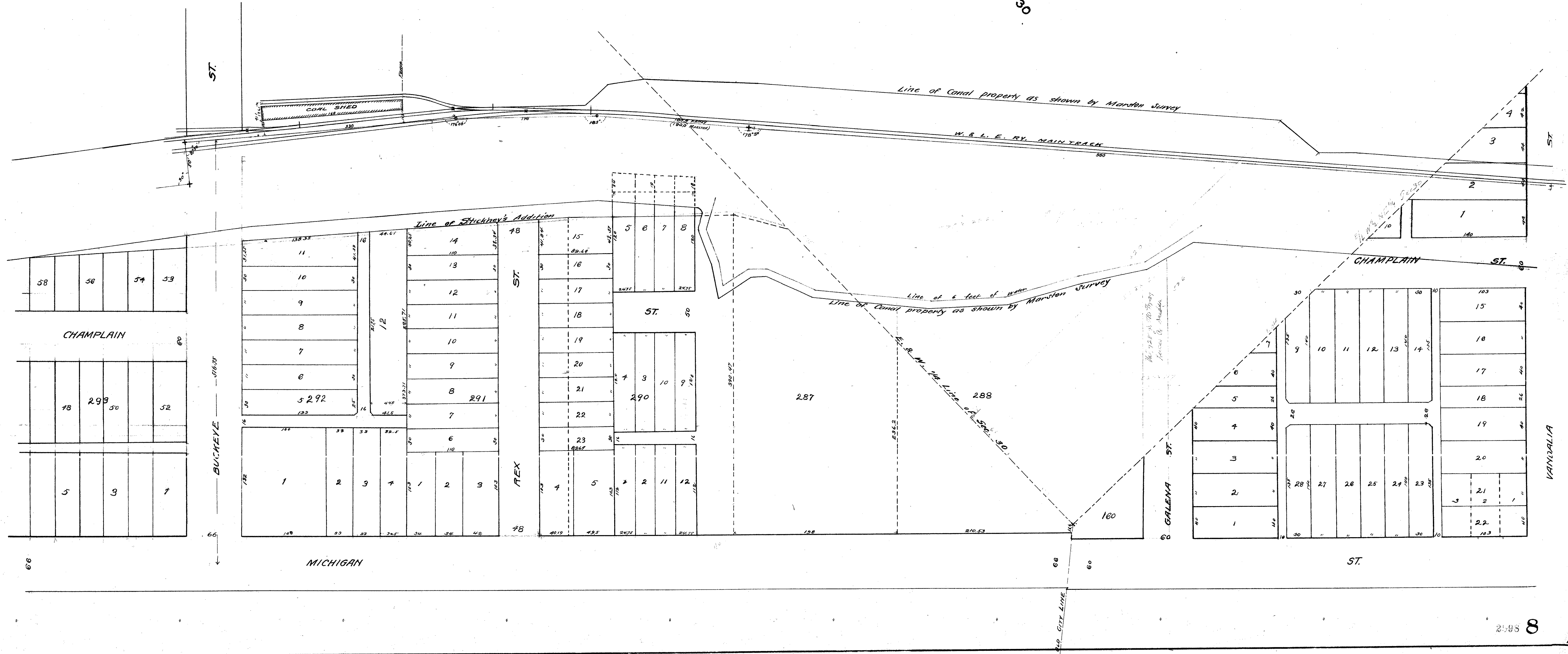
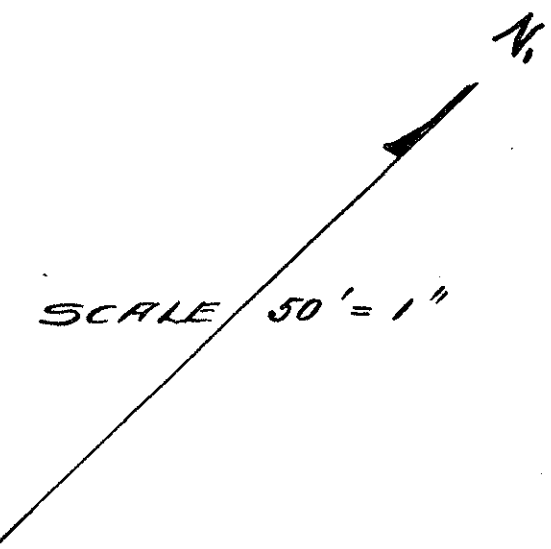
174

175

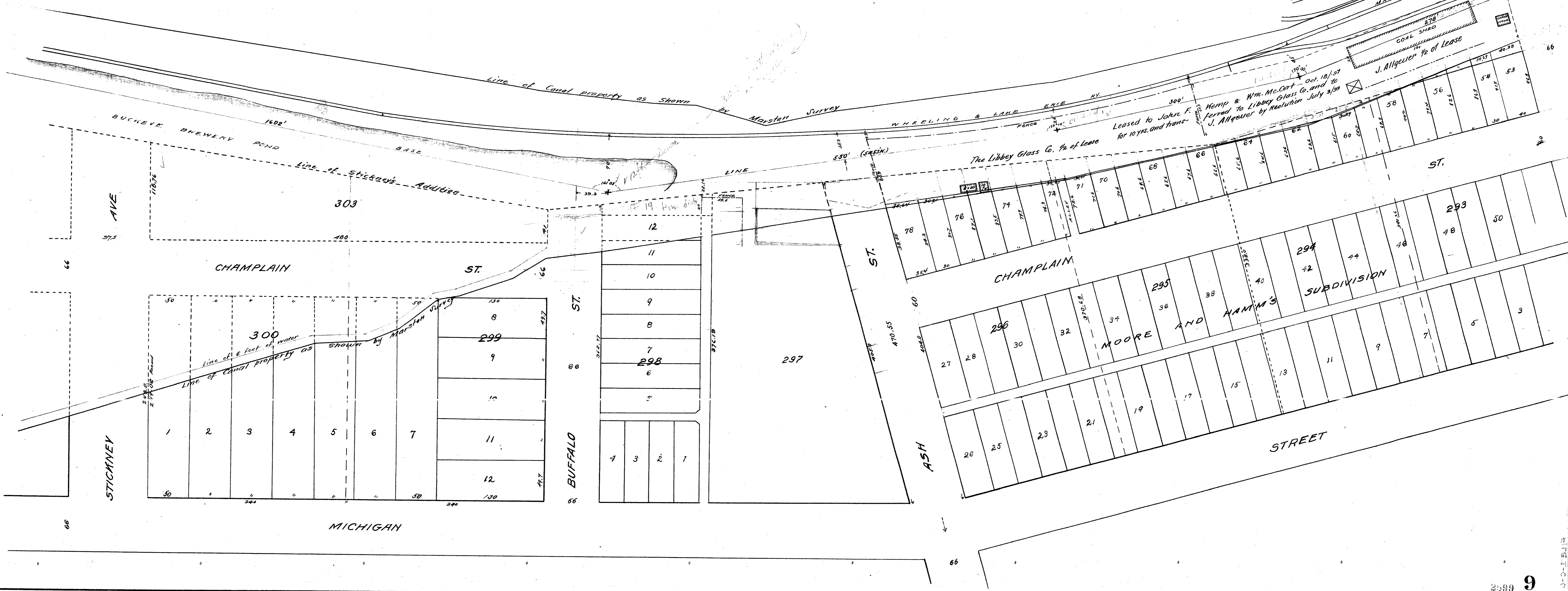
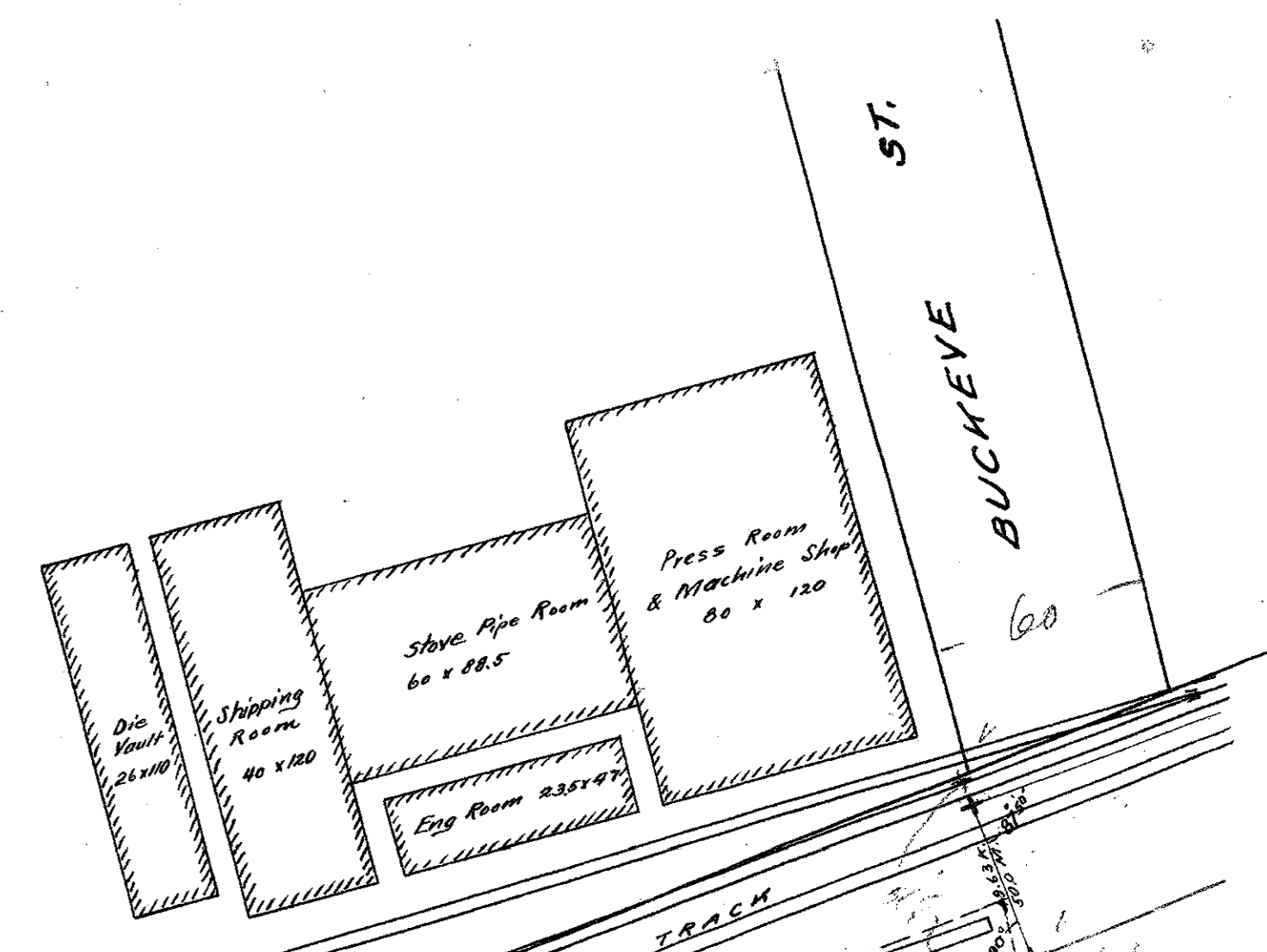
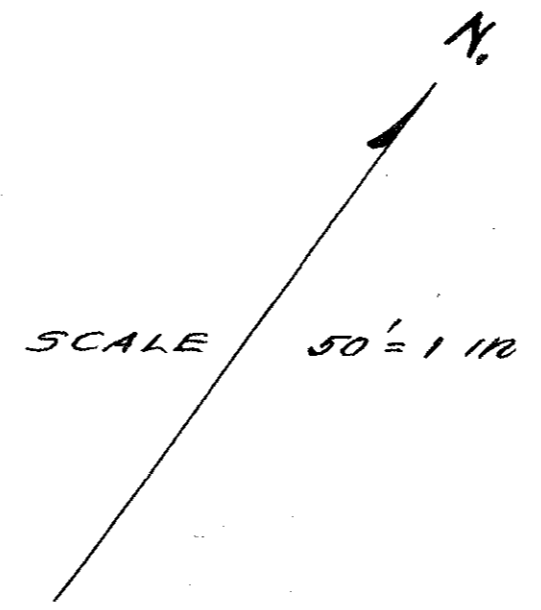
SEC.

30

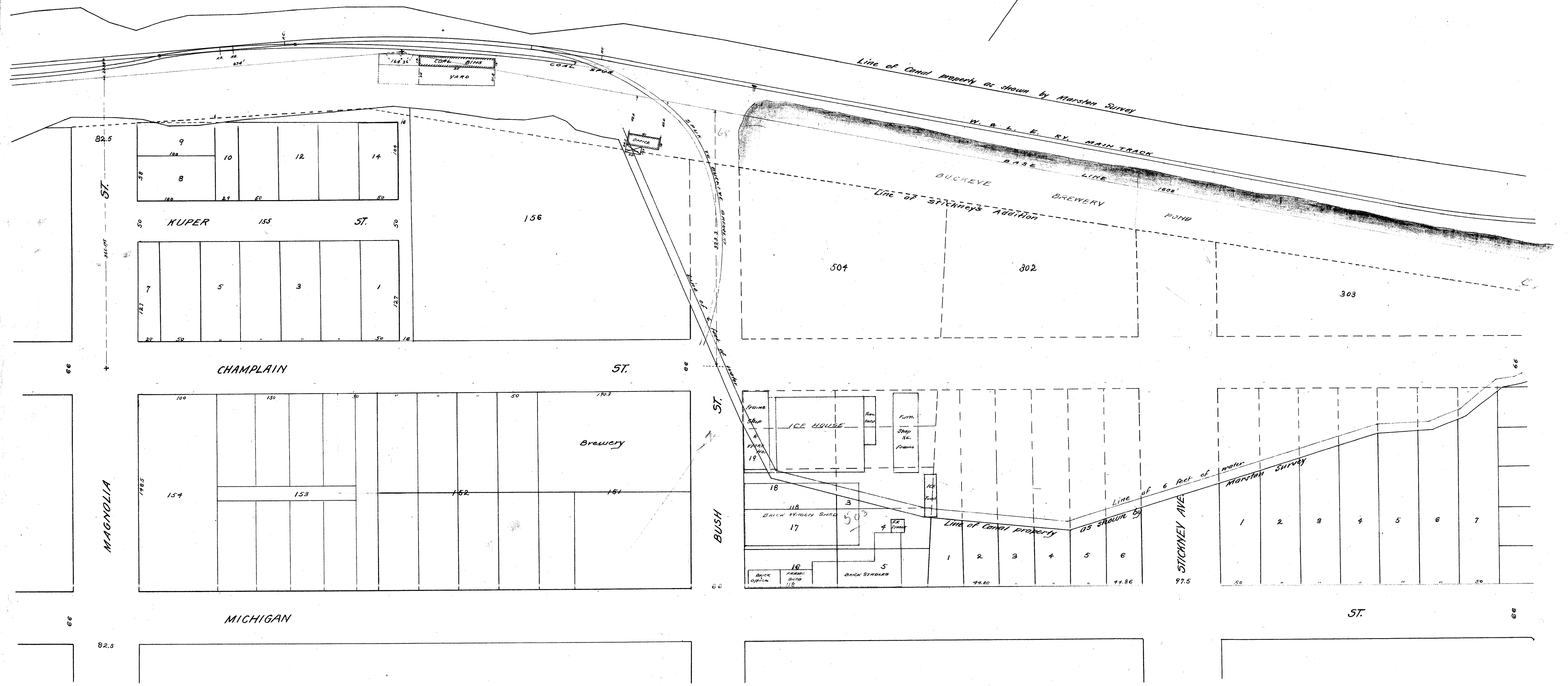
SCALE 30' = 1"

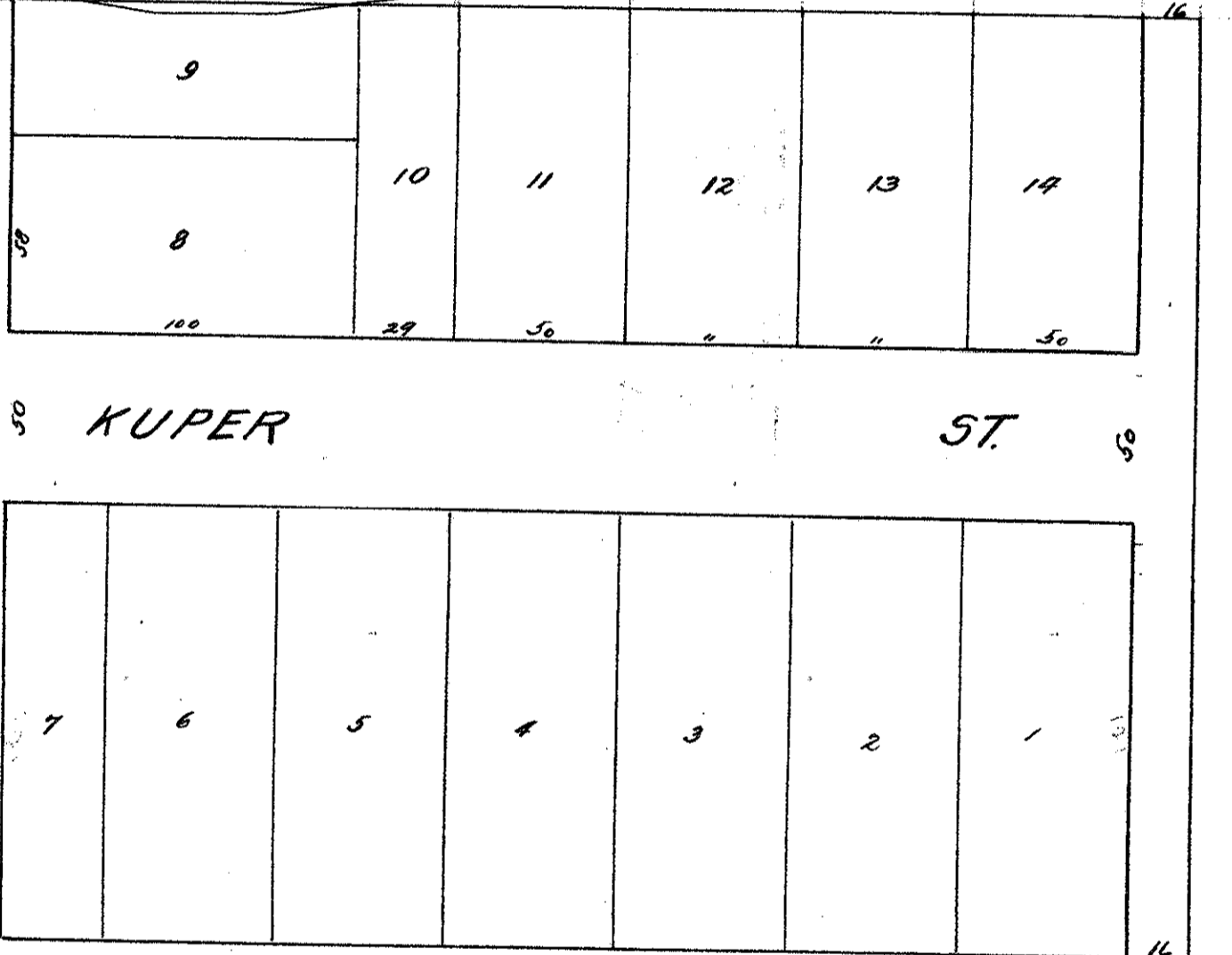
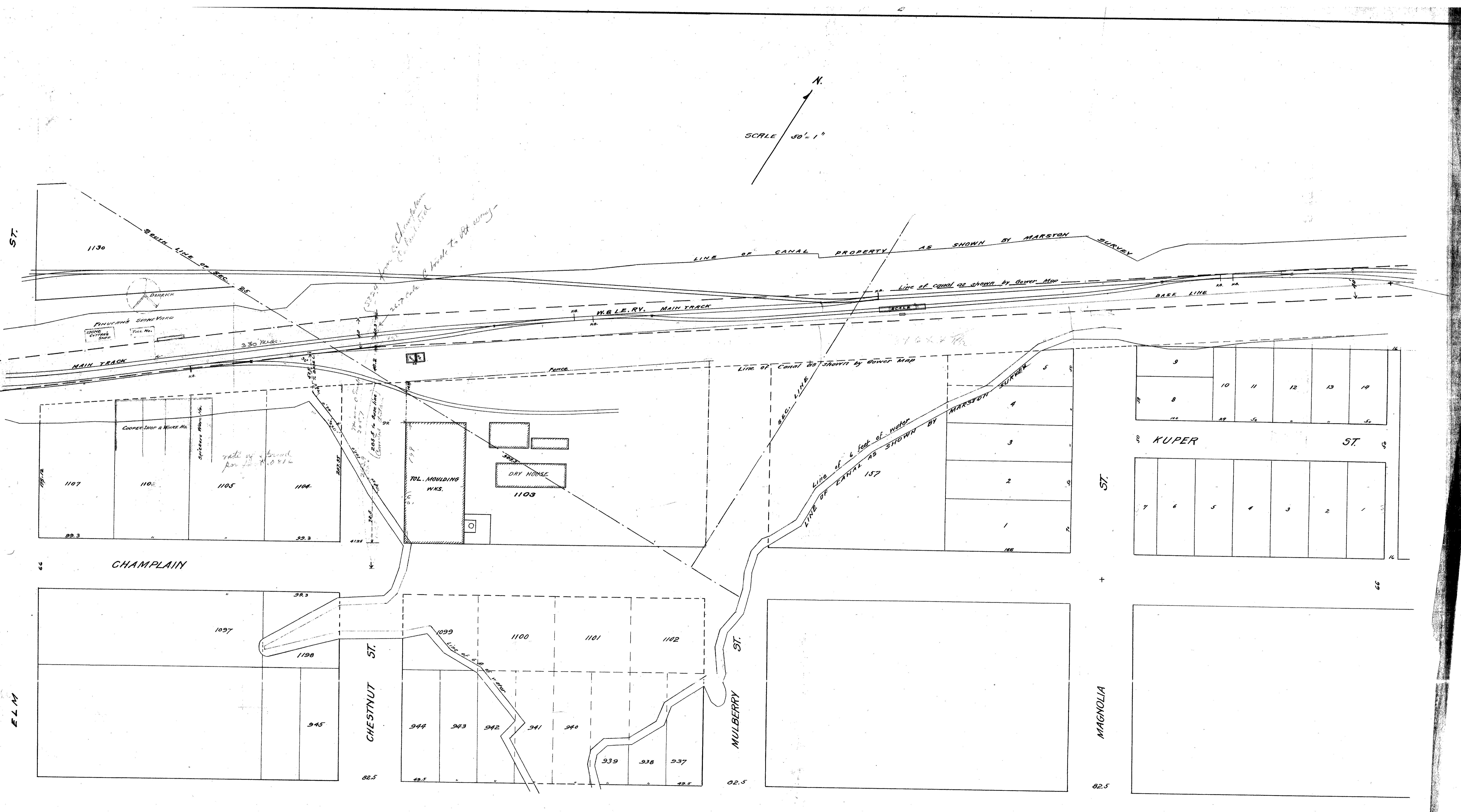
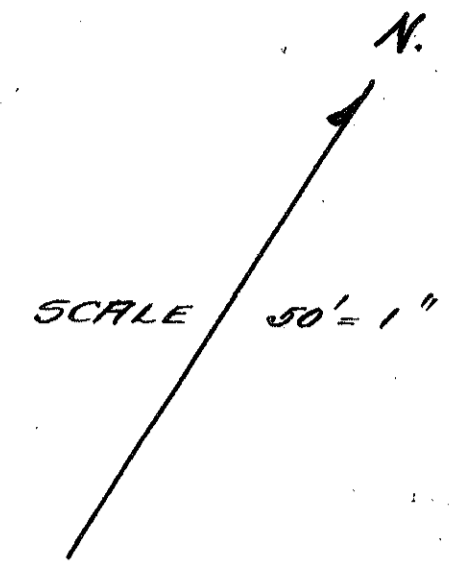


SCALE 50' = 1" IN



N.
SCALE 50' = 1"





SCALE 50' = 1"

N

SENECA

ST.

Ann Home Ry

1126

1127

1128

1129

ST.

VACATED FROM CHERRY TO LAGRANGE STS. by C.P. Canal July 21st 1896

WOODRUFF

AVE.

Line of Canal property as shown by Marston Survey

Line of Canal as shown by Gower Map

MAIN TRACK

W. & L. E. RY.

W. & L. E. FREIGHT HOUSE

STORAGE

TURN TABLE

1111

1110

1109

1108

CHAMPLAIN

Line of Canal as shown by Gower Map

Line of Canal property as shown by Marston Survey

CHERRY

WALNUT

LOCUST

LAGRANGE

ELM

