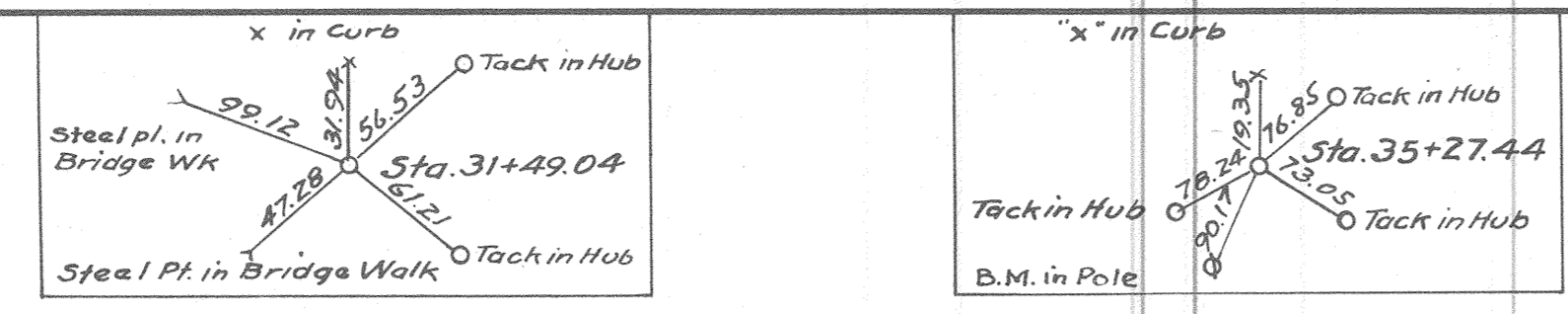
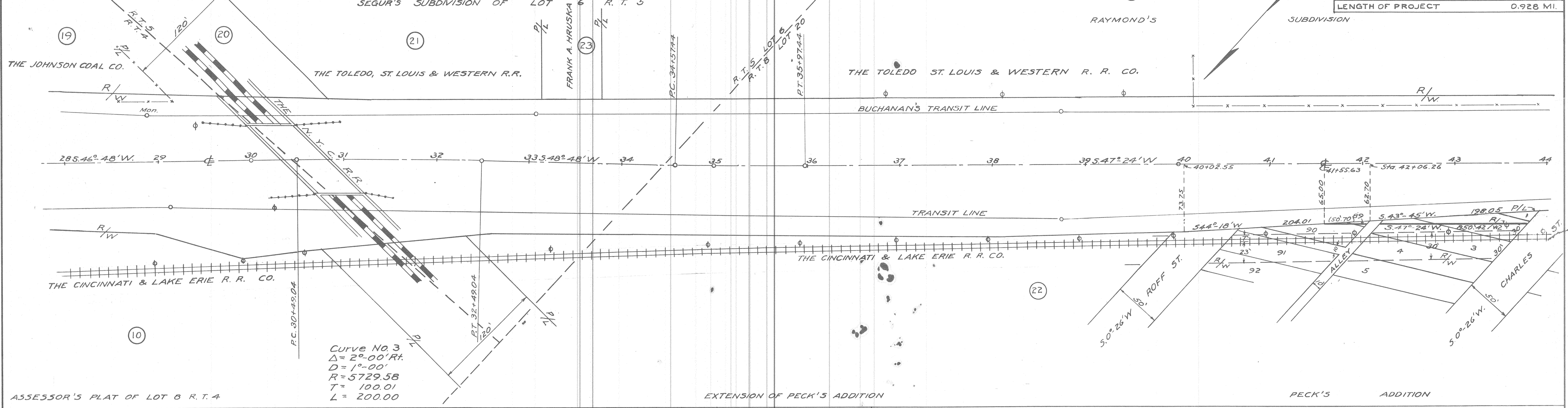


ASSESSOR'S  
PLAT  
LOT 8



Curve No. 4  
 $\Delta = 1^\circ - 24' Lt.$   
 $D = 1^\circ - 00'$   
 $R = 5729.58$   
 $T = 70.00$   
 $L = 140.00$

LUCAS COUNTY 2  
 S.H. 697 SEC. TOLEDO PT. 2  
 R/W PLANS  
 DATE: APRIL 12, 1937. DRAWN BY A.P.  
 REVISED  
 LENGTH OF PROJECT 0.928 MI.

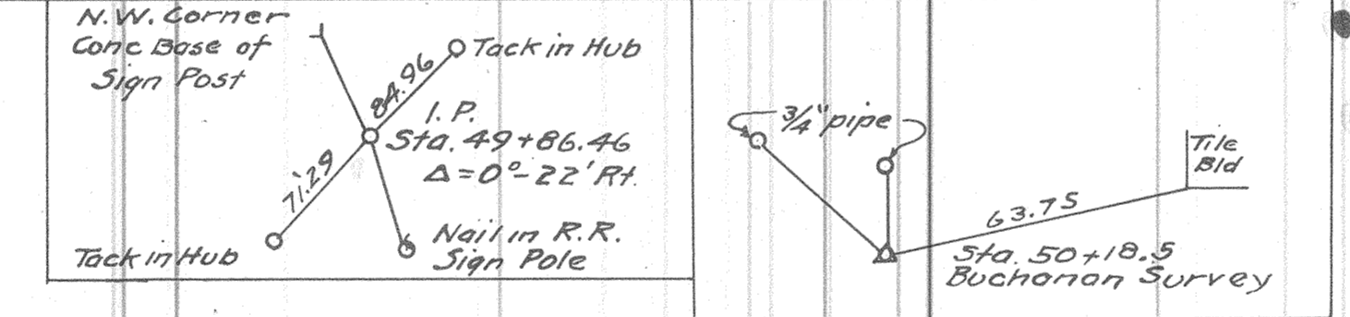


Curve No. 3  
 $\Delta = 2^\circ - 00' Rt.$   
 $D = 1^\circ - 00'$   
 $R = 5729.58$   
 $T = 100.01$   
 $L = 200.00$

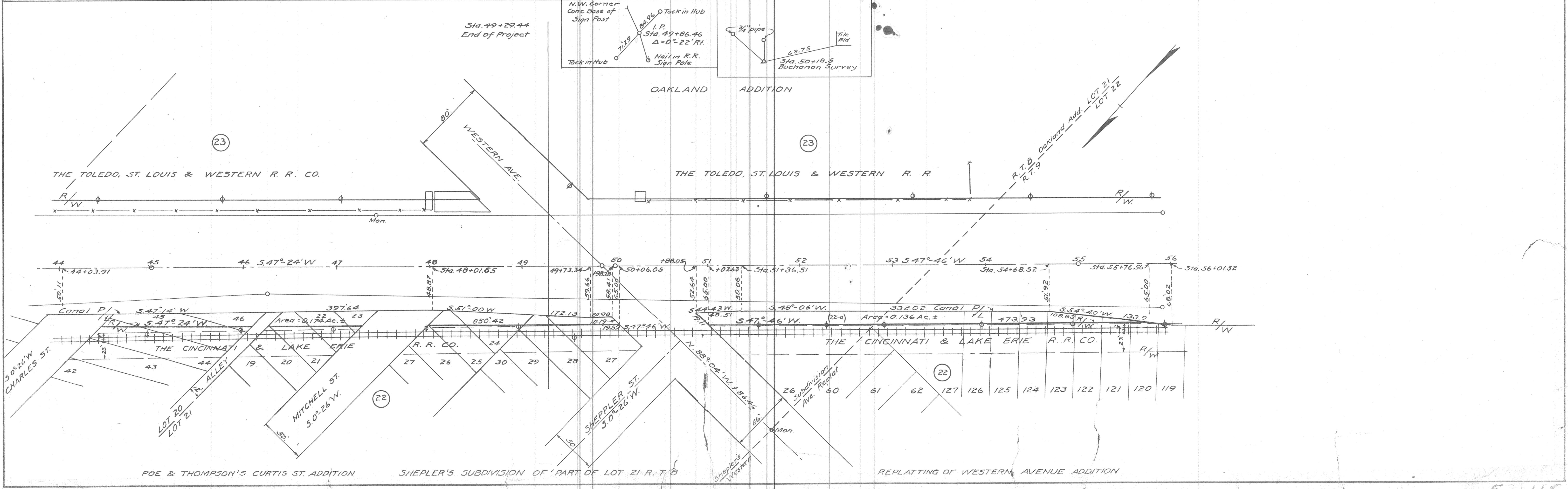
ASSESSOR'S PLAT OF LOT 8 R.T. 4

EXTENSION OF PECK'S ADDITION

PECK'S ADDITION



OAKLAND ADDITION



56-110