

O.D.O.T. DISTRICT 2 SURVEY OFFICE (USE ONLY)

PERSONNEL _____

REFERENCE NO. 3

SHEET _____ OF _____

NOTES RHODES

DATE 7/7/21

ROUTE US 6

H.C. AUBLE

WEATHER FAIR

COUNTY HENRY

R.C. NIESE

TEMP. 77°

TOWNSHIP RIDGEVILLE

DWG BY BARRIERE

PID 101274

SECTION 32

T 6 N R 5 E

TYPE MONUMENT MONBOX W/ 1" IPIN

ON SURFACE - BELOW ON

OFFSET \odot PAVEMENT ON LT : RT

 TO EDGE PAVEMENT

STATION: 46+26

HORZ. DATUM: NAD83 2011

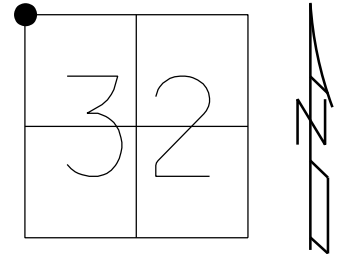
GEOID: 18

GRID: NORTHING: 652086.686

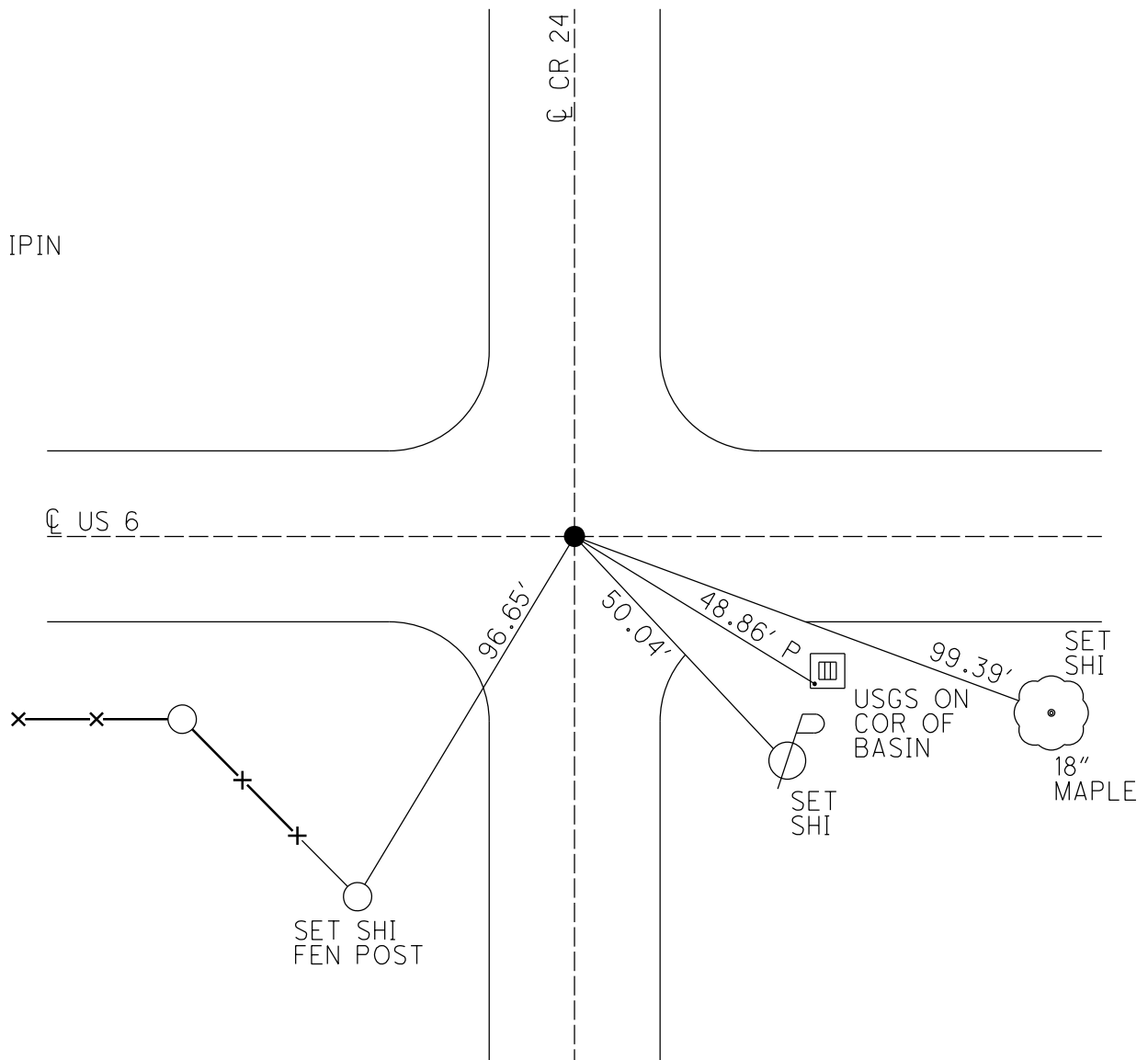
EASTING: 1468190.681

LDP: NORTHING: _____

EASTING: _____



RECORD: P.I.
 STA 46+19.55
 FD SM R.R. SPIKE
 4/14/97, BWC
 SET P.K./WASHER
 6/26/97
 FD MAG SPIKE
 REF3
 7/7/21, DSA
 FD MONBOX W/ 1" IPIN
 NEWREF3
 12/12/22, TDN



O.D.O.T. DISTRICT 2 SURVEY OFFICE (USE ONLY)

PERSONNEL _____

REFERENCE NO. 3

SHEET 4 OF 7

NOTES CORDES

DATE 4/14/97

ROUTE US 6

H.C. LOEHRKE

WEATHER SUN

COUNTY HENRY

R.C. MOSER

TEMP. _____

TOWNSHIP RIDGEVILLE

HUSS

SECTION 32

DWG BY NIESE PID _____

T 6 N R 5 E

TYPE MONUMENT SM.R.R.SPIKE

ON SURFACE - ~~BELOW~~ ON

OFFSET ϕ PAVEMENT ON LT : RT

13' TO RT EDGE PAVEMENT

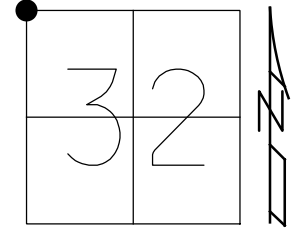
STATION: 46+26

HORZ.DATUM: _____

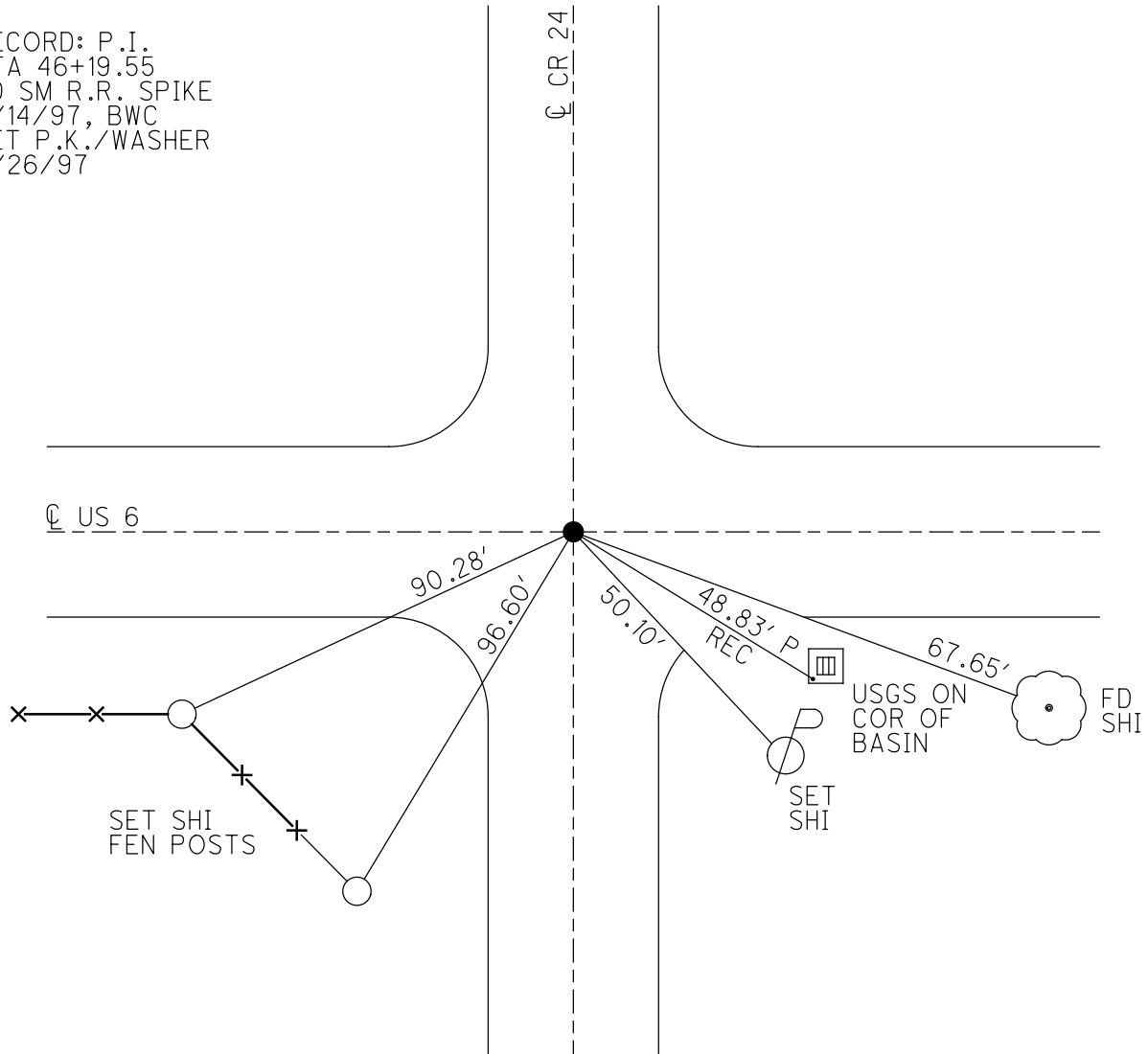
GEOID: _____

GRID: NORTHING: _____

EASTING: _____



RECORD: P.I.
 STA 46+19.55
 FD SM R.R. SPIKE
 4/14/97, BWC
 SET P.K./WASHER
 6/26/97



O.D.O.T. DISTRICT 2 SURVEY OFFICE

PERSONNEL

REFERENCE NO. 3

SHEET 3 OF 7

NOTES CORDS

H.C. LOEHRKE

DATE 4-14-97

ROUTE 6

R.C. MOSEK

WEATHER SUN

COUNTY HENRY

R HUSS

TEMP. +4°C

TOWNSHIP RIDGEVILLE

SECTION 29

Set P.K./WASHUR
6-26-97

T & R 5 E

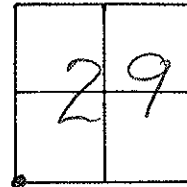
TYPE MONUMENT SM RR SPIKE

ON SURFACE ~~BELOW~~ YES

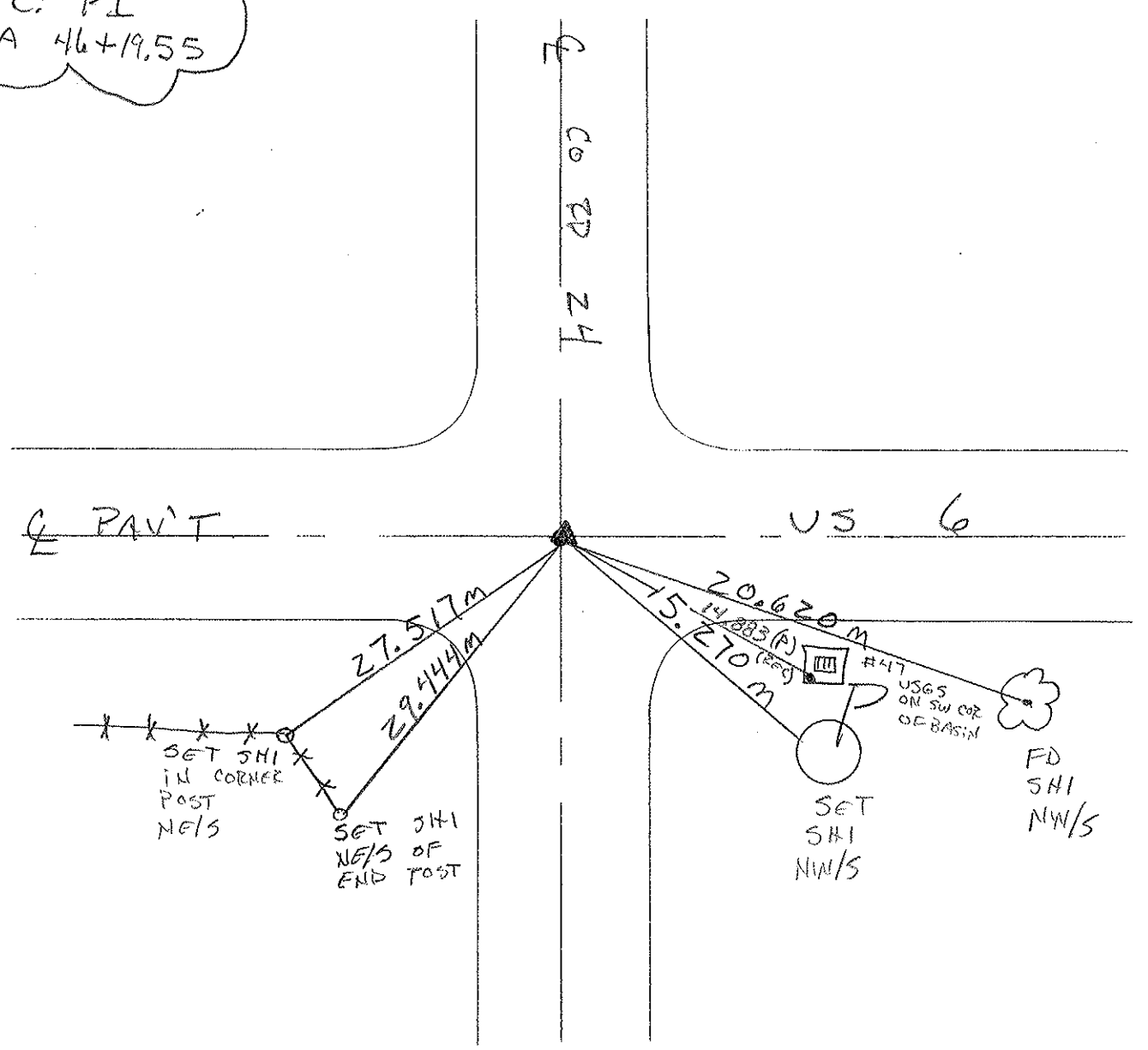
~~PAV'T.~~ RIGHT YES ON E OF N/S RD.

3.96m TO RT EDGE PAVEMENT

S.L.M. 1+410



REC. PI
STA 46+19.55



O.D.O.T. DISTRICT 2 SURVEY OFFICE

PERSONNEL _____

REFERENCE NO. 3

SHEET _____ OF _____

NOTES Hoffman RC

H.C. BACHHISEL

R.C. _____

DATE 5-6-85

WEATHER Cloudy

TEMP. 65°

ROUTE US 6

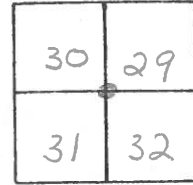
COUNTY HENRY

TOWNSHIP RIDGEVILLE

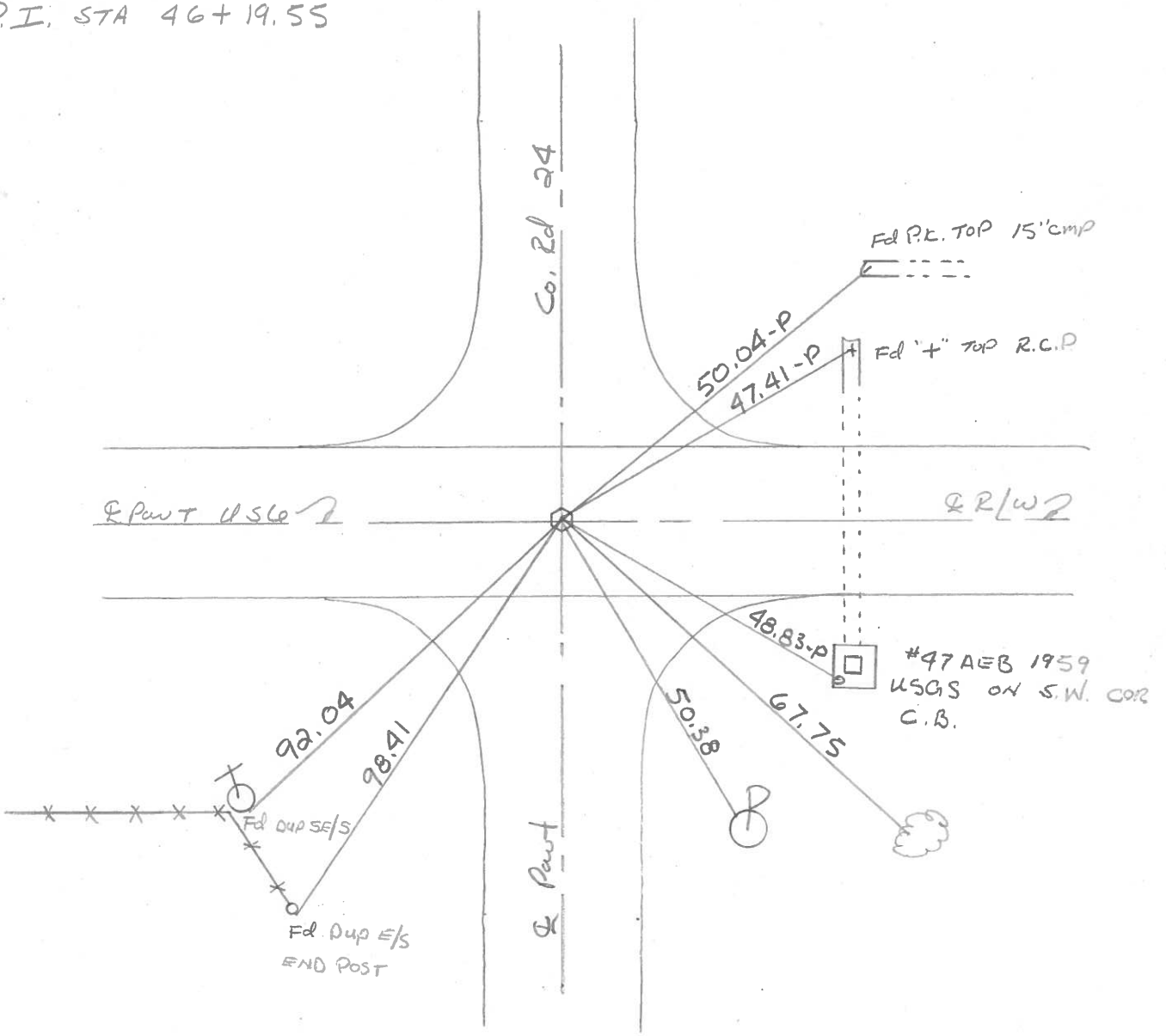
SECTION 29

T 6 N R 5 E

TYPE MONUMENT P.R. SPK Set small RR SPK
~~ON SURFACE~~ - BELOW 1 1/2" 6-13-85 SWH
 LEFT-Q PAV'T. - RIGHT on Q
13.0' TO RT. EDGE PAVEMENT
 S.L.M. 46+20



P.I. STA 46+19.55



PERSONNEL TITLE PERSONNEL TITLE

COUNTY Henry

DATE 12-13-60

Hoover

S. R. 6

WEATHER Cloudy

Ruffer

Delventhal

SEC.

TEMP. 15°

Young
Mohler

DESCRIPTION

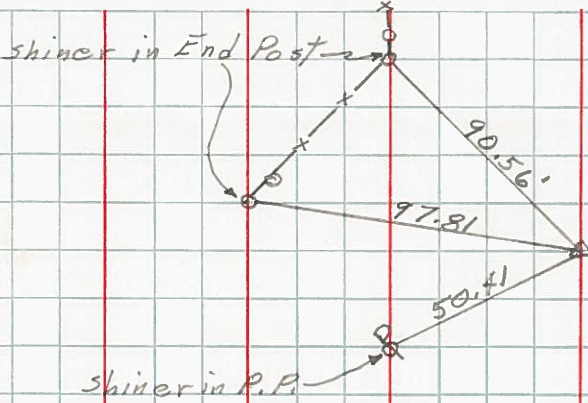
LEFT

CENTER LINE

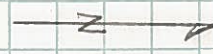
RIGHT

JOB NO.

③

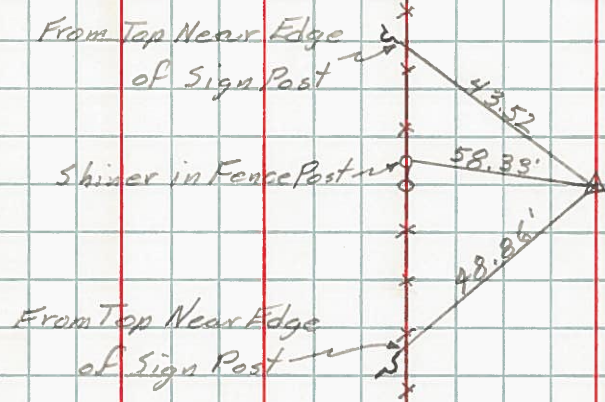


Sta. 46+19.55
Found R.R. Spk.
Int. Twp. Rd. 2+



✓

④



Sta. 72+63.84
Found R.R. Spk.

PERSONNEL TITLE PERSONNEL TITLE

COUNTY Henry DATE Jan 1951

S. R. #384 WEATHER _____

SEC. _____ TEMP. _____

DESCRIPTION _____ JOB NO. _____

LEFT CENTER LINE RIGHT

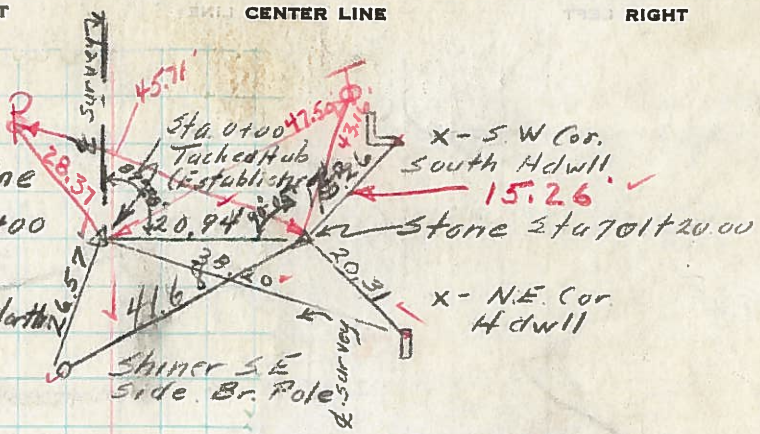
10/9/56

WILLIAMS-HENRY Co Line

Sta 701+20.00 = Sta. 0+00

Found Stone Sta 701+20.00

Established Tacked Hub 20.94 North



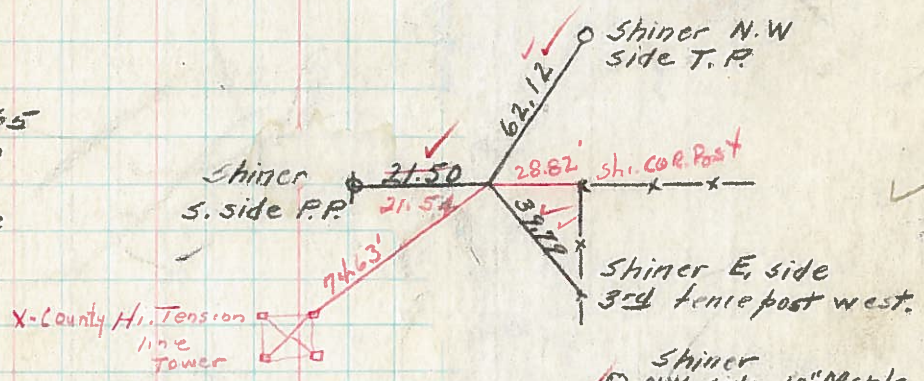
Recorded in
Map book
H.C.

10/9/56

Sta. 19+87.65

L = 0° 00'

Found Stone



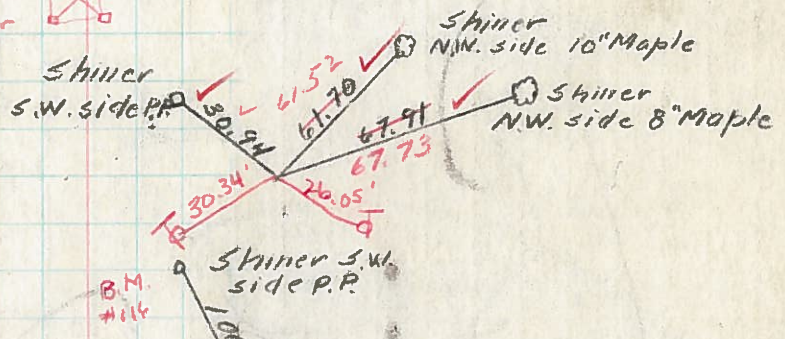
10/9/54

Sta. 46+19.55

L = 0° 10' Lt.

Found I. P. over Stone

S.R. #384 & Twp. Rd #24



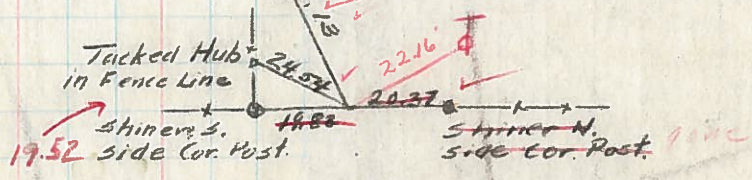
10/9/54

Sta. 72+63.84

L = 0° 08' Lt.

Found Stone

Set R.R. Spk.



10/9/56

Sta. 99+17.62

L = 0° 8' Rt.

Established Tacked Hub

Set R.R. Spk

S.R. #384 & S.R. #66

